

S3079

Simplicity®

easy-to-sew



A



B



C



D



E



Easy

BABIES' BODYSUITS, SHORTS AND PANTS

Suggested Fabrics: A,B: Chambray, Cotton Blends, Gingham, Linen Blends, Poplin, Seersucker, Shirtings. C,D: Stretch Wovens. See Pick-A-Knit® Rule. E: Cotton Blends, Jacquards, Linen Blends, Gingham, Pique, Satin. **Interfacing:** Lightweight Fusible.

Notions: A,B: One pkg. of ½" (1.3cm) single fold bias tape, 8" (20cm) length of snap tape, ¼ yd. (0.8m) of ¾" (1cm) elastic. **Also for A:** Five ¾" (1cm) buttons. **Also for B:** Six ¾" (1cm) buttons. C,D: ¼ yd. (0.5m) of ½" (1.3cm) elastic. E: One 2½" (6cm) bow tie clip fastener.

Sizes	XS	S	M	L	
Age	1-3	6	12	18	mo.

BODY MEASUREMENTS: Select pattern size based on body measurements

Weight	8-12	13-17	18-21	22-25	lbs.
Height	18-24	25-26	27-28	29-30	Ins.

Bodysuit A	45**	¾	¾	¾	1	Yd.
	60**	¾	¾	¾	¾	"

Bodysuit B	45**	¾	¾	¾	1	Yd.
	60**	¾	¾	¾	¾	"

Shorts C	45/60**	¾	¾	¾	¾	Yd.
	60**	¾	¾	¾	¾	"

Pants D	45**	¾	¾	¾	¾	Yd.
	60**	¾	¾	¾	¾	"

Shorts C	45/60**	¾	¾	¾	¾	Yd.
	60**	¾ <td>¾ <td>¾ <td>¾ <td>"</td> </td></td></td>	¾ <td>¾ <td>¾ <td>"</td> </td></td>	¾ <td>¾ <td>"</td> </td>	¾ <td>"</td>	"

Shorts C	24½	26	27½	29	Ins.
					"

Finished side length from waist	Shorts C	9¾	10	10¾	11½	Ins.
	Pants D	14	15½	17	18½	"

Width, each leg	Shorts C	24½	26	27½	29	Ins.
	Pants D	7¾	8¾	9¾	10¾	"

Finished side length from waist	Shorts C	9¾	10	10¾	11½	Ins.
	Pants D	14	15½	17	18½	"

Width, each leg	Shorts C	24½	26	27½	29	Ins.
	Pants D	7¾	8¾	9¾	10¾	"

Finished side length from waist	Shorts C	9¾	10	10¾	11½	Ins.
	Pants D	14	15½	17	18½	"

Width, each leg	Shorts C	24½	26	27½	29	Ins.
	Pants D	7¾	8¾	9¾	10¾	"

Finished side length from waist	Shorts C	9¾	10	10¾	11½	Ins.
	Pants D	14	15½	17	18½	"

Width, each leg	Shorts C	24½	26	27½	29	Ins.
	Pants D	7¾	8¾	9¾	10¾	"

Finished side length from waist	Shorts C	9¾	10	10¾	11½	Ins.
	Pants D	14	15½	17	18½	"

Width, each leg	Shorts C	24½	26	27½	29	Ins.
	Pants D	7¾	8¾	9¾	10¾	"

Finished side length from waist	Shorts C	9¾	10	10¾	11½	Ins.
	Pants D	14	15½	17	18½	"

Width, each leg	Shorts C	24½	26	27½	29	Ins.
	Pants D	7¾	8¾	9¾	10¾	"

Finished side length from waist	Shorts C	9¾	10	10¾	11½	Ins.
	Pants D	14	15½	17	18½	"

Width, each leg	Shorts C	24½	26	27½	29	Ins.
	Pants D	7¾	8¾	9¾	10¾	"

Finished side length from waist	Shorts C	9¾	10	10¾	11½	Ins.
	Pants D	14	15½	17	18½	"

Facile

CORSAGES-CULOTTES, SHORT ET PANTALON POUR BÉBÉS

Tissus Conseillés: A,B: Chambray, Cottonnades, Vichy, Lin mélangés, Popeline, Seersucker, Shirtings. C,D: Tissus tissés extensibles. Reportez-vous à la règle Pick-A-Knit®. E: Cottonnades, Jacquards, Lin mélangés, Vichy, Piqué, Satin. **Entoilage:** Thermocollant léger.

Mercerie: A,B: 1 paquet de ruban de biais simple de 1.3cm, 20cm de boutons pression sur ruban de 2cm, 0.8m d'élastique de 1cm. **Aussi pour A:** 5 boutons de 1cm. **Aussi pour B:** 6 boutons de 1cm. C,D: 0.5m d'élastique de 1.3cm. E: 1 pince pour nœud papillon de 6cm.

Tailles	TP/XS	P/S	M	G/L	
Âge	1-3	6	12	18	mois

MESURES DU CORPS: Choisissez la taille du patron basée sur les mesures du corps

Poids	4-6	6-8	8-10	10-11	kg
Hauteur	46-61	64-66	69-71	74-76	cm

Corsage-Culotte A	115cm*	0.7	0.8	0.8	0.8	m
	150cm*	0.6	0.6	0.7	0.7	"

Corsage-Culotte B	115cm*	0.8	0.8	0.8	0.9	m
	150cm*	0.6	0.7	0.7	0.7	"

Short C	115/150cm*	0.5	0.6	0.6	0.6	m
	150cm*	0.6	0.6	0.7	0.7	"

Pantalon D	115cm*	0.6	0.7	0.7	0.7	m
	150cm*	0.6	0.6	0.7	0.7	"

Nœud papillon E	115/150cm*	- 0.2m				

MESURES DES VÊTEMENTS FINI (Motif et aisance de port compris)

Largeur, chaque jambe	Short C	62	66	70	74	cm
	Pantalon D <td>20</td> <td>22</td> <td>25</td> <td>27</td> <td>"</td>	20	22	25	27	"

Longueur finie – côté, taille à l'ourlet	Short C	23	25	27	29	cm
	Pantalon D <td>36</td> <td>39</td> <td>43</td> <td>47</td> <td>"</td>	36	39	43	47	"

Largeur, chaque jambe	Short C	62	66	70	74	cm
	Pantalon D <td>20</td> <td>22</td> <td>25</td> <td>27</td> <td>"</td>	20	22	25	27	"

Longueur finie – côté, taille à l'ourlet	Short C	23	25	27	29	cm
	Pantalon D <td>36</td> <td>39</td> <td>43</td> <td>47</td> <td>"</td>	36	39	43	47	"

Largeur, chaque jambe	Short C	62	66	70	74	cm
	Pantalon D <td>20</td> <td>22</td> <td>25</td> <td>27</td> <td>"</td>	20	22	25	27	"

Longueur finie – côté, taille à l'ourlet	Short C	23	25	27	29	cm
	Pantalon D <td>36</td> <td>39</td> <td>43</td> <td>47</td> <td>"</td>	36	39	43	47	"

Largeur, chaque jambe	Short C	62	66	70	74	cm
	Pantalon D <td>20</td> <td>22</td> <td>25</td> <td>27</td> <td>"</td>	20	22	25	27	"

Longueur finie – côté, taille à l'ourlet	Short C	23	25	27	29	cm
	Pantalon D <td>36</td> <td>39</td> <td>43</td> <td>47</td> <td>"</td>	36	39	43	47	"

Largeur, chaque jambe	Short C	62	66	70	74	cm
	Pantalon D <td>20</td> <td>22</td> <td>25</td> <td>27</td> <td>"</td>	20	22	25	27	"

Longueur finie – côté, taille à l'ourlet	Short C	23	25	27	29	cm
	Pantalon D <td>36</td> <td>39</td> <td>43</td> <td>47</td> <td>"</td>	36	39	43	47	"

Largeur, chaque jambe	Short C	62	66	70	74	cm
	Pantalon D <td>20</td> <td>22</td> <td>25</td> <td>27</td> <td>"</td>	20	22	25	27	"

Longueur finie – côté, taille à l'ourlet	Short C	23	25	27	29	cm
	Pantalon D <td>36</td> <td>39</td> <td>43</td> <td>47</td> <td>"</td>	36	39	43	47	"

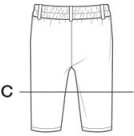
Largeur, chaque jambe	Short C	62	66	70	74	cm
	Pantalon D <td>20</td> <td>22</td> <td>25</td> <td>27</td> <td>"</td>	20	22	25	27	"

Longueur finie – côté, taille à l'ourlet	Short C	23	25	27	29	cm
	Pantalon D <td>36</td> <td>39</td> <td>43</td> <td>47</td> <td>"</td>	36	39	43	47	"

Largeur, chaque jambe	Short C	62	66	70	74	cm
	Pantalon D <td>20</td> <td>22</td> <td>25</td> <td>27</td> <td>"</td>	20	22	25	27	"



A B



C

D



E

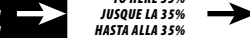
Use the 1 inch (2.54cm) box to ensure you are using rule at 100%

Utilisez la boîte de 2,54 cm pour vous assurer d'utiliser la règle à 100%.

Utilizar un cuadrado de 2.54 cm para asegurarse de estar usando la regla al 100%.

PICK-A-KNIT® RULE

FOR THIS PATTERN - 4" (10 cm) OF KNIT FABRIC MUST STRETCH CROSSWISE FROM HERE
POUR CE PATRON - LE JERSEY DOIT S'ÉTIRER DANS LA LARGEUR DE 4" (10 cm) DEPUIS ICI
PARA ESTE PATRON - LAS MALLAS DEBEN ESTIRARSE A LO ANCHO POR 4" (10 cm) DESDE AQUI



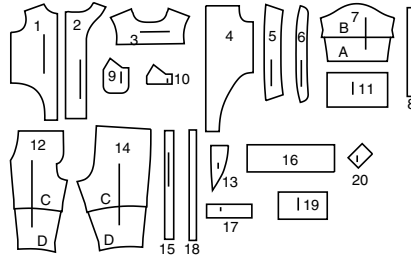
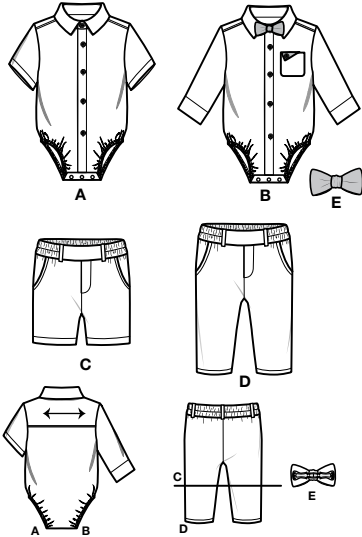
TO HERE 35%
JUSQUE LA 35%
HASTA ALLA 35%



When using the Pick-A-Knit® rule to measure your fabrics stretch capacity, rule must be viewed or printed at 100%.
Quand vous utilisez la règle Pick-A-Knit® pour mesurer la capacité d'élasticité des tissus, la règle doit être visible ou imprimée à 100%.
Al utilizar la regla Pick-A-Knit® para medir la capacidad de elasticidad de las telas, la regla debe estar visible o impresa al 100%.

Simplicity®

Thank you for purchasing this Simplicity pattern. We made every effort to provide you with a high quality product.



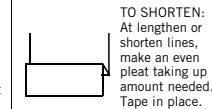
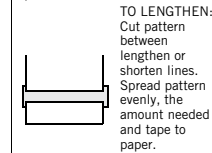
- 1 Front-A,B
- 2 Front Band and Self Facing-A,B
- 3 Yoke Back-A,B
- 4 Back-A,B
- 5 Collar-A,B
- 6 Collar Band-A,B
- 7 Sleeve-A,B
- 8 Elastic Guide for Leg-A,B
- 9 Pocket-B
- 10 Pocket Facing-B
- 11 Sleeve Band-B
- 12 Front-C,D
- 13 Yoke Front-C,D
- 14 Back-C,D
- 15 Carrier-C,D
- 16 Waistband-C,D
- 17 Front Interfacing-C,D
- 18 Elastic Guide for Waist-C,D
- 19 Bow-E
- 20 Knot-E

General Directions

The Pattern

- SYMBOLS**
- ↔ GRAIN LINE Place on straight grain of fabric parallel to selvage
 - ⇄ PLACE SOLID LINE on fold of fabric.
 - - - - - CENTER FRONT OR BACK of garment.
 - ∇ NOTCHES
 - ○ DOTS
 - CUTTING LINE
 - == LENGTHEN OR SHORTEN LINES
- SEAM ALLOWANCE: 5/8" (1.5cm) unless otherwise stated is included but not printed on MULTI-SIZE PATTERNS. Mark your size with colored felt tip pen. See chart on tissue for how to use MULTI-SIZE PATTERNS.

ADJUST IF NEEDED
Make adjustments before placing pattern on fabric.



When lengthen or shorten lines are not given, make adjustments at lower edge of pattern.

Cutting/Marking

BEFORE CUTTING:
PRESS pattern pieces with a warm dry iron. PRE-SHRINK fabric by pre-washing washables or steam-pressing non-washables.

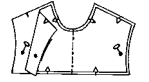
CIRCLE your cutting layout.
PIN pattern to fabric as shown in Cutting Layouts.

- FOR DOUBLE THICKNESS: Fold fabric with RIGHT sides together.
- FOR SINGLE THICKNESS: Place fabric RIGHT side up.
- FOR PILE, SHADED OR ONE WAY DESIGN FABRICS: Use "with nap" layouts

AFTER CUTTING:
Transfer markings to WRONG side of fabric before removing pattern. Use pin and chalk method or dressmaker's tracing paper and wheel.

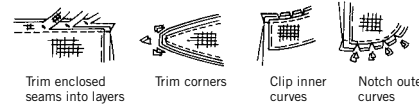
To Quick Mark:

- Snip edge of fabric to mark notches, ends of fold lines and center lines.
- Pin mark dots.



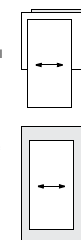
Sewing

- SEW garment following Sewing Directions.
- PIN or machine-baste seams matching notches.
- STITCH 5/8" (1.5 cm) seams unless otherwise stated.
- PRESS seams open unless otherwise indicated clipping when necessary so seams will lie flat.
- TRIM seams to reduce bulk, as shown below.

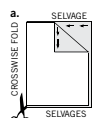


SPECIAL CUTTING NOTES

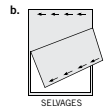
★ If layout shows a piece extending past fold, cut out all pieces except piece that extends.



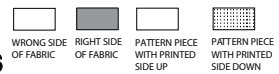
✱ Mark small arrows along both selvages indicating direction of nap or design. Fold fabric crosswise with RIGHT sides together, and cut along fold (a).



Turn one fabric layer around so arrows on both layers go in the same direction. Place RIGHT sides together (b).



Cutting Layouts

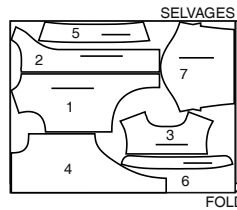


POSITION OF PATTERN PIECES MAY VARY SLIGHTLY ACCORDING TO YOUR PATTERN SIZE

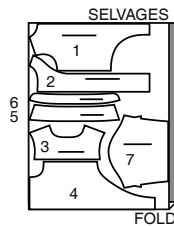
BODY SUIT A

USE PIECES 1 2 3 4 5 6 7

45" (115CM) WITH NAP ALL SIZES



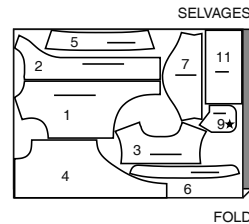
60" (150CM) WITH NAP ALL SIZES



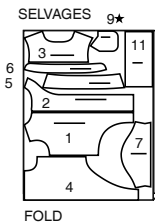
BODY SUIT B

USE PIECES 1 2 3 4 5 6 7 9 11

45" (115CM) WITH NAP ALL SIZES



60" (150CM) WITH NAP ALL SIZES



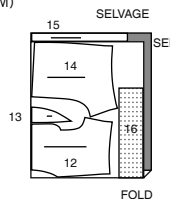
POCKET FACING B

CUT ONE OF PIECE 10 FROM REMNANT

SHORTS C

USE PIECES 12 13 14 15 16

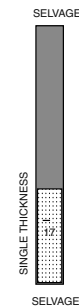
45"/60" (115CM/150CM) WITH NAP ALL SIZES



INTERFACING C,D

USE PIECE 17

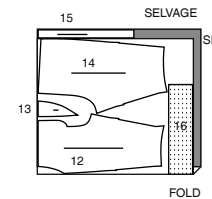
20" (51CM) ALL SIZES



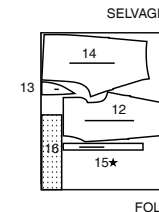
PANTS D

USE PIECES 12 13 14 15 16

45" (115CM) WITH NAP ALL SIZES



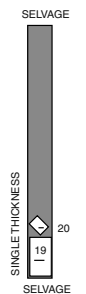
60" (150CM) WITH NAP ALL SIZES



BOW TIE E

USE PIECES 19 20

45"/60" (115CM/150CM) WITH NAP ALL SIZES



SEWING TUTORIALS



Build your skills viewing short, easy-to-follow videos at simplicity.com/sewingtutorials

Sewing Directions

FABRIC KEY RIGHT SIDE WRONG SIDE INTERFACING LINING LINING

Read **General Directions** on page 1 before you begin.

Sewing methods in **BOLD TYPE** have Sewing Tutorial Video available. Scan QR CODE to watch videos:

EASE – See **Gathering: “sewing two row gathers”** video.

EDGESTITCH – See **Machine Stitches: “how to sew an edgestitch”** video.

SLIPSTITCH – See **Hand Stitching: “how to slip stitch”** video.

STAYSTITCH – See **Machine Stitches: “how to do stay stitching”** video.

STITCH IN THE DITCH – See **Machine Stitches: “how to stitch in the ditch”** video.

TOPSTITCH – See **Machine Stitches: “how to topstitch”** video.

TRIM SEAM – See **Seams: “how to trim, clip and layer seams”** video.

UNDERSTITCH – See **Machine Stitches: “how to understitch”** video.

PATTERN PIECES WILL BE IDENTIFIED BY NUMBERS THE FIRST TIME THEY ARE USED.

STITCH 5/8" (1.5CM) SEAMS WITH RIGHT SIDES TOGETHER UNLESS OTHERWISE STATED.

BODY SUIT A, B

1. STAYSTITCH neck edge of FRONT (1) and FRONT BAND AND SELF FACING (2) a generous 1/4" (6mm) from raw edge in the direction of the arrows. This stitching stays in permanently to prevent stretching on curved edges. (Shown only in the first illustration.)

2. With **RIGHT** sides together and raw edges even, pin front to front band and facing, matching notches. Stitch. Press seam toward front band.

3. Fold front band and self facing to **INSIDE** along fold line for facing. Press. Baste raw edges.

4. On **OUTSIDE**, **EDGESTITCH** front band close to seam. Make buttonholes in **LEFT** front at markings.

POCKET B

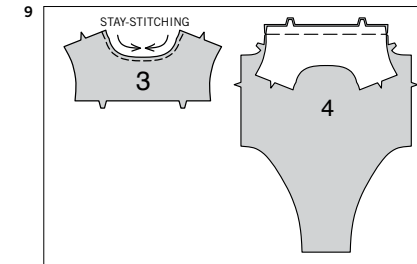
5. To finish long straight edge of **POCKET FACING** (10), stitch 1/8" (3mm) from raw edge, as shown. With **RIGHT** sides together and raw edges even, pin pocket facing to **POCKET** (9), matching large dots. Stitch along 3/8" (1cm) seamline on raw edges. To ease curved edge of pocket, stitch 1/4" (6mm) **INSIDE** the seamline, using a long machine stitch. **TRIM SEAM** allowance of facing and pocket in the facing area.

6. Turn pocket facing to **INSIDE**, press, pressing under raw edges along stitching. Pull up ease stitches to shape the curve. To eliminate bulk, notch out the fullness in the seam allowance as far as ease stitches.

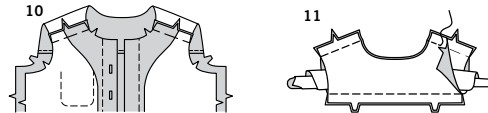
7. On **OUTSIDE**, pin pocket to **LEFT** front, matching large dots. Stitch close to side and lower edges between the dots. Press. Fold upper extension to **OUTSIDE** between the large dots. Press.

CONTINUE AS FOLLOWS FOR BOTH VIEWS

8. On **OUTSIDE**, lap **LEFT** front over **RIGHT** front. **EDGESTITCH** **LEFT** front from lower edge to small dot on **RIGHT** front through all thicknesses, back-stitching at dot to reinforce the seam. Baste raw edges together.

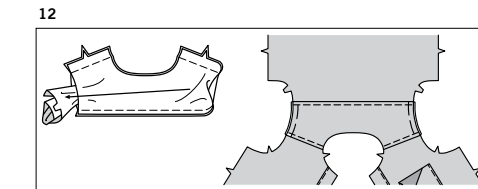


9. STAYSTITCH neck edge of **YOKE BACK** (3) sections a generous 1/4" (6mm) from raw edge in the direction of the arrows. With **RIGHT** sides together and raw edges even, pin lower edge of yoke to upper edge of **BACK** (4), matching notches. Baste.



10. With right sides together and raw edges even, pin front to yoke at forward shoulder edges. Baste.

11. Roll front and back sections up clearing seamlines of yoke, as shown. With **RIGHT** sides together and raw edges even, pin yoke back facing to yoke, matching centers and notches. Stitch forward shoulder edges and lower edges, sandwiching the rolled-up shirt sections. **TRIM SEAM.**



12. Pull shirt sections through yoke at armhole edges, turning shirt; press. Baste raw edges together. On **OUTSIDE**, **TOPSTITCH** yoke 1/4" (6mm) from shoulder and lower seam.

13. Clip garment neck edge to staystitching.

With **RIGHT** sides together, pin single notched edge of **COLLAR BAND** (6) to neck edge, matching centers back and inner small dots. (Collar band extends 3/8" (1cm) beyond front opening edges.) Stitch neck edge in a 3/8" (1cm) seam. **TRIM SEAM.**

Press band out; press seam toward band.

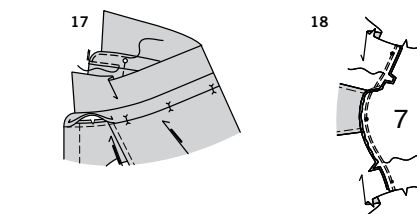
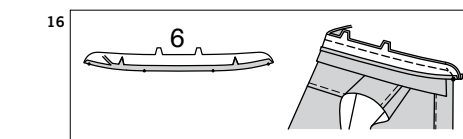
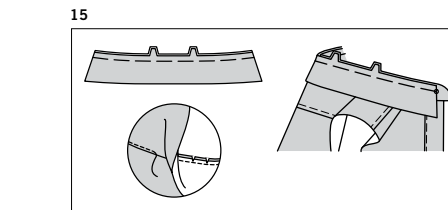
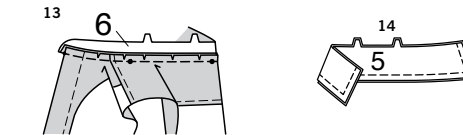
14. With **RIGHT** sides together and raw edges even, stitch facing to **COLLAR** (5) in a 3/8" (1cm) seam, leaving notched edges open. **TRIM SEAM.**

15. UNDERSTITCH collar facing as far as possible. Turn collar; press. Machine-baste raw edges together. With **RIGHT** sides together and raw edges even, pin collar (facing side) to collar band, matching centers back and double notches and placing ends at large dots. Machine-baste.

16. Press under 3/8" (1cm) on single notched edge of collar band facing; trim to 1/4" (6mm). With **RIGHT** sides together, pin collar band facing to collar band (over collar), matching centers. Stitch front and double notched edge. **TRIM SEAM.**

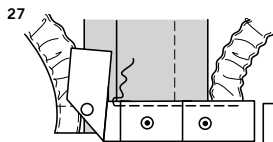
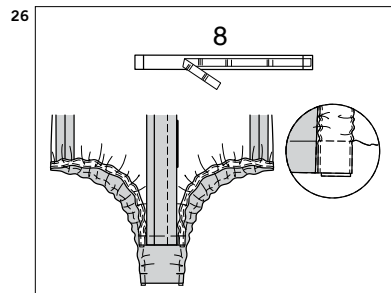
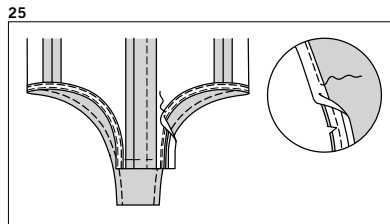
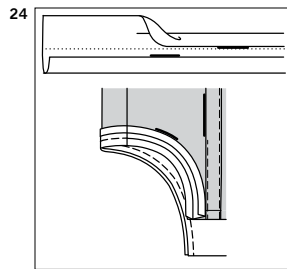
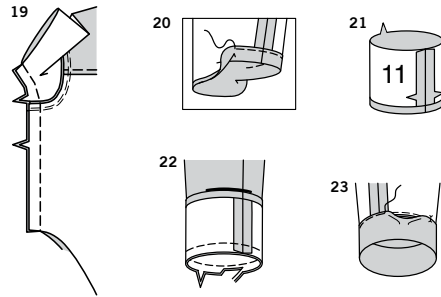
17. Turn band facing to **INSIDE**; press. Pin pressed edge of facing over seam, placing pins on **OUTSIDE**. On **OUTSIDE**, stitch close to all edges of collar band, catching in pressed edge of facing on **INSIDE**.

18. To **EASE** upper edge of **SLEEVE** (7) between the notches, stitch along 3/8" (1cm) seamline and 1/4" (6mm) from raw edge. With **RIGHT** sides together and raw edges even, pin sleeve to garment, matching small dots and notches, pulling up ease stitches to fit. Stitch in a 3/8" (1cm) seam. Press seam toward sleeve, pressing sleeve out.



S3079

3 of 4



19. Stitch front to back at entire underarm seam, matching armhole seams.

20. FOR VIEW A – Press up 1" (2.5cm) on lower edge of sleeve. Turn under raw edge 1/4" (6mm); press. Stitch close to inner pressed edge.

21. FOR VIEW B – Stitch notched ends of SLEEVE BAND (11) together. Press under 1/2" (1.3cm) on notched edge; trim to 1/4" (6mm).

22. With RIGHT sides together, pin sleeve band to lower edge of sleeve, matching seams and notches. Stitch seam.
TRIM SEAM. Press seam toward band, pressing sleeve out.

23. On INSIDE, pin pressed edge of band over seam, placing pins on OUTSIDE. On OUTSIDE, **STITCH IN THE DITCH** of the seam, catching in pressed edge of band on INSIDE.

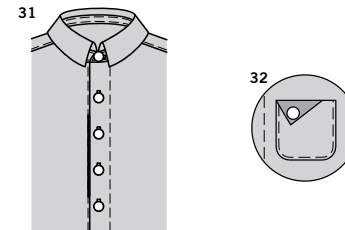
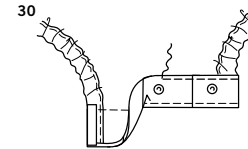
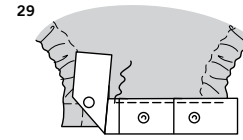
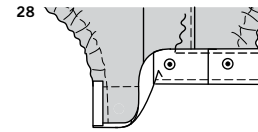
CONTINUE AS FOLLOWS FOR BOTH VIEWS

24. Open out one edge of single fold bias tape. With RIGHT sides together, pin tape to leg hole edge having crease 3/8" (1cm) from raw edge. Stitch in 3/8" (1cm) seam. **TRIM SEAM.**

25. UNDERSTITCH the tape. Turn tape to INSIDE; press. **EDGESTITCH** close to inner edge of tape.

26. Cut a piece of 3/8" (1cm) elastic the length of the ELASTIC GUIDE FOR LEG (8). Thread elastic through end of tape. Stitch across seamlines, catching in end of elastic, securely.

27. Cut a piece of snap tape the length of lower edge of bodysuit, plus 2" (5cm). Separate the tape. On INSIDE, pin socket section of tape to lower edge of front, placing center snap on center, lapping seam allowance, having inner edge of tape along seamline. (Make small pleats in tape on each side of center, if necessary, to aim for at least three snaps between leg hole edges). Trim tape to lap leg hole edges 3/8" (1cm). Stitch close to inner edge, using an adjustable zipper foot.



28. Turn tape to OUTSIDE, turning ends over seam allowance. Stitch tape in place along remaining edge.

29. On OUTSIDE, pin knob section of tape to lower edge of back, placing center snap on center, lapping seam allowance, having inner edge of tape along seamline. (Make small pleats in tape on each side of center, as necessary). Make sure knob and socket sections match each other. Trim tape to lap leg hole edges 3/8" (1cm). Stitch close to inner edge, using an adjustable zipper foot.

30. Turn tape to INSIDE, turning ends over seam allowance. Stitch tape in place along remaining edge.

FINISHING

31. Sew buttons to RIGHT front under buttonholes.

32. FOR VIEW B – Sew button to pocket and extension at small dot.

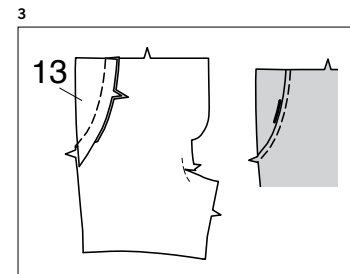
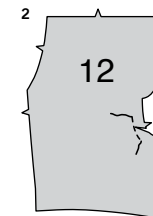
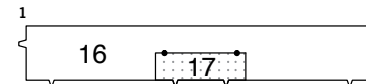
SHORTS C, PANTS D

INTERFACING

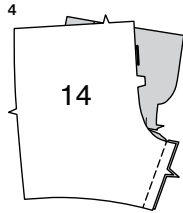
1. Pin FRONT INTERFACING (17) to WRONG side of WAISTBAND (16). Fuse in place following manufacturer's directions.

FRONT AND BACK

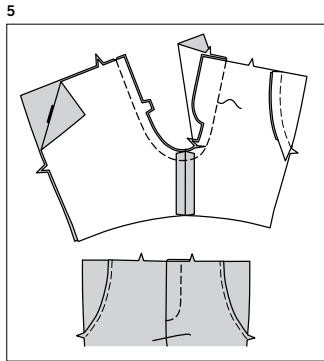
2. To reinforce FRONT (12) at center front, stitch along seamline for 1/2" (1.3cm) each side of the notch. Clip RIGHT front to stitching at the notch, being careful not to clip through stitching.



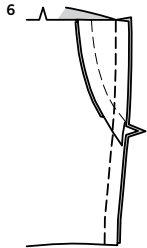
3. With RIGHT sides together and raw edges even, pin YOKE FRONT (13) to front, matching notches. Stitch. Press seam toward front, pressing yoke out. On OUTSIDE, **TOPSTITCH** front 1/4" (6mm) from seam.



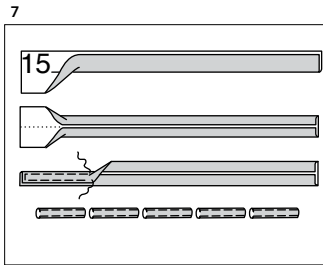
4. With RIGHT sides together and raw edges even, pin front to BACK (14) at inner leg edges, matching notches. Stitch.



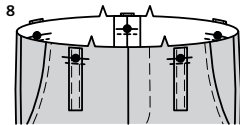
5. Pin front to back at center edges, matching inner leg seams and notches. Stitch. To reinforce the seam, stitch again over first stitching. Press seam toward LEFT front above the clip. On OUTSIDE, **TOPSTITCH** LEFT front along stitching line.



6. Stitch front to back at side edges.

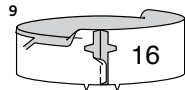


7. To make five carriers, fold CARRIER (15) in half, lengthwise with WRONG sides together. Press, setting in a crease. Open out long edges of carrier and turn them to WRONG side so that they meet at the crease. Press. Fold carrier in half lengthwise, bringing pressed edges together. Stitch close to both long edges. Cut carrier into five sections, each 3" (7.5cm) long.

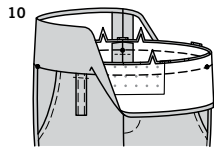


8. On OUTSIDE, pin carriers to upper edge of front and back over large dots with raw edges even. Baste along seamline. Stitch carriers to garment 1/4" (6mm) below seamline.

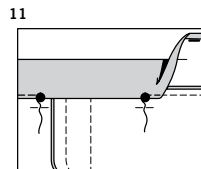
WAISTBAND



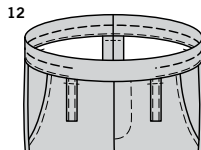
9. Stitch center back edges of WAISTBAND (16). Press under unnotched edge 5/8" (1.5cm). Trim to 1/4" (6mm).



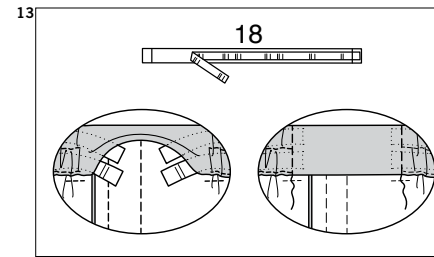
10. With RIGHT sides together and raw edges even, pin waistband to garment, matching centers and notches, placing small dots at side seams. Stitch. **TRIM SEAM.** Press seam toward waistband, pressing waistband out.



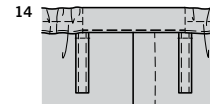
11. Fold waistband to INSIDE along foldline; press. Pin pressed edge of facing over seam, placing pins on OUTSIDE. On OUTSIDE, **EDGESTITCH** waistband (back) close to seam between the inner front large dots, catching in waistband facing on the INSIDE.



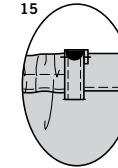
12. To form casing for elastic, stitch along stitching line, as shown.



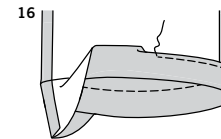
13. Cut two pieces of 1/2" (1.3cm) elastic the length of the ELASTIC GUIDE FOR WAIST (18). Transfer markings. On INSIDE, thread elastic through opening in front edge of casing, working both pieces of elastic through casing at the same time. Stitch along stitching lines, catching in ends of elastic. Stitch again to secure elastic.



14. On INSIDE, pin remaining (front) edge of casing over seam, placing pins on OUTSIDE. On OUTSIDE, **EDGESTITCH** casing close to seam, catching in pressed edge of facing on the INSIDE. Press.

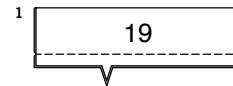


15. Press up carriers. Turn under ends 1/2" (1.3cm). Pin ends to upper edge of waistband over large dots. Stitch in place, securely.



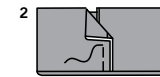
FINISHING

16. Press up 1-1/4" (3.2cm) hem allowance. Turn under raw edge 1/4" (6mm); press. Stitch close to inner pressed edge.

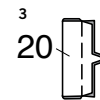


TIE E

1. Fold BOW (19) in half, lengthwise, with RIGHT sides together. Stitch notched edge in 3/8" (1cm) seam.



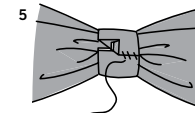
2. Turn bow RIGHT side out. Bring ends to UNDERSIDE, having ends extend 3/8" (1cm) beyond center. Stitch along center of bow.



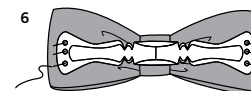
3. Fold KNOT (20) in half, lengthwise, with RIGHT sides together. Stitch notched edge in 3/8" (1cm) seam.



4. Turn knot RIGHT side out, bringing seam to center on UNDERSIDE; press.



5. Crush bow at center and place knot around center of bow, turning under and lapping one end on UNDERSIDE. **SLIPSTITCH** ends securely catching in UNDERSIDE of bow.



6. Center bow tie clip fastener on UNDERSIDE of bow. Tack in place.



Congrats!

You've completed your sewing adventure

SHARE YOUR LOOK



Post your pattern and tag us using [#simplicitypatterns](#)
[@simplicity creative group](#)
[@simplicitymccallsuk](#)
[@simplicitymccallsaustralia](#)
for a chance to be featured on our social media.

Look for more PDF patterns at [simplicity.com](#) or for customers outside the U.S. and Canada visit [sewdirect.com](#) and [sewdirect.com.au](#)

Have a question or need help with your sewing project contact us:
[Simplicity.com](#) [Sewdirect.com](#) [Sewdirect.com.au](#)



Simplicity ©2024 a division of IG Design Group Americas Inc. • Atlanta, GA 30342 USA [www.thedesigngroup.com](#) • All Rights Reserved. [www.simplicity.com](#) • Made in the U.S.A. Fabriqué aux États-Unis.

To be used for individual private home use only and not for commercial or manufacturing purposes. • A usage privé seulement et non à des fins commerciales ou de production en série. • Para uso privado solamente, no se puede utilizar con propósitos de comercialización o de producción en serie.