

S3078

Simplicity®



Average							
CHILDREN'S DRESSES							
Suggested Fabrics: Batiste, Dotted Swiss, Lawn, Lightweight Cotton/Cotton Types, Voile. C also in: Cotton/Cotton Types.							
Notions: A,B,C: One ½" (1.3cm) button, ¼yd. (0.8m) of ¼" (6mm) elastic. Also for B: 9 yds. (8.8m) of ¾" (2.2cm) flat lace or eyelet trim.							
Sizes	3	4	5	6	7	8	
BODY MEASUREMENTS: Select pattern size based on body measurements							
Chest	22	23	24	25	26	27	Ins.
Waist	20½	21	21½	22	23	23½	"
Hip	—	24	25	26	27	28	"
Back-neck to waist	9	9½	10	10½	11½	12	"
Approx. Height	38	41	44	47	50	52	"
Dress A,B	45**	2¼	2%	2%	3¼	3½	Yds.
	60**	1%	2%	2%	2%	3%	"
Dress C	45**	2%	2%	2%	2½	2%	Yds.
	60**	1%	2	2	2¼	2%	"
FINISHED GARMENT MEASUREMENTS (Includes Design and Wearing Ease)							
A,B,C Chest	28%	29%	30%	31%	32%	33%	Ins.
A,B,C Waist	24%	25%	26%	27%	28%	29%	"
Width, lower edge							
Dress A,B,C	87	88	89	90	91	92	Ins.
Finished back length from base of neck							
Dress A,B,C	21	22½	24½	26½	28½	30½	Ins.

*with nap **without nap

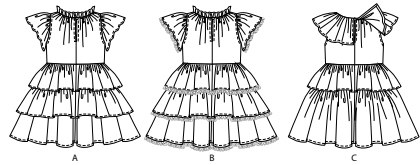
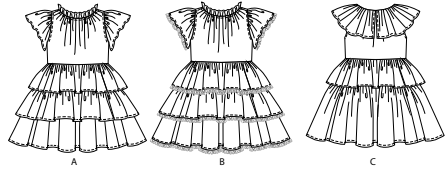
Moins Facile							
ROBES POUR ENFANTS							
Tissus Conseillés: Batiste, Plumetis, Linon, Coton/ Types coton léger, Voile. C aussi en: Coton/Types coton.							
Mercerie: A,B,C: 1 bouton de 1.3cm, 0.8m d'élastique de 6mm. Aussi pour B: 8.8m de garniture de dentelle plate ou broderie anglaise de 2.2cm.							
Tailles	3	4	5	6	7	8	
MESURES DU CORPS: Choisissez la taille du patron basée sur les mesures du corps							
Poitrine	56	58	61	64	66	69	cm
Taille	52	53	55	56	58	60	"
Hanches	—	61	64	66	69	71	"
Dos du cou à la taille	23	24	25.5	27	29.5	31	"
Taille approx.	97	104	112	119	127	132	"
Robe A,B	115cm*	2.1	2.3	2.6	3.0	3.2	m
	150cm*	1.7	1.9	2.2	2.4	2.6	"
Robe C	115cm*	2.2	2.2	2.2	2.3	2.4	m
	150cm*	1.7	1.7	1.8	1.9	2.1	"
MESURES DES VÊTEMENTS FINI (Motif et aisance de port compris)							
A,B,C Poitrine	73	76	78	81	83	86	cm
A,B,C Taille	63	65	68	70	73	76	"
Largeur à l'ourlet							
Robe A,B,C	221	224	226	229	231	234	cm
Longueur finie – dos, votre nuque à l'ourlet							
Robe A,B,C	53	57	62	67	72	77	cm

*avec sens **sans sens

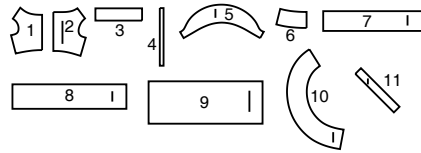


Simplicity®

Thank you for purchasing this Simplicity pattern.
We made every effort to provide you with a high quality product.



11 PIECES



- 1 Bodice Front-A,B,C
- 2 Bodice Back-A,B,C
- 3 Neck Ruffle-A,B
- 4 Elastic Guide for Neck-A,B,C
- 5 Sleeve-A,B
- 6 Skirt Front and Back-A,B,C
- 7 Upper Ruffle-A,B,C
- 8 Middle Ruffle-A,B
- 9 Lower Ruffle-A,B,C
- 10 Neck Ruffle-C
- 11 Armhole Facing-C



www.simplicity.com



info@simplicity.com



1-888-588-2700

General Directions

The Pattern

- SYMBOLS**
- ↔ GRAIN LINE Place on straight grain of fabric parallel to selvage
 - PLACE SOLID LINE on fold of fabric.
 - CENTER FRONT OR BACK of garment.
 - ▽ NOTCHES
 - DOTS
 - CUTTING LINE
 - == LENGTHEN OR SHORTEN LINES

SEAM ALLOWANCE: 5/8" (1.5cm) unless otherwise stated is included but not printed on MULTI-SIZE PATTERNS. Mark your size with colored felt tip pen. See chart on tissue for how to use MULTI-SIZE PATTERNS.

ADJUST IF NEEDED
Make adjustments before placing pattern on fabric.

TO LENGTHEN:
Cut pattern between lengthen or shorten lines. Spread pattern evenly, the amount needed and tape to paper.

TO SHORTEN:
At lengthen or shorten lines, make an even pleat taking up amount needed. Tape in place.

When lengthen or shorten lines are not given, make adjustments at lower edge of pattern.

Cutting/Marking

BEFORE CUTTING:

PRESS pattern pieces with a warm dry iron. PRE-SHRINK fabric by pre-washing washables or steam-pressing non-washables.

CIRCLE your cutting layout.

PIN pattern to fabric as shown in Cutting Layouts.

• FOR DOUBLE THICKNESS: Fold fabric with RIGHT sides together.

• FOR SINGLE THICKNESS: Place fabric RIGHT side up.

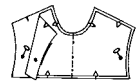
• FOR PILE, SHADED OR ONE WAY DESIGN FABRICS: Use "with nap" layouts

AFTER CUTTING:

Transfer markings to WRONG side of fabric before removing pattern. Use pin and chalk method or dressmaker's tracing paper and wheel.

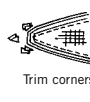
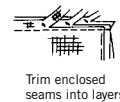
To Quick Mark:

- Snip edge of fabric to mark notches, ends of fold lines and center lines.
- Pin mark dots.



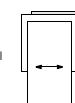
Sewing

- SEW garment following **Sewing Directions**.
- PIN or machine-baste seams matching notches.
- STITCH 5/8" (1.5 cm) seams unless otherwise stated.
- PRESS seams open unless otherwise indicated clipping when necessary so seams will lie flat.
- TRIM seams to reduce bulk, as shown below.

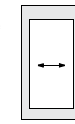


SPECIAL CUTTING NOTES

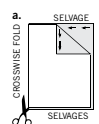
★ If layout shows a piece extending past fold, cut out all pieces except piece that extends.



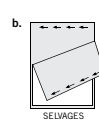
Open out fabric to single thickness. Cut extending piece on RIGHT side of fabric in position shown.



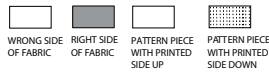
✱ Mark small arrows along both selvages indicating direction of nap or design. Fold fabric crosswise with RIGHT sides together, and cut along fold (a).



Turn one fabric layer around so arrows on both layers go in the same direction. Place RIGHT sides together (b).



Cutting Layouts

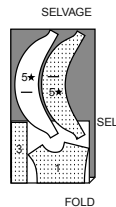
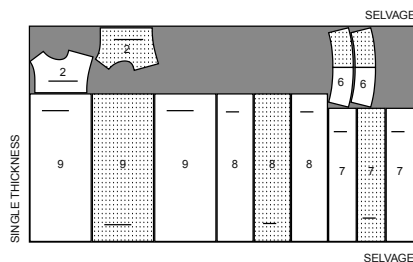


POSITION OF PATTERN PIECES MAY VARY SLIGHTLY ACCORDING TO YOUR PATTERN SIZE

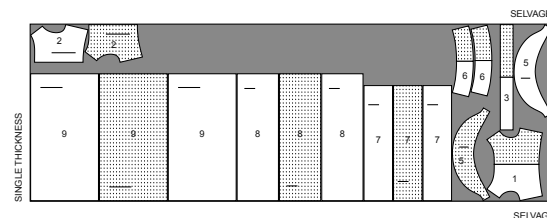
DRESS A,B

USE PIECES 1 2 3 5 6 7 8 9

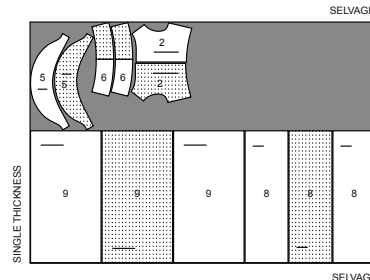
45" (115CM)
WITH NAP
SIZES 3 4 5



45" (115CM)
WITH NAP
SIZES 6 7 8



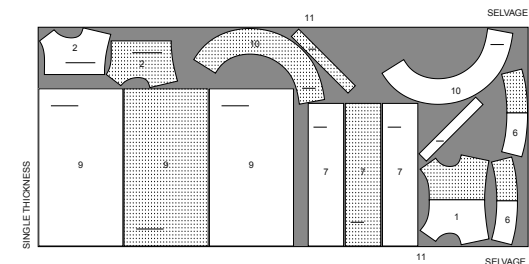
60" (150CM)
WITH NAP
ALL SIZES



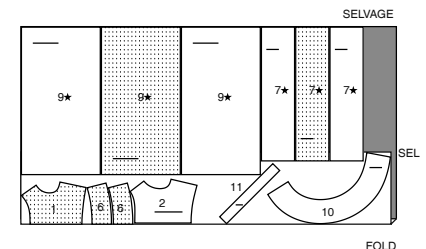
DRESS C

USE PIECES 1 2 6 7 9 10 11

45" (115CM)
WITH NAP
ALL SIZES



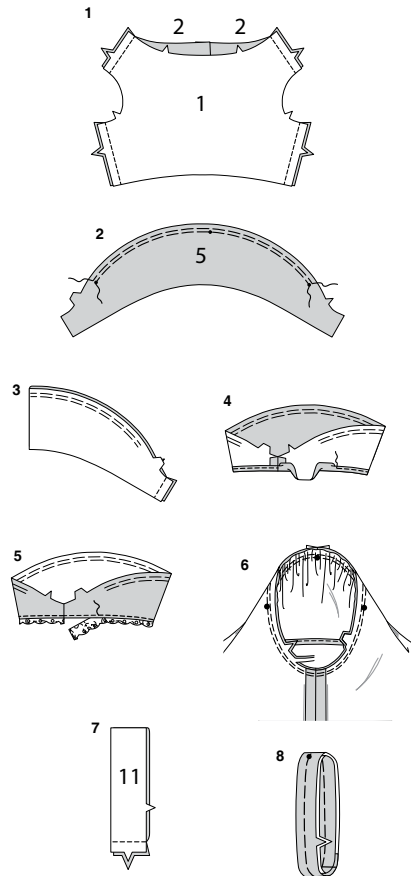
60" (150CM)
WITH NAP
ALL SIZES



SEWING TUTORIALS



Build your skills viewing short, easy-to-follow videos at simplicity.com/sewingtutorials



Sewing Directions

FABRIC KEY RIGHT SIDE WRONG SIDE INTERFACING LINING LINING

Sewing methods in **BOLD TYPE** have Sewing Tutorial Video available. Scan QR CODE to watch videos.

EASE/GATHER - See **Gathering**: "sewing two row gathers" video.

NARROW HEM - See **Hems**: "sewing narrow hems" video.

STAYSTITCH - See **Machine Stitches**: "how to stay-stitching" video.

UNDERSTITCH - See **Machine Stitches**: "how to understitch" video.

DRESS A, B, C

NOTE: Under each sub-heading, the first View will be illustrated, unless otherwise indicated.

BODICE

1. Stitch **BODICE FRONT** (1) to **BODICE BACK** (2) sections at shoulders and side seams.

SLEEVE A, B

2. **GATHER** upper edge of **SLEEVE** (5) between outer small dots.

3. Stitch sleeve seam.

4. Make **NARROW HEM** at lower edge of sleeve.

VIEW B:

5. With **RIGHT** sides up, lap lower edge of sleeve over trim, having straight edge of trim slightly over hem stitching, turning in ends at seam. Pin in place. Stitch in place along hem stitching.

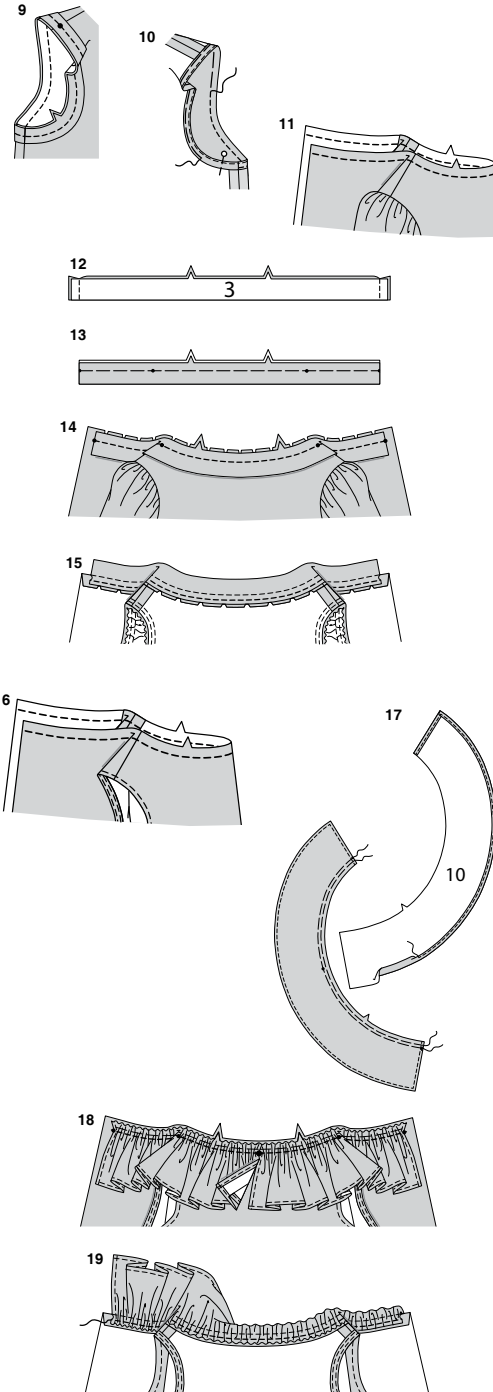
VIEWS A, B:

6. With **RIGHT** sides together, pin sleeve to dress at armhole edge, placing center small dot at shoulder seam, matching remaining small dots. Adjust gathers evenly; baste. Stitch. Stitch again 1/4" (6mm) away in seam allowance. Trim close to stitching. Press seam allowances flat. Turn seam toward sleeve.

ARMHOLE C

7. Stitch ends of **ARMHOLE FACING** (11) together.

8. With **WRONG** sides together, fold facing in half lengthwise. Baste raw edges.



9. On **OUTSIDE**, pin armhole facing to armhole edge, matching notches, placing small dot at shoulder seam. Stitch. Trim seam.

10. **UNDERSTITCH** facing. Turn facing to **INSIDE** along seam; press. Baste close to inner edge. On **OUTSIDE**, stitch along basting.

VIEWS A, B:

11. **STAYSTITCH** neck edge.

12. With **RIGHT** sides together, fold **NECK RUFFLE** (3) in half lengthwise. Stitch ends. Trim seams.

13. Turn ruffle **RIGHT** side out. Press. Baste raw edges.

14. On **OUTSIDE**, pin ruffle to neck edge, matching centers, placing inner small dots at shoulder seams, matching remaining small dots, clipping neck edge where necessary. Baste. Stitch. Do not trim seam.

15. Press seam toward bodice, pressing ruffle out. To form casing for elastic, stitch seam allowances in place 1/4" (6mm) from raw edge.

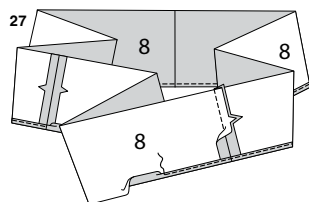
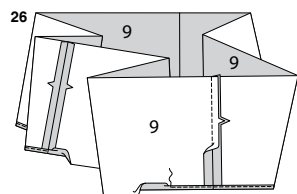
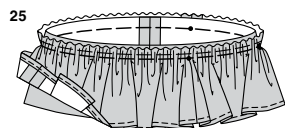
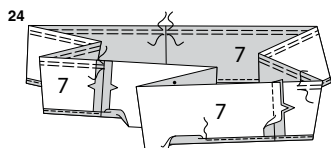
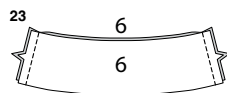
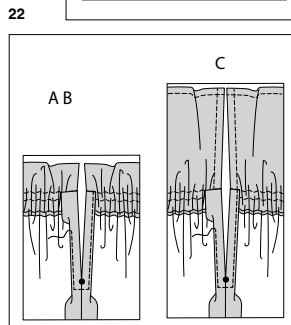
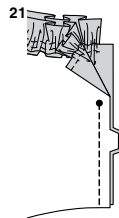
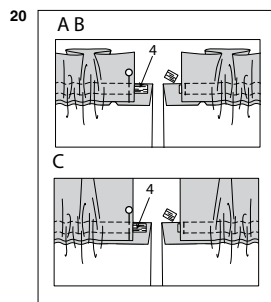
VIEW C:

16. **STAYSTITCH** neck edge.

17. Make **NARROW HEM** at lower, front and back edges of each **NECK RUFFLE** (10). **GATHER** upper edge of each ruffle.

18. With **RIGHT** sides up, pin ruffles to neck edge, matching small and large dots and notches. Adjust gathers evenly. Baste. Stitch neck edge along seamline. Do not trim seam allowances.

19. Press neck seam allowances toward bodice along stitching. To form casing for elastic, stitch seam allowances in place 1/4" (6mm) from raw edge, keeping neck ruffle free.

**ALL VIEWS:**

20. Cut elastic the length of ELASTIC GUIDE FOR NECK (4). Insert elastic through casing, extending ends 5/8" (1.5cm) past center back edges. Stitch across ends of casing, catching elastic in stitching. Trim elastic close to stitching.

21. Stitch back together along center back seam, leaving open above large dot.

22. Make **NARROW HEM** at bodice back opening edges, tapering to nothing below large dot, squaring stitches below opening.

SKIRT AND FINISHING

23. Stitch **SKIRT FRONT AND BACK** (6) sections together at side seams.

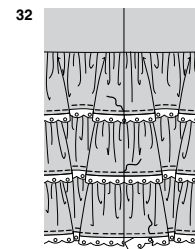
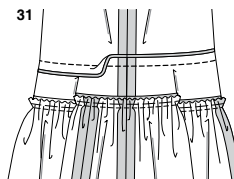
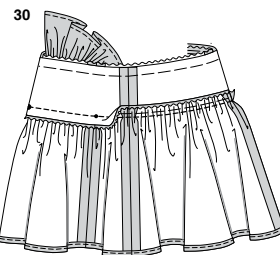
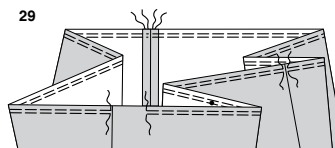
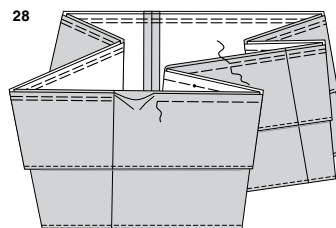
24. Stitch **UPPER RUFFLE** (7) sections together at notched ends. **GATHER** upper edge of ruffle between seams. Make **NARROW HEM** at lower edge of ruffle.

25. With **RIGHT** sides up, pin ruffle to upper edge of skirt, matching large dots, placing two seams at small dots and remaining seam at center back. Adjust gathers evenly; baste.

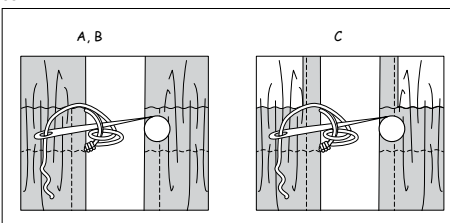
26. Stitch **LOWER RUFFLE** (9) sections together at notched ends. Make **NARROW HEM** at lower edge of ruffle.

VIEWS A, B:

27. Stitch **MIDDLE RUFFLE** (8) sections together at notched ends. Make **NARROW HEM** at lower edge of ruffle.



33



28. With **RIGHT** sides up, pin middle ruffle to upper edge of lower ruffle, matching large dots and seams. Baste. **GATHER** upper edge of ruffle between seams.

VIEW C:

29. **GATHER** upper edge of lower ruffle between seams.

ALL VIEWS:

30. With **RIGHT** together, pin remaining ruffle(s) to lower edge of skirt, matching large dots, placing two seams at small dots and remaining seam at center back. Adjust gathers evenly; baste. Stitch, keeping upper ruffle free. Trim seam. Press seam up.

31. With **RIGHT** sides together, pin skirt to lower edge of bodice, matching centers. Stitch. Trim seam. Press seam up.

VIEW B:

32. For each ruffle, with **RIGHT** sides up, lap lower edge of ruffle over trim, having straight edge of trim slightly over hem stitching, turning in ends at center back seam. Pin in place. Stitch in place along hem stitching.

ALL VIEWS:

33. Sew button to upper right back opening edge, as shown. Make thread loop at upper left back opening edge, opposite button.



Congrats!

You've completed your sewing adventure

SHARE YOUR LOOK



Post your pattern and tag us using [#simplicitypatterns](#)
[@simplicity_creative_group](#)
[@simplicitymccallsuk](#)
[@simplicitymccallsaustralia](#)

for a chance to be featured on our social media.

Look for more PDF patterns at simplicity.com or for customers outside the U.S. and Canada visit sewdirect.com and sewdirect.com.au

Have a question or need help with your sewing project contact us:

Simplicity.com

Sewdirect.com

Sewdirect.com.au



Simplicity ©2024 a division of IG Design Group Americas Inc. • Atlanta, GA 30342 USA www.thedesigngroup.com • All Rights Reserved. www.simplicity.com • Made in the U.S.A. Fabriqué aux États-Unis.

To be used for individual private home use only and not for commercial or manufacturing purposes. • A usage privé seulement et non à des fins commerciales ou de production en série. • Para uso privado solamente, no se puede utilizar con propósitos de comercialización o de producción en serie.