

S3076

Simplicity®



Designed and printed in USA.

Average

MEN'S TOPS, SHORTS AND PANTS

**Suggested Fabrics:** A,B: Chambray, Cotton Blends, Linen Blends, Poplin, Shirtings. C,D: Chino, Cotton Blends, Lightweight Stretch Wovens, Linen Blends. **Lining C,D:** Cotton Blends, Polyester Blends. **Interfacing:** Lightweight Fusible.

**Notions:** A,B: ½" (1.3cm) buttons: Five for A, ten for B. C,D: One 7" (18cm) zipper (adjust to fit), two ½" (1.5cm) buttons.

Sizes	34	36	38	40	42	44	46	48	50	52
European	44	46	48	50	52	54	56	58	60	62

**BODY MEASUREMENTS:** Select pattern size based on body measurements

Chest	34	36	38	40	42	44	46	48	50	52	Ins.
Waist	28	30	32	34	36	39	42	44	46	48	"
Hip	35	37	39	41	43	45	47	49	51	53	"
Neckband	14	14½	15	15½	16	16½	17	17½	18	18½	"

Top A	60**	1%	1¾	1¾	1¾	1¾	1¾	1¾	1¾	1¾	Yds.
Interfacing	20"	¾ yd.									

Top B	60**	2%	2%	2¼	2¼	2¼	2¼	2¼	2¼	2½	Yds.
Interfacing	20"	¾ yd.									

Shorts C	60**	1½	1½	1½	1½	1½	1½	1½	1½	1½	Yds.
----------	------	----	----	----	----	----	----	----	----	----	------

Lining C,D	45***	¾ yd.									
Interfacing	20"	1 yd.									

Pants D	60**	1%	1%	2	2¼	2¼	2¼	2¼	2½	2½	Yds.
---------	------	----	----	---	----	----	----	----	----	----	------

**FINISHED GARMENT MEASUREMENTS (Includes Design and Wearing Ease)**

A,B Chest	44	46	48	50	52	54	56	58	60	62	Ins.
A,B Waist	44	46	48	50	52	54	56	58	60	62	"
C,D Waist	30½	32½	34½	36½	38½	40½	42½	44½	46½	48½	"
C,D Hip	39½	41½	43½	45½	47½	49½	51½	53½	55½	57½	"

**Width, lower edge**

Top A,B	44	46	48	50	52	54	56	58	60	62	Ins.
---------	----	----	----	----	----	----	----	----	----	----	------

**Width, each leg**

Shorts C	20½	21	21½	22	22½	23	23½	24	24½	25	Ins.
----------	-----	----	-----	----	-----	----	-----	----	-----	----	------

Pants D	17	17½	18	18½	19	19½	20	20½	21	21½	"
---------	----	-----	----	-----	----	-----	----	-----	----	-----	---

**Finished back length from base of neck**

Top A,B	27¼	27½	27¾	28	28¼	28½	28¾	29	29¼	29½	Ins.
---------	-----	-----	-----	----	-----	-----	-----	----	-----	-----	------

**Finished side length from waist**

Shorts C	23½	23¾	24	24¼	24½	24¾	25	25¼	25½	25¾	Ins.
----------	-----	-----	----	-----	-----	-----	----	-----	-----	-----	------

Pants D	41¼	41½	41¾	42	42¼	42½	42¾	43	43¼	43½	"
---------	-----	-----	-----	----	-----	-----	-----	----	-----	-----	---

\*with nap \*\*without nap

Moins Facile

HAUTS, SHORT ET PANTALON POUR HOMMES

**Tissus Conseillés:** A,B: Chambray, Cotonnades, Lin mélangés, Popeline, Shirtings. C,D: Chino, Cotonnades, Tissus tissés extensibles légers, Lin mélangés. **Doubleure C,D:** Cotonnades, Mélangés de polyester. **Entoilage:** Thermocollant léger.

**Mercerie:** A,B: Boutons de 1.3cm: 5 pour A, 10 pour B. C,D: 1 fermeture à glissière de 18cm (adaptez pour ajuster), 2 boutons de 1.5cm.

Tailles	34	36	38	40	42	44	46	48	50	52
Françaises/Eur	44	46	48	50	52	54	56	58	60	62

**MESURES DU CORPS:** Choisissez la taille du patron basée sur les mesures du corps

Poitrine	87	92	97	102	107	112	117	122	127	132	cm
Taille	71	76	81	87	92	99	107	112	117	122	"
Hanches	89	94	99	104	109	114	119	124	130	135	"
Bande du Col	35.5	37	38	39.5	40.5	42	43	44.5	45.5	47	"

Haut A	150cm*	1.5	1.5	1.6	1.6	1.6	1.6	1.6	1.7	1.7	1.7	m
Entoilage	51cm	- 0.7m										

Haut B	150cm*	1.9	1.9	2.1	2.1	2.1	2.1	2.1	2.1	2.2	2.2	m
Entoilage	51cm	- 0.8m										

Short C	150cm*	1.4	1.4	1.4	1.4	1.4	1.4	1.4	1.5	1.5	1.5	m
---------	--------	-----	-----	-----	-----	-----	-----	-----	-----	-----	-----	---

Doubleure C,D	115cm	- 0.5m									
Entoilage	51cm	- 0.8m									

Pantalon D	150cm*	1.7	1.7	1.8	2.1	2.1	2.1	2.1	2.3	2.4	2.4	m
------------	--------	-----	-----	-----	-----	-----	-----	-----	-----	-----	-----	---

**MESURES DES VÊTEMENTS FINI (Motif et aisance de port compris)**

A,B Poitrine	112	117	122	127	132	137	142	147	152	157	cm
A,B Taille	112	117	122	127	132	137	142	147	152	157	"
C,D Taille	77	83	88	93	98	103	108	113	118	123	"
C,D Hanches	100	105	110	116	121	126	131	136	141	146	"

**Largeur à l'ourlet**

Haut A,B	112	117	122	127	132	137	142	147	152	157	cm
----------	-----	-----	-----	-----	-----	-----	-----	-----	-----	-----	----

**Largeur, chaque jambe**

Short C	52	53	55	56	57	58	60	61	62	64	cm
---------	----	----	----	----	----	----	----	----	----	----	----

Pantalon D	43	44	46	47	48	50	51	52	53	55	"
------------	----	----	----	----	----	----	----	----	----	----	---

**Longueur finie – dos, votre nuque à l'ourlet**

Haut A,B	69	70	70	71	72	72	73	74	74	75	cm
----------	----	----	----	----	----	----	----	----	----	----	----

**Longueur finie – côté, taille à l'ourlet**

Short C	60	60	61	62	62	63	64	64	65	65	cm
---------	----	----	----	----	----	----	----	----	----	----	----

Pantalon D	105	105	106	107	107	108	109	109	110	110	"
------------	-----	-----	-----	-----	-----	-----	-----	-----	-----	-----	---

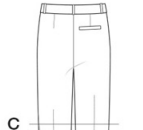
\*avec sens \*\*sans sens



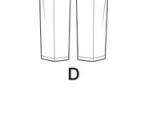
A



B



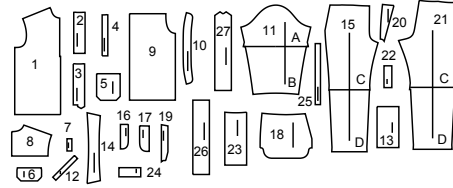
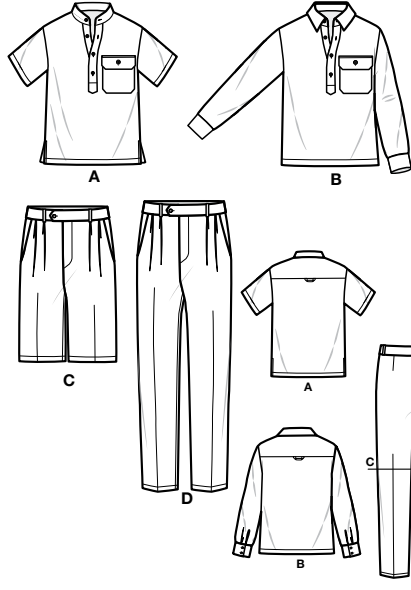
C



D

# Simplicity

Thank you for purchasing this Simplicity pattern. We made every effort to provide you with a high quality product.



- 1 Front-A,B
- 2 Right Placket-A,B
- 3 Left Placket-A,B
- 4 Placket Interfacing-A,B
- 5 Pocket-A,B
- 6 Flap-A,B
- 7 Loop-A,B
- 8 Yoke Back-A,B
- 9 Back-A,B
- 10 Neckband-A,B
- 11 Sleeve-A,B
- 12 Continuous Lap-B
- 13 Cuff-B
- 14 Collar-B
- 15 Front-C,D
- 16 Right Fly-C,D
- 17 Left Fly Facing-C,D
- 18 Side Front and Pocket-C,D
- 19 Pocket Facing-C,D
- 20 Yoke Front-C,D
- 21 Back-C,D
- 22 Welt-C,D
- 23 Back Pocket-C,D
- 24 Back Pocket Facing-C,D
- 25 Carrier-C,D
- 26 Right Waistband-C,D
- 27 Left Waistband-C,D

## General Directions

### The Pattern

- SYMBOLS**
- ↔ GRAIN LINE Place on straight grain of fabric parallel to selvage
  - ⇄ PLACE SOLID LINE on fold of fabric.
  - CENTER FRONT OR BACK of garment.
  - ▽▽▽ NOTCHES
  - DOTS
  - CUTTING LINE
  - == LENGTHEN OR SHORTEN LINES

SEAM ALLOWANCE: 5/8" (1.5cm) unless otherwise stated is included but not printed on MULTI-SIZE PATTERNS. Mark your size with colored felt tip pen. See chart on tissue for how to use MULTI-SIZE PATTERNS.

**ADJUST IF NEEDED**  
Make adjustments before placing pattern on fabric.

**TO LENGTHEN:**  
Cut pattern between lengthen or shorten lines. Spread pattern evenly, the amount needed and tape to paper.

**TO SHORTEN:**  
At lengthen or shorten lines, make an even pleat taking up amount needed. Tape in place.

When lengthen or shorten lines are not given, make adjustments at lower edge of pattern.

### Cutting/Marking

**BEFORE CUTTING:**  
PRESS pattern pieces with a warm dry iron. PRE-SHRINK fabric by pre-washing washables or steam-pressing non-washables.

CIRCLE your cutting layout.  
PIN pattern to fabric as shown in Cutting Layouts.

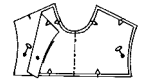
• FOR DOUBLE THICKNESS: Fold fabric with RIGHT sides together.

• FOR SINGLE THICKNESS: Place fabric RIGHT side up.

• FOR PILE, SHADED OR ONE WAY DESIGN FABRICS: Use "with nap" layouts

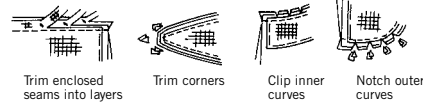
**AFTER CUTTING:**  
Transfer markings to WRONG side of fabric before removing pattern. Use pin and chalk method or dressmaker's tracing paper and wheel.

**To Quick Mark:**  
• Snip edge of fabric to mark notches, ends of fold lines and center lines.  
• Pin mark dots.



### Sewing

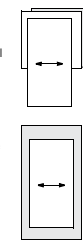
- SEW garment following **Sewing Directions**.
- PIN or machine-baste seams matching notches.
- STITCH 5/8" (1.5 cm) seams unless otherwise stated.
- PRESS seams open unless otherwise indicated clipping when necessary so seams will lie flat.
- TRIM seams to reduce bulk, as shown below.



### SPECIAL CUTTING NOTES

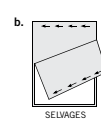
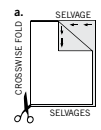
★ If layout shows a piece extending past fold, cut out all pieces except piece that extends.

Open out fabric to single thickness. Cut extending piece on RIGHT side of fabric in position shown.

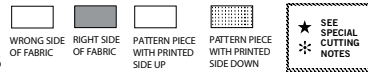


✳ Mark small arrows along both selvages indicating direction of nap or design. Fold fabric crosswise with RIGHT sides together, and cut along fold (a).

Turn one fabric layer around so arrows on both layers go in the same direction. Place RIGHT sides together (b).



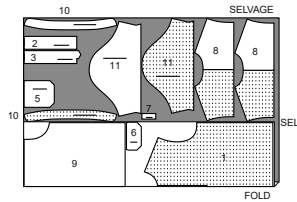
## Cutting Layouts



POSITION OF PATTERN PIECES MAY VARY SLIGHTLY ACCORDING TO YOUR PATTERN SIZE

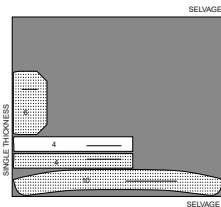
### TOP A

60" (150CM) WITH NAP ALL SIZES



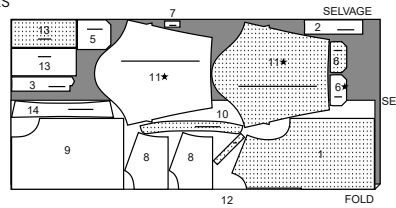
### INTERFACING A

20" (51CM) WITHOUT NAP ALL SIZES



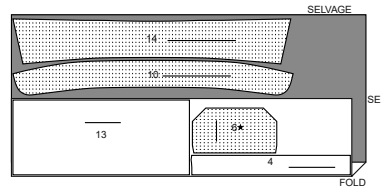
### TOP B

60" (150CM) WITH NAP ALL SIZES



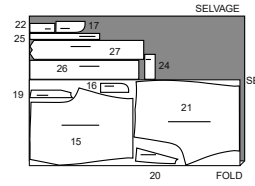
### INTERFACING B

20" (51CM) WITHOUT NAP ALL SIZES



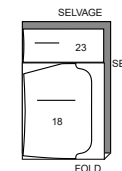
### SHORTS C

60" (150CM) WITH NAP ALL SIZES



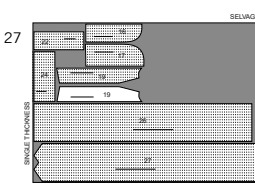
### LINING C,D

45" (115CM) WITHOUT NAP ALL SIZES



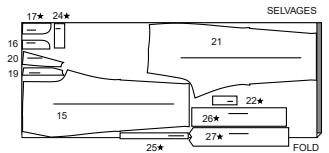
### INTERFACING C,D

20" (51CM) WITHOUT NAP ALL SIZES

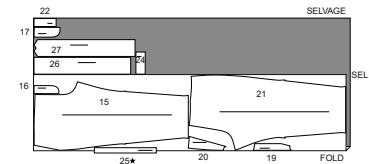


### PANTS D


60" (150CM) WITH NAP ALL SIZES 34 36 38 40 42 44 46



60" (150CM) WITH NAP ALL SIZES 48 50 52



## Sewing Directions

**FABRIC KEY** 

Read **General Directions** on page 1 before you begin.

Sewing methods in **BOLD TYPE** have Sewing Tutorial Video available. Scan **QR CODE** to watch videos:

**BELT LOOP/CARRIER** – See **Loops and Straps**: “how to sew belt loops” video.

**CATCH STITCH** – See **Hand Stitching**: “hand sewing a catch stitch” video.

**EASE/GATHER** – See **Gathering**: “sewing two row gathers” video.

**EDGE STITCH** – See **Machine Stitches**: “how to sew an edgestitch” video.

**FINISH** – See **Seams**: “how to finish seam allowances” video.

**FLAT DART** – See **Darts**: “sewing flat dart” video.

**FLY FRONT ZIPPER** – See **Zippers**: “sewing a fly front zipper” video.

**NARROW HEM** – See **Hems**: “sewing narrow hems” video.

**REINFORCE** – See **Machine Stitches**: “how to reinforce seams” video.

**SET IN SLEEVE** – See **Armholes/Sleeves**: “sewing a set in sleeve” video.

**SLIPSTITCH** – See **Hand Stitching**: “how to slip stitch” video.

**STAYSTITCH** – See **Machine Stitches**: “how to do stay stitching” video.

**STITCH IN THE DITCH** – See **Machine Stitches**: “how to stitch in the ditch” video.

**TACK** – See **Hand Stitching**: “how to tack” video.

**TOPSTITCH** – See **Machine Stitches**: “how to topstitch” video.

**TRIM SEAM** – See **Seams**: “how to trim, clip and layer seams” video.

**UNDERSTITCH** – See **Machine Stitches**: “how to understitch” video.

**PATTERN PIECES WILL BE IDENTIFIED BY NUMBERS THE FIRST TIME THEY ARE USED.**

**STITCH 5/8" (1.5CM) SEAMS WITH RIGHT SIDES TOGETHER UNLESS OTHERWISE STATED.**

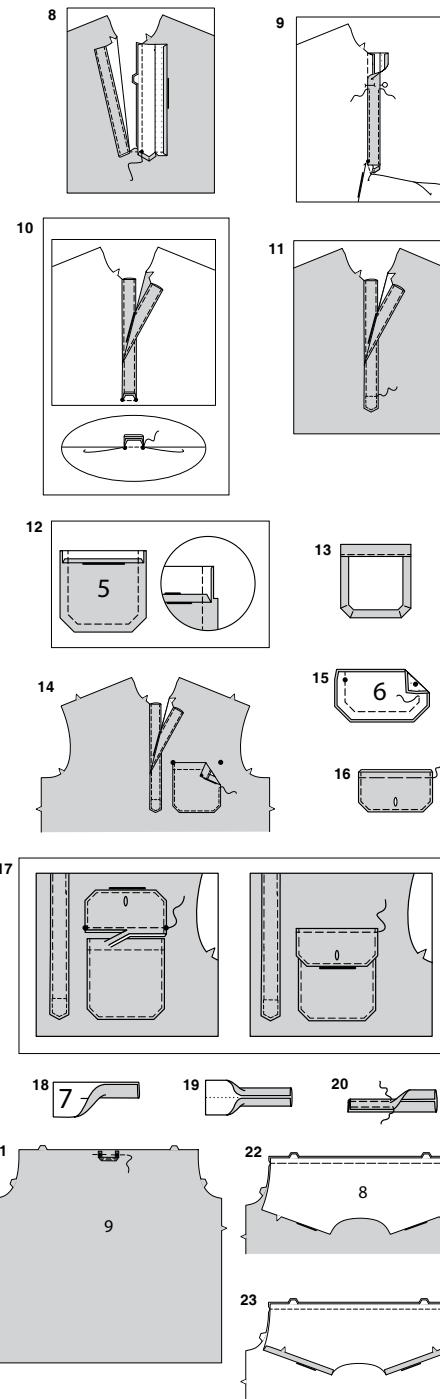
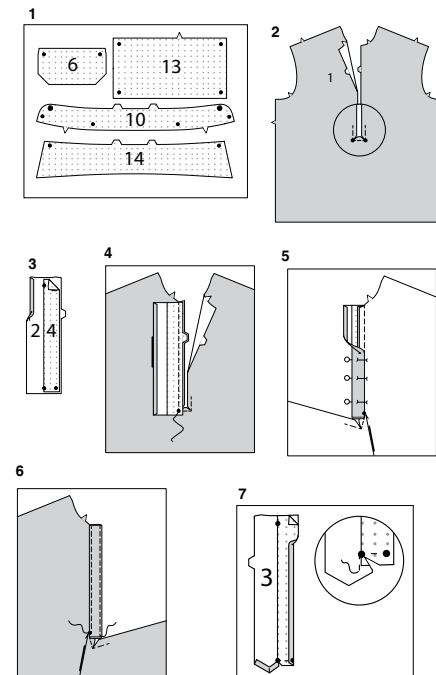
### TOP A, B

#### INTERFACING

1. Pin **INTERFACING** to wrong side of each matching **FABRIC** section. Fuse, following manufacturer's instructions.

#### FRONT

2. **REINFORCE FRONT** (1), along stitching lines, pivoting with needle in fabric at small dots. Clip diagonally to small dots at corners, being careful not to cut through stitching.
3. Apply **PLACKET INTERFACING** (4) to notched side of **RIGHT PLACKET** (2). Fuse in place following manufacturer's directions. Transfer markings. Press under 3/8" (1cm) on unnotched edge of placket.
4. With **RIGHT** sides together, pin placket to **RIGHT** front opening edge, matching small dots. Stitch in 3/8" (1cm) seam above small dot; back-stitch at small dot to reinforce seam.
5. Press placket out, pressing seam toward placket and bringing lower edge of placket to **INSIDE** over clipped edge. Turn placket to **INSIDE** along fold line; press. Pin pressed edge of placket over seam, matching small dots, placing pins on **OUTSIDE**.
6. On **OUTSIDE**, stitch placket close to seam above small dot, catching in pressed edge on **INSIDE**, keeping lower clipped edge out of the way. **EDGE STITCH** front edge of placket.
7. Apply **INTERFACING** to unnotched side of **LEFT PLACKET** (3). Fuse in place following manufacturer's directions. Transfer markings. **REINFORCE** along small dot, at inner corner as shown. Clip to small dot, being careful not to clip through stitching. Press under 3/8" (1cm) on unnotched edge and lower pointed edges of placket.



8. With **RIGHT** sides together, pin placket to **LEFT** front opening edge, matching small dots. Stitch in 3/8" (1cm) seam above small dot; back-stitch at small dot to reinforce seam.
9. Press placket out, pressing seam toward placket and bringing lower edge of placket to **INSIDE** over clipped edge. Turn placket to **INSIDE** along fold line; press. Pin pressed edge of placket over seam, matching small dots, placing pins on **OUTSIDE**. On **OUTSIDE**, stitch placket close to seam above small dot, catching in pressed edge on **INSIDE**, keeping lower clipped edge out of the way. **EDGE STITCH** front edge of placket.
10. On **INSIDE**, lap **RIGHT** front over **LEFT**, matching centers and small dots. Pin the lower edges of placket to clipped edge of front, matching centers and small dots. Turn the front down so that the **RIGHT** sides are together and away from the lower edge of placket. Stitch across lower edge of placket and clipped edges between small dots in a 3/8" (1cm) seam, keeping pointed edge of **LEFT** placket free. Back-stitch at dots to reinforce seam.
11. Press placket and clipped edges down. **EDGE STITCH** lower edges of **LEFT** placket and along stitching line, through all thicknesses, connecting to previous stitching, as shown.

#### POCKET

12. Press under 1/4" (6mm) on upper edge of **POCKET** (5). Turn upper edge to **OUTSIDE** along fold line, forming facing. Stitch along seam line on raw edges. Trim seam allowance in the facing area to 1/4" (6mm).
13. Turn corners **RIGHT** side out, turning facing to the **WRONG** side; press, pressing under raw edges along stitching. Stitch facing close to inner edge.
14. On **OUTSIDE**, pin pocket to **LEFT** front matching large dots. **EDGE STITCH** side and lower edges.
15. With **RIGHT** sides together, stitch **FLAP** (6) sections together, leaving edge with small dots open. **TRIM** seam.
16. Turn flap; press. Make buttonhole in flap at markings. Baste raw edges together. **EDGE STITCH** outer edges of flap.
17. On **OUTSIDE**, pin flap to front, placing basting along flap line, matching small dots, as shown. Stitch along basting. Trim close to stitching. Turn flap down; press. **TOPSTITCH** close to upper edge.

#### BACK AND SEAMS

18. Fold **LOOP** (7) in half, lengthwise with **WRONG** sides together. Press, setting in a crease.
19. Open out long edges of loop and turn them to **WRONG** side so that they meet at the crease. Press.
20. Fold loop in half lengthwise, bringing pressed edges together. Stitch close to both long edges. **TIP**: See **LOOPS AND STRAPS**: “how to sew belt loops” video for more assistance.
21. On **OUTSIDE**, pin loop to **BACK** (9), centering ends at small dots. Baste.
22. With **RIGHT** sides together, pin **YOKE BACK** (8) to upper edge of back, matching notches. Baste.
23. Press under seam allowance on shoulder edges of yoke back facing. On **INSIDE**, pin **RIGHT** side of remaining yoke back facing to back, matching notches. Baste. Stitch through all thicknesses.

#### SEWING TUTORIALS

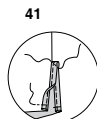
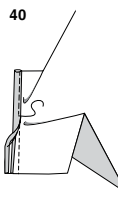
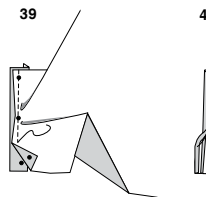
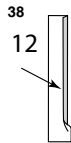
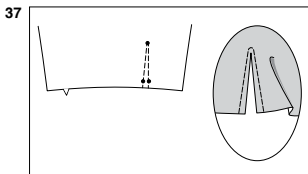
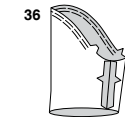
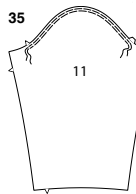
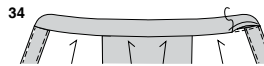
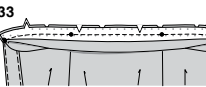
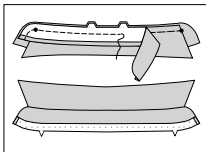
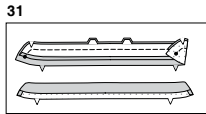
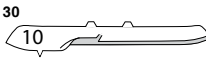
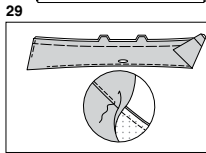
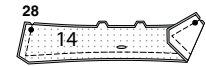
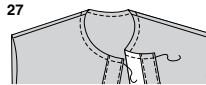
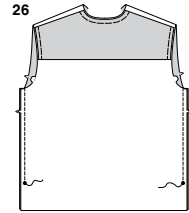
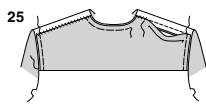
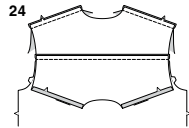


SCAN ME

Build your skills viewing short, easy-to-follow videos at [simplicity.com/sewingtutorials](http://simplicity.com/sewingtutorials)

## S3076

3 of 4



**24.** Press yoke section up. With **RIGHT** sides together, stitch front to back at shoulder seams. Press seams toward back.

**25.** Press yoke facing up, over seam, having raw edges even. **SLIPSTITCH** facing over shoulder seams. Baste raw edges together.  
**OPTIONAL:** If you prefer, **STITCH IN THE DITCH** or "groove" of yoke seam catching in yoke facing on **INSIDE**.

**26.** Stitch front to back at side seams, ending at large dots for **View A**.

### COLLAR AND NECK BAND

**27.** **STAYSTITCH** neck edge of garment, as shown.

**28. VIEW B-** Make buttonhole in interfaced **COLLAR** (14) section. Stitch **COLLAR** (14) sections together, leaving notched edge open. **TRIM**.

**29. UNDERSTITCH** underside of collar as far as possible. Turn. Press. Baste raw edges together.

**30. VIEW A, B-** Turn in 5/8" (1.5cm) seam allowance on single notched edge of uninterfaced **NECK BAND** (10) section. Press, easing in fullness. **TRIM** pressed seam allowance to 3/8" (1cm).

**31. VIEW A-** Pin neck band sections together matching markings, having raw edges even. Stitch in a 3/8" (1cm), leaving neck edge open. **TRIM**. Turn. Press.  
**OPTIONAL:** **EDGE STITCH** outer edges of neck band, if you prefer.

**32. VIEW B-** With buttonhole facing down, pin interfaced side of collar, to interfaced collar band between large dots. Baste. Pin uninterfaced collar band over collar; baste. Stitch in a 3/8" (1cm), leaving neck edge open. **TRIM**. Turn. Press.

**33. VIEW A, B-** Pin collar band to neck edge, placing small dots at shoulder seams, clipping garment neck edge where necessary. Stitch, keeping pressed edge free. **TRIM**. Press seam toward collar band.

**34. SLIPSTITCH** pressed edge over seam.  
**OPTIONAL:** **EDGE STITCH** neck band seam, if you prefer.

### SLEEVE

**35. EASESTITCH** upper edge of **SLEEVE** (11) between notches.

**36. VIEW B-** Stitch sleeve seam.

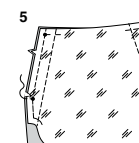
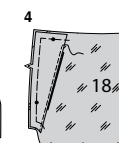
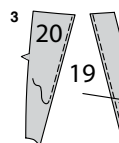
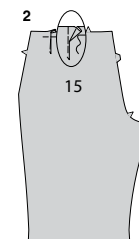
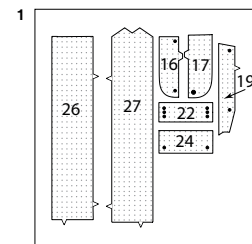
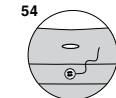
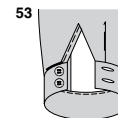
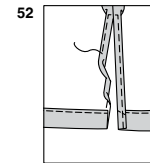
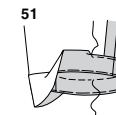
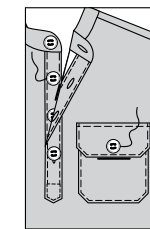
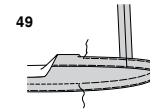
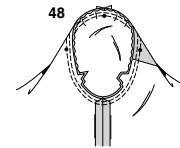
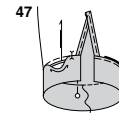
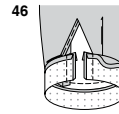
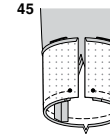
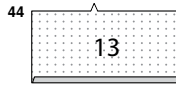
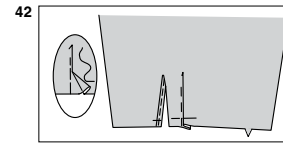
**37. VIEW A- REINFORCE** lower edge of sleeve along stitching line. Slash between stitching to small dot.

**38.** Turn in 1/4" (6mm) seam allowance on one long edge of **CONTINUOUS LAP** (12). Press.

**39.** With **RIGHT** sides together, pin continuous lap to sleeve, placing remaining 1/4" (6mm) seamline along stitching. Stitch.

**40.** Press seam toward continuous lap. Turn pressed edge of continuous lap to **INSIDE** over seam. **EDGE STITCH**. Press.

**41.** Turn front edge of continuous lap to **INSIDE**, as shown. Baste across lower edge. Stitch across upper edge of fold diagonally, as shown.



**42.** To make pleat in sleeve, on **OUTSIDE**, crease along solid lines. Bring creases to broken lines. Baste across lower edge. Press.

**43.** With **RIGHT** sides together, stitch sleeve seam.

**44.** Turn in 1/2" (1.3cm) on unnotched edge of **CUFF** (13) sections.

**45.** Pin cuff to sleeve, matching notches and small dots at opening edges. Stitch.

**46.** Press seam allowances toward cuff, pressing cuff out. Fold cuff to **OUTSIDE**, along foldline. Stitch ends, as shown. **TRIM**.

**47.** Turn cuff to **INSIDE**; press. Pin pressed edge of cuff over seam, placing pins on **OUTSIDE**. On **OUTSIDE**, **STITCH IN THE DITCH** or "groove" of seam, catching in pressed edge on **INSIDE**.

### CONTINUE AS FOLLOWS FOR BOTH VIEWS

**48.** With **RIGHT** sides together, pin sleeve into armhole, placing inner small dot at shoulder seam. Adjust ease; baste. Stitch. Stitch again 1/4" (6mm) away in seam allowance. Trim close to stitching. Press seam allowances flat. Turn seam toward sleeve.

### FINISHING

**49.** Turn up hem. Baste close to fold. Turn in 1/4" (6mm) on raw edge, easing in fullness if necessary. Baste hem in place close to upper edge. Press. **TOPSTITCH** hem along upper basting, as shown.

**50.** Make buttonholes in **LEFT** front placket and collar band at markings. Lap **LEFT** over **RIGHT** front placket. Hand-sew buttons under button holes. Hand sew button to **LEFT** front pocket at marking.

**51. VIEW A-** Turn up sleeve hem. Baste close to fold. Turn in 1/4" (6mm) on raw edge, easing in fullness if necessary. Baste hem in place close to upper edge. Press. **TOPSTITCH** hem along upper basting, as shown.

**52. NARROW HEM** side opening edges, tapering to nothing and squaring stitching above opening.

**53. VIEW B-** Make buttonholes in cuff at markings. Sew buttons to cuff at markings.

**54.** Sew button to back neck band at marking.

### SHORTS C, PANTS D

#### INTERFACING

**1.** Pin **INTERFACING** to wrong side of each matching **FABRIC** section. Fuse, following manufacturer's instructions.

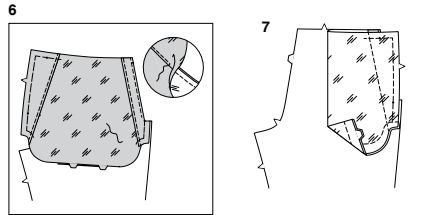
#### FRONT AND BACK

**2.** To make pleats in **FRONT** (15), on **OUTSIDE**, fold along solid lines. Bring folds to broken lines; pin. Baste across raw edge.

**3. FINISH** unmarked edges of **POCKET FACING** (19) and **YOKE FRONT** (20).

**4.** On **OUTSIDE**, pin **WRONG** side of pocket facing and yoke front, to each side of **SIDE FRONT AND POCKET** (18) matching small dots and markings. Stitch close to finished edge of yoke and facing sections. Baste raw edges in place.

**5.** With **RIGHT** sides together and raw edges even, pin yoke and pocket to front, matching small dots. Stitch single notched edge, pivoting at small dot, continuing across seam allowance. **TRIM** seam. Clip to small dot being careful not to clip through stitching.



**6. UNDERSTITCH** pocket as far as possible. Turn pocket to **INSIDE**; press.

**7.** On **INSIDE**, with **RIGHT** sides together, fold yoke and pocket along fold line, having raw edges even. Stitch double notched edge, as shown.

**8.** On **OUTSIDE**, lap pants/shorts front over yoke and pocket section, matching small dots, having raw edges even; pin. Baste side and upper edges together.

**9.** Make **FLAT DARTS** in **BACK** (21) sections. Press darts toward center.

**10. REINFORCE** **RIGHT** back along stitching lines, pivoting with needle in fabric at small dots.

**11.** With **WRONG** sides together, fold **WELT** (22) along foldline. Baste raw edges together. Trim seam allowance on long edge to a scant 1/4" (6mm).

**12.** Pin welt to **RIGHT** back, placing seamlines along lower stitching line. Baste between small dots.

**13. FINISH** long unmarked edge of **BACK POCKET FACING** (24).

**14.** Pin **WRONG** side of pocket facing to right side of **BACK POCKET** (23), placing pressed edge along placement line, having raw edges even. **EDGE****STITCH** pressed edge in place. Baste raw edges together and along stitching line, as shown.

**15.** With right sides together, pin straight end of back pocket to back along lower stitching line, matching symbols. Stitch along stitching line between small dots.

**16.** Slash back along line, clipping diagonally to small dots, being careful not to cut welt.

**17.** Turn pocket and triangular ends to **INSIDE**, pulling ends of welts between triangular ends, as shown. Press.

**18.** With **RIGHT** sides together, fold back pocket along foldline, having edges even at sides. Pin back pocket to back at upper edge of pocket opening, matching stitching lines and symbols. Stitch along stitching line between small dots, keeping back free.

**19.** Stitch pocket edges together; catching welts and triangular ends, keeping back free.

**20.** Pin back pocket to back at upper edge matching small dots; baste raw edges together.

### FLY FRONT AND CROTCH SEAMS

**NOTE:** Use an adjustable zipper foot when stitching zipper. See **ZIPPERS:** "sewing a fly front zipper" video for more assistance.

**21.A-** Stitch front sections together at center front between large dot and notch.

**B-** Turn in **RIGHT** front opening edge along foldline; press.

**C-** Place closed zipper (face up) under **RIGHT** front opening edge, having pressed edge close to zipper teeth and zipper stop at small dot. Using a zipper foot, baste close to pressed edge.

**D-** With right sides together, stitch **RIGHT FLY** (16) sections together along curved edge. Trim. Turn. Press. Baste raw edges.

**E-** On inside, pin **RIGHT** fly to **RIGHT** front opening edge (over zipper), matching notches and small dots, having raw edges even. Baste along previous basting for zipper.

**F-** On outside, using a zipper foot, stitch close to pressed edge of front through all layers.

**G-** **FINISH** outer edge of **LEFT FLY FACING** (17). Pin fly facing to left front opening edge, matching notches and large dots. Stitch, ending at large dot. Trim. **UNDERSTITCH** fly facing. Turn facing to inside.

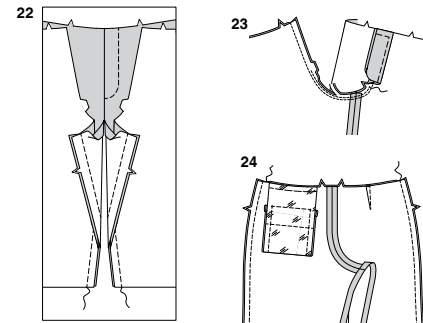
**H-** Lap **LEFT** front over **RIGHT**, matching centers. Baste close to edge through all thicknesses.

**I-** Pin **RIGHT** fly out of the way. Open out fly facing. Pin remaining zipper tape to fly facing, keeping **LEFT** front free. Using a zipper foot, stitch in place close to zipper teeth and along center of zipper tape.

**J-** Turn facing down. On **OUTSIDE**, stitch **LEFT** front along stitching lines, keeping **RIGHT** fly free.

**K-** Turn **RIGHT** fly back in place. On **INSIDE**, hand **TACK** fly and facing together at lower edge, as shown. Trim away excess zipper tape even with lower edge of fly, if needed.

**L-** If desired, on outside, machine-stitch a bar **TACK** across lower end of fly through all thicknesses.



**22.** Stitch front and back together at inner leg edges.

**23.** Stitch remainder of crotch seam to notch in front. Stitch again 1/4" (1cm) away in seam allowance along curve, as shown. Trim close to second stitching.

### SIDE SEAMS

**24.** Stitch back and front together at side seams.

### WAISTBAND

**25.** Fold **CARRIER** (25) in half, lengthwise with **WRONG** sides together. Press.

**26.** Open out long edges of carrier and turn them to **WRONG** side so that they meet at the crease. Press.

**27.** Fold carrier in half lengthwise, bringing pressed edges together. **EDGE****STITCH** close to both long edges.

**TIP:** See Loops and Straps: "how to sew belt loops" video for more assistance.

**28.** Cut five carriers, each measuring 3-1/2" (9cm). Press under 1/2" (1.3cm) on one end of carrier. On **OUTSIDE**, pin carriers to upper edge of pants, centering ends over large dots, having raw edges even. Baste carriers in place.

**29.** **STAY****STITCH** upper edge of pants, between notches.

**30.** With **RIGHT** sides together, stitch center back seam of **RIGHT** **WAISTBAND** (26) and **LEFT** **WAISTBAND** (27) sections. Press under 1/2" (1.3cm) on unmarked edge.

**31.** With **RIGHT** sides together, pin waistband to upper edge of pants placing small dots at side seams, matching center back seam. Stitch. **TRIM.**

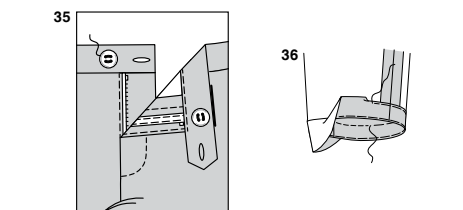
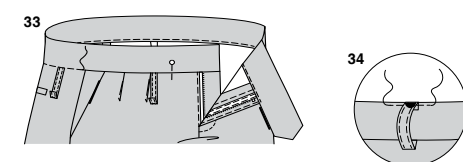
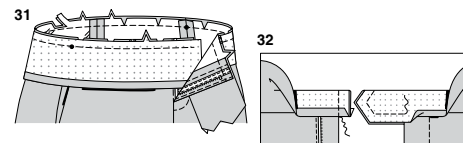
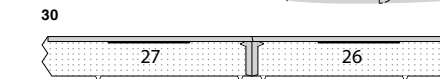
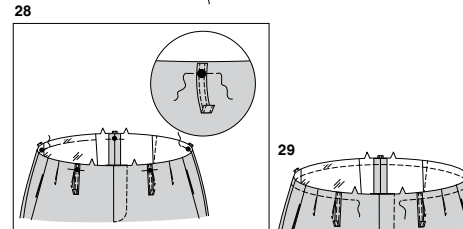
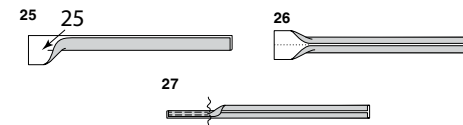
**32.** Press seam up pressing waistband out. Turn ends of waistband to **OUTSIDE**. Open out seam allowance on **LEFT** waistband. Stitch ends as shown.

**33.** Turn waistband to **INSIDE**, pinning pressed edge of waistband over seam, placing pins on **OUTSIDE**. On **OUTSIDE**, **STITCH** **IN THE** **DITCH** or "groove" of seam catching in pressed edge on **INSIDE**.

**34.** Turn carriers up, pinning pressed ends of carriers to waistband, centering over large dots, having edges even. **EDGE****STITCH** pressed edge of carriers in place, through all thicknesses.

**35.** Make buttonhole in **LEFT** front waistband and **RIGHT** front waistband at markings. Sew button to **RIGHT** and **LEFT** front waistband at markings.

**36.** Turn up hem on lower edge of pants/shorts. Baste close to fold. Turn in 1/4" (6mm) on raw edge, easing in fullness if necessary. Baste hem in place close to upper edge. Press. **TOP****STITCH** hem along upper basting, as shown.





# Congrats!

You've completed your sewing adventure

---

## SHARE YOUR LOOK



Post your pattern and tag us using [#simplicitypatterns](#)  
[@simplicity creative group](#)  
[@simplicitymccallsuk](#)  
[@simplicitymccallsaustralia](#)  
for a chance to be featured on our social media.

Look for more PDF patterns at [simplicity.com](#) or for customers outside the U.S. and Canada visit [sewdirect.com](#) and [sewdirect.com.au](#)

Have a question or need help with your sewing project contact us:  
[Simplicity.com](#)    [Sewdirect.com](#)    [Sewdirect.com.au](#)



Simplicity ©2024 a division of IG Design Group Americas Inc. • Atlanta, GA 30342 USA [www.thedesigngroup.com](#) • All Rights Reserved. [www.simplicity.com](#) • Made in the U.S.A. Fabriqué aux États-Unis.

To be used for individual private home use only and not for commercial or manufacturing purposes. • A usage privé seulement et non à des fins commerciales ou de production en série. • Para uso privado solamente, no se puede utilizar con propósitos de comercialización o de producción en serie.