

For customers outside of the U.S. and Canada

sewdirect.com sewdirect.com.au

Shop all the pattern brands you love @
Simplicity®.com

S3075

Simplicity®



A



B



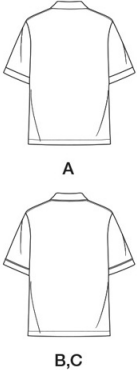
C



 Designed and printed in USA.

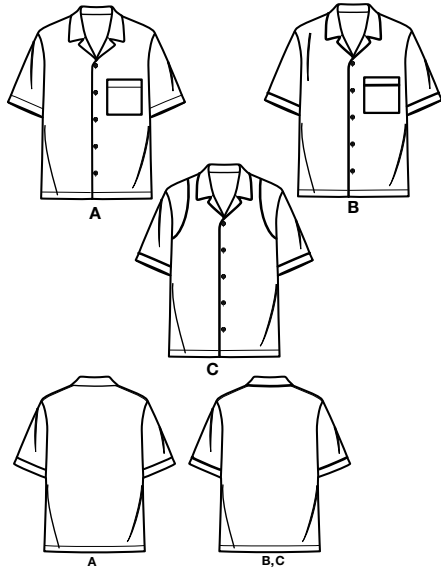
MEN'S SHIRTS							Average
Suggested Fabrics: A,B,C: Challis, Chambray, Cotton Blends, French Terry, Linen Blends, Lyocell, Polyester Blends, Rayon, Shirtings, Terry Cloth. Interfacing: Lightweight Fusible.							
Notions: A,B,C: Five ½" (1.3cm) buttons. Also for B,C: 5 ½ yds. (4.7m) of ¼" (3mm) piping with lip.							
Sizes	S	M	L	XL	XXL		
	(34-36)	(38-40)	(42-44)	(46-48)	(50-52)		
European	44-46	48-50	52-54	56-58	60-62		
BODY MEASUREMENTS: Select pattern size based on body measurements							
Chest	34-36	38-40	42-44	46-48	50-52	Ins.	
Waist	28-30	32-34	36-39	42-44	46-48	"	
Hip	35-37	39-41	43-45	47-49	51-53	"	
Interfacing A,B,C 20" - 1 ½ yds.							
Shirt A,B	45"	2%	2%	2%	2%	3%	Yds.
	60"	1%	1%	2	2 ¼	2 ¼	"
Shirt C	45"	2%	2 ½	2 ¾	2%	3%	Yds.
	60"	1%	1%	2	2 ¼	2 ¼	"
FINISHED GARMENT MEASUREMENTS (Includes Design and Wearing Ease)							
A,B,C Chest	43	47	51	55	59	Ins.	
A,B,C Waist	42 ½	46 ½	50 ½	54 ½	58 ½	"	
Width, lower edge							
Top A,B,C	42 ½	46 ½	50 ½	54 ½	58 ½	Ins.	
Finished back length from base of neck							
Top A,B,C	26 ½	27	27 ½	28	28 ½	Ins.	
*with nap **without nap							

CHEMISES POUR HOMMES							Moins Facile
Tissus Conseillés: A,B,C: Challis, Chambray, Cotonnades, Tissu bouclette, Lin mélangés, Lyocell, Mélanges de polyester, Rayonne, Shirtings, Tissus Éponge.							
Entoilage: Thermocollant léger.							
Mercerie: A,B,C: 5 boutons de 1.3cm. Aussi pour B,C: 4.7m de garniture de passepoil de 3mm pour l'insertion.							
Tailles	P/S	M/M	G/L	TG/XL	TTG/XXL		
Fr/Eur	44-46	48-50	52-54	56-58	60-62		
MESURES DU CORPS: Choisissez la taille du patron basée sur les mesures du corps							
Poitrine	87-92	97-102	107-112	117-122	127-132	cm	
Taille	71-76	81-87	92-99	107-112	117-122	"	
Hanches	89-94	99-104	109-115	119-124	128-135	"	
Entoilage A,B,C 51cm - 0.9m							
Chemise A,B	115cm*	2.2	2.2	2.5	2.5	2.9	m
	150cm*	1.7	1.7	1.7	2.1	2.1	"
Chemise C	115cm*	2.2	2.3	2.5	2.5	2.9	m
	150cm*	1.7	1.7	1.7	2.1	2.1	"
MESURES DES VÊTEMENTS FINI (Motif et aisance de port compris)							
A,B,C Poitrine	109	119	130	140	150	cm	
A,B,C Taille	108	118	128	138	149	"	
Largeur à l'ourlet							
Chemise A,B,C	108	118	128	138	149	cm	
Longueur finie -- dos, votre nuque à l'ourlet							
Chemise A,B,C	67	69	70	71	72	cm	
*avec sens **sans sens							

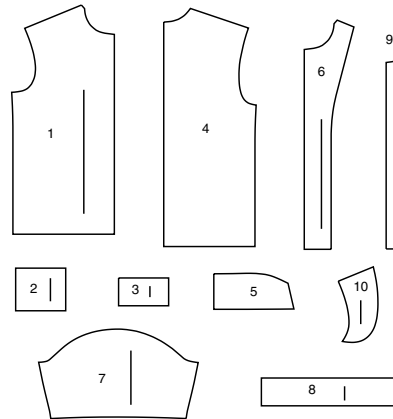


Simplicity®

Thank you for purchasing this Simplicity pattern.
We made every effort to provide you with a high quality product.



10 PIECES



- 1 FRONT - A,B,C
2 POCKET - A,B
3 POCKET BAND - A,B
4 BACK - A,B,C
5 COLLAR - A,B,C
6 FRONT FACING - A,B,C
7 SLEEVE - A,B,C
8 SLEEVE BAND - A,B,C
9 GUIDE FOR BUTTONHOLE - A,B,C
10 YOKE FRONT - C



www.simplicity.com



info@simplicity.com



1-888-588-2700

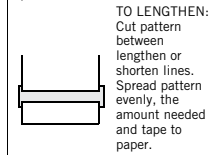
General Directions

The Pattern

- SYMBOLS**
- GRAIN LINE Place on straight grain of fabric parallel to selvage
 - PLACE SOLID LINE on fold of fabric.
 - CENTER FRONT OR BACK OF garment.
 - NOTCHES
 - DOTS
 - CUTTING LINE
 - LENGTHEN OR SHORTEN LINES

SEAM ALLOWANCE: 5/8" (1.5cm) unless otherwise stated is included but not printed on MULTI-SIZE PATTERNS. Mark your size with colored felt tip pen. See chart on tissue for how to use MULTI-SIZE PATTERNS.

ADJUST IF NEEDED
Make adjustments before placing pattern on fabric.



TO LENGTHEN:
Cut pattern between lengthen or shorten lines. Spread pattern evenly, the amount needed and tape to paper.

TO SHORTEN:
At lengthen or shorten lines, make an even pleat taking up amount needed. Tape in place.

When lengthen or shorten lines are not given, make adjustments at lower edge of pattern.

Cutting/Marking

BEFORE CUTTING:

PRESS pattern pieces with a warm dry iron. PRE-SHRINK fabric by pre-washing washables or steam-pressing non-washables.

CIRCLE your cutting layout.

PIN pattern to fabric as shown in Cutting Layouts.

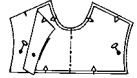
- FOR DOUBLE THICKNESS: Fold fabric with RIGHT sides together.
- FOR SINGLE THICKNESS: Place fabric RIGHT side up.
- FOR PILE, SHADED OR ONE WAY DESIGN FABRICS: Use "with nap" layouts

AFTER CUTTING:

Transfer markings to WRONG side of fabric before removing pattern. Use pin and chalk method or dressmaker's tracing paper and wheel.

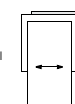
To Quick Mark:

- Snip edge of fabric to mark notches, ends of fold lines and center lines.
- Pin mark dots.

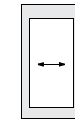


SPECIAL CUTTING NOTES

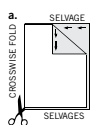
★ If layout shows a piece extending past fold, cut out all pieces except piece that extends.



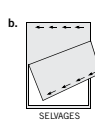
Open out fabric to single thickness. Cut extending piece on RIGHT side of fabric in position shown.



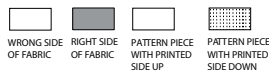
✱ Mark small arrows along both selvages indicating direction of nap or design. Fold fabric crosswise with RIGHT sides together, and cut along fold (a).



Turn one fabric layer around so arrows on both layers go in the same direction. Place RIGHT sides together (b).



Cutting Layouts

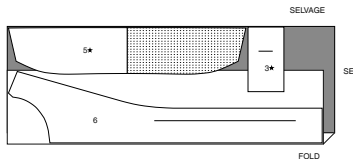


POSITION OF PATTERN PIECES MAY VARY SLIGHTLY ACCORDING TO YOUR PATTERN SIZE

INTERFACING A,B,C

USE PIECES 3 5 6

20" (51CM)
ALL SIZES

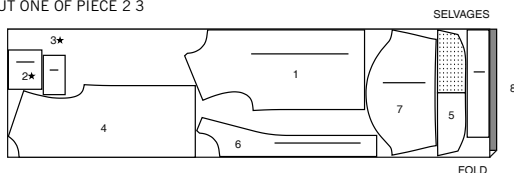


SHIRT A,B

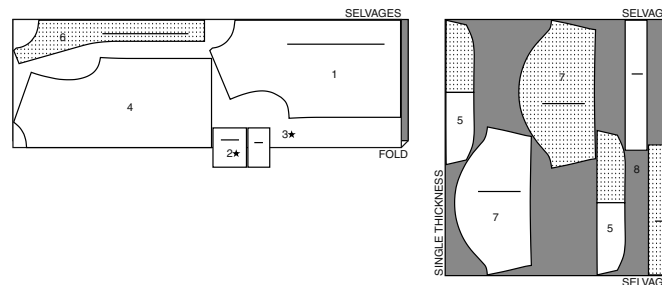
USE PIECES 1 2 3 4 5 6 7 8

45" (115CM) WITH NAP
SIZES S M

CUT ONE OF PIECE 2 3

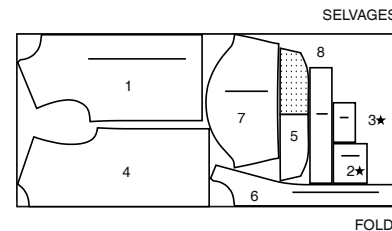


45" (115CM)
WITH NAP
SIZES L XL XXL



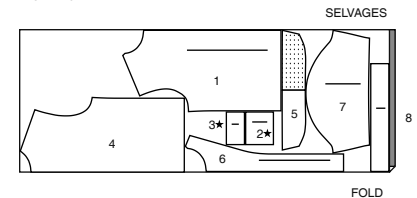
60" (150CM)
WITH NAP
SIZES S M L

CUT ONE OF PIECE 2 3



60" (150CM)
WITH NAP
SIZES XL XXL

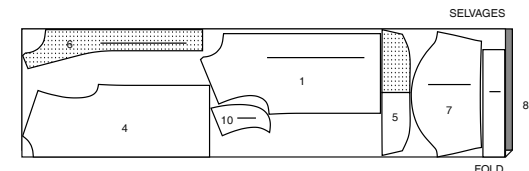
CUT ONE OF PIECE 2 3



SHIRT C

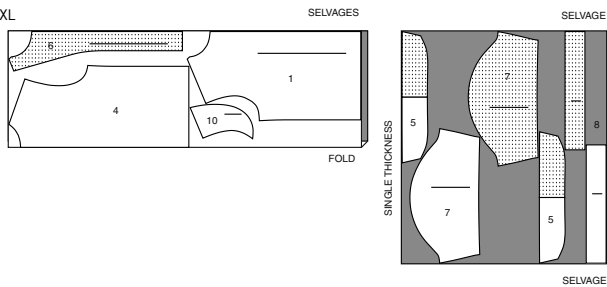
USE PIECES 1 4 5 6 7 8 10

45" (115CM)
WITH NAP
SIZES S M

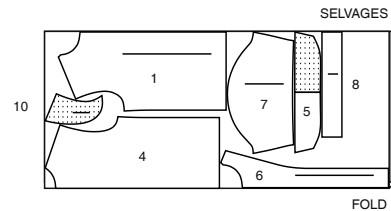


CUTTING LAYOUTS CONTINUED ON PAGE 2

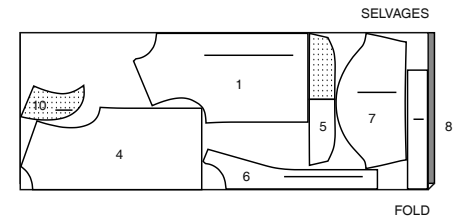
45" (115CM)
WITH NAP
SIZES L XL XXL



60" (150CM)
WITH NAP
SIZES S M L



60" (150CM)
WITH NAP
SIZES XL XXL



Sewing Directions

FABRIC KEY

Read **General Directions** on page 1 before you begin.

Sewing methods in **BOLD TYPE** have Sewing Tutorial Video available. Scan **QR CODE** to watch videos:

EDGE STITCH - See **Machine Stitches: "how to edgestitch"** video.

FINISH - See **Seams: "how to finish seam allowances"** video.

SLIPSTITCH - See **Hand Stitching: "how to slipstitch"** video.

STAYSTITCH - See **Machine Stitches: "how to do stay-stitching"** video.

STITCH IN THE DITCH - see **Machine Stitches: "how to stitch in the ditch"** video.

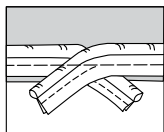
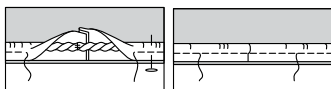
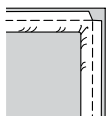
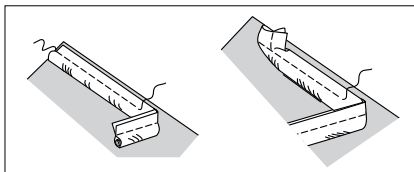
TRIM - see **How to Sew: Trim, Clip, and Layer Seams** video.

SLIPSTITCH - Slide needle through a folded edge, then pick up a thread of underneath fabric.

SEWING TUTORIALS



Build your skills viewing short, easy-to-follow videos at [simplicity.com/sewingtutorials](https://www.simplicity.com/sewingtutorials)



GENERAL DIRECTIONS FOR PIPING PIPING -

Piping has cord encased in bias fabric strips and has a fabric lip edge for stitching into seam allowance of your project as instructed, use a zipper or cording foot when stitching all seams trimmed with corded piping.

To Apply piping, on **OUTSIDE**, pin piping to section edges as instructed in Sewing Directions, having cord extend beyond seam line and flat lip edge within seam allowance. Machine-baste as close to cord as possible without catching in cord.

To taper ends, pin piping in place, as above, tapering end to nothing where seam lines cross. Machine-baste, as above.

TIP FOR FABRIC COVERED CORD - Open out fabric covering and trim cord from where it will cross seam line.

Allow extra fullness when applying piping to a corner. To apply, raise presser foot, and clip flat lip edge up to cording, being careful not to snip cord. Pivot with needle in fabric at corner and continue piping the next edge.

When ends of piping meet, rip open piping stitching at each end.

Turn under one end of strip 3/8" (1cm), as shown. Lap raw end over folded end of fabric. Bring cord ends together, trimming cord, if necessary. Whip-stitch ends of cord together. Stitch strip over cord. Baste remaining piping in place.

For thin cord, lap ends where piping meets, tapering to nothing in seam allowance.

PATTERN PIECES WILL BE IDENTIFIED BY NUMBERS THE FIRST TIME THEY ARE USED.

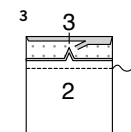
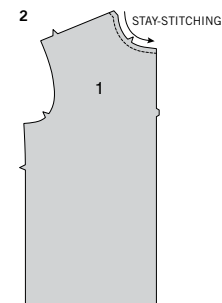
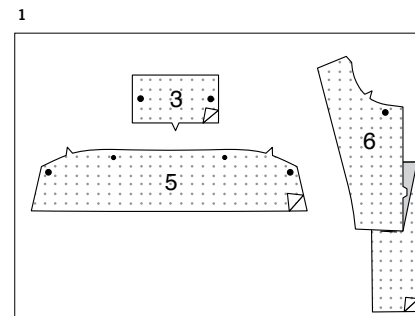
STITCH IN 5/8" (1.5CM) SEAMS WITH RIGHT SIDES TOGETHER UNLESS OTHERWISE STATED.

TOP A, B, C

NOTE: The first view mentioned will be illustrated unless otherwise indicated.

1. Fuse interfacing to wrong side of each matching fabric section, following manufacturer's instructions.

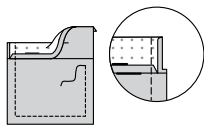
FRONT A



2. STAYSTITCH neck edge of each **FRONT** (1) 1/2" (1.3cm) from cut edge in direction of arrows. This stitching stays in permanently to prevent stretching on curved edges. (Shown only in the first illustration).

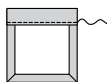
3. With **RIGHT** sides together, stitch **POCKET BAND** (3) to **POCKET** (2) matching notches. **TRIM** seam. Press band out, pressing seam toward band. Press under 5/8" (1.5 cm) on upper unnotched edge; trim to 3/8" (1cm).

4



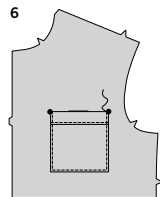
4. Turn band to OUTSIDE along fold line, forming facing. Stitch along seam line on raw edges. Trim seam allowance in the facing area to 1/4" (6mm).

5

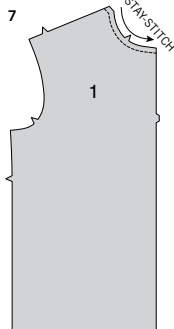


5. Turn corners RIGHT side out, turning facing to WRONG side; press, pressing under raw edges along stitching. **EDGESTITCH** inner edge of band close to seam.

6



7



6. On OUTSIDE, pin pocket to LEFT front, placing corners at large dots. **EDGESTITCH** side and lower edges.

FRONT B

7. **STAYSTITCH** neck edge of each front (1) 1/2" (1.3cm) from cut edge in direction of arrows. This stitching stays in permanently to prevent stretching on curved edges. (Shown only in the first illustration).

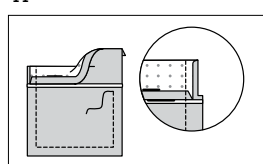
8. On OUTSIDE, pin piping to front and neck edges, finishing at large dot, having cord extend beyond 5/8" (1.5cm) seam line and flat lip edge within seam allowance. Baste. See **GENERAL DIRECTIONS FOR PIPING**.

9. On OUTSIDE, apply piping to notched edge of POCKET (2).

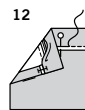
10. With RIGHT sides together, stitch POCKET BAND (3) to pocket (over piping), matching notches. **TRIM** seam. Press band out, pressing seam toward band. Press under 1/2" (1.3 cm) on long unnotched edge of band.

11. Turn band to OUTSIDE along fold line, forming facing. Stitch along seam line on raw edges. Trim seam allowance in the facing area to 1/4" (6mm).

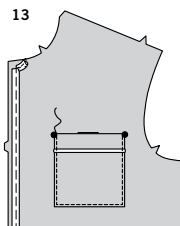
11



12



13



12. Turn corners and piping RIGHT side out; press, pressing under raw edges along stitching. Pin pressed edge of band 1/8" (3mm) over seam, placing pins on OUTSIDE. On OUTSIDE, **STITCH IN THE DITCH** or "groove" of the seam, catching in pressed edge on INSIDE.

13. On OUTSIDE, pin pocket to LEFT front, placing corners at large dots. **EDGESTITCH** side and lower edges.

FRONT C

14. **STAYSTITCH** neck edge of FRONT (1) 1/2" (1.3cm) from cut edge in direction of arrows. This stitching stays in permanently to prevent stretching on curved edges. (Shown only in the first illustration).

15. On OUTSIDE, pin piping to front and neck edges, finishing at large dot, having cord extend beyond 5/8" (1.5cm) seam line, and flat lip edge within seam allowance. Baste. See **GENERAL DIRECTIONS FOR PIPING**.

16. **STAYSTITCH** unmarked curved edge of YOKE FRONT (10) 1/4" (6mm) from cut edge in direction of arrow. **NOTE:** The seam allowance on the unmarked curved edge of yoke is 3/8" (1cm).

17. On OUTSIDE, apply piping to unmarked curved edge of yoke. Baste.

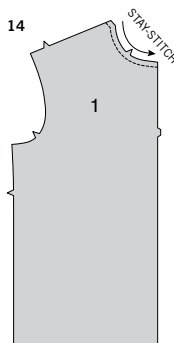
18. Turn piping out, turn seam allowance to INSIDE, clipping curves where necessary. Press.

19. With RIGHT sides facing up towards you, pin yoke to front, having finished edge along placement line and raw edges even. Baste raw edges together. **STITCH IN THE DITCH** or "groove" of piping seam through all thicknesses.

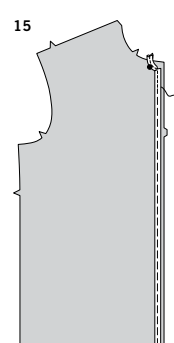
CONTINUE AS FOLLOWS FOR ALL VIEWS

20. **STAYSTITCH** neck edge of BACK (4) in direction of arrows. Stitch back to fronts at shoulders.

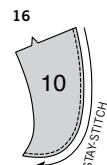
14



15



16



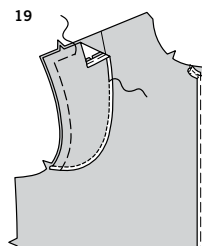
17



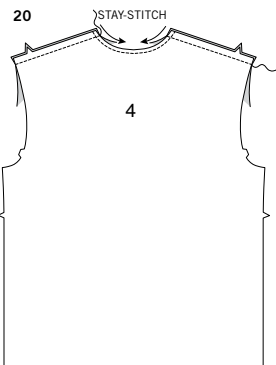
18



19

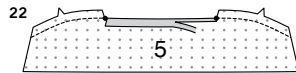


20

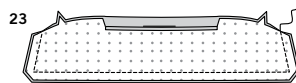




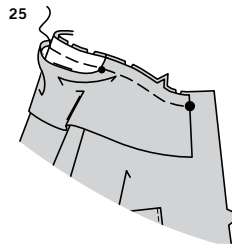
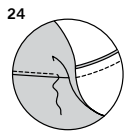
21. FOR COLLAR B, C - On OUTSIDE, apply piping to outer edges of interfaced COLLAR (5).



22. FOR ALL VIEWS - Machine-stitch 5/8" (1.5cm) from notched edge of interfaced COLLAR (5) section. Clip notched edge of collar to stitching at small dots. Press under 5/8" (1.5cm) on raw edge between clips. Trim to 1/4" (6mm).

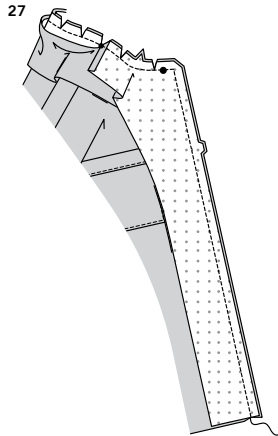
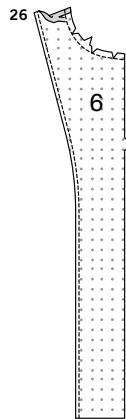


23. With RIGHT sides together, stitch facing to collar, leaving notched edge open. **TRIM** seam and corners.



24. UNDERSTITCH by pressing facing and seam away from collar, stitching through facing and seam allowances close to seam as far as possible.

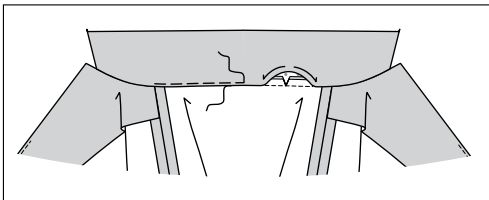
25. Turn collar; press. Clip neck edge of top to staystitching. On OUTSIDE, pin collar (facing side) to neck edge, matching centers and large dots, placing small dot at shoulder seam. Baste both collar and facing sections to front neck edge as far as small dot. Baste only the collar facing section to remaining neck edge between small dots.



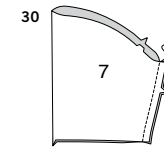
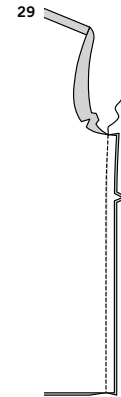
26. Machine-stitch 1/2" (1.3cm) from neck edge of FRONT FACING (6). **FINISH** long unnotched edge. Press under seam allowance on shoulder edge; trim to 3/8" (1cm). Clip neck edge of facing to stitching.

27. With RIGHT sides together and raw edges even, pin facing to front and neck edges of top (over collar), matching large dots. Stitch front and neck edges. Clip neck seam allowances at end of facing. **TRIM** seam and corners; clip curves.

28

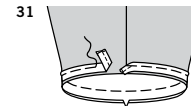


28. UNDERSTITCH front facing from double notch to within 3" (7.5cm) of lower edge. Turn facing to INSIDE, turning out piping for **Views B, C**, and turning back neck seam toward collar for **all Views**. Press. Pin pressed edge of collar over back neck seam; baste. **SLIP-STITCH** pressed edge of collar over seam. On OUTSIDE, stitch back neck of collar as basted.



29. Stitch front to back at side seams.

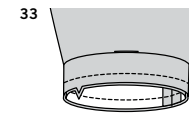
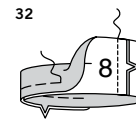
30. Stitch underarm seam of each SLEEVE (7).



31. SLEEVE B, C - On OUTSIDE, apply piping to lower edge of sleeve, having ends meet at seam. Baste.

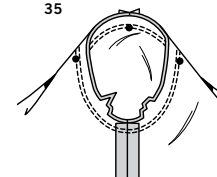
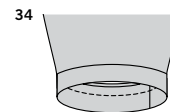
FOR ALL VIEWS

32. Stitch ends of SLEEVE BAND (8). Fold band in half, having raw edges even. Baste raw edges

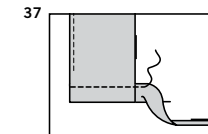
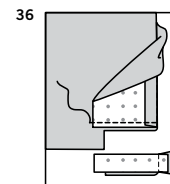


33. With RIGHT sides together and raw edges even, stitch band to lower edge of sleeve. If you prefer, **FINISH** seam allowances.

34. Press band out, pressing seam toward sleeve.



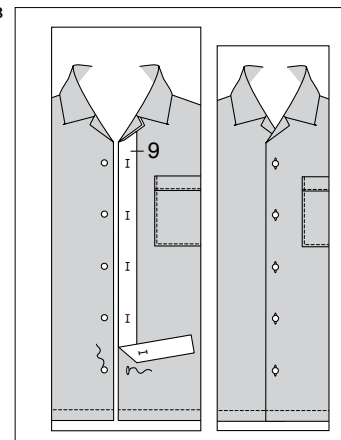
35. With RIGHT sides together, pin sleeve to armhole, placing center small dot at shoulder seam, matching notches and remaining small dots. Stitch. Stitch again 1/8" (3mm) from first stitching. Trim seam below notches close to stitching. Press seam toward sleeve.



36. Turn facing to OUTSIDE. Stitch exactly 1-1/4" (3.2cm) from lower raw edge of facing. Trim facing close to stitching. Trim top to within 5/8" (1.5cm) of inner edge of facing.

37. Turn facing to INSIDE; press, pressing up 1-1/4" (3.2cm) hem. Press under 1/4" (6mm) on raw edge. Stitch hem close to inner pressed edge between opening edges.

38



38. To mark buttonholes in LEFT front place guide along finished edge of garment, matching centers, as shown. Transfer buttonhole markings to garment. Make buttonholes at markings. Lap LEFT front over RIGHT, matching centers. Sew buttons under buttonholes.



Congrats!

You've completed your sewing adventure

SHARE YOUR LOOK



Post your pattern and tag us using [#simplicitypatterns](#)
[@simplicity_creative_group](#)
[@simplicitymccallsuk](#)
[@simplicitymccallsaustralia](#)
for a chance to be featured on our social media.

Look for more PDF patterns at [simplicity.com](#) or for customers outside the U.S. and Canada visit [sewdirect.com](#) and [sewdirect.com.au](#)

Have a question or need help with your sewing project contact us:
[Simplicity.com](#) [Sewdirect.com](#) [Sewdirect.com.au](#)



Simplicity ©2024 a division of IG Design Group Americas Inc. • Atlanta, GA 30342 USA [www.thedesigngroup.com](#) • All Rights Reserved. [www.simplicity.com](#) • Made in the U.S.A. Fabriqué aux États-Unis.

To be used for individual private home use only and not for commercial or manufacturing purposes. • A usage privé seulement et non à des fins commerciales ou de production en série. • Para uso privado solamente, no se puede utilizar con propósitos de comercialización o de producción en serie.