

S3073

Simplicity®



A



B



A,B

Designed and printed in USA.

Average

MISSES' AND WOMEN'S JACKET AND PANTS

Suggested Fabrics: Crepe, Linen Blends, Men's Suiting. **Lining:** Lining Fabric. **Interfacing:** Lightweight Fusible.

Notions: A: Five 3/4" (2cm) buttons (one internal), one pair of 1/2" (1.3cm) shoulder pads to cover, two 6" x 2" (15cm x 5cm) fleece remnants (for sleeve heads). B: One 7" (18cm) zipper (cut to fit), one 3/4" (1.5cm) button.

Sizes	10	12	14	16	18	20W	22W	24W	26W	28W
European	36	38	40	42	44	46	48	50	52	54

BODY MEASUREMENTS: Select pattern size based on body measurements

Bust	32 1/2	34	36	38	40	42	44	46	48	50	Ins.
Waist	25	26 1/2	28	30	32	35	37	39	41 1/2	44	"
Hip-9" below waist	34 1/2	36	38	40	42	44	46	48	50	52	"
Back-neck to waist	16	16 1/4	16 1/2	16 3/4	17	17 1/4	17 1/2	17 3/4	17 1/2	17 3/4	"

Jacket A	45**	2 1/2	2 1/2	2 1/2	2 1/2	2 1/2	3 1/4	3 1/4	3 1/4	3 1/4	3 1/4	Yds.
	60**	2 1/2	2 1/2	2 1/2	2 1/2	2 1/2	2 1/2	2 1/2	2 1/2	2 1/2	2 1/2	"
Lining	45***	1 1/2	1 1/2	1 1/2	1 1/2	1 1/2	2 1/2	2 1/2	2 1/2	2 1/2	2 1/2	"
Interfacing	20"	3 3/4	3 3/4	3 1/2	3 1/2	3 1/2	4	4 1/4	4 1/4	4 1/4	4 1/4	"

Pants B	45**	2 1/2	2 1/2	2 1/2	2 1/2	2 1/2	2 1/2	3	3	3	3 1/2	Yds.
	60**	1 1/2	1 1/2	1 3/4	2 1/2	2 1/2	2 1/2	2 1/2	2 1/2	2 1/2	2 1/2	"
Lining	45***	- 1/2 yd.										
Interfacing	20"	- 3/4 yd.										

FINISHED GARMENT MEASUREMENTS (Includes Design and Wearing Ease)

A Bust	37	38 1/2	40 1/2	42 1/2	44 1/2	46 1/2	48 1/2	50 1/2	52 1/2	54 1/2	Ins.
A Waist	30	31 1/2	33 1/2	35 1/2	37 1/2	40	42	44	46	48	"
B Waist	27 1/2	29	31	33	35	37 1/2	39 1/2	41 1/2	43 1/2	45 1/2	"
B Hip	38	39 1/2	41 1/2	43 1/2	45 1/2	48	50	52	54	56	"
Width, lower edge											
Jacket A	40	41 1/2	43 1/2	45 1/2	47 1/2	49 1/2	51 1/2	53 1/2	55 1/2	57 1/2	Ins.
Width, each leg											
Pants B	24	24 1/2	25	25 1/2	26	28 1/2	29	29 1/2	30	30 1/2	Ins.
Finished back length from base of neck											
Jacket A	25	25 1/4	25 1/2	25 3/4	26	26 3/4	27	27 1/4	27 1/2	27 3/4	Ins.
Finished side length from waist											
Pants B	40	40 1/4	40 1/2	40 3/4	41	40 3/4	41	41 1/4	41 1/2	41 3/4	Ins.

*with nap **without nap

Moins Facile

VESTE ET PANTALON POUR JEUNES FEMMES ET FEMMES

Tissus Conseillés: Crêpe, Lin mélangés, Tissus pour costumes pour hommes. **Doublure:** Tissu à doublure. **Entoilage:** Thermocollant léger.

Mercerie: A: 5 boutons de 2cm (un pour l'intérieur), 1 paire d'épaulettes à recouvrir de 1.3cm, deux morceaux de molleton de 15cm x 5cm pour les soutiens de manche. B: 1 fermeture à glissière de 18cm (coupée pour ajuster), 1 bouton de 1.5cm.

Tailles	10	12	14	16	18	20W	22W	24W	26W	28W
Françaises	38	40	42	44	46	48	50	52	54	56
Européennes	36	38	40	42	44	46	48	50	52	54

MESURES DU CORPS: Choisissez la taille du patron basée sur les mesures du corps

Poitrine	83	87	92	97	102	107	112	117	122	127	cm
Taille	64	67	71	76	81	89	94	99	105	112	"
Hanches (23cm au-dessous de la taille)	88	92	97	102	107	112	117	122	127	132	cm
Dos du cou à la taille	40.5	41.5	42	42.5	43	44	44	44.5	45	45	"

Veste A	115cm*	2.6	2.6	2.6	2.6	2.6	3.0	3.0	3.3	3.4	3.4	m
	150cm*	1.9	1.9	1.9	1.9	2.1	2.3	2.3	2.3	2.4	2.5	"
Doublure	115cm**	1.4	1.4	1.4	1.4	1.5	1.9	1.9	1.9	2.1	2.1	"
Entoilage	51cm	3.1	3.1	3.1	3.2	3.2	3.7	3.7	3.8	3.9	4.0	"

Pantalon B	115cm*	2.2	2.2	2.3	2.3	2.6	2.7	2.7	2.7	2.9	m
	150cm*	1.5	1.5	1.5	1.9	1.9	2.1	2.2	2.3	2.3	"
Doublure	115cm**	- 0.5m									
Entoilage	51cm	- 0.7m									

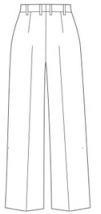
MESURES DES VÊTEMENTS FINI (Motif et aisance de port compris)

A Poitrine	94	98	103	108	113	118	123	128	133	138	cm
A Taille	76	80	85	90	95	102	107	112	117	122	"
B Taille	70	74	79	84	89	95	100	105	110	116	"
B Hanches	97	100	105	110	116	122	127	132	137	142	"
Largeur à l'ourlet											
Veste A	102	105	110	116	121	126	131	136	141	146	cm
Largeur, chaque jambe											
Pantalon B	61	62	64	65	66	72	74	75	76	77	cm
Longueur finie - dos, votre nuque à l'ourlet											
Veste A	64	64	65	65	66	68	69	69	70	70	cm
Longueur finie - côté, taille à l'ourlet											
Pantalon B	102	102	103	104	104	104	104	105	105	106	cm

*avec sens **sans sens



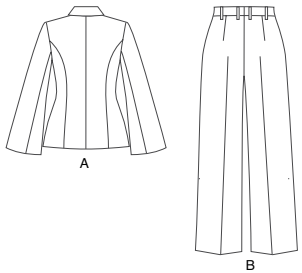
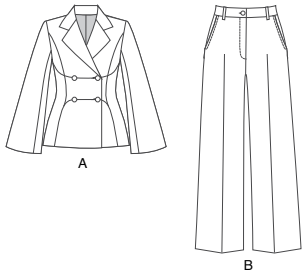
A



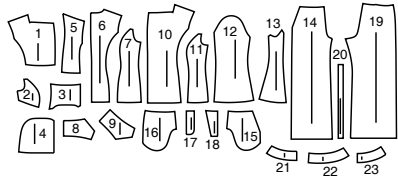
B

Simplicity®

Thank you for purchasing this Simplicity pattern. We made every effort to provide you with a high quality product.



23 PIECES



- 1 Upper Front-A
- 2 Upper Side Front-A
- 3 Middle Front-A
- 4 Lower Front-A
- 5 Lower Side Front-A
- 6 Back-A
- 7 Side Back-A
- 8 Upper Collar-A
- 9 Undercollar-A
- 10 Front Facing-A
- 11 Side Front Lining-A
- 12 Upper Sleeve-A
- 13 Undersleeve-A
- 14 Front-B
- 15 Pocket Facing-B
- 16 Side Front and Pocket-B
- 17 Right Fly Facing-B
- 18 Left Fly-B
- 19 Back-B
- 20 Carriers-B
- 21 Right Front Waistband-B
- 22 Left Front Waistband-B
- 23 Back Waistband-B

General Directions

The Pattern

- SYMBOLS**
- ↔ GRAIN LINE Place on straight grain of fabric parallel to selvage
 - ⇄ PLACE SOLID LINE on fold of fabric.
 - CENTER FRONT OR BACK of garment.
 - ∇ NOTCHES
 - ○ DOTS
 - CUTTING LINE
 - == LENGTHEN OR SHORTEN LINES

SEAM ALLOWANCE: 5/8" (1.5cm) unless otherwise stated is included but not printed on MULTI-SIZE PATTERNS. Mark your size with colored felt tip pen. See chart on tissue for how to use MULTI-SIZE PATTERNS.

ADJUST IF NEEDED

Make adjustments before placing pattern on fabric.

TO LENGTHEN:
Cut pattern between lengthen or shorten lines. Spread pattern evenly, the amount needed and tape to paper.

TO SHORTEN:
At lengthen or shorten lines, make an even pleat taking up amount needed. Tape in place.

When lengthen or shorten lines are not given, make adjustments at lower edge of pattern.

Cutting/Marking

BEFORE CUTTING:
PRESS pattern pieces with a warm dry iron. PRE-SHRINK fabric by pre-washing washables or steam-pressing non-washables.

CIRCLE your cutting layout.

PIN pattern to fabric as shown in Cutting Layouts.

- FOR DOUBLE THICKNESS: Fold fabric with RIGHT sides together.

- FOR SINGLE THICKNESS: Place fabric RIGHT side up.

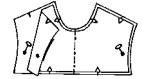
- FOR PILE, SHADED OR ONE WAY DESIGN FABRICS: Use "with nap" layouts

AFTER CUTTING:
Transfer markings to WRONG side of fabric before removing pattern. Use pin and chalk method or dressmaker's tracing paper and wheel.

To Quick Mark:

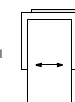
- Snip edge of fabric to mark notches, ends of fold lines and center lines.

- Pin mark dots.

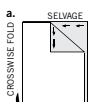


SPECIAL CUTTING NOTES

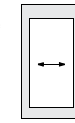
★ If layout shows a piece extending past fold, cut out all pieces except piece that extends.



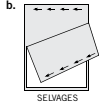
✱ Mark small arrows along both selvages indicating direction of nap or design. Fold fabric crosswise with RIGHT sides together, and cut along fold (a).



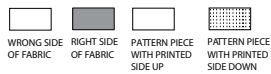
Open out fabric to single thickness. Cut extending piece on RIGHT side of fabric in position shown.



Turn one fabric layer around so arrows on both layers go in the same direction. Place RIGHT sides together (b).



Cutting Layouts



POSITION OF PATTERN PIECES MAY VARY SLIGHTLY ACCORDING TO YOUR PATTERN SIZE

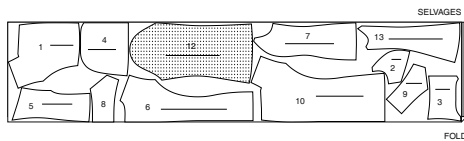
JACKET A

USE PIECES 1 2 3 4 5 6 7 8 9 10 12 13

45" (115CM)

WITH NAP

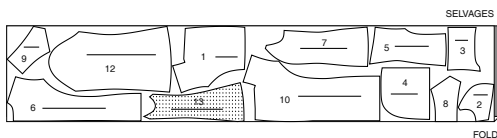
SIZES 10 12 14 16 18



45" (115CM)

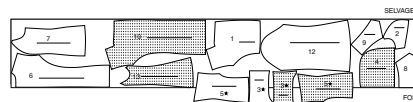
WITH NAP

SIZES 20W 22W



45" (115CM)

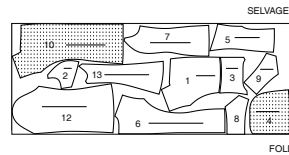
WITH NAP
SIZES 24W 26W 28W



60" (150CM)

WITH NAP

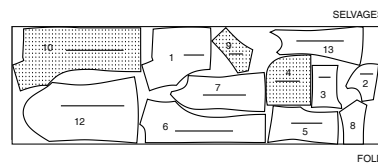
SIZES 10 12 14 16 18



60" (150CM)

WITH NAP

SIZES 20W 22W 24W 26W 28W



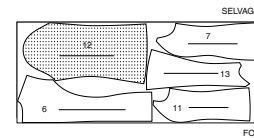
LINING A

USE PIECES 6 7 11 12 13

45" (115CM)

WITHOUT NAP

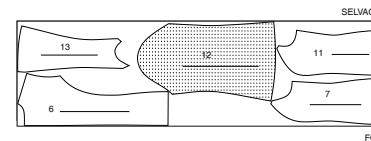
SIZES 10 12 14 16 18



45" (115CM)

WITHOUT NAP

SIZES 20W 22W 24W 26W 28W



INTERFACING A

USE PIECES 1 2 3 4 5 8 9 10

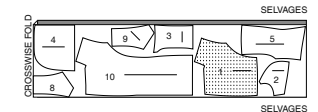
20" (51CM)

SIZES 10 12 14 16 18



20" (51CM)

SIZES 20W 22W 24W 26W 28W



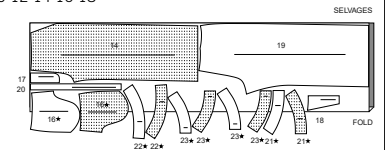
PANTS B

USE PIECES 14 16 17 18 19 20 21 22 23
PIECES 17 AND 20 ARE CUT ONE.

45" (115CM)

WITH NAP

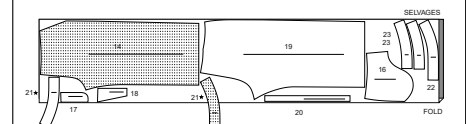
SIZES 10 12 14 16 18



45" (115CM)

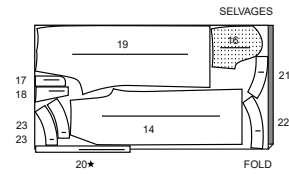
WITH NAP

SIZES 20W 22W 24W 26W 28W

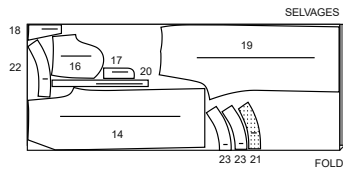


S3073

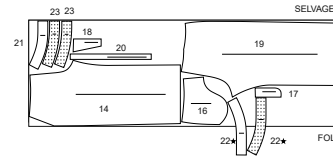
60" (150CM)
WITH NAP
SIZES 10 12 14



60" (150CM)
WITH NAP
SIZES 16 18

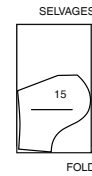


60" (150CM)
WITH NAP
SIZES 20W 22W 24W 26W 28W



LINING B (POCKETS)

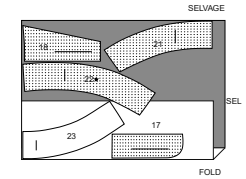
USE PIECE 15
45" (115CM)
WITHOUT NAP
ALL SIZES



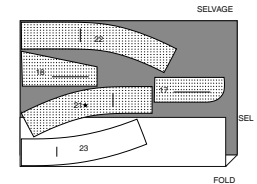
INTERFACING B

USE PIECES 17 18 21 22 23
PIECE 17 IS CUT ONE.

20" (51CM)
SIZES 10 12 14 16 18



20" (51CM)
SIZES 20W 22W 24W 26W 28W



Sewing Directions

FABRIC KEY RIGHT SIDE WRONG SIDE INTERFACING LINING LINING

Sewing methods in **BOLD TYPE** have Sewing Tutorial Video available. Scan QR CODE to watch videos:

CATCH STITCH – See **Hand Stitching**: “hand sewing a catch stitch” video.

EASE – See **Gathering**: “sewing two row gathers” video.

EDGESTITCH – See **Machine Stitches**: “how to sew an edgestitch” video.

FLAT DART – See **Darts**: “sewing flat dart” video.

FLY FRONT ZIPPER – See **Zippers**: “sewing a fly front zipper” video.

SET IN SLEEVE – See **Armholes/Sleeves**: “sewing a set in sleeve” video.

SLIPSTITCH – See **Hand Stitching**: “how to slip stitch” video.

STAYSTITCH – See **Machine Stitches**: “how to do stay stitching” video.

TOPSTITCH – See **Machine Stitches**: “how to topstitch” video.

TRIM SEAM – See **Seams**: “how to trim, clip and layer seams” video.

UNDERSTITCH – See **Machine Stitches**: “how to understitch” video.

PATTERN PIECES WILL BE IDENTIFIED BY NUMBERS THE FIRST TIME THEY ARE USED.

STITCH 5/8" (1.5CM) SEAMS WITH RIGHT SIDES TOGETHER UNLESS OTHERWISE STATED.

SEWING TUTORIALS



Build your skills viewing short, easy-to-follow videos at simplicity.com/sewingtutorials

JACKET A

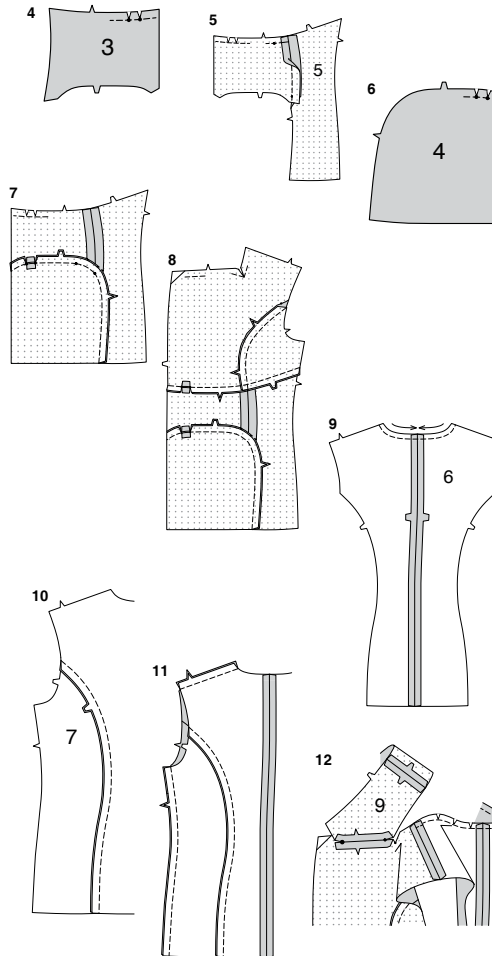
NOTE: Trim 1" (2.5cm) from lower edge of **BACK (6)**, **SIDE BACK (7)**, **UPPER SLEEVE (12)**, and **UNDERSLEEVE (13)** lining sections before stitching seams.

INTERFACING

- Pin interfacing to **WRONG** side of **UPPER FRONT (1)**, **UPPER SIDE FRONT (2)**, **MIDDLE FRONT (3)**, **LOWER FRONT (4)**, **LOWER SIDE FRONT (5)**, **UPPER COLLAR (8)**, **UNDERCOLLAR (9)**, and **FRONT FACING (10)**. Fuse interfacing in place following manufacturer's directions.

FRONT

- To reinforce inner corner of **UPPER FRONT (1)** at small dot, lapel at the large dot, and lower edge at outer small dots, stitch along seamline for about 1" (2.5cm) each side of small and large dots, stitching through dots, as shown. Clip to stitching at the dots. **EASE** side front edge of upper front between the notches.
- With **RIGHT** sides together and raw edges even, pin **UPPER SIDE FRONT (2)** to upper front at side front edges, matching notches, pulling up ease stitches to fit. Stitch. Press seam toward upper front.



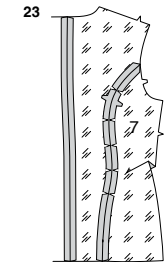
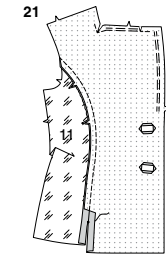
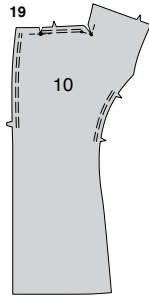
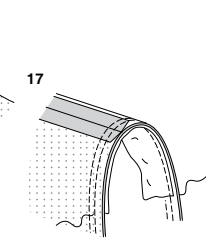
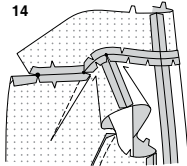
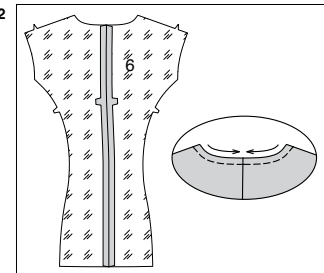
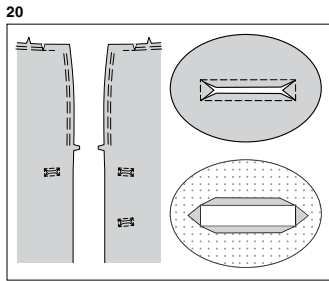
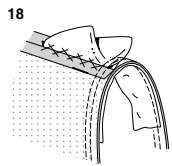
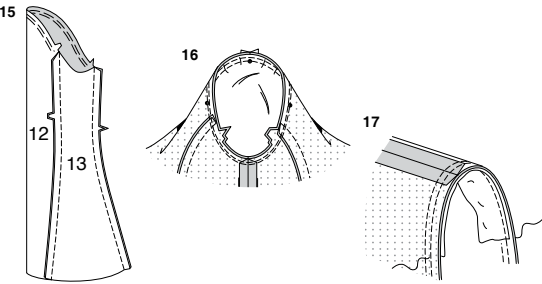
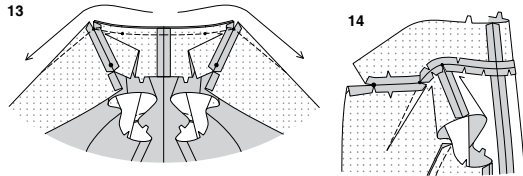
- To reinforce upper edge of **MIDDLE FRONT (3)** at outer small dots, stitch along seamline for about 1" (2.5cm) each side of small dots, stitching through dots, as shown. Clip to stitching at outer small dots.
- With **RIGHT** sides together and raw edges even, pin **LOWER SIDE FRONT (5)** to middle front, matching small dots. Stitch from upper edge to small dot, back stitching at dot to reinforce the seam. Press seam open.
- To reinforce upper edge of **RIGHT LOWER FRONT (4)** at outer small dots, stitch along seamline for about 1" (2.5cm) each side of small dots, stitching through dots, as shown. Clip to stitching at outer small dots.
- With **RIGHT** sides together and raw edges even, pin middle front/lower side front to lower front, matching small dots and notches. Stitch, leaving an opening on **RIGHT** section only between outer small dots for buttonholes, back-stitching at dots to reinforce the seams. Press seam away from lower front. Press seam allowances open between the outer small dots on **RIGHT** sections.
- With **RIGHT** sides together and raw edges even, pin upper front to lower front, matching seams, small dots, and notches. Stitch, leaving an opening between the outer small dots for buttonholes, back-stitching at dots to reinforce the seams. Press seam toward lower front. Press seam allowances open between the outer small dots.

BACK

- Stitch center back edges of **BACK (6)** sections together. To **STAYSTITCH** neck edge, stitch 1/2" (1.3cm) from cut edge in direction of arrows. This stitching stays in permanently to prevent stretching on curved edges. (Shown only in the first illustration.)
- With **RIGHT** sides together and raw edges even, pin **SIDE BACK (7)** to back, matching notches. Stitch. Press seam toward side back, clipping seam allowances if necessary.
- Stitch front to back at side and shoulder edges.

COLLAR

- Stitch center back edges of **UNDERCOLLAR (9)** together. With **RIGHT** sides together, pin front edge of under collar to jacket, matching notches, small and large dots. Stitch between small and large dots. Press seam open. Do Not trim this seam now. For best results, this seam will be trimmed later. Clip back neck edge of jacket to staystitching along curves.



13. To stitch remaining neck edge and make dart in front, on **INSIDE**, with **RIGHT** sides together bring stitching lines together, matching centers back and small dots, placing inner small dot at shoulder seam. Stitch each side from center back to point of dart along stitching lines in direction of arrows.

14. Trim neck seam between darts; clip curves. Press seam open, pressing dart away from center.

SLEEVE

15. **EASE** upper edge of **UPPER SLEEVE** (12) between the notches. With **RIGHT** sides together and raw edges even, pin upper sleeve to **UNDER SLEEVE** (13), matching notches. Stitch.

16. To **SET IN SLEEVE**, hold jacket **WRONG** side out with armhole toward you. With **RIGHT** sides together, pin sleeve to armhole edge with center small dot at shoulder seam, matching large dot to underarm seam, and matching remaining small dots. Pull up ease stitches to fit. To distribute fullness evenly, slide fabric along bobbin threads until there are no puckers or tucks on the seam line. Baste. Stitch. Stitch again 1/8" (3mm) from first stitching. Trim seam below notches close to stitching. Press only the seam allowance, shrinking out fullness.

17. Cut two remnants of polyester fleece 2" (5cm) x 6" (15cm) for sleeve headers. Pin header to armhole on the **INSIDE** of sleeve, placing the center of header at shoulder seam, having raw edges even. Stitch 1/2" (1.3cm) from jacket side (not the sleeve side).

18. Pin shoulder pad to **INSIDE** of jacket with largest layer of pad against the jacket. The shoulder line of the pad should match the shoulder seam of the jacket, and the straight edge of the pad should extend 1/2" (1.3cm) beyond the armhole seam line. Try on jacket to check pad placement. Adjust to fit until jacket looks right and feels comfortable. On **INSIDE**, **CATCH STITCH** each pad to shoulder seam line.

FACING AND LINING

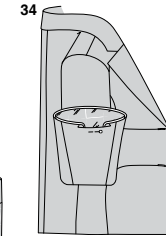
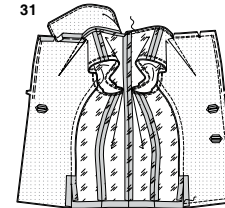
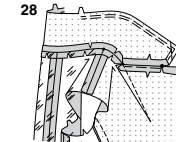
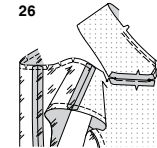
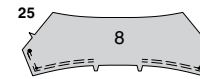
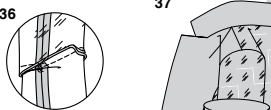
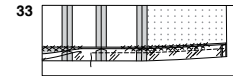
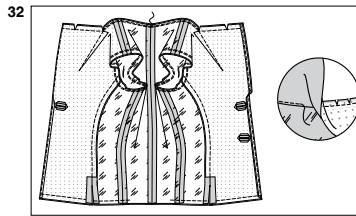
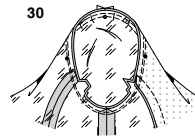
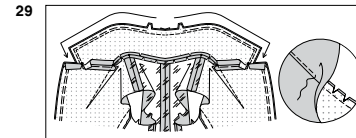
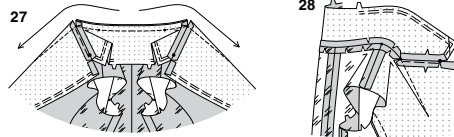
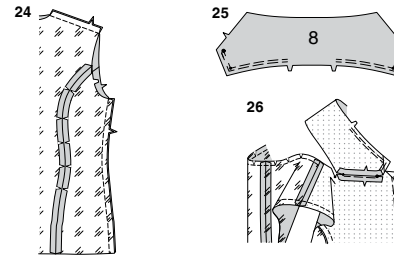
19. To reinforce inner corner of **FRONT FACING** (10) at small dot and lapel at the large dot, stitch along seamline for about 1" (2.5cm) each side of small and large dots, stitching through dots, as shown. Clip stitching at the dots. **EASE** side front edge of upper front between the notches, lapel between the small dot and the notch and between the small and large dots.

20. To make buttonholes at **RIGHT** facing markings, and one upper buttonhole on **LEFT** facing at marking, machine-stitch a scant 1/4" (6mm) rectangle outside buttonhole marking. Carefully slash through center of rectangle and diagonally to corners, as shown. Press under raw edges and corner triangle.

21. With **RIGHT** sides together and raw edges even, pin front facing to **SIDE FRONT LINING** (11), matching notches, pulling up ease stitches to fit. Stitch from armhole edge to small dot, back-stitching at dot to reinforce the seam. Clip facing seam allowance 1" (2.5cm) above small dot. Press seam toward lining above clip.

22. Stitch center back edges of **BACK** (6) lining sections together. To **STAYSTITCH** neck edge, stitch 1/2" (1.3cm) from cut edge in direction of arrows. This stitching stays in permanently to prevent stretching on curved edges. (Shown only in the first illustration.)

23. With **RIGHT** sides together and raw edges even, pin **SIDE BACK** (7) lining to back lining, matching notches. Stitch. Press seam open, clipping seam allowances if necessary.



24. Stitch front facing and lining to back lining at side and shoulder edges.

25. **EASE** double notched edge of **UPPER COLLAR** (8) from the notch to the small dot, and front edge between the large and small dots.

26. With **RIGHT** sides together, pin front edge of upper collar to facing, matching notches, small and large dots. Stitch between small and large dots. Press seam open. Do Not trim this seam now. For best results, this seam will be trimmed later. Clip back neck edge of lining to staystitching along curves.

27. To stitch remaining neck edge and make dart in front facing, on **INSIDE**, with **RIGHT** sides together bring stitching lines together, matching centers back and small dots, placing inner small dot at shoulder seam. Stitch each side from center back to point of dart along stitching lines in direction of arrows.

28. Trim neck seam between darts; clip curves. Press seam open, pressing dart away from center.

29. With **RIGHT** sides together, pin upper collar to undercollar, matching centers, small and large dots. Turn neck seam allowances down. Hand-baste upper edge of upper and undercollar together between large dots, working basting stitches from center back to large dots, easing upper collar to fit. Stitch as basted from center back to large dot, overlapping a few stitches at center back. Anchor thread ends securely at large dots. Trim seam and corners. **UNDERSTITCH** the double notched edge of the undercollar as far as possible.

30. Make sleeve lining and stitch into armhole edge in the same manner as for jacket.

31. Turn collar to **OUTSIDE** between lining and jacket, turning up neck seam allowance. Turn up lapel and lapel facing. Pin front facing to jacket, matching small dots, large dots, and notches. Stitch from large dot to inner small dot on lower edge of facing, easing front facing to fit, being careful not to catch in collar at large dot; back-stitch at ends of stitching to reinforce seam. Trim seams and corners. Stitch seam allowances of facing and lining to jacket together at neck edge between the large dots. Trim seam and corners.

32. **UNDERSTITCH** lower edge of facing, and underside of lapel, as shown. With **RIGHT** sides together, pin lower edges of jacket and lining together, matching centers and seams. Stitch lower edges between side front seams in 1/2" (1.3cm) seam, leaving an opening for turning.

33. With the **WRONG** side of coat facing you, turn up hem on lower edge of coat. Catch-stitch coat hem in place, being careful not to catch in opening edge of lining in back.

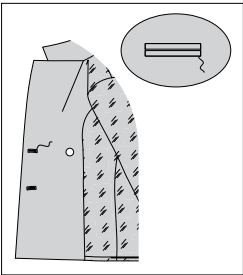
34. Turn jacket **RIGHT** side out through opening in lining; press, pressing collar and lapel. Slip sleeve in place. To match seams correctly, turn sleeve edges of jacket and lining toward each other, as shown. Anchor the turned edges with a pin. (This will enable you to pin the lower edges together more easily when you are ready to stitch the sleeve edges together)

35. Pull sleeve through lower edge of jacket, having **WRONG** sides out, separating the garment sleeve from the lining sleeve. With **RIGHT** sides together, pin sleeve edges together, matching seams. Remove anchoring pin. Stitch sleeve edge. Trim seam.

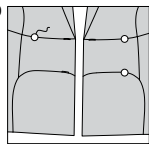
36. Turn up sleeve hem allowance. Tack hem to seam, as shown. If you prefer, **CATCH STITCH** sleeve hem in place.

37. Turn sleeve lining to **INSIDE**; press. Slip hand through opening in lower edges of coat. Tack underarm seams of coat and lining together loosely. Press under 1/2" (1.3cm) on remaining lower edge of lining. **SLIPSTITCH** pressed edge of lining 1" (2.5cm) above lower edge of jacket. Allow jacket and sleeve lining to drop. Press folded edge in place. **SLIPSTITCH** front facing to hem and remaining front edges of lining to facing.

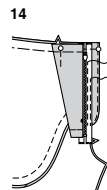
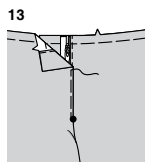
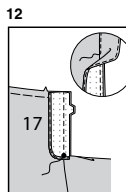
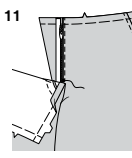
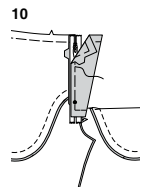
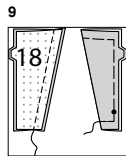
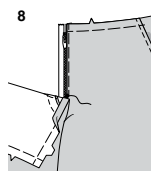
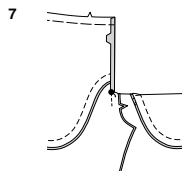
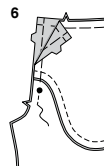
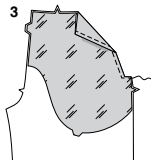
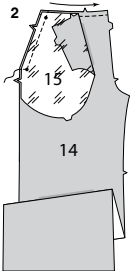
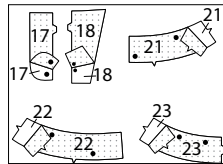
38



39



1



FINISHING

38. On **INSIDE**, **SLIPSTITCH** buttonholes on facing to jacket, invisibly. Sew button to **RIGHT** front facing at small dot.

39. On **OUTSIDE**, sew buttons to **RIGHT** and **LEFT** front at inner small dots.

PANTS B

INTERFACING

1. Pin interfacing to **WRONG** side of **RIGHT FLY FACING** (17), **LEFT FLY** (18), **RIGHT FRONT WAISTBAND** (21), **LEFT FRONT WAISTBAND** (22), and **BACK WAISTBAND** (23). Fuse in place following manufacturer's directions.

FRONT

2. To **STAYSTITCH** upper edge of **FRONT** (14) sections, stitch 1/2" (1.3cm) from cut edge in direction of arrows. This stitching stays in permanently to prevent stretching on curved edges. (Shown only in the first illustration.) Stitch **POCKET FACING** (15) to side edge of front, matching small dots. **TRIM SEAM.**

3. Turn facing to **INSIDE**; press. On **OUTSIDE**, **TOPSTITCH** finished edge.

4. Stitch **SIDE FRONT AND POCKET** (16) to pocket facing along double notched edge, keeping front free.

5. On **OUTSIDE**, lap pants over side front and pocket, matching small dots and having raw edges even. Baste side and upper edges together.

6. Stitch front sections together at center front between the large dot and the notch.

7. Insert **FLY FRONT ZIPPER**, using **RIGHT FLY FACING** (17) and **LEFT FLY** (18) sections. Turn in **LEFT** front opening edge along foldline; press.

8. Place closed zipper face up under **LEFT** front opening edge, having pressed edge close to zipper teeth and zipper stop at small dot. Using a zipper foot, baste close to pressed edge.

9. Pin **LEFT FLY** (18) sections with **RIGHT** sides together. Stitch long unnotched edge. **TRIM SEAM.** Turn left fly; press. Baste raw edges together.

10. On **INSIDE**, pin left fly to **LEFT** front opening edge (over zipper), matching notches and small dots, having raw edges even. Baste along previous basting for zipper.

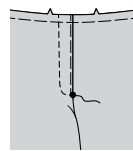
11. On **OUTSIDE**, using a zipper foot, stitch close to pressed edge of front through all layers.

12. To finish outer edge of **RIGHT FLY FACING** (17), stitch 1/8" (3mm) from raw edge. Pin fly facing to **RIGHT** front opening edge, matching notches and large dots. Stitch, ending at large dot. **TRIM SEAM. UNDERSTITCH** fly facing. Turn facing to **INSIDE**.

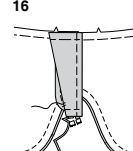
13. Lap **RIGHT** front over **LEFT**, matching centers. Baste close to edge through all thicknesses.

14. Pin left fly out of the way. Open out fly facing. Pin remaining zipper tape to fly facing, keeping **RIGHT** front free. Using a zipper foot, stitch in place close to zipper teeth and along center of zipper tape.

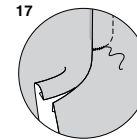
15



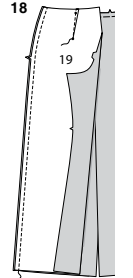
16



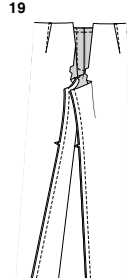
17



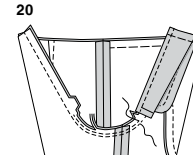
18



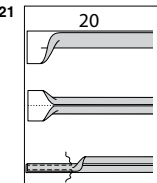
19



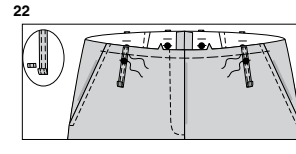
20



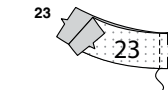
21



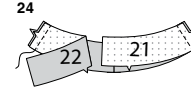
22



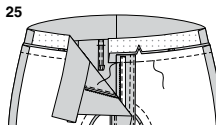
23



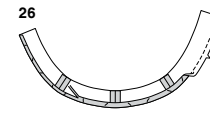
24



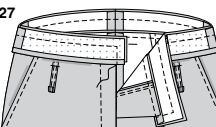
25



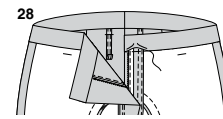
26



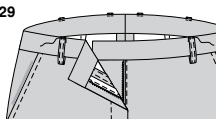
27



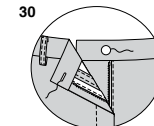
28



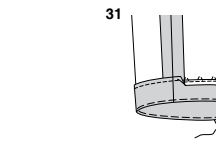
29



30



31



15. Turn facing down. On **OUTSIDE**, stitch **RIGHT** front along stitching lines, keeping left fly free.

16. Turn left fly back in place. On **INSIDE**, hand tack fly and facing together at lower edge, as shown. Trim away excess zipper tape even with lower edge of fly, if needed.

17. If desired, on **OUTSIDE**, machine-stitch a bar tack across lower end of fly through all thicknesses.

18. To make **FLAT DART** in **BACK** (19), with **RIGHT** sides together, fold the fabric through the center of the dart, bringing broken lines and small dots together. On **INSIDE**, place pins at **RIGHT** angles to the broken lines. Stitch the dart from wide end to point. Press the dart flat along the stitching to "blend" the stitches, then press dart toward center. Stitch front to back at side edges.

19. Stitch front to back at inner leg edges, stretching back to fit between notch and upper edge.

20. To stitch center seam, turn one pant leg **RIGHT** side out; slip **INSIDE** remaining pant leg. Stitch remainder of center seam to notch in front. Stitch again along curve 1/4" (6mm) from first stitching within the seam allowance. Trim close to second stitching.

21. Fold **CARRIERS** (20) in half, lengthwise, with **WRONG** sides together; press, setting in a crease. Open out long edges and turn them to **WRONG** side so that they meet at the crease; press. Fold carrier in half, lengthwise, bringing pressed edges together. **EDGE-STITCH** long edges.

22. Cut carriers into six sections, each 3-3/4" (9.5cm) long (extra length has been allowed). Press under 5/8" (1.5cm) on one end of each carrier; trim to 3/8" (1cm). Pin raw ends of carriers to pants, centering over large dots and having raw edges even, as shown. Baste upper edges. Stitch across large dots.

23. Stitch **BACK WAISTBAND** (23) sections together at center back, matching notches.

24. Stitch **RIGHT FRONT WAISTBAND** (21) and **LEFT FRONT WAISTBAND** (22) sections to back waistband at side edges.

25. Pin waistband to pants, matching centers and center fronts. **Note:** Ends of waistband will extend. Stitch. **TRIM SEAM.** Press waistband out, pressing seam toward waistband.

26. Stitch remaining waistband sections together in the same manner as waistband. Machine-stitch 5/8" (1.5cm) from notched edge. Turn under raw edge along stitching; press, easing in fullness. Trim seam allowance to 3/8" (1cm).

27. With **RIGHT** sides together and raw edges even, pin facing to waistband matching seams. Stitch opening and upper edges. **TRIM SEAM.**

28. Turn facing to **INSIDE**; press. **SLIPSTITCH** pressed edge over seam.

29. Turn carriers up, centering pressed ends over large dots on waistband. Stitch close to pressed ends.

30. Make buttonhole in **RIGHT** front waistband at marking. Sew button to **LEFT** front waistband at small dot.

31. Turn up hem at lower edge of pants. Baste close to fold. To finish raw edge, stitch 1/4" (6mm) from edge, turn under along stitching and stitch **OR** zigzag over the edge **OR** overlock over the edge. Sew hem in place, easing in fullness if necessary. Press. To form creases, on **OUTSIDE**, bring leg seams together. Press, pressing in folds, as shown on envelope.



Congrats!

You've completed your sewing adventure

SHARE YOUR LOOK



Post your pattern and tag us using [#simplicitypatterns](#)
[@simplicity creative group](#)
[@simplicitymccallsuk](#)
[@simplicitymccallsaustralia](#)
for a chance to be featured on our social media.

Look for more PDF patterns at [simplicity.com](#) or for customers outside the U.S. and Canada visit [sewdirect.com](#) and [sewdirect.com.au](#)

Have a question or need help with your sewing project contact us:
[Simplicity.com](#) [Sewdirect.com](#) [Sewdirect.com.au](#)



Simplicity ©2024 a division of IG Design Group Americas Inc. • Atlanta, GA 30342 USA [www.thedesigngroup.com](#) • All Rights Reserved. [www.simplicity.com](#) • Made in the U.S.A. Fabriqué aux États-Unis.

To be used for individual private home use only and not for commercial or manufacturing purposes. • A usage privé seulement et non à des fins commerciales ou de production en série. • Para uso privado solamente, no se puede utilizar con propósitos de comercialización o de producción en serie.