

S3072

Simplicity®

 Designed and printed in USA.

							Average	
MISSES' JACKETS								
Suggested Fabrics: Boiled Wool, Fleece, Ponte Knit, Wool Blends. Lining: Lining Fabric. Interfacing: Lightweight Fusible.								
Notions: A,B: Six ¾" (2.2cm) buttons.								
Sizes	XS	S	M	L	XL	XXL		
	4-6	8-10	12-14	16-18	20-22	24-26		
European	30-32	34-36	38-40	42-44	46-48	50-52		
BODY MEASUREMENTS: Select pattern size based on body measurements								
Bust	29½-30½	31½-32½	34-36	38-40	42-44	46-48	Ins.	
Waist	22-23	24-25	26½-28	30-32	34-37	39-41½	"	
Hip-9" below waist	31½-32½	33½-34½	36-38	40-42	44-46	48-50	"	
Back-neck to waist	15¼-15½	15¾-16	16¼-16½	16¾-17	17¼-17½	17¾-18	"	
Lining A,B	45***	1	1¼	1½	1¾	1¾	Yds.	
Interfacing A,B - 20" - 1½ yds.								
Jacket A	45**	3¼	3¼	3¼	3¼	4	4%	Yds.
	60**	2¼	2¼	2¼	2¼	2¾	3%	"
Jacket B	45**	3	3	3	3¼	3¾	4¼	Yds.
	60**	2¾	2¾	2¾	2¾	2¾	2¾	"
FINISHED GARMENT MEASUREMENTS (Includes Design and Wearing Ease)								
A,B Bust	43½	45½	49	53	57	61	Ins.	
A,B Waist	43½	45½	49	53	57	61	"	
A,B Hip	43½	45½	49	53	57	61	"	
Width, lower edge								
Jacket A,B	43½	45½	49	53	57	61	Ins.	
Finished back length from base of neck								
Jacket A,B	28½	29	29½	30	30½	31	Ins.	
*with nap    **without nap								

\*with nap    \*\*without nap

Moins Facile

VESTES POUR JEUNES FEMMES

Tissus Conseillés: Laine bouillie, Molleton, Tricot ponte, Lainages. Doublure: Tissu à doublure. Entoilage: Thermocollant léger.

Mercerie: A,B: 6 boutons de 2.2cm.

Tailles	TP/XS	P/S	M/M	G/L	TG/XL	TTG/XXL	
Françaises	32-34	36-38	40-42	44-46	48-50	52-54	
Européen	30-32	34-36	38-40	42-44	46-48	50-52	

MESURES DU CORPS: Choisissez la taille du patron basée sur les mesures du corps

Poitrine	75-77	80-83	87-92	97-102	107-112	117-122	cm
Taille	56-58	61-64	67-71	76-81	87-94	99-105	"
Hanches (23cm au-dessous de la taille)	80-83	85-88	92-97	102-107	112-117	122-127	cm
Dos du cou à la taille	39-39.5	40-40.5	41.5-42	42.5-43	44-44.5	45-45.5	"
Doublure A,B	115cm**	0.9	1.1	1.4	1.6	1.7	m
Entoilage A,B	51cm - 1.7m						
Veste A	115cm*	2.7	2.9	2.9	3.5	3.5	m
	150cm*	2.1	2.1	2.2	2.6	2.6	"
Veste B	115cm*	2.7	2.7	2.7	3.3	3.4	cm
	150cm*	2.2	2.2	2.2	2.2	2.5	"

MESURES DES VÊTEMENTS FINI (Motif et aisance de port compris)

A,B Poitrine	110	116	124	135	145	155	cm
A,B Taille	110	116	124	135	145	155	"
A,B Hanches	110	116	124	135	145	155	"
Largeur à l'ourlet							
Veste A,B	110	116	124	135	145	155	cm
Longueur finie – dos, votre nuque à l'ourlet							
Veste A,B	72	74	75	76	77	79	cm

\*avec sens    \*\*sans sens

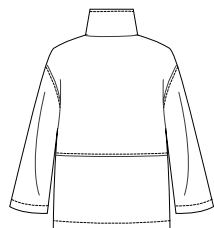
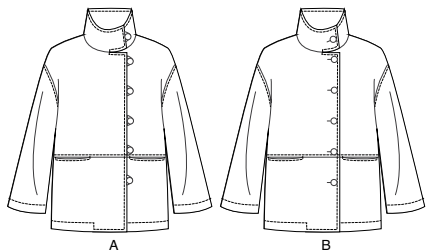
\*avec sens    \*\*sans sens



A,B

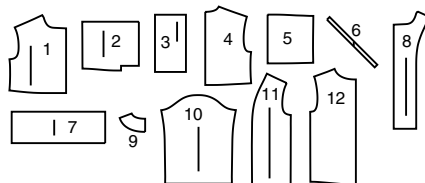
# Simplicity®

Thank you for purchasing this Simplicity pattern.  
We made every effort to provide you with a high quality product.



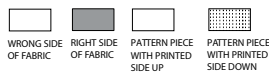
A, B

12 PIECES



- 1 Upper Front-A,B
- 2 Lower Front-A,B
- 3 Pocket-A,B
- 4 Upper Back-A,B
- 5 Lower Back-A,B
- 6 Loop-A
- 7 Collar-A,B
- 8 Front Facing-A,B
- 9 Back Facing-A,B
- 10 Sleeve-A,B
- 11 Front Lining-A,B
- 12 Back Lining-A,B

## Cutting Layouts

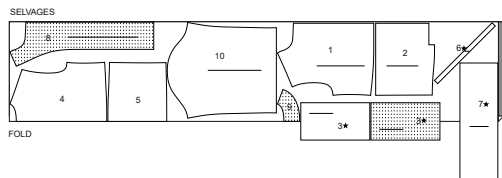


POSITION OF PATTERN PIECES MAY VARY  
SLIGHTLY ACCORDING TO YOUR PATTERN SIZE

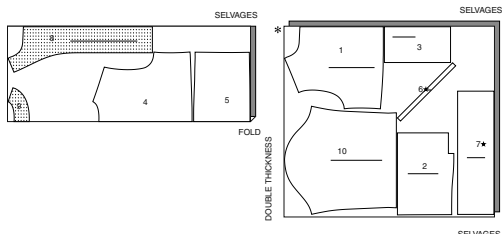
### JACKET A

USE PIECES 1 2 3 4 5 6 7 8 9 10

45" (115CM)  
WITH NAP  
SIZES XS S M



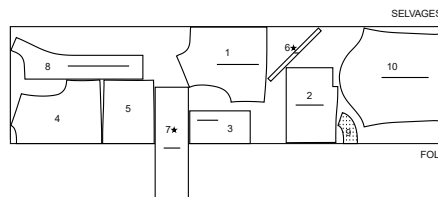
45" (115CM)  
WITH NAP  
SIZES L XL XXL



60" (150CM)  
WITH NAP  
SIZES XS S M



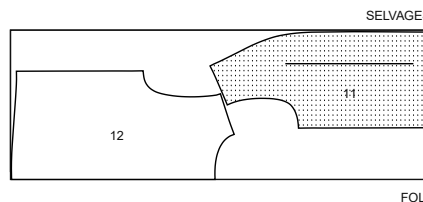
60" (150CM)  
WITH NAP  
SIZES L XL XXL



### LINING A,B

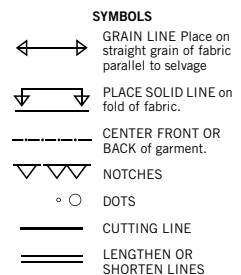
USE PIECES 11 12

45" (115CM)  
WITHOUT NAP  
ALL SIZES



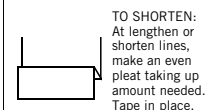
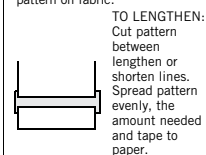
## General Directions

### The Pattern



SEAM ALLOWANCE: 5/8" (1.5cm) unless otherwise stated is included but not printed on MULTI-SIZE PATTERNS. Mark your size with colored felt tip pen. See chart on tissue for how to use MULTI-SIZE PATTERNS.

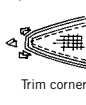
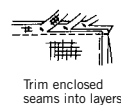
**ADJUST IF NEEDED**  
Make adjustments before placing pattern on fabric.



When lengthen or shorten lines are not given, make adjustments at lower edge of pattern.

### Sewing

- SEW garment following **Sewing Directions**.
- PIN or machine-baste seams matching notches.
- STITCH 5/8" (1.5 cm) seams unless otherwise stated.
- PRESS seams open unless otherwise indicated clipping when necessary so seams will lie flat.
- TRIM seams to reduce bulk, as shown below.



### Cutting/Marking

#### BEFORE CUTTING:

PRESS pattern pieces with a warm dry iron. PRE-SHRINK fabric by pre-washing washables or steam-pressing non-washables.

CIRCLE your cutting layout.

PIN pattern to fabric as shown in Cutting Layouts.

• FOR DOUBLE THICKNESS: Fold fabric with RIGHT sides together.

• FOR SINGLE THICKNESS: Place fabric RIGHT side up.

• FOR PILE, SHADED OR ONE WAY DESIGN FABRICS: Use "with nap" layouts

#### AFTER CUTTING:

Transfer markings to WRONG side of fabric before removing pattern. Use pin and chalk method or dressmaker's tracing paper and wheel.

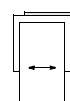
#### To Quick Mark:

- Snip edge of fabric to mark notches, ends of fold lines and center lines.
- Pin mark dots.

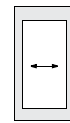


### SPECIAL CUTTING NOTES

★ If layout shows a piece extending past fold, cut out all pieces except piece that extends.



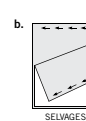
Open out fabric to single thickness. Cut extending piece on RIGHT side of fabric in position shown.



✱ Mark small arrows along both selvages indicating direction of nap or design. Fold fabric crosswise with RIGHT sides together, and cut along fold (a).



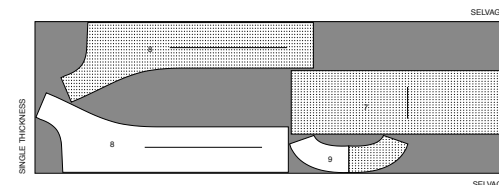
Turn one fabric layer around so arrows on both layers go in the same direction. Place RIGHT sides together (b).



### INTERFACING A,B

USE PIECES 7 8 9

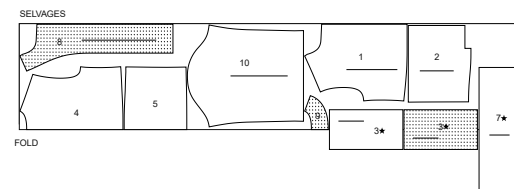
20" (54CM)  
ALL SIZES



### JACKET B

USE PIECES 1 2 3 4 5 7 8 9 10

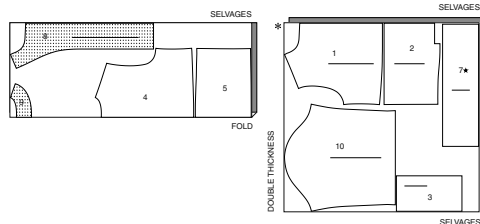
45" (115CM)  
WITH NAP  
SIZES XS S M



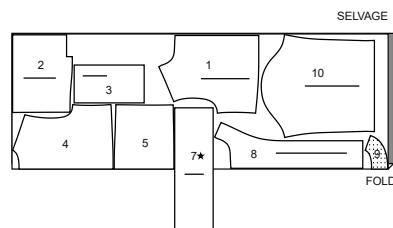
## S3072

2 of 4

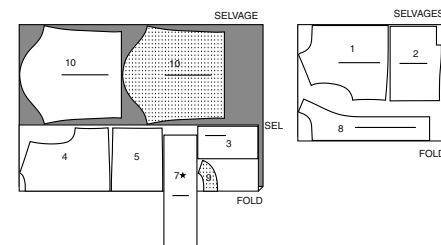
45" (115CM)  
WITH NAP  
SIZES L XL XXL



60" (150CM)  
WITH NAP  
SIZES XS S M L



60" (150CM)  
WITH NAP  
SIZES XL XXL



## SEWING TUTORIALS



Build your skills viewing short, easy-to-follow videos at  
[simplicity.com/sewingtutorials](http://simplicity.com/sewingtutorials)

## Sewing Directions

## FABRIC KEY

RIGHT SIDE WRONG SIDE INTERFACING LINING LINING

Read General Directions on page 1 before you begin.

Sewing methods in **BOLD** TYPE have Sewing Tutorial Video available.  
Scan QR CODE to watch videos:

**CATCH STITCH** – See *Hand Stitching: "hand sewing a catch stitch"* video.

**EDGESTITCH** – See *Machine Stitches: "how to edgestitch"* video.

**REINFORCE** – See *Machine Stitches: "how to reinforce seams"* video.

**SLIPSTITCH** – See *Hand Stitching: "how to slip stitch"* video.

**STAYSTITCH** – See *Machine Stitches: "how to do stay stitching"* video.

**TACK** – See *Hand Stitching: "how to tack"* video.

**TOPSTITCH** – See *Machine Stitches: "how to topstitch"* video.

**TRIM SEAM** – See *Seams: "how to trim, clip and layer seams"* video.

**UNDERSTITCH** – See *Machine Stitches: "how to understitch"* video.

**PATTERN PIECES WILL BE IDENTIFIED BY NUMBERS THE FIRST TIME THEY ARE USED.**

**STITCH SEAMS WITH RIGHT SIDES TOGETHER IN 5/8" (1.5CM) SEAM ALLOWANCE UNLESS OTHERWISE STATED.**

## JACKET A, B

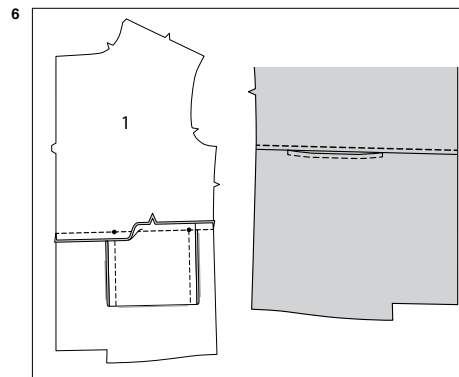
**NOTE:** Under each sub-heading, View A will be shown unless otherwise indicated

## INTERFACING

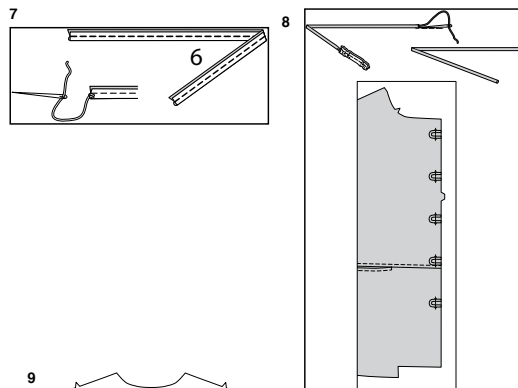
1. Pin **INTERFACING** to wrong side of each matching **FABRIC** section. Fuse, following manufacturer's instructions. Trim corners of interfacing, as shown.

## FRONT AND BACK

2. **REINFORCE** upper edge of **LOWER FRONT** (2) sections at large dots by stitching along seamline through small dots. Clip to small dots being careful not to clip through stitching.
3. With **RIGHT** sides together, pin **POCKET** (3) to each lower front section, matching large dots. Stich pocket in place between large dots.
4. Turn pocket to **INSIDE** between clips. Press. On **OUTSIDE**, **TOPSTITCH** finished edge of pocket continuing across finished edge, as shown.
5. On **INSIDE**, fold pocket in half along fold line, bringing free end of pocket up. Stitch side edges of pocket, breaking stitching at large dot. Baste upper edges in place.

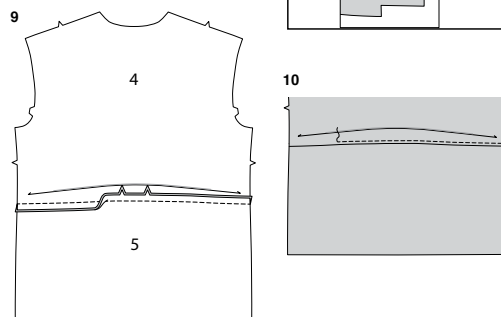


6. With **RIGHT** sides together, pin **UPPER FRONT** (1) to lower front matching notches and large dots. Stitch, keeping finished edge of pocket opening free. Press seam up.  
On **OUTSIDE**, **TOPSTITCH** upper front catching in pressed seam allowance on **INSIDE**.



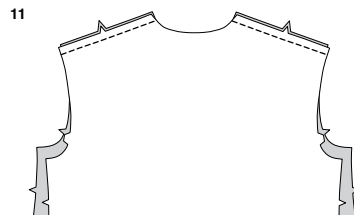
7. **VIEW A**- Fold **LOOP** (6) in half, lengthwise, with **RIGHT** sides together. Stitch a scant 1/4" (6mm) from fold edge, stretching loop while stitching.  
With a needle, attach a strong thread to one end of loop.

8. Draw needle eye forward, through fold, turning loop **RIGHT** side out. Cut six loops each measuring 3" (7.5 cm) long.  
On **OUTSIDE**, pin loops to **RIGHT** front, between small dots, having raw edges even, as shown. Baste.  
**NOTE:** Remaining loop will be use for collar.

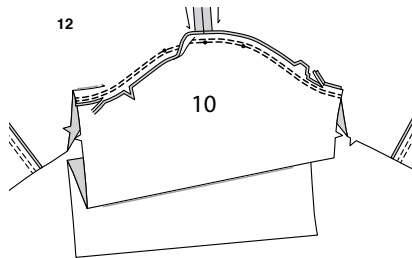


9. **VIEW A, B**- With **RIGHT** sides together, pin **UPPER BACK** (4) to **LOWER BACK** (5) matching notches. Stitch. Press seam up.

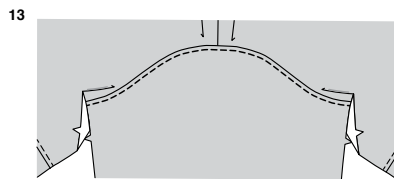
10. On **OUTSIDE**, **TOPSTITCH** upper back, catching in pressed seam on **INSIDE**.



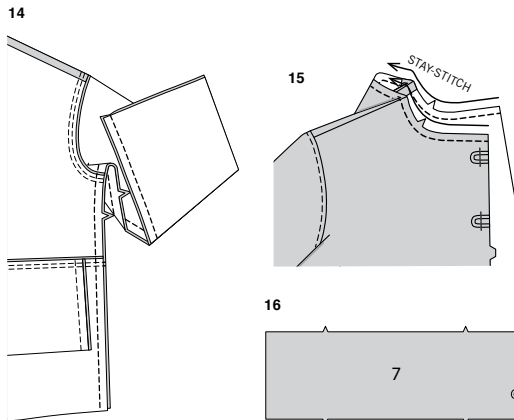
**11.** Stitch front to back at shoulder seams.



**12.** With RIGHT sides together, pin SLEEVE (10) to armhole edge with center small dot at shoulder seam, matching notches and remaining small dots. Stitch. Stitch again 1/8" (3mm) from first stitching. Trim seam below notches close to stitching. Press seam toward sleeve.



**13.** On OUTSIDE, TOPSTITCH sleeve, catching in pressed seam on INSIDE.



**14.** With RIGHT sides together, stitch front to back at entire underarm seam, matching armhole seams. Stitch again over first stitching, at underarm to reinforce.

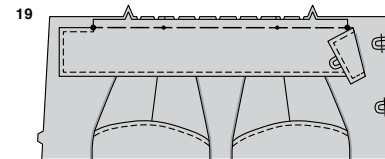
### COLLAR

**15.** STAYSTITCH neck edge of jacket in direction of arrows.

**16.** VIEW A- Pin remaining loop to interfaced COLLAR (7), in same manner as front. Baste.

**17.** VIEW A, B- Fold COLLAR (7) in half lengthwise, with RIGHT sides together. Stitch side edges of collar, between large dots, pivoting with needle in fabric at large dot, continuing across to seam allowance, as shown. Clip to large dot, being careful not to clip through stitching.

**18.** Turn collar RIGHT side out, press. Baste raw edges together. TOPSTITCH outer edges of collar squaring stitching at large dot.



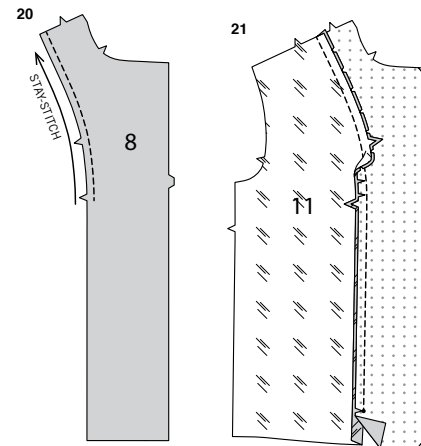
**19.** On OUTSIDE, pin collar to neck edge of jacket, matching large dots and notches, placing small dots at shoulder seams. Baste.

### LINING

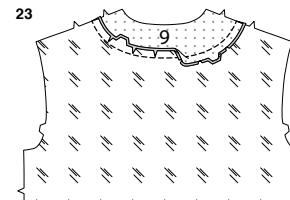
**NOTE:** Trim away 1" (2.5cm) from lower edge of sleeve lining.

**20.** STAYSTITCH side edge of FRONT FACING (8) in direction of arrows.

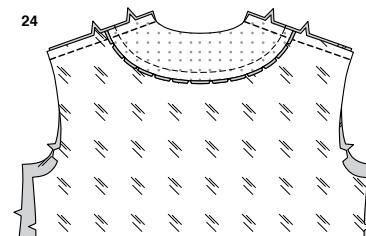
**21.** With RIGHT sides together, pin FRONT LINING (11) to facing, matching notches, clipping to stay-stitching as necessary. Stitch, leaving open below small dot. Clip facing seam allowance to small dot. Press seam toward lining above clip, pressing in remainder of seam allowance below clip.



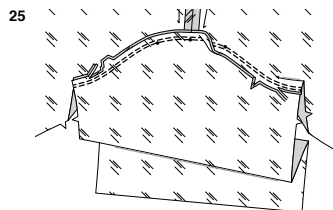
**22.** STAYSTITCH neck edge of BACK LINING (12), in direction of arrows.



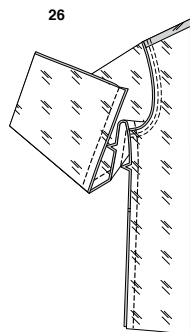
**23.** With RIGHT sides together, pin BACK FACING (9) to upper edge of back lining, clipping to stay-stitching as necessary. Baste. Stitch. Press seam down.



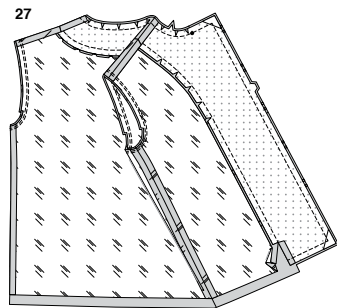
**24.** Stitch front lining and back lining/facing together at shoulder seams.



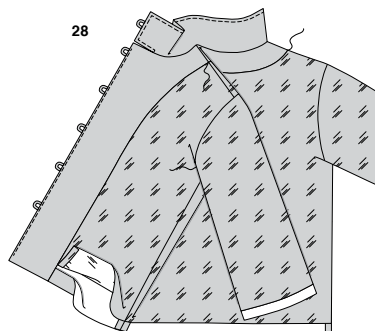
**25.** With RIGHT sides together, pin sleeve lining to armhole edge with center small dot at shoulder seam, matching notches and remaining small dots. Stitch. Stitch again 1/8" (3mm) from first stitching. Trim seam below notches close to stitching. Press seam toward sleeve.



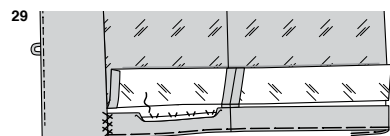
**26.** With RIGHT sides together, stitch front to back at entire underarm seam, matching armhole seams. Stitch again over first stitching, at underarm to reinforce.



**27.** With RIGHT sides together, pin lining to jacket, having raw edges even, matching notches. Stitch neck, front and lower edge of lining. **TRIM** seam. Clip curves.

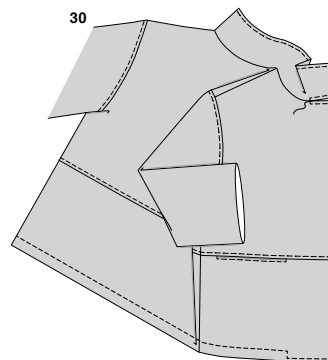


**28.** **UNDERSTITCH** facing as far as possible. Turn facing to **INSIDE**. Press. Turn facing/lining down. **TACK** sleeves at shoulders and underarms.

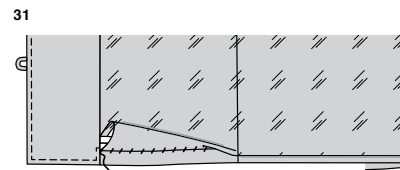


**29.** Turn up hem. Baste close to fold. Sew hem in place, easing in fullness if necessary. Press. **CATCHSTITCH** facing to hem.

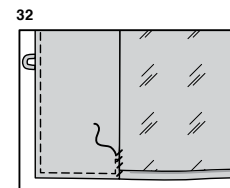
## FINISHING



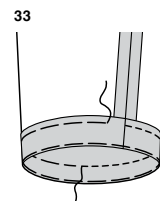
**30.** On **OUTSIDE**, **TOPSTITCH** outer edges of collar and jacket, continuing along stitching lines at lower edge, keeping lining free. Square stitching at collar opening, as shown.



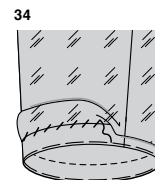
**31.** Turn in 5/8" (1.5cm) on lower edge of lining; place folded edge 5/8" (1.5cm) below raw edge of hem. **SLIPSTITCH** in place. **NOTE:** A pleat will form at lower edge for wearing ease.



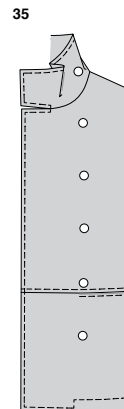
**32.** **SLIPSTITCH** remainder of lining to facing.



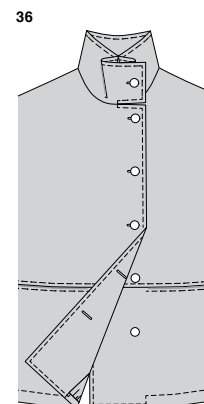
**33.** Turn up sleeve hem. Press. Baste close to fold. Baste 1/4" (6mm) from raw edge. Stitch inner edge along basting.



**34.** Turn in 5/8" (1.5cm) on lower edge of sleeve lining; place folded edge 5/8" (1.5cm) below raw edge of hem. **SLIPSTITCH** in place. **NOTE:** A pleat will form at lower edge for wearing



**35.** **VIEW A** - Sew buttons to **LEFT** front and collar at markings.



**36.** **VIEW B** - Make buttonholes in **RIGHT** front and collar at markings. Sew buttons to **LEFT** front and collar at markings.



# Congrats!

You've completed your sewing adventure

---

## SHARE YOUR LOOK



Post your pattern and tag us using [#simplicitypatterns](#)  
[@simplicity\\_creative\\_group](#)  
[@simplicitymccallsuk](#)  
[@simplicitymccallsaustralia](#)  
for a chance to be featured on our social media.

Look for more PDF patterns at [simplicity.com](http://simplicity.com) or for customers outside the U.S. and Canada visit [sewdirect.com](http://sewdirect.com) and [sewdirect.com.au](http://sewdirect.com.au)

Have a question or need help with your sewing project contact us:  
[Simplicity.com](http://Simplicity.com)    [Sewdirect.com](http://Sewdirect.com)    [Sewdirect.com.au](http://Sewdirect.com.au)



Simplicity ©2024 a division of IG Design Group Americas Inc. • Atlanta, GA 30342 USA [www.thedesigngroup.com](http://www.thedesigngroup.com) • All Rights Reserved. [www.simplicity.com](http://www.simplicity.com) • Made in the U.S.A. Fabriqué aux États-Unis.

To be used for individual private home use only and not for commercial or manufacturing purposes. • A usage privé seulement et non à des fins commerciales ou de production en série. • Para uso privado solamente, no se puede utilizar con propósitos de comercialización o de producción en serie.