

S3071

mig A DIY & LIFESTYLE BRAND



Scan QR code for a Sew-Along tutorial by sewing celebrity Mimi G.

Simplicity

Designed and printed in USA.

Average

UNISEX BLAZER

Suggested Fabrics: Cotton Blends, Double Knit, Lightweight Denim, Linen Blends, Ponte, Stretch Wovens, Wool and Wool Blends. **Lining:** Cotton Blends, Polyester Blends.

Interfacing: Lightweight Fusible.

Notions: Three ¾" (2cm) buttons, two 6" x 2" (15cm x 5cm) fleece remnants (for inside sleeves), pair of ½" - ¾" (1.3cm - 2cm) shoulder pads.

Sizes	XS	S	M	L	XL	XXL
	30-32	34-36	38-40	42-44	46-48	50-52

BODY MEASUREMENTS: Select pattern size based on body measurements

	XS	S	M	L	XL	XXL	
Chest	30-32	34-36	38-40	42-44	46-48	50-52	Ins.
Waist	26-27	28-30	32-34	36-39	42-44	46-48	"
Hip	32-34	35-37	39-41	43-45	47-49	51-53	"

Blazer

45**	3	3	3	3½	3½	3½	Yds.
60**	2½	2½	2½	2½	2½	2½	"

Lining

45**	2½	2½	2½	2½	2½	2½	Yds.
------	----	----	----	----	----	----	------

Interfacing

20"	2½	2½	2½	3	3½	3½	Yds.
-----	----	----	----	---	----	----	------

FINISHED GARMENT MEASUREMENTS (Includes Design and Wearing Ease)

Bust/ Chest	37	41	45	49	53	57	Ins.
Waist	37	41	45	49	53	57	"
Hip	37	41	45	49	53	57	"

Width, lower edge

Blazer	37	41	45	49	53	57	Ins.
---------------	----	----	----	----	----	----	------

Finished back length from base of neck

Blazer	33	33½	34	34½	35	35½	Ins.
---------------	----	-----	----	-----	----	-----	------

*with nap **without nap

Moins Facile

BLAZER UNISEXE

Tissus Conseillés: Cotonnades, Tricot double, Denim léger, Lin mélangés, Tricot ponte, Tissus tissés extensibles, Laine et lainages. **Doublure:** Cotonnades, Mélanges de polyester. **Entoilage:** Thermocollant léger.

Mercerie: 3 boutons de 2cm, deux morceaux de molleton de 15cm x 5cm (pour l'intérieur des manches), 1 paire d'épaulettes de 1.3cm - 2cm.

Tailles	TP/XS	P/S	M	G/L	TG/XL	TTG/XXL
Fr/ Eur	40-42	44-46	48-50	52-54	56-58	60-62

MESURES DU CORPS: Choisissez la taille du patron basée sur les mesures du corps

	TP/XS	P/S	M	G/L	TG/XL	TTG/XXL	
Poitrine	76-81	87-92	97-102	107-112	117-122	127-132	cm
Taille	66-69	71-76	81-87	92-99	107-112	117-122	"
Hanches	82-87	89-94	99-104	109-115	119-124	128-135	"

Blazer

115cm*	2.7	2.7	2.7	2.9	3.2	3.3	m
150cm*	1.9	1.9	2.1	2.1	2.4	2.5	"

Doublure

115cm**	2.3	2.3	2.4	2.4	2.4	2.4	m
---------	-----	-----	-----	-----	-----	-----	---

Entoilage

51cm	2.5	2.6	2.6	2.6	2.9	3.0	m
------	-----	-----	-----	-----	-----	-----	---

MESURES DES VÊTEMENTS FINI (Motif et aisance de port compris)

Poitrine	94	104	114	124	135	145	cm
Taille	94	104	114	124	135	145	"
Hanches	94	104	114	124	135	145	"

Largeur à l'ourlet

Blazer	94	104	114	124	135	145	cm
---------------	----	-----	-----	-----	-----	-----	----

Longueur finie – dos, votre nuque à l'ourlet

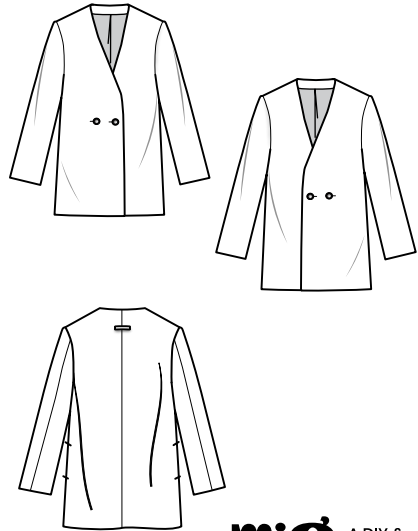
Blazer	84	85	86	88	89	90	cm
---------------	----	----	----	----	----	----	----

*avec sens **sans sens

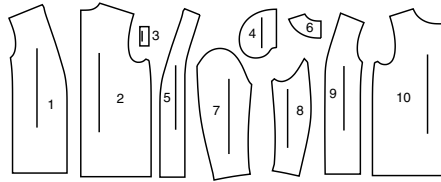


Simplicity®

Thank you for purchasing this Simplicity pattern. We made every effort to provide you with a high quality product.



miG A DIY & LIFESTYLE BRAND



- 1 Front
- 2 Back
- 3 Loop
- 4 Pocket
- 5 Front Facing
- 6 Back Facing
- 7 Upper Sleeve
- 8 Undersleeve
- 9 Front Lining
- 10 Back Lining

General Directions

The Pattern

- SYMBOLS**
- ↔ GRAIN LINE Place on straight grain of fabric parallel to selvage
 - ⇄ PLACE SOLID LINE on fold of fabric.
 - CENTER FRONT OR BACK OF garment.
 - ▽ NOTCHES
 - ○ DOTS
 - CUTTING LINE
 - == LENGTHEN OR SHORTEN LINES

SEAM ALLOWANCE: 5/8" (1.5cm) unless otherwise stated is included but not printed on MULTI-SIZE PATTERNS. Mark your size with colored felt tip pen. See chart on tissue for how to use MULTI-SIZE PATTERNS.

ADJUST IF NEEDED
Make adjustments before placing pattern on fabric.

TO LENGTHEN:
Cut pattern between lengthen or shorten lines. Spread pattern evenly, the amount needed and tape to paper.

TO SHORTEN:
At lengthen or shorten lines, make an even pleat taking up amount needed. Tape in place.

When lengthen or shorten lines are not given, make adjustments at lower edge of pattern.

Cutting/Marking

BEFORE CUTTING:
PRESS pattern pieces with a warm dry iron. PRE-SHRINK fabric by pre-washing washables or steam-pressing non-washables.

CIRCLE your cutting layout.

PIN pattern to fabric as shown in Cutting Layouts.

• FOR DOUBLE THICKNESS: Fold fabric with RIGHT sides together.

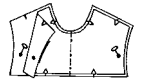
• FOR SINGLE THICKNESS: Place fabric RIGHT side up.

• FOR PILE, SHADED OR ONE WAY DESIGN FABRICS: Use "with nap" layouts

AFTER CUTTING:
Transfer markings to WRONG side of fabric before removing pattern. Use pin and chalk method or dressmaker's tracing paper and wheel.

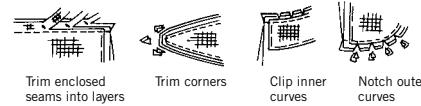
To Quick Mark:

- Snip edge of fabric to mark notches, ends of fold lines and center lines.
- Pin mark dots.



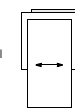
Sewing

- SEW garment following Sewing Directions.
- PIN or machine-baste seams matching notches.
- STITCH 5/8" (1.5 cm) seams unless otherwise stated.
- PRESS seams open unless otherwise indicated clipping when necessary so seams will lie flat.
- TRIM seams to reduce bulk, as shown below.



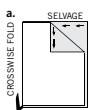
SPECIAL CUTTING NOTES

★ If layout shows a piece extending past fold, cut out all pieces except piece that extends.

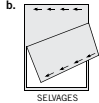


Open out fabric to single thickness. Cut extending piece on RIGHT side of fabric in position shown.

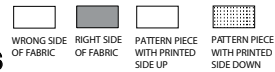
✱ Mark small arrows along both selvages indicating direction of nap or design. Fold fabric crosswise with RIGHT sides together, and cut along fold (a).



Turn one fabric layer around so arrows on both layers go in the same direction. Place RIGHT sides together (b).



Cutting Layouts

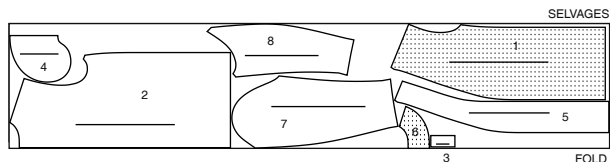


POSITION OF PATTERN PIECES MAY VARY SLIGHTLY ACCORDING TO YOUR PATTERN SIZE

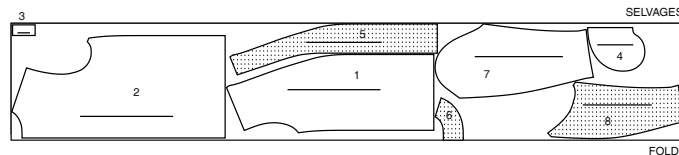
BLAZER

USE PIECES 1 2 3 4 5 6 7 8
PIECE 3 IS CUT ONE

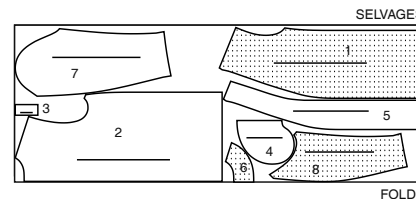
45" (115CM)
WITH NAP
SIZES XS S M L



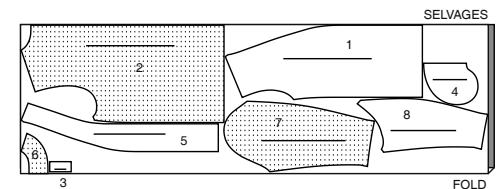
45" (115CM)
WITH NAP
SIZES XL XXL



60" (150CM)
WITH NAP
SIZES XS S M L



60" (150CM)
WITH NAP
SIZES XL XXL

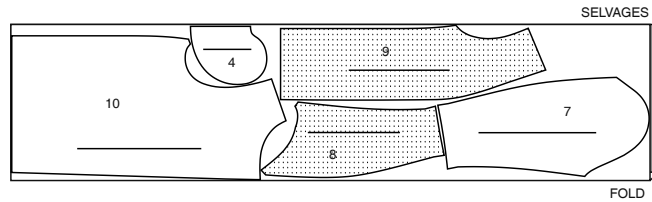


S3071

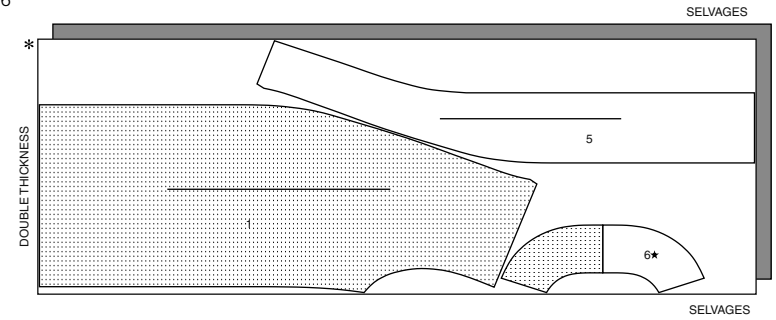
2 of 4

LINING

USE PIECES 4 7 8 9 10

45" (115CM)
WITHOUT NAP
ALL SIZES**INTERFACING**

USE PIECES 1 5 6

20" (51CM)
ALL SIZES**Sewing Directions**

FABRIC KEY: RIGHT SIDE, WRONG SIDE, INTERFACING, LINING (RIGHT SIDE), LINING (WRONG SIDE)

Read **General Directions** on page 1 before you begin.**GLOSSARY OF SEWING METHODS**Sewing methods shown in **BOLD** are defined below:

EASE – Loosen needle tension slightly. With **RIGHT** side up, stitch 5/8" (1.5cm) from cut edge using a long stitch. Stitch again 1/4" (6mm) from the first stitching within the seam allowance.

STAY-STITCH – Stitch 1/2" (1.3cm) from cut edge in direction of arrows. This stitching stays in permanently to prevent stretching on curved edges. (Shown only in the first illustration.)

UNDERSTITCH – Press facing and seam away from garment, stitching through facing and seam allowances close to seam.

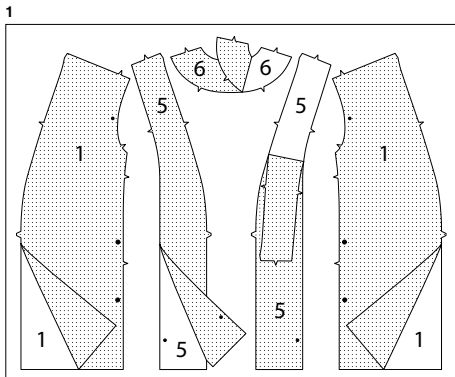
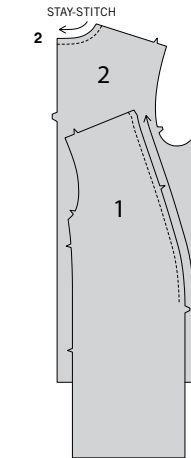
PATTERN PIECES WILL BE IDENTIFIED BY NUMBERS THE FIRST TIME THEY ARE USED. STITCH 5/8" (1.5CM) SEAMS WITH RIGHT SIDES TOGETHER UNLESS OTHERWISE STATED.

JACKET

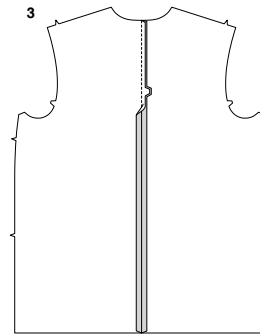
NOTE: Trim 1" (2.5cm) from lower edge of **UPPER SLEEVE (7)** and **LOWER SLEEVE (8)** lining sections before stitching seams.

INTERFACING

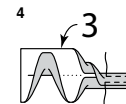
1. Pin interfacing to **WRONG** side of **FRONT (1)**, **FRONT FACING (5)**, and **BACK FACING (6)**. Fuse interfacing in place following manufacturer's directions.

**FRONT, BACK, LOOP, AND POCKETS**

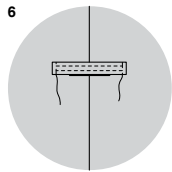
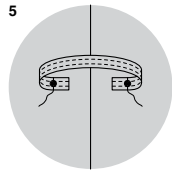
2. **STAY-STITCH** neck edge of **FRONT (1)** and **BACK (2)** in the direction of the arrows.



3. With **RIGHT** sides together and raw edges even, pin back sections together at center. Stitch.

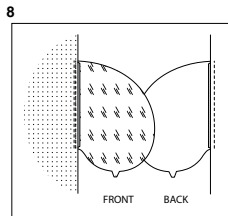
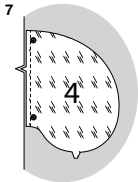


4. Fold **LOOP (3)** in half, lengthwise with **WRONG** sides together. Press, setting in a crease. Open out long edges of loop and turn them to **WRONG** side so that they meet at the crease. Press. Fold loop in half lengthwise, bringing pressed edges together. Stitch close to both long edges.



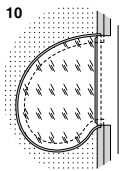
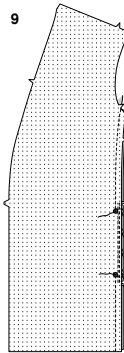
5. Press under ends of loop 5/8" (1.5cm). Open out the ends. Pin ends to back with crease centered on large dots. Stitch along crease, attaching loop securely.

6. Press loop in place. On **OUTSIDE**, stitch close to pressed ends.



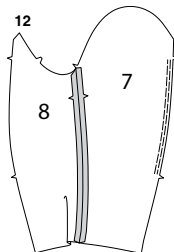
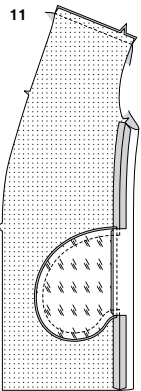
7. Pin **POCKET (4)** lining to side edges of front with **RIGHT** sides together and raw edges even, matching large dots and notches. Stitch in 3/8" (1cm) seam. Stitch fabric pocket to side edges of back and stitch in the same manner.

8. **UNDERSTITCH** the front pocket lining. Press seam toward pocket, pressing pocket out.



9. Pin front to back at side seams, matching large dots. Stitch side seams, leaving an opening between large dots. Stitch pocket edges together between the side seams.

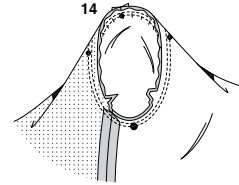
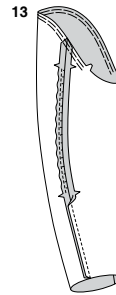
10. Clip garment back seam allowance above and below pocket. Press seam open above and below clip. Press pockets toward front.



11. Stitch front to back at shoulder edges.

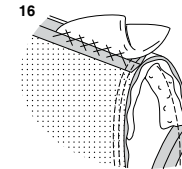
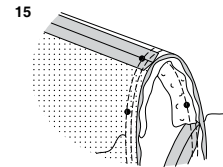
SLEEVE

12. Pin **UPPER SLEEVE (7)** to **UNDERSLEEVE (8)** at front edge. Stitch front seam. **EASE** back edge of upper sleeve between notches.



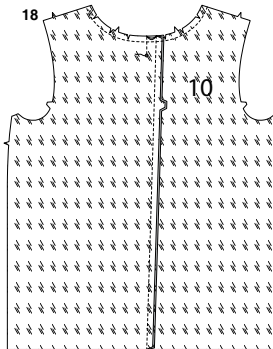
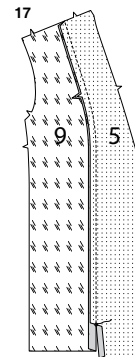
13. With **RIGHT** sides together, pin upper sleeve to undersleeve at back edge, matching large dots, pulling up ease stitches to fit. Stitch. **EASE** upper edge of sleeve between the notches.

14. To set in sleeve, turn sleeve **RIGHT** side out. Hold jacket **WRONG** side out with armhole toward you. With **RIGHT** sides together, pin sleeve to armhole edge with center small dot at shoulder seam, matching underarm seam to side seam, matching remaining dots. Pull up ease stitches to fit. To distribute fullness evenly, slide fabric along bobbin threads until there are no puckers or tucks on the seam line. Baste. Stitch. Stitch again 1/4" (6mm) from first stitching. Trim seam below notches close to stitching. Press only the seam allowance, shrinking out fullness



15. Cut two remnants of polyester fleece 2" (5cm) x 6" (15cm) for sleeve headers. Pin header to armhole on the **INSIDE** of sleeve, placing the center of header at shoulder seam, having raw edges even. Stitch 1/2" (1.3cm) from jacket side (not the sleeve side).

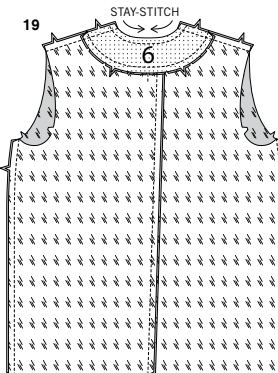
16. Pin shoulder pad to **INSIDE** of jacket with largest layer of pad against the jacket. The shoulder line of the pad should match the shoulder seam of the coat and the straightest edge of the pad should extend 1/2" (1.3cm) beyond the armhole seam line. Try on jacket to check pad placement. Adjust to fit until they look right and feel comfortable. On **INSIDE**, catch stitch each pad to shoulder seam line, as shown.



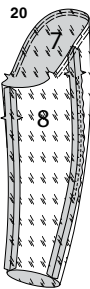
LINING

17. With **RIGHT** sides together, pin **FRONT FACING (5)** to **FRONT LINING (9)**, matching small dots and notches. Stitch seam above small dot, back-stitching at dot to reinforce seam. Clip only the facing seam allowance at end of stitching, as shown. Press seam toward lining, pressing under 5/8" (1.5cm) on inner edge of facing below clip, as shown.

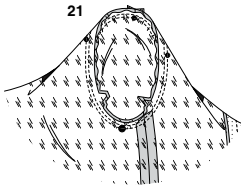
18. Stitch center back seam of **BACK LINING (10)**. To make a pleat at upper edge, with **RIGHT** sides together, stitch along stitching line. Press center back seam and pleat to one side. Machine-stitch upper edge of back lining. Clip upper edge of lining to stay-stitching.



19. **STAY-STITCH** neck edge of **BACK FACING (6)** in the direction of the arrows. With **RIGHT** sides together and raw edges even, pin lower edge of back facing to upper edge of back lining, matching notches. Stitch. Trim seam. Press seam toward lining. Stitch back lining/facing to front lining/facing at shoulder and side edges.

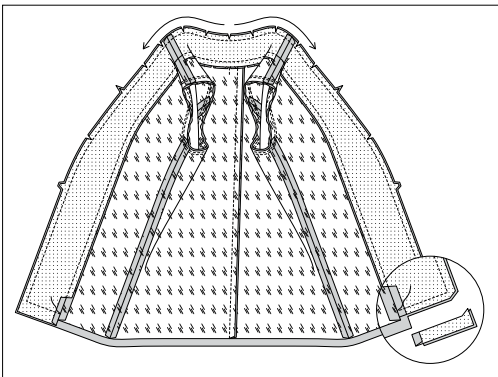


- 20.** Pin UPPER SLEEVE (7) lining to UNDERSLEEVE (8) lining at front edge. Stitch front seam. EASE back edge of upper sleeve between notches.
With RIGHT sides together, pin upper sleeve to undersleeve at back edge, matching notches, pulling up ease stitches to fit. Stitch.
EASE upper edge of sleeve between the notches.



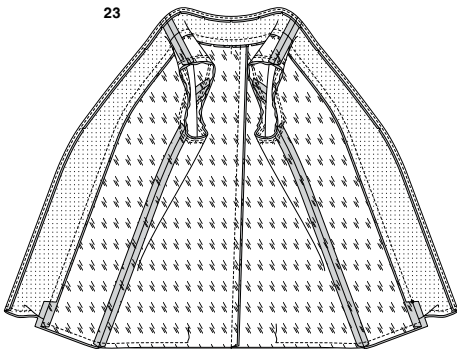
- 21.** To set in sleeve, turn sleeve lining RIGHT side out. Hold lining WRONG side out with armhole toward you. With RIGHT sides together, pin sleeve to armhole edge with center small dot at shoulder seam, matching underarm seam to side seam, matching remaining dots. Pull up ease stitches to fit. To distribute fullness evenly, slide fabric along bobbin threads until there are no puckers or tucks on the seam line. Baste. Stitch. Stitch again 1/4" (6mm) from first stitching. Trim seam below notches close to stitching. Press only the seam allowance, shrinking out fullness.

22

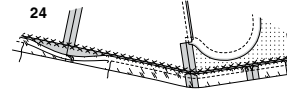


- 22.** With RIGHT sides together and raw edges even, pin lining to jacket, matching centers, seams, and notches. Stitch each half of jacket from center back to inner edge of facing. Trim seams and corners; clip curves. Trim facing close to stitching. Trim garment to within 5/8" (1.5cm) of inner edge of facing.

23

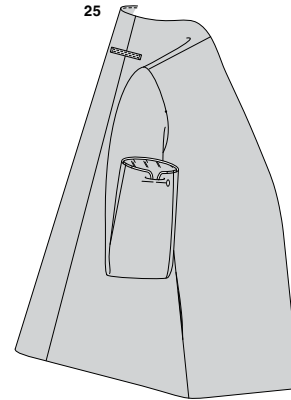


- 23.** UNDERSTITCH the facing. With RIGHT sides together, pin lower edges of jacket and lining together, matching centers and seams.
Stitch in 1/2" (1.3cm) seam, leaving an opening for turning.



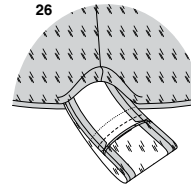
- 24.** With the WRONG side of coat facing you, turn up hem on lower edge of coat. Catch-stitch coat hem in place, being careful not to catch in opening edge of lining in back.

25



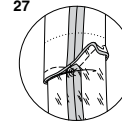
- 25.** Turn jacket RIGHT side out through opening in lining; press. Slip sleeve in place. To match seams correctly, turn sleeve edges of jacket and lining toward each other, as shown. Anchor the turned edges with a pin. (This will enable you to pin the lower edges together more easily when you are ready to stitch the sleeve edges together).

26



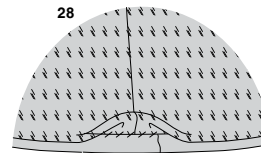
- 26.** Pull sleeve through opening in lower edge of jacket, having WRONG sides out, separating jacket sleeve from lining sleeve. With RIGHT sides together, pin sleeve to lining, matching seams. Stitch.

27



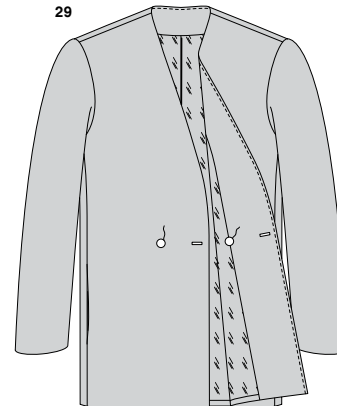
- 27.** Turn seam allowance of sleeve and sleeve lining toward lining. Tack seam in place, as shown.

28



- 28.** Turn sleeve and lining back to INSIDE; press, pressing up hem allowance. (If you prefer, slip hand through opening in lower edges of jacket. Tack shoulder and armhole seams of jacket and lining together loosely.) Press under 1/2" (1.3cm) on opening edge of lining. Slip-stitch pressed edge of lining 1" (2.5cm) above lower edge of coat. Allow coat and sleeve lining to drop. Press.

29



FINISHING

- 29.** On OUTSIDE, make buttonholes in both front sections at markings.
To lap jacket RIGHT over LEFT, sew a 3/4" (2cm) button on INSIDE at marking on RIGHT side. To lap jacket LEFT over RIGHT, sew 3/4" (2cm) button to inside at marking on LEFT side, as shown.



Congrats!

You've completed your sewing adventure

SHARE YOUR LOOK



Post your pattern and tag us using [#simplicitypatterns](#)
[@simplicity_creative_group](#)
[@simplicitymccallsuk](#)
[@simplicitymccallsaustralia](#)
for a chance to be featured on our social media.

Look for more PDF patterns at [simplicity.com](#) or for customers outside the U.S. and Canada visit [sewdirect.com](#) and [sewdirect.com.au](#)

Have a question or need help with your sewing project contact us:
[Simplicity.com](#) [Sewdirect.com](#) [Sewdirect.com.au](#)



Simplicity ©2024 a division of IG Design Group Americas Inc. • Atlanta, GA 30342 USA [www.thedesigngroup.com](#) • All Rights Reserved. [www.simplicity.com](#) • Made in the U.S.A. Fabriqué aux États-Unis.

To be used for individual private home use only and not for commercial or manufacturing purposes. • A usage privé seulement et non à des fins commerciales ou de production en série. • Para uso privado solamente, no se puede utilizar con propósitos de comercialización o de producción en serie.