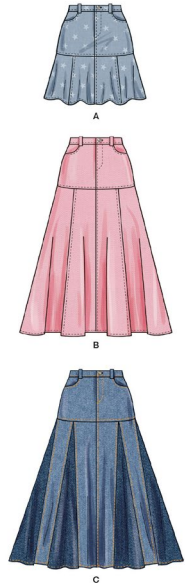


S3070

Simplicity®



Designed and printed in USA.

Average

MISSES' SKIRTS

Suggested Fabrics: Chino, Cotton Blends, Denim, Twill. Lining: Lawn. Interfacing: Lightweight Fusible.

Notions: A,B,C: One 7" (18cm) zipper (cut to fit), one 3/4" (2cm) button.

Sizes	8	10	12	14	16	18	20	22	24	26
European	34	36	38	40	42	44	46	48	50	52

BODY MEASUREMENTS: Select pattern size based on body measurements

Bust	31½	32½	34	36	38	40	42	44	46	48	Ins.
Waist	24	25	26½	28	30	32	34	37	39	41½	"
Hip-9" below waist	33¼	34½	36	38	40	42	44	46	48	50	"
Back-neck to waist	15¾	16	16¼	16½	16¾	17	17¼	17½	17¾	18	"

Lining A,B,C 45** - ¾ yd.

Interfacing 20" - ¾ yd.

Skirt A	45**	1½	1½	1½	1½	1¾	1¾	1¾	1¾	1¾	1¾	Yds.
	60**	1	1	1	1	1	1	1	1	1	1	"

Skirt B,C	45**	2½	2½	2½	2½	2¾	3	3	3	3¾	3¾	Yds.
	60**	2	2	2	2	2¼	2¼	2¼	2¼	2¼	2¼	"

Contrast (Godet) C

45/60** - 1½ yds.

FINISHED GARMENT MEASUREMENTS (Includes Design and Wearing Ease)

A,B,C Hip 39½ 40½ 42 44 46 48 50 52 54 56 Ins.

Width, lower edge

Skirt A	60	61	62½	64½	66½	68½	70½	72½	74½	76½	Ins.
Skirt B	91½	92½	94	96	98	100	102	104	106	108	"

Finished back length from waist

Skirt A (sits ½" below waist) 19 19 19 19 19 19 19 19 19 19 19 Ins.

Skirt B,C (sits ½" below waist)

	32	32	32	32	32	32	32	32	32	32	Ins.
--	----	----	----	----	----	----	----	----	----	----	------

*with nap **without nap

Moins Facile

JUPES POUR JEUNES FEMMES

Tissus Conseillés: Chino, Cotonnades, Denim, Twill. Doublure: Linon. Entoilage: Thermocollant léger.

Mercerie: A,B,C: 1 fermeture à glissière de 18cm (coupée pour ajuster), 1 bouton de 2cm.

Tailles	8	10	12	14	16	18	20	22	24	26
Françaises	36	38	40	42	44	46	48	50	52	54
Européen	34	36	38	40	42	44	46	48	50	52

MESURES DU CORPS: Choisissez la taille du patron basée sur les mesures du corps

Poitrine	80	83	87	92	97	102	107	112	117	122	cm
Taille	61	64	67	71	76	81	87	94	99	106	"
Hanches (23cm au-dessous de la taille)	85	88	92	97	102	107	112	117	122	127	cm
Dos du cou à la taille	40	40.5	41.5	42	42.5	43	44	44	44.5	44.5	"

Doublure A,B,C 115cm* - 0.3m

Entoilage 51cm - 0.7m

Jupe A	115cm*	1.4	1.4	1.4	1.4	1.6	1.6	1.6	1.6	1.7	1.7	m
	150cm*	0.9	0.9	0.9	0.9	0.9	0.9	0.9	0.9	0.9	1.4	"

Jupe B,C	115cm*	2.2	2.2	2.3	2.6	2.6	2.7	2.7	2.7	2.7	2.9	m
	150cm*	1.8	1.8	1.8	1.8	2.1	2.1	2.1	2.1	2.1	2.1	"

Contraste (Godet) C

115/150cm* - 1.3m

MESURES DES VÊTEMENTS FINI (Motif et aisance de port compris)

A,B,C Hanches 100 103 107 112 117 122 127 132 137 142 cm

Largeur à l'ourlet

Jupe A	152	155	159	164	169	174	179	184	189	194	cm
Jupe B	232	235	239	244	249	254	259	264	269	274	"

Longueur finie - dos, taille à l'ourlet

Jupe A (repose 1.3cm dessous de la taille) 48 48 48 48 48 48 48 48 48 48 48 cm

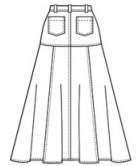
Jupe B,C (repose 1.3cm dessous de la taille)

	81	81	81	81	81	81	81	81	81	81	cm
--	----	----	----	----	----	----	----	----	----	----	----

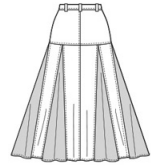
*avec sens **sans sens



A



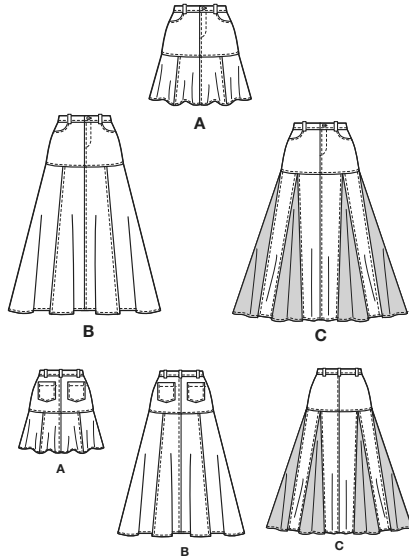
B



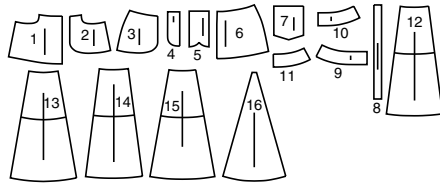
C

Simplicity®

Thank you for purchasing this Simplicity pattern. We made every effort to provide you with a high quality product.



16 PIECES



- 1 Yoke Front-A,B,C
- 2 Pocket Facing-A,B,C
- 3 Side Front and Pocket-A,B,C
- 4 Left Fly Facing-A,B,C
- 5 Right Fly-A,B,C
- 6 Yoke Back-A,B,C
- 7 Back Pocket-A,B
- 8 Carrier-A,B,C
- 9 Right Front Waistband-A,B,C
- 10 Left Front Waistband-A,B,C
- 11 Back Waistband-A,B,C
- 12 Front-A,B,C (c.l.A)
- 13 Side Front-A,B,C
- 14 Back-A,B,C
- 15 Side Back-A,B,C
- 16 Godet-C

The Pattern

- SYMBOLS**
- ← → GRAIN LINE Place on straight grain of fabric parallel to selvage
 - ⇄ PLACE SOLID LINE on fold of fabric.
 - — — CENTER FRONT OR BACK of garment.
 - ▽▽▽ NOTCHES
 - ○ DOTS
 - — — CUTTING LINE
 - ==== LENGTHEN OR SHORTEN LINES
- SEAM ALLOWANCE: 5/8" (1.5cm) unless otherwise stated is included but not printed on MULTI-SIZE PATTERNS. Mark your size with colored felt tip pen. See chart on tissue for how to use MULTI-SIZE PATTERNS.

General Directions

- ADJUST IF NEEDED**
- Make adjustments before placing pattern on fabric.
- TO LENGTHEN:** Cut pattern between lengthen or shorten lines. Spread pattern evenly, the amount needed and tape to paper.
- TO SHORTEN:** At lengthen or shorten lines, make an even pleat taking up amount needed. Tape in place.
- When lengthen or shorten lines are not given, make adjustments at lower edge of pattern.

Cutting/Marking

- BEFORE CUTTING:**
- PRESS pattern pieces with a warm dry iron. PRE-SHRINK fabric by pre-washing washables or steam-pressing non-washables.
 - CIRCLE your cutting layout.
 - PIN pattern to fabric as shown in Cutting Layouts.
 - FOR DOUBLE THICKNESS: Fold fabric with RIGHT sides together.
 - FOR SINGLE THICKNESS: Place fabric RIGHT side up.
 - FOR PILE, SHADED OR ONE WAY DESIGN FABRICS: Use "with nap" layouts
- AFTER CUTTING:**
- Transfer markings to WRONG side of fabric before removing pattern. Use pin and chalk method or dressmaker's tracing paper and wheel.
 - **To Quick Mark:**
 - Snip edge of fabric to mark notches, ends of fold lines and center lines.
 - Pin mark dots.

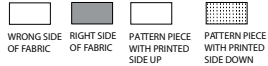
Sewing

- SEW garment following **Sewing Directions**.
 - PIN or machine-baste seams matching notches.
 - STITCH 5/8" (1.5 cm) seams unless otherwise stated.
 - PRESS seams open unless otherwise indicated clipping when necessary so seams will lie flat.
 - TRIM seams to reduce bulk, as shown below.
-

SPECIAL CUTTING NOTES

- ★ If layout shows a piece extending past fold, cut out all pieces except piece that extends.
 - ✱ Mark small arrows along both selvages indicating direction of nap or design. Fold fabric crosswise with RIGHT sides together, and cut along fold (a).
 - Turn one fabric layer around so arrows on both layers go in the same direction. Place RIGHT sides together (b).
-

Cutting Layouts



POSITION OF PATTERN PIECES MAY VARY SLIGHTLY ACCORDING TO YOUR PATTERN SIZE

LINING A,B,C

USE PIECE 2

45" (115CM) WITHOUT NAP ALL SIZES

INTERFACING A,B,C

USE PIECES 4 5 9 10 11

20" (51CM) ALL SIZES

SKIRT A

USE PIECES 1 3 4 5 6 7 8 9 10 11 12 13 14 15

45" (115CM) WITH NAP SIZES 8 10 12 14

45" (115CM) WITH NAP SIZES 16 18 20 22 24 26

60" (150CM) WITH NAP ALL SIZES

SKIRT B,C

USE PIECES 1 3 4 5 6 7 8 9 10 11 12 13 14 15

45" (115CM) WITH NAP SIZES 8 10 12

45" (115CM) WITH NAP SIZES 14 16 18 20 22 24 26

60" (150CM) WITH NAP SIZES 8 10 12 14

60" (150CM) WITH NAP SIZES 16 18 20 22 24 26

CONTRAST C (GODETS)

USE PIECE 16

45"/60" (115CM/150CM) WITH NAP ALL SIZES

SEWING TUTORIALS



Build your skills viewing short, easy-to-follow videos at simplicity.com/sewingtutorials

Sewing Directions

FABRIC KEY RIGHT SIDE WRONG SIDE INTERFACING LINING FINISHES

Read **General Directions** on page 1 before you begin.

GLOSSARY OF SEWING METHODS

Sewing methods shown in **BOLD TYPE** are defined below:

EDGESTITCH - See **Machine Stitches**: "how to edgestitch" video.

FINISH - See **Seams**: "how to finish seam allowances" video.

STITCH IN THE DITCH - See **Machine Stitches**: "how to stitch in the ditch" video.

TRIM - See **Seams**: "How to Sew: Trim, Clip, and Layer Seams" video.

TOPSTITCH - See **Machine Stitches**: "how to topstitch" video.

UNDERSTITCH - See **Machine Stitches**: "how to understitch" video.

PATTERN PIECES WILL BE IDENTIFIED BY NUMBERS THE FIRST TIME THEY ARE USED.

STITCH SEAMS WITH RIGHT SIDES TOGETHER IN 5/8" (1.5CM) SEAM ALLOWANCE UNLESS OTHERWISE STATED.

SKIRT A, B, C

NOTE: *The first view mentioned will be shown, unless otherwise mentioned.*

1. Fuse **INTERFACING** to **WRONG** side of each matching **FABRIC** section following manufacturer's instructions.

2. Stitch **POCKET FACING** (2) section to upper side edge of **YOKE FRONT** (1), matching notches and small dots. **TRIM**.

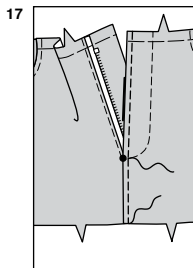
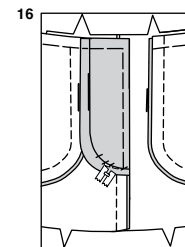
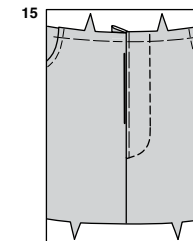
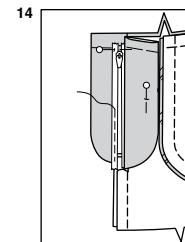
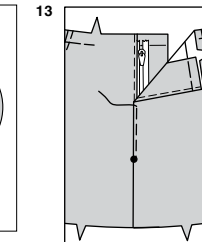
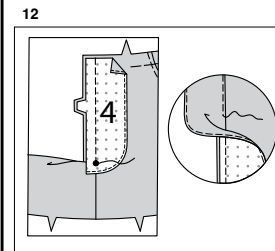
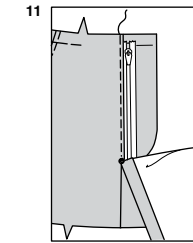
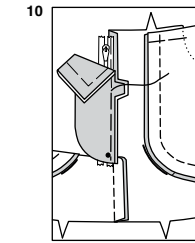
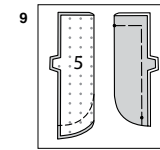
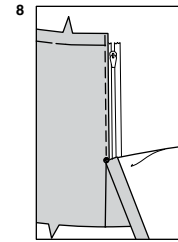
3. Turn pocket facing to inside. Press. **TOPSTITCH** 1/4"(6mm) from finished edge.

4. Pin **SIDE FRONT AND POCKET** (3) to outer edge of pocket facing, **RIGHT** sides together, matching notches. Stitch, keeping front free.

5. Baste upper and side edges, matching large and small dots.

6. Stitch yoke front sections together at center front, leaving open above large dot. Clip 3/8"(1cm) into right front seam allowance at large dot.

7. Press seam toward left front below clip. Turn in right front opening edge along foldline; press.



8. Place closed zipper (face up) under right front opening edge, having pressed edge close to zipper teeth and upper zipper stop 3/4"(2cm) from upper edge. Using a zipper foot, machine-baste close to pressed edge.

9. Fold **RIGHT FLY** (5) in half lengthwise, **RIGHT** sides together, having raw edges even. Stitch along curved edge. **TRIM**. Turn right side out. Press. Baste raw edges.

10. On **INSIDE**, pin right fly to right front opening edge (over zipper), matching notches and small dots, having raw edges even. Baste along previous basting for zipper.

11. On **OUTSIDE**, using a zipper foot, stitch close to pressed edge of right front through all layers.

12. **FINISH** outer curved edge of **LEFT FLY FACING** (4). Pin fly facing to left front opening edge, matching notches, and large dots. Stitch, ending at large dot. Trim. **UNDERSTITCH** fly facing.

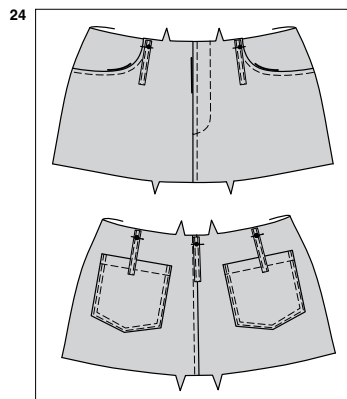
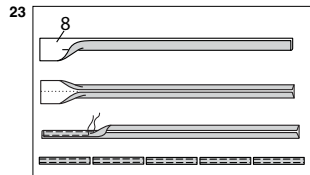
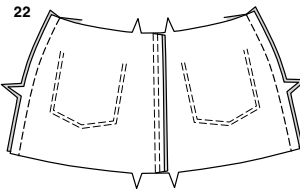
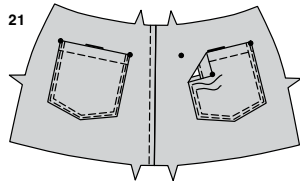
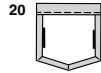
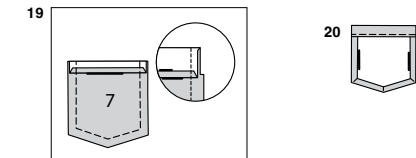
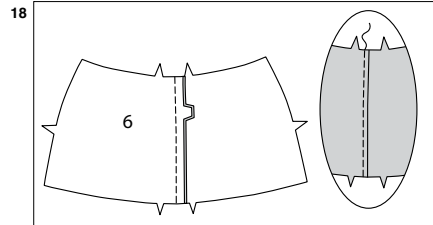
13. Turn facing to inside. Press. Lap left front over right, matching centers. Baste close to edge through all thicknesses.

14. Pin right fly out of the way. Open out fly facing. Pin remaining zipper tape to fly facing, keeping left front free. Using a zipper foot, stitch in place along center of zipper tape.

15. Turn facing down. On **OUTSIDE**, stitch left front along stitching lines, keeping right fly free.

16. Turn right fly back in place. On **INSIDE**, hand tack fly and facing together at lower edge, as shown. Trim away excess zipper tape even with lower edge of fly, if needed.

17. **TOPSTITCH** left front below large dot. Open zipper. **TOPSTITCH** left front opening edge above large dot, keeping right front free.



18. Stitch center back seam in YOKE BACK (6). Press seam toward right back.
TOPSTITCH left yoke back.

VIEWS A, B

19. Press under 1/4" (6mm) on upper edge of BACK POCKET (7). Turn upper edge to OUTSIDE along foldline, forming a facing. Stitch along seamline on raw edges. Trim seam allowance in the facing area to 1/4" (6mm).

20. Turn corners RIGHT side out, turning facing to the WRONG side. Press, pressing under raw edges along stitching, folding in corners diagonally. Stitch facing close to inner edge.

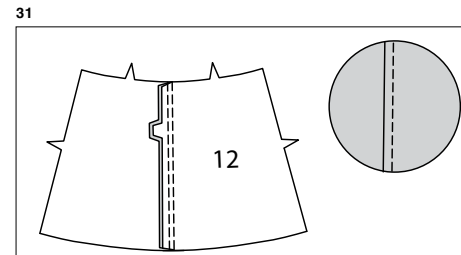
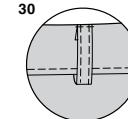
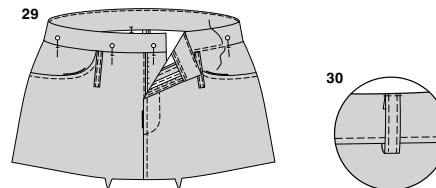
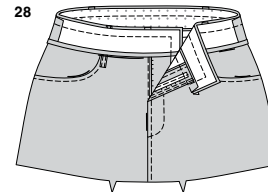
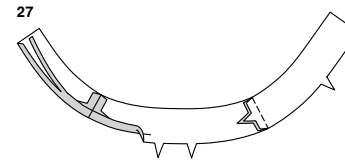
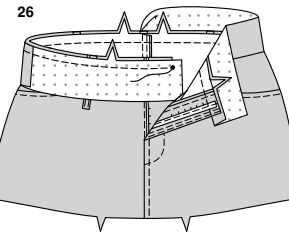
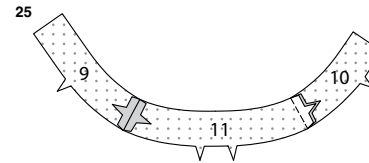
21. Pin back pocket to yoke back matching large dots.
EDGESTITCH and **TOPSTITCH** sides and lower edges.

CONTINUES AS FOLLOWS FOR ALL VIEWS

22. Stitch yoke front to yoke back at sides.

23. Fold CARRIER (8) in half lengthwise, with WRONG sides together. Press.
Open out long edges of carrier and turn them to WRONG side so that they meet at the crease. Press.
Fold carrier in half lengthwise, bringing pressed edges together. Stitch close to both long edges. Cut five carriers, each 4" (10cm) long.

24. Pin carriers to upper edge of yoke, centering over large dots. Baste. Stitch across carriers 1/2" (1.3cm) from seamline.



25. With RIGHT sides together, stitch interfaced RIGHT FRONT WAISTBAND (9) and LEFT FRONT WAISTBAND (10) to BACK WAISTBAND (11) at sides. Remaining waistband sections will be used as facings.

26. With RIGHT sides together, pin lower edge of waistband to upper edge of yoke matching notches, centers, small dots, and seams, having ends of waistband extending 5/8" (1.5cm). Baste. Stitch. **TRIM**. Press seam.

27. Stitch side seams of waistband FACING sections. Press under 1/2" (1.3cm) on notched edge of facing. Trim to 1/4" (6mm).

28. With RIGHT sides together, pin facing to waistband matching centers and seams. Stitch upper and front edges. **TRIM**.

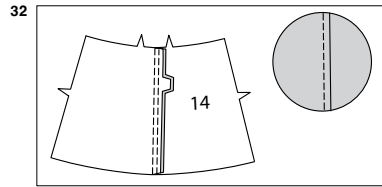
29. **UNDERSTITCH** facing as far as possible. Turn facing to INSIDE. Press. On INSIDE, pin pressed edge of waistband facing over seam, placing pins on OUTSIDE. On OUTSIDE, **STITCH IN THE DITCH** of waistband seam, catching in pressed edge of facing on INSIDE. **TOPSTITCH** waistband 1/4" (6mm) above seam.

30. Turn under 1/2" (1.3cm) on free end of carrier. Press. Pin pressed edge of carrier to upper edge of waistband. Stitch close to pressed edge of carriers.

31. Stitch center front seam in FRONT (12). Press seam allowance toward left front.
TOPSTITCH left front 1/4" (6mm) from seam.

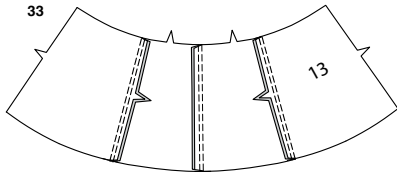
S3070

4 of 4

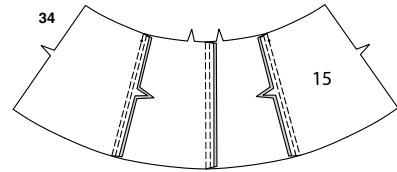


- 32.** Stitch center back seam in BACK (14). Press seam allowance toward left back.
TOPSTITCH left back 1/4"(6mm) from seam.

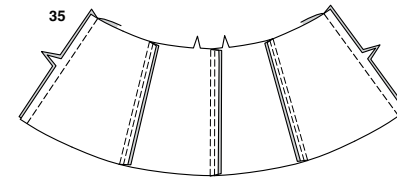
VIEWS A, B



- 33.** Stitch SIDE FRONT (13) sections to side edges of front. Press seams toward front.
TOPSTITCH front 1/4"(6mm) from seams.

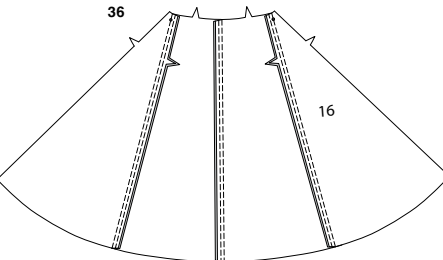


- 34.** Stitch SIDE BACK (15) sections to side edges of back. Press seam allowances toward back.
TOPSTITCH back 1/4"(6mm) from seams.

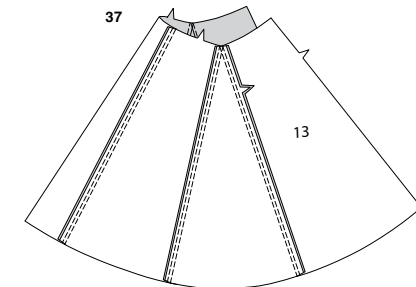


- 35.** Stitch back to front at sides.

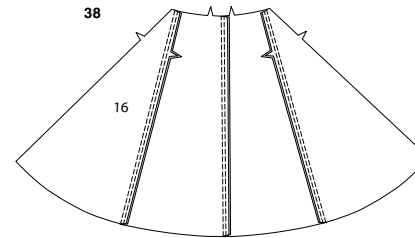
VIEW C



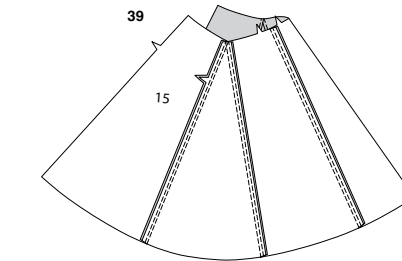
- 36.** Stitch two GODET (16) sections to side edges of front, matching notches and small dots. Press seam allowances toward front.
TOPSTITCH front 1/4"(6mm) from seams.



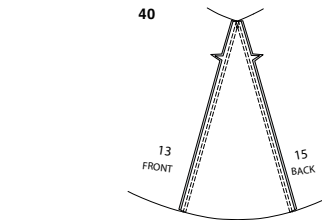
- 37.** Stitch SIDE FRONT (13) sections to side edges of front godets, matching notches and small dots. Press seam allowances toward side fronts.
TOPSTITCH side fronts 1/4"(6mm) from seams.



- 38.** Stitch two godet sections to side edges of back, matching notches and small dots. Press seam allowances toward back.
TOPSTITCH back 1/4"(6mm) from seams.

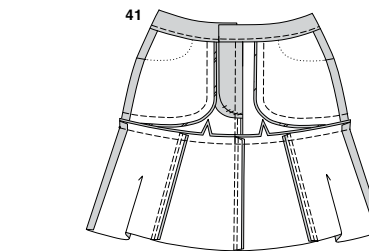


- 39.** Stitch SIDE BACK (15) sections to side edges of back godets, matching notches and small dots. Press seam allowances toward side backs.
TOPSTITCH side backs 1/4"(6mm) from seams.

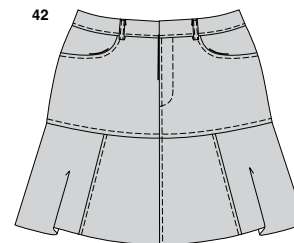


- 40.** Pin remaining godets to side edges of side front and side back sections, matching notches and small dots. Stitch. Press seam allowances toward side fronts and side backs.
TOPSTITCH side fronts and side backs 1/4"(6mm) from seams.

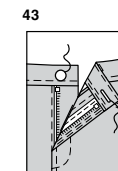
CONTINUE AS FOLLOWS FOR ALL VIEWS.



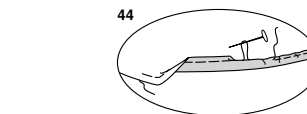
- 41.** Pin lower edge of yoke to upper edge of skirt, RIGHT sides together, matching centers, notches and side seams. Stitch. Press seam allowance toward yoke.



- 42.** TOPSTITCH yoke 1/4"(6mm) from seam.



- 43.** Make buttonhole in left front waistband at marking. Sew button to right front waistband at marking.



- 44.** To hem lower edge, machine baste 1/4"(6mm) from raw edge using long machine stitches, as shown. Press up 5/8"(1.5cm) narrow hem on lower edge. Turn under raw edge along line of basting. Pull thread to ease in fullness. Stitch in place.



Congrats!

You've completed your sewing adventure

SHARE YOUR LOOK



Post your pattern and tag us using [#simplicitypatterns](#)
[@simplicity creative group](#)
[@simplicitymccallsuk](#)
[@simplicitymccallsaustralia](#)
for a chance to be featured on our social media.

Look for more PDF patterns at [simplicity.com](#) or for customers outside the U.S. and Canada visit [sewdirect.com](#) and [sewdirect.com.au](#)

Have a question or need help with your sewing project contact us:
[Simplicity.com](#) [Sewdirect.com](#) [Sewdirect.com.au](#)



Simplicity ©2024 a division of IG Design Group Americas Inc. • Atlanta, GA 30342 USA [www.thedesigngroup.com](#) • All Rights Reserved. [www.simplicity.com](#) • Made in the U.S.A. Fabriqué aux États-Unis.

To be used for individual private home use only and not for commercial or manufacturing purposes. • A usage privé seulement et non à des fins commerciales ou de production en série. • Para uso privado solamente, no se puede utilizar con propósitos de comercialización o de producción en serie.