

S3069

Simplicity®



A



B



C

Designed and printed in USA.



MISSES' PANTS AND SHORTS Average

MISSES' PANTS AND SHORTS

Suggested Fabrics: Chino, Cotton Blends, Denim, Twill. Not suitable for stripes or plaids.

Interfacing: Lightweight Fusible.

Notions: A, B, C: One 7" (18cm) zipper (cut to fit), one ¾" (2cm) button.

Sizes	4	6	8	10	12	14	16	18	20	22
European	30	32	34	36	38	40	42	44	46	48

BODY MEASUREMENTS: Select pattern size based on body measurements

Bust	29½	30½	31½	32½	34	36	38	40	42	44	Ins.
Waist	22	23	24	25	26½	28	30	32	34	37	"
Hip-9" below waist	31½	32½	33½	34½	36	38	40	42	44	46	"
Back-neck to waist	15½	15½	15½	16	16¼	16½	16¾	17	17¼	17¾	"

Interfacing A, B, C - 20" - ¾ yd.

Pants A	45**	2%	2¼	2¼	2%	2%	2½	2½	2%	2%	2¾	Yds.
60**	1½	1½	1%	1%	1¾	1¾	2	2	2%	2¼	2¼	"

Pants B	45**	2%	2%	2%	2%	2½	2½	2%	2%	2%	2%	Yds.
60**	1¾	1¾	1¾	1¾	1%	1%	2	2¼	2¼	2¼	"	

Shorts C	45**	1%	1%	1%	1%	1%	1%	1%	1%	1¾	Yds.
60**	1¼	1¼	1¼	1¼	1¼	1¼	1¼	1¼	1¼	1¼	"

FINISHED GARMENT MEASUREMENTS (Includes Design and Wearing Ease)

A, B, C Hip	37½	38½	39½	40½	42	44	46	48	50	52	Ins.
-------------	-----	-----	-----	-----	----	----	----	----	----	----	------

Width, each leg

Pants A, B	15	15½	16	16½	17¼	18¼	19¼	20¼	21¼	22¼	Ins.
Shorts C	21¼	22½	23¼	24	25	26¼	27½	28¾	30	31¼	"

Finished side length from waist

Pants A, B (sit 1½" below waist)	41	41¼	41½	41¾	42	42¼	42½	42¾	43	43¼	Ins.
----------------------------------	----	-----	-----	-----	----	-----	-----	-----	----	-----	------

Shorts C (sit 1½" below waist)

	18¾	19	19¼	19½	19¾	20	20¼	20½	20¾	21	Ins.
--	-----	----	-----	-----	-----	----	-----	-----	-----	----	------

*with nap **without nap

PANTALONS ET SHORT POUR JEUNES FEMMES Moins Facile

PANTALONS ET SHORT POUR JEUNES FEMMES

Tissus Conseillés: Chino, Cottonnades, Denim, Twill. Ne pas convenable pour les tissus à rayures ou à carreaux. **Entoilage:** Thermocollant léger.

Mercerie: A, B, C: 1 fermeture à glissière de 18cm (coupée pour ajuster), 1 bouton de 2cm.

Tailles	4	6	8	10	12	14	16	18	20	22
Françaises	32	34	36	38	40	42	44	46	48	50
Européen	30	32	34	36	38	40	42	44	46	48

MESURES DU CORPS: Choisissez la taille du patron basée sur les mesures du corps

Poitrine	75	78	80	83	87	92	97	102	107	112	cm
Taille	56	58	61	64	67	71	76	81	87	94	"
Hanches (23cm au-dessous de la taille)	80	83	85	88	92	97	102	107	112	117	cm
Dos du cou à la taille	38.5	39.5	40	40.5	41.5	42	42.5	43	44	44	"

Entoilage A, B, C - 51cm - 0.7m

Pantalon A	115cm*	1.9	2.1	2.1	2.2	2.2	2.3	2.3	2.4	2.4	2.5	m
150cm*	1.4	1.4	1.5	1.5	1.6	1.6	1.8	1.9	2.1	2.1	"	

Pantalon B	115cm*	2.2	2.2	2.2	2.2	2.3	2.3	2.3	2.5	2.5	2.6	m
150cm*	1.6	1.6	1.6	1.6	1.6	1.7	1.8	2.1	2.1	2.1	"	

Short C	115cm*	1.4	1.5	1.5	1.5	1.5	1.5	1.5	1.5	1.5	1.5	m
150cm*	1.0	1.0	1.0	1.0	1.1	1.1	1.1	1.1	1.1	1.1	1.1	"

MESURES DES VÊTEMENTS FINI (Motif et aisance de port compris)

A, B, C Hanches	95	98	100	103	107	112	117	122	127	132	cm
-----------------	----	----	-----	-----	-----	-----	-----	-----	-----	-----	----

Largeur, chaque jambe

Pantalon A, B	38	39	41	42	44	46	49	51	54	56	cm
Short C	55	57	59	61	64	67	70	73	76	79	"

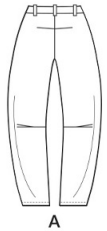
Longueur finie – côté, taille à l'ourlet

Pantalon A, B (repose 4cm dessous de la taille)	104	105	105	106	107	107	108	109	109	110	cm
---	-----	-----	-----	-----	-----	-----	-----	-----	-----	-----	----

Short C (repose 4cm dessous de la taille)

	48	48	49	50	50	51	51	52	53	53	cm
--	----	----	----	----	----	----	----	----	----	----	----

*avec sens **sans sens



A



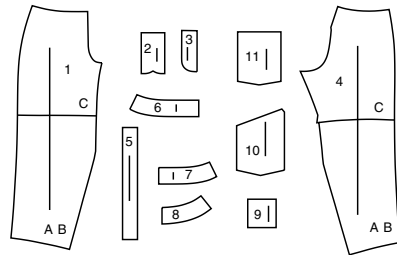
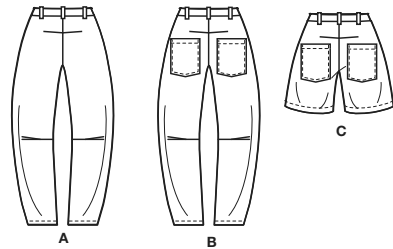
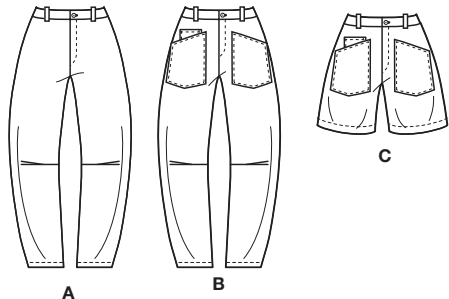
B



C

Simplicity®

Thank you for purchasing this Simplicity pattern. We made every effort to provide you with a high quality product.



- 1 Front-A,B,C
- 2 Right Fly-A,B,C
- 3 Left Fly Facing-A,B,C
- 4 Back-A,B,C
- 5 Carrier-A,B,C
- 6 Right Front Waistband-A,B,C
- 7 Left Front Waistband-A,B,C
- 8 Back Waistband-A,B,C
- 9 Inside Pocket-B,C
- 10 Front Pocket-B,C
- 11 Back Pocket-B,C

General Directions

The Pattern

- SYMBOLS**
- GRAIN LINE: Place on straight grain of fabric parallel to selvage
 - PLACE SOLID LINE on fold of fabric.
 - CENTER FRONT OR BACK of garment.
 - NOTCHES
 - DOTS
 - CUTTING LINE
 - LENGTHEN OR SHORTEN LINES

SEAM ALLOWANCE: 5/8" (1.5cm) unless otherwise stated is included but not printed on MULTI-SIZE PATTERNS. Mark your size with colored felt tip pen. See chart on tissue for how to use MULTI-SIZE PATTERNS.

ADJUST IF NEEDED
Make adjustments before placing pattern on fabric.

TO LENGTHEN:
Cut pattern between lengthen or shorten lines. Spread pattern evenly, the amount needed and tape to paper.

TO SHORTEN:
At lengthen or shorten lines, make an even pleat taking up amount needed. Tape in place.

When lengthen or shorten lines are not given, make adjustments at lower edge of pattern.

Cutting/Marking

BEFORE CUTTING:
PRESS pattern pieces with a warm dry iron. PRE-SHRINK fabric by pre-washing washables or steam-pressing non-washables.

CIRCLE your cutting layout.

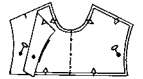
PIN pattern to fabric as shown in Cutting Layouts.

- FOR DOUBLE THICKNESS: Fold fabric with RIGHT sides together.
- FOR SINGLE THICKNESS: Place fabric RIGHT side up.
- FOR PILE, SHADED OR ONE WAY DESIGN FABRICS: Use "with nap" layouts

AFTER CUTTING:
Transfer markings to WRONG side of fabric before removing pattern. Use pin and chalk method or dressmaker's tracing paper and wheel.

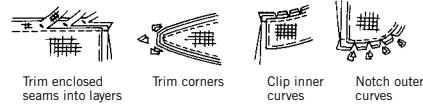
To Quick Mark:

- Snip edge of fabric to mark notches, ends of fold lines and center lines.
- Pin mark dots.



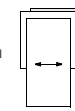
Sewing

- SEW garment following Sewing Directions.
- PIN or machine-baste seams matching notches.
- STITCH 5/8" (1.5 cm) seams unless otherwise stated.
- PRESS seams open unless otherwise indicated clipping when necessary so seams will lie flat.
- TRIM seams to reduce bulk, as shown below.



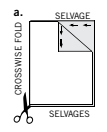
SPECIAL CUTTING NOTES

★ If layout shows a piece extending past fold, cut out all pieces except piece that extends.

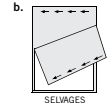


Open out fabric to single thickness. Cut extending piece on RIGHT side of fabric in position shown.

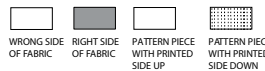
✱ Mark small arrows along both selvages indicating direction of nap or design. Fold fabric crosswise with RIGHT sides together, and cut along fold (a).



Turn one fabric layer around so arrows on both layers go in the same direction. Place RIGHT sides together (b).



Cutting Layouts

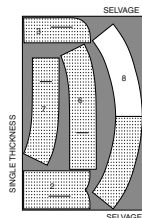


POSITION OF PATTERN PIECES MAY VARY SLIGHTLY ACCORDING TO YOUR PATTERN SIZE.

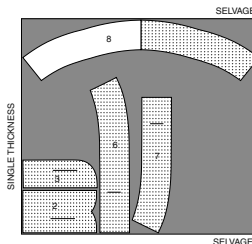
PANTS AND SHORTS SIT 1-1/2" (4CM) BELOW WAIST.

INTERFACING A,B,C

USE PIECES 2 3 6 7 8
20" (51CM) WITHOUT NAP
SIZES 4 6 8 10 12-14 16



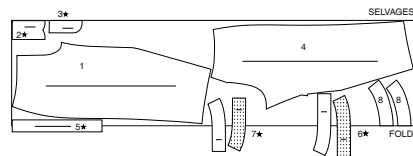
20" (51CM) WITHOUT NAP
SIZES 18 20 22



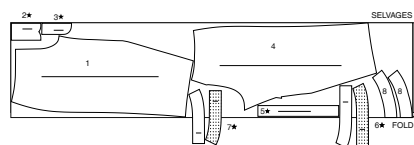
PANTS A

USE PIECES 1 2 3 4 5 6 7 8

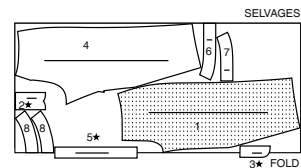
45" (115CM) WITH NAP
SIZES 4 6 8 10 12 14 16



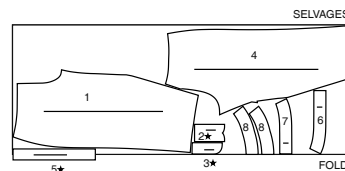
45" (115CM) WITH NAP
SIZES 18 20 22



60" (150CM) WITH NAP
SIZES 4 6 8 10 12 14 16



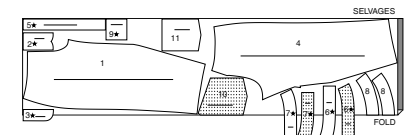
60" (150CM) WITH NAP
SIZES 18 20 22



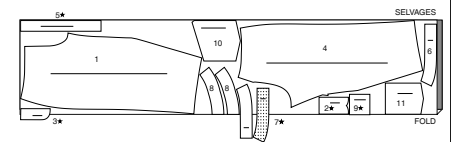
PANTS B

USE PIECES 1 2 3 4 5 6 7 8 9 10 11

45" (115CM) WITH NAP
SIZES 4 6 8 10 12 14 16



45" (115CM) WITH NAP
SIZES 18 20 22

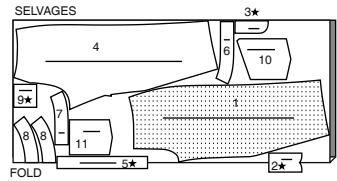


CUTTING LAYOUTS CONTINUED ON PAGE 2

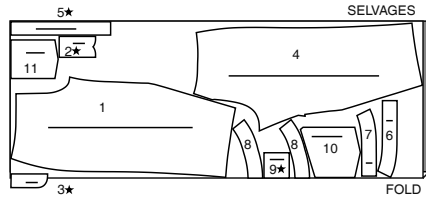
S3069

2 of 4

60" (150CM)
WITH NAP
SIZES 4 6 8 10 12 14 16



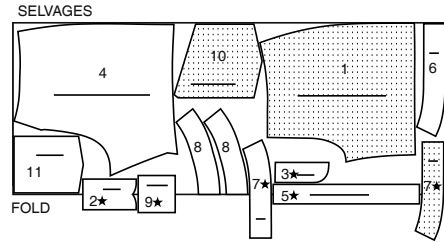
60" (150CM)
WITH NAP
SIZES 18 20 22



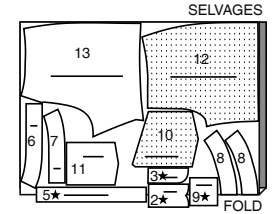
SHORTS C

USE PIECES 1 2 3 4 5 6 7 8 9 10 11

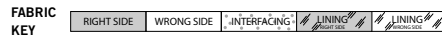
45" (115CM)
WITH NAP
ALL SIZES



60" (150CM)
WITH NAP
ALL SIZES



Sewing Directions



Sewing methods in **BOLD TYPE** have Sewing Tutorial Video available. Scan **QR CODE** to watch videos:

SEWING TUTORIALS



Build your skills viewing short, easy-to-follow videos at simplicity.com/sewingtutorials

- BELT LOOP/CARRIER** – See **Loops and Straps**: “how to sew belt loops” video.
- EDGESTITCH** – See **Machine Stitches**: “how to sew an edgestitch” video.
- FINISH** – See **Seams**: “how to finish seam allowances” video.
- FLAT DART** – See **Darts**: “sewing flat dart” video.
- FLY FRONT ZIPPER** – See **Zippers**: “sewing a fly front zipper” video.
- NARROW HEM** – See **Hems**: “sewing narrow hems” video.
- STAYSTITCH** – See **Machine Stitches**: “how to do stay stitching” video.
- STITCH IN THE DITCH** – See **Machine Stitches**: “how to stitch in the ditch” video.
- TACK** – See **Hand Stitching**: “how to tack” video.
- TOPSTITCH** – See **Machine Stitches**: “how to topstitch” video.
- TRIM SEAM** – See **Seams**: “how to trim, clip and layer seams” video.
- UNDERSTITCH** – See **Machine Stitches**: “how to understitch” video.

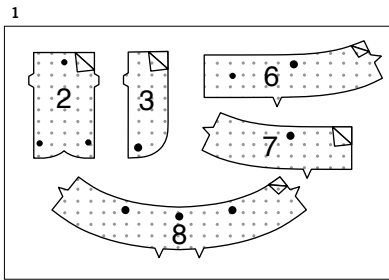
PATTERN PIECES WILL BE IDENTIFIED BY NUMBERS THE FIRST TIME THEY ARE USED.
STITCH 5/8" (1.5CM) SEAMS, WITH RIGHT SIDES TOGETHER UNLESS OTHERWISE STATED.

PANTS A, B, SHORTS C

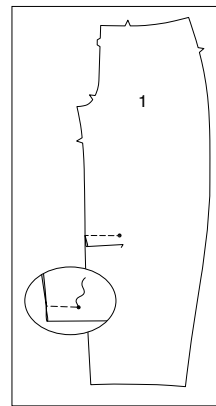
NOTE: *View A* will be shown unless otherwise indicated.

INTERFACING

1. Pin **INTERFACING** to wrong side of each matching **FABRIC** section. Fuse, following manufacturer’s instructions.



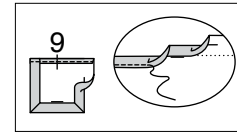
2



FRONT

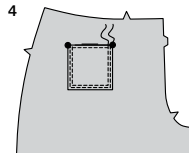
2. **VIEW A, B**- To make pleats in inner leg edge of **FRONT** (1), on **INSIDE**, bring broken lines together. Stitch along broken line ending at small dot. Press pleat down.

3



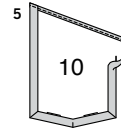
3. **VIEW B, C- NARROW HEM** upper edge of **INSIDE POCKET** (9). Press under seam allowance on outer edges of pocket.

4



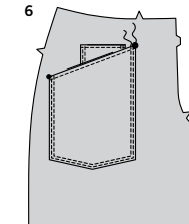
4. On **OUTSIDE**, pin pocket to **RIGHT** front matching large dots. **EDGESTITCH** and **TOPSTITCH** side and lower edges of pocket in place.

5



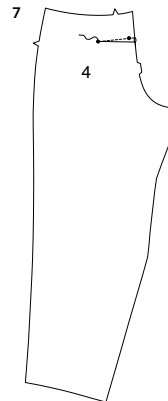
5. **NARROW HEM** upper edge of **FRONT POCKET** (10) sections. Press under seam allowance on outer edges of pocket.

6



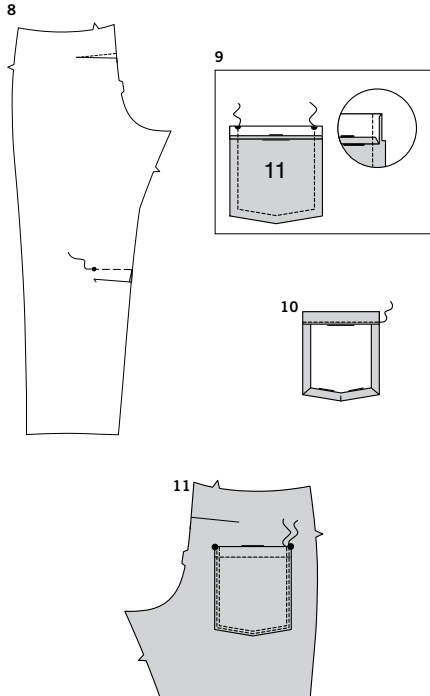
6. On **OUTSIDE**, pin pocket to front (over **INSIDE** pocket on **RIGHT** side), matching large and small dots. **EDGESTITCH** and **TOPSTITCH** side and lower edges of pocket in place.

7



BACK

7. Stitch **FLAT DARTS** in center back edge of **BACK** (4) sections. Press darts down.



8. VIEW A, B- To make pleats in inner leg edge of back sections, on **INSIDE**, bring broken lines together. Stitch along broken lines ending at small dot. Press pleat down.

9. VIEW B, C- Press under 1/4" (6mm) on upper edge of **BACK POCKET (11)**. Turn upper edge to **OUTSIDE** along fold line, forming facing. Stitch along seam line on raw edges. **TRIM SEAM** allowance in the facing area to 1/4" (6mm).

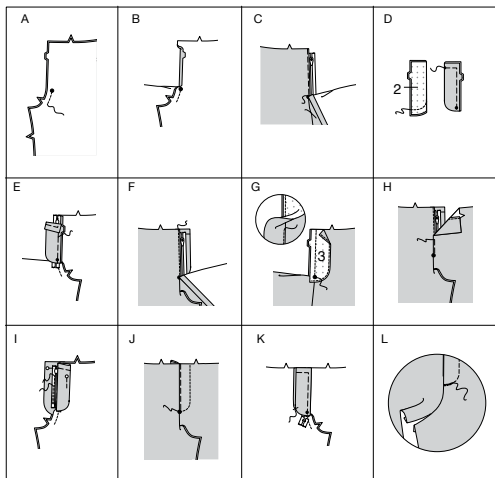
10. Turn corners **RIGHT** side out, turning facing to the **WRONG** side; press, pressing under raw edges along stitching. Stitch facing close to inner edge.

11. On **OUTSIDE**, pin pocket to back matching large dots. **EDGESTITCH** and **TOPSTITCH** side and lower edges of pocket in place.

FLY FRONT AND CROTCH SEAMS

NOTE: Use an adjustable zipper foot when stitching zipper. see Zippers: "sewing a fly front zipper" video for more assistance

12



12.A- Stitch front sections together at center front between large dot and notch.

B- Turn in **RIGHT** front opening edge along foldline; press.

C- Place closed zipper (face up) under **RIGHT** front opening edge, having pressed edge close to zipper teeth and zipper stop at small dot. Using a zipper foot, baste close to pressed edge.

D- With right sides together, fold **RIGHT FLY (2)** along foldline. Stitch lower edge. Trim. Turn. Press. Baste raw edges.

E- On inside, pin **RIGHT** fly to **RIGHT** front opening edge (over zipper), matching notches and small dots, having raw edges even. Baste along previous basting for zipper.

F- On outside, using a zipper foot, stitch close to pressed edge of front through all layers.

G-FINISH outer edge of **LEFT FLY FACING (3)**. Pin fly facing to left front opening edge, matching notches and large dots. Stitch, ending at large dot. Trim. **UNDERSTITCH** fly facing. Turn facing to inside.

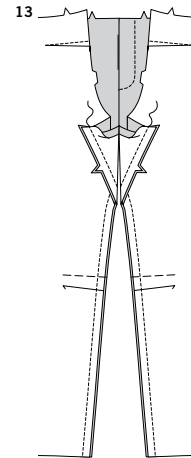
H- Lap **LEFT** front over **RIGHT**, matching centers. Baste close to edge through all thicknesses.

I- Pin **RIGHT** fly out of the way. Open out fly facing. Pin remaining zipper tape to fly facing, keeping **LEFT** front free. Using a zipper foot, stitch in place close to zipper teeth and along center of zipper tape.

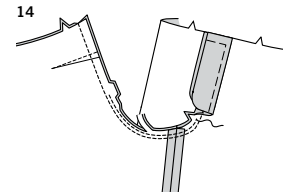
J- Turn facing down. On **OUTSIDE**, stitch **LEFT** front along stitching lines, keeping **RIGHT** fly free.

K- Turn **RIGHT** fly back in place. On **INSIDE**, hand **TACK** fly and facing together at lower edge, as shown. Trim away excess zipper tape even with lower edge of fly, if needed.

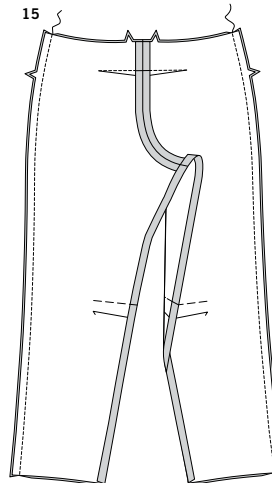
L- If desired, on outside, machine-stitch a bar **TACK** across lower end of fly through all thicknesses.



13. Stitch front and back together at inner leg edges.



14. Stitch remainder of crotch seam to notch in front. Stitch again 1/4" (1cm) away in seam allowance along curve, as shown. Trim close to second stitching.



SIDE SEAMS

15. Stitch back and front together at side seams.



WAISTBAND

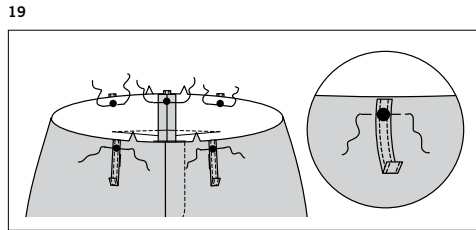
16. Fold **CARRIER (5)** in half, lengthwise with **WRONG** sides together. Press.



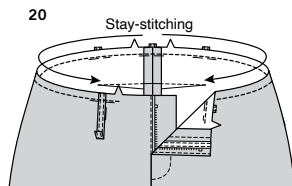
17. Open out long edges of carrier and turn them to **WRONG** side so that they meet at the crease. Press.



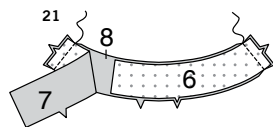
18. Fold carrier in half lengthwise, bringing pressed edges together. **EDGE STITCH** both long edges.
TIP: See **Loops and Straps: "how to sew belt loops"** video for more assistance.



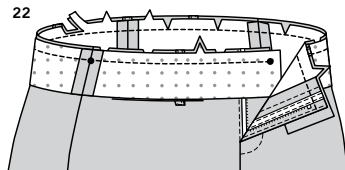
19. Cut five carriers, each measuring 3-3/4" (9.52cm). Press under 1/2" (1.3cm) on one end of carrier.
On **OUTSIDE**, pin carriers to upper edge of pants, centering ends over large dots, having raw edges even. Baste carriers in place.



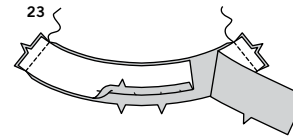
20. **STAYSTITCH** upper edge of pants, between notches.



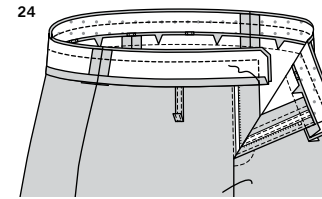
21. With **RIGHT** sides together, stitch interfaced **RIGHT FRONT WAISTBAND (6)** and **LEFT FRONT WAISTBAND (7)** to **BACK WAISTBAND (8)** at side seams.



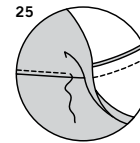
22. With **RIGHT** sides together, pin waistband to upper edge of pants matching centers, seams and small dot at **RIGHT** side. Clip pants to stay-stitching where necessary. Baste. Stitch. Trim. Press seam toward waistband.



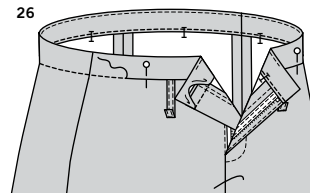
23. Stitch waistband facing sections together at sides, in same manner as waistband.
Turn in 1/2" (1.3cm) on lower edge of waistband facing, easing in fullness as necessary. Press.



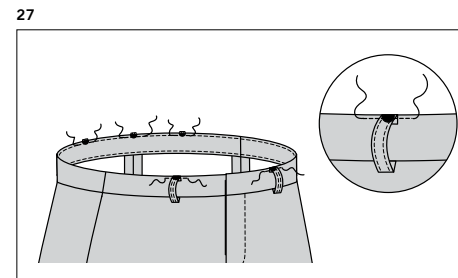
24. Pin facing to waistband. Stitch front opening and upper edges, as shown. **TRIM.**



25. **UNDERSTITCH** waistband facing as far as possible.

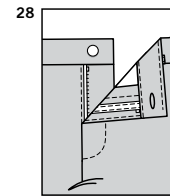


26. Turn waistband facing to **INSIDE**, pinning pressed edge of facing over seam, placing pins on **OUTSIDE**.
On **OUTSIDE**, **STITCH IN THE DITCH** or "groove" of waistband seam, catching in pressed edge on **INSIDE**.

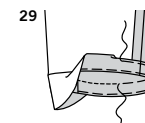


27. Turn carriers up, pinning free ends of carriers to waistband, centering over large dots, having edges even. **EDGE STITCH** pressed edge of carriers in place, through all thicknesses.

FINISHING



28. Make buttonhole in **LEFT** front waistband at markings.
Sew button to **RIGHT** front waistband at markings.



29. Turn up hem on lower edge of pants/shorts. Baste close to fold. Turn in 1/4" (6mm) on raw edge, easing in fullness if necessary. Baste hem in place close to upper edge. Press. **TOPSTITCH** hem along upper basting, as shown.



Congrats!

You've completed your sewing adventure

SHARE YOUR LOOK



Post your pattern and tag us using [#simplicitypatterns](#)
[@simplicity creative group](#)
[@simplicitymccallsuk](#)
[@simplicitymccallsaustralia](#)
for a chance to be featured on our social media.

Look for more PDF patterns at [simplicity.com](#) or for customers outside the U.S. and Canada visit [sewdirect.com](#) and [sewdirect.com.au](#)

Have a question or need help with your sewing project contact us:
[Simplicity.com](#) [Sewdirect.com](#) [Sewdirect.com.au](#)



Simplicity ©2024 a division of IG Design Group Americas Inc. • Atlanta, GA 30342 USA [www.thedesigngroup.com](#) • All Rights Reserved. [www.simplicity.com](#) • Made in the U.S.A. Fabriqué aux États-Unis.

To be used for individual private home use only and not for commercial or manufacturing purposes. • A usage privé seulement et non à des fins commerciales ou de production en série. • Para uso privado solamente, no se puede utilizar con propósitos de comercialización o de producción en serie.