

For customers outside of the U.S. and Canada

sewdirect.com sewdirect.com.au

Shop all the pattern brands you love @

Simplicity®.com

S3067

Simplicity®

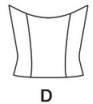
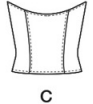
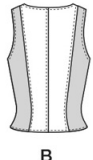
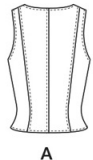


Designed and printed in USA.



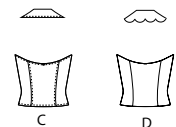
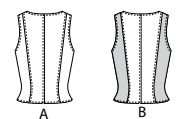
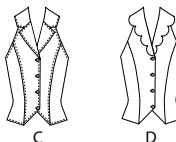
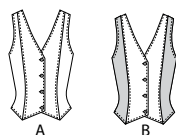
Average										
MISSES' TOPS WITH A/B,C,D CUP SIZES										
Suggested Fabrics: Denim, Linen, Suiting Fabrics, Twill. Lining: Lining Fabrics.										
Interfacing: Lightweight Fusible.										
Notions: A,B,C,D: Four 5/8" (1.5cm) buttons.										
Sizes	6	8	10	12	14	16	18	20	22	24
European	32	34	36	38	40	42	44	46	48	50
BODY MEASUREMENTS: Select pattern size based on body measurements										
Bust	30½	31½	32½	34	36	38	40	42	44	46 Ins.
Waist	23	24	25	26½	28	30	32	34	37	39 "
Hip-9" below waist	32½	33½	34½	36	38	40	42	44	46	48 "
Back-neck to waist	15½	15¾	16	16¼	16½	16¾	17	17¼	17½	17¾ "
Top A	45**	1%	1%	1%	1%	1%	1%	1%	1%	1% Yds.
	60**	1%	1%	1%	1%	1%	1%	1%	1%	1% "
Lining A,B	45***	¾	¾	¾	¾	¾	1	1	1	1
Interfacing - 20" - ¾ yd.										
Top B	45/60**	¾	¾	¾	¾	¾	1	1	1	1
Contrast B	45/60**	- ¾ yd.								
Top C	45**	1¼	1½	1¾	1¾	1¾	1¾	1¾	1¾	1¾ Yds.
	60**	1	1	1	1	1	1¼	1½	1¾	1¾ "
Interfacing - 20" - 1¼ yds.										
Lining C,D	45***	¾	¾	¾	¾	¾	¾	¾	¾	¾ Yd.
Top D	45**	1%	1%	1%	1%	1%	1%	1%	1%	1% Yds.
	60**	1%	1%	1%	1%	1%	1%	1%	1%	1% "
Interfacing - 20" - 1¼ yds.										
FINISHED GARMENT MEASUREMENTS (Includes Design and Wearing Ease)										
A/B Bust Cup	34	35	36	37½	39½	41½	43½	45½	47½	49½ Ins.
C Bust Cup	34½	35½	36½	38	40	42	44	46	48	50 "
D Bust Cup	35	36	37	38½	40½	42½	44½	46½	48½	50½ "
A,B,C,D Waist	27½	28½	29½	31	33	35	37	39	41	43 "
Finished back length from base of neck										
Top A,B,C,D	18	18¼	18½	18¾	19	19¼	19½	19¾	20	20½ Ins.
*with nap **without nap										

Moins Facile												
HAUTS AVEC TAILLES DE BONNET A/B,C,D POUR JEUNES FEMMES												
Tissus Conseillés: Denim, Toile de lin, Tissus pour costumes, Twill. Doublure: Tissus à doublure. Entoilage: Thermocollant léger.												
Mercerie: A,B,C,D: 4 boutons de 1.5cm.												
Tailles	6	8	10	12	14	16	18	20	22	24		
Françaises	34	36	38	40	42	44	46	48	50	52		
Européen	32	34	36	38	40	42	44	46	48	50		
MESURES DU CORPS: Choisissez la taille du patron basée sur les mesures du corps												
Poitrine	78	80	83	87	92	97	102	107	112	117	cm	
Taille	58	61	64	67	71	76	81	87	94	99	"	
Hanches (23cm au-dessous de la taille)												
	83	85	88	92	97	102	107	112	117	122	cm	
Dos du cou à la taille	39.5	40	40.5	41.5	42	42.5	43	44	44	44.5	"	
Haut A	115cm*	1.3	1.3	1.3	1.3	1.3	1.3	1.4	1.4	1.4	m	
	150cm*	1.1	1.3	1.3	1.3	1.3	1.3	1.3	1.3	1.3	"	
Doublure A,B	115cm*	0.7	0.7	0.7	0.7	0.8	1.0	1.0	1.0	1.0	m	
Entoilage - 51cm - 0.8m												
Haut B	115/150cm*	0.7	0.7	0.7	0.8	0.8	0.8	0.9	1.1	1.1	m	
Contraste B - 115/150cm* - 0.7m												
Haut C	115cm*	1.1	1.1	1.1	1.1	1.1	1.1	1.1	1.3	1.4	1.5	m
	150cm*	0.9	0.9	0.9	0.9	0.9	1.0	1.1	1.1	1.1	1.1	"
Entoilage - 51cm - 1.1m												
Doublure C,D	115cm*	0.6	0.6	0.6	0.6	0.6	0.6	0.6	0.6	0.6	m	
Haut D	115cm*	1.1	1.3	1.3	1.4	1.5	1.5	1.5	1.5	1.5	1.5	m
	150cm*	0.9	1.0	1.0	1.0	1.0	1.0	1.1	1.1	1.1	1.1	"
Entoilage - 51cm - 1.4m												
MESURES DES VÊTEMENTS FINI (Motif et aisance de port compris)												
A/B Poitrine-Bonnet	86	89	91	95	100	105	110	116	121	126	cm	
C Poitrine-Bonnet	88	90	93	97	102	107	112	117	122	127	"	
D Poitrine-Bonnet	89	91	94	98	103	108	113	118	123	128	"	
A,B,C,D Taille	70	72	75	79	84	89	94	99	104	109	"	
Longueur finie - dos, votre nuque à l'ourlet												
Haut A,B,C,D	46	46	47	48	48	49	50	50	51	51	cm	
*avec sens **sans sens												

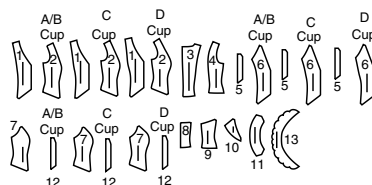


Simplicity®

Thank you for purchasing this Simplicity pattern.
We made every effort to provide you with a high quality product.



13 PIECES



- 1A/B Front-A,B (A/B Cup)
1C Front-A,B (C Cup)
1D Front-A,B (D Cup)
2A/B Side Front-A,B (A/B Cup)
2C Side Front-A,B (C Cup)
2D Side Front-A,B (D Cup)
3 Back-A,B
4 Side Back-A,B
5A/B Guide for Buttonholes-A,B (A/B Cup)
5C Guide for Buttonholes-A,B (C Cup)
5D Guide for Buttonholes-A,B (D Cup)
6A/B Front-C,D (A/B Cup)
6C Front-C,D (C Cup)
6D Front-C,D (D Cup)
7A/B Side Front-C,D (A/B Cup)
7C Side Front-C,D (C Cup)
7D Side Front-C,D (D Cup)
8 Back-C,D
9 Side Back-C,D
10 Lapel-C
11 Collar-C
12 A/B Guide for Buttonholes-C,D (A/B Cup)
12C Guide for Buttonholes-C,D (C Cup)
12D Guide for Buttonholes-C,D (D Cup)
13 Collar-D



www.simplicity.com



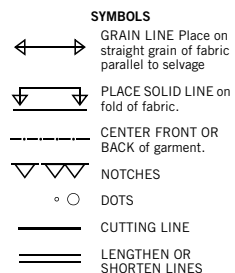
info@simplicity.com



1-888-588-2700

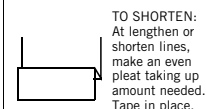
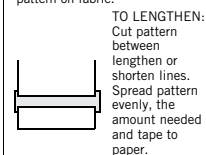
General Directions

The Pattern



SEAM ALLOWANCE: 5/8" (1.5cm) unless otherwise stated is included but not printed on MULTI-SIZE PATTERNS. Mark your size with colored felt tip pen. See chart on tissue for how to use MULTI-SIZE PATTERNS.

ADJUST IF NEEDED
Make adjustments before placing pattern on fabric.



When lengthen or shorten lines are not given, make adjustments at lower edge of pattern.

Cutting/Marking

BEFORE CUTTING:

PRESS pattern pieces with a warm dry iron. PRE-SHRINK fabric by pre-washing washables or steam-pressing non-washables.

CIRCLE your cutting layout.

PIN pattern to fabric as shown in Cutting Layouts.

• FOR DOUBLE THICKNESS: Fold fabric with RIGHT sides together.

• FOR SINGLE THICKNESS: Place fabric RIGHT side up.

• FOR PILE, SHADED OR ONE WAY DESIGN FABRICS: Use "with nap" layouts

AFTER CUTTING:

Transfer markings to WRONG side of fabric before removing pattern. Use pin and chalk method or dressmaker's tracing paper and wheel.

To Quick Mark:

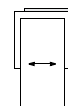
• Snip edge of fabric to mark notches, ends of fold lines and center lines.

• Pin mark dots.

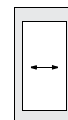


SPECIAL CUTTING NOTES

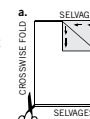
★ If layout shows a piece extending past fold, cut out all pieces except piece that extends.



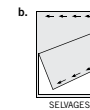
Open out fabric to single thickness. Cut extending piece on RIGHT side of fabric in position shown.



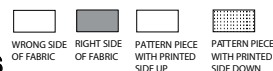
✱ Mark small arrows along both selvages indicating direction of nap or design. Fold fabric crosswise with RIGHT sides together, and cut along fold (a).



Turn one fabric layer around so arrows on both layers go in the same direction. Place RIGHT sides together (b).



Cutting Layouts



POSITION OF PATTERN PIECES MAY VARY SLIGHTLY ACCORDING TO YOUR PATTERN SIZE

THE FIT THAT MAKES THE FASHION....HOW TO DETERMINE YOUR BUST CUP SIZE

No two people have exactly the same shape even though they may take the same size. If you are an A/B, C or D cup, you can now customize the fit of your garment without having to make time consuming adjustments. Simplicity has done this for you by including separate front and side front pattern pieces. Choose the front and side front pattern for your particular cup size.

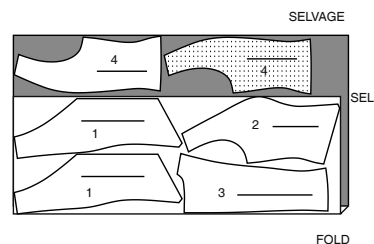
To check your cup size, take your bust (A) and high bust (B) measurements and record them.

- If your bust is 1/2" to 1" (1.3cm-2.5cm) larger than your high bust measurement, you are an A cup.
- If your bust is 1" to 2" (2.5cm-5cm) larger than your high bust measurement, you are a B cup.
FOR VIEWS A, B - Use front pattern 1-A/B, side front pattern 2-A/B and guide for buttonholes pattern 5-A/B.
FOR VIEWS CD - Use front pattern 6-A/B, side front pattern 7-A/B and guide for buttonholes pattern 12-A/B.
- If your bust is 2" to 3" (5cm-7.5cm) larger than your high bust measurement, you are a C cup.
FOR VIEWS A, B - Use front pattern 1-C, side front pattern 2-C and guide for buttonholes pattern 5-C.
FOR VIEWS C,D - Use front pattern 6-C and side front pattern 7-C and guide for buttonholes pattern 12-C.
- If your bust is 3" to 4" (7.5cm-10cm) larger than your high bust measurement, you are a D cup.
FOR VIEWS A, B - Use front pattern 1-D, side front pattern 2-D and guide for buttonholes pattern 5-D.
FOR VIEWS C, D - Use front pattern 6-D, side front pattern 7-D and guide for buttonholes pattern 12-D.

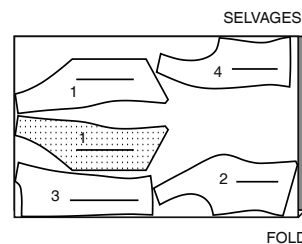
TOP A

USE PIECES 1 2 3 4

45" (115CM)
WITH NAP
ALL SIZES



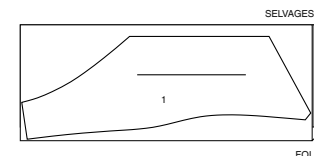
60" (150CM)
WITH NAP
ALL SIZES



INTERFACING A,B

USE PIECES 1

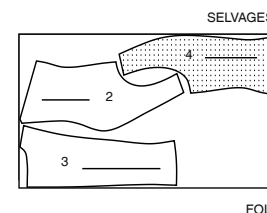
20" (54CM)
ALL SIZES



LINING A,B

USE PIECES 2 3 4

45" (115CM)
WITHOUT NAP
ALL SIZES

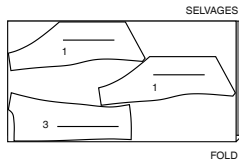


S3067

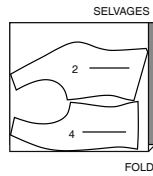
2 of 4

TOP B

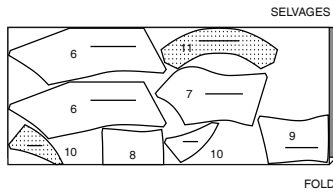
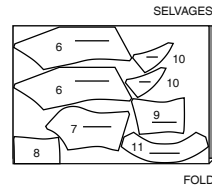
USE PIECES 1 3

45"/60 (115CM/150CM)
WITH NAP
ALL SIZES**CONTRAST B (SIDES)**

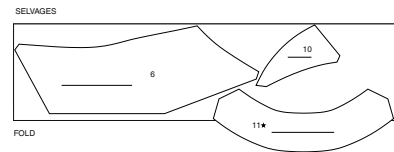
USE PIECES 2 4

45"/60 (115CM/150CM)
WITH NAP
ALL SIZES**TOP C**

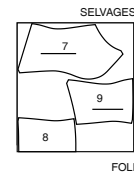
USE PIECES 6 7 8 9 10 11

45" (115CM)
WITH NAP
ALL SIZES60" (150CM)
WITH NAP
ALL SIZES**INTERFACING C**

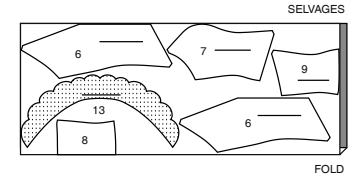
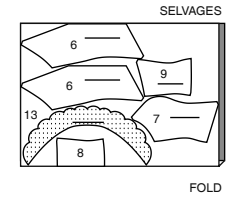
USE PIECES 6 10 11

20" (54CM)
ALL SIZES**LINING C,D**

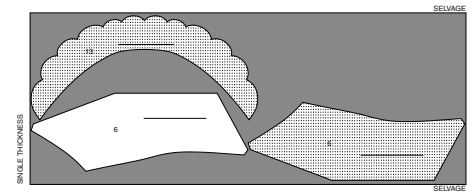
USE PIECES 7 8 9

45" (115CM)
WITHOUT NAP
ALL SIZES**TOP D**

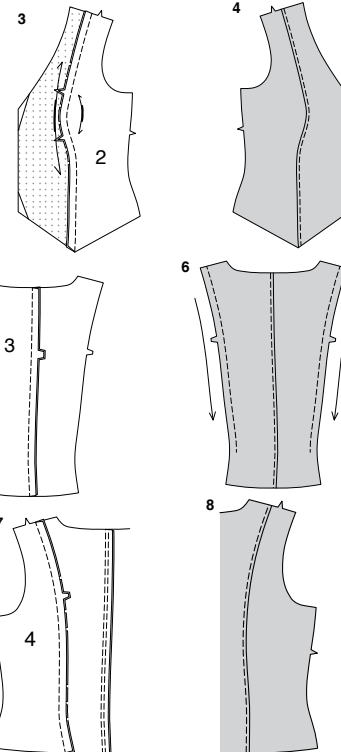
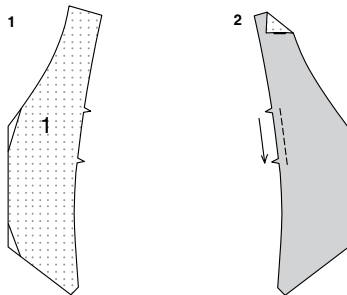
USE PIECES 6 7 8 9 13

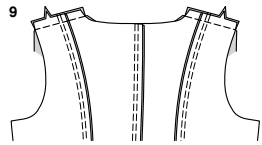
45" (115CM)
WITH NAP
ALL SIZES60" (150CM)
WITH NAP
ALL SIZES**INTERFACING D**

USE PIECES 6 13

20" (54CM)
ALL SIZES

SEWING TUTORIALS

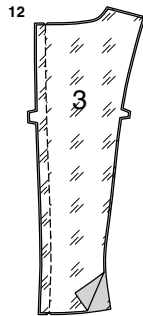
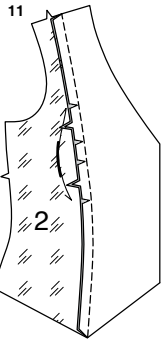
Build your skills viewing short, easy-to-follow videos at
simplicity.com/sewingtutorials**Sewing Directions****FABRIC KEY**Sewing methods in **BOLD TYPE** have Sewing Tutorial Video available.
Scan QR CODE to watch videos:**REINFORCE** - See Machine Stitches: "how to reinforce" video.**SLIPSTITCH** - See Hand Stitching: "how to slipstitch" video.**STAYSTITCH** - See Machine Stitches: "how to do stay-stitching" video.**TOPSTITCH** - See Machine Stitches: "how to topstitch" video.**PATTERN PIECES WILL BE IDENTIFIED BY NUMBERS THE FIRST TIME THEY ARE USED.****STITCH SEAMS WITH RIGHT SIDES TOGETHER UNLESS OTHERWISE STATED.****TOP A, B****NOTE:** Under each sub-heading, the first view will be illustrated, unless otherwise indicated.**FRONT****1.** Trim corners of INTERFACING, as shown. Fuse interfacing to **WRONG** side of two matching **FRONT (1)** FABRIC sections, following manufacturer's instructions. (Uninterfaced front sections will be used as facing.)**2. STAYSTITCH** side front edge of each interfaced front section between notches.**3.** Pin **SIDE FRONT (2)** to front at side front edge, matching notches, clipping front where necessary. Stitch. Press seams toward front.**4. TOPSTITCH** front along side front seam.**BACK****5.** Stitch center seam in **BACK (3)** sections. Press seams toward left back.**6. TOPSTITCH** left back along center back seam. **STAYSTITCH** side back edges of back above waist.**7.** Pin **SIDE BACK (4)** sections to back at side back edges, clipping back where necessary. Stitch. Press seams toward center back.**8. TOPSTITCH** back along side back seams.



9. Stitch back to front at shoulders.

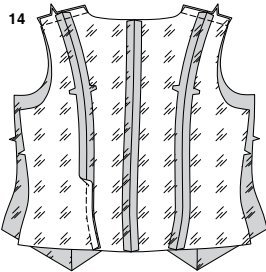
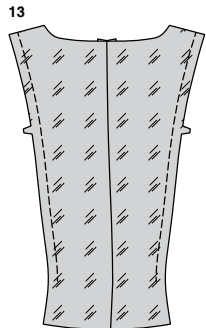
FACING AND LINING

10. **STAYSTITCH** side front edge of each front FACING (1) section between notches.



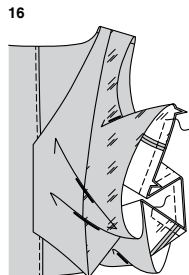
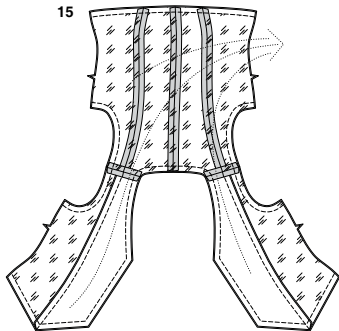
11. Pin side front LINING (2) to front facing at side front edge, matching notches, clipping front facing where necessary. Stitch; press seams toward lining.

12. Stitch center seam in back LINING (3) sections.



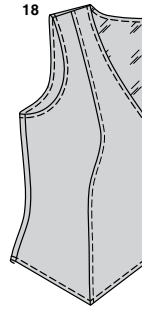
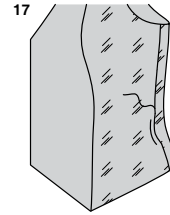
13. **STAYSTITCH** side back edges of back lining above waist.

14. Pin side back LINING (4) sections to back at side back edges, clipping back lining where necessary. Stitch. Stitch back lining to front facing and lining at shoulders.



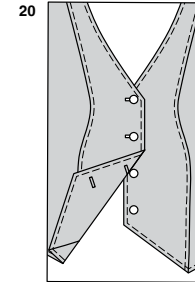
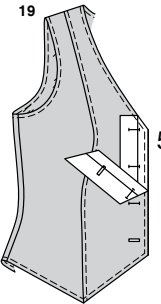
15. Pin lining to top, RIGHT sides together, matching centers and seams. Stitch neck, front and lower edges. Stitch armhole edges; trim seams.

16. Turn lining to inside by pulling front sections through shoulders and both out one side opening in back; press. Starting 2" (5cm) above armhole seam and ending 2" (5cm) below seam at lower edge, stitch back to front sections at sides and lining edges together in one continuous seam, as shown.



17. Turn in seam allowances on side edges of lining. **SLIPSTITCH** edges together over seam.

18. **TOPSTITCH** front, neck and lower edges. **TOPSTITCH** armhole edges.



BUTTONHOLES AND BUTTONS

19. Place GUIDE FOR BUTTONHOLES (5) on right front, having edges of tissue even with finished edges of top, matching center fronts. Transfer markings. Make buttonholes at markings.

20. Lap opening edges, matching centers. Using buttonholes as guides, make button markings on left front. Sew buttons at markings.

TOP C, D

NOTE: Under each sub-heading, the first view will be illustrated, unless otherwise indicated.

INTERFACING

1. Trim corners of INTERFACING, as shown. Fuse INTERFACING to wrong side of each matching FABRIC section, following manufacturer's directions.

FRONT AND BACK

2. **STAYSTITCH** side front edge of each interfaced FRONT (6) section between notches. (Uninterfaced front sections will be used as facing.)

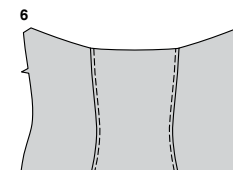
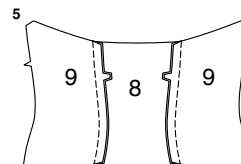
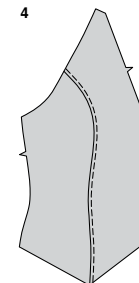
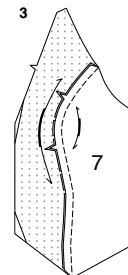
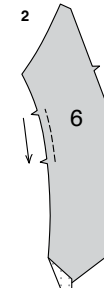
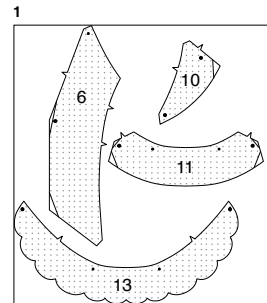
3. Pin SIDE FRONT (7) to front at side front edge, matching notches, clipping front where necessary. Stitch. Press seams toward front.

4. **FOR VIEW C:** **TOPSTITCH** front along side front seam.

BACK

5. Stitch SIDE BACK (9) sections to BACK (8) at side back seams. Press seams toward center back.

6. **FOR VIEW C:** **TOPSTITCH** back along side back seams.



COLLAR AND LAPEL C

COLLAR

7. REINFORCE neck and side edges of each COLLAR (11) section through small and large dots. Clip to each dot.

8. Pin collar sections, RIGHT sides together, matching centers and dots. Stitch neck edge between small dots. Trim seam to 3/8" (1cm).

9. Stitch sides and lower edge of collar between large dots. Trim seams; cut corners.

10. Turn collar RIGHT side out; press. Baste raw edges together. **TOPSTITCH** finished sides and lower edge of collar.

LAPEL

11. REINFORCE side edge of each interfaced LAPEL (10) section through dot; clip to dot. (Uninterfaced lapel sections will be used as facings.) REINFORCE and clip side edge of each lapel FACING (10) section.

12. For each lapel, pin one lapel facing section to one lapel section, RIGHT sides together, matching dots. Stitch from clip to lower edge; trim seams.

13. Turn RIGHT side out; press.

14. With RIGHT sides together, pin lapel facing to facing side of collar, matching notches and dots, keeping lapel free; baste.

15. Pin lapel to collar, matching notches and dots. Stitch; trim seams.

16. Turn lapel RIGHT side out; press. Baste raw edges together. **TOPSTITCH** seamed edge of lapel, continuing stitching along finished edge.

17. Pin interfaced side of collar and lapel to front edges, matching small and large dots.

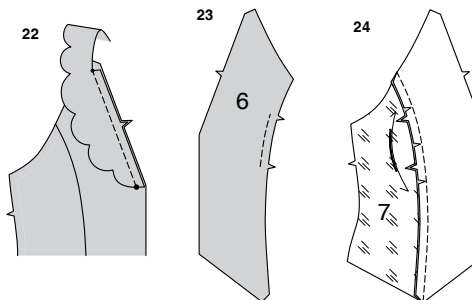
COLLAR D

18. REINFORCE neck edge of each COLLAR (13) section through small dots; clip to dots.

19. With RIGHT sides together, pin collar sections, matching centers, dots and stitching lines. Stitch notched edge between small dots; trim seam.

20. Stitch scalloped edge in a 3/8" (1cm) seam, continuing along stitching lines; clip to inward corners. Trim seams to 1/4" (6mm); clip curves.

21. Turn collar RIGHT side out; press. Baste raw edges together.



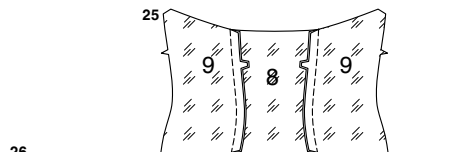
22. Pin uninterfaced side of collar to front edges, matching small and large dots; baste.

FACING AND LINING

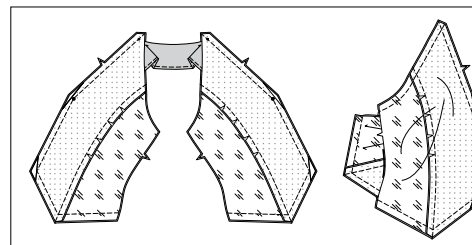
23. STAYSTITCH side front edge of each front FACING (6) section between notches.

24. Pin side front LINING (7) to front facing at side front edge, matching notches, clipping front facing where necessary. Stitch. Press seams toward lining.

25. Stitch side back LINING (9) sections to back LINING (8) at side back seams. Press seams toward center back.

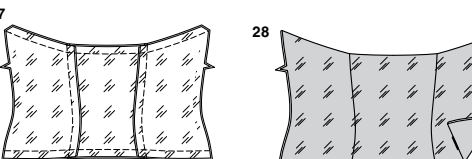


26. Pin front facing and lining to top front, RIGHT sides together, matching centers and seams. Stitch neck, front and lower edges. Stitch front armhole seam of right front, being careful not to catch in finished edge of collar. Trim seams. Stitch front armhole seam of left front in same manner.



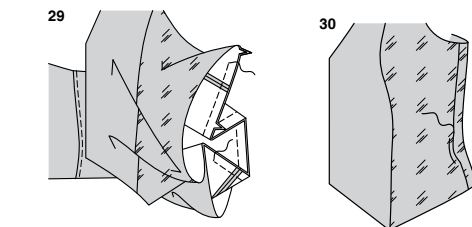
27. Pin back lining to top back, RIGHT sides together, matching centers and seams. Stitch upper and lower edges; trim seams.

28. Turn lining to inside; press.



29. Starting 2" (5cm) above from armhole seam and ending 2" (5cm) below seam at lower edge, stitch back to front sections at sides and lining edges together in one continuous seam, as shown.

30. Turn in seam allowances on side edges of lining. SLIPSTITCH edges together over seam.

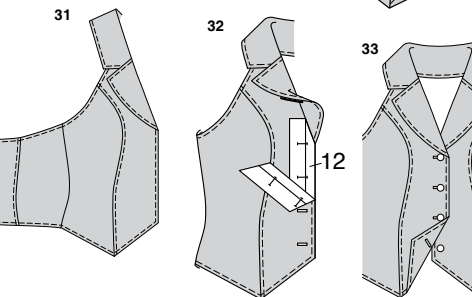


31. For View C: TOPSTITCH front and lower edges. TOPSTITCH armhole and upper back edges.

BUTTONHOLES AND BUTTONS

32. Place GUIDE FOR BUTTONHOLES (12) on right front, having edges of tissue even with finished edges of top, matching center fronts. Transfer markings. Make buttonholes at markings.

33. Lap opening edges, matching centers. Using buttonholes as guides, make button markings on left front. Sew buttons at markings.





Congrats!

You've completed your sewing adventure

SHARE YOUR LOOK



Post your pattern and tag us using [#simplicitypatterns](#)
[@simplicity_creative_group](#)
[@simplicitymccallsuk](#)
[@simplicitymccallsaustralia](#)

for a chance to be featured on our social media.

Look for more PDF patterns at [simplicity.com](#) or for customers outside the U.S. and Canada visit [sewdirect.com](#) and [sewdirect.com.au](#)

Have a question or need help with your sewing project contact us:

[Simplicity.com](#)

[Sewdirect.com](#)

[Sewdirect.com.au](#)



Simplicity ©2024 a division of IG Design Group Americas Inc. • Atlanta, GA 30342 USA [www.thedesigngroup.com](#) • All Rights Reserved. [www.simplicity.com](#) • Made in the U.S.A. Fabriqué aux États-Unis.

To be used for individual private home use only and not for commercial or manufacturing purposes. • A usage privé seulement et non à des fins commerciales ou de production en série. • Para uso privado solamente, no se puede utilizar con propósitos de comercialización o de producción en serie.