

For customers outside of the U.S. and Canada

sewdirect.com      sewdirect.com.au

Shop all the pattern brands you love @  
**Simplicity®.com**

S3065

**Simplicity®**



A



B



C

Designed and printed in USA.



Average											
MISSES' AND WOMEN'S DRESSES WITH TIE BELT											
Suggested Fabrics: A,B: Cotton Blends, Denim, Linen, Twill. C: Lengthwise Stripes. Interfacing: Lightweight Fusible.											
Notions: A,B,C: ¾" (1.5cm) buttons: Eleven for A, Thirteen for B, Eight for C.											
MISSES' SIZES	10	12	14	16	18						
EUROPEAN	36	38	40	42	44						
BODY MEASUREMENTS: Select pattern size based on body measurements											
Bust	32½	34	36	38	40	Ins.					
Waist	25	26½	28	30	32	"					
Hip-9" below waist	34½	36	38	40	42	"					
Back-neck to waist	16	16¼	16½	16¾	17	"					
Dress and Tie Belt A	45**	4%	4%	4%	4%	Yds.					
Interfacing	20"	1½ yd.									
Dress and Tie Belt B	45**	3%	3%	4	4	Yds.					
Interfacing	20"	1½ yds.									
Dress and Tie Belt C	3	3	3%	3%	3¼	Yds.					
Interfacing	20"	1¼ yds.									
WOMEN'S SIZES	20W	22W	24W	26W	28W	30W	32W	34W	36W	38W	
EUROPEAN	46	48	50	52	54	56	58	60	62	64	
BODY MEASUREMENTS: Select pattern size based on body measurements											
Bust	42	44	46	48	50	52	54	56	58	60	Ins.
Waist	35	37	39	41½	44	46½	49	51½	53	54½	"
Hip-9" below waist	44	46	48	50	52	54	56	58	60	62	"
Back-neck to waist	17¼	17½	17¾	17¾	17¾	17¾	18	18¼	18¼	18¾	"
Dress and Tie Belt A	45**	5¼	5¼	5¼	5%	5%	5%	5%	6	6	Yds.
Interfacing	20"	1½ yds.									
Dress and Tie Belt B	45**	4%	4%	4%	4%	5¼	5¼	5¼	5%	5%	Yds.
Interfacing	20"	1½ yds.									
Dress and Tie Belt C	45**	3%	4	4	4%	4%	4%	4%	4¼	4¼	Yds.
Interfacing	20"	1½ yds.									
NOTE: Please refer to the sewing instructions for 60** wide fabric yardages and FINISHED GARMENT MEASUREMENTS.											
*with nap    **without nap											

Moins Facile											
ROBES AVEC CEINTURE À NOUER POUR JEUNES FEMMES ET FEMMES											
Tissus Conseillés: Cottonnades, Denim, Toile de lin, Twill. C: Tissu à rayures dans le sens de la longueur. Entoilage: Thermocollant léger.											
Mercerie: A,B,C: Boutons de 1.5cm: 11 pour A, 13 pour B, 8 pour C.											
TAILLES (J. FEMMES)	10	12	14	16	18						
FRANÇAISES	38	40	42	44	46						
EUROPÉEN	36	38	40	42	44						
MESURES DU CORPS: Choisissez la taille du patron basée sur les mesures du corps											
Poitrine	83	87	92	97	102	cm					
Taille	64	67	71	76	81	"					
Hanches (23cm au-dessous de la taille)	88	92	97	102	107	cm					
Dos du cou à la taille	40.5	41.5	42	42.5	43	"					
Robe et ceinture A	115cm*	4.0	4.0	4.0	4.1	m					
Entoilage	51cm - 1.6m										
Robe et ceinture B	115cm*	3.5	3.5	3.5	3.7	m					
Entoilage	51cm - 1.4m										
Robe et ceinture C	115cm*	2.7	2.7	2.9	2.9	3.0	m				
Entoilage	51cm - 1.1m										
TAILLES (FEMMES)	20W	22W	24W	26W	28W	30W	32W	34W	36W	38W	
FRANÇAISES	48	50	52	54	56	58	60	62	64	66	
EUROPÉEN	46	48	50	52	54	56	58	60	62	64	
MESURES DU CORPS: Choisissez la taille du patron basée sur les mesures du corps											
Poitrine	107	112	117	122	127	132	137	142	147	152	cm
Taille	89	94	99	105	112	118	124	130	134	138	"
Hanches (23cm au-dessous de la taille)	112	117	122	127	132	137	142	147	152	157	cm
Dos du cou à la taille	44	44	44.5	45	45	45.5	46	46	46.5	47	"
Robe et ceinture A	115cm*	4.8	4.8	4.8	4.8	4.9	5.4	5.4	5.5	5.5	m
Entoilage	51cm - 1.7m										
Robe et ceinture B	115cm*	4.1	4.2	4.2	4.2	4.3	4.8	4.8	4.8	4.9	m
Entoilage	51cm - 1.4m										
Robe et ceinture C	115cm*	3.5	3.7	3.7	3.7	3.8	3.8	3.8	3.9	3.9	m
Entoilage	51cm - 1.3m										
NOTE: S'il vous plaît, reportez-vous aux instructions de couture pour mesures métriques pour tissus de 150 cm de large et les MESURES DU VÊTEMENTS FINI.											
*avec sens    **sans sens											



A



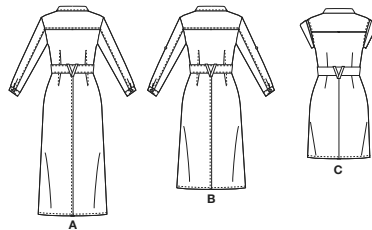
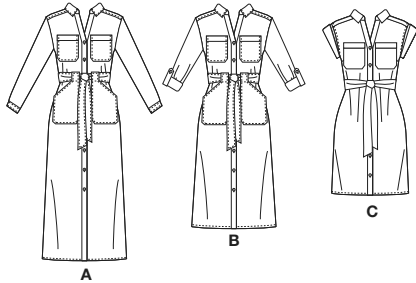
B



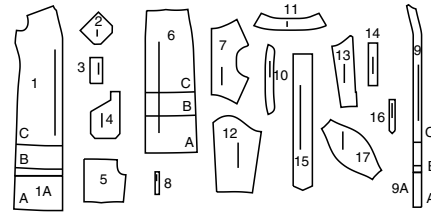
C

# Simplicity®

Thank you for purchasing this Simplicity pattern.  
We made every effort to provide you with a high quality product.



17 PIECES



1(1A) Front-A,B,C  
2 Pocket-A,B,C  
3 Pocket Band-A,B,C  
4 Lower Pocket-A,B  
5 Bodice Back-A,B,C  
6 Skirt Back-A,B,C  
7 Yoke Back-A,B,C  
8 Loop-A,B,C  
9(9A) Placket-A,B,C  
10 Collar Band-A,B,C  
11 Collar-A,B,C  
12 Upper Sleeve-A,B  
13 Under Sleeve-A,B  
14 Cuff-A,B  
15 Tie Belt-A,B,C  
16 Sleeve Tab-B  
17 Sleeve-C



www.simplicity.com



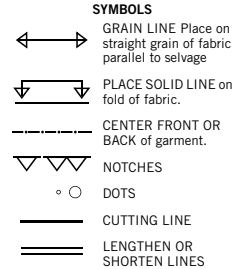
info@simplicity.com



1-888-588-2700

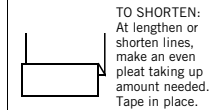
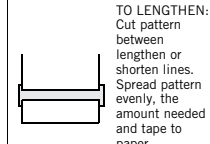
## General Directions

### The Pattern



**SEAM ALLOWANCE:** 5/8" (1.5cm) unless otherwise stated is included but not printed on MULTI-SIZE PATTERNS. Mark your size with colored felt tip pen. See chart on tissue for how to use MULTI-SIZE PATTERNS.

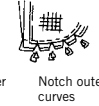
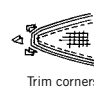
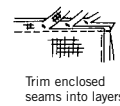
**ADJUST IF NEEDED**  
Make adjustments before placing pattern on fabric.



When lengthen or shorten lines are not given, make adjustments at lower edge of pattern.

### Sewing

- SEW garment following **Sewing Directions**.
- PIN or machine-baste seams matching notches.
- STITCH 5/8" (1.5 cm) seams unless otherwise stated.
- PRESS seams open unless otherwise indicated clipping when necessary so seams will lie flat.
- TRIM seams to reduce bulk, as shown below.



### Cutting/Marking

#### BEFORE CUTTING:

PRESS pattern pieces with a warm dry iron. PRE-SHRINK fabric by pre-washing washables or steam-pressing non-washables.

CIRCLE your cutting layout.

PIN pattern to fabric as shown in Cutting Layouts.

• FOR DOUBLE THICKNESS: Fold fabric with RIGHT sides together.

• FOR SINGLE THICKNESS: Place fabric RIGHT side up.

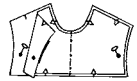
• FOR PILE, SHADED OR ONE WAY DESIGN FABRICS: Use "with nap" layouts

#### AFTER CUTTING:

Transfer markings to WRONG side of fabric before removing pattern. Use pin and chalk method or dressmaker's tracing paper and wheel.

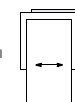
#### To Quick Mark:

- Snip edge of fabric to mark notches, ends of fold lines and center lines.
- Pin mark dots.

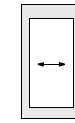


### SPECIAL CUTTING NOTES

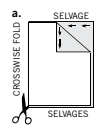
★ If layout shows a piece extending past fold, cut out all pieces except piece that extends.



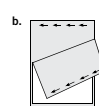
Open out fabric to single thickness. Cut extending piece on RIGHT side of fabric in position shown.



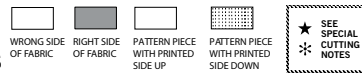
✱ Mark small arrows along both selvages indicating direction of nap or design. Fold fabric crosswise with RIGHT sides together, and cut along fold (a).



Turn one fabric layer around so arrows on both layers go in the same direction. Place RIGHT sides together (b).



## Cutting Layouts



POSITION OF PATTERN PIECES MAY VARY SLIGHTLY ACCORDING TO YOUR PATTERN SIZE

NOTE: BEFORE CUTTING FABRIC, JOIN PIECES IN PARENTHESIS TO CORRESPONDING PIECES FOLLOWING INSTRUCTIONS ON TISSUE PATTERN.

### DRESS AND BELT A

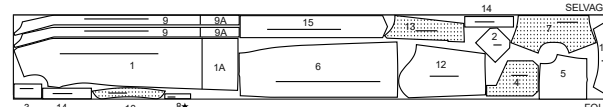
USE PIECES 1(1A) 2 3 4 5 6 7 8 9(9A) 10 11 12 13 14 15

45" (115CM)

WITH NAP

SIZES 10 12

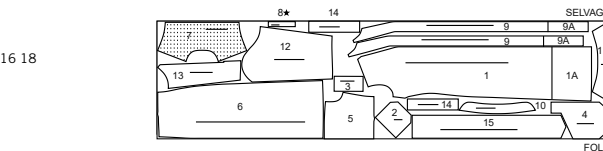
14 16 18



60" (150CM)

WITH NAP

SIZES 10 12 14 16 18



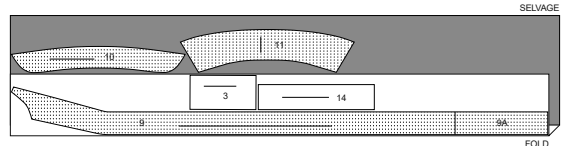
### INTERFACING A

USE PIECES 3 9(9A) 10 11 14

20" (51CM)

WITHOUT NAP

ALL SIZES



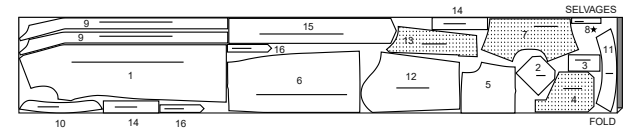
### DRESS AND BELT B

USE PIECES 1 2 3 4 5 6 7 8 9 10 11 12 13 14 15 16

45" (115CM)

WITH NAP

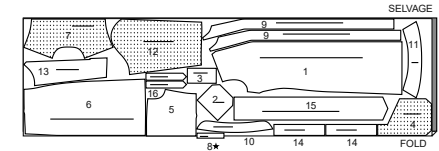
SIZES 10 12 14 16 18



60" (150CM)

WITH NAP

SIZES 10 12 14 16 18



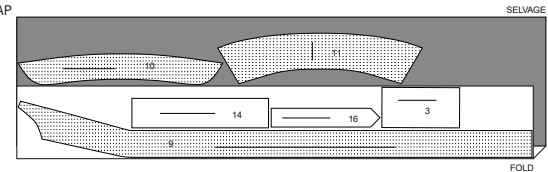
### INTERFACING B

USE PIECES 3 9 10 11 14 16

20" (51CM)

WITHOUT NAP

ALL SIZES



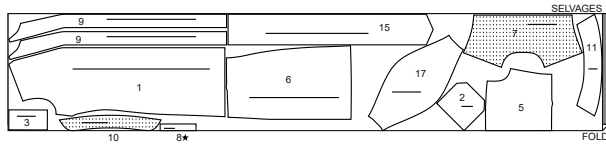
**S3065**

2 of 5

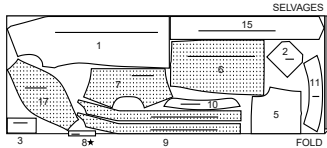
**DRESS AND BELT C**

USE PIECES 1 2 3 5 6 7 8 9 10 11 15 17

45" (115CM)  
WITH NAP  
SIZES 10 12 14 16 18

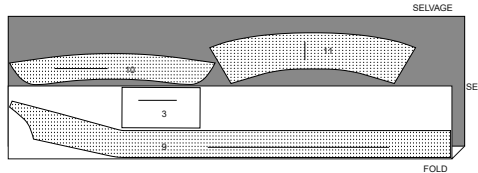


60" (150CM)  
WITH NAP  
SIZES 10 12 14 16 18

**INTERFACING C**

USE PIECES 3 9 10 11

20" (51CM)  
WITHOUT NAP  
ALL SIZES

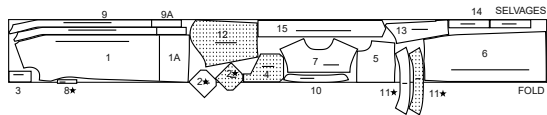


NOTE: BEFORE CUTTING FABRIC, JOIN PIECES IN PARENTHESIS TO CORRESPONDING PIECES FOLLOWING INSTRUCTIONS ON TISSUE PATTERN.

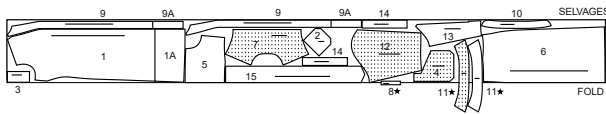
**WOMEN'S****DRESS AND BELT A**

USE PIECES 1(1A) 2 3 4 5 6 7 8 9(9A) 10 11 12 13 14 15

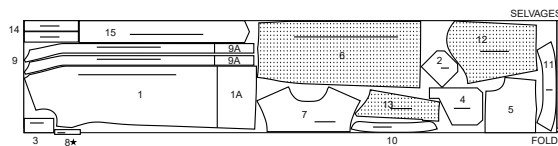
45" (115CM)  
WITH NAP  
SIZES 20W 22W 24W 26W 28W 30W



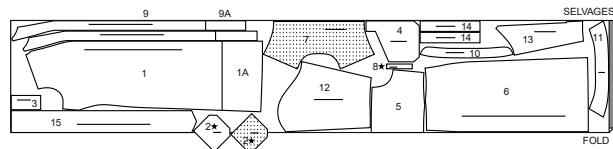
45" (115CM)  
WITH NAP  
SIZES 32W 34W 36W 38W



60" (150CM)  
WITH NAP  
SIZES 20W 22W 24W 26W 28W 30W

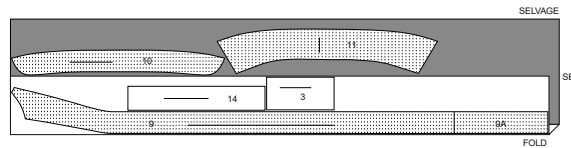


60" (150CM)  
WITH NAP  
SIZES 32W 34W 36W 38W

**INTERFACING A**

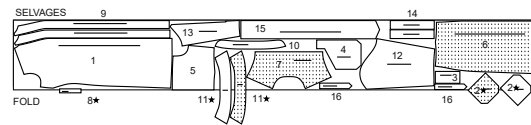
USE PIECES 3 9(9A) 10 11 14

20" (51CM)  
WITHOUT NAP  
ALL SIZES

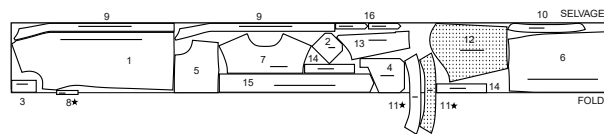
**DRESS AND BELT B**

USE PIECES 1 2 3 4 5 6 7 8 9 10 11 12 13 14 15 16

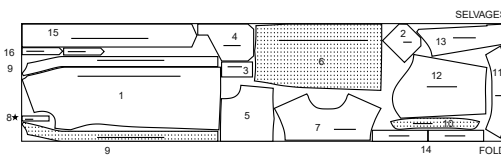
45" (115CM)  
WITH NAP  
SIZES 20W 22W 24W 26W 28W



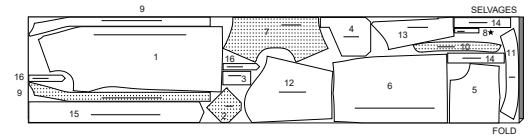
45" (115CM)  
WITH NAP  
SIZES 30W 32W 34W 36W 38W



60" (150CM)  
WITH NAP  
SIZES 20W 22W 24W 26W 28W

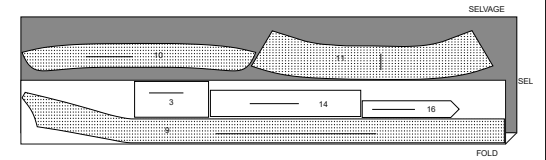


60" (150CM)  
WITH NAP  
SIZES 30W 32W 34W 36W 38W

**INTERFACING B**

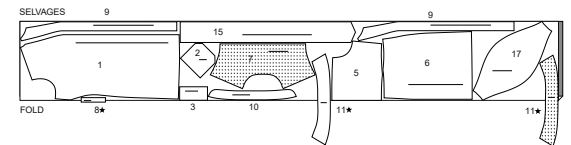
USE PIECES 3 9 10 11 14 16

20" (51CM)  
WITHOUT NAP  
ALL SIZES

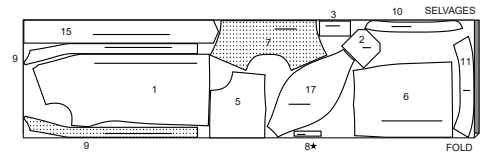
**DRESS AND BELT C**

USE PIECES 1 2 3 5 6 7 8 9 10 11 15 17

45" (115CM)  
WITH NAP  
SIZES 20W 22W 24W 26W 28W 30W 32W 34W 36W 38W

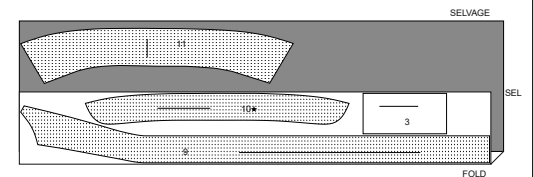


60" (150CM)  
WITH NAP  
SIZES 20W 22W 24W 26W 28W 30W 32W 34W 36W 38W

**INTERFACING C**

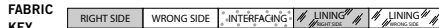
USE PIECES 3 9 10 11

20" (51CM)  
WITHOUT NAP  
ALL SIZES



## Sewing Directions

### FABRIC KEY



Read **General Directions** on page 1 before you begin.

Sewing methods in **BOLD TYPE** have Sewing Tutorial Video available. Scan **QR CODE** to watch videos:

**DART** - See **sewing flat dart** video.

**EASE/GATHER** - See **sewing two row gathers** video.

**FINISH** - See **finish seam allowances** video.

**NARROW HEM** - See **sewing narrow hems** video.

**EDGE STITCH** - See **how to edgestitch** video.

**REINFORCE** - See **how to reinforce** video.

**STAYSTITCH** - See **how to do stay-stitching** video.

**TOPSTITCH** - See **how to topstitch** video.

**UNDERSTITCH** - See **how to understitch** video.

**SLIPSTITCH** - See **how to slipstitch** video.

**TACK** - See **Hand Stitches: "how to tack"** video.

**TRIM** - See **Seams: "How to Sew: Trim, Clip, and Layer Seams"** video.

**PATTERN PIECES WILL BE IDENTIFIED BY NUMBERS THE FIRST TIME THEY ARE USED.**  
**STITCH 5/8" (1.5CM) SEAMS WITH RIGHT SIDES TOGETHER UNLESS OTHERWISE STATED.**

## DRESS A, B, C

**NOTE:** Under each sub-heading, the first View will be illustrated, unless otherwise indicated.

### INTERFACING

- Trim corners of INTERFACING, as shown. Fuse interfacing to wrong side of each matching FABRIC section, following manufacturer's instructions.

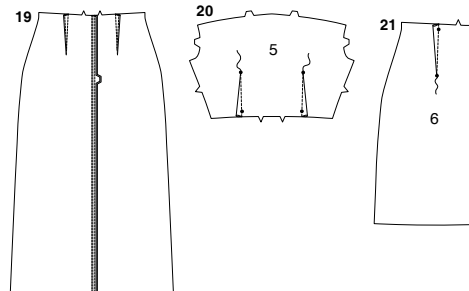
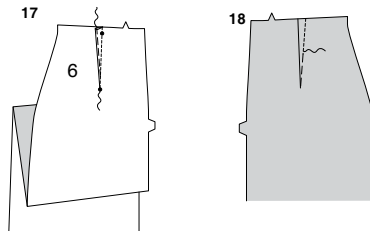
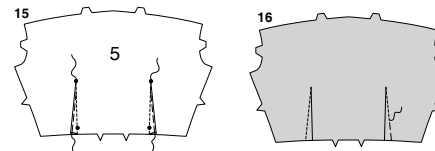
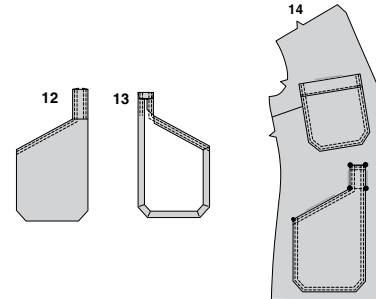
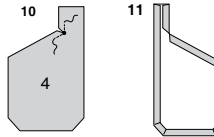
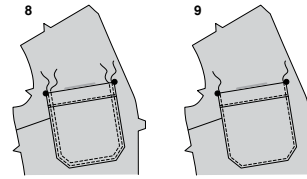
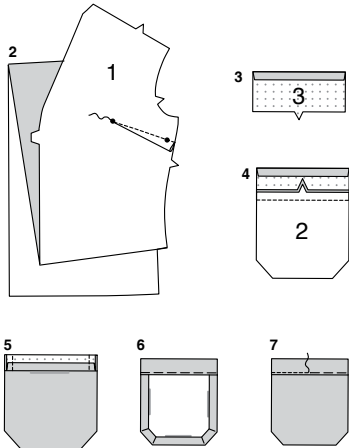
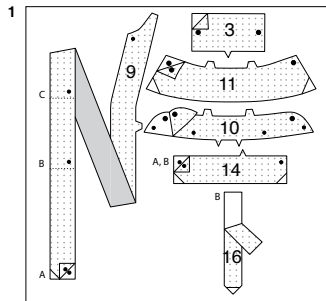
### FRONT

- Stitch **DART** in FRONT (1). Press dart down.
- Press under seam allowance on long unnotched edge of **POCKET BAND** (3).
- Pin pocket band to upper edge of **POCKET** (2) matching notches. Stitch. Press seam toward pocket band.
- With **RIGHT** sides together, fold pocket band along foldline. Stitch ends. Trim.
- Turn pocket band to **INSIDE**, turning in remaining seam allowances on pocket, diagonally folding corners. Press. Baste close to inner pressed edge.
- On **OUTSIDE**, **EDGE STITCH** lower edge of pocket band.

### SEWING TUTORIALS



Build your skills viewing short, easy-to-follow videos at [simplicity.com/sewingtutorials](http://simplicity.com/sewingtutorials)



### VIEWS A, B:

- Pin pocket to front, matching large dots. **EDGE STITCH** and **TOPSTITCH** side and lower edges, reinforcing upper ends.

### VIEW C

- Pin pocket to front, matching large dots. **EDGE STITCH** side and lower edges, reinforcing upper ends.

### VIEWS A, B

- REINFORCE** inner corner of **LOWER POCKET** (4) through large dot, as shown. Clip to large dot, being careful not to cut through stitching.

- Press under seam allowances on edges of pocket, diagonally folding corners, keeping upper edge free.

- EDGE STITCH** and **TOPSTITCH** front edge from upper edge to stitching line, as shown. **EDGE STITCH** and **TOPSTITCH** upper side edges from upper edge to side edge.

- Press under seam allowance on upper edge of lower pocket.

- Pin lower pocket to front, matching small and large dots. **EDGE STITCH** and **TOPSTITCH** upper, side, lower and front edges, connecting with previous stitching, reinforcing upper ends. Stitch along stitching line.

### BACK

### VIEWS A, B

- Stitch **DARTS** in **BODICE BACK** (5). Press darts toward sides. Baste close to dart folds.

- On **OUTSIDE**, stitch along basing.

- Stitch **DART** in **SKIRT BACK** (6). Press dart toward side. Baste close to dart fold.

- On **OUTSIDE**, stitch along basing.

- Stitch skirt back sections together at center back seam. Press seam toward left side. **EDGE STITCH** and **TOPSTITCH** left back seam.

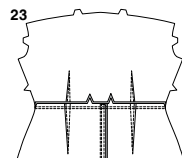
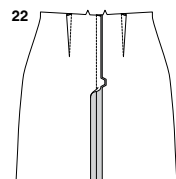
### VIEW C:

- Stitch **DARTS** in bodice back (5). Press darts toward sides.

- Stitch **DART** in skirt back (6). Press dart toward side.

## S3065

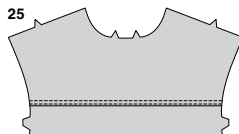
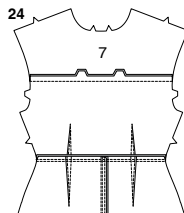
4 of 5



**22.** Stitch skirt back sections together at center back seam.

## ALL VIEWS

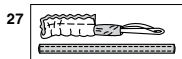
**23.** Pin bodice back to upper edge of skirt back, matching notches. Stitch. Press seam toward bodice. **EDGESTITCH** bodice seam.



**24.** Pin YOKE BACK (7) to upper edge of bodice back, matching notches. Stitch. Press seam toward yoke.

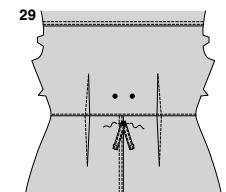
## VIEWS A, B

**25.** **EDGESTITCH** and **TOPSTITCH** yoke back seam.



## ALL VIEWS

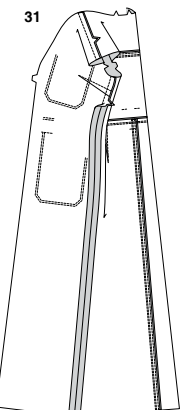
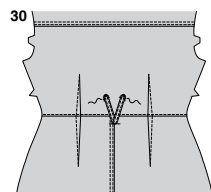
**26.** With RIGHT sides together, fold loop in half lengthwise. Stitch long edges together.



**27.** Turn loop RIGHT side out. Press. **EDGESTITCH** long edges.

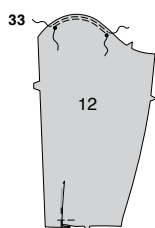
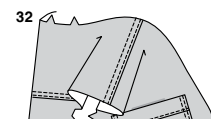
**28.** Cut loop in half, forming two loops.

**29.** Press under 1/4" (6mm) on one end of each loop. Pin remaining ends to skirt back, lapping ends, as shown, centering over large dot, checking that the pressed ends meet the large dots on bodice back. Stitch across ends 1/4" (6mm) from raw edge.



**30.** Turn up loops over seam. Pin pressed ends to bodice back, centering over large dots. Stitch close to pressed ends.

**31.** Stitch front to back at shoulders and sides. Press shoulder seams toward yoke back.



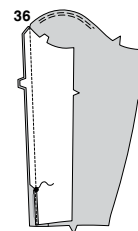
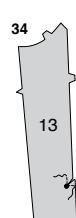
## VIEWS A, B

**32.** **EDGESTITCH** and **TOPSTITCH** yoke shoulder seams.

## SLEEVE

## VIEWS A, B

**33.** **EASE** upper edge of UPPER SLEEVE (12). To make pleat in sleeve, on OUTSIDE, crease sleeve along solid line. Bring crease to broken line. Pin. Baste across lower edge. Press.



**34.** **REINFORCE** inner edge of UNDER SLEEVE (13) through large dot, as shown. Clip diagonally to large dot.

**35.** Make **NARROW HEM** at lower front edge of under sleeve, below clip.

**36.** With RIGHT sides together, pin upper sleeve to lower sleeve, matching notches and large dots. Stitch, ending stitching at large dot. Press seam toward upper sleeve.

**37.** Make **NARROW HEM** at lower back edge of upper sleeve, as shown, tapering to nothing above large dot.

**38.** **EDGESTITCH** and **TOPSTITCH** upper sleeve seam, pivoting to large dot.

## VIEW B

**39.** For each sleeve, with RIGHT sides together, pin one interfaced SLEEVE TAB (16) to one uninterfaced sleeve tab. Stitch in a 3/8" (1cm) seam, leaving straight end open. **TRIM** seam. Clip corners.

**40.** Turn RIGHT side out. Press. Baste raw edges together. **EDGESTITCH** finished edges. Make buttonhole in sleeve tab at marking.

**41.** On INSIDE, pin sleeve tab to upper sleeve, having pointed end upward, placing seamline along placement line. Stitch sleeve tab along seamline. Trim seam allowance to a scant 1/4" (6mm), being careful not to cut sleeve.

**42.** Turn tab toward lower edge, over seam. Press. **EDGESTITCH** upper edge of tab, as shown.

**43.** On OUTSIDE, sew button to sleeve at small dot.

## VIEWS A, B

**44.** Stitch sleeve seam.

**45.** For facing, press under seam allowance on notched edge of each uninterfaced CUFF (14) section. Trim pressed seam allowance to 3/8" (1cm).

**46.** For each sleeve, with RIGHT sides together, pin one cuff to one cuff facing. Stitch, leaving upper edge open. Trim corners.

**47.** Turn RIGHT side out. Press.

**48.** With RIGHT sides together, pin cuff to sleeve, matching notches and small dots. Stitch. Trim seam. Press cuff out, pressing seam towards cuff.

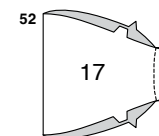
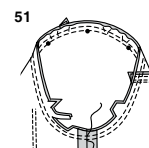
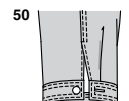
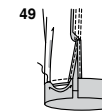
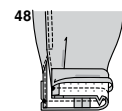
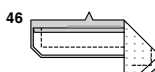
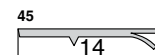
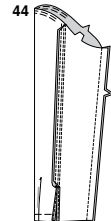
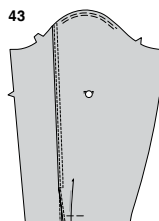
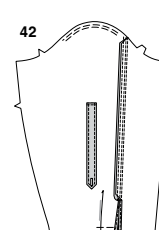
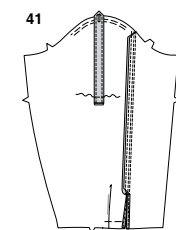
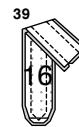
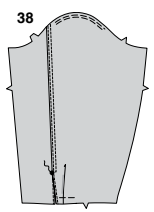
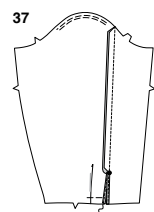
**49.** **SLIPSTITCH** pressed edge over seam.

**50.** **EDGESTITCH** and **TOPSTITCH** all edges of cuff. Make buttonhole in cuff at marking. Sew button to cuff at small dot.

**51.** With right sides together, pin sleeve into armhole, matching small dots. Stitch. Stitch again 1/4" (6mm) away in seam allowance. Trim close to stitching. Press seam allowances flat. Turn seam toward sleeve.

## VIEW C

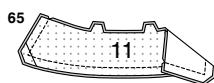
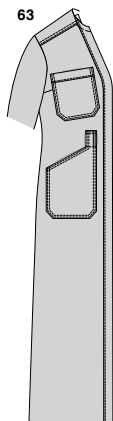
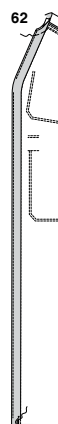
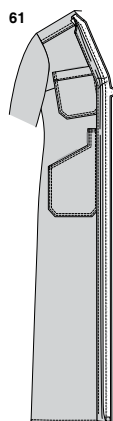
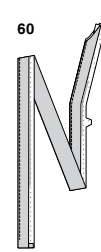
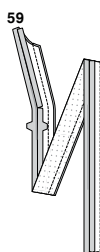
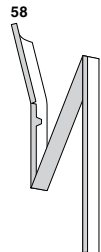
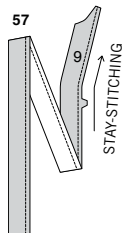
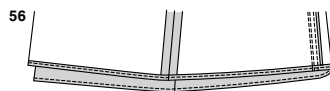
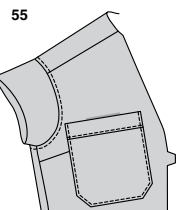
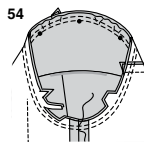
**52.** Stitch ends of SLEEVE (17).





## S3065

5 of 5



**53.** With **WRONG** sides together, fold sleeve along foldline. Press. Baste raw edges.  
**EASE** upper edge of sleeve between outer small dots.

**54.** With right sides together, pin sleeve into armhole, matching small dots. Adjust ease; baste. Stitch. Stitch again 1/4" (6mm) away in seam allowance. Trim close to stitching. Press seam allowances flat. Turn seam toward armhole.

**55.** **TOPSTITCH** armhole seam.

## FINISHING

**56.** Make **NARROW HEM** at lower edge of dress.

**57.** For facing, **STAYSTITCH** inner edge of each uninterfaced **PLACKET** (9) in direction of arrow.

**58.** Press under seam allowance on inner edge, clipping to staystitching where necessary, being careful not to through stitching.

**59.** For each side, with **RIGHT** sides together, pin placket cuff to one placket facing. Stitch front and lower edges. Trim seam. Clip corner.  
**UNDERSTITCH** facing, as far as possible.

**60.** Turn **RIGHT** side out. Press.

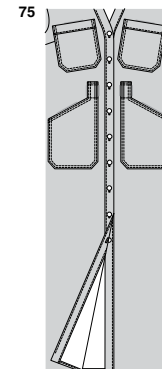
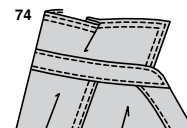
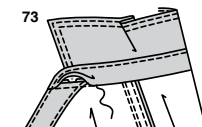
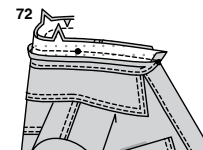
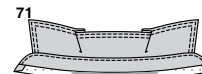
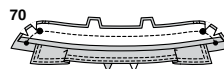
**61.** Pin plackets to front, matching notches and small dots. Stitch. Trim seam. Press placket out, pressing seam towards placket.

**62.** **SLIPSTITCH** pressed edge over seam. Baste upper edges.

**63.** **EDGE STITCH** inner edge of placket.

**64.** **STAYSTITCH** neck edge in direction of arrows.

**65.** For each side, stitch one interfaced and one uninterfaced **COLLAR** (11) section together, leaving notched edge open. Trim. Clip corners.  
**NOTE:** uninterfaced collar sections will be used as facing. **UNDERSTITCH** facing as far as possible.



**66.** Turn. Press. Baste raw edges together.

**VIEWES A, B:**

**67.** **EDGE STITCH** and **TOPSTITCH** finished edges.

**ALL VIEWS:**

**68.** Pin collar to **RIGHT** side of interfaced **COLLAR BAND** (10) section, facing side down, matching centers and large dots. Baste.

**69.** For facing, press under seam allowance on lower edge of uninterfaced collar band section, easing in fullness if necessary. Trim pressed seam allowance to 3/8" (1cm).

**70.** With right sides together, pin collar band facing to collar band, over collar, matching centers and dots. Stitch, leaving lower edge open. Trim. **UNDERSTITCH** facing as far as possible.

**71.** Turn. Press.

**72.** Pin collar band and collar to neck edge, matching centers and small dots, clipping neck edge where necessary. Baste. Stitch. Trim. Press collar out, pressing seam towards collar band.

**73.** **SLIPSTITCH** pressed edge over seam.

**74.** **EDGE STITCH** collar band.

**75.** Make buttonholes in right front at markings. Lap opening edges, as shown, matching centers. Using buttonholes as guides, make button markings on left front. Sew buttons at markings.

**76.** Stitch **TIE BELT** (15) sections together at notched end.

**77.** With **RIGHT** sides together, fold tie belt in half lengthwise. Stitch outer edges, leaving an opening for turning. Trim seam. Clip corners.

**78.** Turn **RIGHT** side out. Press. **SLIPSTITCH** opening.

**VIEWES A, B**

**79.** **EDGE STITCH** and **TOPSTITCH** belt.



# Congrats!

You've completed your sewing adventure

---

## SHARE YOUR LOOK



Post your pattern and tag us using [#simplicitypatterns](#)  
[@simplicity\\_creative\\_group](#)  
[@simplicitymccallsuk](#)  
[@simplicitymccallsaustralia](#)  
for a chance to be featured on our social media.

Look for more PDF patterns at [simplicity.com](#) or for customers outside the U.S. and Canada visit [sewdirect.com](#) and [sewdirect.com.au](#)

Have a question or need help with your sewing project contact us:  
[Simplicity.com](#)    [Sewdirect.com](#)    [Sewdirect.com.au](#)



Simplicity ©2024 a division of IG Design Group Americas Inc. • Atlanta, GA 30342 USA [www.thedesigngroup.com](#) • All Rights Reserved. [www.simplicity.com](#) • Made in the U.S.A. Fabriqué aux États-Unis.

To be used for individual private home use only and not for commercial or manufacturing purposes. • A usage privé seulement et non à des fins commerciales ou de production en série. • Para uso privado solamente, no se puede utilizar con propósitos de comercialización o de producción en serie.