

S3063

# Simplicity<sup>®</sup> COSTUMES



Scan QR code for a Sew-Along video tutorial

Shop all the pattern brands you love @

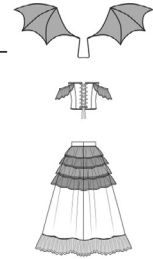
**Simplicity<sup>®</sup>.com**

Average

## MISSES' CORSET AND SKIRT COSTUME

**Suggested Fabrics:** Corset and Lower Skirt Ruffle in Brocade, Satin, Shantung, Silk Dupioni, Taffeta. **Contrast 1:** Satin, Taffeta. **Contrast 2 & 3** in Lace, Novelty Mesh Fabrics. **Contrast 4** in Mesh, Tricot. **Interlining:** Canvas, Coutil. **Interfacing:** Lightweight Fusible.

**Notions:** Corset and Skirt: 12 yds. (11.0m) of ¼" (1.5cm) flexible braid trim. **Also for Corset:** 5½ yds. (5.1m) of ¼" (6mm) spiral steel boning, pair of foam bust cups, twenty six grommets with ¼" (6mm) opening, 1¼ yds. (1.1m) of ¼" (6mm) cording, ⅞ yd. (0.8m) of ½" (1.3cm) elastic, 4¼ yds. (3.9m) of ⅜" (1cm) ribbon. **Also for Skirt:** One 9" (23cm) invisible zipper, hook and eye. **Wings:** 3¼ yds. (2.0m) of 12 gauge galvanized steel wire, 1¼ yds. (1.4m) of 14 gauge galvanized steel wire, pliers, electrical tape, one pkg. of ½" (1.3cm) single fold bias tape, one pkg. of ½" (1.3cm) double fold bias tape.



Sizes	6	8	10	12	14	16	18	20	22
European	32	34	36	38	40	42	44	46	48

Corset and Lower Skirt Ruffle										
45**	3¼	3½	3¾	3¾	4	4	4¼	4¼	4¼	Yds.
115cm*	3.4	3.5	3.5	3.5	3.7	3.7	3.8	3.8	3.9	m
Contrast 1 (Skirt and Corset Lining - cut skirt crosswise only)										
45**	5¼	5½	5¾	5¾	5¾	5¾	5¾	6	6	Yds.
115cm*	5.3	5.3	5.4	5.4	5.4	5.4	5.4	5.5	5.5	m
Contrast 2 (Armhole Ruffles, Wings, Skirt Ruffles 1 and 3)										
45**	3	3	3	3	3¼	3¼	3¼	3¼	3¼	Yds.
115cm*	2.7	2.7	2.7	2.7	2.7	2.9	2.9	2.9	2.9	m
Contrast 3 (Skirt Ruffles 2 and 4)										
45**	3¼	3¼	3¼	3¼	3¼	3¼	3¼	3¼	3¼	Yds.
115cm*	2.9	2.9	2.9	2.9	2.9	2.9	2.9	2.9	2.9	m
Contrast 4 (Inset Front)										
60**	¾	¾	¾	¾	¾	¾	¾	¾	¾	Yd.
150cm*	0.6	0.6	0.6	0.6	0.6	0.6	0.6	0.6	0.6	m
Interlining										
45***	¾	¾	¾	¾	¾	¾	¾	¾	1	Yd.
115cm**	0.7	0.7	0.7	0.7	0.7	0.8	0.8	0.8	0.9	m
Interfacing - 20" - 1¼ yds. (51cm - 1.1m)										

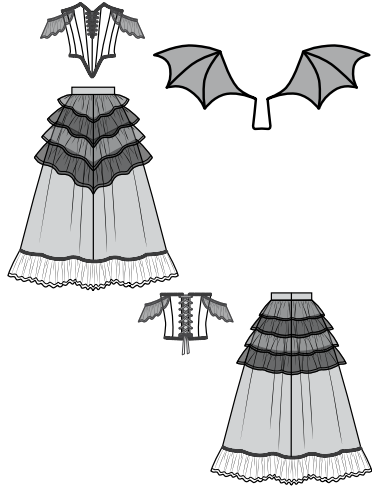
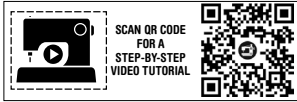
## FINISHED GARMENT MEASUREMENTS (Includes Design and Wearing Ease)

Waist	24	25	26	27½	29½	31½	33½	35½	37½	Ins.
	(61)	(64)	(66)	(70)	(75)	(80)	(85)	(90)	(95)	(cm)
Finished back length from waist										
Skirt (incl. ruffle)	46	46	46	46	46	46	46	46	46	Ins.
	(117)	(117)	(117)	(117)	(117)	(117)	(117)	(117)	(117)	(cm)

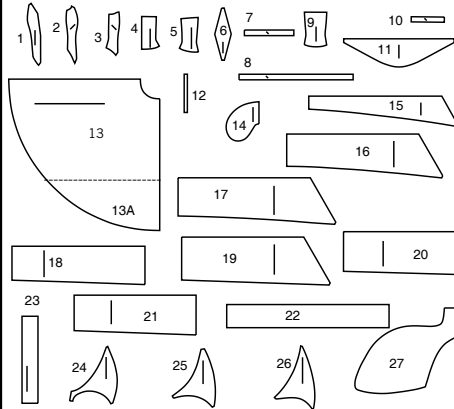
\*with nap \*\*without nap

# Simplicity

Thank you for purchasing this Simplicity pattern. We made every effort to provide you with a high quality product.



27 PIECES



- 1 FRONT
- 2 MIDDLE FRONT
- 3 SIDE FRONT
- 4 BACK
- 5 SIDE BACK
- 6 INSET FRONT
- 7 UPPER BINDING
- 8 LOWER BINDING
- 9 BACK PANEL
- 10 BACK BINDING
- 11 ARMHOLE RUFFLE
- 12 GUIDE FOR ELASTIC
- 13 SKIRT FRONT AND BACK (13A) EXTENSION
- 14 POCKET
- 15 RUFFLE 1
- 16 RUFFLE 2
- 17 FRONT RUFFLE 3
- 18 BACK RUFFLE 3
- 19 FRONT RUFFLE 4
- 20 SIDE RUFFLE 4
- 21 BACK RUFFLE 4
- 22 LOWER RUFFLE 4
- 23 WAISTBAND
- 24 WING - 1
- 25 WING - 2
- 26 WING - 3
- 27 FRAME GUIDE

## The Pattern General Directions Cutting/Marking

**SYMBOLS**

- ↔ GRAIN LINE Place on straight grain of fabric parallel to selvage
- ⇓ PLACE SOLID LINE on fold of fabric.
- CENTER FRONT OR BACK of garment.
- ∇ NOTCHES
- DOTS
- CUTTING LINE
- == LENGTHEN OR SHORTEN LINES

**ADJUST IF NEEDED**

Make adjustments before placing pattern on fabric.

**TO LENGTHEN:** Cut pattern between lengthen or shorten lines. Spread pattern evenly, the amount needed and tape to paper.

**TO SHORTEN:** At lengthen or shorten lines, make an even pleat taking up amount needed. Tape in place.

When lengthen or shorten lines are not given, make adjustments at lower edge of pattern.

**SEAM ALLOWANCE:** 5/8" (1.5cm) unless otherwise stated is included but not printed on MULTI-SIZE PATTERNS. Mark your size with colored felt tip pen. See chart on tissue for how to use MULTI-SIZE PATTERNS.

**Sewing**

- SEW garment following **Sewing Directions**.
- PIN or machine-baste seams matching notches.
- STITCH 5/8" (1.5 cm) seams unless otherwise stated.
- PRESS seams open unless otherwise indicated clipping when necessary so seams will lie flat.
- TRIM seams to reduce bulk, as shown below.

**BEFORE CUTTING:**

PRESS pattern pieces with a warm dry iron. PRE-SHRINK fabric by pre-washing washables or steam-pressing non-washables.

CIRCLE your cutting layout.

PIN pattern to fabric as shown in Cutting Layouts.

**AFTER CUTTING:**

Transfer markings to WRONG side of fabric before removing pattern. Use pin and chalk method or dressmaker's tracing paper and wheel.

**To Quick Mark:**

- Snip edge of fabric to mark notches, ends of fold lines and center lines.
- Pin mark dots.

**SPECIAL CUTTING NOTES**

- ★ If layout shows a piece extending past fold, cut out all pieces except piece that extends.
- ✱ Mark small arrows along both selvages indicating direction of nap or design. Fold fabric crosswise with RIGHT sides together, and cut along fold (a).

Open out fabric to single thickness. Cut extending piece on RIGHT side of fabric in position shown.

Turn one fabric layer around so arrows on both layers go in the same direction. Place RIGHT sides together (b).

**Cutting Layouts**

WRONG SIDE OF FABRIC, RIGHT SIDE OF FABRIC, PATTERN PIECE WITH PRINTED SIDE UP, PATTERN PIECE WITH PRINTED SIDE DOWN, SEE SPECIAL CUTTING NOTES

POSITION OF PATTERN PIECES MAY VARY SLIGHTLY ACCORDING TO YOUR PATTERN SIZE

**CORSET AND LOWER SKIRT RUFFLE**

USE PIECES 1 2 3 4 5 7 8 10 22

45" (115CM) WITH NAP SIZES 6 8 10 12 14

45" (115CM) WITH NAP SIZES 16 18 20 22

**CONTRAST 1 (SKIRT AND CORSET LINING)**

**NOTE:** BEFORE CUTTING FABRIC, JOIN PIECES IN PARENTHESIS TO CORRESPONDING PIECES FOLLOWING INSTRUCTIONS ON TISSUE PATTERN.

USE PIECES 1 2 3 4 5 9 13 (13A) 14 23

CUT FOUR OF PIECE 14 ON RIGHT SIDE OF FABRIC.

CUT ONE OF PIECE 23

60" (150CM) WITH NAP ALL SIZES

**CONTRAST 2 (ARMHOLE RUFFLES, WINGS, SKIRT RUFFLES 1 AND 3)**

USE PIECES 11 15 17 18 24 25 26

60" (150CM) WITH NAP ALL SIZES

**CONTRAST 3 (SKIRT RUFFLES 2 AND 4)**

USE PIECES 16 19 20 21

60" (150CM) WITH NAP ALL SIZES

**CONTRAST 4 (INSET FRONT)**

USE PIECE 6

60" (150CM) WITH NAP ALL SIZES

**INTERLINING**

USE PIECES 1 2 3 4 5 9

CUT ONE OF PIECE 9

45" (115CM) WITHOUT NAP ALL SIZES

**INTERFACING**

USE PIECE 23

20" (51CM) WITH NAP ALL SIZES

## Sewing Directions

FABRIC KEY RIGHT SIDE WRONG SIDE INTERFACING LINING LINING

Read **General Directions** on page 1 before you begin.

Sewing methods in **BOLD TYPE** have Sewing Tutorial Video available. Scan QR CODE to watch videos:

**GATHER** – See **Gathering: “sewing two row gathers”** video.

**INVISIBLE ZIPPER** – See **Zippers: “sewing an invisible zipper”** video.

**NARROW HEM** – See **Hems: “sewing narrow hems”** video.

**SLIPSTITCH** – See **Hand Stitching: “how to slip stitch”** video.

### GLOSSARY OF SEWING METHODS

Sewing methods shown in *ITALICS* are defined below:

**FINISH** – Stitch 1/4” (6mm) from raw edge and finish with one of the following: (1) Pink OR (2) Overcast OR (3) Turn in along stitching and stitch close to fold OR (4) Overlock.

**GATHER** – Loosen needle tension slightly. With **RIGHT** side up, stitch 5/8” (1.5cm) from cut edge using a long stitch. Stitch again 1/4” (6mm) from the first stitching within the seam allowance.

**NARROW HEM** – Press under hem allowance as indicated on tissue pattern. To form narrow hem, tuck under raw edge to meet crease. Press. Stitch hem in place.

**SLIPSTITCH** – Slide needle through a folded edge, then pick up a thread of underneath fabric.

**STAY-STITCH** – Stitch 1/2” (1.3cm) from cut edge in direction of arrows. This stitching stays in permanently to prevent stretching on curved edges. (Shown only in the first illustration.)

**UNDERSTITCH** – Press lining and seam away from garment, stitching through facing and seam allowances close to seam.

**PATTERN PIECES WILL BE IDENTIFIED BY NUMBERS THE FIRST TIME THEY ARE USED.**

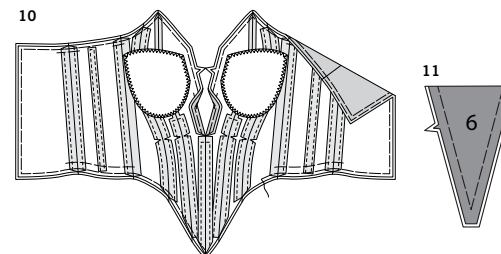
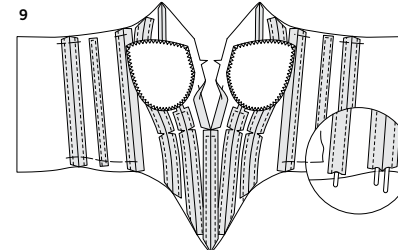
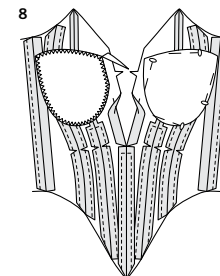
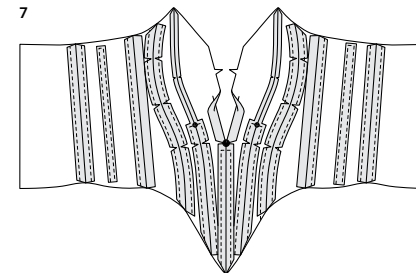
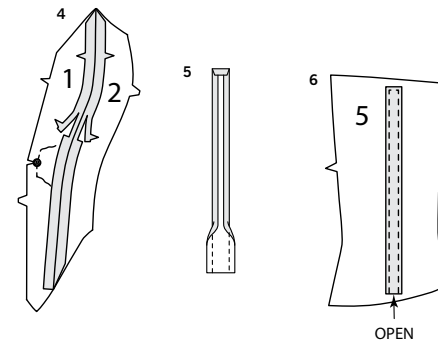
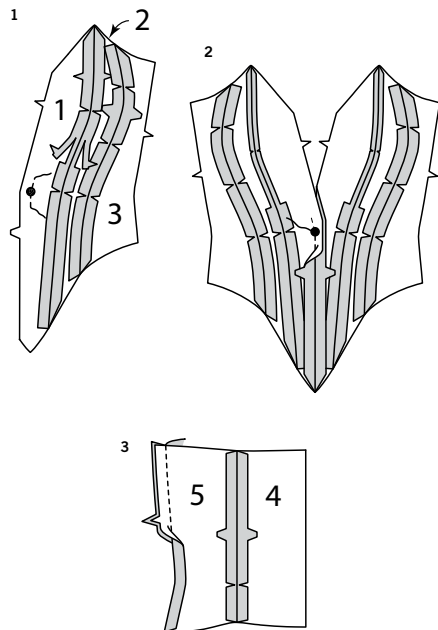
**STITCH 5/8” (1.5CM) SEAMS WITH RIGHT SIDES TOGETHER UNLESS OTHERWISE STATED.**

### COSTUME CORSET

**NOTE:** Contrast 1 fabric will be shown as lining.

#### BODICE

- To reinforce front edge of fabric FRONT (1) at large dots, stitch along seam line for about 1” (2.5cm) each side large dot, stitching through dots, as shown. With **RIGHT** sides together and raw edges even, pin fabric front to MIDDLE FRONT (2), matching notches. Stitch. Trim seam above the lower notch to 1/4” (6mm). Clip curves. Press seam open. Pin fabric middle front to fabric SIDE FRONT (3), matching notches. Stitch. Clip curves. Press seams open.
- Stitch fabric front sections together along center front edges from lower edge to large dot, back-stitching at dot to reinforce the seam. Press seam open.
- Pin fabric BACK (4) to SIDE BACK (5), matching notches. Stitch. Stitch bodice front to bodice back at side edges. Clip curves. Press seams open. Stitch bodice contrast lining sections together in the same manner as fabric bodice. Trim seams. Press seams open.



#### BODICE INTERLINING

**NOTE:** Do not trim seam allowances on interlining sections unless directed.

- To reinforce front edge of interlining FRONT (1) at large dots, stitch along seam line for about 1” (2.5cm) each side large dot, stitching through dots, as shown. Clip at stitching at dots. With **RIGHT** sides together and raw edges even, pin interlining front to MIDDLE FRONT (2), matching notches. Stitch. Trim seam above the lower notch to 1/4” (6mm). Clip curves.
- For SIDE BACK (5) interlining sections, cut a remnant of interlining fabric 7/8” (2.2cm) wide by the length of the placement line for boning, plus 1/2” (1.3cm). Machine-stitch 1/4” (6mm) from long edges. Press fabric to **INSIDE** along stitching. Turn under ends 1/4” (6mm). These will become channels for boning.
- On **INSIDE**, center boning channels over the placement line on side back. Stitch close to both long edges, and upper end.
- Stitch remaining bodice interlining sections together in the same manner as fabric bodice. Press seams open. To create additional channels for boning, stitch seam allowances 3/8” (1cm) from seams, squaring stitching at small dot on middle front (front) seam and 1/2” (1.3cm) below large dot on center front seam. (Each seam will have a channel on either side allowing for two strips of boning per seam, except for the side seams which will have only one strip inserted into the side seam at the side back channel.) (Additional channels and strips of boning will be added later.)
- Pin cups to bodice at the most curved part of the bust, as shown, measuring to keep even. Trim cups at the 5/8” (1.5cm) front seamline. Zigzag stitch cups in place.

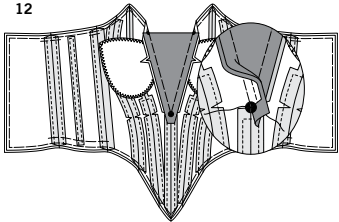
- Cut 1/4” (6mm) spiral steel boning the length of each boning channel, minus 3/4” (2cm) for channels under the bust cups; and subtracting 1-1/2” (3.8cm) from the length of each remaining channel. Insert boning into channels. Baste across channels 3/4” (2cm) from lower edge of interlining, and 1/2” (1.3cm) from upper edge omitting channels under bust cups and at center front.

- Clip center front of fabric bodice to stitching at large dot. Pin **WRONG** side of fabric bodice to **RIGHT** side of bodice interlining matching centers, seams, and notches. Baste together 1/4” (6mm) from raw edges.

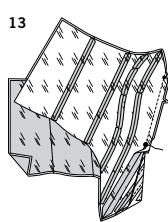
#### INSET FRONT

- Fold INSET FRONT (6) along foldline with **WRONG** sides together. Baste.

12



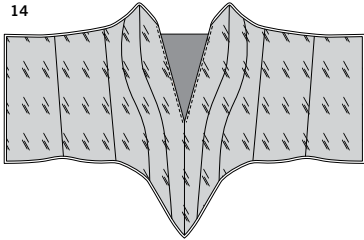
13



**12.** With RIGHT sides together and raw edges even, pin inset to bodice, matching small dots, large dots, and notches. Baste each front section, breaking stitching at large dot.

**13.** With RIGHT sides together and raw edges even, pin lining to bodice (over inset), matching small dots, large dots, and notches. Stitch notched edge of front, stitching each front section separately, breaking stitching at large dot.

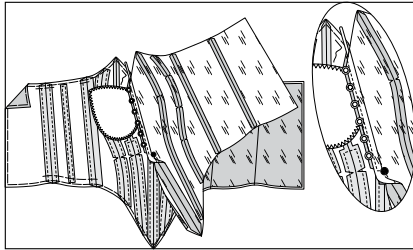
14



**14.** **UNDERSTITCH** the lining. Turn lining to INSIDE, press.

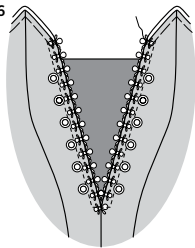
#### CONTINUE AS FOLLOWS KEEPING LINING FREE

15



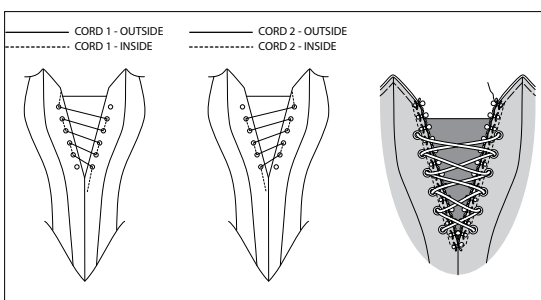
**15.** Keeping lining free and working on one half of the corset at a time, to make channels for boning, on INSIDE, stitch front sections 3/8" (1cm) from inset seam, squaring stitching at large dot. Make grommet openings on front sections at small dots using an awl, or by cutting small holes with an embroidery scissors. Apply grommets following manufacturer's directions. Cut a piece of boning the length of each channel, minus 3/4" (2cm). Insert boning into channels; baste 1/4" (6mm) from upper edge.

16



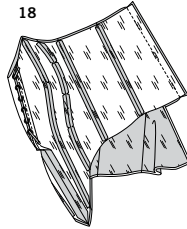
**16.** Cut a piece of 5/8" (1.5cm) flexible trim the length of each inset seam. On OUTSIDE, pin outer edge of trim to front along inset seams. Hand-sew in place.

17

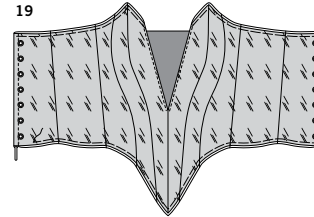


**17.** Cut two pieces of 1/4" (6mm) cording 30" (76cm) long. On INSIDE, pin each end of cord to interlining below lowest grommet, tack in place along center seam allowance, securely. Thread each piece of cording through lowest grommet, bringing ends to OUTSIDE, and follow the illustration guide to thread cording through remaining grommets, lacing up the bodice. Tack ends to seam allowance. Trim ends of cord.

18



19



#### CONTINUE AS FOLLOWS

**18.** Working on one side at a time, open out the lining. With RIGHT sides together and raw edges even, pin lining to bodice at back edges. Stitch. Trim seam.

**19.** Turn lining to INSIDE; press. Finish remaining back edge in the same manner. To make channel for boning, stitch 3/8" (1cm) from finished back edge. Baste lining to bodice 1/4" (6mm) from upper edge. Make grommet openings on back sections at small dots using an awl, or by cutting small holes with an embroidery scissors. Apply grommets following manufacturer's directions. Cut a piece of boning the length of each back channel, minus 3/4" (2cm). Insert boning into channels; baste lining to bodice 1/4" (6mm) from lower edge.

#### ARMHOLE RUFFLE

**20.** Press under 5/8" (1.5cm) hem allowance on lower edge of ARMHOLE RUFFLE (11). To from a **NARROW HEM**, turn under raw edge to meet crease. Stitch close to inner pressed edge.

**21.** Press under 7/8" (2.2cm) on straight edge of armhole ruffle. To form casing for elastic, turn under raw edge 1/4" (6mm). Stitch close to inner pressed edge.

**22.** Cut a piece of elastic the length of the GUIDE FOR ELASTIC (12). Transfer markings. Thread elastic through opening in casing. Stitch across ends. On OUTSIDE, pin ruffle to upper edge of bodice, matching large dots. Baste ends in place 1/4" (6mm) from raw edges.

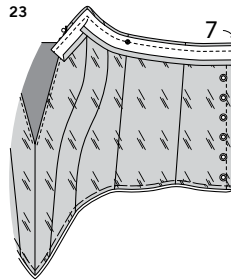
#### BINDING AND TRIM

**23.** Press under 3/8" (1cm) on unmarked edge of UPPER BINDING (7). On INSIDE, pin binding to upper edge of bodice, placing small dot at side seam. Stitch in a 3/8" (1cm) seam. Press binding up, pressing seam toward binding.

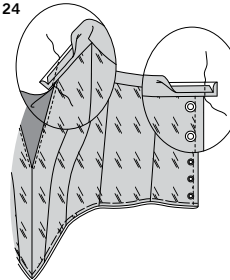
**24.** On INSIDE, fold ends of binding in half with RIGHT sides together. Stitch across ends, being careful not to stitch through inset. Trim seam.

**25.** Turn binding to OUTSIDE. Pin pressed edge of binding along seam, folding in fullness at corners. Stitch close to inner pressed edge. Pin LOWER BINDING (8) to lower edge of bodice, placing small dots at center and side seams, and stitch in place in the same manner as upper binding.

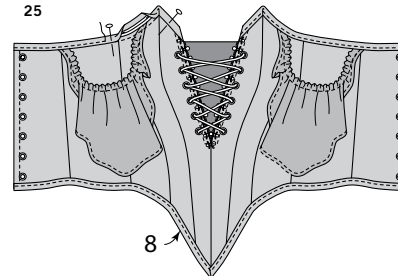
23

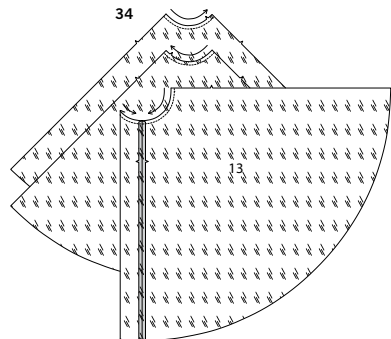
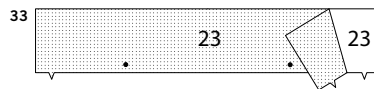
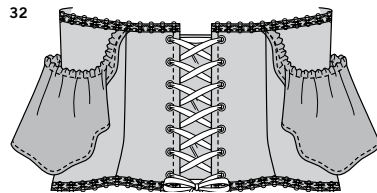
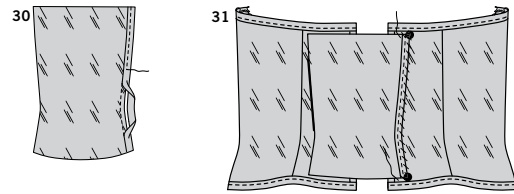
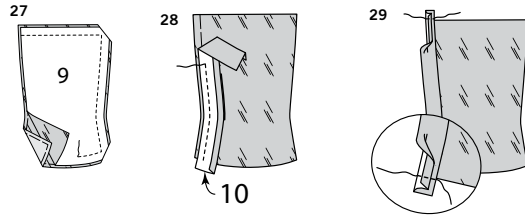
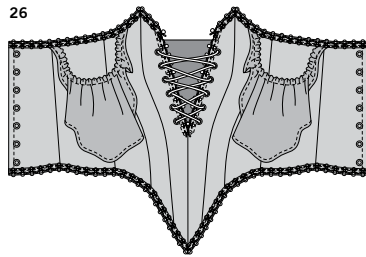


24



25





**26.** Cut a piece of 5/8" (1.5cm) flexible trim the length of each upper edge and one the length of the lower edge of bodice. Pin trim to finished edges of bodice. Hand-sew in place.

**TIP:** Before cutting the trim for upper edge, find the ideal look of the trim motif for upper corner. Cut the second piece for the remaining upper edge to mirror that motif. Before cutting the lower piece of trim, fold a length of trim in half lengthwise. Center the trim motif over the center front, and then cut the length from either side. Or, cut two separate pieces of trim that can be joined symmetrically at center front.

### FINISHING

**27.** Pin interlining to WRONG side of one BACK PANEL (9) section. Baste 1/4" (6mm) from raw edges. With RIGHT sides together and raw edges even, pin back panel facing to back panel. Stitch leaving LEFT edge open for turning. Trim seam.

**28.** Turn back panel; press. Baste 1/4" (6mm) from raw edge. Press under 3/8" (1cm) on one long edge of BACK BINDING (10). On OUTSIDE, pin binding to back panel with raw edges even and ends extending beyond upper and lower edges. Stitch in a 3/8" (1cm) seam. Press binding out.

**29.** Fold binding in half at ends with RIGHT sides together. Stitch across ends. Trim seams.

**30.** Turn pressed edge of binding to INSIDE over seam. Stitch close to inner edge.

**31.** On INSIDE, pin bound edge of back panel to left back along placement line with ends at large dots. **SLIPSTITCH** in place along placement line and across upper and lower corners for 1/2" (1.3cm).

**32.** Cut a piece of 3/8" (1cm) wide ribbon 104" (264cm) long. Trim ends diagonally. Mark center of ribbon with a pin. On INSIDE of each half, thread ends of ribbon through upper grommets and bring to OUTSIDE, evenly. Lace ribbon through remaining grommets crossing diagonally, bringing ends to OUTSIDE. Tie ends of ribbon into a bow when wearing.

### COSTUME SKIRT

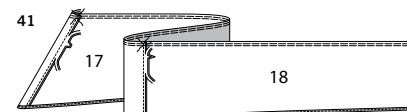
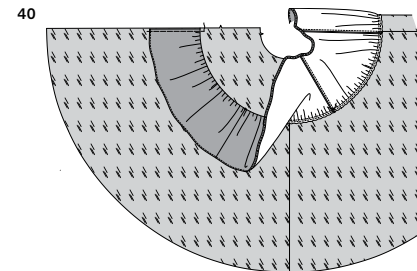
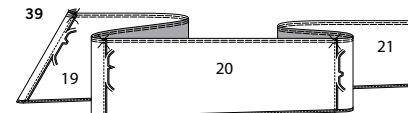
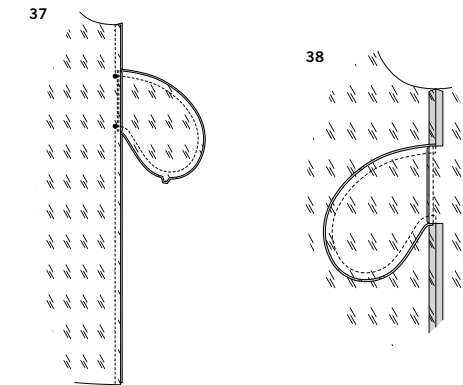
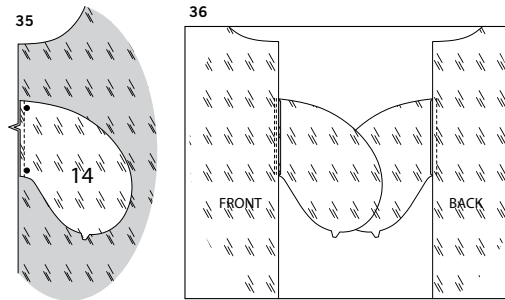
**NOTE:** Contrast 1 fabric will be shown as lining.

### INTERFACING

**33.** Pin interfacing to WRONG side of WAISTBAND (23). Fuse in place following manufacturer's directions.

### SKIRT FRONT AND BACK

**34.** **STAY-STITCH** upper edge of SKIRT FRONT and SKIRT BACK (13) sections. Stitch center front edges of skirt.



**35.** With RIGHT sides together and raw edges even, pin POCKET (14) to skirt sections, matching large dots. Stitch in a 3/8" (1cm) seam.

**36.** **UNDERSTITCH** the front pocket. Press seams toward pockets, pressing pockets out.

**37.** Pin front to back at side seams, matching large dots. In one continuous stitching, stitch side seams and pockets, squaring stitching at large dots.

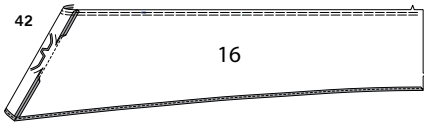
**38.** Clip skirt back seam allowance at ends of pocket, as shown. Press seam open above and below clips. Press pocket toward front.

**NOTE:** Hang skirt overnight to stretch out the bias. Using your pattern tissue as a guide, trim skirt length, and remark placement lines that may have altered.

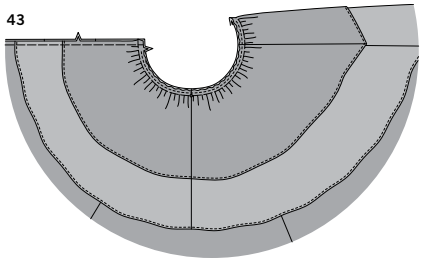
**39.** Pin FRONT RUFFLE 4 (19) to SIDE RUFFLE 4 (20), matching single notched edges. Stitch. Pin side ruffle to BACK RUFFLE 4 (21), matching double notched edge. Stitch. Trim seams to 1/4" (6mm). Press seams toward back. Stitch front ruffle sections together at double notched edge. Trim seam to 1/4" (6mm). Press seam to one side. **NARROW HEM** lower edge of ruffle. **GATHER** upper edge between the back seamlines, breaking stitching at seamlines.

**40.** With RIGHT sides together, pin ruffle 4 to skirt with upper seamline along lower placement line and hemmed edge toward waistline, matching centers, placing seams at small dots, being careful not to catch in pocket on the INSIDE. Pull up gathering stitches. Stitch, breaking stitching at pocket. Trim seam. Turn ruffle toward lower edge of skirt. Baste back edges together.

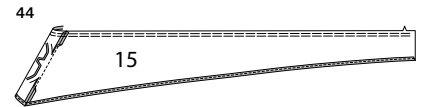
**41.** Pin FRONT RUFFLE 3 (17) to BACK RUFFLE 3 (18), matching single notched edge. Stitch. Trim seams to 1/4" (6mm). Press seams toward back. Stitch front ruffle sections together at double notched edge. Trim seam to 1/4" (6mm). Press seam to one side. **NARROW HEM** lower edge of ruffle. **GATHER** upper edge between the back seamlines. With RIGHT sides together, pin ruffle 3 to skirt in the same manner as ruffle 4 with upper seamline along upper placement line, and matching seamlines.



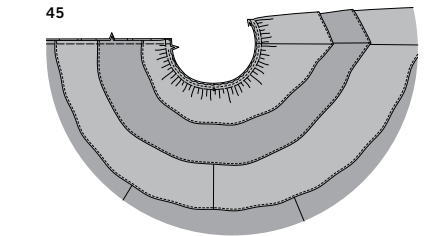
**42.** With **RIGHT** sides together, pin **RUFFLE 2** (16) sections together at double notched edges. Stitch. Trim seam to 1/4" (6mm). Press seam open.  
**NARROW HEM** lower edge of ruffle.  
**GATHER** upper edge between the back seamlines.



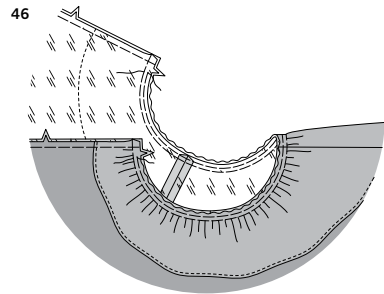
**43.** Pin the **WRONG** side of ruffle 2 to the **RIGHT** side of skirt along upper edge, matching centers and notches, placing small dot at side seam. Pull up gathering stitches. Baste upper and back edges.



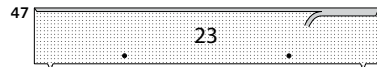
**44.** With **RIGHT** sides together, pin **RUFFLE 1** (15) sections together at double notched edges. Stitch. Trim seam to 1/4" (6mm). Press seam open.  
**NARROW HEM** lower edge of ruffle.  
**GATHER** upper edge between the back seamlines.



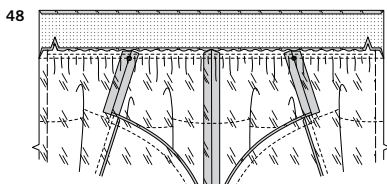
**45.** Pin the **WRONG** side of ruffle 1 to the **RIGHT** side of ruffle 2 along upper edge, matching centers and notches, placing small dot at side seam. Pull up gathering stitches. Baste upper and back edges.



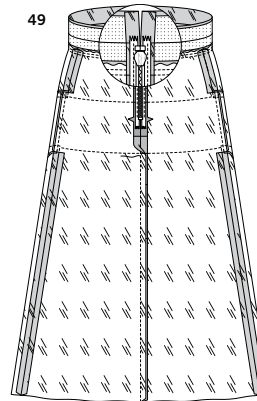
**46.** **GATHER** upper edge of skirt between the notches.  
**TIP** – If you prefer, cut a remnant of 1/2" (1.3cm) or 5/8" (1.5cm) twill tape the length of the waistband. Transfer markings. On **INSIDE**, pin tape to skirt with the inner edge of tape along seamline, pulling up gathering stitches to fit. Baste close to inner edges of tape. This will stabilize the skirt, before attaching to waistband.



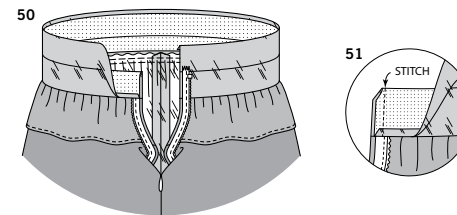
**47.** Press under 5/8" (1.5cm) seam allowance on unmarked edge of **WAISTBAND** (23). Trim to 1/4" (6mm).



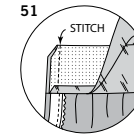
**48.** With **RIGHT** sides together and raw edges even, pin waistband to skirt, matching centers and notches, placing small dots at side seams, pulling up gathering stitches to fit. Stitch. Trim seam. Press waistband out, pressing seam toward waistband.



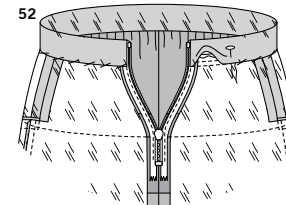
**49.** Stitch center back edges of skirt, from bottom edge to 3" (8cm) below notch. Insert **INVISIBLE ZIPPER**, placing top stop 1/8" (3mm) below foldline marking on waistband.



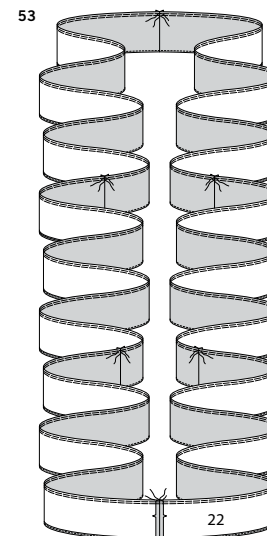
**50.** Open out center back opening edges of skirt, rolling zipper teeth away from opening edge. Fold ends of waistband along foldline bringing **RIGHT** sides together.



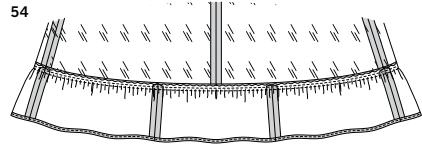
**51.** Pin back opening edges together. Using an adjustable zipper foot, stitch across facing 1/2" (1.3cm) from back edges, keeping zipper teeth free. Trim corners. Do not trim center back edges.



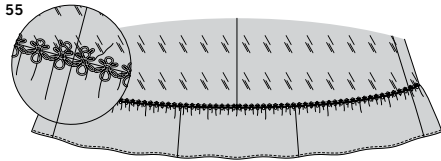
**52.** Turn facing and back edges to **INSIDE**, rolling zipper teeth back in place; press. **SLIPSTITCH** pressed edge of facing to skirt, invisibly. If you prefer, **FINISH** seam allowances of skirt.



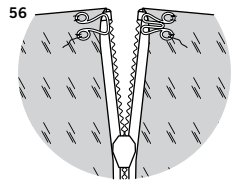
**53.** Stitch the six **LOWER RUFFLE** (22) sections together at ends.  
**NARROW HEM** lower edge of ruffle.  
**GATHER** upper edge between the seamlines.



**54.** With RIGHT sides together and raw edges even, pin lower ruffle to lower edge of skirt, placing seams at centers, and centering middle sections of ruffle over side seams. Pull up gathering stitches to fit, distribute gathers evenly. Baste; stitch. Press seam toward skirt, pressing ruffle out.

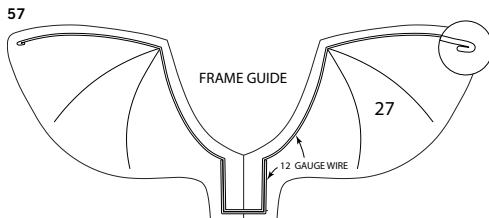


**55.** Cut a piece of 5/8" (1.5cm) flexible trim the length of lower ruffle seam, plus 1" (2.5cm). Hand-sew trim centered along seamline, turning under ends at center back.

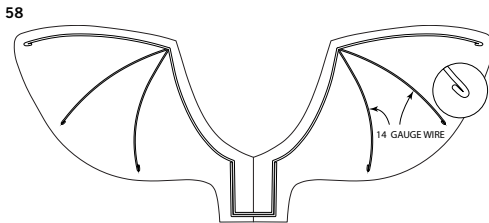


**56.** Hand-sew hook and eye closure to upper edge of waistband.

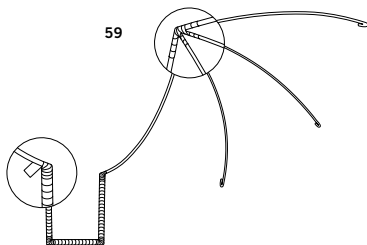
#### COSTUME WINGS



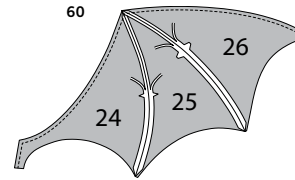
**57.** Using the FRAME GUIDE (27), with a pair of pliers, cut and bend 12-gauge galvanized steel wire to conform to the shape of the top vein and "U" shaped yoke, and the additional "U" shaped yoke, added for strength.



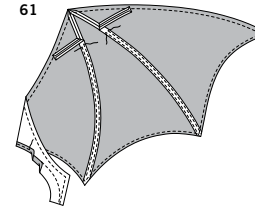
**58.** Cut and bend 14-gauge galvanized steel wire for the four remaining short veins. Bend outer ends of wire to inside, as shown, or use boning caps.



**59.** Join short veins to top vein and join yoke "U" to strengthening "U", by wrapping securely with electrical tape.

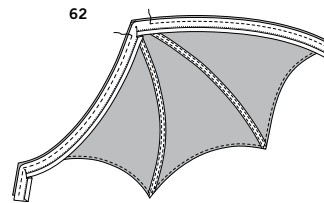


**60.** Pin WING 1 (24) to WING 2 (25) with WRONG sides together, matching single notches. Stitch in a 1/2" (1.3cm) seam. Pin wing 2 to WING 3 (26) with WRONG sides together, matching double notches. Stitch in a 1/2" (1.3cm) seam. Trim seams to a scant 1/4" (6mm). Press seams open. Machine stitch 3/8" (1cm) from upper edge of wing.

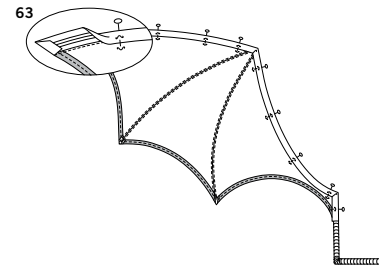


**61.** To make channels for wire, cut a piece of 1/2" (1.3cm) wide single-fold bias tape the length of each seam. On OUTSIDE, center tape on seamlines (over seam allowances) with raw edges meeting at upper part of wing. Stitch close to both long edges. Machine-stitch lower edge of wings along the 1/2" (1.3cm) hem line. On INSIDE, press up hem along machine stitching, to form a **NARROW HEM**, turn under raw edge to meet crease. Stitch close to inner pressed edge.

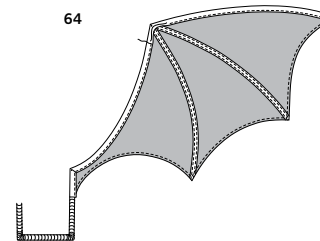
**NOTE:** Double-fold bias tape comes with one side slightly wider than the other.



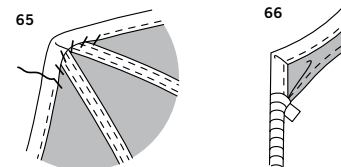
**62.** Cut a piece of 1/2" (1.3cm) wide double-fold bias tape the length of the upper edge of the wing, plus 1" (2.5cm). Open out the narrow edge of the tape and press lightly to maintain the crease. On OUTSIDE, pin tape to upper edge of wing, having raw edges even, lapping ends of wing 1/2" (1.3cm), and folding in fullness at corners. Stitch along crease, breaking stitching at bias tape channels.



**63.** Slide short vein wires of frame through bias channels on wing. Turn under ends of tape. Fold pressed edge of tape to INSIDE; pin, placing pins on OUTSIDE.



**64.** On OUTSIDE, stitch close to seam, breaking stitching at channels, catching in free edge of bias on the INSIDE.



**65.** On INSIDE and OUTSIDE, **SLIPSTITCH** free edges of bias to wings.

**66.** Finish wings by wrapping electrical tape tightly over fabric wing at the "U" of the yoke.



# Congrats!

You've completed your sewing adventure

---

**SHARE  
YOUR** LOOK



Post your pattern and tag us  
[@simplicity\\_creative\\_group](#) and [#simplicitypatterns](#)  
for a chance to be featured on our social media.

Look for more PDF patterns at [simplicity.com](http://simplicity.com)

Have a question or need help with your sewing project call us at  
1-888-588-2700



Simplicity ©2024 a division of IG Design Group Americas Inc. • Atlanta, GA 30342 USA [www.thedesigngroup.com](http://www.thedesigngroup.com) • All Rights Reserved. [www.simplicity.com](http://www.simplicity.com) • Made in the U.S.A. Fabriqué aux États-Unis.

To be used for individual private home use only and not for commercial or manufacturing purposes. • A usage privé seulement et non à des fins commerciales ou de production en série. • Para uso privado solamente, no se puede utilizar con propósitos de comercialización o de producción en serie.