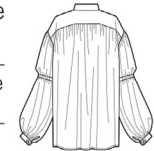


S3062

Simplicity[®] COSTUMES



Average



A



B



C

UNISEX COSTUME SHIRTS

Suggested Fabrics: A,B,C: Cotton/Cotton Blends, Linen, Silk. (Note: On View B, wrong side of fabric will show). **Interfacing:** Lightweight Fusible.

Notions: A,B: Ten ½" (1.3cm) buttons. **Also for A:** 1 yd. (1.0m) of ¾" (1cm) elastic. **C:** Twelve ¾" (1.3cm) buttons.

Sizes		XS	S	M	L	XL	XXL	
		(30-32)	(34-36)	(38-40)	(42-44)	(46-48)	(50-52)	

A,B,C Interfacing - 20" - 1 yd. (51cm - 0.9m)

Shirt A	60"*	3	3	3	3½	3½	3½	Yds.
	150cm*	2.7	2.7	2.7	2.7	2.9	2.9	"
Shirt B	60"*	3¼	3¼	3¼	3¼	3¼	3¼	Yds.
	150cm*	3.0	3.0	3.0	3.0	3.0	3.0	"
Shirt C	60"*	2¾	2¾	2¾	3	3	3	Yds.
	150cm*	2.5	2.5	2.6	2.6	2.7	2.7	"

FINISHED GARMENT MEASUREMENTS (Includes Design and Wearing Ease)

A,B,C Bust/ Chest	48 (122)	52 (132)	56 (142)	60 (152)	64 (163)	68 (173)	Ins. (cm)
-------------------	-------------	-------------	-------------	-------------	-------------	-------------	--------------

Finished back length from base of neck

Shirt A,B,C	32 (83)	32½ (83)	33 (84)	33½ (85)	34 (86)	34½ (88)	Ins. (cm)
-------------	------------	-------------	------------	-------------	------------	-------------	--------------

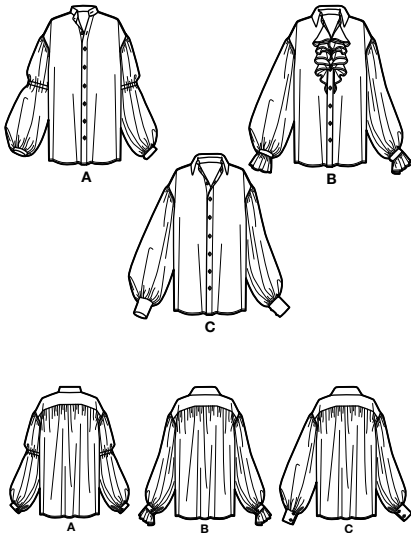
*with nap **without nap

Shop all the pattern brands you love @

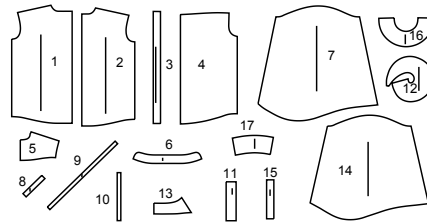
Simplicity[®].com

Simplicity®

Thank you for purchasing this Simplicity pattern.
We made every effort to provide you with a high quality product.



17 PIECES



- 1 Right Front-A,B,C
- 2 Left Front-A,B,C
- 3 Placket-A,B,C
- 4 Back-A,B,C
- 5 Back Yoke-A,B,C
- 6 Neckband-A,B,C
- 7 Sleeve-A
- 8 Continuous Lap-A,B,C
- 9 Sleeve Casing-A
- 10 Guide for Elastic-A
- 11 Cuff-A
- 12 Front Flounce-B
- 13 Collar-B,C
- 14 Sleeve-B,C
- 15 Cuff-B
- 16 Sleeve Flounce-B
- 17 Cuff-C



www.simplicity.com



info@simplicity.com



1-888-588-2700

General Directions

The Pattern

SYMBOLS

- GRAIN LINE Place on straight grain of fabric parallel to selvage
- PLACE SOLID LINE on fold of fabric.
- CENTER FRONT OR BACK of garment.
- NOTCHES
- DOTS
- CUTTING LINE
- LENGTHEN OR SHORTEN LINES

SEAM ALLOWANCE: 5/8" (1.5cm) unless otherwise stated is included but not printed on MULTI-SIZE PATTERNS. Mark your size with colored felt tip pen. See chart on tissue for how to use MULTI-SIZE PATTERNS.

ADJUST IF NEEDED

Make adjustments before placing pattern on fabric.

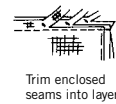
TO LENGTHEN:
Cut pattern between lengthen or shorten lines. Spread pattern evenly, the amount needed and tape to paper.

TO SHORTEN:
At lengthen or shorten lines, make an even pleat taking up amount needed. Tape in place.

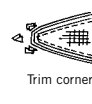
When lengthen or shorten lines are not given, make adjustments at lower edge of pattern.

Sewing

- SEW garment following **Sewing Directions**.
- PIN or machine-baste seams matching notches.
- STITCH 5/8" (1.5 cm) seams unless otherwise stated.
- PRESS seams open unless otherwise indicated clipping when necessary so seams will lie flat.
- TRIM seams to reduce bulk, as shown below.



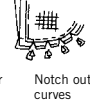
Trim enclosed seams into layers



Trim corners



Clip inner curves



Notch outer curves

Cutting/Marking

BEFORE CUTTING:

PRESS pattern pieces with a warm dry iron. PRE-SHRINK fabric by pre-washing washables or steam-pressing non-washables.

CIRCLE your cutting layout.

PIN pattern to fabric as shown in Cutting Layouts.

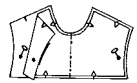
- FOR DOUBLE THICKNESS: Fold fabric with RIGHT sides together.
- FOR SINGLE THICKNESS: Place fabric RIGHT side up.
- FOR PILE, SHADED OR ONE WAY DESIGN FABRICS: Use "with nap" layouts

AFTER CUTTING:

Transfer markings to WRONG side of fabric before removing pattern. Use pin and chalk method or dressmaker's tracing paper and wheel.

To Quick Mark:

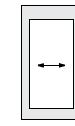
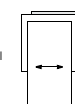
- Snip edge of fabric to mark notches, ends of fold lines and center lines.
- Pin mark dots.



SPECIAL CUTTING NOTES

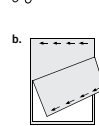
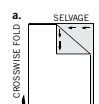
- ★ If layout shows a piece extending past fold, cut out all pieces except piece that extends.

Open out fabric to single thickness. Cut extending piece on RIGHT side of fabric in position shown.

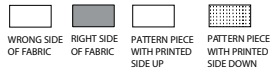


- ✱ Mark small arrows along both selvages indicating direction of nap or design. Fold fabric crosswise with RIGHT sides together, and cut along fold (a).

Turn one fabric layer around so arrows on both layers go in the same direction. Place RIGHT sides together (b).



Cutting Layouts

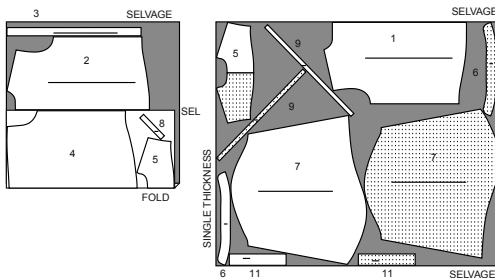


POSITION OF PATTERN PIECES MAY VARY SLIGHTLY ACCORDING TO YOUR PATTERN SIZE

SHIRT A

USE PIECES 1 2 3 4 5 6 7 8 9 11

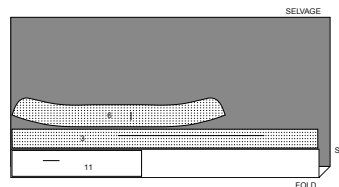
60" (150CM)
WITH NAP
ALL SIZES



INTERFACING A

USE PIECES 3 6 11

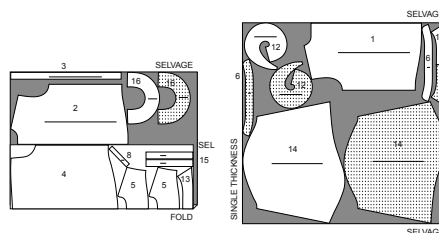
20" (51CM)
ALL SIZES



SHIRT B

USE PIECES 1 2 3 4 5 6 8 12 13 14 15 16

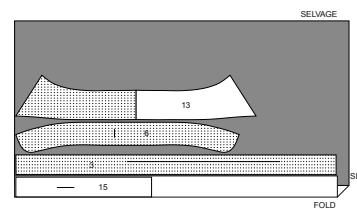
60" (150CM)
WITH NAP
ALL SIZES



INTERFACING B

USE PIECES 3 6 13 15

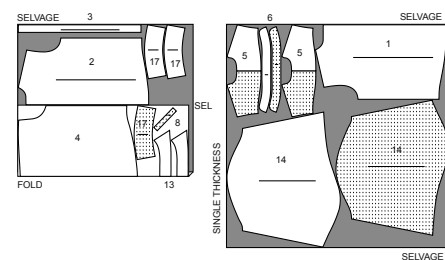
20" (51CM)
ALL SIZES



SHIRT C

USE PIECES 1 2 3 4 5 6 8 12 13 14 17

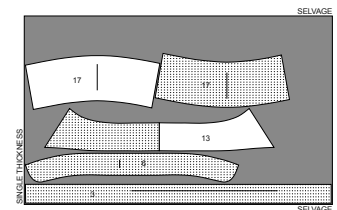
60" (150CM)
WITH NAP
ALL SIZES



INTERFACING C

USE PIECES 3 6 13 17

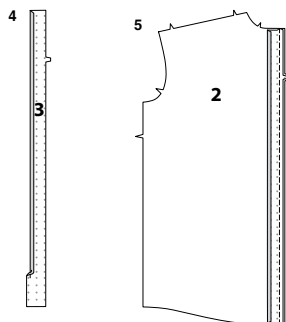
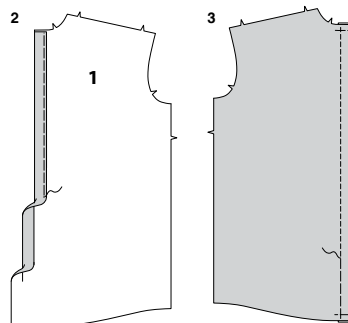
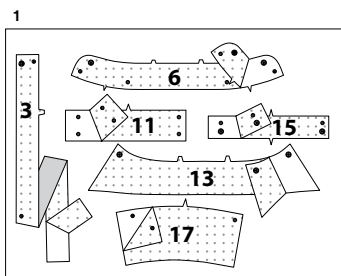
20" (51CM)
ALL SIZES



SEWING TUTORIALS



Build your skills viewing short, easy-to-follow videos at simplicity.com/sewingtutorials



Sewing Directions

FABRIC KEY



Read General Directions on page 1 before you begin.

Sewing methods in **BOLD TYPE** have Sewing Tutorial Video available. Scan **QR CODE** to watch videos:

CONTINUOUS LAP - See how to sew: continuous lap video.

GATHER - See sewing two row gathers video.

NARROW HEM - See sewing narrow hems video.

FRENCH SEAM - See how to sew a french seam video.

EDGE STITCH - See how to edgestitch video.

SLEEVE - See sewing a set in sleeve video.

SLIPSTITCH - See how to sew: a slip stitch video.

STAYSTITCH - See how to do stay-stitching video.

STITCH IN THE DITCH - See how to stitch in the ditch video.

TOPSTITCH - See how to topstitch video.

OPTIONAL FOR HEMS: Apply Seam Binding.

SHIRT A, B, C

INTERFACING

1. Pin **INTERFACING** to wrong side of each matching **FABRIC** section. Fuse, following manufacturer's instructions.

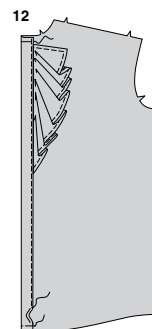
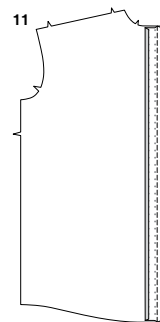
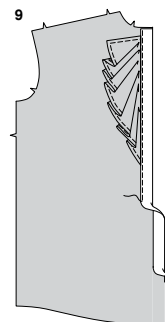
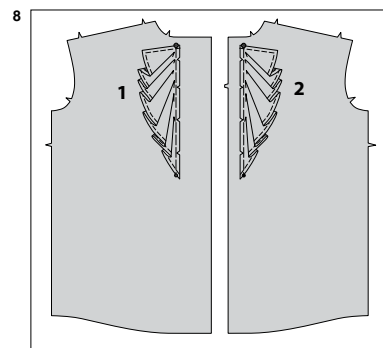
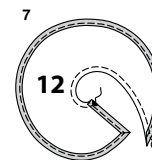
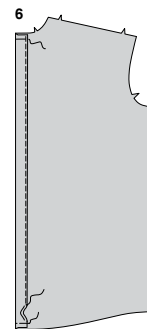
FRONT A, C

2. Fold **RIGHT FRONT (1)** to **INSIDE** along fold line for interfacing. Press. Turn front to **INSIDE** again, along fold line for facing. Baste close to inner pressed edge of facing.

3. On **OUTSIDE**, **TOPSTITCH** as basted. Baste raw edges together.

4. Press under 3/8"(1cm) seam on unmarked edge of **PLACKET (3)**.

5. On **INSIDE**, pin **RIGHT** side of placket to **WRONG** side of **LEFT FRONT (2)**, matching notches, having raw edges even. Stitch in a 3/8"(1cm) seam. Trim seam.



6. Turn placket to **OUTSIDE** along seam line, press. Stitch close to inner pressed edge of placket. Baste upper and lower edges together.

FRONT B

7. **NARROW HEM FRONT FLOUNCE (12)** along outer curved edge and end with large dot. Machine-stitch 1/4"(6mm) along inner curved edge of flounce.

8. On **OUTSIDE**, with **RIGHT** sides facing up, pin flounce to **RIGHT FRONT (1)** and **LEFT FRONT (2)** matching dots, having seamline along placement line. Clipping to stitching along curve, as necessary. Baste.

9. Fold right front to **OUTSIDE** along fold line for interfacing. Press. Turn front to **OUTSIDE** again, along fold line for facing. Stitch close to inner pressed edge of facing, keeping hemmed edge of flounce free.

10. Press under 3/8"(1cm) seam on unmarked edge of **PLACKET (3)**.

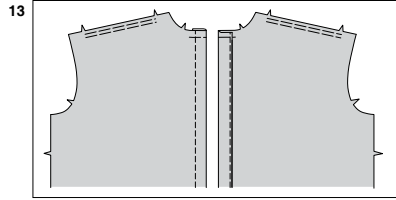
11. On **INSIDE**, pin **RIGHT** side of placket to **WRONG** side of left front, matching notches, having raw edges even. Stitch in a 3/8"(1cm) seam. Trim seam.

12. Turn placket to **OUTSIDE** along seam line covering flounce, press. Stitch close to inner pressed edge of placket, keeping hemmed edge of flounce free. Baste upper and lower edges together.

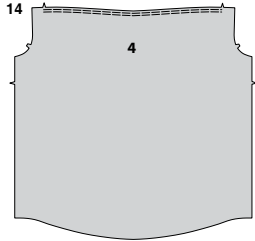
S3062

3 of 4

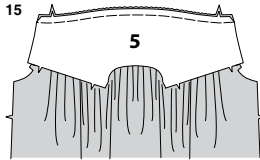
CONTINUE AS FOLLOWS FOR ALL VIEWS



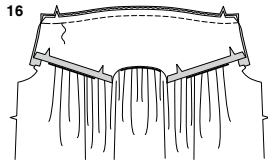
13.GATHER shoulder edges of front sections between notches.



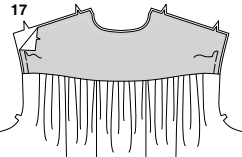
14.GATHER upper edge of BACK (4) between notches.



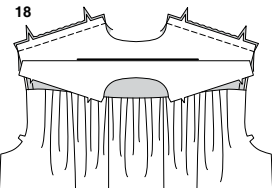
15.With RIGHT sides together, pin BACK YOKE (5) to back matching notches, adjusting gathers to fit. Baste.



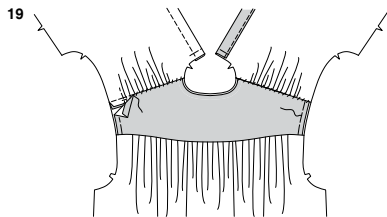
16.Press under seam allowance on shoulder edges of back yoke facing. On INSIDE, pin RIGHT side of yoke facing to WRONG side of back having raw edges even. Baste. Stitch.



17.Press yoke sections up, over seam. Baste raw edges together, basting to within 2"(5cm) of shoulder edges, as shown.



18.With RIGHT sides together, pin shoulder seams together, adjusting gathers to fit. Baste, keeping pressed edge of yoke facing free. Stitch.



19.Press shoulder seam toward back. SLIPSTITCH pressed edge over seam. Baste remaining raw edges, connecting with previous basting.

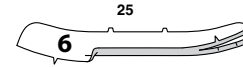
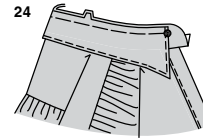
20.STAYSTITCH neck edge of garment in direction of arrows.

21.Clip garment neck edge to stay-stitching. With RIGHT sides together, pin single notched edge of interfaced NECK BAND (6) to neck edge, matching centers back and placing small dots at shoulder seams.
NOTE: Neckband extends 5/8" (1.5cm) beyond front opening edges. Stitch neck edge. Trim seam; clip curves. Press band out; press seam toward band.

VIEW B, C

22.With RIGHT sides together and raw edges even, stitch facing to COLLAR (13), leaving notched edges open. Trim seam and corners.

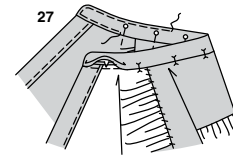
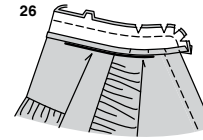
23.Turn collar; press. Baste raw edges together. **EDGE**STITCH finished edges of collar.



24.With RIGHT sides together and raw edges even, pin collar (facing side) to neckband, matching centers back, notches and dots. Baste.

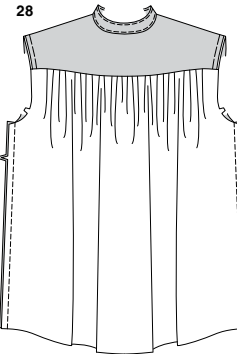
ALL VIEWS

25.Press under 1/2" (1.3cm) on single notched edge of neckband facing; trim to 1/4" (6mm).



26.With RIGHT sides together, pin neckband facing to neck band (over collar for **View B, C**), matching centers. Stitch front and double notched edge. Trim seam; clip curves.

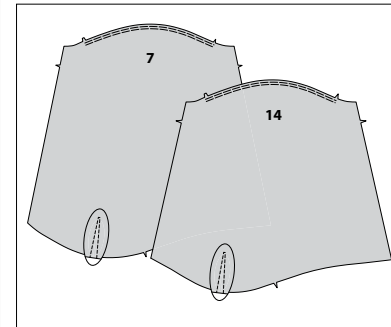
27.Turn band facing to INSIDE; press. Pin pressed edge of facing over seam, placing pins on OUTSIDE. On OUTSIDE, stitch close to all edges of neckband, catching in pressed edge of facing on INSIDE.



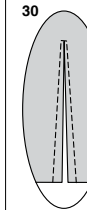
28.Stitch front to back at sides.

SLEEVES

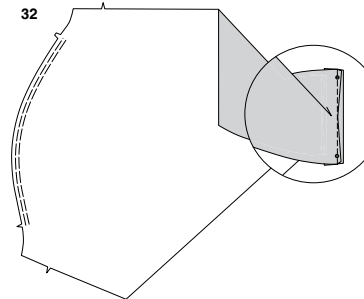
29



29.GATHER upper edge of SLEEVE (7 OR 14) between notches. To make slash opening at lower edge of sleeve, stitch along stitching lines. Pivot and take one small stitch across the point.



30.Slash between stitching, being careful not to slash through the stitch at the point.

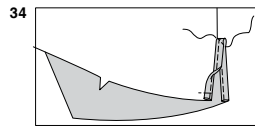
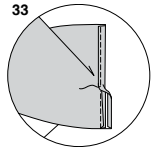


31.Stitch along stitching line on CONTINUOUS LAP (8).
TIP: for more assistance see how to sew: continuous lap video.

32.Spread slashed edges of sleeve apart so that they form a straight line. Pin RIGHT side of lap to WRONG side of sleeve, baste lap to slashed edges, matching stitching lines and small dots. Stitch along stitching line.

S3062

4 of 4



- 33.** Press lap out, pressing seam toward lap.
Press under 1/4" (6mm) on remaining long edge of lap.
Stitch pressed edge over seam.

- 34.** Press front portion of lap to OUTSIDE; baste in place across lower edge. On INSIDE Stitch across upper edge of fold diagonally, as shown.

VIEW A

- 35.** Press under 1/4" (6mm) on outer edges of SLEEVE CASING (9).

- 36.** On INSIDE, pin lower edge of casing to sleeve, placing pressed edges along placement line.
EDGESTITCH long edges of casing, keeping ends free.

- 37.** Cut a piece of elastic the length of GUIDE FOR ELASTIC (10). Insert elastic through opening in casing, matching seam allowances. Stitch across ends of elastic. Trim away elastic close to stitching.

ALL VIEWS

- 38.** With RIGHT sides together, stitch underarm seam of sleeve sections.
GATHER lower edge of sleeve between opening edges.
OPTIONAL: Stitch under arm seam in a **FRENCH SEAM**. See how to sew a French seam video for more assistance.

VIEW A

- 39.** Press under 1/2" (1.3cm) on unnotched edge of CUFF (11); trim to 1/4" (6mm).
With RIGHT sides together, pin sleeve to cuff, placing opening edges at small dots, matching notches. Pull up gathering stitches to fit. Baste. Stitch. Trim seam.

- 40.** Press seam toward cuff, pressing cuff out.
Fold cuff in half with RIGHT sides together. Stitch ends. Trim seams and corners.

- 41.** Turn cuff to INSIDE; press. Pin pressed edges of extensions together and pressed edge of cuff over seam, placing pins on OUTSIDE.
On OUTSIDE, **STITCH IN THE DITCH** or "groove" of seam, catching in pressed edge of cuff on INSIDE.
SLIPSTITCH extension edges together.

- 42.** Make buttonholes at markings.
On OUTSIDE, sew buttons to front end of cuff at small dots.

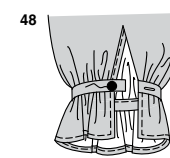
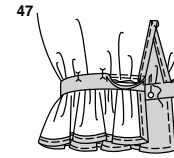
VIEW B

- 43.** With RIGHT sides together, pin sleeve to interfaced CUFF (15), placing opening edges at small dots, matching notches. Pull up gathering stitches to fit. Baste. Stitch. Trim seam. Press seam toward cuff, pressing cuff out.

- 44. NARROW HEM** unmarked and side edges of SLEEVE FLOUNCE (16).
GATHER upper edge between large dots.

- 45.** With RIGHT sides together, pin flounce to cuff matching notches and large dots. Adjust gathers to fit. Baste.

- 46.** Press under 1/2" (1.3cm) on notched edge of cuff facing. With RIGHT sides together, pin facing to cuff (over flounce), having raw edges even. Stitch. Trim seam and corners, keeping flounce free.



- 47.** Turn cuff facing to INSIDE; press. Pin pressed edges of extensions together and pressed edge of cuff over seam, placing pins on OUTSIDE.
On OUTSIDE, **STITCH IN THE DITCH** or "groove" of seam, catching in pressed edge of cuff on INSIDE.
SLIPSTITCH extension edges together.

- 48.** Make buttonholes at markings.
On OUTSIDE, sew buttons to front end of cuff at small dots.

VIEW C

- 49.** Press under 1/2" (1.3cm) on notched edge of CUFF (17) facing; trim to 1/4" (6mm). With RIGHT sides together, stitch facing to cuff, leaving notched edge open. Trim seam and corners.

- 50.** Turn cuff; press. With RIGHT sides together, pin sleeve to cuff, placing opening edges at small dots, matching notches. Pull up gathering stitches to fit. Baste. Stitch, keeping facing free. Trim seam.

- 51.** Press seam toward cuff, pressing cuff out.
Pin pressed edges of extensions together and pressed edge of cuff over seam, placing pins on OUTSIDE.
On OUTSIDE, **STITCH IN THE DITCH** or "groove" of seam, catching in pressed edge of cuff on INSIDE.
SLIPSTITCH extension edges together.

- 52.** Make buttonholes in cuff at markings.
On OUTSIDE, sew buttons to front end of cuff at small dots.

CONTINUE AS FOLLOWS FOR ALL VIEWS

- 53.** Turn sleeve RIGHT side out.
Hold garment WRONG side out with armhole toward you. With RIGHT sides together, pin sleeve to armhole edge, matching underarm seams, notches and small dots. Pull up gathering stitches to fit.
To distribute fullness evenly, slide fabric along bobbin threads. Baste. Stitch. Stitch again 1/8" (3mm) from first stitching. Trim seam below notches close to stitching. Press only the seam allowance.
TIP: For more assistance see sewing a set in sleeve video.

- 54.** Machine-baste 5/8" (1.5cm) from lower edge of garment. Press up hem along basting. **NARROW HEM** lower edge of shirt, easing in fullness if necessary.
OPTIONAL: **EDGESTITCH** front opening edges of garment.

- 55.** Make buttonholes in LEFT placket at markings. Lap LEFT over RIGHT matching centers. Hand-sew buttons under button holes.



Congrats!

You've completed your sewing adventure

SHARE YOUR LOOK



Post your pattern and tag us
[@simplicity_creative_group](#) and [#simplicitypatterns](#)
for a chance to be featured on our social media.

Look for more PDF patterns at [simplicity.com](https://www.simplicity.com)

Have a question or need help with your sewing project call us at
1-888-588-2700



Simplicity ©2024 a division of IG Design Group Americas Inc. • Atlanta, GA 30342 USA www.thedesigngroup.com • All Rights Reserved. www.simplicity.com • Made in the U.S.A. Fabriqué aux États-Unis.

To be used for individual private home use only and not for commercial or manufacturing purposes. • A usage privé seulement et non à des fins commerciales ou de production en série. • Para uso privado solamente, no se puede utilizar con propósitos de comercialización o de producción en serie.