

S3059

**Simplicity**<sup>®</sup>

Clothes Fit Dolls 18in. (45.5cm)



Shop all the pattern brands you love @

**Simplicity**<sup>®</sup>.com

Average

**18" (46CM) DOLL CLOTHES**

**Suggested Fabrics:** A,B,E in Broadcloth, Cotton Types, Flannel, Linen Types. C,D in Cotton Interlock, Fleece, Jerseys, Lightweight Sweatshirt Fleece, Microfleece.

**Notions:** A,B,C,D: ½" (1.3cm) hook and loop tape: ¼ yd. (0.2m) for A,B, ⅜ yd. (0.3m) for C, ½ yd. (0.4m) for D. **Also for A:** ⅜ yd. (0.6m) of 1" (2.5cm) pre-gathered eyelet, one 1" (2.5cm) daisy appliqué, 1 ½ yd. (1.1m) of ¾" (5cm) flat eyelet. **Also for A,C:** ½ yd. (0.4m) of ¼" (6mm) elastic. **Also for B:** 1 ¾ yd. (1.6m) of 1" (2.5cm) flat lace, 1 yd. (0.9m) of ⅜" (1cm) grosgrain ribbon, three 3/16" (5mm) beads. **Also for C,D:** One small appliqué or iron-on transfer.

**Pajamas A**

45\*\* - ½ yd. (115cm\* - 0.5m)

**Nightgown B**

45\*\* - ½ yd. (115cm\* - 0.3m)

**Loungewear C**

60\*\* - ⅝ yd. (150cm\* - 0.6m)

**Contrast (Leggings)**

60\*\* - ⅝ yd. (150cm\* - 0.3m)

**Hoodie D**

60\*\* - ⅝ yd. (150cm\* - 0.6m)

**Robe E (includes belt)**

45\*\* - ½ yd. (115cm\* - 0.6m)

\*with nap \*\*without nap



A



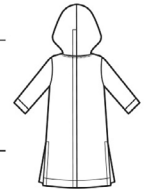
B



C



D



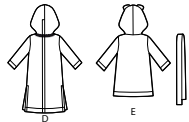
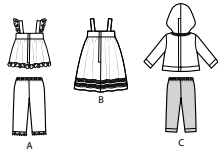
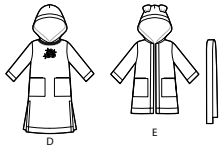
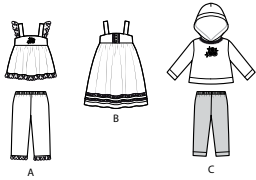
E



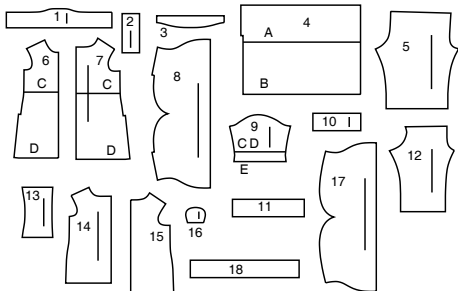
E

# Simplicity® S3059

Thank you for purchasing this Simplicity pattern.  
We made every effort to provide you with a high quality product.

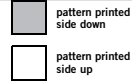


18 PIECES



- |                      |                      |
|----------------------|----------------------|
| 1 BODICE - A,B       | 10 SLEEVE BAND - C,D |
| 2 STRAP - A,B        | 11 LOWER BAND - C    |
| 3 GUIDE FOR TRIM - A | 12 LEGGINGS - C      |
| 4 SKIRT - A,B        | 13 POCKET - D,E      |
| 5 PANTS - A          | 14 FRONT - E         |
| 6 FRONT - C,D        | 15 BACK - E          |
| 7 BACK - C,D         | 16 EAR - E           |
| 8 HOOD - C,D         | 17 HOOD - E          |
| 9 SLEEVE - C,D,E     | 18 BELT - E          |

## Cutting Layouts



POSITION OF PATTERN PIECES MAY VARY SLIGHTLY ACCORDING TO YOUR PATTERN SIZE

### General Directions For Cutting

**PRE-SHRINK** and iron all fabric.

**FOR DOUBLE THICKNESS** -Fold fabric with RIGHT sides together. Pin pattern to WRONG side of fabric.

**FOR SINGLE THICKNESS** -Pin pattern to RIGHT side of fabric.

★ If layout shows a piece extending past fold, cut out all pieces except piece that extends. Open out fabric to single thickness. Cut extending piece on RIGHT side of fabric in position shown.

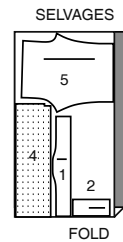
✱ Mark small arrows along both selvages in dictating direction of nap or design. Fold fabric crosswise with RIGHT sides together, and cut along fold. Turn one fabric layer around so arrows on both layers go in the same direction. Place RIGHT sides together.

### PAJAMAS A

USE PIECES 1 2 4 5

PIECE 3 IS CUT OF PRE-GATHERED EYELET TRIM

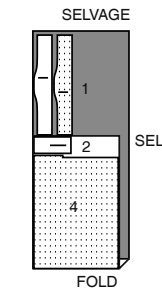
45" (115CM)  
WITH NAP



### NIGHTGOWN B

USE PIECES 1 2 4

45" (115CM)  
WITH NAP

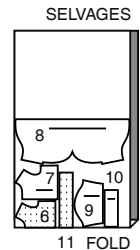


### LOUNGEWEAR C

USE PIECES 6 7 8 9 10 11

CUT ONE OF PIECE 8

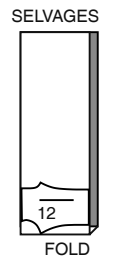
60" (150CM)  
WITH NAP



### CONTRAST C (LEGGINGS)

USE PIECE 12

60" (150CM)  
WITH NAP

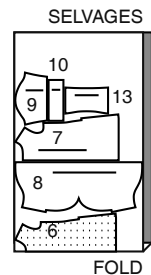


### HOODIE D

USE PIECES 6 7 8 9 10 13

CUT ONE OF PIECE 8

60" (150CM)  
WITH NAP

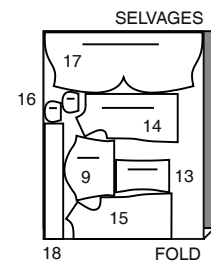


### ROBE E (INCLUDES BELT)

USE PIECES 9 13 14 15 16 17 18

CUT ONE OF PIECE 17

45" (115CM)  
WITH NAP

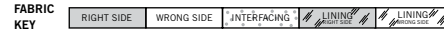


## SEWING TUTORIALS



Build your skills viewing short, easy-to-follow videos at [simplicity.com/sewingtutorials](http://simplicity.com/sewingtutorials)

## Sewing Directions



Read General Directions on page 1 before you begin.

## VIDEO SEWING METHODS

Sewing methods shown in **BOLD TYPE** have Sewing Tutorial Video available. Scan QR CODE to watch videos:

**EASE/GATHER** - See **Gathering**: "sewing two row gathers" video.

**FINISH** - See **Seams**: "how to finish seam allowances" video.

**SLIPSTITCH** - See **Hand Stitching**: "how to slip stitch" video.

**TOPSTITCH** - See **Machine Stitches**: "how to topstitch" video.

## SIMPLY THE BEST TECHNIQUES FOR KNITS

- Use a ball point or stretch needle.
- Stretch knits need seams that are supple enough to "give" with the fabric. You can sew them with straight stitches (stretching the fabric slightly as you sew), narrow zig-zag stitches or one of the stretch stitches built into many conventional machines, or on your serger.

**PATTERN PIECES WILL BE IDENTIFIED BY NUMBERS THE FIRST TIME THEY ARE USED.**

**STITCH 1/4"(6MM) SEAMS UNLESS OTHERWISE INDICATED.**

## PAJAMAS A, NIGHTGOWN B

**NOTE:** *The first view mentioned will be shown, unless otherwise stated.*

## VIEW A

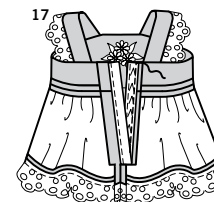
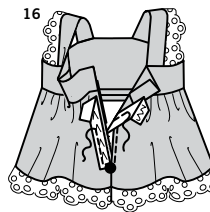
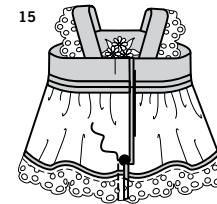
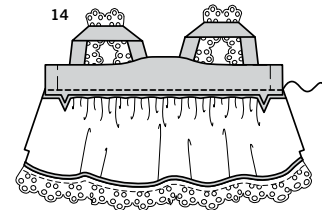
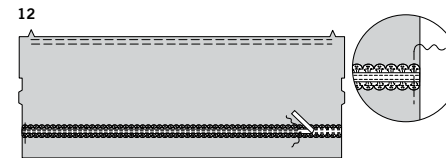
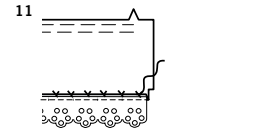
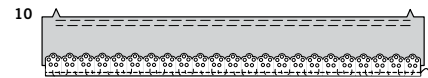
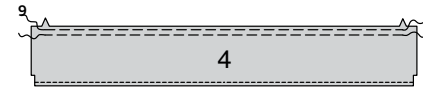
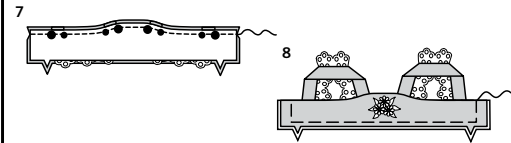
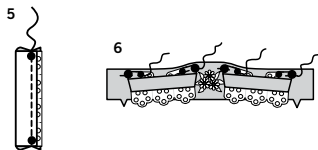
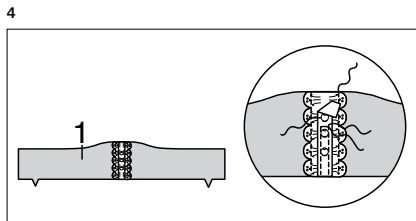
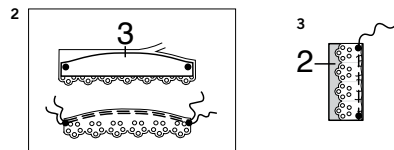
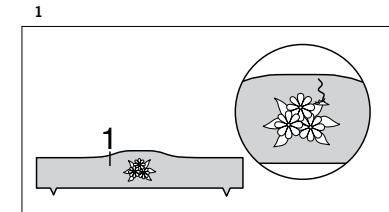
1. Hand sew applique to BODICE (1) at center front.
2. Cut two pieces of 3/4"(2cm) wide flat eyelet using GUIDE FOR TRIM (3), placing straight, unmarked edge of guide along scalloped edge of trim. GATHER upper edge of trim between small dots.
3. Pin eyelet to one long edge of STRAP (2), RIGHT sides together, matching small dots. Adjust gathers. Baste.

## VIEW B

4. With RIGHT sides up, pin one piece of 1"(2.5cm) wide lace to BODICE (1), centered over center front with ends of lace even with upper and lower edges of bodice. Stitch long edges of lace in place. Center 3/8"(1cm) wide ribbon over center front of bodice on top of lace, having ends even with raw edges. Stitch close to long edges of ribbon. Hand sew three beads to center of ribbon, placing top and bottom bead about 1" from raw edges and centering remaining bead between the two.

## VIEWS A, B

5. Fold STRAP (2) in half lengthwise, RIGHT sides together, with raw edges even, matching small dots. Stitch.
6. Turn strap RIGHT sides out. Press. On OUTSIDE, pin ends of strap to embellished bodice, matching large and small dots, having raw edges even. Baste. Remaining bodice will be used as facing.



7. Pin FACING to bodice, over straps, RIGHT sides together, matching centers, and large and small dots. Stitch upper edge.

8. Turn facing to inside, turning strap out. Press. Baste raw edges together.

9. GATHER upper edge of SKIRT (4) between notches. FINISH lower edge of skirt.

## VIEW A

10. With RIGHT sides together, pin pre-gathered eyelet to lower edge of skirt having bound edge of trim just over seam line in seam allowance. Stitch along seamline.

11. Turn lower edge of skirt to INSIDE along seamline, turning trim out. Hand sew seam allowance in place.

## VIEW B

12. Place lower edge of 1"(2.5cm) wide lace along placement line on SKIRT (4), having ends even with raw edges. Stitch close to long edges of lace. Center 3/8"(1cm) wide ribbon over lace. Stitch close to long edges of ribbon. Baste ends.

13. Turn up a 3/4"(2cm) hem on lower edge of skirt. Press. Turn in 1/4"(6mm) on raw edge. Press. Stitch close to inner pressed edge.

## VIEWS A, B

14. Pin skirt to lower edge of bodice, RIGHT sides together, matching centers and notches. Adjust gathers. Stitch.

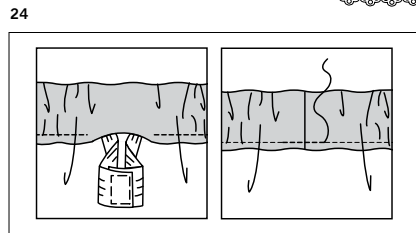
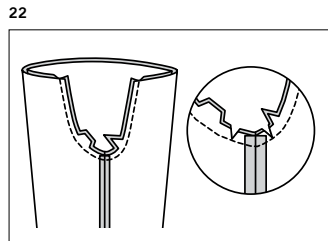
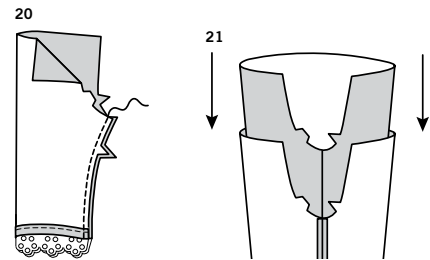
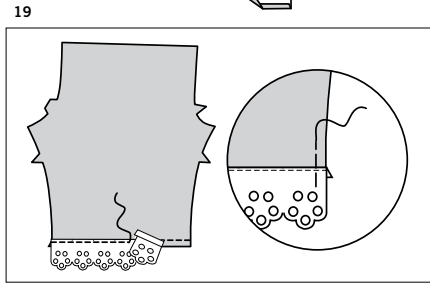
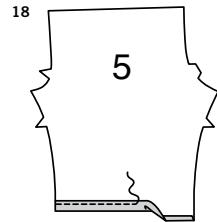
15. Stitch center back seam below large dot.

16. Cut one piece of hook and loop tape the length of back opening edge between upper edge of bodice and large dot. Separate tape.

On OUTSIDE, pin hook (rough) half to LEFT back opening edge seam allowance, with one long edge along center back. Stitch tape close to inner long edge, squaring stitching at ends.

Press under RIGHT back opening edge along center back. With RIGHT sides up, pin pressed edge of RIGHT back 1/8"(3mm) over long edge of loop (soft) half of tape. (Note that the loop side extends beyond the back opening.) Stitch close to pressed edge of right back.

17. Turn LEFT back opening edge to INSIDE along center back. Stitch close remaining long edge of tape.

**VIEW A, PANTS**

**18.** Press under 3/4" (2cm) on lower edge of PANTS (5). Press under 1/4" (6mm) on raw edge. Stitch close to inner pressed edge.

**19.** Cut two pieces of 3/4" (2cm) wide flat eyelet the length of lower edge of each pant leg. Press under 1/4" (6mm) on flat edge of eyelet. On OUTSIDE, pin eyelet to lower edge of each pant leg, RIGHT sides up, having pressed edge of eyelet along hem stitching on pants and ends even with raw edges of pants. Stitch close to upper edge of eyelet. Baste ends.

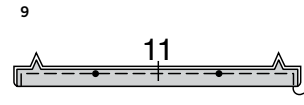
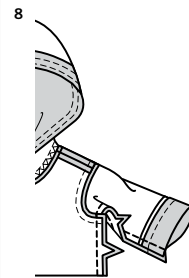
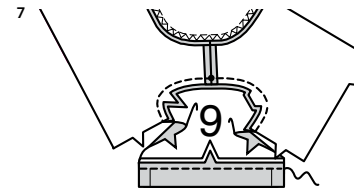
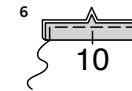
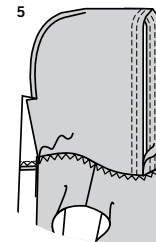
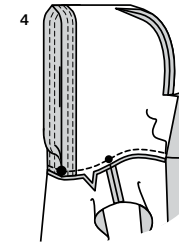
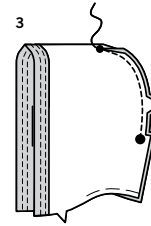
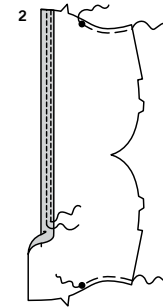
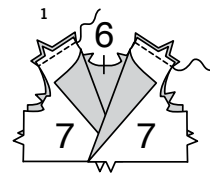
**20.** Stitch inner leg seam of each pants section.

**21.** Turn one pant leg RIGHT side out and the other WRONG side out. With RIGHT sides together, insert one leg INSIDE the other.

**22.** With RIGHT sides together, pin center seam, matching inner leg seams and notches. Stitch. Make a few clips along the curved edges, as shown, being careful not to clip through the stitching.

**23.** **FINISH** upper edge of pants. Press under 5/8" (1.5cm) on upper edge, forming casing. Stitch 1/4" (6mm) from raw edge, leaving an opening to insert elastic.

**24.** Cut a piece of 1/4" (6mm) wide elastic 11" (27cm) long. Insert elastic through casing. Overlap ends 1/4" (6mm). Stitch ends of elastic together securely. Stitch opening closed. Distribute fullness evenly.

**LOUNGEWEAR C, HOODIE D**

**NOTE:** The first view mentioned will be shown, unless otherwise stated.

**1.** Pin FRONT (6) to BACK (7) at shoulders, matching notches. Stitch.

**2.** **EASE** neck edge of HOOD (8) between center back and small dot. Press under front edge of hood along foldline. Stitch close to raw edge and 1/4" (6mm) away from first stitching, as shown.

**3.** Pin dart seam in hood matching notches, and large and small dots. Stitch from large dot to small dot. Press seam open.

**4.** Pin hood to neck edge of front and back matching notches, center backs, large dots, and small dots to shoulder seams. Adjust ease. Stitch. Turn seam toward front and back.

**5.** On OUTSIDE, stitch front and back close to neck seam in a wide zig zag stitch.

**6.** With WRONG sides together, fold SLEEVE BAND (10) along foldline, matching notches and having raw edges even. Baste.

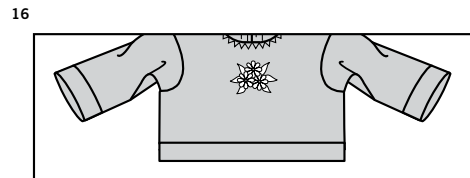
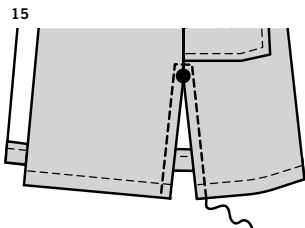
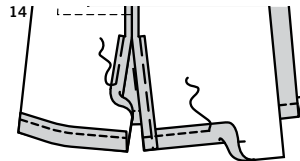
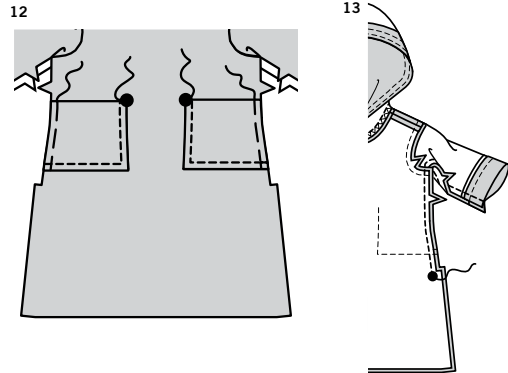
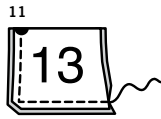
**7.** Pin sleeve band to lower edge of SLEEVE (9), matching notches. Stitch. Press seam toward sleeve. Pin sleeve to garment, RIGHT sides together, matching notches, and small dot to shoulder seam. Stitch. Press seam toward sleeve.

**VIEW C**

**8.** With RIGHT sides together, pin front to back at entire underarm seam, matching armhole seam and notches. Stitch.

**9.** With WRONG sides together, fold LOWER BAND (11) along foldline, matching notches and small dots. Baste.

**10.** On OUTSIDE, pin lower band to lower edge of garment, matching centers, notches, and small dots to side seams. Stitch. Press seam toward garment.

**VIEW D:**

**11.** With RIGHT sides together, fold POCKET along foldline having raw edges even. Stitch side with large dot and lower edges. Trim corner.

**12.** Turn pocket RIGHT side out. Press. Baste side edges together. Pin pocket to front along pocket line matching large dots, having raw edges even. **TOPSTITCH** pocket 1/4" (6mm) from side and lower edges. Baste raw edges together.

**13.** With RIGHT sides together, pin front to back at entire underarm seam, matching armhole seam and notches. Stitch from lower edge of sleeve band to large dot, backstitching at large dot to reinforce.

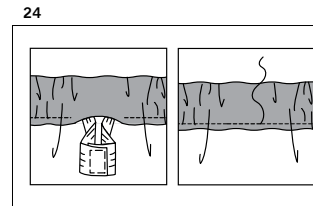
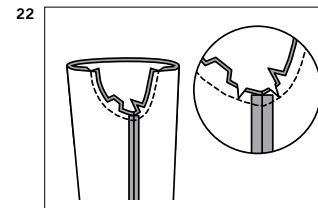
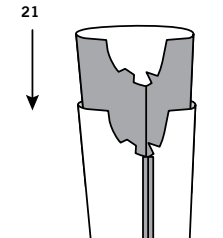
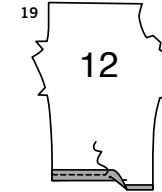
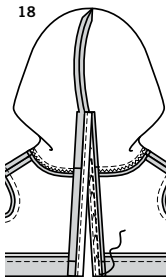
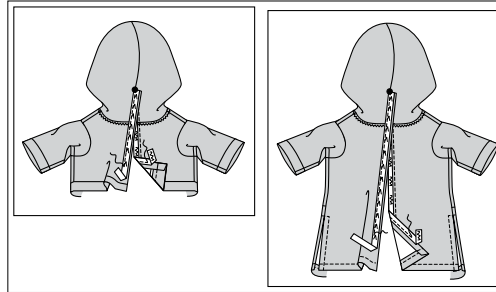
**14.** Turn up 3/4" (2cm) hem on lower edge of hoodie. Stitch 1/4" (6mm) from raw edge. Turn side opening edge to INSIDE along foldlines. Baste.

**15.** **TOPSTITCH** 1/4" (6mm) from opening edges, squaring stitching above large dot.

**VIEWS C, D**

**16.** Attach applique or apply iron on transfer to center front, or where desired, following manufacturer's directions.

17



**17.** Cut one piece of hook and loop tape the length of back opening edge between large dot on hood to lower edge of garment. Separate tape.

On OUTSIDE, pin hook (rough) half to LEFT back opening edge seam allowance, with one long edge along center back. Stitch tape close to inner long edge, squaring stitching at ends. Press under RIGHT back opening edge along center back. With RIGHT sides up, pin pressed edge of RIGHT back 1/8" (3mm) over long edge of loop (soft) half of tape. (Note that the loop side extends beyond the back opening. Stitch close to pressed edge.

**18.** Turn LEFT back opening edge to INSIDE along center back. Stitch close remaining long edge of tape.

**VIEW C LEGGINGS**

**19.** Press under 3/4" (2cm) on lower edge of LEGGINGS (12). Stitch 1/4" (6mm) from raw edge.

**20.** Stitch inner leg seam of each pants section.

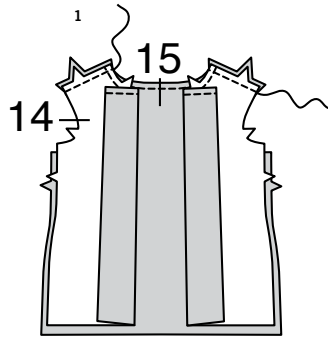
**21.** Turn one leg RIGHT side out and the other WRONG side out. With RIGHT sides together, insert one leg INSIDE the other.

**22.** With RIGHT sides together, pin center seam, matching inner leg seams and notches. Stitch. Make a few clips along the curved edges, as shown, being careful not to clip through the stitching.

**23.** **FINISH** upper edge of pants. Press under 5/8" (1.5cm) on upper edge, forming casing. Stitch 1/4" (6mm) from raw edge, leaving an opening to insert elastic.

**24.** Cut a piece of 1/4" (6mm) wide elastic 11" (27cm) long. Insert elastic through casing. Overlap ends 1/4" (6mm). Stitch ends of elastic together securely. Stitch opening closed. Distribute fullness evenly.

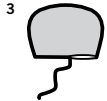
## ROBE AND BELT E



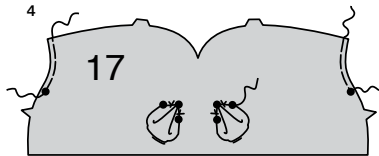
1. Machine-stitch neck edge of FRONT(14) and BACK (15) 1/4"(6mm) from neck edge. Stitch front to back at shoulders.



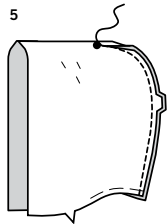
2. Turn under lower edge of each EAR (16) along seamline. Press. For each ear, stitch two ear sections, RIGHT sides together, leaving lower edge open.



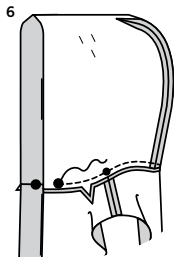
3. Turn ear RIGHT sides out. SLIPSTITCH pressed edges together.



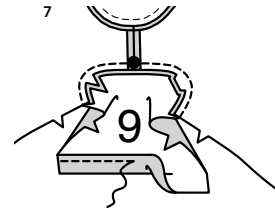
4. Hand sew ears to OUTSIDE of HOOD (17) matching small dots. EASE neck edge of hood between center back and small dot.



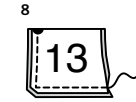
5. Pin dart seam in hood, matching notches, and large and small dots. Stitch ending at small dot.



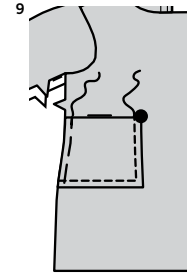
6. With RIGHT sides together, pin hood to front and back matching notches, center backs, large dots, and small dots to shoulder seams. Adjust ease. Stitch. Press seam toward robe.



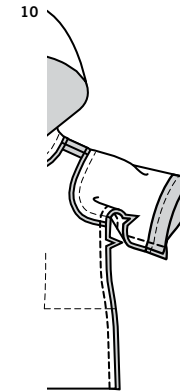
7. Turn up 3/4"(2cm) hem on lower edge of SLEEVE (9). Press. Stitch 1/4"(6mm) from raw edge. Pin sleeve to armhole matching notches and large dot to shoulder seam. Stitch. Press seam toward garment.



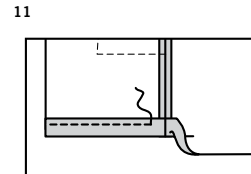
8. With WRONG sides together, fold POCKET along foldline having raw edges even. Stitch side with large dot and lower edges. Trim corners.



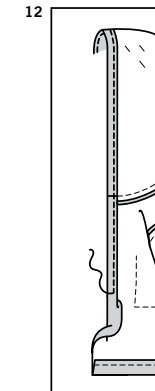
9. Turn pocket RIGHT side out. Press. Pin pocket to front along pocket line matching large dots, having side edges even. TOPSTITCH pocket 1/4"(6mm) from side and lower edges. Baste raw edges together.



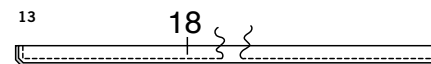
10. With RIGHT sides together, pin front to back at entire underarm seam, matching armhole seam and notches. Stitch from lower edge of sleeve to lower edge of garment.



11. Turn up 3/4"(2cm) hem on lower edge of robe. Press. Stitch 1/4"(6mm) from raw edge.



12. Turn under 3/4"(2cm) on front opening edges. Press. Turn under 1/4"(6mm) on raw edge. Press. Stitch close to inner pressed edge.



13. Fold BELT (18) in half lengthwise, RIGHT sides together. Stitch, leaving an opening for turning. Trim corners.



14. Turn RIGHT side out, turning in opening edges. Press. SLIPSTITCH opening closed.



# Congrats!

You've completed your sewing adventure

---

**SHARE  
YOUR** LOOK



Post your pattern and tag us  
[@simplicity\\_creative\\_group](#) and [#simplicitypatterns](#)  
for a chance to be featured on our social media.

Look for more PDF patterns at [simplicity.com](https://www.simplicity.com)

Have a question or need help with your sewing project call us at  
1-888-588-2700



Simplicity ©2024 a division of IG Design Group Americas Inc. • Atlanta, GA 30342 USA [www.thedesigngroup.com](http://www.thedesigngroup.com) • All Rights Reserved. [www.simplicity.com](http://www.simplicity.com) • Made in the U.S.A. Fabriqué aux États-Unis.

To be used for individual private home use only and not for commercial or manufacturing purposes. • A usage privé seulement et non à des fins commerciales ou de production en série. • Para uso privado solamente, no se puede utilizar con propósitos de comercialización o de producción en serie.