

S3054

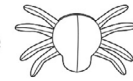
Simplicity[®]



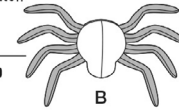
Shop all the pattern brands you love @

Simplicity[®].com

Average



A



B



C



D



E



F

PLUSH BUGS

Suggested Fabrics: A, B, B Contrast 2, C, D, E, F: Fleece. **Contrast A, B Contrast 1:** Long Pile Fleece, Sherpa. **C, D Contrast 1, E, F:** Metallic Iridescent Spandex. **C, D Contrast 2:** Cotton/Cotton Blends. **Appliqués A, B, C:** Felt. **Interfacing E, F:** Poly Fleece.

Notions: A, B, C, D, E, F: Polyester Fiberfil. **Also for A:** Pair of 10mm and 15mm safety eyes. **Also for B:** Pair of 12mm and 15mm safety eyes. **Also for C:** Pair of 12mm safety eyes, 5" (12cm) length of 2mm rattail cord. **Also for D:** Pair of 12mm safety eyes. **Also for E, F:** Pair of 10mm safety eyes, 1/8" (3mm) metallic ribbon: 7" (18cm) length for E, 10" (25cm) length for F.

Spider A

60"* - 3/4 yd. (150cm* - 0.3m)

Contrast A, B Contrast 1 (Body Top) - 3" x 14" (8cm x 36cm) remnant

Eye Appliqué A, B - 3" x 3" (8cm x 8cm) in each of felt and paper-backed fusible web remnants

Spider B

60"* - 3/4 yd. (150cm* - 0.3m)

Contrast 2 (Legs): 60"* - 3/4 yd. (150cm* - 0.3m)

Lady Bug C

60"* - 3/4 yd. (150cm* - 0.3m)

Contrast 1, 2 (Wings) - 5" x 12" (13cm x 30cm) remnant each

Spot Appliqué: 4" x 5" (10cm x 13cm) remnant in each of felt and paper-backed fusible web

Beetle D

60"* - 3/4 yd. (150cm* - 0.3m)

Contrast 1 (Wings, Horn) - 5" x 13" (13cm x 38cm) remnant

Contrast 2 (Wings) - 5" x 12" (13cm x 30cm) remnant

Pill Bug E

60"* - 3/4 yd. (150cm* - 0.3m)

Contrast (Body Top) - 4" x 13" (10cm x 33cm) remnant

Interfacing E, F - 4" x 13" (10cm x 33cm) remnant

Scorpion F

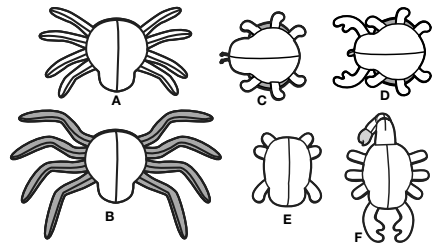
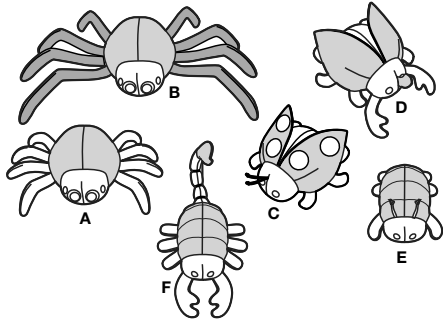
60"* - 3/4 yd. (150cm* - 0.3m)

Contrast (Body Top, Stinger) - 4" x 17" (10cm x 43cm) remnant

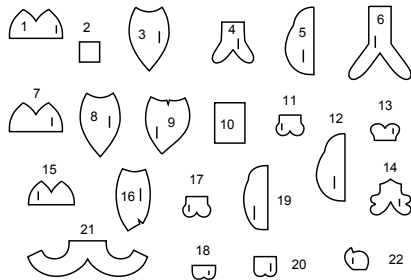
*with nap **without nap

Simplicity® S3054

Thank you for purchasing this Simplicity pattern. We made every effort to provide you with a high quality product.

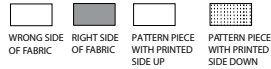


22 PIECES



- 1 HEAD - A,B
- 2 EYE APPLIQUE - A,B
- 3 BODY TOP - A,B
- 4 LEG - A
- 5 BODY BOTTOM - A,B
- 6 LEG - B
- 7 HEAD - C,D
- 8 BODY TOP - C,D
- 9 WING - C,D
- 10 SPOT APPLIQUE - C
- 11 LEG - C,D
- 12 BODY BOTTOM - C,D
- 13 HORN - D
- 14 PINCHER - D,F
- 15 HEAD - E,F
- 16 BODY TOP - E,F
- 17 LEG - E
- 18 REAR LEG - E
- 19 BODY BOTTOM - E,F
- 20 LEG - F
- 21 TAIL - F
- 22 STINGER - F

Cutting Layouts



POSITION OF PATTERN PIECES MAY VARY SLIGHTLY ACCORDING TO YOUR PATTERN SIZE

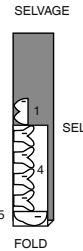
General Directions For Cutting

- PRE-SHRINK and iron all fabric.
- FOR DOUBLE THICKNESS -Fold fabric with RIGHT sides together. Pin pattern to WRONG side of fabric.
- FOR SINGLE THICKNESS -Pin pattern to RIGHT side of fabric.
- ★ If layout shows a piece extending past fold, cut out all pieces except piece that extends. Open out fabric to single thickness. Cut extending piece on RIGHT side of fabric in position shown.
- ✱ Mark small arrows along both selvages in dictating direction of nap or design. Fold fabric crosswise with RIGHT sides together, and cut along fold. Turn one fabric layer around so arrows on both layers go in the same direction. Place RIGHT sides together.

SPIDER A

USE PIECES 1 4 5

60" (150CM) WITH NAP



CONTRAST A, B CONTRAST 1 (BODY TOP)

CUT TWO OF PIECE 3 REMNANT

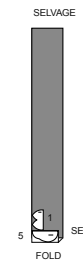
EYE APPLIQUE A, B

CUT ONE OF PIECE 2 FROM FELT AND PAPER BACKED FUSIBLE WEB REMNANTS

SPIDER B

USE PIECES 1 5

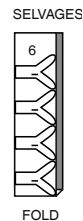
60" (150CM) WITH NAP



B CONTRAST 2 (LEG)

USE PIECE 6

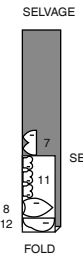
60" (150CM) WITH NAP



LADY BUG C

USE PIECES 7 8 11 12

60" (150CM) WITH NAP



CONTRAST 1, 2 (WINGS)

CUT TWO OF PIECE 9 EACH FROM TWO DIFFERENT REMNANTS

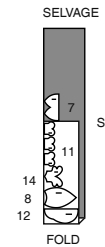
SPOT APPLIQUE

CUT ONE OF PIECE 10 FROM FELT AND PAPER BACKED FUSIBLE WEB REMNANTS

BEETLE D

USE PIECES 7 8 11 12 14

60" (150CM) WITH NAP



D CONTRAST 1 (WINGS, HORN)

CUT TWO OF PIECE 9 AND ONE OF PIECE 13 FROM REMNANT

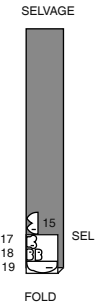
CONTRAST 2 (WINGS)

CUT TWO OF PIECE 9 FROM REMNANT

PILL BUG E

USE PIECES 15 17 18 19

60" (150CM) WITH NAP



CONTRAST E (BODT TOP)

CUT TWO OF PIECE 16 FROM REMNANT

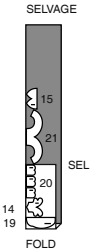
INTERFACING E, F

CUT TWO OF PIECE 16 FROM INTERFACING REMNANT

SCORPION F

USE PIECES 14 15 19 20 21

60" (150CM) WITH NAP



CONTRAST F (BODY TOP, STINGER)

CUT TWO OF PIECES 16 22 FROM REMNANT

Sewing Directions

FABRIC KEY: RIGHT SIDE, WRONG SIDE, INTERFACING, LINING, Lining

Read **General Directions** before you begin.

Sewing terms appearing in **BOLD TYPE** in Sewing Instructions are explained below.

DART SEAM- On **INSIDE**, bring broken lines together, matching small dots. Stitch along broken line from raw edge to point. Press dart seam open.

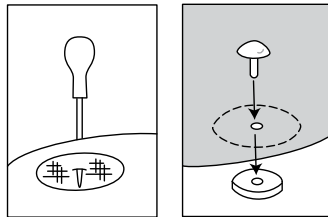
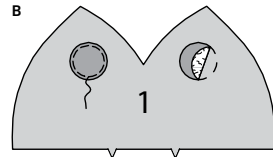
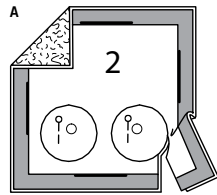
EASESTITCH - Loosen needle tension slightly. With **RIGHT** side up, stitch 1/8" (3mm) from cut edge using a long stitch.

SLIPSTITCH - Slide needle through a folded edge, then pick up a thread of underneath fabric.

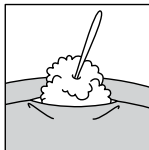
SEWING TUTORIALS



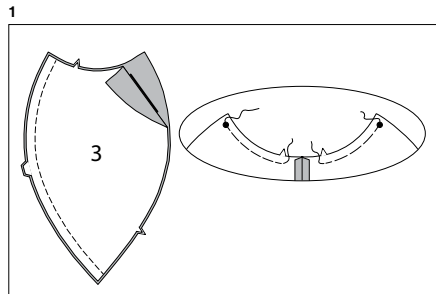
Build your skills viewing short, easy-to-follow videos at simplicity.com/sewingtutorials



SAFETY EYES



STUFF



GENERAL DIRECTIONS FOR APPLIQUES PREPARING APPLIQUES

A. Apply paper backed fusible web to **WRONG** side of applique fabric, following manufacturer's directions. Cut applique tissue block along outer solid line. Pin pattern to **RIGHT** side of prepared fabric. Cut out each applique. Transfer markings to **RIGHT** side of applique using a washable fabric marking pen or pencil.

APPLYING APPLIQUES

B. Pin applique(s) to project centering along broken lines. Be sure to clear all seam allowances, when necessary. A glue stick can be used to temporarily hold the applique(s) in place before stitching. Fuse appliques in place, following manufacturer's directions. Straight OR Zig-zag (satin) stitch along raw edges or use fabric paint to seal the edges. Allow paint to dry before you continue.

NOTE: Applique stitching will not be shown in further illustrations.

GENERAL DIRECTIONS FOR SAFETY EYES

SAFETY EYES - Before stitching seams, reinforce eyes or nose area so that the plastic eyes and nose don't pull through the fabric, cut 1" (2.5cm) circles from remnants of fusible interfacing. Fuse circles to **WRONG** side of head underneath small dots for eyes or nose, following manufacturer's directions.

To attach each eye or nose, using a sharp pointed object or an awl, poke a hole at small dots. Insert the eye or nose shank through the opening from **OUTSIDE** and on **INSIDE** secure in place with washer making sure it is on securely.

GENERAL DIRECTIONS FOR STUFFING

STUFF- Pull fiberfill apart and fluff it before you use it. Break apart the lumps and thick spots. This will help to create a smoother looking project.

Use pieces about the size of a tennis ball. Pack into place using the end of a long handled wooden spoon or chop-stick.

Use small pieces and pack into place using the end of a crochet hook or chop-stick.

Pack firmly in place each time stuffing is added. Use both hands to mold and shape, being careful not to over stuff or make lopsided.

PATTERN PIECES WILL BE IDENTIFIED BY NUMBERS THE FIRST TIME THEY ARE USED.

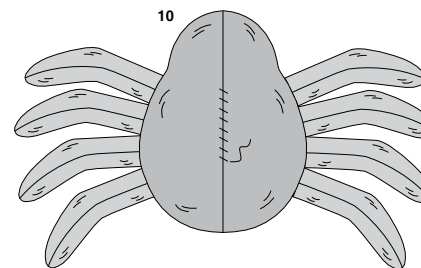
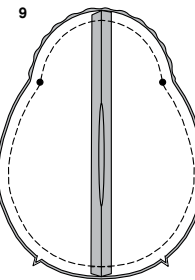
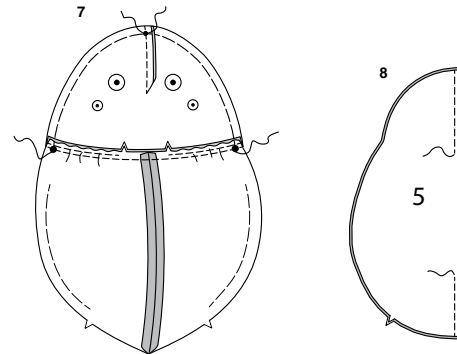
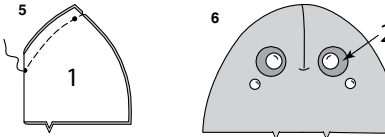
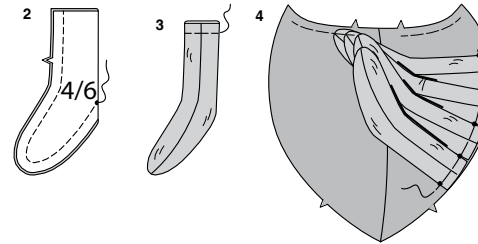
STITCH SEAMS WITH RIGHT SIDES TOGETHER UNLESS OTHERWISE STATED.

NOTE: ALL SEAMS ARE 1/4"(6MM) UNLESS OTHERWISE INDICATED.

VIEW A, B

NOTE: *View A* will be shown unless otherwise indicated.

- With **RIGHT** sides together, stitch center back seam of **BODY TOP** (3).
EASESTITCH between large dot and notch.



- Construct **eight legs** as follows:
Fold **LEG** (4 OR 6) in half, matching small dots, having raw edges even. Stitch outer edges ending at small dot.

- Turn leg **RIGHT** side out, press, pressing leg along fold lines, bringing seams toward center. Lightly **STUFF**. Baste raw edges together.

- On **OUTSIDE**, pin legs to body matching small dots. Baste.

- Stitch **DART SEAM** in **HEAD** (1) section.

- PREPARE EYE APPLIQUE** (2). **APPLY** applique to head. Apply **SAFETY EYES** to applique and head at markings.

- With **RIGHT** sides together, pin head to neck edge of body top, matching notches, and large dots. Adjust ease-stitching to fit. Baste. Stitch.
EASESTITCH side edges of head, between small dot at center and large dots at seam.

- With **RIGHT** sides together, stitch center front seam in **BODY BOTTOM** (5) sections, leaving an opening between notches. Back-stitch at notches to reinforce seam.

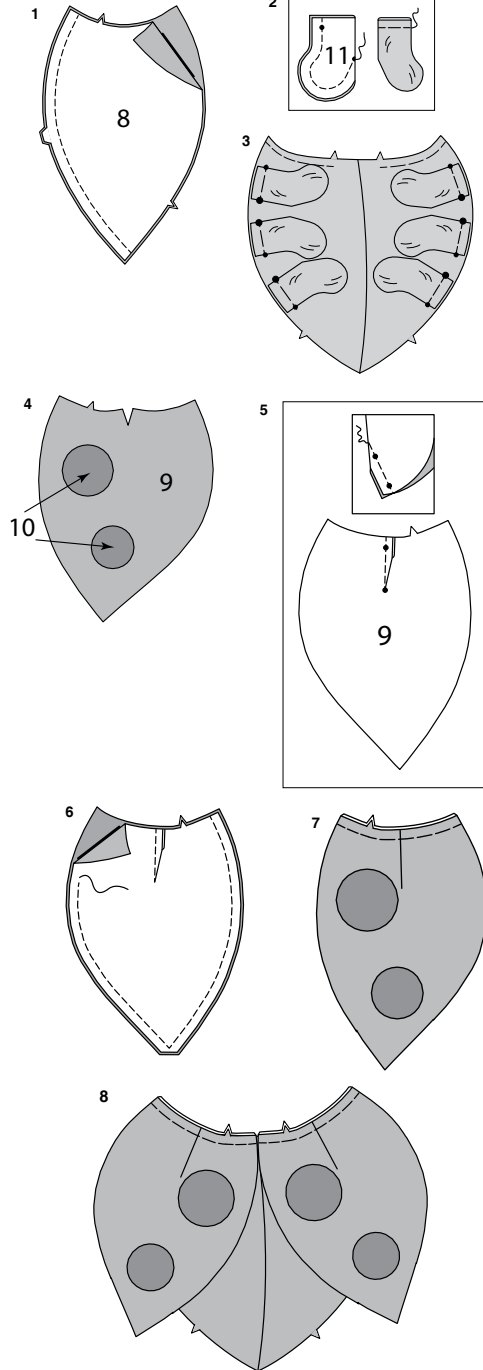
- With **RIGHT** sides together, pin body bottom to top, having raw edges even matching large dots. Adjust ease-stitches to fit. Baste. Stitch.

- Turn bug **RIGHT** side out. Press. **STUFF**.
SLIPSTITCH opening closed.

S3054

3 of 4

VIEW C, D

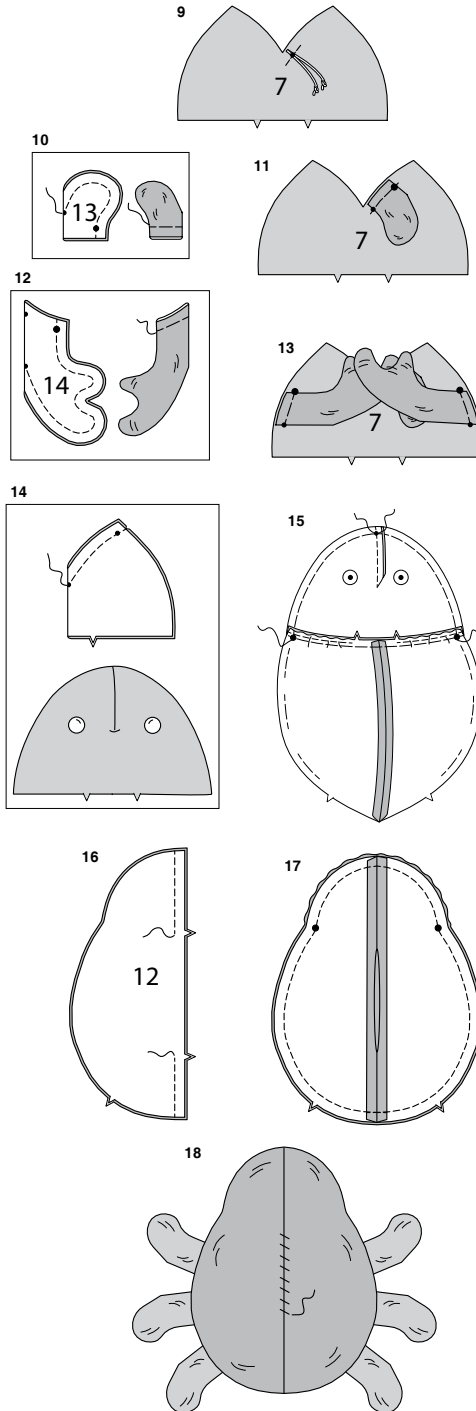
NOTE: *View C will be shown unless otherwise indicated.*

- With **RIGHT** sides together, stitch center back seam of **BODY TOP** (8).
- Construct six legs as follows:**
Fold **LEG** (11) sections in half matching small dots. Stitch seam ending at small dot. Turn leg **RIGHT** side out. Press. Lightly **STUFF**. Baste raw edges together.
- On **OUTSIDE**, pin legs to body top, matching large and small dots. Baste.
- VIEW C- PREPARE SPOT APPLIQUE (10).** APPLY applique to **WING** (9) centering edges along broken lines.
NOTE: This will be the top of the wing.

VIEW C, D

- Stitch **DART SEAMS** in **WING** (9) sections.

- With **RIGHT** sides together, stitch wing sections together along outer edge, having raw edges even, leaving notched edge of wing open. Trim corners.
- Turn wing **RIGHT** side out. Press. Baste raw edges together.
- on **OUTSIDE**, pin wings to body top matching large dots and notches. Baste raw edges together. **EASESTITCH** neck edge between large dot and notch.



- VIEW C-Cut** two pieces of satin cord each measuring approximately 2"(5cm). Knot one end of cords. On **OUTSIDE**, pin cord to **HEAD** (7) centering ends over small dot, as shown. Hand-baste.

VIEW D

- Fold **HORN** (13) in half matching small dots. Stitch seam ending at small dot. Turn horn **RIGHT** side out. Press. Lightly **STUFF**. Baste raw edges together.
- On **OUTSIDE**, pin horn to **HEAD** (7) matching small and large dots, as shown. Baste.
- Fold **PINCHER** (14) in half along fold line, matching large dots. Stitch seam ending at small dot. Turn pinchers **RIGHT** side out. Press. Lightly **STUFF**. Baste raw edges together.
- On **OUTSIDE**, pin pinchers to each side of head matching small and large dots, as shown. Baste.

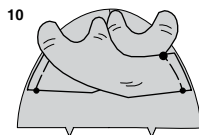
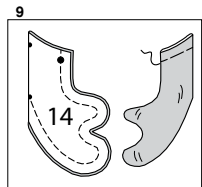
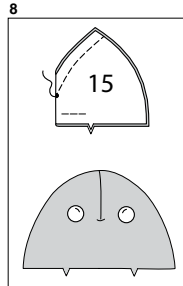
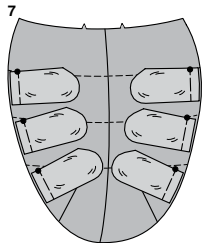
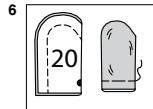
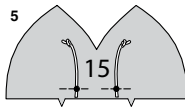
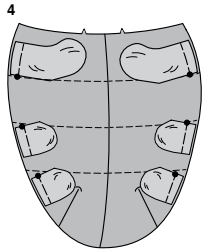
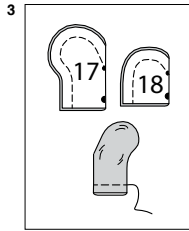
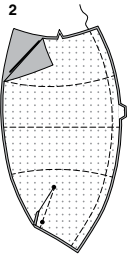
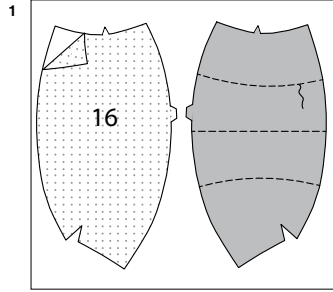
VIEW C, D

- Stitch **DART SEAM** in head section, keeping pinchers free for **View D**. Apply **SAFETY EYES** to head at markings.
- With **RIGHT** sides together, pin head to neck edge of body top, matching notches, and large dots. Adjust ease-stitching to fit. Baste. Stitch. **EASESTITCH** side edge of head, between small dot at center and large dots at seam.
- With **RIGHT** sides together, stitch center front seam in **BODY BOTTOM** (12) sections, leaving an opening between notches. Back-stitch at notches to reinforce seam.
- With **RIGHT** sides together, pin body bottom to top, having raw edges even matching large dots. Adjust ease-stitches to fit. Baste. Stitch.

- Turn bug **RIGHT** side out. Press. **STUFF**. **SLIPSTITCH** opening closed.

S3054

4 of 4



VIEW E, F

NOTE: View E will be shown unless otherwise indicated.

1. Pin interfacing to WRONG side of BODY TOP (16) sections. Fuse interfacing in place following manufacturer's directions. On OUTSIDE, **TOPSTITCH** along stitching lines, as shown.

2. Stitch **DART SEAM** in body top sections. With RIGHT sides together, stitch center back seam of body top sections.

VIEW E

3. Construct two legs and four rear legs as follows: Fold LEG (17) and REAR LEG (18) sections in half, lengthwise along center dot marking, having raw edges even. Stitch outer edge ending at small dot. Turn legs RIGHT side out. Press. Lightly **STUFF**. Baste raw edges together.
4. On OUTSIDE, pin leg to body top at upper edge, matching large dots, having curved edge facing front, as shown. Baste. Pin remaining rear legs to lower edge of body, matching large dots. Baste.
5. Cut two pieces of metallic ribbon each measuring approximately 1-1/2"(3.8cm). Knot one end of ribbon. On OUTSIDE, pin ribbon to HEAD (15) centering ends over small dots, as shown. Hand-baste.

VIEW F

6. Construct six legs as follows: Fold LEG (20) sections in half, lengthwise along center dot marking. Stitch outer edge ending at small dot. Turn legs RIGHT side out. Press. Lightly **STUFF**. Baste raw edges together.

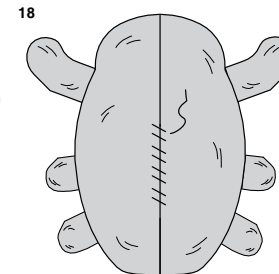
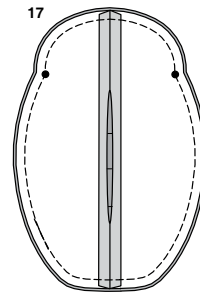
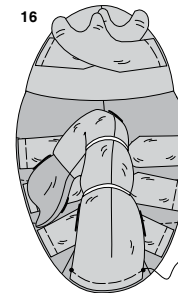
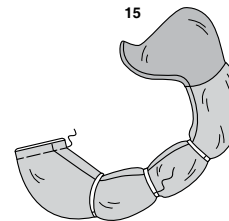
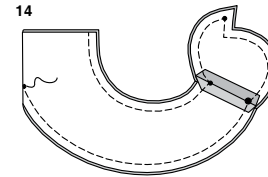
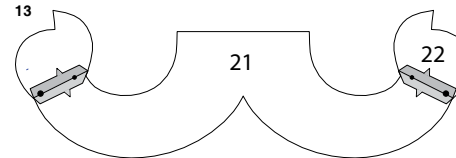
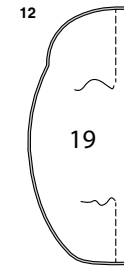
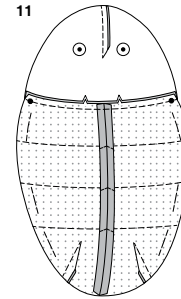
7. On OUTSIDE, pin legs to body top matching large dots, having point of seam facing toward back, as shown. Baste.

8. **VIEW E, F:** Stitch **DART SEAM** in HEAD (15). Apply **SAFETY EYES** to head at markings.

VIEW F

9. Fold PINCHER (14) in half along fold line, matching large dots. Stitch seam ending at small dot. Turn pinchers RIGHT side out. Press. Lightly **STUFF**. Baste raw edges together.

10. On OUTSIDE, pin pinchers to each side of head matching small and large dots, as shown. Baste.



VIEW E, F

11. With RIGHT sides together, pin head to neck edge of body, matching notches and large dots. Stitch.
12. With RIGHT sides together, stitch center front seam of BODY BOTTOM (19) sections, leaving an opening between notches. Back-stitch at notches to reinforce seam.

VIEW F

13. Pin STINGER (22) sections to each side of TAIL (21) section, matching markings. Stitch. Trim seam.

14. With RIGHT sides together, fold tail matching small dots, having raw edges even. Stitch inner edge. Stitch outer edge, ending at small dot.

15. Turn tail RIGHT side out, press, pressing tail along fold line, bringing seams toward center. Lightly **STUFF** tail. Baste raw edges together. Cut three pieces of metallic ribbon each measuring 2-1/4"(5.7cm), 2-3/8"(6cm) and 3"(7.5cm). Wrap ribbon around tail along corresponding placement lines, overlapping ends, lightly pushing stuffing out of the way. Pull ribbon tight to form indent. Hand-sew or glue ends of ribbon in place securely.

16. On OUTSIDE, pin tail to lower edge of body matching small dots. Baste.

VIEW E, F

17. With RIGHT sides together, pin body bottom to top, having raw edges even matching large dots. Baste. Stitch.

18. Turn bug RIGHT side out. Press. **STUFF**. **SLIPSTITCH** opening closed.



Congrats!

You've completed your sewing adventure

**SHARE
YOUR** LOOK



Post your pattern and tag us
[@simplicity_creative_group](#) and [#simplicitypatterns](#)
for a chance to be featured on our social media.

Look for more PDF patterns at [simplicity.com](https://www.simplicity.com)

Have a question or need help with your sewing project call us at
1-888-588-2700



Simplicity ©2024 a division of IG Design Group Americas Inc. • Atlanta, GA 30342 USA www.thedesigngroup.com • All Rights Reserved. www.simplicity.com • Made in the U.S.A. Fabriqué aux États-Unis.

To be used for individual private home use only and not for commercial or manufacturing purposes. • A usage privé seulement et non à des fins commerciales ou de production en série. • Para uso privado solamente, no se puede utilizar con propósitos de comercialización o de producción en serie.