

S3051

Simplicity®

1970s  
Vintage

easy-to-sew



Very Easy

## MISSES' APRON IN TWO LENGTHS

**Suggested Fabrics:** Batiste, Canvas, Chintz, Cotton Broadcloth, Cotton Sateen, Dotted Swiss, Duck, Gingham, Lawn, Muslin, Organdy, Ticking, Voile. **View 1** also in Even Lengthwise Striped Fabric. **View 2** Contrast also in Eyelet.

**Notions:** **View 1:** 3¾ yds. (3.4m) of jumbo rick rack.

Sizes	S	M	L
European	8-10 34-36	12-14 38-40	16-18 42-44

## View 1 Apron - Even Lengthwise Striped or Plain Fabric

45"*	2½	2½	2½	Yds.
60"*	1½	2	2½	"
115cm*	2.5	2.6	2.6	m
150cm*	1.7	1.8	2.1	"

## View 2 Apron

45"*	3	3½	3½	Yds.
60"*	2½	2½	2½	"
115cm*	2.7	2.9	2.9	m
150cm*	2.3	2.3	2.4	"

## Contrast (Pocket, Waistband, Tie End, Ruffle)

45/60"	1½	1½	1½	Yds.
115/150cm*	1.3	1.3	1.4	m

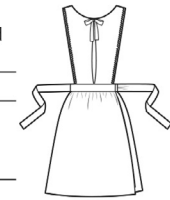
## FINISHED GARMENT MEASUREMENTS (Includes Design and Wearing Ease)

## Width, lower edge

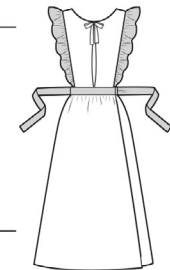
<b>View 1 Apron</b>	50½ (128)	54½ (138)	58½ (149)	Ins. (cm)
<b>View 2 Apron</b>	53½ (136)	57½ (146)	61½ (156)	Ins. (cm)

## Finished back length from base of neck

<b>View 1 Apron</b>	34 (86)	34½ (88)	35 (89)	Ins. (cm)
<b>View 2 Apron</b>	48 (122)	48½ (123)	49 (124)	Ins. (cm)



1



2

\*with nap \*\*without nap

Shop all the pattern brands you love @

Simplicity®.com

Simplicity  
by design

Simplicity ©2024 a division of IG Design Group Americas Inc. • Atlanta, GA 30342 USA www.thedesigngroup.com • All Rights Reserved. www.simplicity.com • Made in the U.S.A. Fabriqué aux États-Unis.

To be used for individual private home use only and not for commercial or manufacturing purposes. • A usage privé seulement et non à des fins commerciales ou de production en série. • Para uso privado solamente, no se puede utilizar con propósitos de comercialización o de producción en serie.

## metric chart converting inches and yards to centimeters and meters

STANDARD	Bust	Waist	Hip	Length	Size	Small	Medium	Large	Extra Large
80-83	87-92	67-71	92-97	102-107	10-12	12-14	14-16	16-18	18-20
84-87	92-97	71-76	97-102	107-112	12-14	14-16	16-18	18-20	20-22
88-91	97-102	76-81	102-107	112-117	14-16	16-18	18-20	20-22	22-24
92-95	102-107	81-86	107-112	117-122	16-18	18-20	20-22	22-24	24-26
96-99	107-112	86-91	112-117	122-127	18-20	20-22	22-24	24-26	26-28
100-103	112-117	91-96	117-122	127-132	20-22	22-24	24-26	26-28	28-30
104-107	117-122	96-101	122-127	132-137	22-24	24-26	26-28	28-30	30-32
108-111	122-127	101-106	127-132	137-142	24-26	26-28	28-30	30-32	32-34
112-115	127-132	106-111	132-137	142-147	26-28	28-30	30-32	32-34	34-36
116-119	132-137	111-116	137-142	147-152	28-30	30-32	32-34	34-36	36-38
120-123	137-142	116-121	142-147	152-157	30-32	32-34	34-36	36-38	38-40
124-127	142-147	121-126	147-152	157-162	32-34	34-36	36-38	38-40	40-42
128-131	147-152	126-131	152-157	162-167	34-36	36-38	38-40	40-42	42-44
132-135	152-157	131-136	157-162	167-172	36-38	38-40	40-42	42-44	44-46
136-139	157-162	136-141	162-167	172-177	38-40	40-42	42-44	44-46	46-48
140-143	162-167	141-146	167-172	177-182	40-42	42-44	44-46	46-48	48-50
144-147	167-172	146-151	172-177	182-187	42-44	44-46	46-48	48-50	50-52
148-151	172-177	151-156	177-182	187-192	44-46	46-48	48-50	50-52	52-54
152-155	177-182	156-161	182-187	192-197	46-48	48-50	50-52	52-54	54-56
156-159	182-187	161-166	187-192	197-202	48-50	50-52	52-54	54-56	56-58
160-163	187-192	166-171	192-197	202-207	50-52	52-54	54-56	56-58	58-60
164-167	192-197	171-176	197-202	207-212	52-54	54-56	56-58	58-60	60-62
168-171	197-202	176-181	202-207	212-217	54-56	56-58	58-60	60-62	62-64
172-175	202-207	181-186	207-212	217-222	56-58	58-60	60-62	62-64	64-66
176-179	207-212	186-191	212-217	222-227	58-60	60-62	62-64	64-66	66-68
180-183	212-217	191-196	217-222	227-232	60-62	62-64	64-66	66-68	68-70
184-187	217-222	196-201	222-227	232-237	62-64	64-66	66-68	68-70	70-72
188-191	222-227	201-206	227-232	237-242	64-66	66-68	68-70	70-72	72-74
192-195	227-232	206-211	232-237	242-247	66-68	68-70	70-72	72-74	74-76
196-199	232-237	211-216	237-242	247-252	68-70	70-72	72-74	74-76	76-78
200-203	237-242	216-221	242-247	252-257	70-72	72-74	74-76	76-78	78-80
204-207	242-247	221-226	247-252	257-262	72-74	74-76	76-78	78-80	80-82
208-211	247-252	226-231	252-257	262-267	74-76	76-78	78-80	80-82	82-84
212-215	252-257	231-236	257-262	267-272	76-78	78-80	80-82	82-84	84-86
216-219	257-262	236-241	262-267	272-277	78-80	80-82	82-84	84-86	86-88
220-223	262-267	241-246	267-272	277-282	80-82	82-84	84-86	86-88	88-90
224-227	267-272	246-251	272-277	282-287	82-84	84-86	86-88	88-90	90-92
228-231	272-277	251-256	277-282	287-292	84-86	86-88	88-90	90-92	92-94
232-235	277-282	256-261	282-287	292-297	86-88	88-90	90-92	92-94	94-96
236-239	282-287	261-266	287-292	297-302	88-90	90-92	92-94	94-96	96-98
240-243	287-292	266-271	292-297	302-307	90-92	92-94	94-96	96-98	98-100
244-247	292-297	271-276	297-302	307-312	92-94	94-96	96-98	98-100	100-102
248-251	297-302	276-281	302-307	312-317	94-96	96-98	98-100	100-102	102-104
252-255	302-307	281-286	307-312	317-322	96-98	98-100	100-102	102-104	104-106
256-259	307-312	286-291	312-317	322-327	98-100	100-102	102-104	104-106	106-108
260-263	312-317	291-296	317-322	327-332	100-102	102-104	104-106	106-108	108-110
264-267	317-322	296-301	322-327	332-337	102-104	104-106	106-108	108-110	110-112
268-271	322-327	301-306	327-332	337-342	104-106	106-108	108-110	110-112	112-114
272-275	327-332	306-311	332-337	342-347	106-108	108-110	110-112	112-114	114-116
276-279	332-337	311-316	337-342	347-352	108-110	110-112	112-114	114-116	116-118
280-283	337-342	316-321	342-347	352-357	110-112	112-114	114-116	116-118	118-120
284-287	342-347	321-326	347-352	357-362	112-114	114-116	116-118	118-120	120-122
288-291	347-352	326-331	352-357	362-367	114-116	116-118	118-120	120-122	122-124
292-295	352-357	331-336	357-362	367-372	116-118	118-120	120-122	122-124	124-126
296-299	357-362	336-341	362-367	372-377	118-120	120-122	122-124	124-126	126-128
300-303	362-367	341-346	367-372	377-382	120-122	122-124	124-126	126-128	128-130
304-307	367-372	346-351	372-377	382-387	122-124	124-126	126-128	128-130	130-132
308-311	372-377	351-356	377-382	387-392	124-126	126-128	128-130	130-132	132-134
312-315	377-382	356-361	382-387	392-397	126-128	128-130	130-132	132-134	134-136
316-319	382-387	361-366	387-392	397-402	128-130	130-132	132-134	134-136	136-138
320-323	387-392	366-371	392-397	402-407	130-132	132-134	134-136	136-138	138-140
324-327	392-397	371-376	397-402	407-412	132-134	134-136	136-138	138-140	140-142
328-331	397-402	376-381	402-407	412-417	134-136	136-138	138-140	140-142	142-144
332-335	402-407	381-386	407-412	417-422	136-138	138-140	140-142	142-144	144-146
336-339	407-412	386-391	412-417	422-427	138-140	140-142	142-144	144-146	146-148
340-343	412-417	391-396	417-422	427-432	140-142	142-144	144-146	146-148	148-150
344-347	417-422	396-401	422-427	432-437	142-144	144-146	146-148	148-150	150-152
348-351	422-427	401-406	427-432	437-442	144-146	146-148	148-150	150-152	152-154
352-355	427-432	406-411	432-437	442-447	146-148	148-150	150-152	152-154	154-156
356-359	432-437	411-416	437-442	447-452	148-150	150-152	152-154	154-156	156-158
360-363	437-442	416-421	442-447	452-457	150-152	152-154	154-156	156-158	158-160
364-367	442-447	421-426	447-452	457-462	152-154	154-156	156-158	158-160	160-162
368-371	447-452	426-431	452-457	462-467	154-156	156-158	158-160	160-162	162-164
372-375	452-457	431-436	457-462	467-472	156-158	158-160	160-162	162-164	164-166
376-379	457-462	436-441	462-467	472-477	158-160	160-162	162-164	164-166	166-168
380-383	462-467	441-446	467-472	477-482	160-162	162-164	164-166	166-168	168-170
384-387	467-472	446-451	472-477	482-487	162-164	164-166	166-168	168-170	170-172
388-391	472-477	451-456	477-482	487-492	164-166	166-168	168-170	170-172	172-174
392-395	477-482	456-461	482-487	492-497	166-168	168-170	170-172	172-174	174-176
396-399	482-487	461-466	487-492	497-502	168-170	170-172	172-174	174-176	176-178
400-403	487-492	466-471	492-497	502-507	170-172	172-174	174-176	176-178	178-180
404-407	492-497	471-476	497-502	507-512	172-174	174-176	176-178	178-180	180-182
408-411	497-502	476-481	502-507	512-517	174-176	176-178	178-180	180-182	182-184
412-415	502-507	481-486	507-512	517-522	176-178	178-180	180-182	182-184	184-186
416-419	507-512	486-491	512-517	522-527	178-180	180-182	182-184	184-186	186-188
420-423	512-517	491-496	517-522	527-532	180-182	182-184	184-186	186-188	188-190
424-427	517-522	496-501	522-527	532-537	182-184	184-186	186-188	188-190	190-192
428-431	522-527	501-506	527-532	537-542	184-186	186-188	188-190	190-192	192-194
432-435	527-532	506-511	532-537	542-547	186-188	188-190	190-192	192-194	194-196
436-439	532-537	511-516	537-542	547-552	188-190	190-192	192-194	194-196	196-198
440-443	537-542	516-521	542-547	552-557	190-192	192-194	194-196	196-198	198-200
444-447	542-547	521-526	547-552	557-562	192-194	194-196	196-198	198-200	200-202
448-451	547-552	526-531	552-557	562-567	194-196	196-198	198-200	200-202	202-204
452-455	552-557	531-536	557-562	567-572	196-198	198-200	200-202	202-204	204-206
456-459	557-562	536-541	562-567	572-577	198-200	200-202	202-204	204-206	206-208
460-463	562-567	541-546	567-572	577-582	200-202	202-204	204-206	206-208	208-210
464-467	567-572	546-551	572-577	582-587	202-204	204-206	206-208	208-210	210-212
468-471	572-577	551-556	577-582	587-592	204-206	206-208	208-210	210-212	212-214
472-475	577-582	556-561	582-587	592-597	206-208	208-210	210-212	212-214	214-216
476-479	582-587	561-566	587-592	597-602					

## 6732 sewing directions

Shaded area is right side of fabric

The metric equivalent is in parenthesis.

NOTE: Stitch 5/8" (1.5cm) seams, unless otherwise stated, matching same numbered notches.

## suggested seam finishes

a—Pink seams.

a.

b.

b—Overcast separately.

c—Use a regular zig-zag stitch along each seam edge.

c.

d.

d—For enclosed seams, trim seams and corners; clip curves.

e.

e—Sheer Fabric - Stitch seam again 1/8" (3mm) from first stitching. Trim close to stitching. Press seam to one side.

## apron

UNIT 1  
pockets, skirt front and back

a—Stitch under 1/4" (6mm) on upper edge of pocket.

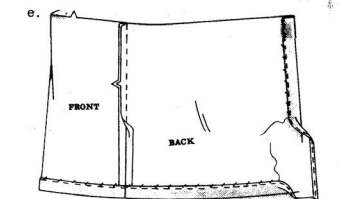
Turn upper edge to OUTSIDE along fold line, forming facing. Stitch along seam line on raw edges; trim to 1/4" (6mm).

b—Turn facing to INSIDE, turning under raw edges along stitching; press. Slip-stitch facing.

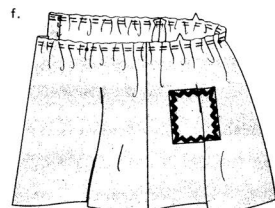
c—On OUTSIDE, pin rick-rack to pocket, having outer points even with all edges of pocket, turning and lapping one end at one corner. Stitch along center of rick-rack.

d—On OUTSIDE, pin pocket to front along pocket line, matching medium dots.

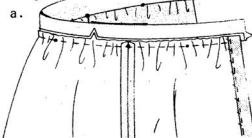
Slip-stitch side and lower edges.



e—Stitch skirt front to back at side seams. Stitch under 1/4" (6mm) on lower and back opening edges. Press up hem; slip-stitch, easing in fullness. Press back edges to INSIDE along fold line, forming facing; slip-stitch.

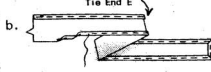


f—To gather upper edge of skirt, stitch along seam line and 1/4" (6mm) INSIDE seam line, using a long machine-stitch.

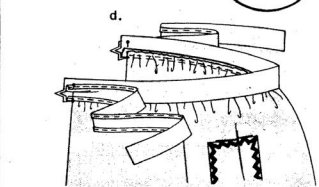
UNIT 2  
waistband, tie ends and band facing

a—With RIGHT sides together, pin skirt to waistband matching centers, small and medium dots. (Band extends 5/8" (1.5cm) beyond back opening edges of skirt.) Pull up machine-stitching to fit; baste. Stitch. Trim seam; press band out, pressing seam toward band.

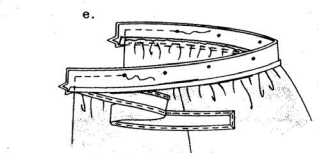
b—Narrowly hem tie ends (E), leaving end with small dots raw, as shown.



c—To make soft pleat, on OUTSIDE, fold along solid line. Bring fold to broken line. Baste across raw end.

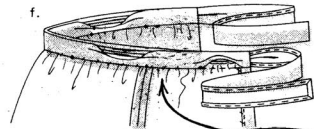


d—With RIGHT sides together, baste tie ends to waistband, matching small dots, as shown.

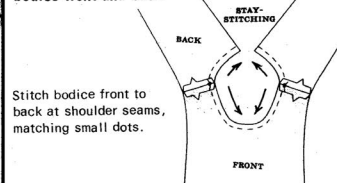


e—Press under 5/8" (1.5cm) on long notched edge of band facing; trim to 1/4" (6mm). With RIGHT sides together, pin facing to band, matching centers, small and medium dots, having raw edges even. Stitch across ends and upper edge as far as medium dots; as shown, being careful not to catch in free edges of tie ends. Trim seam and corners.

Printed in Great Britain Printed in New Zealand  
© Copyright 1974 by Simplicity Pattern Co., Inc.  
Printed in U. S. A.



f—Turn facing to INSIDE; press, pressing under 5/8" (1.5cm) on remaining upper raw edges of band and facing separately; trim to 1/4" (6mm). Slip-stitch pressed edge of band facing over skirt seam, matching centers, small and medium dots.

UNIT 3  
bodice front and back

Stitch bodice front to back at shoulder seams, matching small dots.

a—Press under 3/8" (1cm) on long edges and end without small dots. Fold tie end (H) in half lengthwise. Stitch close to all edges.

b—On OUTSIDE, baste tie ends to bodice back, matching small dots, having raw edges even and seam edge down.

UNIT 4  
bodice facing

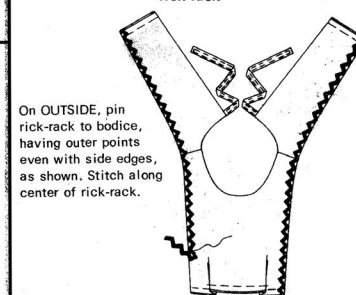
a—Stitch shoulder seams of bodice facing sections, matching small dots. With RIGHT sides together, pin facing to bodice, matching centers, seams, small and medium dots. Stitch center back and neck edges, being careful not to catch in free edges of tie ends. Stitch side edges, leaving an opening between small and medium dots, as shown. Trim seams and corners; clip curves.

b—Turn facing to INSIDE, press, pressing under 5/8" (1.5cm) on remaining raw side edges of bodice and facing separately; trim to 1/4" (6mm). Slip-stitch pressed edges of bodice and facing together. Baste raw edges together.

c—To make soft pleats at lower edge of bodice front, on OUTSIDE, fold along solid line.

Bring fold to broken line. Baste across lower edge.

## rick-rack



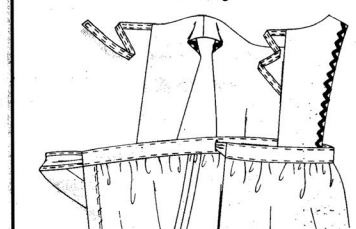
On OUTSIDE, pin rick-rack to bodice, having outer points even with side edges, as shown. Stitch along center of rick-rack.

## stitching bodice to waistband

a—Insert bodice front and back between pressed edges of waistband and band facing, matching seam lines, centers, small and medium dots, as shown. Baste pressed edges of band and facing together catching in bodice.

b—On OUTSIDE, stitch close to all edges of band.

## finishing



Make worked or machine buttonhole opening at buttonhole marking in waistband, as shown. Slip RIGHT tie end thru buttonhole opening in waistline. Lap LEFT skirt back over RIGHT, matching centers. Fasten tie ends into a bow at center front, as shown on front of envelope.

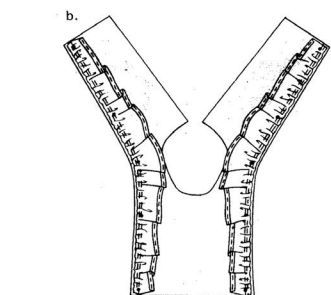
## apron

Prepare apron same as for view 1, see unit 1 thru tie ends in unit 3, omitting reference to rick-rack.

## ruffles



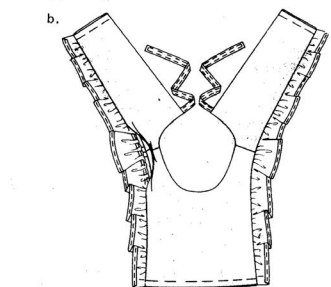
a—Narrowly hem straight edge of ruffle. To gather remaining edge between outer small dots, stitch along seam line and 1/4" (6mm) INSIDE seam line, using a long machine-stitch.



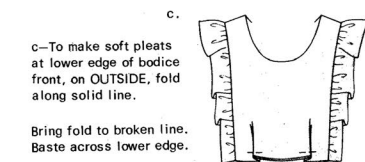
b—With RIGHT sides together, pin ruffles to bodice, placing center small dot at shoulder seam, matching remaining small and medium dots, as shown. Pull up machine-stitching to fit; baste. Stitch. (Do not trim seams.)

UNIT 4  
bodice facing

Prepare facing same as for view 1, see unit 4, step a. When stitching neck edge, be careful not to catch in free edges of ruffles.



b—Turn facing to INSIDE; press, pressing under 5/8" (1.5cm) on remaining raw side edges of facing; trim to 1/4" (6mm). Slip-stitch pressed edges of facings over seams. Baste raw edges together.



c—To make soft pleats at lower edge of bodice front, on OUTSIDE, fold along solid line.

Bring fold to broken line. Baste across lower edge.

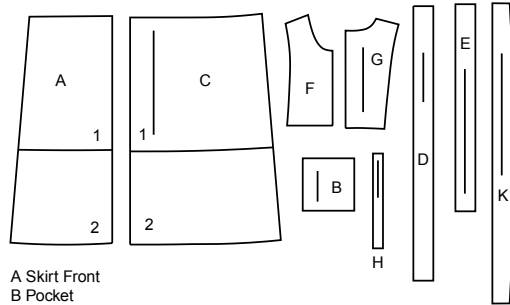
For stitching bodice to waistband and finishing, see view 1.

# Simplicity®

Thank you for purchasing this Simplicity pattern.  
We made every effort to provide you with a high quality product.

## SUPPLEMENTAL CUTTING LAYOUTS

9 PIECES



A Skirt Front  
B Pocket  
C Skirt Back  
D Waistband  
E Tie End  
F Bodice Front  
G Bodice Back  
H Tie End  
K Ruffle - View 2



www.simplicity.com



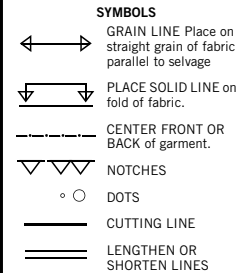
info@simplicity.com



1-888-588-2700

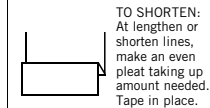
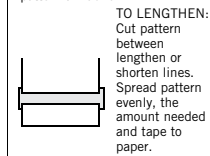
## General Directions

### The Pattern



SEAM ALLOWANCE: 5/8" (1.5cm) unless otherwise stated is included but not printed on MULTI-SIZE PATTERNS. Mark your size with colored felt tip pen. See chart on tissue for how to use MULTI-SIZE PATTERNS.

**ADJUST IF NEEDED**  
Make adjustments before placing pattern on fabric.



When lengthen or shorten lines are not given, make adjustments at lower edge of pattern.

### Cutting/Marking

**BEFORE CUTTING:**  
PRESS pattern pieces with a warm dry iron. PRE-SHRINK fabric by pre-washing washables or steam-pressing non-washables.

CIRCLE your cutting layout.

PIN pattern to fabric as shown in Cutting Layouts.

• FOR DOUBLE THICKNESS: Fold fabric with RIGHT sides together.

• FOR SINGLE THICKNESS: Place fabric RIGHT side up.

• FOR PILE, SHADED OR ONE WAY DESIGN FABRICS: Use "with nap" layouts

**AFTER CUTTING:**  
Transfer markings to WRONG side of fabric before removing pattern. Use pin and chalk method or dressmaker's tracing paper and wheel.

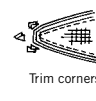
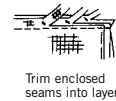
#### To Quick Mark:

- Snip edge of fabric to mark notches, ends of fold lines and center lines.
- Pin mark dots.



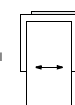
### Sewing

- SEW garment following **Sewing Directions**.
- PIN or machine-baste seams matching notches.
- STITCH 5/8" (1.5 cm) seams unless otherwise stated.
- PRESS seams open unless otherwise indicated clipping when necessary so seams will lie flat.
- TRIM seams to reduce bulk, as shown below.

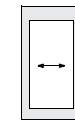


### SPECIAL CUTTING NOTES

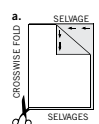
★ If layout shows a piece extending past fold, cut out all pieces except piece that extends.



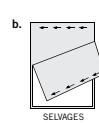
Open out fabric to single thickness. Cut extending piece on RIGHT side of fabric in position shown.



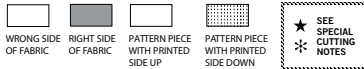
✱ Mark small arrows along both selvages indicating direction of nap or design. Fold fabric crosswise with RIGHT sides together, and cut along fold (a).



Turn one fabric layer around so arrows on both layers go in the same direction. Place RIGHT sides together (b).



## Cutting Layouts

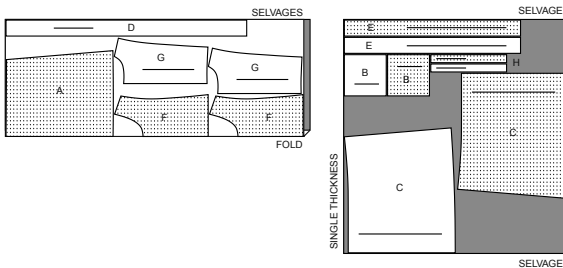


POSITION OF PATTERN PIECES MAY VARY SLIGHTLY ACCORDING TO YOUR PATTERN SIZE

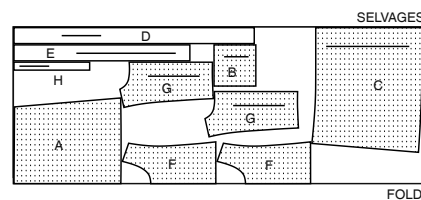
### VIEW 1 APRON

USE PIECES A B C D E F G H

45" (115CM)  
WITH NAP  
ALL SIZES



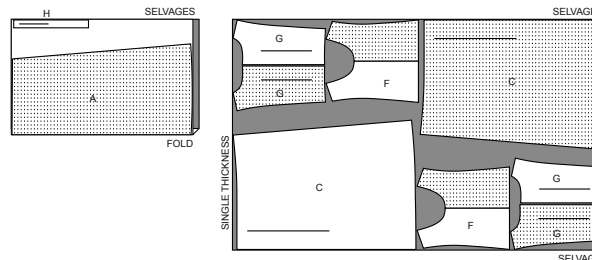
60" (150CM)  
WITH NAP  
ALL SIZES



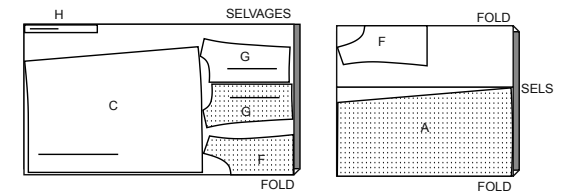
### VIEW 2 APRON

USE PIECES A C F G H

45" (115CM)  
WITH NAP  
ALL SIZES



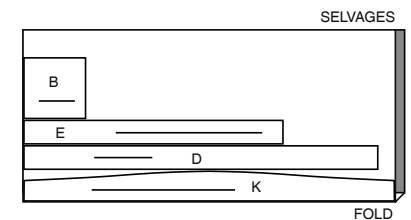
60" (150CM)  
WITH NAP  
ALL SIZES



### CONTRAST POCKETS, WAISTBAND, TIE ENDS, RUFFLES

USE PIECES B D E K

45" TO 60" (115CM TO 150CM)  
WITH NAP  
ALL SIZES







# Congrats!

You've completed your sewing adventure

---

## SHARE YOUR LOOK



Post your pattern and tag us  
[@simplicity\\_creative\\_group](#) and [#simplicitypatterns](#)  
for a chance to be featured on our social media.

Look for more PDF patterns at [simplicity.com](https://www.simplicity.com)

Have a question or need help with your sewing project call us at  
1-888-588-2700



Simplicity ©2024 a division of IG Design Group Americas Inc. • Atlanta, GA 30342 USA [www.thedesigngroup.com](https://www.thedesigngroup.com) • All Rights Reserved. [www.simplicity.com](https://www.simplicity.com) • Made in the U.S.A. Fabriqué aux États-Unis.

To be used for individual private home use only and not for commercial or manufacturing purposes. • A usage privé seulement et non à des fins commerciales ou de production en série. • Para uso privado solamente, no se puede utilizar con propósitos de comercialización o de producción en serie.