

S3048

Simplicity®

1980s Vintage



Tops not included

easy-to-sew



Easy

MISSES' JUMPERS IN TWO LENGTHS

Suggested Fabrics: Batik, Broadcloth, Calico, Chambray, Chintz, Cotton Types, Lightweight Linen Types, Oxford Cloth. **Views 2,3** also in Lightweight Wool Types, Pinwale Corduroy.

Interfacing: Lightweight Fusible.

Notions: Seam tape or stretch lace. **View 1,2:** Four ¾" (1.5cm) buttons. **View 3,4:** Ten ½" (1.3cm) buttons.

Sizes	6	8	10	12	14	16	18	20	22
European	32	34	36	38	40	42	44	46	48

BODY MEASUREMENTS: Select pattern size based on body measurements

Bust	30½	31½	32½	34	36	38	40	42	44	Ins.
Waist	23	24	25	26½	28	30	32	34	37	"
Hip-9" below waist	32½	33½	34½	36	38	40	42	44	46	"
Back-neck to waist	15½	15¾	16	16¼	16½	16¾	17	17¼	17½	"

View 1 Jumper Bodice and Overskirt

60**	2½	2½	2½	2½	2½	2½	2½	3	3	Yds.
------	----	----	----	----	----	----	----	---	---	------

Contrast (Skirt Front and Back, Binding, Pockets) - 60** - 2 yds.

View 2 Jumper

60**	3%	3%	3%	3%	3%	3%	3%	3%	3%	Yds.
------	----	----	----	----	----	----	----	----	----	------

View 3 Jumper

60**	3%	3%	3%	3%	3%	3%	3%	3%	3%	Yds.
------	----	----	----	----	----	----	----	----	----	------

View 3 or 4 Interfacing - 20" - ¾ yd.

View 4 Jumper

60**	3%	3%	3%	3%	3%	3%	3%	3%	3%	Yds.
------	----	----	----	----	----	----	----	----	----	------

FINISHED GARMENT MEASUREMENTS (Includes Design and Wearing Ease)

Width, lower edge

View 1,2,3,4 Jumper	82½	83½	84½	86	88	90	92	94	96	Ins.
---------------------	-----	-----	-----	----	----	----	----	----	----	------

Finished back length from base of neck

View 1,4 Jumper	47½	47¾	48	48½	48¾	48¾	49	49½	49½	Ins.
View 2,3 Jumper	45½	45¾	46	46¼	46½	46¾	47	47¼	47½	"

*with nap **without nap

Facile

ROBES-CHASUBLE EN DEUX LONGUEURS POUR JEUNES FEMMES

Tissus Conseillés: Batik, Broadcloth, Calicot, Chambray, Chintz, Types coton, Types toile de lin léger, Tissu oxford. **Modèles 2,3** aussi en Types Laine léger, Velours Milleraies. **Entoilage:** Thermocollant léger.

Mercerie: Ruban pour couture ou dentelle extensible. **Aussi pour Modèle 1,2:** 4 boutons de 1.5cm. **Aussi pour Modèle 3,4:** 10 boutons de 1.3cm.

Tailles	6	8	10	12	14	16	18	20	22
Françaises	34	36	38	40	42	44	46	48	50
Européen	32	34	36	38	40	42	44	46	48

MESURES DU CORPS: Choisissez la taille du patron basée sur les mesures du corps

Poitrine	78	80	83	87	92	97	102	107	112	cm
Taille	58	61	64	67	71	76	81	87	94	"

Hanches (23cm au-dessous de la taille)

	83	85	88	92	97	102	107	112	117	cm
Dos du cou à la taille	39.5	40	40.5	41.5	42	42.5	43	44	44	"

Modèle 1 Du corsage et dessus de jupe de la robe-chasuble

150cm*	2.6	2.6	2.6	2.6	2.6	2.6	2.6	2.6	2.7	m
--------	-----	-----	-----	-----	-----	-----	-----	-----	-----	---

Contraste (Jupe devant et dos, Bordure, Poches) - 150cm* - 1.8m

Modèle 2 Robe-chasuble

150cm*	3.1	3.1	3.1	3.1	3.2	3.2	3.2	3.2	3.2	m
--------	-----	-----	-----	-----	-----	-----	-----	-----	-----	---

Modèle 3 Robe-chasuble

150cm*	2.9	2.9	2.9	2.9	2.9	2.9	3.0	3.0	3.0	m
--------	-----	-----	-----	-----	-----	-----	-----	-----	-----	---

Modèle 3 ou 4 Entoilage - 51cm - 0.6m

Modèle 4 Robe-chasuble

150cm*	2.9	2.9	2.9	2.9	2.9	2.9	3.0	3.0	3.0	m
--------	-----	-----	-----	-----	-----	-----	-----	-----	-----	---

MESURES DES VÊTEMENTS FINI (Motif et aisance de port compris)

Largeur à l'ourlet

Modèle 1,2,3,4 Robe-chasuble	210	212	215	218	224	229	234	239	244	cm
------------------------------	-----	-----	-----	-----	-----	-----	-----	-----	-----	----

Longueur finie - dos, votre nuque à l'ourlet

Modèle 1,4 Robe-chasuble	121	121	122	123	123	124	124	125	126	cm
Modèle 2,3 Robe-chasuble	116	116	117	117	118	119	119	120	121	"

*avec sens **sans sens



1



2



3

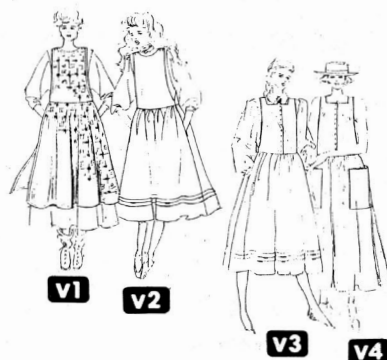


4

Simplicity 6479

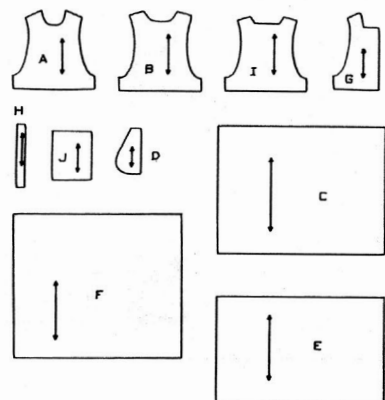
page 1

If you have any questions, just call us between 8-4AM and 4-4PM EST
In New York State, call collect. (212) 576-0667
Other states in Continental U. S., phone toll free: (800) 223-1664



Select Pattern Pieces

10 pieces given



A-BODICE FRONT V.1 & 2
B-BODICE BACK V.1 & 2
C-SKIRT FRONT AND
BACK V.1 & 4
D-POCKET V.1, 2 & 3
E-OVERSKIRT FRONT
AND BACK V.1

F-SKIRT FRONT AND
BACK V.2 & 3
G-BODICE FRONT V.3 & 4
H-FRONT INTERFACING V.3 & 4
I-BODICE BACK V.3 & 4
J-POCKET V.4

How To Use Your Pattern

The metric equivalent is in parenthesis.

PATTERN SYMBOLS

===== LENGTHEN OR
SHORTEN LINES

↔ STRAIGHT GRAIN:
Place on fabric an
even distance from
selvage.

▽ FOLD GRAIN:
Place on fold of
fabric.

✂ CUTTING LINE

--- SEAM LINE or
STITCHING LINE

SEAM ALLOWANCE:
The area between seam
line and cutting line,
usually 1/2" (1.3 cm).
On multi-size patterns, the seam allowance
is included but not printed.

← DIRECTIONAL
STITCHING ARROW
----- CENTER LINE

⬢ NOTCHES Mark these
for matching
pattern
pieces

○ DOTS

— BUTTONHOLE Mark these
for placement

● BUTTON

ADJUST IF NECESSARY

This pattern is made to fit body
measurements with "ease" allowed for
comfort, fit, and style. Check your
back-neck to waist and finished lengths
against the measurements listed for your
size on the envelope back. Also check your
sleeve length. Make necessary adjustments
before placing pattern on fabric.

TO LENGTHEN:
Cut pattern between
lengthen or
shorten lines.
Spread pattern
evenly, amount
needed and tape to
paper.

TO SHORTEN:
At lengthen or
shorten lines, make
an even pleat, taking
up amount needed.
Tape in place.

When lengthen or shorten lines are not
given, make adjustments at lower edge of
pattern.

FABRIC AND CUTTING LAYOUTS

Press fabric. Always check care directions
with fabric. If necessary, shrink fabric before
cutting. It is important not to let fabric hang
over edge of the cutting surface.

CIRCLE LAYOUT for your view, size and
fabric width.

For DOUBLE THICKNESS, fold fabric with
RIGHT side INSIDE. Place pattern on
WRONG side of fabric.

For SINGLE THICKNESS, place RIGHT side
of fabric facing you. Place pattern on RIGHT
side of fabric.

Use WITH NAP layouts for fabrics with nap,
shading or one-way design.

Because KNIT FABRICS often shade, "with
nap" layouts are given.

BEFORE CUTTING, pin all pattern pieces to
fabric as in layout. For smaller sizes, pieces
may interlock more closely. When a pattern
piece is used more than once, cut it out as
many times as shown.
CUT through pattern and fabric on cutting
lines using very sharp shears.

SPECIAL CUTTING NOTES

★ Layout shows a piece extending past
fold, cut out all pieces except piece that
extends; then open out fabric and on
single thickness, cut extending piece on
right side of fabric in position shown.

* For nap or one
way design fabrics,
mark small arrows
along both selvages
indicating direction
of nap or design.
Fold fabric
crosswise, with
RIGHT sides
together, and cut
through fold, as
shown in a.

Turn one fabric layer
around so RIGHT
sides are together
and arrows on both
layers go in the
same direction, as
shown in b.

MARK YOUR FABRIC

Before removing pattern, transfer
markings to fabric using the easy clip
method

Make a tiny clip*
at the edge of
fabric and pattern
to mark notches,
most dots, ends
of fold lines,
center front and
back.

Use pins to mark
buttonholes, other
dots and lines not
at edges.

If you prefer, use pin and chalk method or
dressmaker's tracing paper and wheel.
SEE SIMPLICITY SEWING BOOK
FOR MORE DETAILS.

Cutting Layouts

KEY: ■ black is fabric.

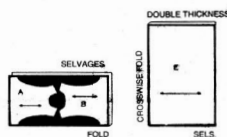
□ white is pattern
printed side up.▤ grey is pattern
printed side down.— solid outline is fabric cut
without a pattern piece.

★ * See Special Cutting Notes above.

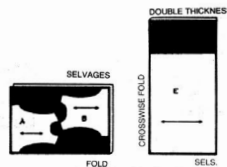
V1 JUMPER BODICE AND OVERSKIRT

USE PIECES A B E

44" 45" (115cm) fabric
without nap
all sizes



58" 60" (150cm) fabric
without nap
all sizes

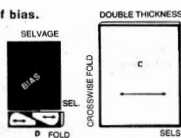


V1 CONTRASTING SKIRT AND BINDING

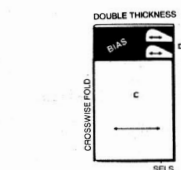
USE PIECES C D

NOTE: See sewing directions for cutting of bias.

44" 45" (115cm) fabric
without nap
all sizes



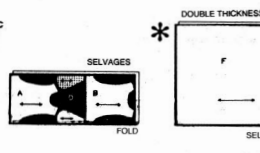
58" 60" (150cm) fabric
without nap
all sizes



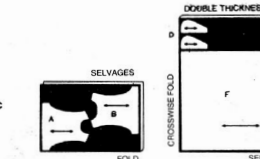
V2 JUMPER

USE PIECES A B D F

44" 45" (115cm) fabric
with or without nap
all sizes



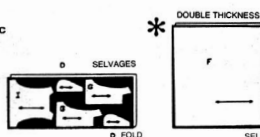
58" 60" (150cm) fabric
without nap
all sizes



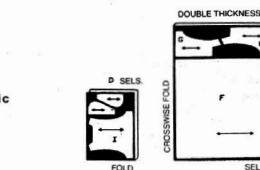
V3 JUMPER

USE PIECES D F G I

44" 45" (115cm) fabric
with or without nap
all sizes



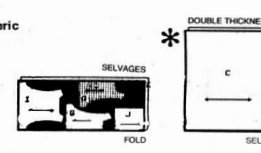
58" 60" (150cm) fabric
without nap
all sizes



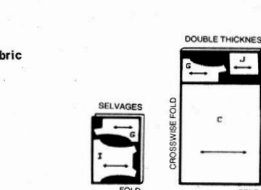
V4 JUMPER

USE PIECES C G I J

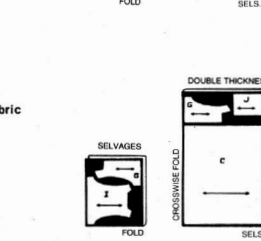
44" 45" (115cm) fabric
with or without nap
all sizes



58" 60" (150cm) fabric
without nap
sizes 6, 8, 10, 12



58" 60" (150cm) fabric
without nap
sizes 14, 16



V3-4 INTERFACING

USE PIECE H

22" to 36" (55cm to 90cm) fabric
all sizes



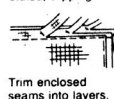
page 2

6479 General Directions

FABRIC

RIGHT SIDE **WRONG SIDE** **INTERFACING** **LEANS**

Sew garment following Sewing Directions. PIN or machine-baste seams matching same numbered notches. STITCH $\frac{1}{4}$ " (1.5 cm) seams (in direction of arrows) unless otherwise stated. PRESS seams open unless otherwise stated, clipping when necessary so seams will lie flat.



Trim enclosed seams into layers.



Trim corners.



Clip inner curves.



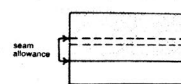
Notch outer curves.

Sewing procedures **ITALICIZED** in Sewing Directions are defined below:

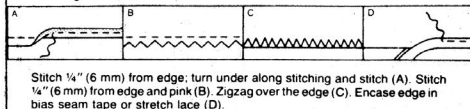
DARTS—With **RIGHT** sides together, bring stitching lines together, matching small dots. Pin. Stitch along stitching line from wide end to point.



EASE-STITCH or **GATHER**—Loosen needle tension slightly, so bobbin thread pulls easily. Then, stitch from **RIGHT** side $\frac{1}{4}$ " (1.5 cm) from cut edge with a long stitch. Stitch again $\frac{1}{4}$ " (6 mm) away in the seam allowance.



EDGE FINISH—Finish raw edges of seams, hems and facings using one of the following methods:



Stitch $\frac{1}{4}$ " (6 mm) from edge; turn under along stitching and stitch (A). Stitch $\frac{1}{4}$ " (6 mm) from edge and pink (B). Zigzag over the edge (C). Encase edge in bias seam tape or stretch lace (D).

INTERFACING—Pin interfacing to **WRONG** side of fabric. Cut across corners that will be enclosed with seams. Machine-baste $\frac{1}{2}$ " (1.3 cm) from cut edge. Trim interfacing close to machine-basting.

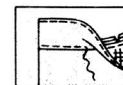
For **FUSIBLE** interfacing, follow manufacturer's directions.

PLEATS—On **RIGHT** side of fabric, fold along solid line. Bring fold to broken line; pin or baste.

STAY-STITCH—Stitch $\frac{1}{2}$ " (1.3 cm) from cut edge, within the seam allowance in direction of arrows. done to prevent stretching of bias or curved edges. shown only in the first illustration.



UNDERSTITCH—Press facing away from garment; press seam toward facing. Facing side up, understitch close to seam through facing and seam allowances.



Sewing Directions

Read General Directions before you begin.

V1-2 JUMPER

NOTE: You have cut two bodice fronts and two bodice backs. One bodice front and one bodice back will be referred to as the facing.

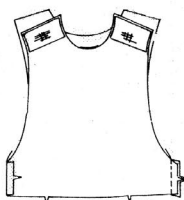
bodice front and back

Reinforce underside of buttonhole markings on bodice front with fusible interfacing remnant.

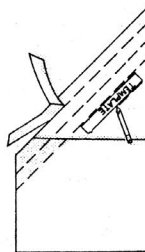


With **RIGHT** sides together and raw edges even, stitch bodice front to bodice back at side seams.

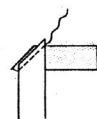
Press seams open.



To prepare a length of fabric for cutting bias strips, first make a straight crosswise edge by pulling a crosswise thread and cutting along the thread. Fold corner down so the crosswise edge is perfectly aligned with the selvage. Press the fold with your fingernail. Cut a template of cardboard for 2-1/2" (6.3cm) wide. Then using the template, measure and mark until you have enough bias for front and back neck and both armhole edges. Cut along the marked lines.

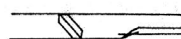


Pin strips together along the lengthwise grain.

Stitch in $\frac{1}{4}$ " (6mm) seams.

Press seams open; trim off extending points.

Press under $\frac{5}{8}$ " (1.5cm) on one long edge of binding.



facing and binding view 1

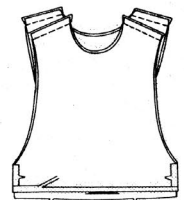
Stitch side seams of bodice facing same as for bodice.

Press under $\frac{5}{8}$ " (1.5cm) on lower edge of facing; trim to $\frac{1}{4}$ " (6mm).

With **RIGHT** sides together and raw edges even, pin facing to bodice, matching centers and side seams.

Stitch shoulder edges.

Trim seams.



Turn facing to **INSIDE**; press.

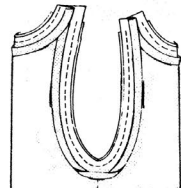
Machine-baste neck and armhole edges together $\frac{3}{4}$ " (2cm) from raw edges.

Trim away $\frac{5}{8}$ " (1.5cm) from neck and armhole edges.



On **OUTSIDE**, with **RIGHT** sides together and raw edges even, pin binding to neck and armhole edges having ends extend $\frac{5}{8}$ " (1.5cm) beyond shoulder edges of bodice.

Stitch in $\frac{5}{8}$ " (1.5cm) seams, stretching bias along inner curves.

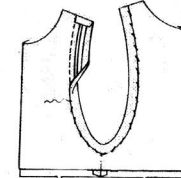


Press binding out, pressing seam toward binding.

Turn in ends of binding.

Turn binding over raw edge.

On **INSIDE**, slip-stitch pressed edge of binding over seams.



facings view 2

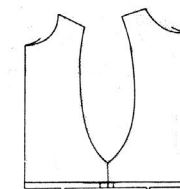
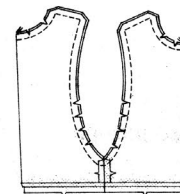
Stitch side seams of bodice facing same as for bodice.

Press under $\frac{5}{8}$ " (1.5cm) on lower edges of facing; trim to $\frac{1}{4}$ " (6mm).

With **RIGHT** sides together and raw edges even, pin facing to bodice matching centers and side seams.

Stitch neck, shoulder and armhole edges.

Trim seam and corners; clip curves.



Turn facing to **INSIDE**; press.

skirt, pockets and side seams

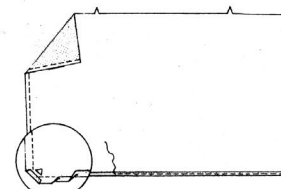
NOTE: Apply pockets to side edges of front and back as follows:

To mark seam line, machine-stitch $\frac{5}{8}$ " (1.5cm) from side edges above small dots, as shown.



With **RIGHT** sides together, pin pocket to garment, matching small and large dots, having raw edges even. Stitch in a $\frac{3}{8}$ " (1cm) seam.

overskirt front and back view 1



To form narrow hem on side and lower edges of overskirt, machine-stitch $\frac{5}{8}$ " (1.5cm) from side and lower edges, crossing stitching at corners.

Turn corners to **INSIDE** diagonally where stitchings cross. Press. Trim to within $\frac{1}{4}$ " (6mm) of pressed edge, as shown.

Turn raw edges to **INSIDE** so they just meet stitching, as shown; press.

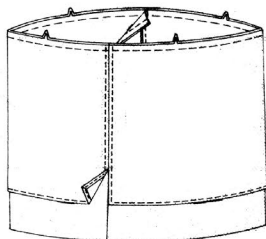
Turn pressed edges to **INSIDE** again, along stitching; press.

On **OUTSIDE**, top-stitch $\frac{1}{4}$ " (6mm) from finished edges, catching in hem and squaring stitching.

©Copyright 1984 — Simplicity Pattern Co., Inc.
Printed in U.S.A.

page 3

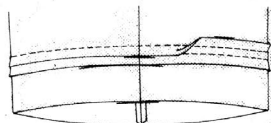
6479



On OUTSIDE, pin WRONG side of overskirt front and back to RIGHT side of skirt front and back having upper edges even, matching centers, placing finished edges at side seams.

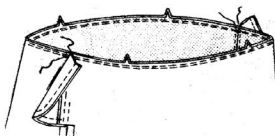
Baste upper edges together, keeping pocket free, as shown.

tucks view 2



To make tucks at lower edge of skirt front and back, on OUTSIDE, bring broken lines together. Stitch along broken lines. Press tucks down.

stitching skirt to bodice



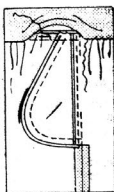
GATHER upper edge of skirt between small dots, keeping pocket free.

With RIGHT sides together and raw edges even, pin skirt to bodice matching centers and side seams. Pull up gathering stitches to fit; distributing fullness evenly; fasten threads. Baste, keeping pocket free as shown.

Baste upper edge of pocket to front having raw edges even. Stitch seam.

Press seam toward bodice.

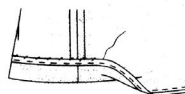
On INSIDE, slip-stitch pressed edge of facing over seam.



hem

Mark length. Press up hem along marking. Mark depth of hem; trim evenly.

Finish hem with seam tape or stretch lace; slip-stitch, easing in fullness.



finishing

Make buttonholes in bodice front.

Lap front over back.

Sew buttons at small dots.



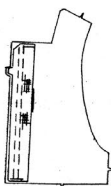
V3-4 JUMPER

NOTE: You have cut four bodice fronts and two bodice backs. Two bodice fronts and one bodice back will be referred to as the facing.

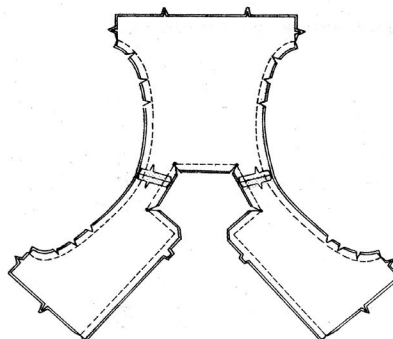
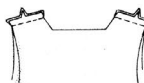
bodice front and back

Apply **INTERFACING** to bodice front.

Baste along center front line.



With RIGHT sides together and raw edges even, stitch bodice front to bodice back at shoulder seams, from neck edge to armhole edge.



Stitch shoulder seams of bodice facing same as for bodice.

With RIGHT sides together and raw edges even, pin facing to bodice matching centers, seams and small dots.

Stitch front, neck and armhole edges.

To reinforce inner corners at small dots, stitch over first stitching.

Trim seam and corners; clip curves and to small dot at inner corners.

Turn facing to INSIDE by pulling each front through shoulder. Press.

Open out facing at side edges. With RIGHT sides together, pin front to back at entire side seams. Stitch from lower edge to edge of facing.

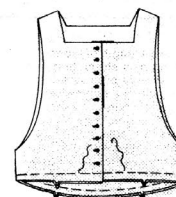
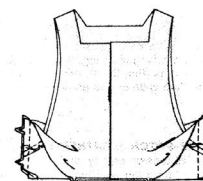
Press seams open.

Turn facing back in place.

Baste lower edges together.

If pattern has been altered, respace buttonhole markings. Make buttonholes in RIGHT front. Lap RIGHT front over LEFT matching centers. Baste across lower edge.

Sew buttons under buttonholes.



skirt, pockets and side seams view 3

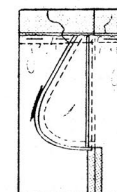
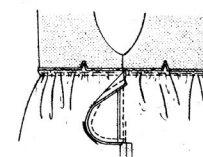
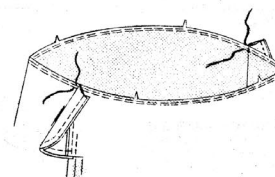
Make same as views 1 and 2.

tucks view 3

Make same as view 2.

stitching skirt to bodice view 3

GATHER upper edge of skirt between small dots, keeping pockets free.



With RIGHT sides together and raw edges even, pin skirt to bodice matching centers and side seams. Pull up gathering stitches to fit; distributing fullness evenly; fasten threads. Baste, keeping pocket free as shown. Baste upper edge of pocket to front having raw edges even. Stitch seam.

Press seam toward bodice.

skirt and pockets view 4

EDGE-FINISH upper edge of pocket.

Turn upper edge to OUTSIDE along fold line, forming facing.

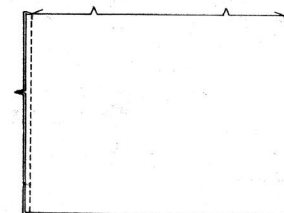
Stitch 5/8" (1.5cm) from unnotched side and lower edges; trim to 1/4" (6mm).

Turn facing to INSIDE, turning under raw edges along stitching; press. Slip-stitch facing.

On OUTSIDE, pin pocket to skirt front along pocket line, matching notches, having raw edges even.

Baste raw edges together.

Stitch close to finished side and lower edges.



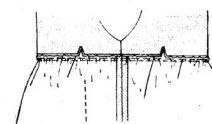
With RIGHT sides together and raw edges even, pin front to back at side seams. Stitch from lower edge to upper edge.

stitching skirt to bodice view 4

GATHER upper edge of skirt.

With RIGHT sides together and raw edges even, pin skirt to bodice matching centers and side seams. Pull up gathering stitches to fit; baste. Stitch seam.

Press seam up.



hem

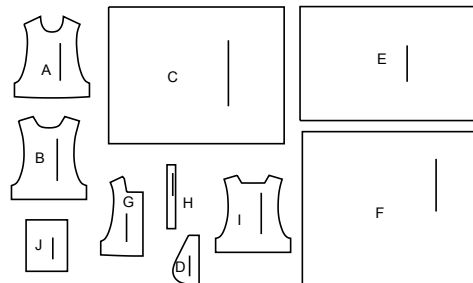
Make same as views 1 and 2.

Simplicity®

Thank you for purchasing this Simplicity pattern.
We made every effort to provide you with a high quality product.

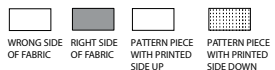
10 PIECES

SUPPLEMENTAL CUTTING LAYOUTS



A Bodice Front-1,2
B Bodice Back-1,2
C Skirt Front and Back-1,4
D Pocket-1,2,3
E Overskirt Front and Back-1
F Skirt Front and Back-2,3
G Bodice Front-3,4
H Front Interfacing-3,4
I Bodice Back-3,4
J Pocket-4

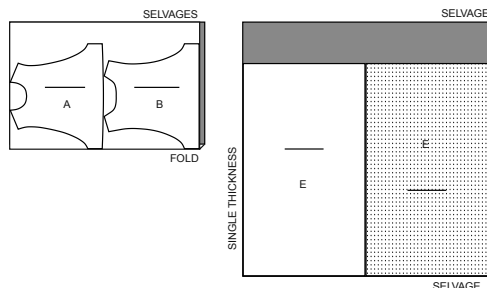
Cutting Layouts



POSITION OF PATTERN PIECES MAY VARY
SLIGHTLY ACCORDING TO YOUR PATTERN SIZE

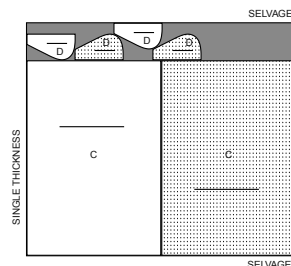
JUMPER #1 USE PIECES A B E

60" (150CM)
WITH NAP
ALL SIZES



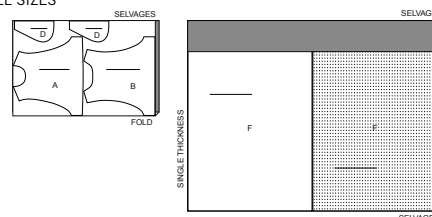
CONTRAST SKIRT, BINDING, POCKETS USE PIECES C D

60" (150CM)
WITH NAP
ALL SIZES



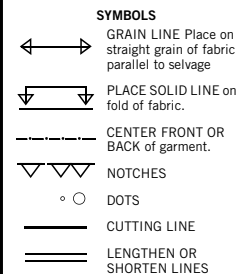
JUMPER #2 USE PIECES A B D F

60" (150CM)
WITH NAP
ALL SIZES



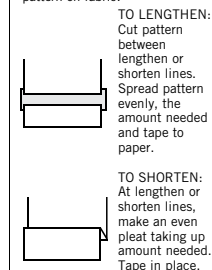
General Directions

The Pattern



SEAM ALLOWANCE: 5/8" (1.5cm) unless otherwise stated is included but not printed on MULTI-SIZE PATTERNS. Mark your size with colored felt tip pen. See chart on tissue for how to use MULTI-SIZE PATTERNS.

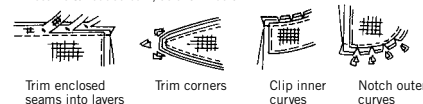
ADJUST IF NEEDED



When lengthen or shorten lines are not given, make adjustments at lower edge of pattern.

Sewing

- SEW garment following **Sewing Directions**.
- PIN or machine-baste seams matching notches.
- STITCH 5/8" (1.5 cm) seams unless otherwise stated.
- PRESS seams open unless otherwise indicated clipping when necessary so seams will lie flat.
- TRIM seams to reduce bulk, as shown below.



Cutting/Marking

BEFORE CUTTING:

PRESS pattern pieces with a warm dry iron. PRE-SHRINK fabric by pre-washing washables or steam-pressing non-washables.

CIRCLE your cutting layout.

PIN pattern to fabric as shown in Cutting Layouts.

• FOR DOUBLE THICKNESS: Fold fabric with RIGHT sides together.

• FOR SINGLE THICKNESS: Place fabric RIGHT side up.

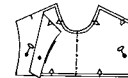
• FOR PILE, SHADED OR ONE WAY DESIGN FABRICS: Use "with nap" layouts

AFTER CUTTING:

Transfer markings to WRONG side of fabric before removing pattern. Use pin and chalk method or dressmaker's tracing paper and wheel.

To Quick Mark:

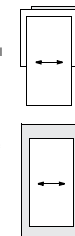
- Snip edge of fabric to mark notches, ends of fold lines and center lines.
- Pin mark dots.



SPECIAL CUTTING NOTES

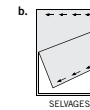
★ If layout shows a piece extending past fold, cut out all pieces except piece that extends.

Open out fabric to single thickness. Cut extending piece on RIGHT side of fabric in position shown.



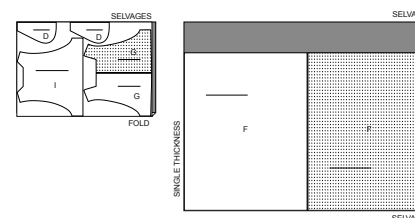
✱ Mark small arrows along both selvages indicating direction of nap or design. Fold fabric crosswise with RIGHT sides together, and cut along fold (a).

Turn one fabric layer around so arrows on both layers go in the same direction. Place RIGHT sides together (b).



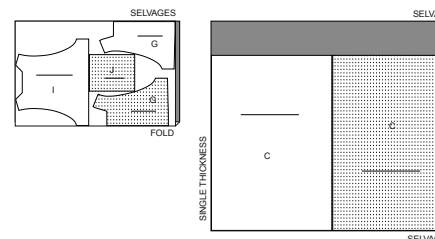
JUMPER #3 USE PIECES D F G I

60" (150CM)
WITH NAP
ALL SIZES



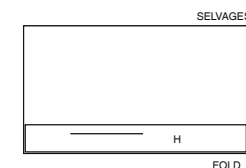
JUMPER #4 USE PIECES C G I J

60" (150CM)
WITH NAP
ALL SIZES



INTERFACING #3,4 USE PIECES H

20" (51CM)
ALL SIZES





Congrats!

You've completed your sewing adventure

SHARE YOUR LOOK



Post your pattern and tag us
[@simplicity_creative_group](#) and [#simplicitypatterns](#)
for a chance to be featured on our social media.

Look for more PDF patterns at [simplicity.com](https://www.simplicity.com)

Have a question or need help with your sewing project call us at
1-888-588-2700



Simplicity ©2024 a division of IG Design Group Americas Inc. • Atlanta, GA 30342 USA www.thedesigngroup.com • All Rights Reserved. www.simplicity.com • Made in the U.S.A. Fabriqué aux États-Unis.

To be used for individual private home use only and not for commercial or manufacturing purposes. • A usage privé seulement et non à des fins commerciales ou de production en série. • Para uso privado solamente, no se puede utilizar con propósitos de comercialización o de producción en serie.