

S3046

1970s Vintage

Simplicity

Jiffy

2 main  
pattern pieces  
Easy Cut  
Easy Sew

Very Easy

## MISSIES' KNIT DRESS IN TWO LENGTHS WORN FORWARD OR BACKWARD AND SASH

**Suggested Fabrics:** Stretchable Jersey Knits of Acetate, Cotton, Nylon, Polyester or Rayon such as: Cire Jersey, Matte Jersey, Tricot. Stretchable double knits of Polyester or Wool. See Pick-A-Knit® Rule.

**Notions:** Stretch lace (opt.), belt (opt.)

Sizes	8	10	12	14	16	18	20	22	24	26
European	34	36	38	40	42	44	46	48	50	52

## BODY MEASUREMENTS: Select pattern size based on body measurements

Bust	31½	32½	34	36	38	40	42	44	46	48	Ins.
Waist	24	25	26½	28	30	32	34	37	39	41½	"
Hip-9" below waist	33½	34½	36	38	40	42	44	46	48	50	"
Back-neck to waist	15½	16	16½	16½	16½	17	17½	17½	17½	17½	"

## Short Dress

60"	¾	¾	¾	¾	¾	¾	¾	¾	¾	¾	Yds.
-----	---	---	---	---	---	---	---	---	---	---	------

## Long Dress

60"	¾	¾	¾	¾	¾	¾	¾	¾	¾	¾	Yds.
-----	---	---	---	---	---	---	---	---	---	---	------

## FINISHED GARMENT MEASUREMENTS (Includes Design and Wearing Ease)

Bust	37	38	39½	41½	43½	45½	47½	49½	51½	53½	Ins.
Waist	37	38	39½	41½	43½	45½	47½	49½	51½	53½	"
Hip	40	41	42½	44½	46½	48½	50½	52½	54½	56½	"

## Width, lower edge

Short Dress	47	48	49½	51½	53½	55½	57½	59½	61½	63½	Ins.
Long Dress	52	53	54½	56½	58½	60½	62½	64½	66½	68½	"

## Finished back length from base of neck

Short Dress	40¾	41	41¾	41¾	41¾	42	42¼	42¼	42¼	43	Ins.
Long Dress	53¾	53¾	53¾	54	54¼	54¼	54¼	55	55¼	55¼	"

\*with nap \*\*without nap

Très Facile

## ROBE EN TRICOT EN DEUX LONGUEURS PORTÉE VERS L'AVANT OU VERS L'ARRIÈRE ET CEINTURE-ÉCHARPE POUR JEUNES FEMMES

**Tissus Conseillés:** Tricotés jersey extensibles de acétate, coton, nylon, polyester ou rayonne tels que: Jersey de cire, Jersey mat, Tricot. Tricotés doubles extensibles de polyester ou laine. Reportez-vous à la règle Pick-A-Knit®.

**Merçerie:** Dentelle extensible (facultatif), ceinture (facultatif).

Tailles	8	10	12	14	16	18	20	22	24	26
Françaises	36	38	40	42	44	46	48	50	52	54
Européen	34	36	38	40	42	44	46	48	50	52

## MESURES DU CORPS: Choisissez la taille du patron basée sur les mesures du corps

Poitrine	80	83	87	92	97	102	107	112	117	122	cm
Taille	61	64	67	71	76	81	87	94	99	106	"

## Hanches (23cm au-dessous de la taille)

	85	88	92	97	102	107	112	117	122	127	cm
Dos du cou à la taille	40	40.5	41.5	42	42.5	43	44	44	44.5	44.5	"

## Robe courte

150cm*	3.0	3.0	3.1	3.2	3.3	3.4	3.4	3.5	3.7	3.8	m
--------	-----	-----	-----	-----	-----	-----	-----	-----	-----	-----	---

## Robe longue

150cm*	3.5	3.5	3.5	3.7	3.7	3.8	3.8	3.8	3.9	3.9	m
--------	-----	-----	-----	-----	-----	-----	-----	-----	-----	-----	---

## MESURES DES VÊTEMENTS FINI (Motif et aisance de port compris)

Poitrine	94	97	100	105	110	116	121	126	131	136	cm
Taille	94	97	100	105	110	116	121	126	131	136	"
Hanches	102	104	108	113	118	123	128	133	138	144	"

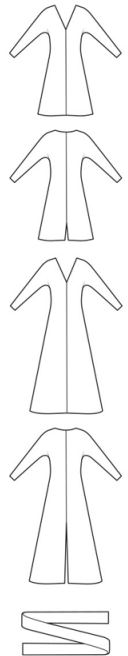
## Largeur à l'ourlet

Short Robe	119	122	126	131	136	141	146	151	156	161	cm
Long Robe	132	135	138	144	149	154	159	164	169	174	"

## Longueur finie – dos, votre nuque à l'ourlet

Short Robe	104	104	105	105	106	107	107	108	109	109	cm
Long Robe	135	136	137	137	138	138	139	140	140	141	"

\*avec sens \*\*sans sens



Use the 1 inch (2.54cm) box to ensure you are using rule at 100%

Utilisez la boîte de 2,54 cm pour vous assurer d'utiliser la règle à 100%.

Utilizar un cuadrado de 2.54 cm para asegurarse de estar usando la regla al 100%.

## PICK-A-KNIT® RULE

FOR THIS PATTERN - 4" (10 cm) OF KNIT FABRIC MUST STRETCH CROSSWISE FROM HERE  
POUR CE PATRON - LE JERSEY DOIT S'ÉTIRER DANS LA LARGEUR DE 4" (10 cm) DEPUIS ICI  
PARA ESTE PATRON - LAS MALLAS DEBEN ESTIRARSE A LO ANCHO POR 4" (10 cm) DESDE AQUI



TO HERE 35%  
JUSQUE LA 35%  
HASTA ALLA 35%



When using the Pick-A-Knit® rule to measure your fabrics stretch capacity, rule must be viewed or printed at 100%.

Quand vous utilisez la règle Pick-A-Knit® pour mesurer la capacité d'élasticité des tissus, la règle doit être visible ou imprimée à 100%.

Al utilizar la regla Pick-A-Knit® para medir la capacidad de elasticidad de las telas, la regla debe estar visible o impresa al 100%.

## metric chart converting inches and yards to centimeters and meters

Extra fabric needed to match plaids, stripes, one-way designs.									
Pattern sized for stretch knits only.									
See "suggested knits fabrics" for type of knits.									
Not suitable for bonded knits.									
		Sizes							
		8	10	12	14	16			
		Fabric required							
		Sleeve Dress							
		115 cm without nap	3.10	3.20	3.20	3.35	M		
		140 cm	2.90	2.90	3.00	3.10	10		
		150 cm	2.40	2.55	2.55	2.66	3.10		
		Long Dress							
		115 cm without nap	3.80	3.90	3.90	3.90	M		
		140 cm	3.10	3.10	3.10	3.70	7.5		
		150 cm	3.10	3.10	3.10	3.20	20		
		Garment Measurements							
		Finished back length of short dress	102.9	104.1	105.3	106.7	107.9	cm	
		Finished back length of long dress	136.6	137.2	137.8	138.4	139		
		Width of lower edge of short dress	114.9	117.2	121.2	126.3	131.3	cm	
		Width of lower edge of long dress	129.5	132	135.8	140.9	146		

## 5363 sewing directions

Shaded area is right side of fabric

The metric equivalent for inches is in parenthesis: 1/4" (6mm), 3/8" (9mm), 1/2" (1,2cm), 5/8" (1,5cm).

**NOTE:** Stitch 5/8" seams, unless otherwise stated, matching same numbered notches.

**THIS STYLE IS SIZED FOR STRETCH KNITS ONLY.**

**IT HAS A CLOSE TO THE BODY FIT.**

**FOLLOW THESE FEW SIMPLE RULES FOR KNIT FABRICS:**

Use loose but balanced tension and 10 to 12 stitches per inch (2,5cm).

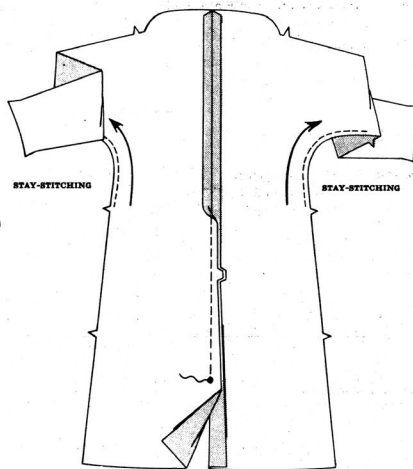
Use nylon or polyester thread and a fine needle.

For zig-zag machine, stitch seams with a narrow zig-zag stitch.

### short or long dress

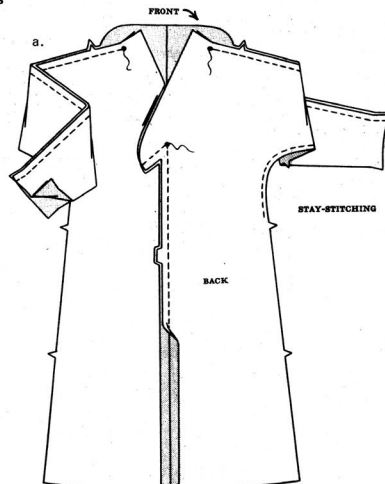
**NOTE:** Dress may be worn with front in back, as shown on front of envelope.

#### UNIT 1 front



Stitch center front seam along seam line above medium dot.

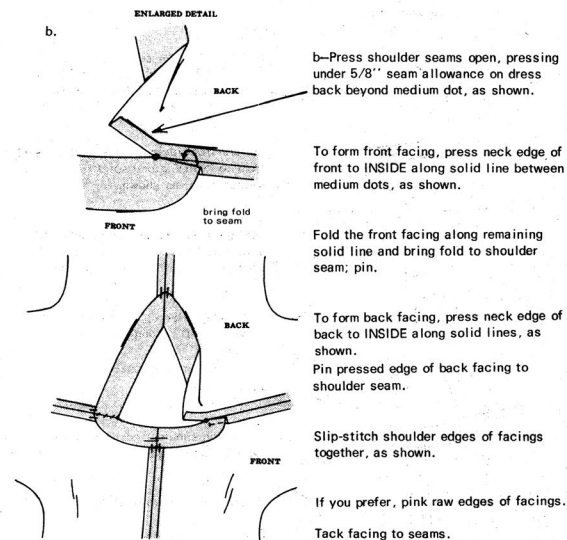
#### UNIT 2 back, seams and facings



a—Stitch center back seam along seam line, stitching thru small dot at inner corner, as shown.

Pin front to back at shoulder seams, matching medium dots.

Stitch from medium dot to lower edge of sleeve, as shown.



b—Press shoulder seams open, pressing under 5/8" seam allowance on dress back beyond medium dot, as shown.

To form front facing, press neck edge of front to INSIDE along solid line between medium dots, as shown.

Fold the front facing along remaining solid line and bring fold to shoulder seam; pin.

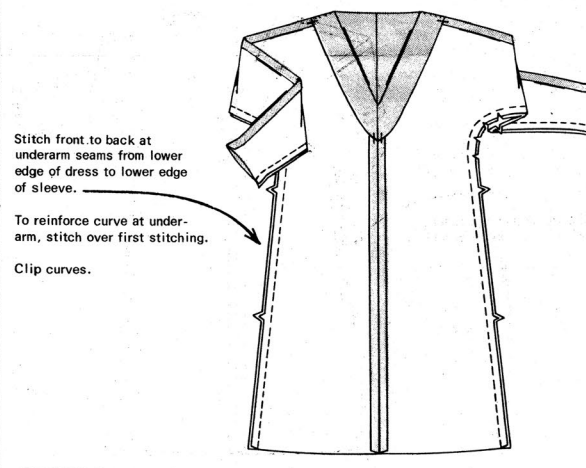
To form back facing, press neck edge of back to INSIDE along solid lines, as shown.

Pin pressed edge of back facing to shoulder seam.

Slip-stitch shoulder edges of facings together, as shown.

If you prefer, pink raw edges of facings. Tack facing to seams.

#### underarm seams



Stitch front to back at underarm seams from lower edge of dress to lower edge of sleeve.

To reinforce curve at underarm, stitch over first stitching.

Clip curves.

#### sleeve hems

Press up hem. Machine-stitch 1/4" from lower edge and pink...

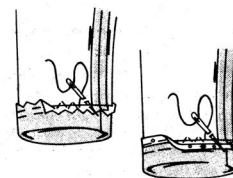
OR

Stitch stretch lace 1/4" over raw edge.

Baste 1/2" below raw edge.

Turn hem back about 1/4" and slip-stitch to sleeve, by inserting needle in underside of hem and then picking up one thread in sleeve.

Press hem flat over stitches.



#### hem and slit opening

Mark length.

Press up hem along marking.

Mark depth of hem; trim evenly.

Stitch 1/4" from raw edge and pink...

OR

Stitch one edge of stretch lace 1/4" over raw edge.

Baste 1/2" from raw edge.

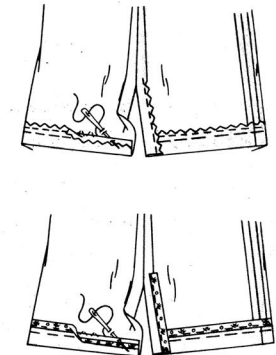
Turn hem back about 1/4" and slip-stitch to dress, by inserting needle in underside of hem and then picking up one thread in dress.

Press hem flat over stitches.

Finish raw edges of slit opening same as for hem.

Press slit openings to INSIDE along fold line, forming facings.

Sew facings same as hem.



#### sash and belt carriers

a—With RIGHT sides together, stitch facing to sash in 3/8" seam, leaving an opening to turn.

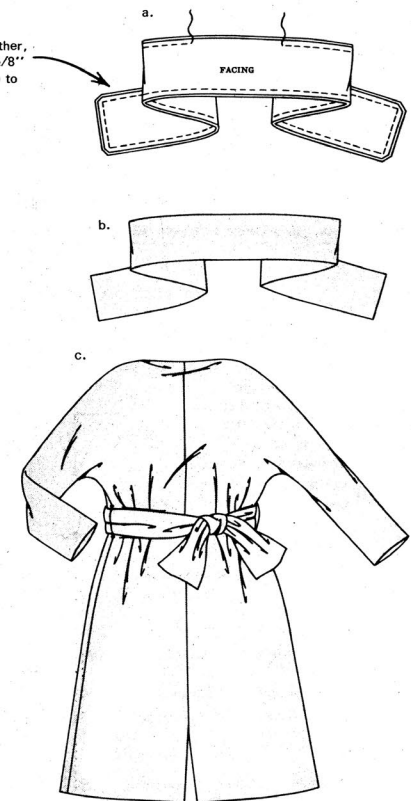
Trim seam and corners.

b—Turn sash; press. Slip-stitch opening.

c—Make thread carriers at side seams between small dots.

Wear sash thru carriers.

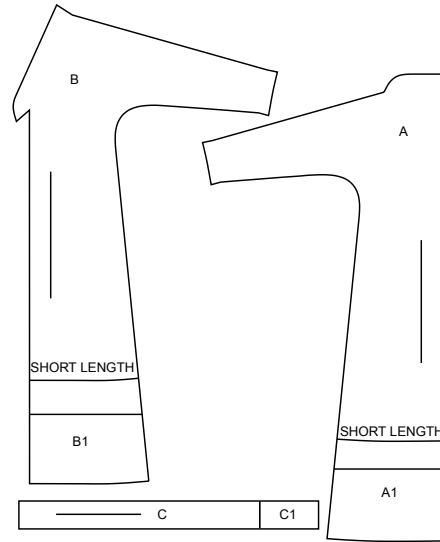
A purchased belt may be worn.



# Simplicity®

Thank you for purchasing this Simplicity pattern.  
We made every effort to provide you with a high quality product.

## SUPPLEMENTAL CUTTING LAYOUTS



A(A1) FRONT AND SLEEVE

B(B1) BACK AND SLEEVE

C(C1) SCARF

## General Directions

### The Pattern

- SYMBOLS**
- GRAIN LINE** Place on straight grain of fabric parallel to selvage
  - PLACE SOLID LINE** on fold of fabric.
  - CENTER FRONT OR BACK** of garment.
  - NOTCHES**
  - DOTS**
  - CUTTING LINE**
  - LENGTHEN OR SHORTEN LINES**

**SEAM ALLOWANCE:** 5/8" (1.5cm) unless otherwise stated is included but not printed on **MULTI-SIZE PATTERNS**. Mark your size with colored felt tip pen. See chart on tissue for how to use **MULTI-SIZE PATTERNS**.

### ADJUST IF NEEDED

Make adjustments before placing pattern on fabric.

**TO LENGTHEN:**  
Cut pattern between lengthen or shorten lines. Spread pattern evenly, the amount needed and tape to paper.

**TO SHORTEN:**  
At lengthen or shorten lines, make an even pleat taking up amount needed. Tape in place.

When lengthen or shorten lines are not given, make adjustments at lower edge of pattern.

### Cutting/Marking

#### BEFORE CUTTING:

PRESS pattern pieces with a warm dry iron. PRE-SHRINK fabric by pre-washing washables or steam-pressing non-washables.

CIRCLE your cutting layout.

PIN pattern to fabric as shown in Cutting Layouts.

• **FOR DOUBLE THICKNESS:** Fold fabric with **RIGHT** sides together.

• **FOR SINGLE THICKNESS:** Place fabric **RIGHT** side up.

• **FOR PILE, SHADED OR ONE WAY DESIGN FABRICS:** Use "with nap" layouts

#### AFTER CUTTING:

Transfer markings to **WRONG** side of fabric before removing pattern. Use pin and chalk method or dressmaker's tracing paper and wheel.

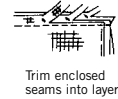
#### To Quick Mark:

- Snip edge of fabric to mark notches, ends of fold lines and center lines.
- Pin mark dots.



### Sewing

- SEW garment following **Sewing Directions**.
- PIN or machine-baste seams matching notches.
- STITCH 5/8" (1.5 cm) seams unless otherwise stated.
- PRESS seams open unless otherwise indicated clipping when necessary so seams will lie flat.
- TRIM seams to reduce bulk, as shown below.



Trim enclosed seams into layers



Trim corners



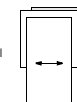
Clip inner curves



Notch outer curves

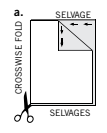
### SPECIAL CUTTING NOTES

★ If layout shows a piece extending past fold, cut out all pieces except piece that extends.

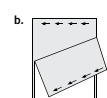


Open out fabric to single thickness. Cut extending piece on **RIGHT** side of fabric in position shown.

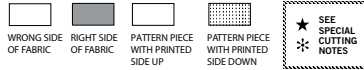
✱ Mark small arrows along both selvages indicating direction of nap or design. Fold fabric crosswise with **RIGHT** sides together, and cut along fold (a).



Turn one fabric layer around so arrows on both layers go in the same direction. Place **RIGHT** sides together (b).



## Cutting Layouts



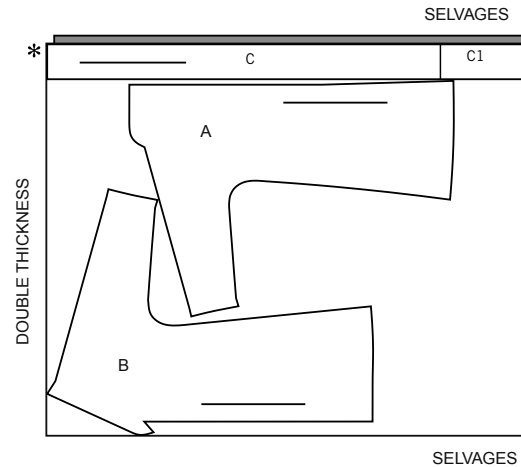
POSITION OF PATTERN PIECES MAY VARY SLIGHTLY ACCORDING TO YOUR PATTERN SIZE

ALL VIEWS SIZED FOR STRETCH KNITS ONLY

### SHORT DRESS

USE PIECES A B C

60" (150CM)  
WITH NAP  
ALL SIZES

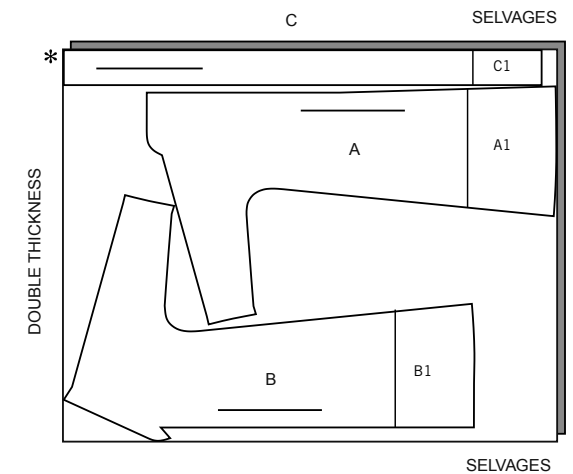


### LONG DRESS

**NOTE:** BEFORE CUTTING FABRIC, JOIN PIECES IN PARENTHESIS TO CORRESPONDING PIECES FOLLOWING INSTRUCTIONS ON TISSUE PATTERN.

USE PIECES A(A1) B(B1) C(C1)

60" (150CM)  
WITH NAP  
ALL SIZES





# Congrats!

You've completed your sewing adventure

---

## SHARE YOUR LOOK



Post your pattern and tag us  
[@simplicity\\_creative\\_group](#) and [#simplicitypatterns](#)  
for a chance to be featured on our social media.

Look for more PDF patterns at [simplicity.com](https://www.simplicity.com)

Have a question or need help with your sewing project call us at  
1-888-588-2700



Simplicity ©2024 a division of IG Design Group Americas Inc. • Atlanta, GA 30342 USA [www.thedesigngroup.com](https://www.thedesigngroup.com) • All Rights Reserved. [www.simplicity.com](https://www.simplicity.com) • Made in the U.S.A. Fabriqué aux États-Unis.

To be used for individual private home use only and not for commercial or manufacturing purposes. • A usage privé seulement et non à des fins commerciales ou de production en série. • Para uso privado solamente, no se puede utilizar con propósitos de comercialización o de producción en serie.