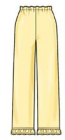


S3045

Simplicity

easy-to-sew



Easy

CHILDREN'S AND GIRLS' LOUNGE TOPS, GOWN, SHORTS AND PANTS

Suggested Fabrics: A,B,C,D,E: Cotton/Cotton Blends, Flannel. **Interfacing:** Fusible Knit.

Notions: A,B: Four 1/2" (1.3cm) buttons. C: Five 1/2" (1.3cm) buttons. D,E: 1/4 yd. (0.9m) of 3/4" (2cm) elastic.

Sizes	3	4	5	6	7	8	10	12	14	
BODY MEASUREMENTS: Select pattern size based on body measurements										
Chest	22	23	24	25	26	27	28 1/2	30	32	Ins.
Waist	20 1/2	21	21 1/2	22	23	23 1/2	24 1/2	25 1/2	26 1/2	"
Hip	—	24	25	26	27	28	30	32	34	"
Back-neck to waist	9	9 1/2	10	10 1/2	11 1/2	12	12 1/2	13 1/2	14 1/2	"
Approx. Height	38	41	44	47	50	52	56	58 1/2	61	"
Top A	45**	1 1/4	1 1/4	1 1/4	1 1/4	1 1/4	1 1/4	2 1/4	2 1/4	Yds.
Interfacing A,B	20" - 1/4 yd.									
Top B	45**	1 1/4	1 1/4	1 1/4	1 1/4	1 1/4	1 1/4	1 1/4	1 1/4	Yds.
Gown C	45**	1 1/4	1 1/4	1 1/4	1 1/4	2 1/4	2 1/4	2 1/4	2 1/4	Yds.
Interfacing	20" - 1 1/4 yds.									
Shorts D	45**	3/4	3/4	3/4	3/4	3/4	1	1 1/4	1 1/4	Yds.
Pants E	45**	1	1	1 1/4	1 1/4	1 1/4	1 1/4	2 1/4	2 1/4	Yds.

FINISHED GARMENT MEASUREMENTS (Includes Design and Wearing Ease)

A,B,C Chest	27 1/2	28 1/2	29 1/2	30 1/2	31 1/2	32 1/2	34	35 1/2	37 1/2	Ins.
A,B,C Waist	28 1/2	29 1/2	30 1/2	31 1/2	33	34	35 1/2	37	39	"
C Hip	31	32	33	34	36 1/2	37 1/2	39 1/2	41 1/2	43 1/2	"
D,E Hip	26 1/2	27 1/2	28 1/2	29 1/2	31 1/2	32 1/2	34 1/2	36 1/2	38 1/2	"
Width, lower edge										
Top A,B	31	32	33	34	37	38	40	42	44	Ins.
Gown C	33 1/2	34 1/2	35 1/2	36 1/2	40	41	43	45	47	"
Width, each leg										
Shorts D	16 1/2	16 1/2	17 1/2	17 1/2	19 1/2	20	20 1/2	21	21 1/2	Ins.
Pants E	12 1/2	13	13 1/2	14	14 1/2	15	15 1/2	16	16 1/2	"
Finished back length from base of neck										
Top A,B (incl. ruffle)	15 1/2	17	19	21	19 1/2	21 1/2	23 1/2	25 1/2	27 1/2	Ins.
Gown C (incl. ruffle)										
	21	22 1/2	24 1/2	26 1/2	29 1/2	31 1/2	33 1/2	35 1/2	37 1/2	Ins.
Finished side length from waist										
Shorts D (incl. ruffle)	11 1/2	12	12 1/2	13	10 1/2	12	14 1/2	17	19 1/2	Ins.
Pants E (incl. ruffle)	23	24 1/2	26	27 1/2	28 1/2	30	33 1/2	36 1/2	38	"

*with nap **without nap

Facile

HAUTS, CHEMISE LONGUE, SHORT ET PANTALON DE DÉTENTE POUR ENFANTS ET FILLETES

Tissus Conseillés: A,B,C,D,E: Coton/Cotonnades, Flanelle. **Entoilage:** Thermocollant en tricot.

Mercerie: A,B: 4 boutons de 1.3cm. C: 5 boutons de 1.3cm. D,E: 0.9m d'élastique de 2cm.

Tailles	3	4	5	6	7	8	10	12	14		
MESURES DU CORPS: Choisissez la taille du patron basée sur les mesures du corps											
Poitrine	56	58	61	64	66	69	73	76	81	cm	
Taille	52	53	55	56	58	60	62	65	67	"	
Hanches	—	61	64	66	69	71	76	81	87	"	
Dos du cou à la taille	23	24	25.5	27	29.5	31	32.5	34.5	36	"	
Taille approx.	97	104	112	119	127	132	142	149	155	"	
Haut A	115cm*	1.1	1.1	1.1	1.3	1.5	1.6	1.7	1.9	2.1	m
Entoilage A,B	51cm - 08m										
Haut B	115cm*	1.0	1.0	1.0	1.1	1.3	1.4	1.6	1.7	m	
Chemise Longue C	115cm*	1.3	1.3	1.4	1.5	1.9	1.9	2.1	2.2	2.3	m
Entoilage	51cm - 1.0m										
Short D	115cm*	0.6	0.6	0.7	0.7	0.8	0.8	0.9	1.1	1.1	m
Pantalon E	115cm*	0.9	0.9	1.0	1.1	1.5	1.6	1.7	1.9	2.2	m

MESURES DES VÊTEMENTS FINI (Motif et aisance de port compris)

A,B,C Poitrine	70	73	76	78	80	83	86	90	95	cm
A,B,C Taille	72	75	77	80	84	86	90	94	99	"
C Hanches	79	81	84	86	93	95	100	105	110	"
D,E Hanches	67	70	70	75	80	83	88	93	98	"
Largueur à l'ourlet										
Haut A,B	79	81	84	86	94	97	102	107	112	cm
Chemise longue C	84	87	90	92	102	104	109	114	119	"
Largueur, chaque jambe										
Short D	41	43	44	45	50	51	52	53	55	cm
Pantalon E	32	33	34	36	37	38	39	41	42	"
Longueur finie – dos, votre nuque à l'ourlet										
Haut A,B (y compris le volant)	39	43	48	53	50	55	60	65	70	cm
Chemise longue C (y compris le volant)										
	53	57	62	67	75	80	85	90	95	cm
Longueur finie – côté, taille à l'ourlet										
Short D (y compris le volant)	29	30	32	33	27	30	37	43	50	cm
Pantalon E (y compris le volant)	58	62	66	70	73	76	85	93	97	"

*avec sens **sans sens



A



B



C



D



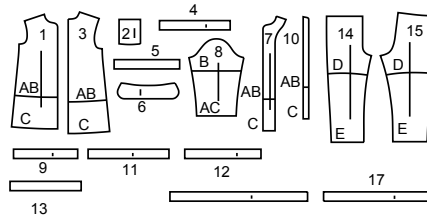
E

Simplicity®

Thank you for purchasing this Simplicity pattern. We made every effort to provide you with a high quality product.



17 PIECES



- 1 Front-A,B,C
- 2 Pocket-A,C
- 3 Back-A,B,C
- 4 Front Ruffle-A,B
- 5 Back Ruffle-A,B
- 6 Collar-A,B,C
- 8 Sleeve-A,B,C
- 9 Sleeve Ruffle-A,C
- 10 Guide for Buttonholes-A,B,C
- 11 Sleeve Ruffle-B
- 12 Front Ruffle-C
- 13 Back Ruffle-C
- 14 Front-D,E
- 15 Back-D,E
- 16 Ruffle-D
- 17 Ruffle-E

General Directions

The Pattern

- SYMBOLS**
- ↔ GRAIN LINE Place on straight grain of fabric parallel to selvage
 - ⇄ PLACE SOLID LINE on fold of fabric.
 - - - - - CENTER FRONT OR BACK of garment.
 - ∇ NOTCHES
 - ○ DOTS
 - CUTTING LINE
 - LENGTHEN OR SHORTEN LINES

SEAM ALLOWANCE: 5/8" (1.5cm) unless otherwise stated is included but not printed on MULTI-SIZE PATTERNS. Mark your size with colored felt tip pen. See chart on tissue for how to use MULTI-SIZE PATTERNS.

ADJUST IF NEEDED

Make adjustments before placing pattern on fabric.

TO LENGTHEN: Cut pattern between lengthen or shorten lines. Spread pattern evenly, the amount needed and tape to paper.

TO SHORTEN: At lengthen or shorten lines, make an even pleat taking up amount needed. Tape in place.

When lengthen or shorten lines are not given, make adjustments at lower edge of pattern.

Cutting/Marking

BEFORE CUTTING: PRESS pattern pieces with a warm dry iron. PRE-SHRINK fabric by pre-washing washables or steam-pressing non-washables.

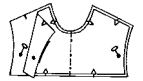
CIRCLE your cutting layout. PIN pattern to fabric as shown in Cutting Layouts.

- FOR DOUBLE THICKNESS: Fold fabric with RIGHT sides together.
- FOR SINGLE THICKNESS: Place fabric RIGHT side up.
- FOR PILE, SHADED OR ONE WAY DESIGN FABRICS: Use "with nap" layouts

AFTER CUTTING: Transfer markings to WRONG side of fabric before removing pattern. Use pin and chalk method or dressmaker's tracing paper and wheel.

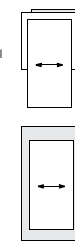
To Quick Mark:

- Snip edge of fabric to mark notches, ends of fold lines and center lines.
- Pin mark dots.

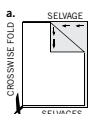


SPECIAL CUTTING NOTES

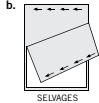
★ If layout shows a piece extending past fold, cut out all pieces except piece that extends.



✱ Mark small arrows along both selvages indicating direction of nap or design. Fold fabric crosswise with RIGHT sides together, and cut along fold (a).

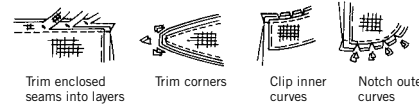


Turn one fabric layer around so arrows on both layers go in the same direction. Place RIGHT sides together (b).

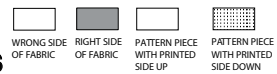


Sewing

- SEW garment following Sewing Directions.
- PIN or machine-baste seams matching notches.
- STITCH 5/8" (1.5 cm) seams unless otherwise stated.
- PRESS seams open unless otherwise indicated clipping when necessary so seams will lie flat.
- TRIM seams to reduce bulk, as shown below.



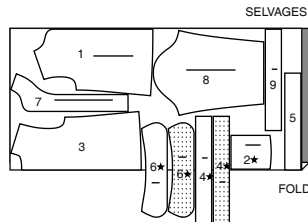
Cutting Layouts



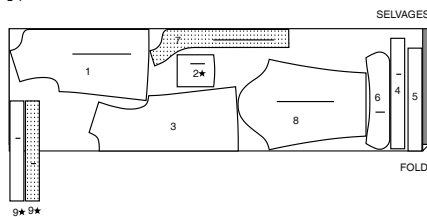
POSITION OF PATTERN PIECES MAY VARY SLIGHTLY ACCORDING TO YOUR PATTERN SIZE

TOP A

45" (115CM) WITH NAP
SIZES 3 4 5 6

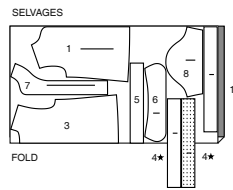


45" (115CM) WITH NAP
SIZES 7 8 10 12 14

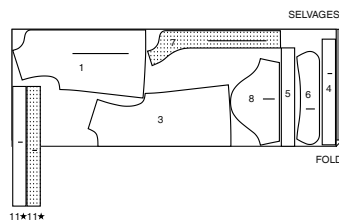


TOP B

45" (115CM) WITH NAP
SIZES 3 4 5 6

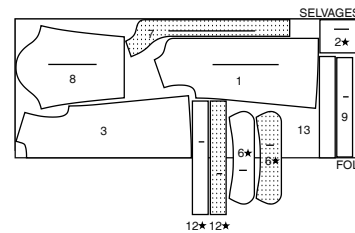


45" (115CM) WITH NAP
SIZES 7 8 10 12 14

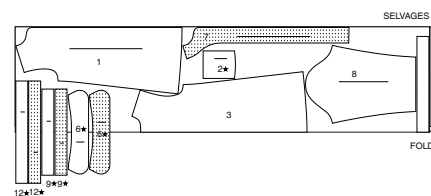


GOWN C

45" (115CM) WITH NAP
SIZES 3 4 5 6



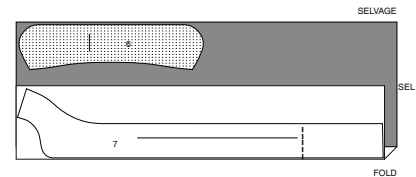
45" (115CM) WITH NAP
SIZES 7 8 10 12 14



INTERFACING A,B,C

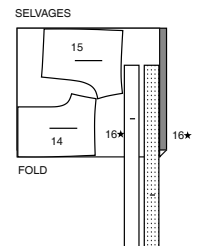
20" (51CM) ALL SIZES

NOTE: DASHED LINE ON PIECE 7 IN LAYOUT INDICATES CUTTING LINE FOR VIEWS A, B



SHORTS D

45" (115CM) WITH NAP
SIZES 3 4 5 6



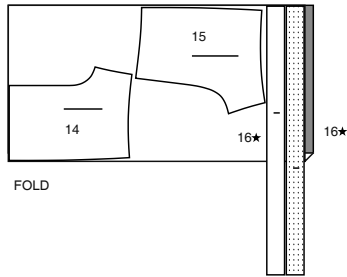
CUTTING LAYOUTS CONTINUED ON PAGE 2

S3045

2 of 4

45" (115CM)
WITH NAP
SIZES 7 8 10 12 14

SELVAGES

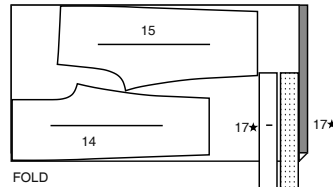


PANTS E

USE PIECES 14 15 17

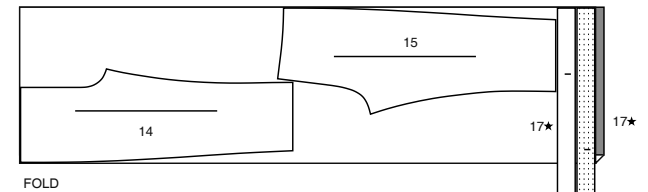
45" (115CM)
WITH NAP
SIZES 3 4 5 6

SELVAGES

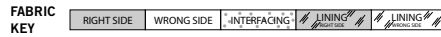


45" (115CM)
WITH NAP
SIZES 7 8 10 12 14

SELVAGES



Sewing Directions



Read **General Directions** on page 1 before you begin.

Sewing methods in **BOLD TYPE** have Sewing Tutorial Video available. Scan **QR CODE** to watch videos:

BABY HEM - See **Hems**: "sewing a baby hem" video.

EDGESTITCH - See **Machine Stitches**: "how to edgestitch" video.

FINISH - See **Seams**: "how to finish seam allowances" video.

GATHER - See **Gathering**: "sewing gathering with yarn" video.

SLIPSTITCH - Slide needle through a folded edge, then pick up a thread of underneath fabric.

STAYSTITCH - See **Machine Stitches**: "how to do stay-stitching" video.

TOPSTITCH - See **Machine Stitches**: "how to topstitch" video.

TRIM - See **How to Sew: Trim, Clip, and Layer Seams**" video.

UNDERSTITCH - See **Machine Stitches**: "how to understitch" video.

PATTERN PIECES WILL BE IDENTIFIED BY NUMBERS THE FIRST TIME THEY ARE USED.

STITCH SEAMS WITH RIGHT SIDES TOGETHER UNLESS OTHERWISE STATED.

TOP A, B, C

NOTE: The first view mentioned will be illustrated unless otherwise indicated.

- 1. STAYSTITCH** neck edge of **FRONT** (1) sections 1/2" (1.3cm) from raw edge in direction of arrows, as shown. STAYSTITCHING won't be shown in the following illustrations.

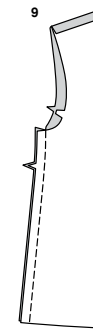
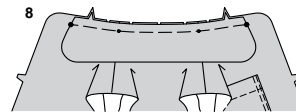
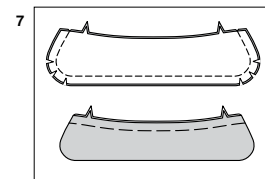
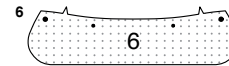
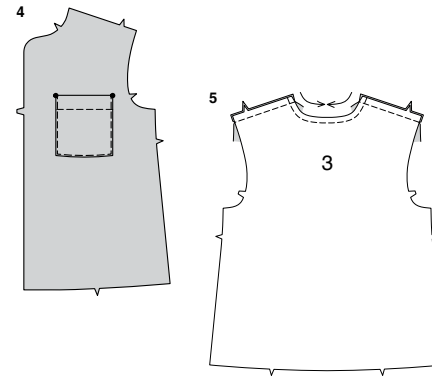
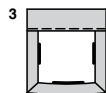
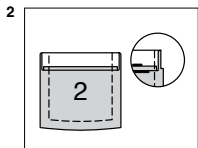
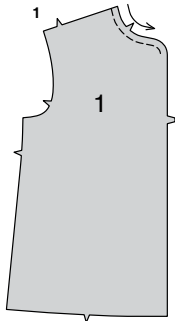
POCKET A, C

- Press under 1/4" (6mm) on upper edge of **POCKET** (2). Turn upper edge to outside along fold line, forming a facing. Stitch along seam line on raw edges. Trim seam allowance in the facing area to 1/4" (6mm).
- Turn corners **RIGHT** side out, turning facing to the **WRONG** side; press, pressing under raw edges along stitching. Stitch facing close to inner edge.

SEWING TUTORIALS



Build your skills viewing short, easy-to-follow videos at [simplicity.com/sewingtutorials](https://www.simplicity.com/sewingtutorials)



- Pin pocket to **LEFT** front, placing upper corners at large dots. **EDGESTITCH** close to side and lower edges.

CONTINUE AS FOLLOWS FOR ALL VIEWS

- STAYSTITCH** neck edge of **BACK** (3) in direction of arrows. Stitch back to front at shoulders.

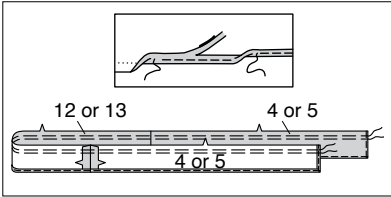
- Apply fusible interfacing to **WRONG** side of one **COLLAR** (6) section, following manufacturer's directions. The remaining section will be the facing.

- With **RIGHT** sides together, stitch collar to facing, leaving notched edges open. **TRIM** seam; clip curves. Turn collar; press. Baste raw edge together.

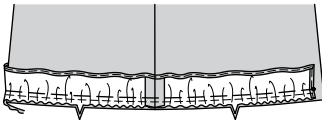
- Clip neck edge of top to stay-stitching. On **OUTSIDE**, pin collar (facing side) to neck edge, matching centers back and large dots; placing small dots at shoulder seams; baste.

- Stitch back to fronts at sides.

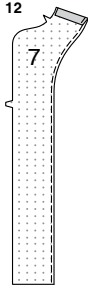
10



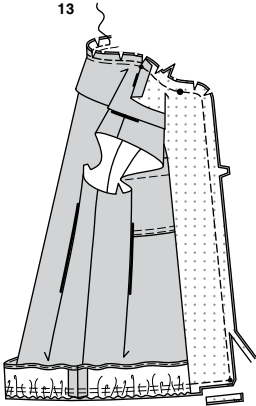
11



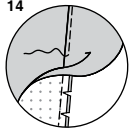
12



13



14



- 10.** Stitch FRONT RUFFLE (4 or 12) sections to BACK RUFFLE (5 or 13) at sides, matching notches.

To make a **BABY HEM** on ends and on long unnotched edge, press under 1/4" (6mm); stitch close to pressed edge. Trim close to stitching.

Press under another 1/8" (3mm) and stitch in place. Using long machine-stitches, GATHER notched edge of ruffle along 5/8" (1.5cm) seam line and 1/4" (6mm) away in seam allowance.

- 11.** Pin ruffle to lower edge of top, matching small dots, side seams, and centers back.
Pull up gathering stitches to fit, distributing fullness evenly; baste.

- 12.** Apply fusible interfacing to WRONG side of FRONT FACING (7) sections.

To **FINISH** long unnotched edge, stitch 1/4" (6mm) from edge, then zigzag or overlock/serge over the edge OR turn under along stitching and stitch. (Your chosen seam finish will not be shown). Press under seam allowance on shoulder edge.

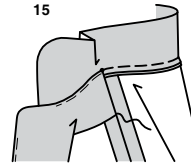
- 13.** With RIGHT sides together and raw edges even, pin facing to neck and front edges, (over ends of collar and ruffle), placing shoulder edge of facing at small dots, matching large dots, and remaining small dots.

Stitch outer edges, pivoting with needle in fabric at lower small dots and keeping free edges of collar and ruffle out of the way. Stitch neck edge again 1/4" (6mm) from first stitching and **FINISH**.

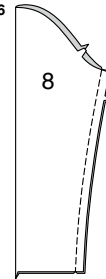
TRIM seams and corners; clip curves.
Clip seam allowances at small dots through all thicknesses.
FINISH seam allowances between upper small dots.

- 14.** **UNDERSTITCH** as far as possible by pressing facing and seam away from top, stitching through facing and seam allowances close to seam.

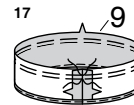
15



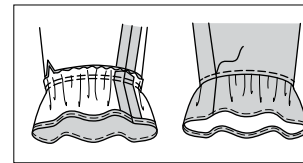
16



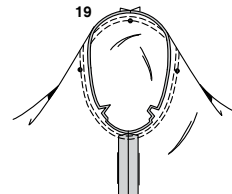
17



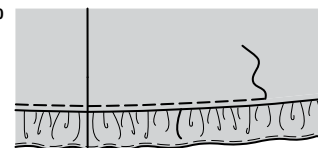
18



19



20



- 15.** Turn facing to INSIDE, turning out collar and ruffle. Press, pressing seams toward top.
SLIPSTITCH pressed edge of facing over shoulder seam.

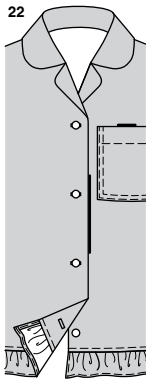
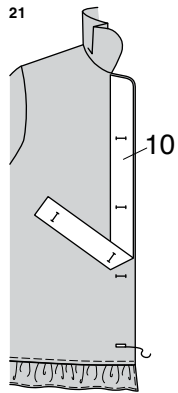
- 16.** Stitch underarm seam of SLEEVE (8).

- 17.** Stitch ends of SLEEVE RUFFLE (9).
GATHER notched edge.
Make a **BABY HEM** on unnotched edge.

- 18.** Pin sleeve ruffe to lower edge sleeve, matching seams. Pull up gathering stitches to fit; baste. Stitch. Press ruffle out, pressing seam toward sleeve. On OUTSIDE, **TOPSTITCH** 1/4" (6mm) from ruffle seam.

- 19.** Turn sleeve RIGHT side out. Hold top WRONG side out with armhole toward you. With RIGHT sides together, pin sleeve to armhole edge, matching underarm seams and small dots. Baste. Stitch. Stitch again 1/8" (3mm) from first stitching. Trim seam below notches close to stitching. Press only the seam allowance, shrinking out fullness.

- 20.** On OUTSIDE, **TOPSTITCH** lower edge of top 1/4" (6mm) from ruffle seam.

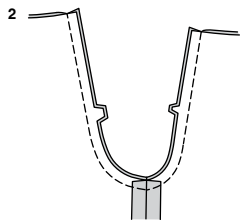
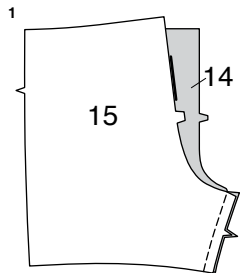


- 21.** To mark buttonholes in RIGHT front, place GUIDE FOR BUTTONHOLES (10) along finished edge of top, as shown, matching centers.
Transfer buttonhole markings to RIGHT front.
Make buttonholes at markings.

- 22.** Lap RIGHT front over LEFT, matching centers front.
Sew buttons under buttonholes.

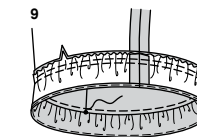
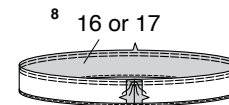
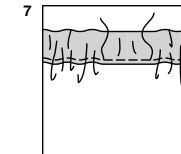
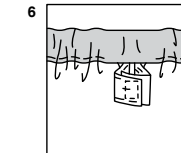
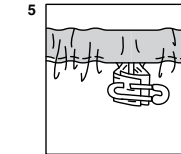
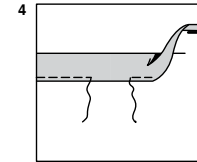
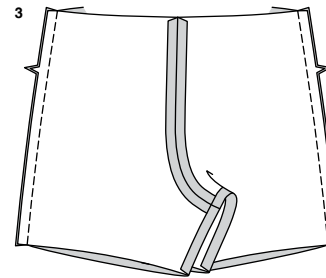
SHORTS D OR PANTS E

NOTE: First View mentioned will be shown unless otherwise mentioned.



- 1.** Stitch pants FRONT (14) to BACK (15) at inner leg seams.

- 2.** With RIGHT sides together, pin center seam, matching inner leg seams and notches. Stitch.
To reinforce seam, stitch again over first stitching.



- 3.** Stitch front to back at side seams.

- 4.** Press 1-1/8" (2.8cm) on upper edge to INSIDE, forming a casing.
Press under 1/4" (6mm) on raw edge.
Stitch close to lower edge of casing, leaving an opening to insert elastic.

- 5.** Cut a piece of elastic to fit waist, plus 1" (2.5cm). Insert elastic through casing.
Overlap ends and hold with a safety pin.
Try on shorts or pants and adjust to fit.

- 6.** Stitch ends of elastic together securely.

- 7.** Stitch opening closed.
TIP- To secure elastic so it won't twist in wearing, stitch through all thicknesses of casing in the groove of each seam.

- 8.** Stitch ends of RUFFLE (16 or 17).
Using long machine-stitches, **GATHER** notched edge of ruffle along 5/8" (1.5cm) seam line and 1/4" (6mm) away in seam allowance.
To make a **BABY HEM** on notched edge, press under 1/4" (6mm); stitch close to pressed edge. Trim close to stitching.
Press under another 1/8" (3mm) and stitch in place.

- 9.** Pin ruffle to lower edge, placing small dots at side seams and matching inner seams. Pull up gathering stitches to fit; baste. Stitch.
Press ruffle out, pressing seam toward ruffle.
On OUTSIDE, **TOPSTITCH** lower edge of shorts or pants 1/4" (6mm) from seam.
TIP- It's easier to stitch hem in a circle if you keep the RIGHT side of the leg against the machine with the INSIDE facing you and the needle INSIDE the circle, as shown.



Congrats!

You've completed your sewing adventure

**SHARE
YOUR** LOOK



Post your pattern and tag us
[@simplicity_creative_group](#) and [#simplicitypatterns](#)
for a chance to be featured on our social media.

Look for more PDF patterns at [simplicity.com](https://www.simplicity.com)

Have a question or need help with your sewing project call us at
1-888-588-2700



Simplicity ©2024 a division of IG Design Group Americas Inc. • Atlanta, GA 30342 USA www.thedesigngroup.com • All Rights Reserved. www.simplicity.com • Made in the U.S.A. Fabriqué aux États-Unis.

To be used for individual private home use only and not for commercial or manufacturing purposes. • A usage privé seulement et non à des fins commerciales ou de production en série. • Para uso privado solamente, no se puede utilizar con propósitos de comercialización o de producción en serie.