

S3044

Simplicity



Average

CHILDREN'S AND GIRLS' SKIRTS, JACKET AND KNIT TOP

Suggested Fabrics: A: Cotton Knit. See Pick-A-Knit® Rule. B: Lightweight Synthetic Leather. C,D: Cotton/Cotton Blends, Poly Satin. **Contrast D:** Tulle. **Interfacing:** Lightweight Fusible.

Notions: A: ¼ yd. (0.6m) of ¾" (1cm) elastic, one ½" (1.3cm) button. C,D: 7" (18cm) invisible zipper for Children and Girls (adjust to fit for Children), one hook and bar.

Sizes	3	4	5	6	7	8	10	12	14
-------	---	---	---	---	---	---	----	----	----

BODY MEASUREMENTS: Select pattern size based on body measurements

Chest	22	23	24	25	26	27	28½	30	32	Ins.
Waist	20½	21	21½	22	23	23½	24½	25½	26½	"
Hip	—	24	25	26	27	28	30	32	34	"
Back-neck to waist	9	9½	10	10½	11½	12	12¾	13½	14¼	"
Approx. Height	38	41	44	47	50	52	56	58½	61	"

Top A	60**	¾	¾	1	1	1¼	1¼	1¼	1¼	1¼	Yds.
Interfacing	20" - ¾ yd.										

Jacket B	54**	1¼	1¼	1¼	1¼	1¼	1¼	1¼	1¼	1¼	Yds.
Interfacing	20" - ¾ yd.										

Skirt C,D	45**	1	1	1	1	1	1¼	1¼	1¼	1¼	Yds.
Interfacing	20" - 1 yd.										

Contrast D (Front and Back Overlay)	72"	2½	2½	2½	2½	2¾	2¾	2¾	2¾	2¾	Yds.
-------------------------------------	-----	----	----	----	----	----	----	----	----	----	------

FINISHED GARMENT MEASUREMENTS (Includes Design and Wearing Ease)

A Chest	24	25	26	27	26½	27½	29	30½	32½	Ins.
B Chest	26½	27½	28½	29½	29½	30½	32	33½	35½	"
A Waist	23½	24½	25½	26½	26	27	28½	30	32	"
B Waist	26½	27½	28½	29½	29	30	31½	33	35	"
C,D Waist	21	22	23	24	23	24	25½	27	29	"

Width, lower edge	24	25	26	27	26½	27½	29½	31½	33½	Ins.
-------------------	----	----	----	----	-----	-----	-----	-----	-----	------

Top A	12	12½	13	13½	15¼	15½	16	16½	17	Ins.
-------	----	-----	----	-----	-----	-----	----	-----	----	------

Jacket B	11	11½	12	12½	15	15¼	16¼	16¾	16¾	"
----------	----	-----	----	-----	----	-----	-----	-----	-----	---

Finished back length from base of neck	11	11½	12	12½	15	15¼	16¼	16¾	16¾	"
--	----	-----	----	-----	----	-----	-----	-----	-----	---

Top A	12	12½	13	13½	15¼	15½	16	16½	17	Ins.
-------	----	-----	----	-----	-----	-----	----	-----	----	------

Jacket B	11	11½	12	12½	15	15¼	16¼	16¾	16¾	"
----------	----	-----	----	-----	----	-----	-----	-----	-----	---

Finished back length from waist	11	11½	12	12½	15	15¼	16¼	16¾	16¾	"
---------------------------------	----	-----	----	-----	----	-----	-----	-----	-----	---

Skirt C,D	12¼	13	13¾	14¼	14¼	15	16	17	17¾	Ins.
-----------	-----	----	-----	-----	-----	----	----	----	-----	------

Top A	12	12½	13	13½	15¼	15½	16	16½	17	Ins.
-------	----	-----	----	-----	-----	-----	----	-----	----	------

Jacket B	11	11½	12	12½	15	15¼	16¼	16¾	16¾	"
----------	----	-----	----	-----	----	-----	-----	-----	-----	---

Finished back length from waist	11	11½	12	12½	15	15¼	16¼	16¾	16¾	"
---------------------------------	----	-----	----	-----	----	-----	-----	-----	-----	---

Skirt C,D	12¼	13	13¾	14¼	14¼	15	16	17	17¾	Ins.
-----------	-----	----	-----	-----	-----	----	----	----	-----	------

Top A	12	12½	13	13½	15¼	15½	16	16½	17	Ins.
-------	----	-----	----	-----	-----	-----	----	-----	----	------

Jacket B	11	11½	12	12½	15	15¼	16¼	16¾	16¾	"
----------	----	-----	----	-----	----	-----	-----	-----	-----	---

Finished back length from waist	11	11½	12	12½	15	15¼	16¼	16¾	16¾	"
---------------------------------	----	-----	----	-----	----	-----	-----	-----	-----	---

Skirt C,D	12¼	13	13¾	14¼	14¼	15	16	17	17¾	Ins.
-----------	-----	----	-----	-----	-----	----	----	----	-----	------

Top A	12	12½	13	13½	15¼	15½	16	16½	17	Ins.
-------	----	-----	----	-----	-----	-----	----	-----	----	------

Jacket B	11	11½	12	12½	15	15¼	16¼	16¾	16¾	"
----------	----	-----	----	-----	----	-----	-----	-----	-----	---

Finished back length from waist	11	11½	12	12½	15	15¼	16¼	16¾	16¾	"
---------------------------------	----	-----	----	-----	----	-----	-----	-----	-----	---

Skirt C,D	12¼	13	13¾	14¼	14¼	15	16	17	17¾	Ins.
-----------	-----	----	-----	-----	-----	----	----	----	-----	------

Top A	12	12½	13	13½	15¼	15½	16	16½	17	Ins.
-------	----	-----	----	-----	-----	-----	----	-----	----	------

Jacket B	11	11½	12	12½	15	15¼	16¼	16¾	16¾	"
----------	----	-----	----	-----	----	-----	-----	-----	-----	---

Finished back length from waist	11	11½	12	12½	15	15¼	16¼	16¾	16¾	"
---------------------------------	----	-----	----	-----	----	-----	-----	-----	-----	---

Skirt C,D	12¼	13	13¾	14¼	14¼	15	16	17	17¾	Ins.
-----------	-----	----	-----	-----	-----	----	----	----	-----	------

Top A	12	12½	13	13½	15¼	15½	16	16½	17	Ins.
-------	----	-----	----	-----	-----	-----	----	-----	----	------

Jacket B	11	11½	12	12½	15	15¼	16¼	16¾	16¾	"
----------	----	-----	----	-----	----	-----	-----	-----	-----	---

Finished back length from waist	11	11½	12	12½	15	15¼	16¼	16¾	16¾	"
---------------------------------	----	-----	----	-----	----	-----	-----	-----	-----	---

Skirt C,D	12¼	13	13¾	14¼	14¼	15	16	17	17¾	Ins.
-----------	-----	----	-----	-----	-----	----	----	----	-----	------

Top A	12	12½	13	13½	15¼	15½	16	16½	17	Ins.
-------	----	-----	----	-----	-----	-----	----	-----	----	------

Jacket B	11	11½	12	12½	15	15¼	16¼	16¾	16¾	"
----------	----	-----	----	-----	----	-----	-----	-----	-----	---

Finished back length from waist	11	11½	12	12½	15	15¼	16¼	16¾	16¾	"
---------------------------------	----	-----	----	-----	----	-----	-----	-----	-----	---

Skirt C,D	12¼	13	13¾	14¼	14¼	15	16	17	17¾	Ins.
-----------	-----	----	-----	-----	-----	----	----	----	-----	------

Top A	12	12½	13	13½	15¼	15½	16	16½	17	Ins.
-------	----	-----	----	-----	-----	-----	----	-----	----	------

Jacket B	11	11½	12	12½	15	15¼	16¼	16¾	16¾	"
----------	----	-----	----	-----	----	-----	-----	-----	-----	---

Finished back length from waist	11	11½	12	12½	15	15¼	16¼	16¾	16¾	"
---------------------------------	----	-----	----	-----	----	-----	-----	-----	-----	---

Skirt C,D	12¼	13	13¾	14¼	14¼	15	16	17	17¾	Ins.
-----------	-----	----	-----	-----	-----	----	----	----	-----	------

Top A	12	12½	13	13½	15¼	15½	16	16½	17	Ins.
-------	----	-----	----	-----	-----	-----	----	-----	----	------

Jacket B	11	11½	12	12½	15	15¼	16¼	16¾	16¾	"
----------	----	-----	----	-----	----	-----	-----	-----	-----	---

Finished back length from waist	11	11½	12	12½	15	15¼	16¼	16¾	16¾	"
---------------------------------	----	-----	----	-----	----	-----	-----	-----	-----	---

Moins Facile

JUPES, VESTE ET HAUT EN TRICOT POUR ENFANTS ET FILLETTES

Tissus Conseillés: A: Tricot de coton. Reportez-vous à la règle Pick-A-Knit®. B: Cuir synthétique de poids léger. C,D: Coton/Cotonnades, Satin de polyester. **Contraste D:** Tul. **Entoilage:** Thermocollant léger.

Mercurie: A: 0.6m d'élastique de 1cm, 1 bouton de 1.3cm. C,D: 1 fermeture à glissière invisible de 18cm pour enfants et fillettes (adaptez pour ajuster pour enfants), 1 crochet pour jupe.

Tailles	3	4	5	6	7	8	10	12	14
---------	---	---	---	---	---	---	----	----	----

MESURES DU CORPS: Choisissez la taille du patron basée sur les mesures du corps

Poitrine	56	58	61	64	66	69	73	76	81	cm
Taille	52	53	55	56	58	60	62	65	67	"
Hanches	—	61	64	66	69	71	76	81	87	"
Dos du cou à la taille	23	24	25.5	27	29.5	31	32.5	34.5	36	"
Taille approx.	97	104	112	119	127	132	142	149	155	"

Haut A	150cm*	0.8	0.8	0.9	0.9	1.0	1.0	1.1	1.4	m	
Entoilage	51cm - 0.3m										

Veste B	140cm*	1.0	1.0	1.1	1.1	1.3	1.3	1.4	1.5	m	
Entoilage	51cm - 0.7m										

Jupe C,D	115cm*	0.8	0.9	0.9	0.9	0.9	1.0	1.0	1.1	1.1	m
Entoilage	51cm - 0.9m										

Contraste D (Superposée de jupe devant et dos)	183cm	2.2	2.2	2.2	2.2	2.5	2.5	2.5	2.5	2.5	m
--	-------	-----	-----	-----	-----	-----	-----	-----	-----	-----	---

MESURES DES VÊTEMENTS FINI (Motif et aisance de port compris)

A Poitrine	61	64	66	69	67	70	74	77	83	cm
B Poitrine	67	70	72	75	75	77	81	85	90	"
A Taille	60	62	65	67	66	69	72	76	81	"
B Taille	67	70	72	75	74	76	80	84	89	"
C,D Taille	53	56	58	61	58	61	65	69	74	"

Largeur à l'ourlet	61	64	66	69	67	70	74	77	83	cm
--------------------	----	----	----	----	----	----	----	----	----	----

Haut A	61	64	66	69	67	70	74	77	83	cm
--------	----	----	----	----	----	----	----	----	----	----

Veste B	68	70	73	76	76	79	84	89	94	"
---------	----	----	----	----	----	----	----	----	----	---

Jupe C,D	130	132	135	137	147	150	155	160	165	"
----------	-----	-----	-----	-----	-----	-----	-----	-----	-----	---

Longueur finie – dos, votre nuque à l'ourlet	30	32	33	34	39	39	41	42	43	cm
--	----	----	----	----	----	----	----	----	----	----

Haut A	28	29	30	32	38	39	40	41	43	"
--------	----	----	----	----	----	----	----	----	----	---

Veste B	28	29	30	32	38	39	40	41	43	"
---------	----	----	----	----	----	----	----	----	----	---

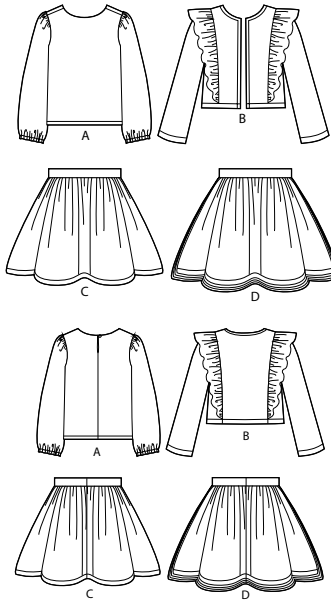
Longueur finie – dos, taille à l'ourlet	31	33	35	37	36	38	41	43	45	cm
---	----	----	----	----	----	----	----	----	----	----

Jupe C,D	31	33	35	37	36	38	41	43	45	cm
----------	----	----	----	----	----	----	----	----	----	----

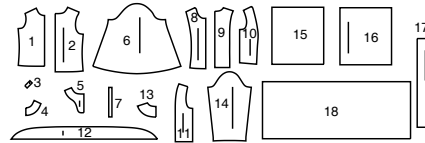
Top A	12	12½	13	13½	15¼	15½	16	16½	17	Ins.
-------	----	-----	----	-----	-----	-----	----	-----	----	------

Simplicity

Thank you for purchasing this Simplicity pattern.
We made every effort to provide you with a high quality product.



18 PIECES



- 1 Front-A
- 2 Back-A
- 3 Loop-A
- 4 Front Facing-A
- 5 Back Facing-A
- 6 Sleeve-A
- 7 Elastic Guide for Sleeve-A
- 8 Front-B
- 9 Back-B
- 10 Side Front-B
- 11 Side Back-B
- 12 Ruffle-B
- 13 Back Facing-B
- 14 Sleeve-B
- 15 Front-C,D
- 16 Back-C,D
- 17 Waistband-C,D
- 18 Front and Back Overlay-D

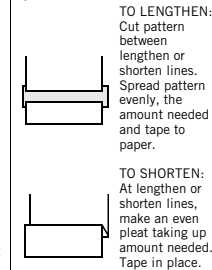
General Directions

The Pattern

- SYMBOLS**
- ↔ GRAIN LINE Place on straight grain of fabric parallel to selvage
 - ⇄ PLACE SOLID LINE on fold of fabric.
 - CENTER FRONT OR BACK of garment.
 - ▽▽ NOTCHES
 - DOTS
 - CUTTING LINE
 - == LENGTHEN OR SHORTEN LINES

SEAM ALLOWANCE: 5/8" (1.5cm) unless otherwise stated is included but not printed on MULTI-SIZE PATTERNS. Mark your size with colored felt tip pen. See chart on tissue for how to use MULTI-SIZE PATTERNS.

ADJUST IF NEEDED
Make adjustments before placing pattern on fabric.



When lengthen or shorten lines are not given, make adjustments at lower edge of pattern.

Cutting/Marking

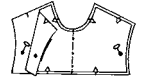
BEFORE CUTTING:
PRESS pattern pieces with a warm dry iron. PRE-SHRINK fabric by pre-washing washables or steam-pressing non-washables.

CIRCLE your cutting layout.
PIN pattern to fabric as shown in Cutting Layouts.

- FOR DOUBLE THICKNESS: Fold fabric with RIGHT sides together.
- FOR SINGLE THICKNESS: Place fabric RIGHT side up.
- FOR PILE, SHADED OR ONE WAY DESIGN FABRICS: Use "with nap" layouts

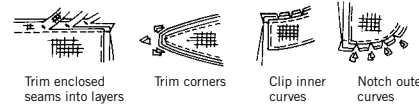
AFTER CUTTING:
Transfer markings to WRONG side of fabric before removing pattern. Use pin and chalk method or dressmaker's tracing paper and wheel.

- To Quick Mark:**
- Snip edge of fabric to mark notches, ends of fold lines and center lines.
 - Pin mark dots.



Sewing

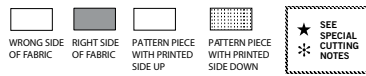
- SEW garment following Sewing Directions.
- PIN or machine-baste seams matching notches.
- STITCH 5/8" (1.5 cm) seams unless otherwise stated.
- PRESS seams open unless otherwise indicated clipping when necessary so seams will lie flat.
- TRIM seams to reduce bulk, as shown below.



SPECIAL CUTTING NOTES

- ★ If layout shows a piece extending past fold, cut out all pieces except piece that extends. Open out fabric to single thickness. Cut extending piece on RIGHT side of fabric in position shown.
- ✳ Mark small arrows along both selvages indicating direction of nap or design. Fold fabric crosswise with RIGHT sides together, and cut along fold (a). Turn one fabric layer around so arrows on both layers go in the same direction. Place RIGHT sides together (b).

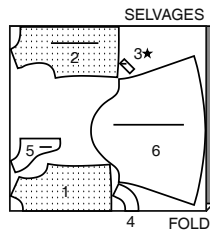
Cutting Layouts



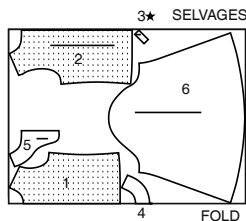
POSITION OF PATTERN PIECES MAY VARY SLIGHTLY ACCORDING TO YOUR PATTERN SIZE

TOP A
USE PIECES 1 2 3 4 5 6

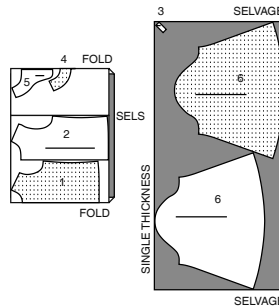
60" (150CM) WITH NAP
SIZES 3 4 5 6



60" (150CM) WITH NAP
SIZES 7 8 10 12

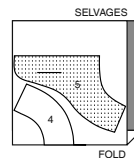


60" (150CM) WITH NAP
SIZES 14



INTERFACING A
USE PIECES 4 5

20" (51CM) ALL SIZES

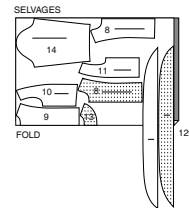


JACKET B

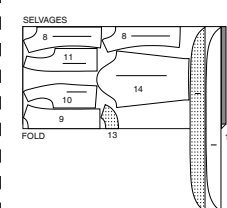
USE PIECES 8 9 10 11 12 13 14

NOTE: For synthetic suede like fabrics alter tissue pattern to fit exactly as mistakes in stitching will show. Place pattern on fabric following cutting layouts. To hold pattern when cutting, use pins within seam allowance or use masking tape. Cut with sharp shears, transfer all markings with tailor's chalk, do not use a tracing wheel it will make holes in fabric.

54" (138CM) WITH NAP
SIZES 3 4 5 6

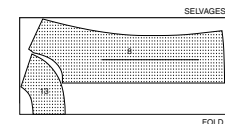


54" (138CM) WITH NAP
SIZES 7 8 10 12 14



INTERFACING B
USE PIECES 8 13

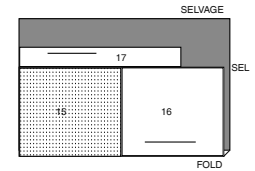
20" (51CM) ALL SIZES



SKIRT C D

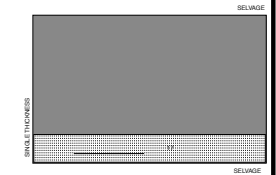
USE PIECES 15 16 17

45" (115CM) WITH NAP
ALL SIZES



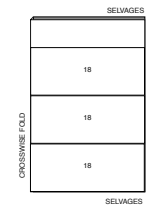
INTERFACING C, D
USE PIECE 17

20" (51CM) ALL SIZES



CONTRAST TULLE OVERLAY D
USE PIECE 18

72" (183CM) WITH NAP
ALL SIZES



Sewing Directions

FABRIC KEY



SIMPLY THE BEST SEWING TECHNIQUES...

FOR KNITS

- Use a ball point or stretch needle.
- Decrease pressure on presser foot for heavy sweater knits; increase pressure for lingerie knits.
- Stretch knits need seams that are supple enough to "give" with the fabric. You can sew them with straight stitches (stretching the fabric slightly as you sew), narrow zig-zag stitches or one of the stretch stitches built into many conventional machines, or on your serger.
- Some knits require very little or no pressing while sewing. Use the appropriate temperature setting. Press lightly or use steam.
- If desired, hems can be stitched in place 1/4" (6mm) from raw edge.

FOR TULLE

- Place tissue paper on the underside of tulle when machine-stitching. Tear tissue paper away when done stitching.
- Press with steam or with a pressing cloth, using a low temperature setting to avoid melting. Test first.

SEWING TUTORIALS



Build your skills viewing short, easy-to-follow videos at simplicity.com/sewingtutorials



STNTHETIC LEATHER-LIKE FABRICS

- Pin or baste seams within the seam allowance since pin holes remain in fabric.
- Basting tape, binder or seam clips are other ideal methods to hold seam allowances together and avoid slipping of fabric.
- For hand-basting or sewing, use a leather needle and thimble.
- For machine-sewing, use medium but balanced tension and 10 to 12 stitches per inch (2.5cm) ..size 11/12 leather needle and 100% polyester or polyester core thread.
- For top-stitching, use a size 14 or 16 needle and silk, polyester buttonhole twist or top-stitching thread.
- When feeding fabric through machine, hold it "taut" in front of and behind the machine needle as you sew. DO NOT stretch.
- Press seams open with fingers or press on WRONG side with iron set at a low temperature setting and a press cloth. DO NOT USE A STEAM IRON. WE DO NOT RECOMMEND PRESSING ON RIGHT SIDE OF FABRIC. When pressing synthetic leather or vinyl, we recommend covering your ironing board and garment with brown paper to prevent melting.
- Another method for holding seams or hems down is use rubber cement and flatten with a mallet or a roller
- Always test on fashion fabric scraps.
- Some fabrics may be stubborn to feed through your sewing machine. Place strips of tissue paper or tear away stabilizer over seams and edges of garment to be stitched. Tear away paper after stitching. This method will give you even stitches without any puckers. Or use a non-stick presser, roller or walking foot.
- Since cut edges do not ravel, inner edges of seams, facings, and hems can be left raw.

Sewing methods in **BOLD TYPE** have Sewing Tutorial Video available. Scan QR CODE to watch videos:

EASE/GATHER - See **Gathering: "sewing two row gathers"** video.

EDGE STITCH - See **Machine Stitches: "how to edgestitch"** video.

GATHER - See **Gathering: "sewing gathering with yarn"** video.

INVISIBLE ZIPPER - See **Zipper: "sewing an invisible zipper"** video.

SLEEVE - See **Armholes/Sleeves: "sewing a set in sleeve"** video.

STAYSTITCH - See **Machine Stitches: "how to do stay-stitching"** video.

STITCH IN THE DITCH - See **Machine Stitches: "how to stitch in the ditch"** video.

TACK - See **Hand Stitches: "how to tack"** video.

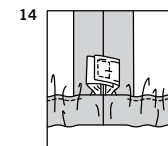
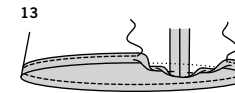
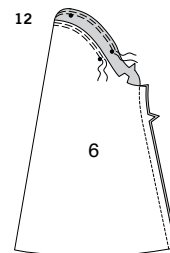
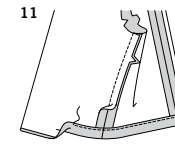
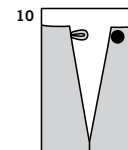
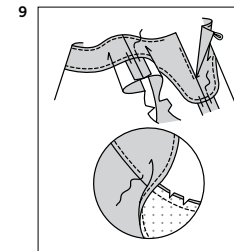
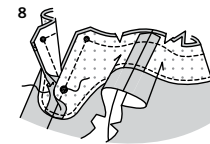
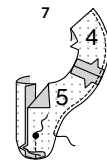
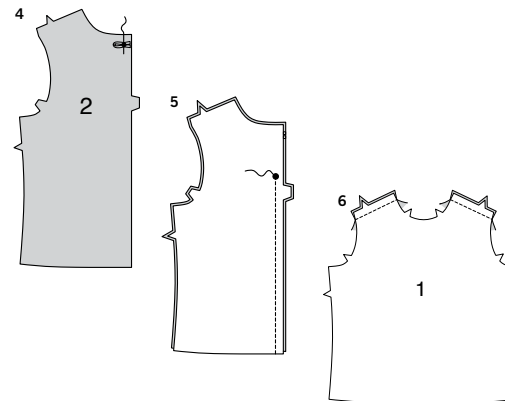
TRIM - See **How to Sew: Trim, Clip, and Layer Seams"** video.

TOPSTITCH - See **Machine Stitches: "how to topstitch"** video.

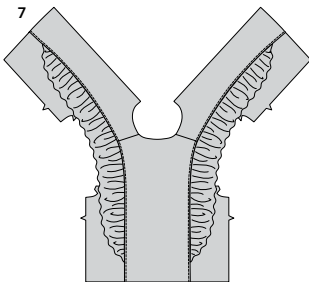
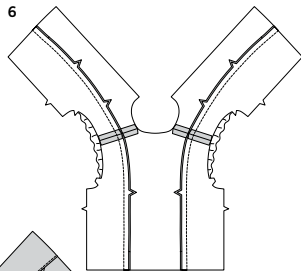
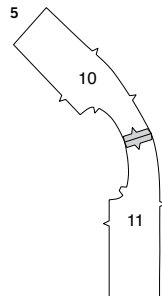
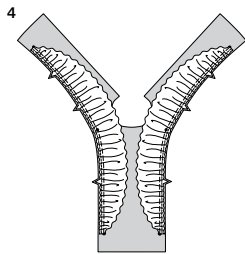
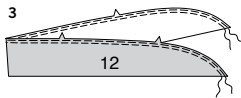
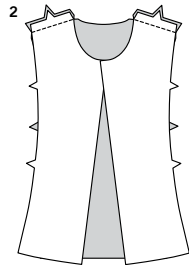
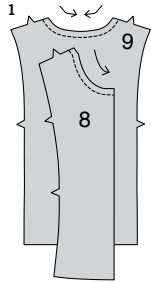
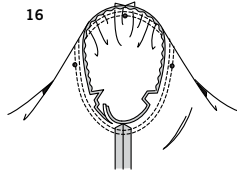
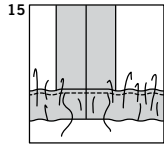
UNDERSTITCH - See **Machine Stitches: "how to understitch"** video.

TOP A

1. Fold LOOP (3) in half, lengthwise, with RIGHT sides together. Stitch a scant 1/4" (6mm) from fold edge, stretching loop while stitching.
2. With a needle, attach a strong thread to one end of loop. Draw needle eye forward, through fold, turning loop RIGHT side out.
3. To keep ends of loop together, hand-tack inner edges within seam allowance.



4. On OUTSIDE, pin loop to LEFT BACK (2) at small dot, having raw edges even and clearing seam allowance on neck edge. Baste.
5. Stitch center back seam of back sections below large dot, back-stitching at large dot to reinforce seam.
6. Stitch FRONT (1) to back at shoulders.
7. Apply fusible interfacing to WRONG side of FRONT FACING (4) and BACK FACING (5) sections, following manufacturer's directions. Stitch center back seam of back facing sections below large dot, back-stitching at large dot. Stitch shoulder seams of facing sections. Stitch 1/4" (6mm) from outer unnotched edge. If you prefer, zigzag OR overlock/serge over the edge.
8. With RIGHT sides together, pin facing to neck and back opening edges, matching centers, shoulder seams, small and large dots. Stitch back and neck edges between large dots, breaking and reinforcing stitches at large dots. **TRIM** seam and corners; clip curves.
9. **UNDERSTITCH** by pressing facing and seam away from top, stitching through facing and seam allowances close to seam as far as possible. Turn facing to INSIDE; press. To keep the facing from rolling to OUTSIDE, secure it at seam allowances by **TACKING** it by hand.
10. On OUTSIDE, sew button opposite loop.
11. Stitch side seams of top. Press up 1-1/4" (3.2cm) hem on lower edge. Press under 1/4" (6mm) on raw edge. Stitch close to inner pressed edge.
12. To **GATHER** top of SLEEVE (6) between outer small dots, using long stitches, stitch along seam line and 1/4" (6mm) away. Stitch underarm seam.
13. Press 3/4" (2cm) on lower edge of sleeve to INSIDE. Press under 1/4" (6mm) on raw edge, forming casing. Stitch close to inner edge of casing, leaving an opening to insert elastic.
14. For each sleeve, cut one piece of elastic, each the length of ELASTIC GUIDE FOR SLEEVE (7). Insert elastic through casing. Overlap ends and stitch securely together.



- 15.** Stitch opening closed. Distribute fullness evenly.
TIP: To secure elastic so it won't twist in wearing, stitch through all thicknesses of casing in the groove of seam.
- 16.** Turn **SLEEVE RIGHT** side out. Hold top **WRONG** side out with armhole toward you. With **RIGHT** sides together, pin sleeve to armhole edge with center small dot at shoulder seam, matching underarm seams, notches, and remaining small dots. Pull up gathering stitches to fit, distributing fullness evenly. Baste. Stitch. Stitch again 1/8" (3mm) from first stitching within seam allowance. Trim seam below notches close to stitching. Press only the seam allowance, shrinking out fullness. Turn seam toward sleeve.

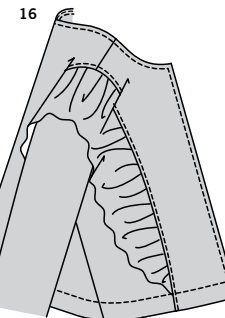
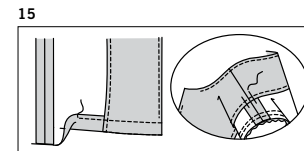
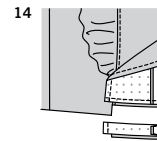
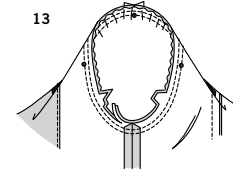
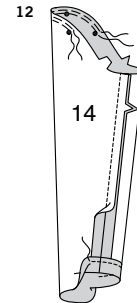
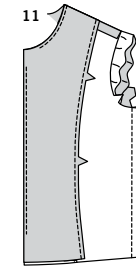
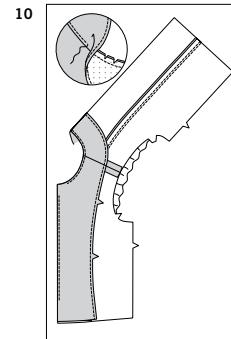
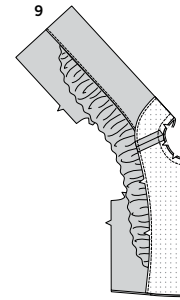
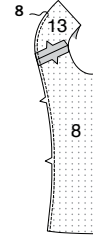
JACKET B

- 1. STAYSTITCH** neck edge of **FRONT (8)** and **BACK (9)** sections 1/2" (1.5cm) from raw edge in direction of arrows. Staystitching will not be shown in the following illustrations.
TIP: If your faux leather is stable, you can omit staystitching.

NOTE: You have cut out four front sections. Two of these will be used for the jacket and will be stitched to the side front sections. The remaining sections will be interfaced and used as front facings.

- 2.** Stitch **FRONT (8)** to **BACK (9)** at shoulders.
- 3.** To **GATHER** curved edge of **RUFFLE (12)** using long stitches, stitch a scant 5/8" (1.5cm) from raw edge and 1/4" (6mm) away. The straight edge is left raw.
TIP: Test gathering stitches on a remnant, loosening needle tension if necessary.
- 4.** With **RIGHT** sides together, pin ruffle to side edge of front and back, placing inner small dot at shoulder seam and ends at large dots. Pull up gathering stitches to fit, distributing fullness evenly. Baste within seam allowance or use clips as suggested in simply the best techniques for synthetic leather-like fabrics.
- 5.** Stitch **SIDE FRONT (10)** to **SIDE BACK (11)** at shoulders.
- 6.** Pin side front and back to corresponding front and back (over ruffle), matching notches. Stitch. Press seam toward centers front and back.

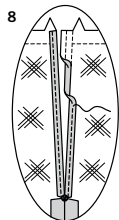
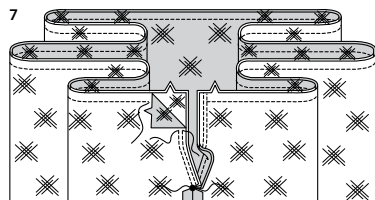
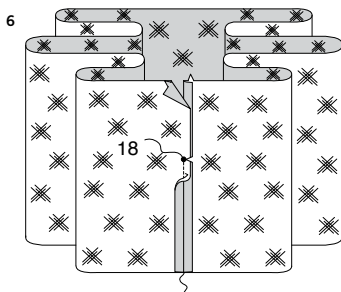
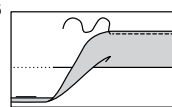
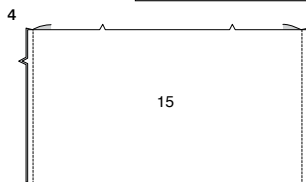
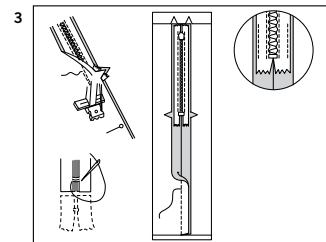
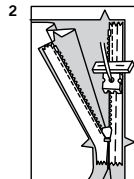
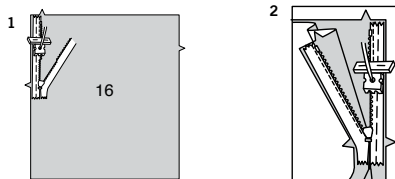
- 7.** On **OUTSIDE**, **EDGESTITCH** front and back sections close to seams, as shown.



- 8.** Apply interfacing to **WRONG** side of **FRONT (8)** **FACING** and **BACK FACING (13)** sections, following manufacturer's directions. Stitch shoulder seams of facing sections. Stitch 1/4" (6mm) from notched edge, as shown.
- 9.** With **RIGHT** sides together and raw edges even, pin facing to front and neck edges of jacket, matching centers back and shoulder seams. Stitch front and neck edges.
TRIM seam and corners; clip curves.
- 10. UNDERSTITCH** by pressing facing and seam away from jacket, stitching through facing and seam allowances close to seam to within 3" (7.5m) of lower edges, and as far as possible at upper corners. Turn facing to **INSIDE**; press neck edge.
- 11.** Stitch back to fronts at sides.
- 12.** To **EASE** top of **SLEEVE (14)** between outer small dots, using a long machine-stitch, stitch a scant 5/8" (1.5cm) from raw edge and 1/4" (6mm) away within seam allowance. Stitch underarm seam. Turn up 1-1/4" (3.2cm) hem allowance on lower edge. Stitch 1/4" (6mm) from inner raw edge.
- 13.** Turn **SLEEVE RIGHT** side out. Hold jacket **WRONG** side out with armhole toward you. With **RIGHT** sides together, pin sleeve to armhole edge with center small dot at shoulder seam, matching underarm seams, notches, and remaining small dots. Pull up ease stitches to fit. Baste. Stitch. Stitch again 1/8" (3mm) from first stitching. Trim seam below notches close to stitching. Press only the seam allowance, shrinking out fullness if possible. Turn seam toward sleeve.
- 14.** Turn facing to **OUTSIDE** at lower edges. Stitch across facing exactly 1-1/4" (3.2cm) from lower edge. Trim facing close to stitching. Trim jacket to within 5/8" (1.5cm) of inner edge of facing.
- 15.** Turn facing to **INSIDE**; press, pressing up 1-1/4" (3.2cm) hem allowance. Stitch hem in place 1/4" (6mm) from inner raw edge and 1" (2.5cm) from lower edges of facing, as shown. Secure facing to shoulder seam allowances by **TACKING** it by hand.
- 16.** On **OUTSIDE**, **TOPSTITCH** front and neck edges 1/4" (6mm) from finished edges.

S3044

4 of 4



SKIRT C, D

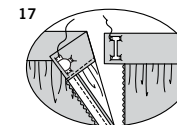
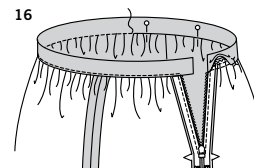
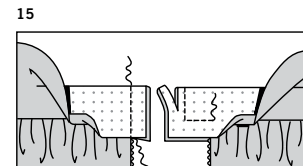
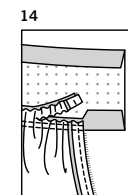
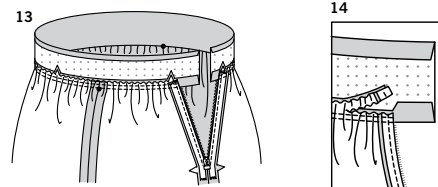
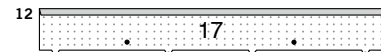
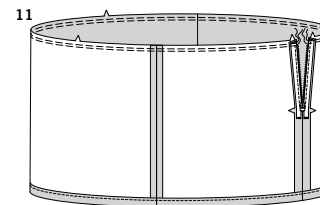
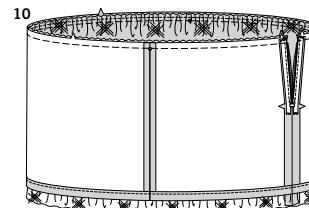
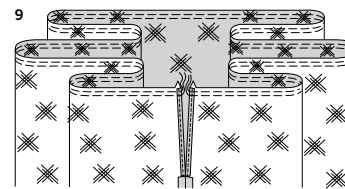
NOTE: The first view mentioned will be illustrated unless otherwise indicated.

Stitch the invisible zipper using an invisible zipper foot. If the zipper is longer than the zipper opening, it will be adjusted after the zipper is inserted. For a How-to video, see **ZIPPER: "sewing an invisible zipper"**.

- Apply zipper to **BACK (16)** sections, as follows:
Open zipper and press tape using a cool iron. On **OUTSIDE**, pin **RIGHT** side of zipper face down on **RIGHT** side of **BACK** zipper opening. Have the coil along the seam line, the tape within the seam allowance and the top stop 3/4" (2cm) from upper edge, as shown. Hand-baste along center of tape.
Position zipper foot at top of zipper with **RIGHT** groove of foot over coil. Stitch along tape to the notch. Back-stitch to reinforce.
- Pin remaining half of the zipper to the **LEFT** side of the zipper opening in same manner. Make sure upper and lower edges of back are even. Hand-baste along center of tape. Position zipper foot at the top of the zipper with **LEFT** groove over the coil. Stitch along tape to notch. Back-stitch to reinforce.
- Close zipper and check that it is invisible from the **OUTSIDE**. Pull free ends of zipper tape away from seam allowance. Pin remaining center back seam below zipper. Position zipper foot all the way to the **LEFT** so the needle goes down through the outer notch of the foot. Start stitching seam 1/4" (6mm) above lowest stitch and slightly to the **LEFT**. Stitch seam for about 3" (7.5cm). Stitch remainder of seam using your regular presser foot. If the zipper is longer than the opening, using a strong thread, hand-sew a few small stitches across ends of coils at end of opening. Trim away lower end of zipper tape to within 5/8" (1.5cm) of hand-stitches. If you prefer, open out each seam allowance at end of zipper and stitch tape to seam allowance.
- Stitch **FRONT (15)** to back at sides.
- Press up 1-1/4" (3.2cm), hem on lower edge of skirt. Press under 1/4" (6mm) on inner raw edge. Stitch close to inner pressed edge.

CONTINUE AS FOLLOWS FOR VIEW D

- With **RIGHT** sides together, stitch center back seam of each **FRONT AND BACK OVERLAY (18)** section below large dot, back-stitching at each end to reinforce seam. Clip seam allowances to stitching at large dot, being careful not to clip through stitching.
- Layer overlay sections one on top of the other, having **RIGHT** sides facing up and raw edges even, matching centers, notches, and large dots. Pin raw edges together above clips.
Stitch upper raw edges together a scant 5/8" (1.5cm) from raw edge. Stitch back opening edges along seamline, breaking and reinforcing stitches at clips. Stitch back edges 1/4" (6mm) away from first stitching within seam allowance.
Lightly press 5/8" (1.5cm) hem allowance on back opening edges of overlay to **WRONG** side above clip.
- Tuck under back openings edge along 1/4" (6mm) stitching above clips; lightly press. Stitch hem in place, squaring stitches to large dot.



- To **GATHER** upper edge between back notches, using a long machine-stitch, stitch along previous stitching and 1/4" (6mm) away **INSIDE** seam line.
- Open zipper.
Pin **WRONG** side of overlay to **RIGHT** side of skirt along upper edges, matching notches, centers front and back, and having raw edges even. Pull up overlay gathering stitches fit. Baste. This entire section will now be referred to as the skirt.
The overlay will not be shown again in the following views.

CONTINUE AS FOLLOWS FOR VIEWS C, D

- To **GATHER** upper edge of skirt between notches, using a long machine-stitch, stitch along seam line and 1/4" (6mm) **INSIDE** seam line.
- Apply interfacing to **WRONG** side of waistband (17), following manufacturer's directions.
Press under 1/2" (1.5cm) on long unnotched edge.
- With **RIGHT** sides together, pin waistband to skirt, matching centers and notches, placing small dots at side seams.
Pull up gathering stitches to fit; baste.
Stitch.
- Trim seam to 1/4" (6mm). **DO NOT** trim seam allowance on **RIGHT** back end of waistband extension. Press seam toward band, pressing band out.
- Fold band with **RIGHT** sides together. Stitch across **LEFT** end of band.
Turn **RIGHT** end of waistband seam allowance down and open out pressed edge so that raw edges are even. Stitch ends along seam line, being careful not to catch in zipper teeth, as shown.
TRIM seams and corners.
- Turn ends of waistband **RIGHT** side out. Press.
On **INSIDE**, pin finished edge of waistband 1/8" (3mm) over seam, placing pins on **OUTSIDE**.
On **OUTSIDE**, **STITCH IN THE DITCH** or "groove" of the waistband seam, catching in finished edge on **INSIDE**.
- Lap ends of band, matching centers back; fasten with hook closure, as show.



Congrats!

You've completed your sewing adventure

**SHARE
YOUR** LOOK



Post your pattern and tag us
[@simplicity_creative_group](#) and [#simplicitypatterns](#)
for a chance to be featured on our social media.

Look for more PDF patterns at [simplicity.com](https://www.simplicity.com)

Have a question or need help with your sewing project call us at
1-888-588-2700



Simplicity ©2024 a division of IG Design Group Americas Inc. • Atlanta, GA 30342 USA www.thedesigngroup.com • All Rights Reserved. www.simplicity.com • Made in the U.S.A. Fabriqué aux États-Unis.

To be used for individual private home use only and not for commercial or manufacturing purposes. • A usage privé seulement et non à des fins commerciales ou de production en série. • Para uso privado solamente, no se puede utilizar con propósitos de comercialización o de producción en serie.