

S3043

Simplicity



easy-to-sew

Easy

CHILDREN'S AND GIRLS' PONCHOS

Suggested Fabrics: A: Flannel/Sherpa, Suede/Sherpa. B,C,D: Boiled Wool, Fleece.

Interfacing: Lightweight Fusible.

Notions: A,B,C,D: 1" (2.5cm) buttons: Six for A,B,C, Two for D. Also for D: Four toggle closures.

Sizes	3	4	5	6	7	8	10	12	14
BODY MEASUREMENTS: Select pattern size based on body measurements									
Chest	22	23	24	25	26	27	28½	30	32 Ins.
Waist	20½	21	21½	22	23	23½	24½	25½	26½ "
Hip	—	24	25	26	27	28	30	32	34 "
Back-neck to waist	9	9½	10	10½	11½	12	12¾	13½	14¼ "
Approx. Height	38	41	44	47	50	52	56	58½	61 "

Poncho A,B 54** 1¼ 1¼ 1¼ 1¼ 1¼ 2 2¼ 2¼ 2¼ Yds.
Interfacing - 20" - 1¼ yd.

Contrast B (Pockets) - 60** - ¾ yd.

Poncho C,D 60** 1¼ 1¼ 1¼ 1¼ 1¼ 1¾ 1¾ 1¼ 2 Yds.
Interfacing - 20" - ¾ yd.

FINISHED GARMENT MEASUREMENTS (Includes Design and Wearing Ease)

Finished back length from base of neck

Poncho A,B,C,D	17	17½	18¼	19	21¼	21¾	22¾	23¾	24¾ Ins.
-----------------------	----	-----	-----	----	-----	-----	-----	-----	----------

*with nap **without nap

Facile

PONCHOS POUR ENFANTS ET FILLETES

Tissus Conseillés: A: Flanelle/Sherpa, Suède/Sherpa. B,C,D: Laine bouillie, Molleton.

Entoilage: Thermocollant léger.

Mercerie: A,B,C,D: Boutons de 2.5cm: 6 pour A,B,C, 2 pour D. Aussi pour D: 4 fermetures à bascule.

Tailles	3	4	5	6	7	8	10	12	14
MESURES DU CORPS: Choisissez la taille du patron basée sur les mesures du corps									
Poitrine	56	58	61	64	66	69	73	76	81 cm
Taille	52	53	55	56	58	60	62	65	67 "
Hanches	—	61	64	66	69	71	76	81	87 "
Dos du cou à la taille	23	24	25.5	27	29.5	31	32.5	34.5	36 "
Taille approx.	97	104	112	119	127	132	142	149	155 "

Poncho A,B 140cm* 1.1 1.1 1.1 1.3 1.7 1.8 1.9 1.9 2.1 m
Entoilage - 51cm - 0.9m

Contraste B (Poches) - 150cm* - 0.3m

Poncho C,D 150cm* 1.1 1.1 1.3 1.4 1.5 1.6 1.6 1.7 1.8 m
Entoilage - 51cm - 0.8m

MESURES DES VÊTEMENTS FINI (Motif et aisance de port compris)

Longueur finie – dos, votre nuque à l'ourlet

Poncho A,B,C,D	43	44	46	48	54	55	58	60	63 cm
-----------------------	----	----	----	----	----	----	----	----	-------

*avec sens **sans sens



A



B



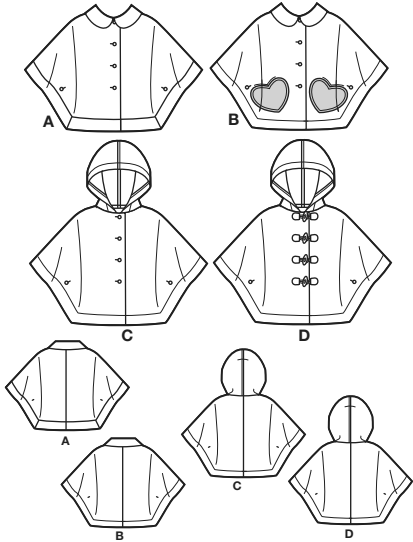
C



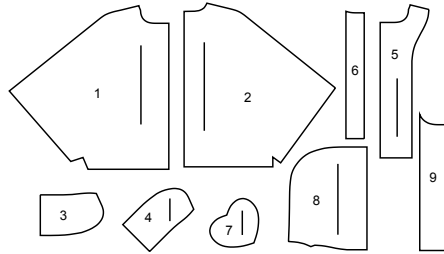
D

Simplicity®

Thank you for purchasing this Simplicity pattern. We made every effort to provide you with a high quality product.



9 PIECES



- 1 Front-A,B,C,D
- 2 Back-A,B,C,D
- 3 Upper Collar-A,B
- 4 Under Collar-A,B
- 5 Front Facing-A,B,C,D
- 6 Guide for Buttonholes-A,B,C
- 7 Pocket-B
- 8 Hood-C,D
- 9 Guide for Buttonholes-D

General Directions

The Pattern

- SYMBOLS**
- ↔ GRAIN LINE Place on straight grain of fabric parallel to selvage
 - ⇄ PLACE SOLID LINE on fold of fabric.
 - CENTER FRONT OR BACK of garment.
 - ∇ NOTCHES
 - ○ DOTS
 - CUTTING LINE
 - == LENGTHEN OR SHORTEN LINES

SEAM ALLOWANCE: 5/8" (1.5cm) unless otherwise stated is included but not printed on MULTI-SIZE PATTERNS. Mark your size with colored felt tip pen. See chart on tissue for how to use MULTI-SIZE PATTERNS.

ADJUST IF NEEDED

Make adjustments before placing pattern on fabric.

TO LENGTHEN: Cut pattern between lengthen or shorten lines. Spread pattern evenly, the amount needed and tape to paper.

TO SHORTEN: At lengthen or shorten lines, make an even pleat taking up amount needed. Tape in place.

When lengthen or shorten lines are not given, make adjustments at lower edge of pattern.

Cutting/Marking

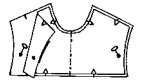
BEFORE CUTTING: PRESS pattern pieces with a warm dry iron. PRE-SHRINK fabric by pre-washing washables or steam-pressing non-washables. CIRCLE your cutting layout. PIN pattern to fabric as shown in Cutting Layouts.

- FOR DOUBLE THICKNESS: Fold fabric with RIGHT sides together.
- FOR SINGLE THICKNESS: Place fabric RIGHT side up.
- FOR PILE, SHADED OR ONE WAY DESIGN FABRICS: Use "with nap" layouts

AFTER CUTTING: Transfer markings to WRONG side of fabric before removing pattern. Use pin and chalk method or dressmaker's tracing paper and wheel.

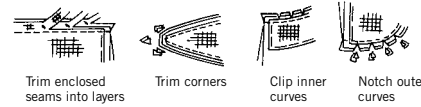
To Quick Mark:

- Snip edge of fabric to mark notches, ends of fold lines and center lines.
- Pin mark dots.



Sewing

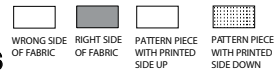
- SEW garment following Sewing Directions.
- PIN or machine-baste seams matching notches.
- STITCH 5/8" (1.5 cm) seams unless otherwise stated.
- PRESS seams open unless otherwise indicated clipping when necessary so seams will lie flat.
- TRIM seams to reduce bulk, as shown below.



SPECIAL CUTTING NOTES

- ★ If layout shows a piece extending past fold, cut out all pieces except piece that extends. Open out fabric to single thickness. Cut extending piece on RIGHT side of fabric in position shown.
- ✱ Mark small arrows along both selvages indicating direction of nap or design. Fold fabric crosswise with RIGHT sides together, and cut along fold (a). Turn one fabric layer around so arrows on both layers go in the same direction. Place RIGHT sides together (b).

Cutting Layouts

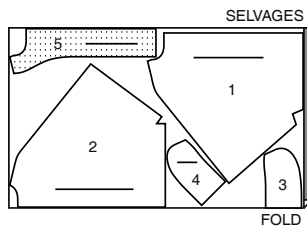


POSITION OF PATTERN PIECES MAY VARY SLIGHTLY ACCORDING TO YOUR PATTERN SIZE

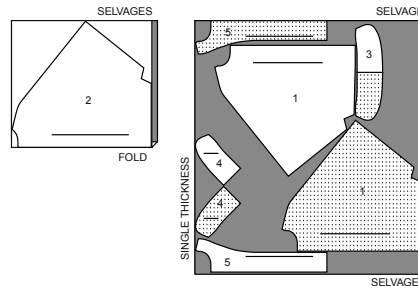
PONCHO A

USE PIECES 1 2 3 4 5

54" (138CM) WITH NAP SIZES 3 4 5 6



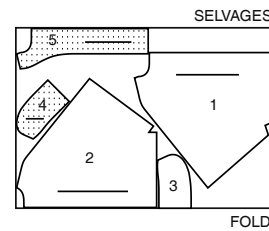
54" (138CM) WITH NAP SIZES 7 8 10 12 14



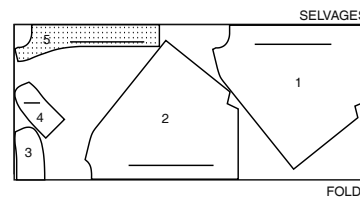
PONCHO B

USE PIECES 1 2 3 4 5

60" (150CM) WITH NAP SIZES 3 4 5 6



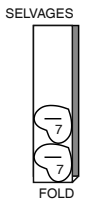
60" (150CM) WITH NAP SIZES 7 8 10 12 14



CONTRAST B POCKETS

USE PIECE 7

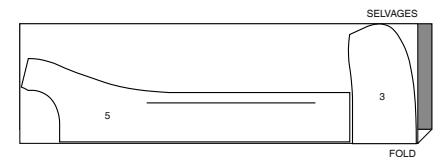
60" (150CM) WITH NAP ALL SIZES



INTERFACING A, B

USE PIECES 3 5

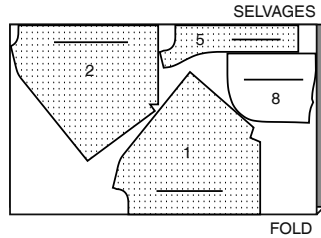
20" (51CM) ALL SIZES



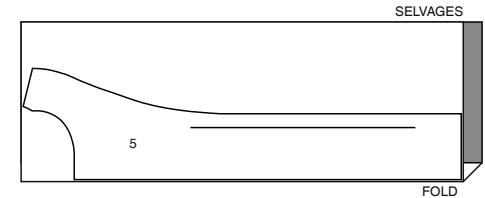
CUTTING LAYOUTS CONTINUED ON PAGE 2

PONCHO C, D

USE PIECES 1 2 5 8

60" (150CM)
WITH NAP
SIZES 3 4 5 660" (150CM)
WITH NAP
SIZES 7 8 10 12 14**INTERFACING C, D**

USE PIECE 5

20" (51CM)
ALL SIZES

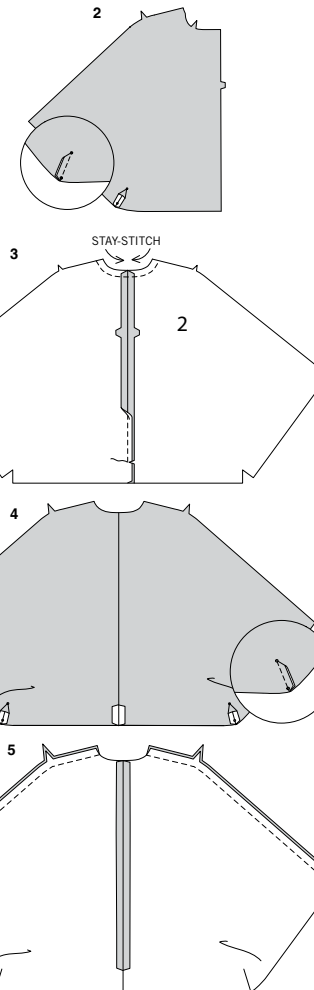
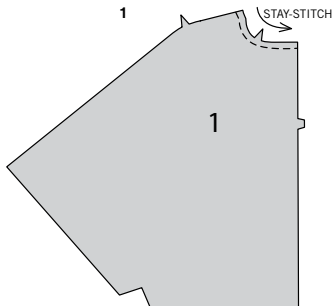
SEWING TUTORIALS

Build your skills viewing short, easy-to-follow videos at
simplicity.com/sewingtutorials**Sewing Directions****FABRIC KEY**Read **General Directions** on page 1 before you begin.Sewing methods in **BOLD TYPE** have Sewing Tutorial Video available.
Scan **QR CODE** to watch videos:**DART** - See **Darts**: "sewing flat dart" video.**FINISH** - See **Seams**: "how to finish seam allowances" video.**REINFORCE** - See **Machine Stitches**: "how to reinforce" video.**SLIPSTITCH** - Slide needle through a folded edge, then pick up a thread of underneath fabric.**STAYSTITCH** - See **Machine Stitches**: "how to staystitching" video.**TACK** - See **Hand-Stitching**: "how to tack" video.**TOPSTITCH** - See **Machine Stitches**: "how to topstitch" video.**TRIM** - See **How to Sew**: **Trim, Clip, and Layer Seams** video.**UNDERSTITCH** - See **Machine Stitches**: "how to understitch" video.**SIMPLY THE BEST TECHNIQUES FOR SEWING FLEECE AND SHERPA SUEDE**

- Since cut edges do not ravel, edges of seams and hems can be left raw.
- When pinning pieces together, use long pins...the kind with bead heads are best because short pins tend to get lost in the fleece.
- When stitching, try using a narrow zig-zag stitch, adjusting the width and length for the type of fleece you are using. Always test first on some scraps and keep for reference. Sew slowly and carefully the first time you stitch a seam as stitches are hard to remove.
- To prevent shoulder seams from stretching, pin center of straight seam binding or will tape along seam line on front shoulder edges, then stitch the shoulder seams.
- When sewing around shaped areas sew slowly being careful not to stretch the fleece as you feed fabric through your machine.

PATTERN PIECES WILL BE IDENTIFIED BY NUMBERS THE FIRST TIME THEY ARE USED.**STITCH SEAMS WITH RIGHT SIDES TOGETHER UNLESS OTHERWISE STATED.****PONCHO A****NOTE:** *Sherpa side will used as WRONG side of fabric, unless otherwise indicated.***FRONT AND BACK**

- 1. STAYSTITCH** neck edge of FRONT (1) sections, in direction of arrows.

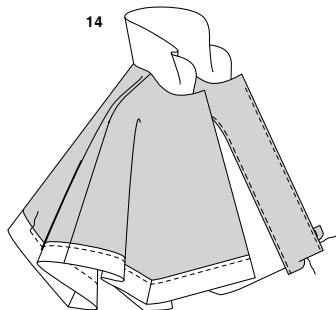
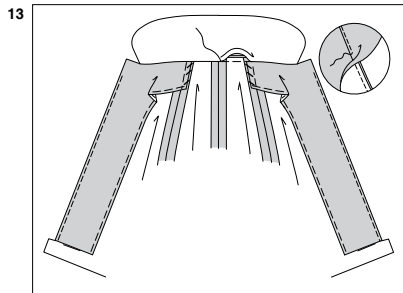
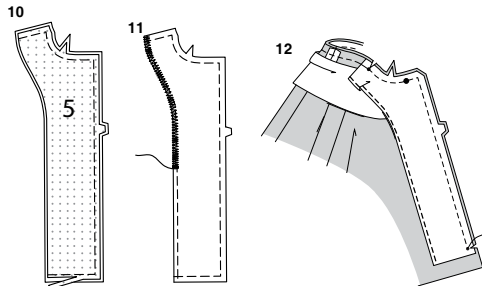
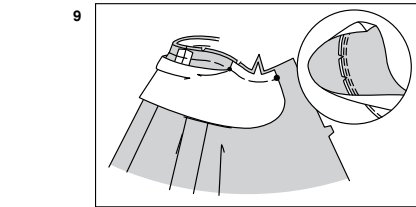
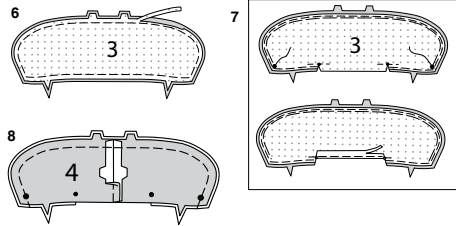


- To stitch dart seam in front, bring broken lines and raw edges **WRONG** sides together, matching small dots. Stitch dart seam from outer edge to point. Press seam open as far as possible.

- 3. STAYSTITCH** neck edge of each **BACK** (2) section in direction of arrows. With **RIGHT** sides together, stitch center back seam of back sections, ending stitching at foldline. Clip seams, as shown, being careful not to clip through stitching.

- With **WRONG** sides together, stitch remaining center back seam from foldline to lower edge. Make dart same as for front.

- Stitch back to front sections at overarm seams in same manner as center back seam.



COLLAR

- 6. Optional:** Pin interfacing to WRONG side of UPPER COLLAR (3).
Stitch $1/2"$ (1.3cm) from raw edges.
Trim interfacing close to stitching.
- 7.** To ease outer edge of UPPER COLLAR (3) between large dots, using long machine-stitches, stitch along seam line on curved edge between large dots.
REINFORCE neck edge of upper collar, using fine stitches, stitch along seam line through small dots, as shown.
Clip to small dots, being careful not to clip through stitching. Press under $5/8"$ (1.5cm) on raw edge between clips. Trim to $3/8"$ (1cm).
- 8.** Stitch UNDER COLLAR (4) sections at center back seam, matching notches.
Pin upper collar to under collar together, matching symbols. Adjust ease to fit. Baste. Stitch, leaving single notched edges open. **TRIM SEAM.**
- 9. UNDERSTITCH** under collar as far as possible. Turn collar; press.
On OUTSIDE, pin collar (under collar side) to neck edge, placing small dots at shoulder seams, matching centers back and large dots. Baste neck edge, keeping pressed edge free.

FACING

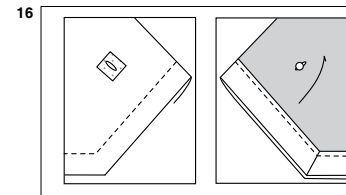
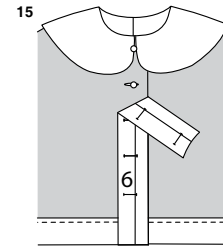
- 10. Optional:** Pin interfacing to WRONG side of FRONT FACING (5), having raw edges even.
Machine-stitch $1/2"$ (1.3cm) from all but long unnotched edge; trim interfacing close to stitching.
- 11.** Stitch facing $1/4"$ (1cm) from raw unnotched edge, as shown.
FINISH long unnotched edge by pinking, zigzagging, or overlocking raw edge.
Seam finishes will not be shown in the following illustrations.
- 12.** With RIGHT sides together and raw edges even, pin facing to front along outer edges (over ends of collar), matching notches, large dots and lower small dots.
Stitch neck and front edges above lower small dot, back-stitching to reinforce seam. Clip front edge of poncho only to small dot, being careful not to clip through stitching. Clip neck edge through all thicknesses at small dot.

TRIM SEAM.

- 13. UNDERSTITCH** front facing. Turn facing to INSIDE, turning back neck seam toward collar; press.
SLIPSTITCH pressed edge of upper collar over seam.
Pin shoulder edge of facing to back shoulder edge, having raw edges even; whip-stitch edges together, keeping poncho free.

FINISHING

- 14.** Turn in $5/8"$ (1.5cm) on lower edge of front facing.
To form hem, turn lower edge of poncho to OUTSIDE along foldline, turning in $5/8"$ (1.5cm) on front ends.
Baste $1/4"$ (6mm) from inner edge of hem.
SLIPSTITCH hem to poncho at front edge. **SLIPSTITCH** lower pressed edge of facing to poncho.
Stitch hem along basting, pivoting at corners and continue stitching through front facings to opening edges.



- 15.** To mark buttonholes on RIGHT front edge, place GUIDE FOR BUTTONHOLES (6) along finished edge of poncho, as shown. Transfer buttonhole markings to RIGHT front. Make buttonholes at markings.
Lap RIGHT front over LEFT, matching centers. Sew buttons under buttonholes.

- 16.** To reinforce buttonholes for sleeve openings, cut four rectangles of interfacing from your remnants, each one large enough to cover one buttonhole area.
Center interfacing over buttonhole marking on WRONG side of front; baste close to outer edges.
Make buttonhole at marking. Remove basting and trim interfacing close to buttonhole.
Sew buttons to WRONG side of back under buttonhole.

PONCHO B, C, D

NOTE: VIEW B will be illustrated unless otherwise indicated.

FRONT AND BACK

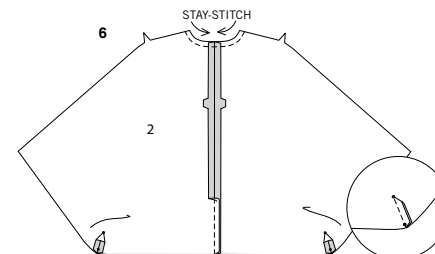
- 1. STAYSTITCH** neck edge of FRONT (1) sections, in direction of arrows.
- 2.** To stitch DART seam in front, bring broken lines and raw edges together, carefully matching small dots. Stitch dart seam from outer edge to point.
Press seam open as far as possible.

VIEW B:

- 3.** For each pocket, pin two POCKET (7) sections together, matching large dots and having raw edges even.
Stitch along seam and stitching line, leaving an opening on one side edge for turning.
To reinforce pocket, stitch again along previous stitching at inner and outer corners.
TRIM SEAM, leaving enough seam allowance for slipstitching opening closed.
Clip curves and to stitching at inner corner, being careful not to clip through stitching.
- 4.** Turn pocket RIGHT side out, turning under opening edges; lightly press.
SLIPSTITCH opening closed.
On OUTSIDE, **TOPSTITCH** $1/4"$ (6mm) from finished edge above large dots, back-stitching at each end.

- 5.** Pin pocket to front, matching large dots.
TOPSTITCH pocket below large dots, connecting to previous topstitching.

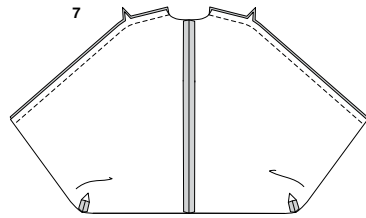
VIEWS B, C, D:



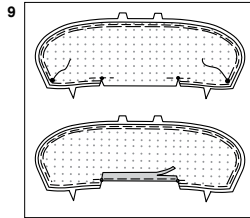
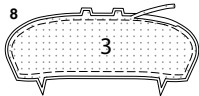
- 6. STAYSTITCH** neck edge of each BACK (2) section in direction of arrows.
Make DART same as for front.
Stitch center back seam of back sections.

S3043

4 of 4



7. Stitch back to front sections at overarm seams.

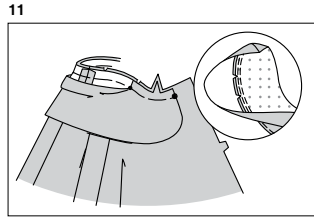
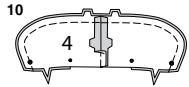


8. Pin interfacing to WRONG side of UPPER COLLAR (3). Stitch 1/2" (1.3cm) from raw edges. Trim interfacing close to stitching.

9. To ease outer edge of upper collar between large dots, using long machine-stitches, stitch along seam line on curved edge between large dots.

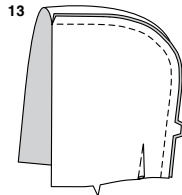
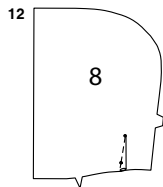
REINFORCE neck edge of upper collar, using fine stitches, stitch along seam line through small dots, as shown. Clip to small dots, being careful not to clip through stitching.

Press under 5/8" (1.5cm) on raw edge between clips. Trim to 3/8" (1cm).



10. Stitch UNDER COLLAR (4) sections at center back seam, matching notches. Pin upper collar to under collar, matching symbols. Adjust ease to fit. Baste. Stitch, leaving single notched edges open. **TRIM SEAM.**

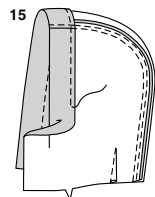
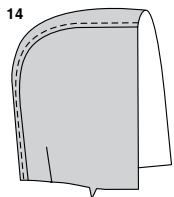
11. **UNDERSTITCH** under collar as far as possible. Turn collar; press. On OUTSIDE, pin collar (under collar side) to neck edge, placing small dots at shoulder seams, matching centers back and large dots. Baste neck edge, keeping pressed edge free.



HOOD C, D

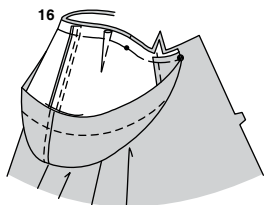
12. Stitch **DART** in HOOD (8), with RIGHT sides together.

13. Stitch hood sections together at center back seam, matching triple notches. Turn seam toward LEFT hood, as shown; lightly press.

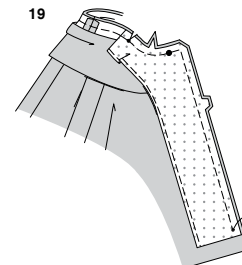
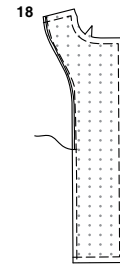
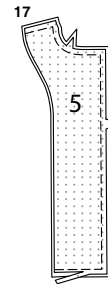


14. On OUTSIDE, topstitch LEFT hood 1/4" (6mm) from center back seam.

15. Turn front edge of hood to INSIDE along foldline; pin in place. Stitch front edge 1/4" (6mm) from inner raw edge.



16. On OUTSIDE, pin hood to neck edge of poncho, placing small dots at shoulder seams, matching large dots and centers back; baste.



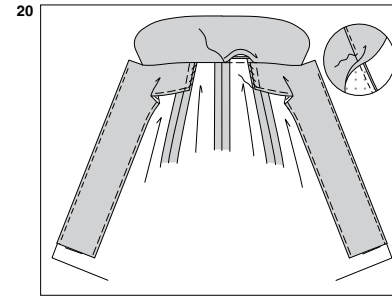
FACING B, C, D

17. Pin interfacing to WRONG side of FRONT FACING (5), having raw edges even. Machine-stitch 1/2" (1.3cm) from all but long unnotched edge; trim interfacing close to stitching.

18. Stitch facing 1/4" (1cm) from long unnotched edge, as shown. **FINISH** long unnotched edge by pinking, zigzagging, or overlocking raw edge. Seam finishes will not be shown in the following illustrations.

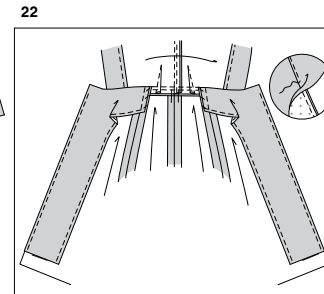
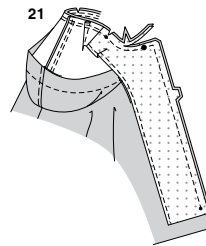
VIEW B:

19. With RIGHT sides together, pin facing to front along outer edges (over ends of collar), matching notches, large dots and lower small dots. Stitch neck and front edges, back-stitching to reinforce seam. Clip neck edge through all thicknesses at small dot. **TRIM** seam and corners; clip curves.



20. **UNDERSTITCH** facing as far as possible. Turn facing to INSIDE, turning back neck seam toward collar; press.

SLIPSTITCH pressed edge of upper collar over seam. Pin shoulder edge of facing to back shoulder edge, having raw edges even; whip-stitch edges together, keeping poncho free.



VIEWS C, D:

21. With RIGHT sides together and raw edge seven, pin facing to front along outer edges (over ends of hood), matching notches, large dots and lower small dots. Stitch neck and front edges, back-stitching to reinforce seam. Stitch neck edge again 1/4" (6mm) from first stitching. **TRIM SEAM** close to stitching and corners.

22. **UNDERSTITCH** facing as far as possible. Turn facing to INSIDE, turning out hood. Press.

Pin shoulder edge of facing to back shoulder edge, having raw edges even; whip-stitch edges together, keeping poncho free. **TACK** neck seam allowance to center back seam of poncho.

FINISHING

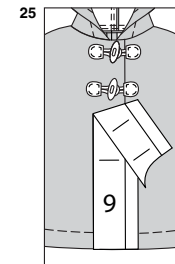
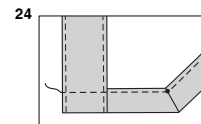
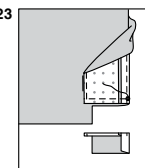
23. Turn facing to OUTSIDE at lower edge. Stitch along facing seam line to small dot, back-stitching at each end. Trim lower edge of facing close to stitching. Trim lower edge of front to within 5/8" (1.5cm) of inner edge.

24. Turn facing to INSIDE, turning up remaining raw edges along foldlines; lightly press. Baste. Stitch 1/4" (6mm) from inner edge of lower facing between opening edges, pivoting at small dots at corners.

25. **VIEWS B, C:** To prepare buttonholes and button use **GUIDE FOR BUTTONHOLES (6)** same as **VIEW A**. **VIEW D:** To mark position for toggles on LEFT and RIGHT opening edges, place **GUIDE FOR CLOSURE (9)** along finished edges of poncho, matching centers, as shown. Transfer placement lines to fronts.

Lap RIGHT front over LEFT, matching centers. Center and pin toggles in place over placement lines, as shown.

VIEWS B, C, D: Prepare and apply buttonholes and buttons for sleeve openings in same manner as **VIEW A**.





Congrats!

You've completed your sewing adventure

**SHARE
YOUR** LOOK



Post your pattern and tag us
[@simplicity_creative_group](#) and [#simplicitypatterns](#)
for a chance to be featured on our social media.

Look for more PDF patterns at [simplicity.com](https://www.simplicity.com)

Have a question or need help with your sewing project call us at
1-888-588-2700

Simplicity
by design™

Simplicity ©2024 a division of IG Design Group Americas Inc. • Atlanta, GA 30342 USA www.thedesigngroup.com • All Rights Reserved. www.simplicity.com • Made in the U.S.A. Fabriqué aux États-Unis.

To be used for individual private home use only and not for commercial or manufacturing purposes. • A usage privé seulement et non à des fins commerciales ou de production en série. • Para uso privado solamente, no se puede utilizar con propósitos de comercialización o de producción en serie.