

S3042

Simplicity



sweet chic
by susan coulter

Average

TODDLERS' DRESS WITH SLEEVE VARIATIONS AND PURSE

Suggested Fabrics: Dress A,B,C,D in Stretch Knits only. See Pick-A-Knit® Rule. **Pockets, Bags, Linings, Appliqués:** Cotton/Cotton Blends. **Interfacing:** Lightweight Fusible. **Batting:** Low-loft.

Notions: A,B,C,D: One ½" (1.3cm) button (for dress), 2" (5cm) length of elastic cording, 2½" (6cm) length of ¾" (2cm) hook and loop tape (for bag). **Also for A:** ¾ yd. (0.7m) of ½" (1.3cm) ribbon, embroidery floss. **Also for B:** 2½ yds. (2.3m) of 1½" (44mm) jumbo rick rack, two ½" (1.3cm) pom-poms. **Also for C:** ¾ yd. (0.7m) of ¾" (1.5cm) ribbon, four 1" (2.5cm) pom-poms, embroidery floss. **Also for D:** 2½ yds. (2.3m) of 1½" (44mm) jumbo rick rack, one pkg. of baby rick, embroidery floss.

Sizes	½	1	2	3	4	
BODY MEASUREMENTS: Select pattern size based on body measurements						
Chest	19	20	21	22	23	ins.
Waist	19	19½	20	20½	21	"
Hip	28	31	34	37	40	"
Approx. Height	26½	31	35	38	41	"

A,B,C,D Contrast 2 (Bag Back) - 45** - ¾ yd. A,B,C,D Contrast 3 (Strap) - 45** - ¼ yd.
Lining A,B,C,D - 45** - ¾ yd. Interfacing A,B,C,D - 20" - ¾ yd.
Batting A,B,C,D - 9" x 13"

Dress A,B 60** ¾ ¼ 1 1 1½ Yds.

A Contrast 1 (Pocket and Bag Front, Ear) - 45** - ¾ yd.
Inner Ear Appliqué - 4" x 8" Eye Appliqué - 4" x 4"
Pupil Appliqué - 3" x 3" Nose Appliqué - 4" x 5"
Cheek Appliqué - 5" x 5" Paper-backed Fusible Web - ¾ yd.

B,C,D Contrast 1 (Pocket and Bag Front) - 45** - ¾ yd.
Face Appliqué B - 6" x 7" Eye Appliqué B - 3" x 4"
Cheek Appliqué B - 5" x 5" Band and Mouth Appliqué B - 7" x 9"
Leaf Appliqué B - 4" x 4" Eyebrow and Moustache Appliqué B - 6" x 7"
Nose Appliqué B - 4" x 4" Paper-backed Fusible Web B - ½ yd.

Dress C 60** ¾ ¾ ¼ 1 Yds.
Face Appliqué - 7" x 10" Eye Appliqué - 3" x 3"
Nose Appliqué - 4" x 5" Cheek and Heart Appliqué 1 - 5" x 9"
Heart Appliqué 2, 3, 5 - 5" x 6" each Heart Appliqué 4 - 3" x 7"
Paper-backed Fusible Web - 17" - ½ yd.

Dress D 60** ¾ ¾ ¼ ¾ ¾ Yds.
Interfacing - 20" - 1 yd.
Band Appliqué - 9" x 14" Cheek Appliqué - 5" x 5"
Seed Appliqué - 4" x 5" Paper-backed Fusible Web - ½ yd.

NOTE: Please refer to the sewing instructions for FINISHED GARMENT MEASUREMENTS.

*with nap **without nap

Moins Facile

ROBE AVEC VARIATIONS DE MANCHE, ET SAC POUR PETITS ENFANTS

Tissus Conseillés: Robe A,B,C,D en tricots extensible seulement. Reportez-vous à la règle Pick-A-Knit®. **Poches, sacs, doublures, appliqués:** Coton/Cotonnades. **Entoilage:** Thermocollant léger. **Quatine:** Quatine non épaisse.

Merci: A,B,C,D: 1 bouton de 1.3cm (pour robe), 5cm de longueur de elastique cordon, 5cm de longueur de ruban autoagrippant de 2cm (pour sac). **Aussi pour A:** 0.7m de ruban de 1.3cm, fil à broder. **Aussi pour B:** 2.3m de croquet géant de 44mm, 2 pompons de 1.3cm. **Aussi pour C:** 0.7m de ruban de 1.5cm, 4 pompons de 2.5cm, fil à broder. **Aussi pour D:** 2.3m de croquet géant de 44mm, un paquet de croquet miniature, fil à broder.

Tailles	½	1	2	3	4	
MESURES DU CORPS: Choisissez la taille du patron basée sur les mesures du corps						
Poitrine	48	51	53	56	58	cm
Taille	48	50	51	52	53	"
Hanches	71	79	86	94	102	"
Taille approx.	67	79	89	97	104	"

A,B,C,D Contraste 2 (Dos du sac) - 115cm* - 0.2m A,B,C,D Contraste 3 (Bretelle) - 0.3m
Doublure A,B,C,D - 115cm** - 0.2m Entoilage A,B,C,D - 51cm - 0.6m
Quatine A,B,C,D - 23cm x 33cm

Robe A,B 150cm* 0.8 0.8 0.9 1.0 m

A Contraste 1 (Poches et devant du sac, Oreille) - 115cm* -
Appliqué de l'Oreille Intérieure - 10cm x 20cm Appliqué de l'oeil - 10cm x 10cm
Appliqué de pupille - 8cm x 8cm Appliqué sur le nez - 10cm x 13cm
Appliqué de la joue - 13cm x 13cm Voile thermocollant sur papier - 0.3m

B,C,D Contraste 1 (Poches et devant du sac) - 115cm* - 0.3m
Appliqué du visage B - 15cm x 18cm Appliqué de l'oeil B - 8cm x 10cm
Appliqué de la joue B - 13cm x 13cm Appliqué de bande et bouche B - 18cm x 23cm
Appliqué de feuille B - 10cm x 10cm Appliqué de sourcils et moustache B - 15cm x 18cm
Appliqué sur le nez B - 10cm x 10cm Voile thermocollant sur papier B - 0.5m

Robe C 150cm* 0.7 0.7 0.8 0.9 m
Appliqué du visage - 18cm x 25cm Appliqué de l'oeil - 8cm x 8cm
Appliqué sur le nez - 10cm x 13cm Appliqué de la joue et cœur 1 - 13cm x 23cm
Appliqué de cœur 2, 3, 5 - 13cm x 15cm chacun Appliqué de cœur 4 - 8cm x 18cm
Voile thermocollant sur papier - 43cm - 0.5m

Robe D 150cm* 0.7 0.7 0.8 0.8 m
Entoilage - 51cm - 1.0m
Appliqué de bande - 23cm x 36cm Appliqué de la joue - 13cm x 13cm
Appliqué de graine - 10cm x 13cm Voile thermocollant sur papier - 43cm - 0.5m

NOTE: S'il vous plaît, reportez-vous aux instructions de couture pour les MESURES DES VÊTEMENTS

*avec sens **sans sens



PICK-A-KNIT® RULE

FOR THIS PATTERN - 4" (10 cm) OF KNIT FABRIC MUST STRETCH CROSSWISE FROM HERE
POUR CE PATRON - LE JERSEY DOIT S'ETIRER DANS LA LARGEUR DE 4" (10 cm) DEPUIS ICI
PARA ESTE PATRON - LAS MALLAS DEBEN ESTIRARSE A LO ANCHO POR 4" (10 cm) DESDE AQUI

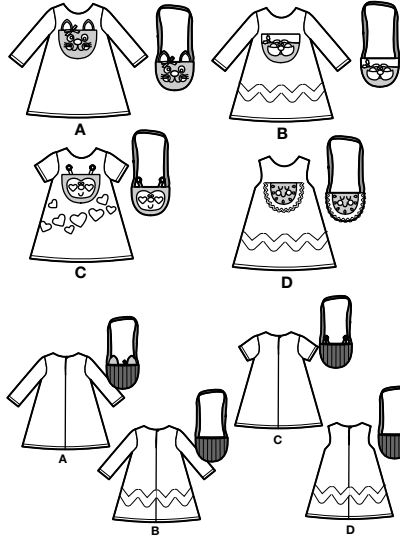


When using the Pick-A-Knit® rule to measure your fabrics stretch capacity, rule must be viewed or printed at 100%.
Quand vous utilisez la règle Pick-A-Knit® pour mesurer la capacité d'élasticité des tissus, la règle doit être visible ou imprimée à 100%.
Al utilizar la regla Pick-A-Knit® para medir la capacidad de elasticidad de las telas, la regla debe estar visible o impresa a 100%.

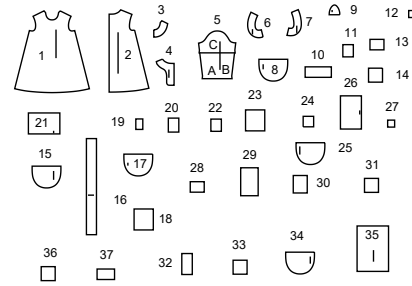
Use the 1 inch (2.54cm) box to ensure you are using rule at 100%
Utilisez la boîte de 2.54 cm pour vous assurer d'utiliser la règle à 100%.
Utilizar un cuadrado de 2.54 cm para asegurarse de estar usando la regla al 100%.

Simplicity®

Thank you for purchasing this Simplicity pattern. We made every effort to provide you with a high quality product.



37 PIECES



- 1 FRONT - A,B,C,D
- 2 BACK - A,B,C,D
- 3 FRONT FACING - A,B,C,D
- 4 BACK FACING - A,B,C,D
- 5 SLEEVE - A,B,C
- 6 FRONT ARMHOLE FACING - D
- 7 BACK ARMHOLE FACING - D
- 8 POCKET AND BAG FRONT - A
- 9 EAR - A
- 10 INNER EAR APPLIQUE - A
- 11 EYE APPLIQUE - A
- 12 PUPIL APPLIQUE - A
- 13 NOSE APPLIQUE - A
- 14 CHEEK APPLIQUE - A
- 15 BAG BACK - A,B,C,D
- 16 STRAP - A,B,C,D
- 17 POCKET AND BACK FRONT - B
- 18 FACE APPLIQUE - B
- 19 EYE APPLIQUE - B
- 20 CHEEK APPLIQUE - B
- 21 BAND AND MOUTH APPLIQUE - B
- 22 LEAF APPLIQUE - B
- 23 EYEBROW AND MUSTACHE APPLIQUE - B
- 24 NOSE APPLIQUE - B
- 25 POCKET AND BAG FRONT - C
- 26 FACE APPLIQUE - C
- 27 EYE APPLIQUE - C
- 28 NOSE APPLIQUE - C
- 29 CHEEK AND HEART APPLIQUE 1 - C
- 30 HEART APPLIQUE 2 - C
- 31 HEART APPLIQUE 3 - C
- 32 HEART APPLIQUE 4 - C
- 33 HEART APPLIQUE 5 - C
- 34 POCKET AND BAG FRONT - D
- 35 BAND APPLIQUE - D
- 36 CHEEK APPLIQUE - D
- 37 SEED APPLIQUE - D

Sizes	1/2	1	2	3	4
FINISHED GARMENT MEASUREMENTS (Includes Design and Wearing Ease)					
Width, lower edge					
Dress A,B,C,D	37 1/2	38 1/2	39 1/2	40 1/2	41 1/2
Finished back length from base of neck					
Dress A,B,C,D	17 1/2	19	20 1/2	22	23 1/2

General Directions

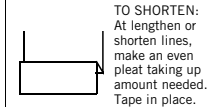
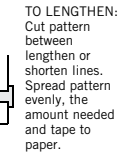
The Pattern

- SYMBOLS**
- ↔ GRAIN LINE Place on straight grain of fabric parallel to selvage
 - ⇄ PLACE SOLID LINE on fold of fabric.
 - CENTER FRONT OR BACK of garment.
 - ∇ NOTCHES
 - DOTS
 - CUTTING LINE
 - ⇄ LENGTHEN OR SHORTEN LINES

SEAM ALLOWANCE: 5/8" (1.5cm) unless otherwise stated is included but not printed on MULTI-SIZE PATTERNS. Mark your size with colored felt tip pen. See chart on tissue for how to use MULTI-SIZE PATTERNS.

ADJUST IF NEEDED

Make adjustments before placing pattern on fabric.



When lengthen or shorten lines are not given, make adjustments at lower edge of pattern.

Cutting/Marking

BEFORE CUTTING: PRESS pattern pieces with a warm dry iron. PRE-SHRINK fabric by pre-washing washables or steam-pressing non-washables.

CIRCLE your cutting layout.

PIN pattern to fabric as shown in Cutting Layouts.

• FOR DOUBLE THICKNESS: Fold fabric with RIGHT sides together.

• FOR SINGLE THICKNESS: Place fabric RIGHT side up.

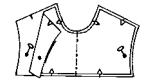
• FOR PILE, SHADED OR ONE WAY DESIGN FABRICS: Use "with nap" layouts

AFTER CUTTING:

Transfer markings to WRONG side of fabric before removing pattern. Use pin and chalk method or dressmaker's tracing paper and wheel.

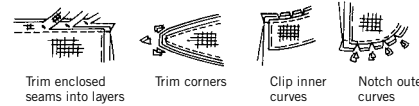
To Quick Mark:

- Snip edge of fabric to mark notches, ends of fold lines and center lines.
- Pin mark dots.



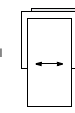
Sewing

- SEW garment following Sewing Directions.
- PIN or machine-baste seams matching notches.
- STITCH 5/8" (1.5 cm) seams unless otherwise stated.
- PRESS seams open unless otherwise indicated clipping when necessary so seams will lie flat.
- TRIM seams to reduce bulk, as shown below.



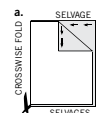
SPECIAL CUTTING NOTES

★ If layout shows a piece extending past fold, cut out all pieces except piece that extends.

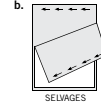


Open out fabric to single thickness. Cut extending piece on RIGHT side of fabric in position shown.

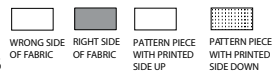
✳ Mark small arrows along both selvages indicating direction of nap or design. Fold fabric crosswise with RIGHT sides together, and cut along fold (a).



Turn one fabric layer around so arrows on both layers go in the same direction. Place RIGHT sides together (b).



Cutting Layouts



★ SEE SPECIAL CUTTING NOTES

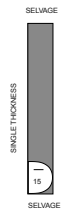
POSITION OF PATTERN PIECES MAY VARY SLIGHTLY ACCORDING TO YOUR PATTERN SIZE

A,B,C,D DRESS - SIZED FOR STRETCH KNITS ONLY

A,B,C,D CONTRAST 2 (BAG BACK)

USE PIECE 15

45" (115CM) WITH NAP ALL SIZES

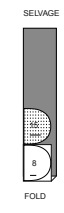


A,B,C,D LINING

USE PIECES 8 15

VIEW B- REPLACE PIECE 8 WITH PIECE 17
VIEW C- REPLACE PIECE 8 WITH PIECE 25
VIEW D- REPLACE PIECE 8 WITH PIECE 34

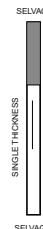
45" (115CM) WITH NAP ALL SIZES



A,B,C,D CONTRAST 3 (STRAP)

USE PIECE 16

45" (115CM) WITH NAP ALL SIZES

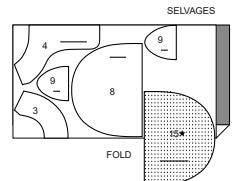


A,B,C INTERFACING

USE PIECES 3 4 8 9 15. OMIT PIECE 9 FOR VIEWS B C

VIEW B- REPLACE PIECE 8 WITH PIECE 17
VIEW C- REPLACE PIECE 8 WITH PIECE 25

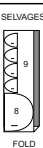
20" (51CM) ALL SIZES



A CONTRAST 1 (POCKET AND BAG FRONT, EAR)

USE PIECES 8 9

45" (115CM) WITH NAP ALL SIZES



A BATTING

CUT ONE OF PIECES 8 AND 15 FROM BATTING REMNANT

A INNER EAR APPLIQUE

CUT ONE OF PIECE 10 FROM REMNANT

A EYE APPLIQUE

CUT ONE OF PIECE 11 FROM REMNANT

A PUPIL APPLIQUE

CUT ONE OF PIECE 12 FROM REMNANT

A NOSE APPLIQUE

CUT ONE OF PIECE 13 FROM REMNANT

A CHEEK APPLIQUE

CUT ONE OF PIECE 14 FROM REMNANT

A PAPER BACKED FUSIBLE WEB

USE PIECES 10 11 12 13 14

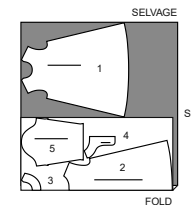
17" (43CM)



A,B DRESS

USE PIECES 1 2 3 4 5

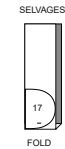
60" (150CM) WITH NAP ALL SIZES



B CONTRAST 1 (POCKET AND BAG FRONT)

USE PIECE 17

45" (115CM) WITH NAP ALL SIZES



B BATTING

CUT ONE OF PIECES 15 AND 17 FROM BATTING REMNANT

B FACE APPLIQUE

CUT ONE OF PIECE 18 FROM REMNANT

B EYE APPLIQUE

CUT ONE OF PIECE 19 FROM REMNANT

B CHEEK APPLIQUE

CUT ONE OF PIECE 20 FROM REMNANT

B BAND AND MOUTH APPLIQUE

CUT ONE OF PIECE 21 FROM REMNANT

B LEAF APPLIQUE

CUT ONE OF PIECE 22 FROM REMNANT

B EYEBROW AND MUSTACHE APPLIQUE

CUT ONE OF PIECE 23 FROM REMNANT

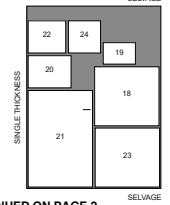
B NOSE APPLIQUE

CUT ONE OF PIECE 24 FROM REMNANT

B PAPER BACKED FUSIBLE WEB

USE PIECES 18 19 20 21 22 23 24

17" (43CM)



CUTTING LAYOUTS CONTINUED ON PAGE 2

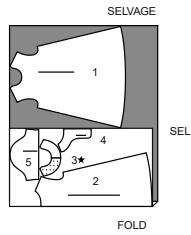
S3042

2 of 4

C DRESS

USE PIECES 1 2 3 4 5

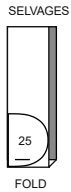
60" (150CM)
WITH NAP
ALL SIZES



C CONTRAST 1 (POCKET AND BAG FRONT)

USE PIECE 25

45" (115CM)
WITH NAP
ALL SIZES



C BATTING

CUT ONE OF PIECES 15 AND 25 FROM BATTING REMNANT

C FACE APPLIQUE

CUT ONE OF PIECE 26 FROM REMNANT

C EYE APPLIQUE

CUT ONE OF PIECE 27 FROM REMNANT

C NOSE APPLIQUE

CUT ONE OF PIECE 28 FROM REMNANT

C CHEEK AND HEART APPLIQUE 1

CUT ONE OF PIECE 29 FROM REMNANT

C HEART APPLIQUE 2

CUT ONE OF PIECE 30 FROM REMNANT

C HEART APPLIQUE 3

CUT ONE OF PIECE 31 FROM REMNANT

C HEART APPLIQUE 4

CUT ONE OF PIECE 32 FROM REMNANT

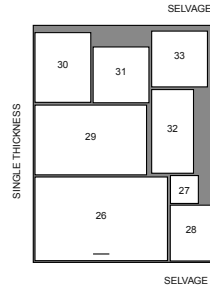
C HEART APPLIQUE 5

CUT ONE OF PIECE 33 FROM REMNANT

C PAPER BACKED FUSIBLE WEB

USE PIECES 26 27 28 29 30 31 32 33

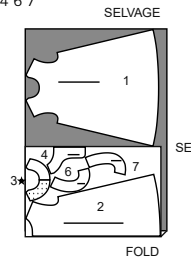
17" (43CM)



D DRESS

USE PIECES 1 2 3 4 6 7

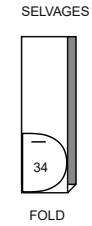
60" (150CM)
WITH NAP
ALL SIZES



D CONTRAST 1 (POCKET AND BAG FRONT)

USE PIECE 34

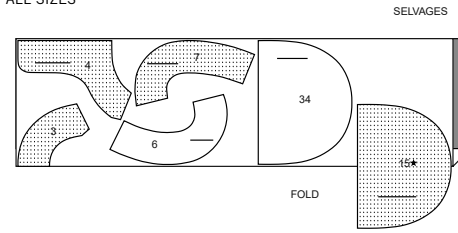
45" (115CM)
WITH NAP
ALL SIZES



D INTERFACING

USE PIECES 3 4 6 7 15 34

20" (51CM)
ALL SIZES



D BATTING

CUT ONE OF PIECES 15 AND 35 FROM BATTING REMNANT

D BAND APPLIQUE

CUT ONE OF PIECE 35 FROM REMNANT

D CHEEK APPLIQUE

CUT ONE OF PIECE 36 FROM REMNANT

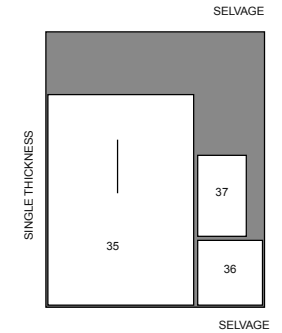
D SEED APPLIQUE

CUT ONE OF PIECE 37 FROM REMNANT

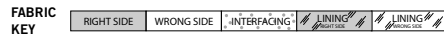
D PAPER BACKED FUSIBLE WEB

USE PIECES 35 36 37

17" (43CM)



Sewing Directions



Read **General Directions** on page 1 before you begin.

VIDEO SEWING METHODS

Sewing methods shown in **BOLD TYPE** are defined below:

EDGESTITCH - See **Machine Stitches: "how to edgestitch"** video.

FINISH - See **Seams: "how to finish seam allowances"** video.

SLIPSTITCH - See **Hand Stitching: "how to slip stitch"** video.

STAYSTITCH - See **Machine Stitches: "how to do stay-stitching"** video.

TACK - See **Hand Stitches: "how to tack"** video.

TRIM - See **Seams: "How to Sew: Trim, Clip, and Layer Seams"** video.

UNDERSTITCH - See **Machine Stitches: "how to understitch"** video.

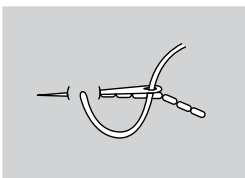
Sewing procedures **BOLD/ITALICIZED** in Sewing Directions are defined below.

BACKSTITCH - Work from right to left. Bring the thread up on the transferred design line and insert the needle a little to the right. Now bring the needle up again an equal distance to the left. Insert the needle again at the beginning of the last stitch.

SEWING TUTORIALS

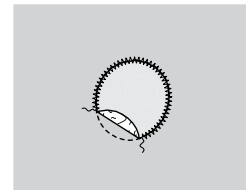
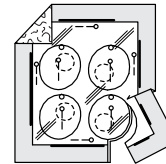


Build your skills viewing short, easy-to-follow videos at simplicity.com/sewingtutorials



SIMPLY THE BEST SEWING TECHNIQUES FOR KNITS

- Use a ball point or stretch needle.
- Stretch knits need seams that are supple enough to "give" with the fabric. You can sew them with straight stitches (stretching the fabric slightly as you sew), narrow zig-zag stitches or one of the stretch stitches built into many conventional machines, or on your serger.
- Some knits require very little or no pressing while sewing. Use the appropriate temperature setting. Press lightly or use steam.
- To prevent shoulder seams from stretching, pin center of hem tape, clear elastic or twill tape along seam line on front shoulder edges, then stitch the shoulder seams.
- Stitch hems in place 1/4" (6mm) from raw edge.
- Raw edges of hem and facings are left raw, unless using a serger.
- Use a twin sewing machine needle for a double stitched hem.



GENERAL DIRECTIONS FOR APPLIQUES

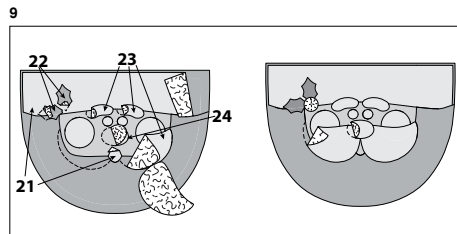
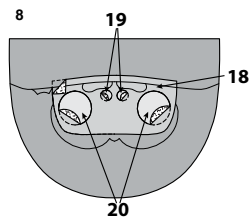
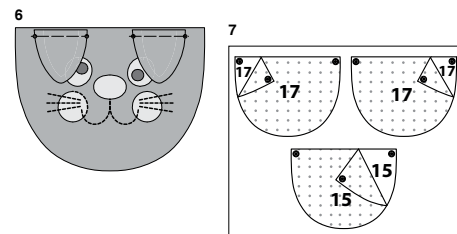
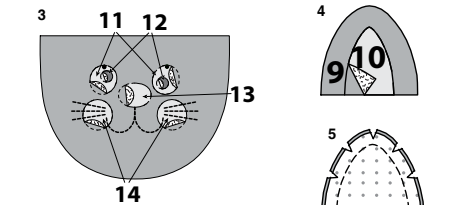
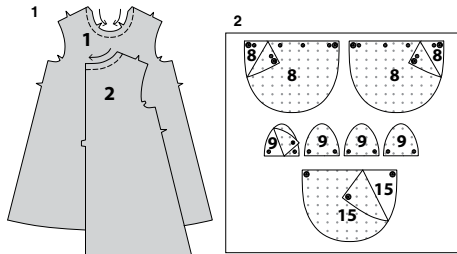
PREPARE - Fuse paper back fusible web to **WRONG** side of applique fabric following manufacturer's instructions. Pin pattern to **RIGHT** side of prepared fabric. Cut out each applique. Transfer markings to **RIGHT** side of applique using a washable fabric marking pen or pencil.

FUSE - Remove paper backing from applique. Pin applique(s) to item within placement lines as instructed in sewing directions. Fuse in place following manufacturer's instructions. Stitch appliques with a tight zigzag (satin) stitch or straight stitch along raw edges.

NOTE: Stitching will not be shown.

S3042

3 of 4



PATTERN PIECES WILL BE IDENTIFIED BY NUMBERS THE FIRST TIME THEY ARE USED.
STITCH SEAMS WITH RIGHT SIDES TOGETHER UNLESS OTHERWISE STATED.

DRESS AND BAG A, B, C, D

NOTE: The first view mentioned will be shown, unless otherwise mentioned.

1. **STAYSTITCH** neck edge of FRONT (1) and BACK (2) in direction of arrows.

NOTE: APPLIQUE INSTRUCTIONS ARE FOR BOTH THE POCKET AND THE BAG.

VIEW A, Appliques for pocket and bag

2. Apply fusible interfacing to **WRONG** side of each **POCKET AND BAG FRONT** (8) section, four **EAR** (9) sections, and one **BAG BACK** (15), following manufacturer's instructions.

3. PREPARE **EYE APPLIQUE** (11), **PUPIL APPLIQUE** (12), **NOSE APPLIQUE** (13), and **CHEEK APPLIQUE** (14).

For front, **FUSE** eye applique to **RIGHT** side of one pocket and bag front matching small dots. **FUSE** nose applique and cheek applique to front within placement lines. **FUSE** pupil appliques to eyes within placement lines.

Stitch mouth and whiskers along solid lines using a **BACKSTITCH**.

4. PREPARE **INNER EAR APPLIQUE** (10). For front of ears, **FUSE** each **INNER EAR APPLIQUE** (10) to **RIGHT** side of two **EAR** (9) sections, within placement lines.

5. Pin remaining ear sections to front ears, **RIGHT** sides together. Stitch curved edge in a 3/8" (1cm) seam, leaving straight lower edge open. **TRIM**.

6. Turn ear **RIGHT** sides out. Press. Pin ear to upper edge of pocket or bag front, with front side of ear down, matching small dots and raw edges. Baste.

VIEW B, Appliques for pocket and bag

7. Apply fusible interfacing to **WRONG** side of each **POCKET AND BAG FRONT** (17) section, and one **BAG BACK** (15), following manufacturer's instructions.

8. PREPARE **FACE APPLIQUE** (18), **EYE APPLIQUE** (19), **CHEEK APPLIQUE** (20).

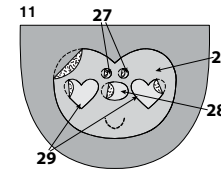
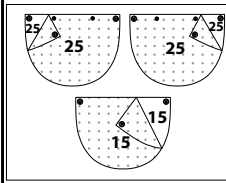
For front, **FUSE** face applique, **RIGHT** side of one pocket and bag front within placement lines. **FUSE** eye and cheek appliques to face within placement lines.

9. PREPARE **BAND AND MOUTH APPLIQUE** (21), **LEAF APPLIQUE** (22), **EYEBROW AND MUSTACHE APPLIQUE** (23), and **NOSE APPLIQUE** (24).

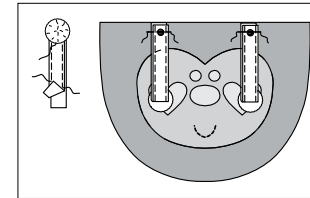
FUSE band and mouth appliques to front, over face, within placement lines.

FUSE leaf appliques to band, eyebrows and mustache appliques to band and face, and nose applique to face and mustache, within placement lines. Hand sew or glue pom-pom to band at small dot.

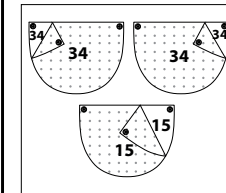
10



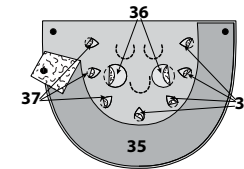
12



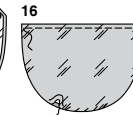
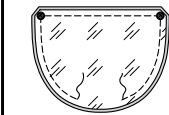
13



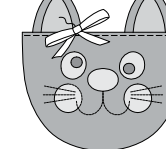
14



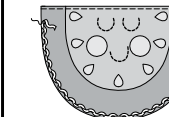
15



17



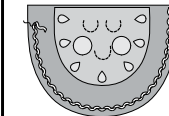
18



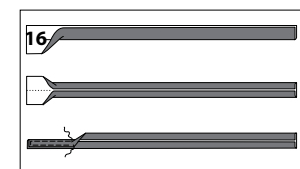
19



20



21



VIEW C, Appliques for pocket and bag

10. Apply fusible interfacing to **WRONG** side of each **POCKET AND BAG FRONT** (25) section, and one **BAG BACK** (15), following manufacturer's instructions.

11. PREPARE **FACE APPLIQUE** (26), **EYE APPLIQUE** (27), **NOSE APPLIQUE** (28), and **CHEEK AND HEART APPLIQUE** (29).

For front, **FUSE** face applique to **RIGHT** side of one pocket and bag front within placement lines.

FUSE eye and nose appliques to face within placement lines. For cheeks, **FUSE** two of the smaller heart appliques to face within placement lines. Larger hearts will be used in a later step.

Stitch mouth along solid line using a **BACKSTITCH**.

12. For each antenna, cut a length of 5/8" (1.5cm) wide ribbon, each 6" (15cm) long. Fold ribbon in half, bringing ends together. Stitch long edges. Hand sew a pom-pom to **RIGHT** side of each ribbon. On **OUTSIDE**, pin antennas to upper edge of front, face down, centered over small dots with ends even with raw edge. Baste.

VIEW D, Appliques for pocket and bag

13. Apply fusible interfacing to **WRONG** side of each **POCKET AND BAG FRONT** (34) section, and one **BAG BACK** (15), following manufacturer's instructions.

14. PREPARE **BAND APPLIQUE** (35), **CHEEK APPLIQUE** (36), and **SEED APPLIQUE** (37).

For front, **FUSE** band applique to **RIGHT** side of one pocket and bag front matching large dots, having raw edges even. **FUSE** cheek and seeds to front within placement lines.

Stitch eyes and mouth along solid lines using a **BACKSTITCH**.

CONTINUE AS FOLLOWS FOR VIEWS A, B, C, D POCKET

15. Pin one **LINING** section to pocket front, **RIGHT** sides together, matching large dots, having raw edges even. Stitch in a 3/8" (1cm) seam, leaving an opening for turning. **TRIM**.

16. Turn **RIGHT** side out. Press. **SLIPSTITCH** opening closed. **EDGESTITCH** close to upper edge of pocket.

17. **VIEW A:** Cut ribbon in half. Tie ribbon into a bow and hand sew to right ear as shown. Trim ends as desired.

18. **VIEW D:** Pin rick rack close to curved edge of pocket. Stitch through center of rick rack.

19. Pin pocket to front, matching large dots. Stitch curved edge, leaving straight upper edge open.

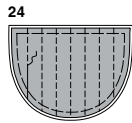
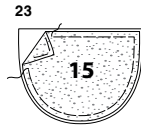
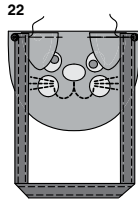
BAG

20. **VIEW D:** Optional, pin rick rack close to curved edge of bag front, just inside seamline. Stitch through center of rick rack.

21. Fold **STRAP** (16) in half lengthwise, with **WRONG** sides together. Press. Open out long edges of strap and turn them to **WRONG** side so that they meet at the crease. Press. Fold strap in half lengthwise, bringing pressed edges together. Stitch close to both long edges.

S3042

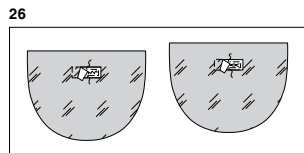
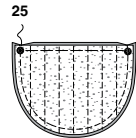
4 of 4



22. Pin strap to upper edge of bag front matching large dots. Baste.

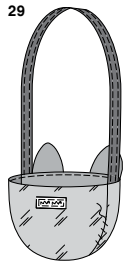
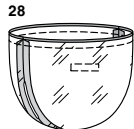
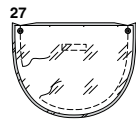
23. Baste **BATTING** to **WRONG** side of bag front and **BAG BACK** (15).

24. Transfer stitching lines on pattern piece to **RIGHT** side of bag back, continuing markings equally spaced across entire back. Stitch bag back along marked stitching lines.



25. Stitch bag front to bag back, **RIGHT** sides together at curved edges, leaving straight upper edge open.

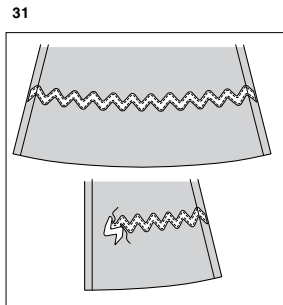
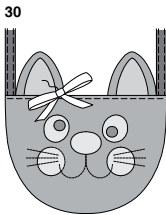
26. Cut a 2"(5cm) length of 3/4"(2cm) wide hook and loop tape. Separate tape. Pin loop half of tape to **RIGHT** side of one bag back **LINING** within placement lines. Stitch close to edges of tape. Stitch hook half of tape to remaining bag lining in same manner.



27. Stitch bag front **LINING** to bag back **LINING** at curved edges in same manner as bag, leaving an opening for turning.

28. Pin lining to bag, **RIGHT** sides together. Stitch upper edge.

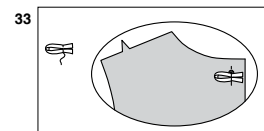
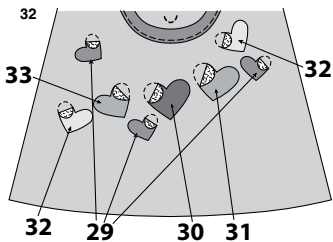
29. Turn bag **RIGHT** sides out through opening. **SLIPSTITCH** opening closed.



30. **VIEW A:** Tie remaining half of ribbon into a bow and hand sew to **RIGHT** ear as shown. Trim ends as desired.

DRESS FRONT AND BACK VIEWS A, B, C, D

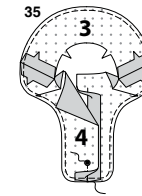
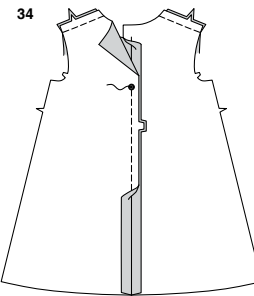
31. **VIEWS B, D:** Pin 1-1/2"(3.8cm) wide jumbo rick rack to front and back 5-1/4"(13.5cm) above lower edge, making sure that rick rack ends will line up at side and center back seams. Sew in place along long edges.



32. **VIEW C:** PREPARE HEART APPLIQUES (30), (31), (32), and (33). FUSE heart appliques to dress front within their matching placement lines, including remaining heart appliques (29).

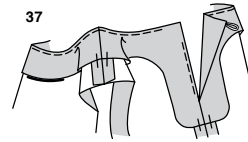
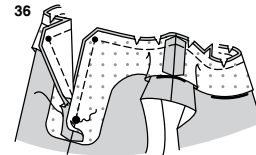
VIEWS A, B, C, D

33. To form back loop, cut a 2"(5cm) length of elastic cord. Fold cord in half bringing ends together. Sew ends together for about 5/8"(1.5cm) from ends. Pin loop to **OUTSIDE** of left back at small dot, just below neck seamline. Baste.



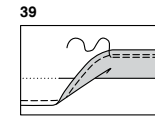
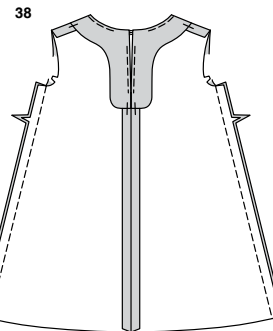
34. Stitch center back seam of back sections below large dot, back-stitching at large dot to reinforce seam. Stitch front to back at shoulders seams.

35. Apply fusible interfacing to **WRONG** side of **FRONT FACING** (3) and **BACK FACING** (4), following manufacturer's instructions. Stitch center back seam of back facing below large dot. Stitch shoulder seams of facing sections. **FINISH** unnotched edges.



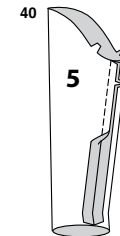
36. With **RIGHT** sides together, pin facing to dress matching centers, notches, large and small dots, and shoulder seams. Stitch, breaking stitching at large dot. **TRIM.**

37. **UNDERSTITCH** facing as far as possible. Turn facing to inside. Press. **TACK** facing to seam allowances.



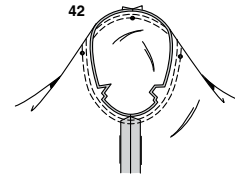
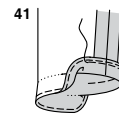
38. Stitch front to back at sides.

39. **FINISH** lower edge of dress. Turn up 1-1/4"(3.2cm) hem on lower edge of dress. Press. Stitch 1/4"(6mm) from inner edge of hem.



CONTINUE AS FOLLOWS FOR VIEWS A, B, C

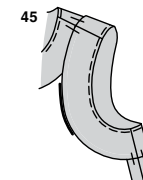
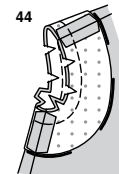
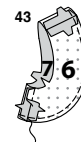
40. Stitch seam in **SLEEVE** (5).



41. **FINISH** lower edge of sleeve. Turn up 3/4"(2cm) hem on lower edge of sleeve. Press. Stitch 1/4"(6mm) from inner edge of hem.

42. With right sides together, pin sleeve into armhole with center small dot at shoulder seam, matching underarm seams, notches and remaining small dots. Baste. Stitch. Stitch again 1/4"(6mm) away in seam allowance. Trim close to stitching between notches.

CONTINUE AS FOLLOWS FOR VIEW D



43. Apply fusible interfacing to **WRONG** side of **FRONT ARMHOLE FACING** (6) and **BACK ARMHOLE FACING** (7) following manufacturer's instructions. Stitch shoulder and side seams of facing sections. **FINISH** unnotched edge of facing.

44. Pin facing to armhole edge of dress matching notches and seams. Stitch. **TRIM.**

45. **UNDERSTITCH** facing. Turn facing to **INSIDE**. Press. **TACK** facing to seams.



Congrats!

You've completed your sewing adventure

**SHARE
YOUR** LOOK



Post your pattern and tag us
[@simplicity_creative_group](#) and [#simplicitypatterns](#)
for a chance to be featured on our social media.

Look for more PDF patterns at [simplicity.com](https://www.simplicity.com)

Have a question or need help with your sewing project call us at
1-888-588-2700



Simplicity ©2024 a division of IG Design Group Americas Inc. • Atlanta, GA 30342 USA www.thedesigngroup.com • All Rights Reserved. www.simplicity.com • Made in the U.S.A. Fabriqué aux États-Unis.

To be used for individual private home use only and not for commercial or manufacturing purposes. • A usage privé seulement et non à des fins commerciales ou de production en série. • Para uso privado solamente, no se puede utilizar con propósitos de comercialización o de producción en serie.