

S3036

**mig** A DIY & LIFESTYLE BRAND



Easy

**MISSES' PANTS**

**Suggested Fabrics:** Cotton Blends, Double Knit, Lightweight Denim, Linen Blends, Ponte, Stretch Wovens, Wool and Wool Blends. **Lining:** Cotton Blends, Polyester Blends.

**Notions:** 2½ yds. (2.4m) of ½" (1.3cm) elastic, 2½ yds. (1.9m) of ½" (1.3cm) twill tape.

Sizes	8	10	12	14	16	18	20	22	24	26
European	34	36	38	40	42	44	46	48	50	52

**BODY MEASUREMENTS: Select pattern size based on body measurements**

Bust	31½	32½	34	36	38	40	42	44	46	48	Ins.
Waist	24	25	26½	28	30	32	34	37	39	41½	"
Hip-9" below waist	33½	34½	36	38	40	42	44	46	48	50	"
Back-neck to waist	15¾	16	16¼	16½	16¾	17	17¼	17½	17¾	17¾	"

Pants	45**	2¾	2¾	2¾	2¾	2¾	2¾	2¾	2¾	2¾	Yds.
60**	1¾	1¾	2¼	2¼	2¼	2¼	2¾	2¾	2¾	2¾	"

**Lining** 45\*\*\* - ½ yd.

**FINISHED GARMENT MEASUREMENTS (Includes Design and Wearing Ease)**

Hip	39	40	41½	43½	45½	47½	49½	51½	53½	55½	Ins.
Width, each leg											
Pants	24¼	24¾	25½	26½	27½	28½	29½	30½	31½	32½	Ins.
Finished side length from waist											
Pants	41¾	42	42¼	42¾	42¾	43	43¼	43¾	43¾	44	Ins.

\*with nap \*\*without nap

Facile

**PANTALON POUR JEUNES FEMMES**

**Tissus Conseillés:** Cotonnades, Tricot double, Denim léger, Lin mélangés, Tricot ponte, Tissus tissés extensibles, Laine et Lainages. Doublure: Cotonnades, Mélanges de polyester.

**Mercerie:** 2.4m d'élastique de 1.3cm, 1.9m de talonnette de coton de 1.3cm.

Tailles	8	10	12	14	16	18	20	22	24	26
Françaises	36	38	40	42	44	46	48	50	52	54
Européen	34	36	38	40	42	44	46	48	50	52

**MESURES DU CORPS: Choisissez la taille du patron basée sur les mesures du corps**

Poitrine	80	83	87	92	97	102	107	112	117	122	cm
Taille	61	64	67	71	76	81	87	94	99	106	"

**Hanches (23cm au-dessous de la taille)**

	85	88	92	97	102	107	112	117	122	127	cm
Dos du cou à la taille	40	40.5	41.5	42	42.5	43	44	44	44.5	44.5	"

Pantalon	115cm*	2.5	2.5	2.5	2.6	2.6	2.6	2.6	2.6	2.6	m
	150cm*	1.5	1.5	2.1	2.1	2.1	2.1	2.1	2.4	2.4	"

**Doublure** 115cm\*\* - 0.5m

**MESURES DES VÊTEMENTS FINI (Motif et aisance de port compris)**

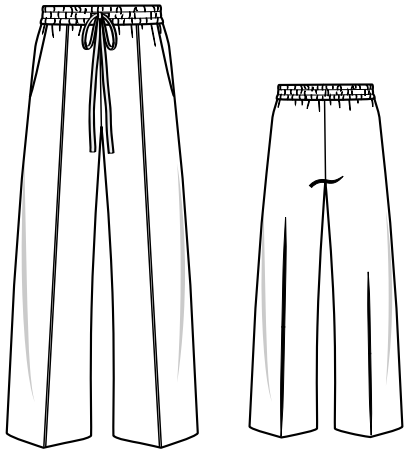
Hanches	99	102	105	110	116	121	126	131	136	141	cm
Largeur, chaque jambe											
Pantalon	62	63	65	67	70	72	75	77	80	83	cm
Longueur finie – côté, taille à l'ourlet											
Pantalon	106	107	107	108	109	109	110	110	111	112	cm

\*avec sens \*\*sans sens

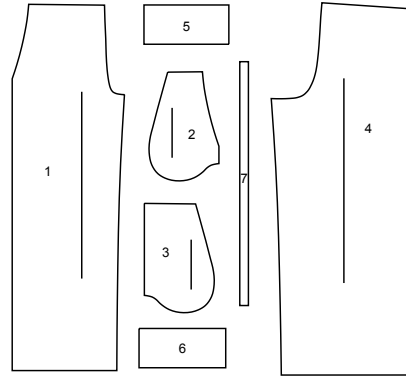


# Simplicity®

Thank you for purchasing this Simplicity pattern.  
We made every effort to provide you with a high quality product.



**miG** A DIY & LIFESTYLE BRAND



- 1 Front
- 2 Pocket Facing
- 3 Side Front and Pocket
- 4 Back
- 5 Front Casing
- 6 Back Casing
- 7 Guide for Elastic


[www.simplicity.com](http://www.simplicity.com)

[info@simplicity.com](mailto:info@simplicity.com)


1-888-588-2700

## General Directions

### The Pattern



**GRAIN LINE** Place on straight grain of fabric parallel to selvage



**PLACE SOLID LINE** on fold of fabric.



**CENTER FRONT OR BACK** of garment.



**NOTCHES**



**DOTS**



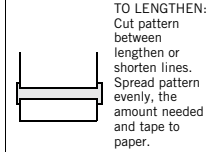
**CUTTING LINE**



**LENGTHEN OR SHORTEN LINES**

**SEAM ALLOWANCE:** 5/8" (1.5cm) unless otherwise stated is included but not printed on MULTI-SIZE PATTERNS. Mark your size with colored felt tip pen. See chart on tissue for how to use MULTI-SIZE PATTERNS.

**ADJUST IF NEEDED**  
Make adjustments before placing pattern on fabric.



**TO LENGTHEN:** Cut pattern between lengthen or shorten lines. Spread pattern evenly, the amount needed and tape to paper.

**TO SHORTEN:** At lengthen or shorten lines, make an even pleat taking up amount needed. Tape in place.

When lengthen or shorten lines are not given, make adjustments at lower edge of pattern.

### Cutting/Marking

#### BEFORE CUTTING:

PRESS pattern pieces with a warm dry iron. PRE-SHRINK fabric by pre-washing washables or steam-pressing non-washables.

CIRCLE your cutting layout.

PIN pattern to fabric as shown in Cutting Layouts.

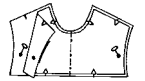
- **FOR DOUBLE THICKNESS:** Fold fabric with RIGHT sides together.
- **FOR SINGLE THICKNESS:** Place fabric RIGHT side up.
- **FOR PILE, SHADED OR ONE WAY DESIGN FABRICS:** Use "with nap" layouts

#### AFTER CUTTING:

Transfer markings to WRONG side of fabric before removing pattern. Use pin and chalk method or dressmaker's tracing paper and wheel.

#### To Quick Mark:

- Snip edge of fabric to mark notches, ends of fold lines and center lines.
- Pin mark dots.



### Sewing

- SEW garment following **Sewing Directions**.
- PIN or machine-baste seams matching notches.
- STITCH 5/8" (1.5 cm) seams unless otherwise stated.
- PRESS seams open unless otherwise indicated clipping when necessary so seams will lie flat.
- TRIM seams to reduce bulk, as shown below.



Trim enclosed seams into layers



Trim corners



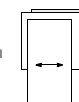
Clip inner curves



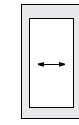
Notch outer curves

### SPECIAL CUTTING NOTES

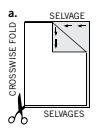
★ If layout shows a piece extending past fold, cut out all pieces except piece that extends.



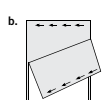
Open out fabric to single thickness. Cut extending piece on RIGHT side of fabric in position shown.



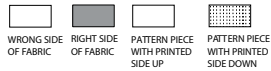
✱ Mark small arrows along both selvages indicating direction of nap or design. Fold fabric crosswise with RIGHT sides together, and cut along fold (a).



Turn one fabric layer around so arrows on both layers go in the same direction. Place RIGHT sides together (b).



## Cutting Layouts

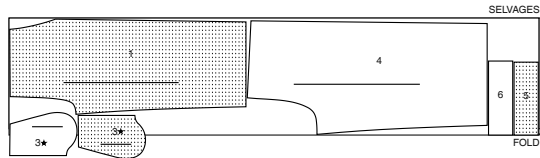


POSITION OF PATTERN PIECES MAY VARY SLIGHTLY ACCORDING TO YOUR PATTERN SIZE

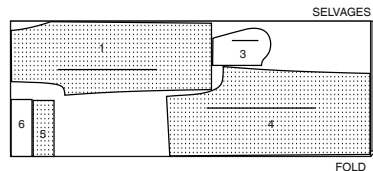
### PANTS

USE PIECES 1 3 4 5 6

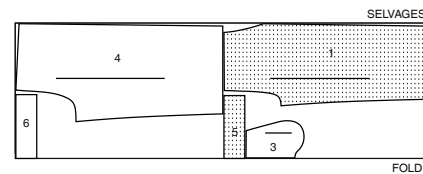
45" (115CM)  
WITH NAP  
ALL SIZES



60" (150CM)  
WITH NAP  
SIZES 8 10 12 14 16 18 20



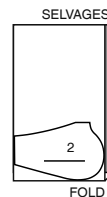
60" (150CM)  
WITH NAP  
SIZES 22 24 26



### LINING

USE PIECE 2

45" (115CM)  
WITHOUT NAP  
ALL SIZES



## Sewing Directions

**FABRIC KEY**



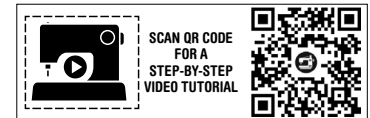
Sewing methods in **BOLD TYPE** in Sewing Instructions are explained below.:

**FINISH** - Stitch 1/4" (6mm) from raw edge and finish with one of the following: (1) Pink OR (2) Overcast OR (3) Turn in along stitching and stitch close to fold OR (4) Overlock.

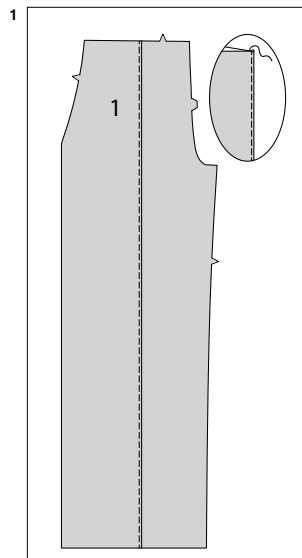
**OPTIONAL FOR HEMS:** Apply Seam Binding.

**SLIPSTITCH** - Slide needle through a folded edge, then pick up a thread of underneath fabric.

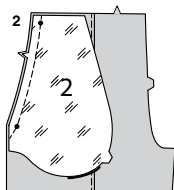
**UNDERSTITCH** - Open out facing or underside of garment; stitch to seam allowance close to seam.



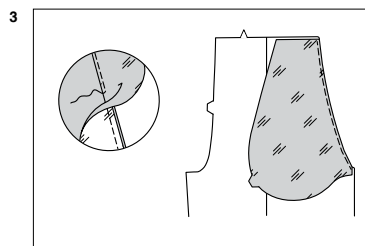
## PANTS



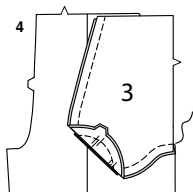
- 1.** To form pin tucks on FRONT (1), fold along fold line for tuck, with WRONG sides together. Press. Stitch 1/8" (3mm) away from pressed edge, through all thicknesses.



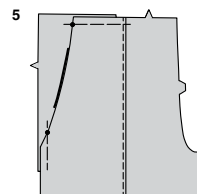
- 2.** With RIGHT sides together and raw edges even, pin POCKET FACING (2) to front, matching small dots. Stitch single notched edge. Trim seam.



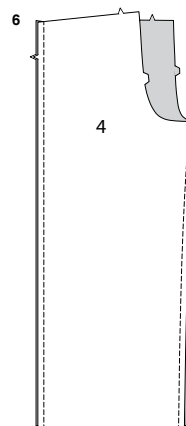
- 3. UNDERSTITCH** pocket facing. Turn facing to INSIDE; press.



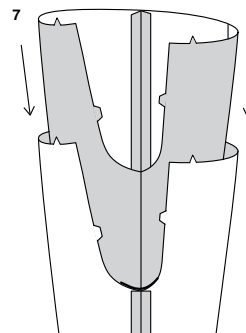
- 4.** On INSIDE, with RIGHT sides together, pin SIDE FRONT AND POCKET (3) section to pocket facing, having raw edges even. Stitch double notched edge, as shown.



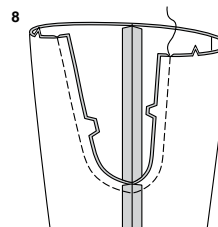
- 5.** On OUTSIDE, lap garment front over yoke and pocket section, matching small dots, having raw edges even; pin. Baste side and upper edges together.



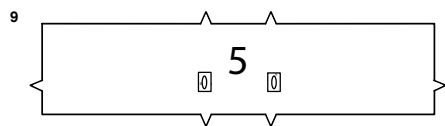
- 6.** Stitch front to BACK (4) at inner leg and side seams.



- 7.** With RIGHT sides together, insert one leg INSIDE the other.



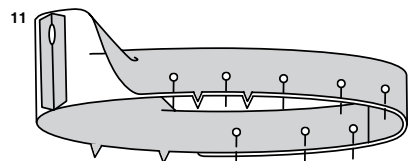
- 8.** With RIGHT sides together, pin center seam, matching inner leg seams and notches. Stitch. To reinforce seam, stitch again over first stitching.



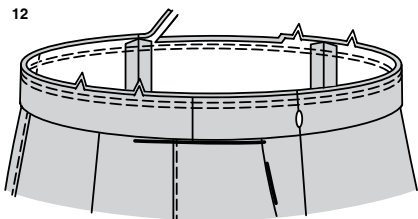
- 9.** Apply a piece of fusible interfacing remnant to one FRONT CASING (5) section large enough to cover each buttonhole area, following manufacturer's directions. Make buttonholes in casing at markings. This is the front casing.



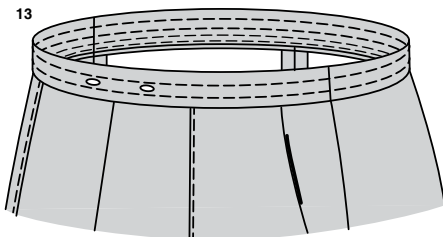
- 10.** With RIGHT sides together, stitch side seams of front and BACK CASING (6) sections, leaving an opening in LEFT side seam between small dots, as shown. Back-stitch at small dots to reinforce seam.



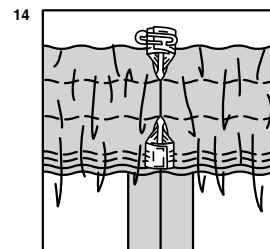
- 11.** Fold casing in half, lengthwise, with WRONG sides together, having raw edges even. Pin raw edges together.



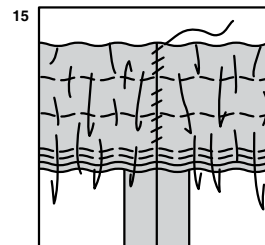
- 12.** The side with the opening is the underside of the casing. With the underside of casing facing you, pin casing to garment, matching centers and side seams. Stitch along seam line. Stitch again 1/4" (6mm) from first stitching within seam allowance. Trim close to second stitching.



- 13.** Press seam toward garment, pressing casing out. To form three separate casings, stitch along stitching lines, as shown.

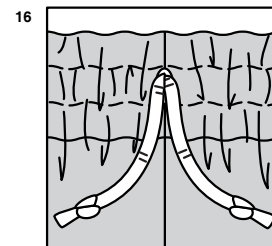


- 14.** Cut two pieces of elastic the length of GUIDE FOR ELASTIC (7). Insert elastic through opening in upper and lower casings, working elastic through all rows at same time. This eliminates that tug-of-war that you always have when trying to pull that last piece of elastic through an already bunched up casing. Overlap ends and hold with safety pins. Try on garment and adjust to fit. Stitch ends of elastic together securely.

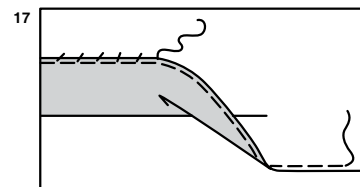


- 15. SLIPSTITCH** opening edges of each casing together. Distribute fullness evenly.

**TIP-** To secure elastic so it won't twist in wearing, stitch through all thicknesses of casing in the groove of each seam.



- 16.** Cut a piece of twill tape 62" (157cm) long. Attach a safety pin to one end of twill tape. Insert pin and drawstring through one buttonhole opening in front casing. Work drawstring through entire casing and out through remaining buttonhole, having ends extend evenly in the front. Knot ends of drawstring.



- 17.** Press up hem on lower edge of pants. **FINISH** raw edge. **SLIPSTITCH** hem in place.



# Congrats!

You've completed your sewing adventure

---

## SHARE YOUR LOOK



Post your pattern and tag us  
[@simplicity\\_creative\\_group](#) and [#simplicitypatterns](#)  
for a chance to be featured on our social media.

Look for more PDF patterns at [simplicity.com](https://www.simplicity.com)

Have a question or need help with your sewing project call us at  
1-888-588-2700



Simplicity ©2024 a division of IG Design Group Americas Inc. • Atlanta, GA 30342 USA [www.thedesigngroup.com](https://www.thedesigngroup.com) • All Rights Reserved. [www.simplicity.com](https://www.simplicity.com) • Made in the U.S.A. Fabriqué aux États-Unis.

To be used for individual private home use only and not for commercial or manufacturing purposes. • A usage privé seulement et non à des fins commerciales ou de production en série. • Para uso privado solamente, no se puede utilizar con propósitos de comercialización o de producción en serie.