

S3032

Simplicity®



Average

MISSES' BLOUSES WITH A/B,C,D CUP SIZES

Suggested Fabrics: Chambray, Cotton Blends, Denim, Poplin. **Interfacing:** Lightweight Fusible.

Notions: A,B: 1 yd. (1.0m) of ½" (1.3cm) elastic. **Also for A:** Six ¾" (1.5cm) buttons. **Also for B:** Seven ¾" (1.5cm) buttons. **C:** Seven ¾" (1.5cm) buttons, eight ½" (1cm) buttons.

Sizes	8	10	12	14	16	18	20	22	24	26
European	34	36	38	40	42	44	46	48	50	52

BODY MEASUREMENTS: Select pattern size based on body measurements

Bust	31½	32½	34	36	38	40	42	44	46	48	Ins.
Waist	24	25	26½	28	30	32	34	37	39	41½	"
Hip-9" below waist	33½	34½	36	38	40	42	44	46	48	50	"
Back-neck to waist	15¾	16	16¾	16¾	16¾	17	17¼	17¾	17¾	17¾	"

Blouse A	45**	2½	2½	2½	2½	2½	2½	2½	3	3	Yds.
	60**	1½	1½	1½	1½	1½	1½	2	2	2½	"
Interfacing		20"									¾ yd.

Blouse B	45**	2½	2½	2½	3½	3½	3½	3½	3½	3½	Yds.
	60**	2	2¼	2¼	2½	2½	2½	2½	2½	2½	"
Interfacing		20"									¾ yd.

Blouse C	45**	3	3	3	3½	3½	4	4½	4½	4½	Yds.
	60**	2½	2½	2½	2½	2½	2½	2¾	2¾	2¾	"
Interfacing		20"									1½ yds.

FINISHED GARMENT MEASUREMENTS (Includes Design and Wearing Ease)

A/B Bust Cup	36	37	38½	40½	42½	44½	46½	48½	50½	52½	Ins.
C Bust Cup	37	38	39½	41½	43½	45½	47½	49½	51½	53½	"
D Bust Cup	38	39	40½	42½	44½	46½	48½	50½	52½	54½	"
A,B,C Waist	29	30	31½	33½	35½	37½	39½	41½	43½	45½	"
Width, lower edge											
Blouse A	34	35	36½	38½	40½	42½	44½	46½	48½	50½	Ins.
Finished back length from base of neck											
Blouse A	19½	19¾	20	20¼	20½	20¾	21	21¼	21½	21¾	Ins.
Blouse B,C	22¾	23	23¾	23¾	23¾	24	24¼	24½	24¾	25	"

*with nap **without nap

Moins Facile

CHEMISIERS AVEC TAILLES DE BONNET A/B,C,D POUR JEUNES FEMMES

Tissus Conseillés: Chambray, Cotonnades, Denim, Popeline. **Entoilage:** Thermocollant léger.

Mercerie: A,B: 1.0m d'élastique de 1.3cm. **Aussi pour A:** 6 boutons de 1.5cm. **Aussi pour B:** 7 boutons de 1.5cm. **C:** 7 boutons de 1.5cm, 8 boutons de 1cm.

Tailles	8	10	12	14	16	18	20	22	24	26
Françaises	36	38	40	42	44	46	48	50	52	54
Européen	34	36	38	40	42	44	46	48	50	52

MESURES DU CORPS: Choisissez la taille du patron basée sur les mesures du corps

Poitrine	80	83	87	92	97	102	107	112	117	122	cm
Taille	61	64	67	71	76	81	87	94	99	106	"
Hanches (23cm au-dessous de la taille)											

Dos du cou à la taille	85	88	92	97	102	107	112	117	122	127	cm
	40	40.5	41.5	42	42.5	43	44	44	44.5	44.5	"

Chemisier A	115cm*	1.9	1.9	2.1	2.4	2.4	2.4	2.5	2.6	2.7	2.7	m
	150cm*	1.4	1.4	1.4	1.4	1.4	1.4	1.8	1.8	1.9	1.9	"

Entoilage	51cm - 0.7m
-----------	-------------

Chemisier B	115cm*	2.4	2.4	2.5	2.9	2.9	3.0	3.1	3.2	3.3	3.4	m
	150cm*	1.8	2.1	2.1	2.2	2.2	2.2	2.2	2.4	2.4	2.4	"

Entoilage	51cm - 0.8m
-----------	-------------

Chemisier C	115cm*	2.6	2.7	2.7	3.4	3.5	3.7	3.7	3.8	3.9	3.9	m
	150cm*	2.3	2.3	2.4	2.4	2.4	2.4	2.5	2.5	2.5	2.6	"

Entoilage	51cm - 1.0m
-----------	-------------

MESURES DES VÊTEMENTS FINI (Motif et aisance de port compris)

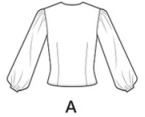
A/B Poitrine-Bonnet	91	94	98	103	108	113	118	123	128	133	cm
C Poitrine-Bonnet	94	97	100	105	110	116	121	126	131	136	"
D Poitrine-Bonnet	97	99	103	108	113	118	123	128	133	138	"
A,B,C Taille	74	76	80	85	90	95	100	105	110	116	"

Largeur à l'ourlet											
Blouse A	86	89	93	98	103	108	113	118	123	128	cm

Longueur finie – dos, votre nuque à l'ourlet											
Chemisier A	50	50	51	51	52	53	53	54	55	55	cm

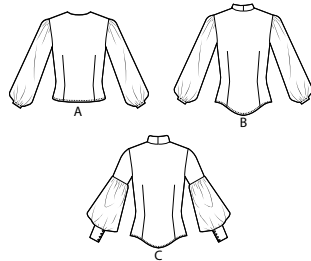
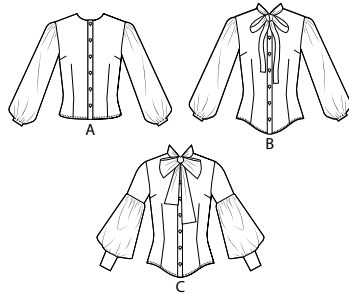
Chemisier B,C	58	58	59	60	60	61	62	62	63	64	"
---------------	----	----	----	----	----	----	----	----	----	----	---

*avec sens **sans sens

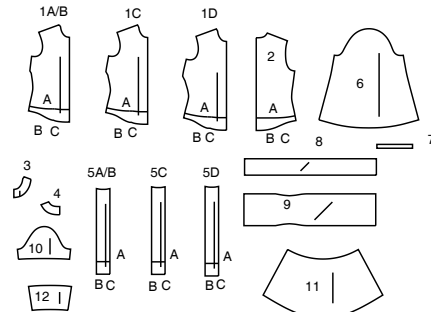


Simplicity®

Thank you for purchasing this Simplicity pattern.
We made every effort to provide you with a high quality product.



12 PIECES



1A/B FRONT - A,B,C (CUP A/B)
1C FRONT - A,B,C (CUP C)
1D FRONT - A,B,C (CUP D)
2 BACK - A,B,C
3 FRONT FACING - A,B,C
4 BACK FACING - A,B,C
5A/B PLACKET - A,B,C (CUP A/B)
5C PLACKET - A,B,C (CUP C)

5D PLACKET - A,B,C (CUP D)
6 SLEEVE - A,B
7 ELASTIC GUIDE FOR SLEEVE - A,B
8 COLLAR - B
9 COLLAR - C
10 UPPER SLEEVE - C
11 LOWER SLEEVE - C
12 CUFF - C



www.simplicity.com



info@simplicity.com



1-888-588-2700

General Directions

The Pattern



SYMBOLS
GRAIN LINE Place on straight grain of fabric parallel to selvage



PLACE SOLID LINE on fold of fabric.



CENTER FRONT OR BACK of garment.



NOTCHES



DOTS



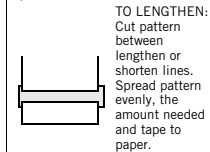
CUTTING LINE



LENGTHEN OR SHORTEN LINES

SEAM ALLOWANCE: 5/8" (1.5cm) unless otherwise stated is included but not printed on MULTI-SIZE PATTERNS. Mark your size with colored felt tip pen. See chart on tissue for how to use MULTI-SIZE PATTERNS.

ADJUST IF NEEDED
Make adjustments before placing pattern on fabric.



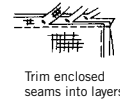
TO LENGTHEN:
Cut pattern between lengthen or shorten lines. Spread pattern evenly, the amount needed and tape to paper.

TO SHORTEN:
At lengthen or shorten lines, make an even pleat taking up amount needed. Tape in place.

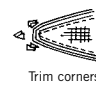
When lengthen or shorten lines are not given, make adjustments at lower edge of pattern.

Sewing

- SEW garment following **Sewing Directions**.
- PIN or machine-baste seams matching notches.
- STITCH 5/8" (1.5 cm) seams unless otherwise stated.
- PRESS seams open unless otherwise indicated clipping when necessary so seams will lie flat.
- TRIM seams to reduce bulk, as shown below.



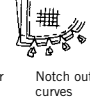
Trim enclosed seams into layers



Trim corners



Clip inner curves



Notch outer curves

Cutting/Marking

BEFORE CUTTING:

PRESS pattern pieces with a warm dry iron. PRE-SHRINK fabric by pre-washing washables or steam-pressing non-washables.

CIRCLE your cutting layout.

PIN pattern to fabric as shown in Cutting Layouts.

• FOR DOUBLE THICKNESS: Fold fabric with RIGHT sides together.

• FOR SINGLE THICKNESS: Place fabric RIGHT side up.

• FOR PILE, SHADED OR ONE WAY DESIGN FABRICS: Use "with nap" layouts

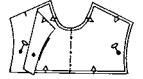
AFTER CUTTING:

Transfer markings to WRONG side of fabric before removing pattern. Use pin and chalk method or dressmaker's tracing paper and wheel.

To Quick Mark:

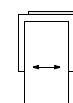
• Snip edge of fabric to mark notches, ends of fold lines and center lines.

• Pin mark dots.



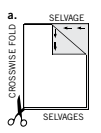
SPECIAL CUTTING NOTES

★ If layout shows a piece extending past fold, cut out all pieces except piece that extends.

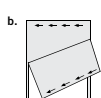


Open out fabric to single thickness. Cut extending piece on RIGHT side of fabric in position shown.

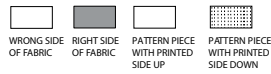
✱ Mark small arrows along both selvages indicating direction of nap or design. Fold fabric crosswise with RIGHT sides together, and cut along fold (a).



Turn one fabric layer around so arrows on both layers go in the same direction. Place RIGHT sides together (b).



Cutting Layouts



POSITION OF PATTERN PIECES MAY VARY SLIGHTLY ACCORDING TO YOUR PATTERN SIZE

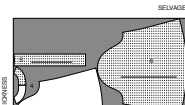
BLOUSE A

USE PIECES 1(A/B,C,D) 2 3 4 5(A/B,C,D) 6

45" (115CM)

WITH NAP

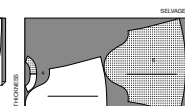
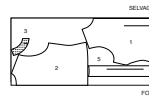
SIZES 8 10 12 14 16 18 20



45" (115CM)

WITH NAP

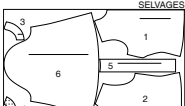
SIZES 22 24 26



60" (150CM)

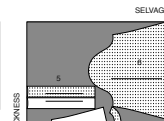
WITH NAP

SIZES 8 10 12 14 16 18



60" (150CM)

WITH NAP
SIZES 20 22 24 26



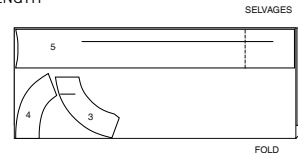
NOTE: DASHED LINE SHOWN ON PATTERN PIECES IN CUTTING LAYOUTS INDICATES CUTTING LINE FOR SHORTER LENGTH

INTERFACING A,B

PIECES 3 4 5 (A/B,C,D)

20" (51CM)

ALL SIZES



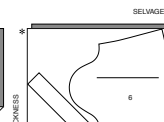
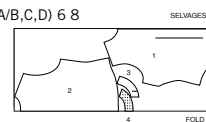
BLOUSE B

USE PIECES 1(A/B,C,D) 2 3 4 5(A/B,C,D) 6 8

45" (115CM)

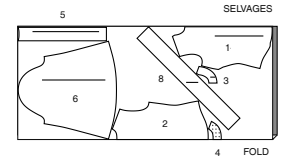
WITH NAP

ALL SIZES



60" (150CM)

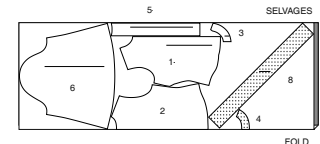
WITH NAP
SIZE 8



60" (150CM)

WITH NAP

SIZES 10 12 14 16 18 20

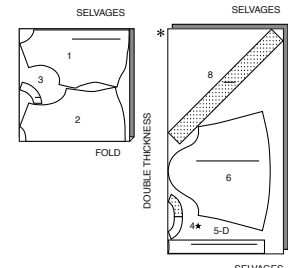


60" (150CM)

WITH NAP

SIZES 22 24 26

CUT ONE OF PIECE 4



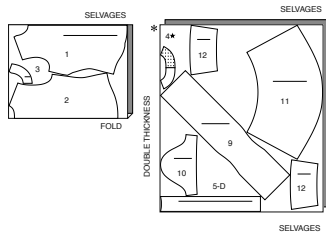
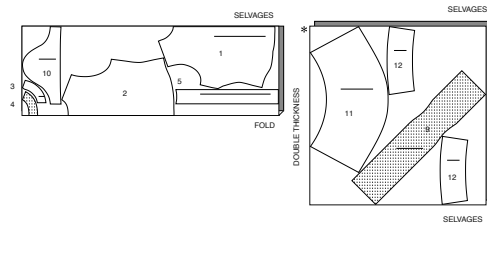
CUTTING LAYOUTS CONTINUED ON PAGE 2

S3032

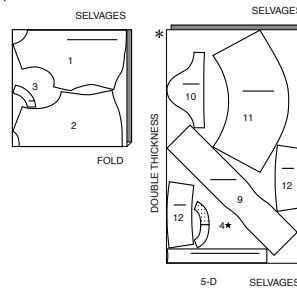
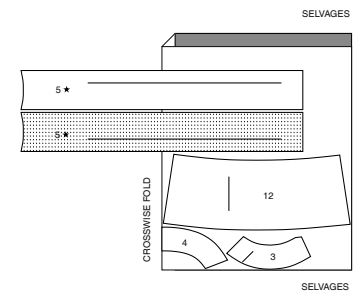
2 of 4

BLOUSE C

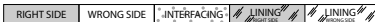
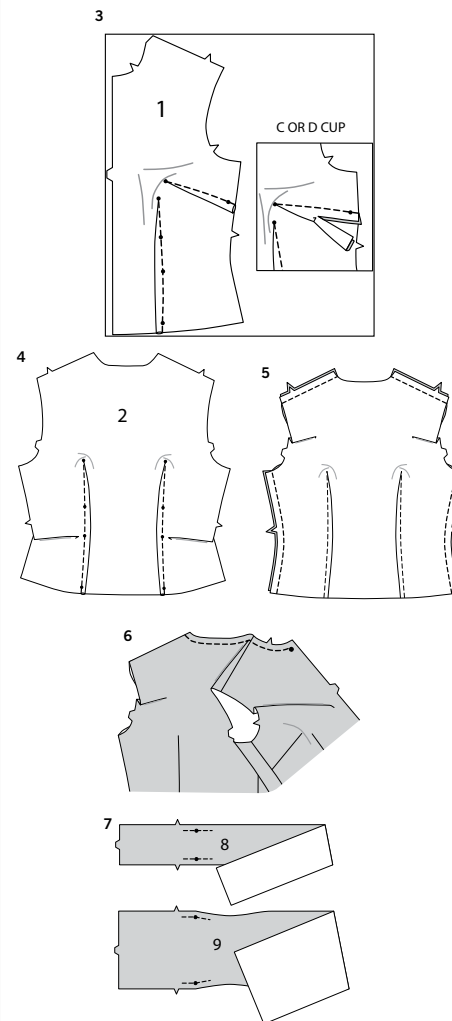
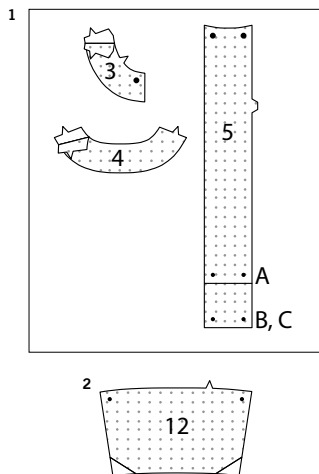
USE PIECES 1(A/B,C,D) 2 3 4 5(A/B,C,D) 9 10 11 12

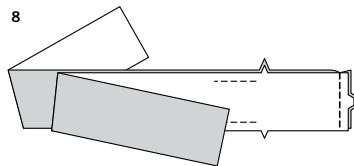
45" (115CM) WITH NAP
SIZES 8 10 12
CUT ONE OF PIECE 445" (115CM)
WITH NAP
SIZES 14 16 18 20 22 24 2660" (150CM)
WITH NAP
ALL SIZES

CUT ONE OF PIECE 4

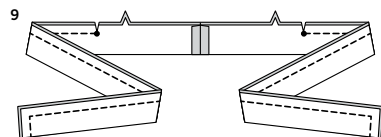
**INTERFACING C**
USE PIECES 3 4 5 1220" (51CM)
ALL SIZES

SEWING TUTORIALS

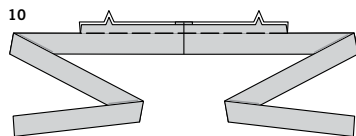
Build your skills viewing short, easy-to-follow videos at
[simplicity.com/sewingtutorials](https://www.simplicity.com/sewingtutorials)**Sewing Directions****FABRIC KEY**Sewing methods in **BOLD TYPE** have Sewing Tutorial Video available.
Scan QR CODE to watch videos:**SLEEVE** – See **Armholes/Sleeves**: “sewing a set in sleeve” video.**DART** – See **Darts**: “sewing double pointed dart” video.**DART** – See **Darts**: “sewing flat dart” video.**EASE/GATHER** – See **Gathering**: “sewing two row gathers” video.**NARROW HEM** – See **Hems**: “sewing narrow hems” video.**REINFORCE** – See **Machine Stitches**: “how to reinforce” video.**STAYSTITCH** – See **Machine Stitches**: “how to do stay-stitching” video.**STITCH IN THE DITCH** – see **Machine Stitches**: “how to stitch in the ditch” video.**UNDERSTITCH** – See **Machine Stitches**: “how to understitch” video.**FINISH** – See **Seams**: “how to finish seam allowances” video.**PATTERN PIECES WILL BE IDENTIFIED BY NUMBERS THE FIRST TIME THEY ARE USED.****STITCH SEAMS WITH RIGHT SIDES TOGETHER UNLESS OTHERWISE STATED.****NOTE:** Under each sub-heading, the first view will be illustrated, unless otherwise illustrated.**BLOUSE A, B, C****INTERFACING****1.** Fuse INTERFACING to wrong side of each matching FABRIC section, following manufacturer's instructions.**2. FOR VIEW C:** Trim corners of INTERFACING, as shown. Fuse interfacing to wrong side of each matching FABRIC section, following manufacturer's instructions.**FRONT AND BACK****3.** Stitch bust **DART** on FRONT (1A/B, 1C or 1D). Press darts downward. For 1C or 1D Cup: Trim darts to 5/8" (1.5cm). Press darts downward. Stitch lower **DART**. Press toward center.**4.** Stitch **DARTS** on BACK (2). Press toward center.**5.** Stitch back to front at shoulders and sides.**COLLAR B, C****6.** **STAYSTITCH** neck edge of blouse between large dots.**7. REINFORCE** COLLAR (8) or (9) through large dots, as shown.



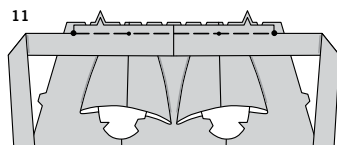
8. Stitch collar sections, RIGHT sides together at center back seam.



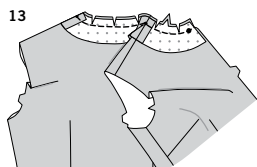
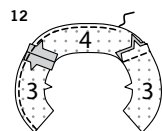
9. With RIGHT sides together, fold collar and tie ends in half lengthwise, matching notches and dots. Stitch tie ends, leaving open between large dots. Clip to large dots. Trim seams.



10. Turn collar RIGHT side out; press. Baste raw edges together between clips.



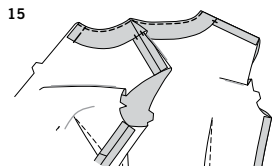
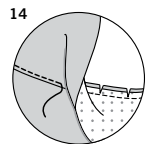
11. On outside, pin collar to neck edge, matching center backs, large dots and small dots to shoulder seams, clipping neck edge where necessary. Baste.



FRONT AND BACK FACING

12. Stitch FRONT FACING (3) sections to BACK FACING (4) at shoulders. **FINISH** lower edge of facing.

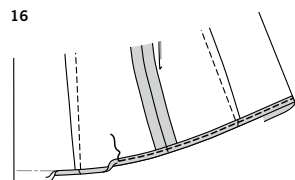
13. With RIGHT sides together, pin facing to neck edge (over collar for Views B, C), matching center backs, shoulder seams and dots, clipping facing as necessary. Stitch; trim seam.



14. **UNDERSTITCH** facing.

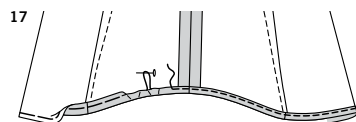
15. Turn facing to inside; press. Baste front edges together. Tack at shoulder seams.

HEM VIEW A

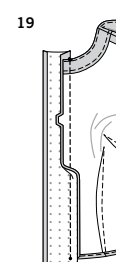


16. Press up 5/8" (1.5cm) hem on lower edge of blouse. To form **NARROW HEM**, tuck under raw edge to meet crease; press. Stitch hem in place.

VIEWS B, C



17. Stitch 1/4" (6mm) from lower edge of blouse, using long machine stitches, as shown. Turn up a 5/8" (1.5cm) hem on lower edge of blouse, turning under 1/4" (6mm) on raw edge. Pull thread to ease in fullness; stitch.

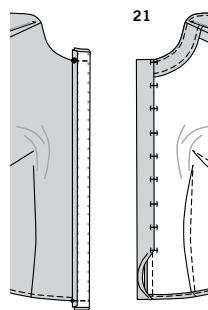


PLACKET

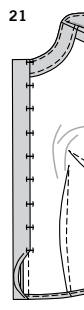
18. Press under 5/8" (1.5cm) on long unnotched edge of PLACKET (5A/B, 5C or 5D). Trim pressed edge to 3/8" (1cm).

19. Pin placket to blouse, matching notches and dots. Stitch; trim seam. Press seam toward placket.

20



21



22

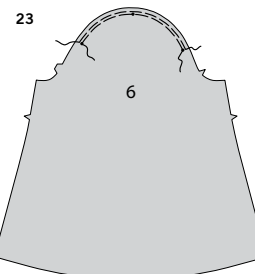


20. With RIGHT sides together, fold placket along foldline. Stitch across upper and lower edges; trim seams.

21. Turn placket to inside; press. Fold placket on foldline, **WRONG** sides together, having pressed edge just over seam on the **WRONG** side. Pin in place.

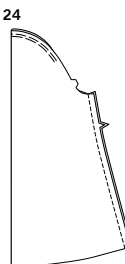
22. Working on the **RIGHT** side of the fabric, "**STITCH-IN-THE-DITCH**", (in the groove where the placket joins the fabric), being sure to catch in the underneath layer of placket in the stitching.

SLEEVE A, B

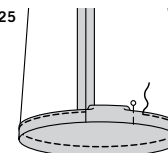


23. **GATHER** cap of SLEEVE (6) between outer dots, stitching along seam line and 1/4" (6mm) **INSIDE** seam line, using a long machine stitch.

24



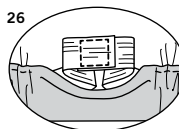
25



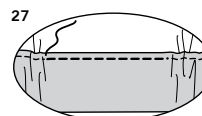
24. Stitch underarm seam.

25. Press 1" (2.5cm) on lower edge to **INSIDE**, forming casing. Press under 1/4" (6mm) on raw edge. Stitch close to pressed edge, leaving an opening to insert elastic. Cut two pieces of elastic, each using **ELASTIC GUIDE FOR SLEEVE (7)** pattern piece.

26



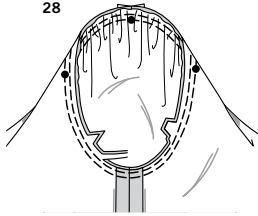
27



26. Insert elastic through casing. Overlap ends and hold with a safety pin. Try on sleeve and adjust to fit. Stitch ends of elastic together securely.

27. Stitch opening closed. Distribute fullness evenly. **TIP**-To secure elastic so it won't twist in wearing, stitch through all thicknesses of casing in the groove of seam.

28



28. With RIGHT sides together, pin **SLEEVE** into armhole with center small dot at shoulder seam, matching underarm seams, notches and remaining small dots. Adjust gathers; baste. Stitch. Stitch again 1/4" (6mm) away in seam allowance. Trim close to second stitching. Turn seams toward sleeve.

SLEEVE C

29. To **EASE** cap of **UPPER SLEEVE** (10) between outer dots, stitch along seam line and 1/4" (6mm) **INSIDE** seam line, using a long machine stitch.

30. Stitch underarm seam.

31. Stitch underarm seam of **LOWER SLEEVE** (11) above large dot. Back-stitch at large dot to reinforce seam.

32. Press under 5/8" (1.5cm) hem on slit opening edges. Press under 1/4" (6mm) on raw edge. Stitch, squaring stitching above opening.

33. **GATHER** lower sleeve along upper edge and lower edge between small dots.

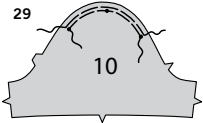
34. With RIGHT sides together, pin lower sleeve to upper sleeve, matching notches and seams. Adjust gathers; baste. Stitch. Stitch again 1/4" (6mm) away in seam allowance. Trim close to second stitching. Turn seams toward upper sleeve.

35. Turn in 5/8" (1.5cm) on notched edge of uninterfaced **CUFF** (12) sections. Trim pressed seam allowance to 3/8" (1cm). (Uninterfaced cuff sections will be used as facings.)

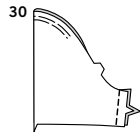
36. Pin interfaced Cuff (12) to cuff facing, RIGHT sides together. Stitch, leaving notched edge open; trim seam.

37. **UNDERSTITCH** lower edge of cuff facing as far as possible.

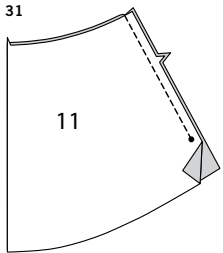
29



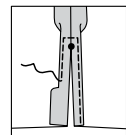
30



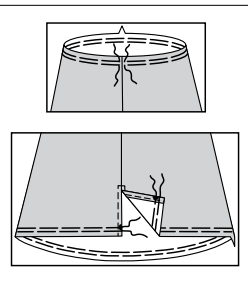
31



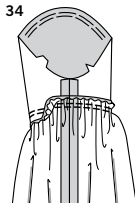
32



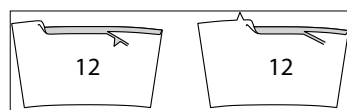
33



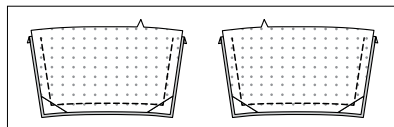
34



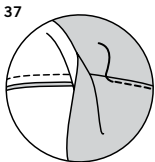
35



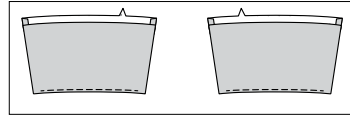
36



37

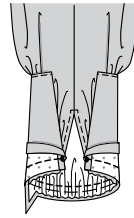


38

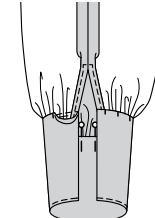


38. Turn cuff RIGHT side out; press.

39



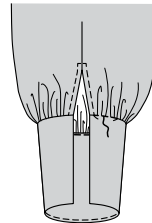
40



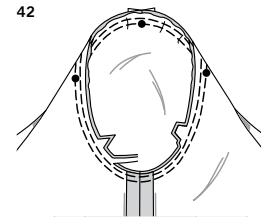
39. Pin cuff to lower sleeve, matching notches and small dots. Adjust gathers; baste. Stitch, keeping pressed edge free; trim seam. Press seams toward cuff, turning cuff down.

40. Pin pressed edge of cuff facing just over seam on the **WRONG** side.

41



42

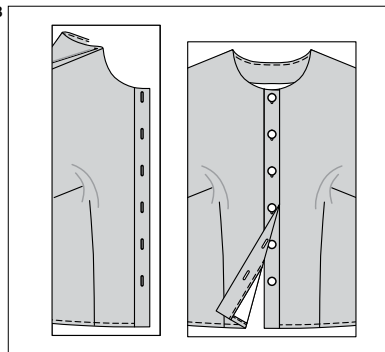


41. Working on the **RIGHT** side of the fabric, "**STITCH-IN-THE-DITCH**", (in the groove where the facing joins the fabric), being sure to catch in the underneath layer of facing in the stitching.

42. With **RIGHT** sides together, pin **SLEEVE** into armhole with center small dot at shoulder seam, matching underarm seams, notches and remaining small dots. Adjust ease; baste. Stitch. Stitch again 1/4" (6mm) away in seam allowance. Trim close to second stitching. Turn seams toward sleeve.

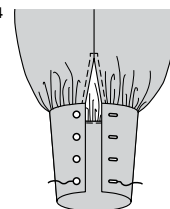
BUTTONHOLES AND BUTTONS

43



43. Make buttonholes in right placket at markings. Lap right placket over left, matching centers. Using buttonholes as guide, make button markings on left placket. Sew 5/8" (1.5cm) buttons at markings.

44



44. **FOR VIEW C:** Make buttonholes in cuff at markings. Sew 3/8" (1cm) buttons to cuff at markings.



Congrats!

You've completed your sewing adventure

SHARE YOUR LOOK



Post your pattern and tag us
[@simplicity_creative_group](#) and [#simplicitypatterns](#)
for a chance to be featured on our social media.

Look for more PDF patterns at [simplicity.com](https://www.simplicity.com)

Have a question or need help with your sewing project call us at
1-888-588-2700



Simplicity ©2024 a division of IG Design Group Americas Inc. • Atlanta, GA 30342 USA www.thedesigngroup.com • All Rights Reserved. www.simplicity.com • Made in the U.S.A. Fabriqué aux États-Unis.

To be used for individual private home use only and not for commercial or manufacturing purposes. • A usage privé seulement et non à des fins commerciales ou de production en série. • Para uso privado solamente, no se puede utilizar con propósitos de comercialización o de producción en serie.