

S3030

# Simplicity<sup>®</sup> COSTUMES



Designed and printed in USA.

Shop all the pattern brands you love @

**Simplicity<sup>®</sup>.com**

Average

**MEN'S COSTUME SUITS**

**Suggested Fabrics:** Brocade, Crepe, Dupioni, Gabardine, Satin, Wool Types. **Contrast A,B also in Tissue Lame. Lining A,B:** Lining Fabric. **Interfacing:** Medium weight Fusible.

**Notions:** A,B: One 1/2" (2.2cm) button, pair of shoulder pads. **Also for A:** Twenty five 3/8" (1cm) half-ball buttons or button forms to cover. **Also for B:** Twelve 1/4" (1.5cm) buttons, 6 1/2 yds. (6.3m) of 1 1/4" - 2" (5cm) motif trim (opt.), assorted flat-back rhinestones (opt.). **C:** 7" (18cm) zipper (cut to fit), one hook closure.

|                 |    |    |    |    |    |    |    |    |    |    |
|-----------------|----|----|----|----|----|----|----|----|----|----|
| <b>Sizes</b>    | 34 | 36 | 38 | 40 | 42 | 44 | 46 | 48 | 50 | 52 |
| <b>European</b> | 44 | 46 | 48 | 50 | 52 | 54 | 56 | 58 | 60 | 62 |

|               |       |       |       |       |       |       |       |       |       |       |      |
|---------------|-------|-------|-------|-------|-------|-------|-------|-------|-------|-------|------|
| <b>Coat A</b> |       |       |       |       |       |       |       |       |       |       |      |
| 45**          | 4 1/2 | 4 1/2 | 5     | 5     | 5     | 5     | 5 1/2 | 5 1/2 | 5 1/2 | 5 1/2 | Yds. |
| 60**          | 3 1/2 | 3 1/2 | 3 1/2 | 3 1/2 | 3 1/2 | 3 1/2 | 3 1/2 | 3 1/2 | 4     | 4 1/2 | "    |
| 115cm*        | 4.1   | 4.5   | 4.6   | 4.6   | 4.6   | 4.6   | 4.7   | 4.7   | 4.7   | 4.7   | m    |
| 150cm*        | 3.2   | 3.2   | 3.2   | 3.2   | 3.2   | 3.2   | 3.2   | 3.5   | 3.5   | 3.7   | "    |

|   |       |       |       |       |       |       |       |       |       |       |      |
|---|-------|-------|-------|-------|-------|-------|-------|-------|-------|-------|------|
| <b>Contrast (Collar, Lower Front, Lower Back)</b> |       |       |       |       |       |       |       |       |       |       |      |
| 45**  | 3 1/4 | 3 1/4 | 3 1/2 | 3 1/2 | 3 1/2 | 3 1/2 | 3 1/2 | 3 1/2 | 3 1/2 | 3 1/2 | Yds. |
| 60**  | 2 1/2 | 2 1/2 | 2 1/2 | 2 1/2 | 2 1/2 | 2 1/2 | 2 1/2 | 2 1/2 | 2 3/4 | 2 3/4 | "    |
| 115cm*  | 3.0   | 3.0   | 3.1   | 3.1   | 3.2   | 3.2   | 3.2   | 3.2   | 3.2   | 3.2   | m    |
| 150cm*  | 2.3   | 2.3   | 2.3   | 2.3   | 2.3   | 2.3   | 2.4   | 2.4   | 2.5   | 2.5   | "    |

**Interfacing:** 60" - 4 3/4 yds. (150cm - 4.0m)

|                   |       |       |       |       |       |       |       |       |       |       |      |
|-------------------|-------|-------|-------|-------|-------|-------|-------|-------|-------|-------|------|
| <b>Lining A,B</b> |       |       |       |       |       |       |       |       |       |       |      |
| 45**              | 1 1/2 | 1 1/2 | 1 1/2 | 1 1/2 | 1 1/2 | 1 1/2 | 1 1/2 | 1 1/2 | 1 1/2 | 1 1/2 | Yds. |
| 115cm**           | 1.4   | 1.4   | 1.4   | 1.4   | 1.5   | 1.5   | 1.5   | 1.5   | 1.6   | 1.6   | m    |

|               |       |       |       |       |       |       |       |       |       |       |      |
|---------------|-------|-------|-------|-------|-------|-------|-------|-------|-------|-------|------|
| <b>Coat B</b> |       |       |       |       |       |       |       |       |       |       |      |
| 45**          | 4 1/2 | 5     | 5 1/2 | 5 1/2 | 5 1/2 | 5 1/2 | 5 1/2 | 5 1/2 | 5 1/2 | 5 1/2 | Yds. |
| 60**          | 3 1/2 | 3 1/2 | 3 1/2 | 3 1/2 | 4     | 4     | 4     | 4 1/2 | 4 1/2 | 4 1/2 | "    |
| 115cm*        | 4.5   | 4.6   | 4.7   | 4.7   | 4.7   | 4.9   | 4.9   | 5.0   | 5.0   | 5.0   | m    |
| 150cm*        | 3.4   | 3.5   | 3.5   | 3.5   | 3.7   | 3.7   | 3.7   | 3.7   | 3.8   | 3.8   | "    |

|  |       |       |       |       |       |       |       |       |       |       |      |
|--|-------|-------|-------|-------|-------|-------|-------|-------|-------|-------|------|
| <b>Contrast (Collar, Lower Front, Sleeve Front, Sleeve Back)</b> |       |       |       |       |       |       |       |       |       |       |      |
| 45**   | 3 1/2 | 3 1/4 | 3 1/4 | 3 1/4 | 3 1/2 | 3 1/2 | 3 1/2 | 3 1/2 | 3 1/2 | 4     | Yds. |
| 60**   | 3 1/2 | 3 1/2 | 3 1/2 | 3 1/2 | 3 1/2 | 3 1/2 | 3 1/2 | 3 1/2 | 3 1/2 | 3 1/2 | "    |
| 115cm*   | 2.9   | 3.0   | 3.0   | 3.1   | 3.2   | 3.3   | 3.4   | 3.5   | 3.5   | 3.7   | m    |
| 150cm*   | 2.9   | 2.9   | 2.9   | 2.9   | 2.9   | 2.9   | 2.9   | 3.0   | 3.0   | 3.0   | "    |

**Interfacing:** 60" - 4 3/4 yds. (150cm - 4.0m)

|                |       |       |       |       |       |       |       |       |       |       |      |
|----------------|-------|-------|-------|-------|-------|-------|-------|-------|-------|-------|------|
| <b>Pants C</b> |       |       |       |       |       |       |       |       |       |       |      |
| 45**           | 2 1/4 | 2 1/4 | 2 1/2 | 2 1/2 | 2 1/2 | 2 1/2 | 2 1/2 | 2 1/2 | 2 1/2 | 2 1/2 | Yds. |
| 60**           | 1 3/4 | 1 3/4 | 1 3/4 | 1 3/4 | 2     | 2 1/4 | 2 1/4 | 2 1/4 | 2 1/4 | 2 1/4 | "    |
| 115cm*         | 2.1   | 2.1   | 2.2   | 2.3   | 2.3   | 2.4   | 2.4   | 2.4   | 2.4   | 2.4   | m    |
| 150cm*         | 1.6   | 1.6   | 1.7   | 1.7   | 1.8   | 2.1   | 2.1   | 2.1   | 2.2   | 2.2   | "    |

**Interfacing:** 20" - 1/4 yd. (51cm - 0.8m)

**FINISHED GARMENT MEASUREMENTS (Includes Design and Wearing Ease)**

|                  |      |      |       |       |       |       |       |       |       |       |      |
|------------------|------|------|-------|-------|-------|-------|-------|-------|-------|-------|------|
| <b>A,B Chest</b> | 37   | 39   | 41    | 43    | 45    | 47    | 49    | 51    | 53**  | 55    | Ins. |
|                  | (94) | (99) | (104) | (109) | (114) | (119) | (124) | (130) | (135) | (140) | (cm) |

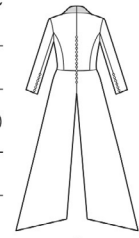
|                  |      |      |      |      |      |       |       |       |       |       |      |
|------------------|------|------|------|------|------|-------|-------|-------|-------|-------|------|
| <b>A,B Waist</b> | 30   | 32   | 34   | 36   | 38   | 40    | 42    | 44    | 46    | 48    | Ins. |
|                  | (76) | (81) | (86) | (91) | (97) | (102) | (107) | (112) | (117) | (122) | (cm) |

|              |      |      |       |       |       |       |       |       |       |       |      |
|--------------|------|------|-------|-------|-------|-------|-------|-------|-------|-------|------|
| <b>C Hip</b> | 37   | 39   | 41    | 43    | 45    | 47    | 49    | 51    | 53    | 55    | Ins. |
|              | (94) | (99) | (104) | (109) | (114) | (119) | (124) | (130) | (135) | (140) | (cm) |

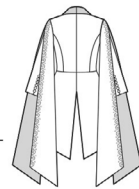
|                        |      |        |      |        |      |        |      |        |      |        |      |
|------------------------|------|--------|------|--------|------|--------|------|--------|------|--------|------|
| <b>Width, each leg</b> |      |        |      |        |      |        |      |        |      |        |      |
| <b>Pants C</b>         | 13   | 13 1/2 | 14   | 14 1/2 | 15   | 15 1/2 | 16   | 16 1/2 | 17   | 17 1/2 | Ins. |
|                        | (33) | (34)   | (36) | (37)   | (38) | (39)   | (41) | (42)   | (43) | (44)   | (cm) |

|  |        |        |        |       |        |        |        |       |        |        |      |
|--|--------|--------|--------|-------|--------|--------|--------|-------|--------|--------|------|
| <b>Finished side length from waist</b> |        |        |        |       |        |        |        |       |        |        |      |
| <b>Pants C (sits 1" below waist)</b>   | 42 1/4 | 42 1/2 | 42 3/4 | 43    | 43 1/4 | 43 1/2 | 43 3/4 | 44    | 44 1/4 | 44 1/2 | Ins. |
|  | (107)  | (108)  | (109)  | (109) | (110)  | (110)  | (111)  | (112) | (112)  | (113)  | (cm) |

\*with nap \*\*without nap



A



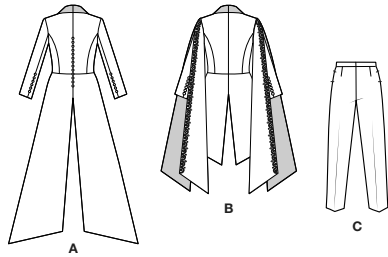
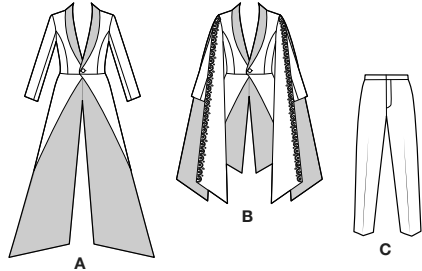
B



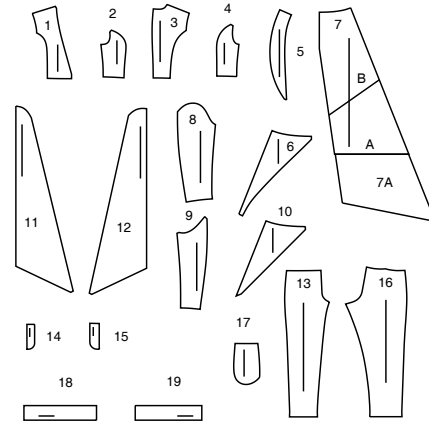
C

# Simplicity®

Thank you for purchasing this Simplicity pattern. We made every effort to provide you with a high quality product.



19 PIECES



- 1 FRONT - A,B
- 2 SIDE FRONT - A,B
- 3 BACK - A,B
- 4 SIDE BACK - A,B
- 5 COLLAR - A,B
- 6 LOWER FRONT - A
- 7 LOWER BACK - A,B
- 7A EXTENSION
- 8 UPPER SLEEVE - A,B
- 9 UNDER SLEEVE - A,B

- 10 LOWER FRONT - B
- 11 SLEEVE FRONT - B
- 12 SLEEVE BACK - B
- 13 FRONT - C
- 14 RIGHT FLY - C
- 15 LEFT FLY FACING - C
- 16 BACK - C
- 17 SIDE POCKET - C
- 18 RIGHT WAISTBAND - C
- 19 LEFT WAISTBAND - C

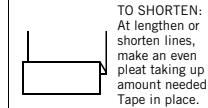
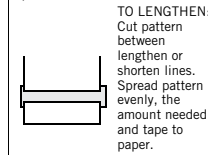
## General Directions

### The Pattern

- SYMBOLS**
- GRAIN LINE: Place on straight grain of fabric parallel to selvage
  - PLACE SOLID LINE on fold of fabric.
  - CENTER FRONT OR BACK of garment.
  - NOTCHES
  - DOTS
  - CUTTING LINE
  - LENGTHEN OR SHORTEN LINES

SEAM ALLOWANCE: 5/8" (1.5cm) unless otherwise stated is included but not printed on MULTI-SIZE PATTERNS. Mark your size with colored felt tip pen. See chart on tissue for how to use MULTI-SIZE PATTERNS.

**ADJUST IF NEEDED**  
Make adjustments before placing pattern on fabric.



When lengthen or shorten lines are not given, make adjustments at lower edge of pattern.

### Cutting/Marking

**BEFORE CUTTING:**  
PRESS pattern pieces with a warm dry iron. PRE-SHRINK fabric by pre-washing washables or steam-pressing non-washables.

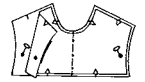
CIRCLE your cutting layout.  
PIN pattern to fabric as shown in Cutting Layouts.

- FOR DOUBLE THICKNESS: Fold fabric with RIGHT sides together.
- FOR SINGLE THICKNESS: Place fabric RIGHT side up.
- FOR PILE, SHADED OR ONE WAY DESIGN FABRICS: Use "with nap" layouts

**AFTER CUTTING:**  
Transfer markings to WRONG side of fabric before removing pattern. Use pin and chalk method or dressmaker's tracing paper and wheel.

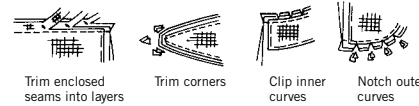
#### To Quick Mark:

- Snip edge of fabric to mark notches, ends of fold lines and center lines.
- Pin mark dots.



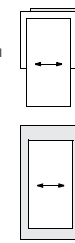
### Sewing

- SEW garment following Sewing Directions.
- PIN or machine-baste seams matching notches.
- STITCH 5/8" (1.5 cm) seams unless otherwise stated.
- PRESS seams open unless otherwise indicated clipping when necessary so seams will lie flat.
- TRIM seams to reduce bulk, as shown below.



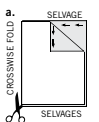
### SPECIAL CUTTING NOTES

★ If layout shows a piece extending past fold, cut out all pieces except piece that extends.

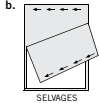


Open out fabric to single thickness. Cut extending piece on RIGHT side of fabric in position shown.

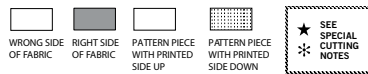
✱ Mark small arrows along both selvages indicating direction of nap or design. Fold fabric crosswise with RIGHT sides together, and cut along fold (a).



Turn one fabric layer around so arrows on both layers go in the same direction. Place RIGHT sides together (b).



## Cutting Layouts



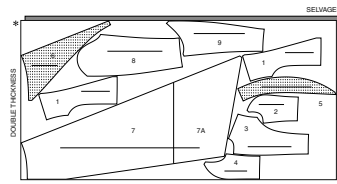
POSITION OF PATTERN PIECES MAY VARY SLIGHTLY ACCORDING TO YOUR PATTERN SIZE

**NOTE:** BEFORE CUTTING FABRIC JOIN PIECE IN PARENTHESIS TO CORRESPONDING PIECE FOLLOWING INSTRUCTIONS ON TISSUE PATTERN.

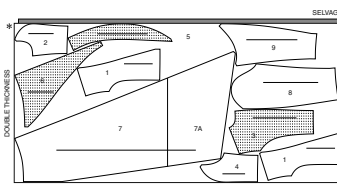
### COAT A

USE PIECES 1 2 3 4 5 6 7 (7A) 8 9

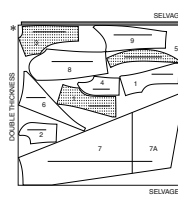
45" (115CM) WITH NAP  
SIZES 34 36 38 40 42 44



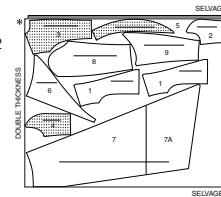
45" (115CM) WITH NAP  
SIZES 46 48 50 52



60" (150CM) WITH NAP  
SIZES 34 36 38 40 42 44



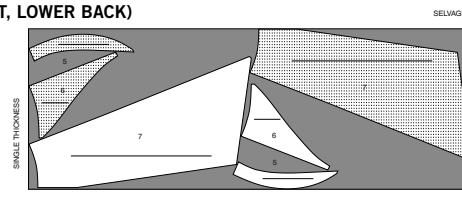
60" (150CM) WITH NAP  
SIZES 46 48 50 52



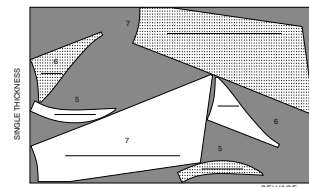
### CONTRAST (COLLAR, LOWER FRONT, LOWER BACK)

USE PIECES 5 6 7 (7A)

45" (115CM) WITH NAP  
ALL SIZES



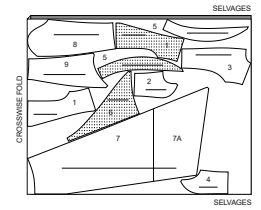
60" (150CM) WITH NAP  
ALL SIZES



### INTERFACING

USE PIECES 1 2 3 4 5 6 7 (7A) 8 9

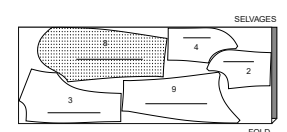
60" (150CM) ALL SIZES



### LINING A,B

USE PIECES 2 3 4 8 9

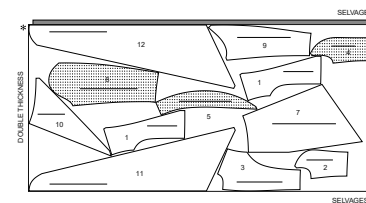
45" (115CM) WITHOUT NAP  
ALL SIZES



### B COAT

USE PIECES 1 2 3 4 5 7 8 9 10 11 12

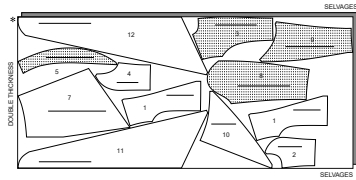
45" (115CM) WITH NAP  
SIZES 34 36 38 40 42



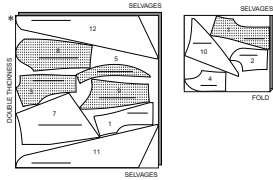
# S3030

2 of 4

45" (115CM)  
WITH NAP  
SIZES 44 46 48 50 52



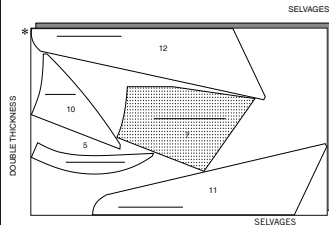
60" (150CM)  
WITH NAP  
ALL SIZES



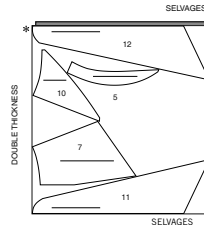
## CONTRAST (COLLAR, LOWER FRONT, SLEEVE FRONT, SLEEVE BACK)

USE PIECES 5 7 10 11 12

45" (115CM)  
WITH NAP  
ALL SIZES



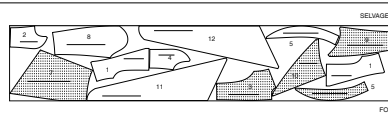
60" (150CM)  
WITH NAP  
ALL SIZES



## INTERFACING

USE PIECES 1 2 3 4 5 7  
8 9 10 11 12

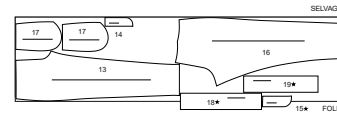
60" (150CM)  
ALL SIZES



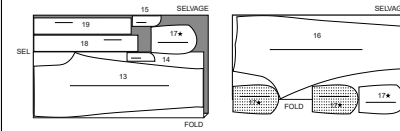
## PANTS C - SITS 1" (2.5CM) BELOW WAIST

USE PIECES 13 14 15 16 17 18 19

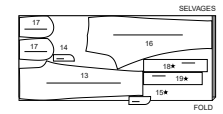
45" (115CM)  
WITH NAP  
SIZES 34 36 38 40  
CUT ONE OF PIECE 19



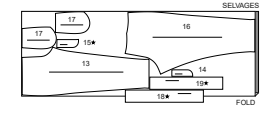
45" (115CM)  
WITH NAP  
SIZES 42 44 46 48 50 52



60" (150CM)  
WITH NAP  
SIZES 34 36 38 40 42  
CUT ONE OF PIECES 18 19



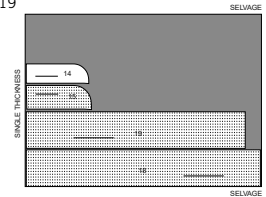
60" (150CM)  
WITH NAP  
SIZES 44 46 48 50 52  
CUT ONE OF PIECES 15 19



## INTERFACING

USE PIECES 14 15 18 19

20" (51CM)  
ALL SIZES

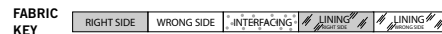


### SEWING TUTORIALS



Build your skills viewing short, easy-to-follow videos at [simplicity.com/sewingtutorials](http://simplicity.com/sewingtutorials)

## Sewing Directions



Read **General Directions** on page 1 before you begin.

Sewing methods in **BOLD TYPE** have Sewing Tutorial Video available. Scan QR CODE to watch videos:

- DART** - See [sewing flat dart](#) video.
- EASE/GATHER** - See [sewing two row gathers](#) video.
- EDGESTITCH** - See [how to edgestitch](#) video.
- FINISH** - See [how to finish seam allowances](#) video.
- SLIPSTITCH** - See [how to slip stitch](#) video.
- STAYSTITCH** - See [how to do stay-stitching](#) video.
- UNDERSTITCH** - See [how to understitch](#) video.

**PATTERN PIECES WILL BE IDENTIFIED BY NUMBERS THE FIRST TIME THEY ARE USED.**

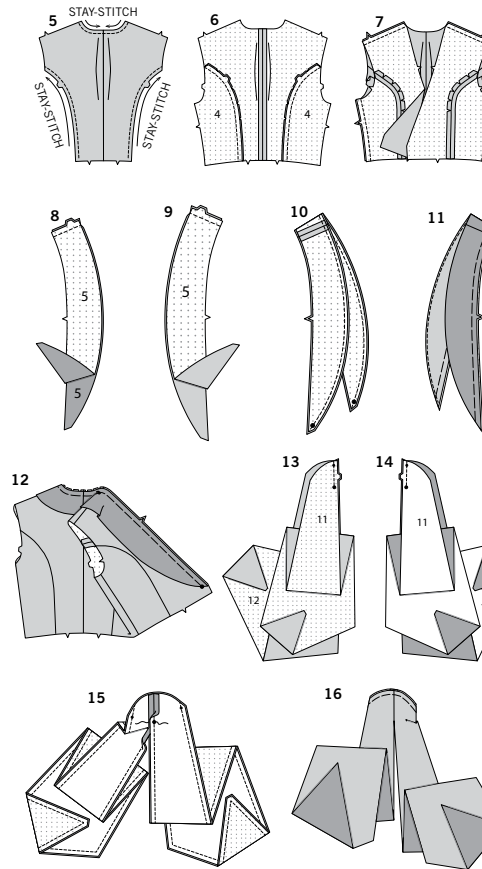
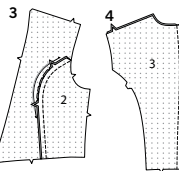
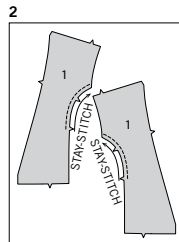
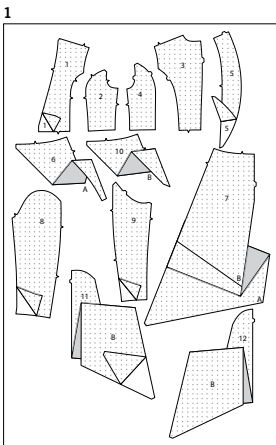
**STITCH 5/8"(1.5CM) SEAMS WITH RIGHT SIDES TOGETHER UNLESS OTHERWISE STATED.**

### COAT A, B INTERFACING

**1.** Pin INTERFACING to wrong side of each matching FABRIC section. Fuse, following manufacturer's instructions.

### FRONT AND BACK

- STAYSTITCH** side edge of two FRONT (1) sections in direction of arrows, as shown.  
**NOTE:** Remaining front sections will be used as facing.
- With **RIGHT** sides together, pin **SIDE FRONT** (2) to side edge of front, clipping front where necessary. Baste. Stitch.
- With **RIGHT** sides together, pin **BACK** (3) sections together at center back seam, matching notches. Stitch.

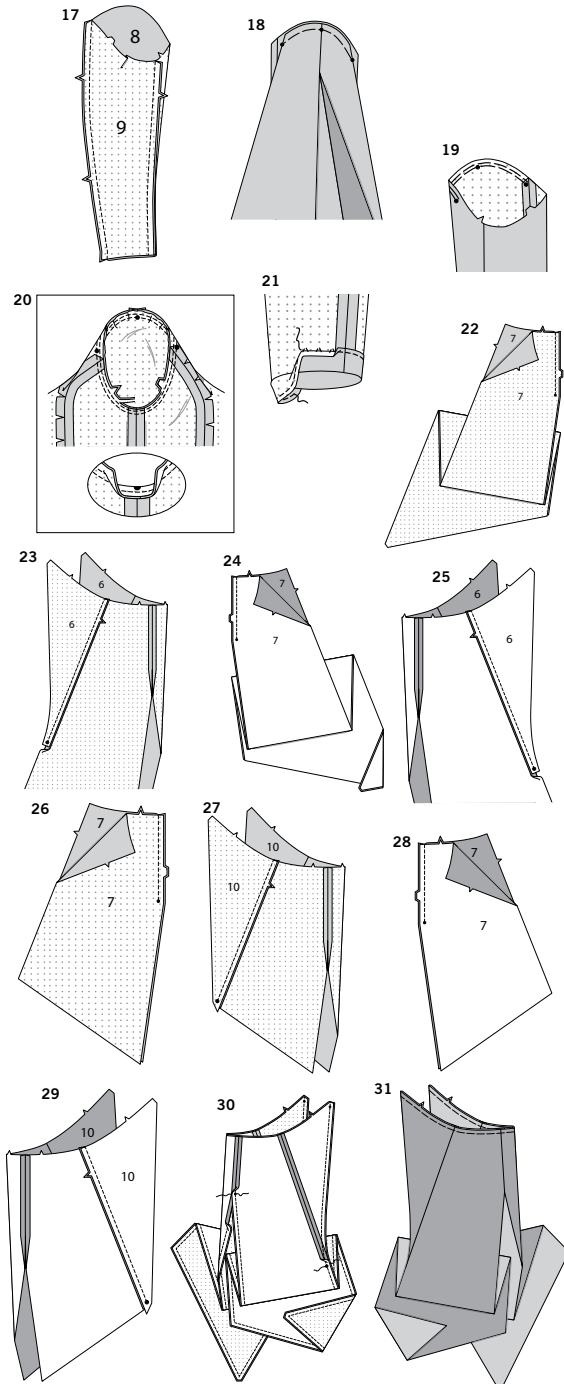


- STAYSTITCH** neck and side edges of back in direction of arrows.
- With **RIGHT** sides together, pin **SIDE BACK** (4) to side edges of back, clipping back where necessary. Baste. Stitch.
- Stitch fronts to back at shoulders and side edges.
- Stitch **COLLAR** (5) (Contrast) sections together at center back seam
- For facing, stitch collar (Fabric) sections together at center back seam.
- With **RIGHT** sides together, pin collar to collar facing, having raw edges even, matching large dots. Stitch unnotched edge in a 3/8"(1cm) seam. Trim seam.  
**UNDERSTITCH** facing.
- Turn **RIGHT** side out. Press. Baste raw edges.
- Pin collar to neck edge, contrast side up, placing small dots at shoulder seams, matching large dots, clipping neck edge to stay-stitching where necessary. Baste.

### SLEEVE

#### FOR VIEW B

- With **RIGHT** sides together, pin **SLEEVE FRONT** (11) (Fabric) to **SLEEVE BACK** (12) (Fabric) at front edge, matching dots and notches. Stitch, leaving open below large dot, as shown.
- Stitch sleeve **CONTRAST** sections together in same manner.
- With **RIGHT** sides together, pin sleeve (fabric) to sleeve (contrast), matching small and large dots. Stitch side, lower and front edges, breaking stitching at large dot. Trim seams. Clip corners.
- Turn **RIGHT** side out. Press. Baste raw edges.

**CONTINUE AS FOLLOWS FOR VIEWS A, B**

**17.** With RIGHT sides together, pin UNDER SLEEVE (9) to UPPER SLEEVE (8) at back edge, matching notches. Stitch. Stitch remaining sleeve seam.

**FOR VIEW B**

**18.** With RIGHT sides up, pin outer sleeve section to sleeve, matching small dots. Baste.

**CONTINUE AS FOLLOWS FOR VIEWS A, B**

**19.** EASE upper edge of sleeve between outer small dots.

**20.** Turn sleeve RIGHT side out. Hold coat WRONG side out with armhole toward you. With RIGHT sides together, pin sleeve to armhole edge placing center small dot at shoulder seam and large dot at underarm seam, matching notches and remaining small dots. Pull up ease stitches on upper edge to fit; baste. Stitch. Stitch again 1/4"(6mm) from first stitching. Trim seam below notches close to stitching. Press only seam allowance, shrinking out fullness.

**21.** Press up hem. To FINISH the raw edge, stitch under 1/4"(6mm) OR zig-zag over edge OR overlock/serge edge. Slip-stitch hem in place.

**LOWER FRONT AND BACK****FOR VIEW A**

**22.** With RIGHT sides together, pin LOWER BACK (7) (Fabric) sections together at center back seam, matching notches and small dots. Stitch, leaving open below lower small dot. **NOTE:** Contrast sections will be used as lining.

**23.** With RIGHT sides together, pin LOWER FRONT (6) (Fabric) sections to side edges of lower back, matching notches and small dots. Stitch to large dot. **NOTE:** Contrast sections will be used as lining.

**24.** With RIGHT sides together, pin lower back (7) LINING sections together at center back seam, matching notches and small dots. Stitch, leaving open below lower small dot.

**25.** With RIGHT sides together, pin lower front (6) LINING sections to side edges of lower back lining, matching notches and small dots. Stitch to large dot.

**FOR VIEW B**

**26.** With RIGHT sides together, pin LOWER BACK (7) (Fabric) sections together at center back seam, matching notches and small dots. Stitch, leaving open below small dot. **NOTE:** Contrast sections will be used as lining.

**27.** With RIGHT sides together, pin LOWER FRONT (10) (Fabric) sections to side edges of lower back, matching notches and small dots. Stitch to large dot. **NOTE:** Contrast sections will be used as lining.

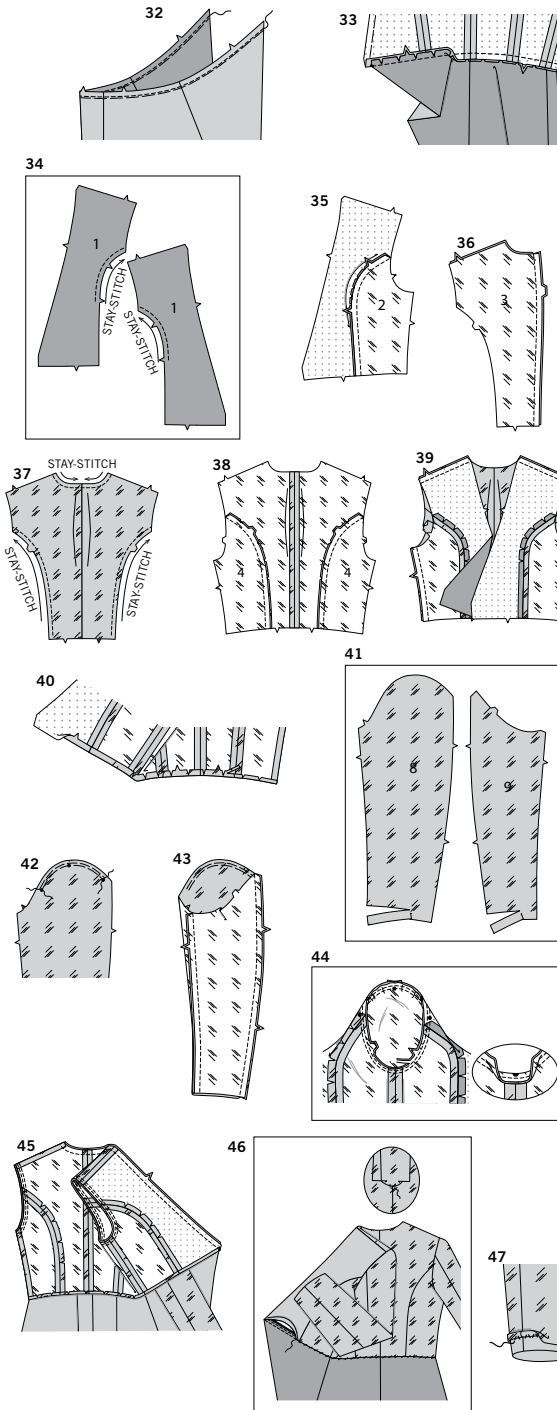
**28.** With RIGHT sides together, pin lower back LINING (7) sections together at center back seam, matching notches and small dots. Stitch, leaving open below small dot.

**29.** With RIGHT sides together, pin lower front (10) LINING sections to side edges of lower back lining, matching notches and small dots. Stitch to large dot.

**CONTINUE AS FOLLOWS FOR VIEWS A, B**

**30.** With RIGHT sides together, pin lower front and back lining to lower front and back, matching centers, symbols and notches. Stitch front, lower and back edges, breaking stitching at large dots on front and at small dots on center back. Trim seams and corners; clip curves.

**31.** Turn RIGHT side out. Press. Baste raw edges.



**32.** STAYSTITCH upper edge.

**33.** With RIGHT sides together, pin lower front and back to lower edge of front and back, matching small dots, notches and side seams, clipping lower front and back to stay-stitching where necessary. Baste. Stitch. Press seam up.

**FACING AND LINING**

**34.** STAYSTITCH side edge of front (1) FACING in direction of arrows to lower notch, as shown.

**35.** With RIGHT sides together, pin side front LINING (2) to side edge of front facing, clipping front facing where necessary. Baste. Stitch.

**36.** With RIGHT sides together, pin back LINING (3) sections together at center back seam, matching notches. Stitch.

**37.** STAYSTITCH neck and side edges of back lining in direction of arrows.

**38.** With RIGHT sides together, pin side back LINING (4) to side edges of back lining, clipping back lining where necessary. Baste. Stitch.

**39.** Stitch front linings to back lining at shoulders and side edges.

**40.** Press under seam allowance on lower edge of facing and lining. Trim pressed seam allowance to 3/8"(1cm).

**41.** Trim 1"(2.5cm) from lower edge of upper sleeve LINING (8) and under sleeve LINING (9) sections.

**42.** EASE upper edge of upper sleeve lining between outer small dots.

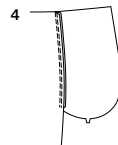
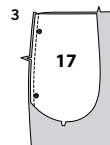
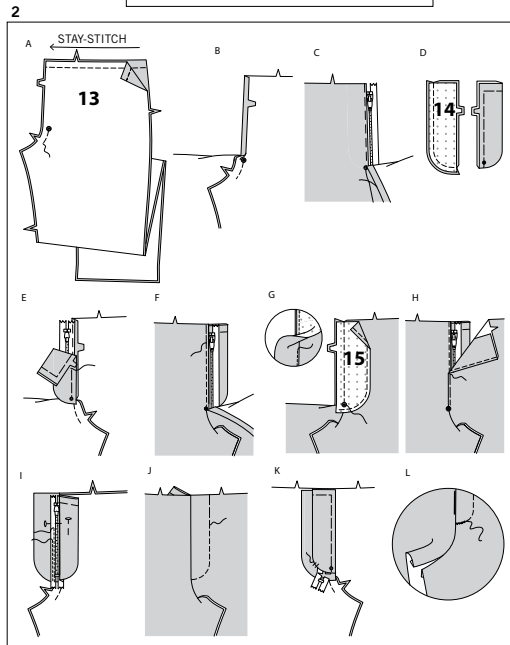
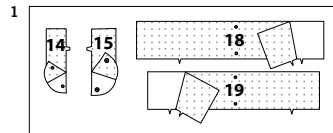
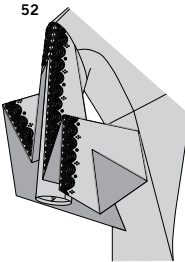
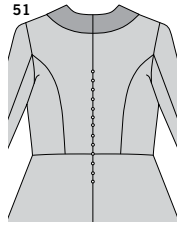
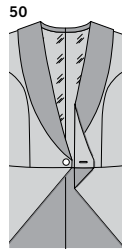
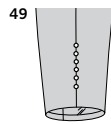
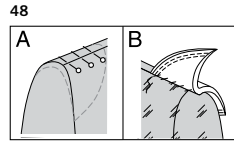
**43.** With RIGHT sides together, pin under sleeve lining to upper sleeve at lining at back edge, matching notches. Stitch. Stitch remaining sleeve lining seam.

**44.** Turn sleeve lining RIGHT side out. Hold coat lining WRONG side out with armhole toward you. With RIGHT sides together, pin sleeve lining to armhole edge placing center small dot at shoulder seam and large dot at underarm seam, matching notches and remaining small dots. Pull up ease stitches on upper edge to fit; baste. Stitch. Stitch again 1/4"(6mm) from first stitching. Trim seam below notches close to stitching. Press only seam allowance, shrinking out fullness.

**45.** With RIGHT sides together, pin facing and lining to coat, matching centers, symbols and notches. Stitch upper and front edges. Trim seam; clip curves.

**46.** Turn jacket and lining RIGHT side out. Press. Slip sleeves in place. Slip hand through opening in lining. Tack armhole and underarm seams of coat and lining together loosely. **SLIPSTITCH** pressed edge over seam.

**47.** Press under 1/2"(1.3cm) on lower edge of sleeve lining. **SLIPSTITCH** pressed edge of sleeve lining 1"(2.5cm) above lower edge of sleeve. Allow lining to drop. Press the folded edge in place.



## FINISHING

**48.** (A) Try on coat for shoulder pad placement.  
(B) Pin pad to coat, extending outer edge about 5/8" (1.5cm) beyond armhole seam.  
Sew pad to shoulder lining seam; tack ends to armhole seam.

**49.** Sew buttons to sleeves at small dots.

**50.** Make buttonhole in left front at markings. Lap opening edges, matching centers. Make button marking in right front. Sew button at marking.

## FOR VIEW A

**51.** Sew buttons to center back of coat at small dots, as shown.

## FOR VIEW B

**52.** On OUTSIDE, pin motif trim to outer sleeve along front opening edges, as shown, turning under ends if necessary. Sew in place.  
Apply rhinestones to outer sleeve, as shown, following manufacturer's instructions.

## PANTS C

## INTERFACING

**1.** Pin INTERFACING to wrong side of each matching FABRIC section. Fuse, following manufacturer's instructions.

## FRONT AND BACK

**2.** STAYSTITCH upper edge of FRONT (13) in direction of arrows.

## Construct fly front as follows:

**A-** Stitch FRONT (13) sections together at center front between large dot and notch.

**B-** Turn in right front opening edge along foldline; press. **C-** Place closed zipper (face up) under right front opening edge, having pressed edge close to zipper teeth and zipper stop at small dot. Using a zipper foot, baste close to pressed edge.

**D-** Stitch RIGHT FLY (14) sections together in a 3/8" (1cm) seam, along outer unnotched edge, as shown. Trim. Turn. Press. Baste raw edges.

**E-** On inside, pin right fly to right front opening edge (over zipper), matching notches and small dots, having raw edges even. Baste along previous basting for zipper. **F-** On outside, using a zipper foot, stitch close to pressed edge of front through all layers.

**G-EDGE FINISH** outer edge of LEFT FLY FACING (15). Pin fly facing to left front opening edge, matching notches, and large dots. Stitch, ending at large dot. Trim. UNDERSTITCH fly facing. Turn facing to inside.

**H-** Lap left front over right, matching centers. Baste close to edge through all thicknesses.

**I-** Pin right fly out of the way. Open out fly facing. Pin remaining zipper tape to fly facing, keeping left front free. Using a zipper foot, stitch in place close to zipper teeth and along center of zipper tape.

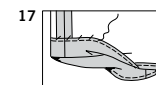
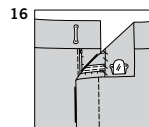
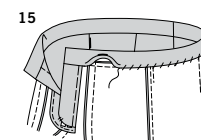
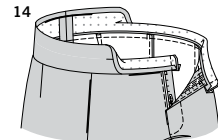
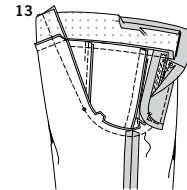
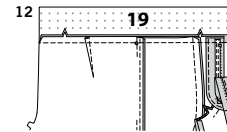
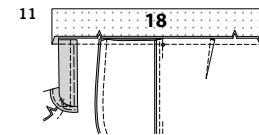
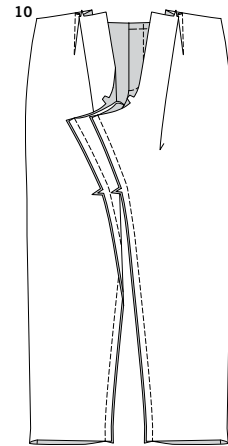
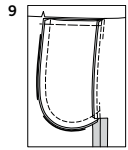
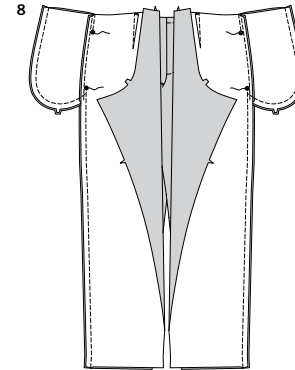
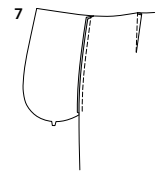
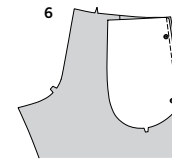
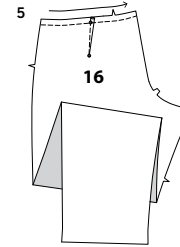
**J-** Turn facing down. On outside, stitch left front along stitching line, keeping right underlap free.

**K-** Turn right fly back in place. On inside, hand tack fly and facing together at lower edge, as shown. Trim away excess zipper tape even with lower edge of fly, if needed. **L-** If desired, on outside, machine-stitch a bar tack across lower end of fly through all thicknesses.

**3.** With RIGHT sides together, pin one SIDE POCKET (17) to front at each side, matching large dots, having raw edges even. Stitch in 3/8" (1cm) seam. UNDERSTITCH pocket.

**4.** Press seam toward pocket, pressing pocket out.

## STAY-STITCH



**5.** Stitch dart in BACK (16). Press dart toward center. STAYSTITCH upper edge in direction of arrows.

**6.** With RIGHT sides together, pin one remaining side pocket to each back section at side, matching large dots, having raw edges even. Stitch in 3/8" (1cm) seam.

**7.** Press seam toward pocket, pressing pocket out.

**8.** Pin front to back at side seams, matching large dots. Stitch side seams, leaving an opening between large dots. Stitch pocket edges together to side seam.

**9.** Clip back seam allowances below pockets. Press seams open below clips. Press pockets toward front. Baste upper edges.

**10.** Stitch front and back together at inner leg edge.

## WAISTBAND AND FINISHING

**11.** With RIGHT sides together, pin RIGHT WAISTBAND (18) to RIGHT front and back, matching centers and placing small dot at side seam. Stitch. Trim seam. Press band out, pressing seam toward band.

**12.** With RIGHT sides together, pin LEFT WAISTBAND (19) to LEFT front and back, matching centers and placing small dot at side seam. Stitch. Trim seam. Press band out, pressing seam toward band.

**13.** Insert one leg INSIDE the other. With RIGHT sides together, pin remainder of center seam, matching inner leg seams, small dots and notches. Baste from notch in front to small dot in back along 5/8" (1.5cm) seam line and from small dot to edge of waistband along center back seam line. Try on pants and if needed adjust to fit at the center back seam above small dot. Stitch center back seam. Stitch again over first stitching to reinforce seam. Press under seam allowance on long unnotched edge of waistband. Trim pressed seam allowance to 3/8" (1cm).

**14.** With RIGHT sides together, fold waistband along foldline. Stitch ends. Trim seams.

**15.** Turn waistband RIGHT side out. Press. SLIPSTITCH pressed edge over seam.

**16.** On INSIDE, sew hook to LEFT waistband opening edge, as shown.  
On OUTSIDE, sew bar to RIGHT waistband, opposite hook, as shown.

**17.** Press up hem. To FINISH the raw edge, stitch under 1/4" (6mm) OR zig-zag over edge OR overlock/serge edge. SLIPSTITCH hem in place.  
To form creases, bring leg seams together; press along folds to within 9" (23cm) of upper edge.



# Congrats!

You've completed your sewing adventure

---

**SHARE  
YOUR** LOOK



Post your pattern and tag us  
[@simplicity\\_creative\\_group](#) and [#simplicitypatterns](#)  
for a chance to be featured on our social media.

Look for more PDF patterns at [simplicity.com](https://www.simplicity.com)

Have a question or need help with your sewing project call us at  
1-888-588-2700



Simplicity ©2024 a division of IG Design Group Americas Inc. • Atlanta, GA 30342 USA [www.thedesigngroup.com](http://www.thedesigngroup.com) • All Rights Reserved. [www.simplicity.com](http://www.simplicity.com) • Made in the U.S.A. Fabriqué aux États-Unis.

To be used for individual private home use only and not for commercial or manufacturing purposes. • A usage privé seulement et non à des fins commerciales ou de production en série. • Para uso privado solamente, no se puede utilizar con propósitos de comercialización o de producción en serie.