

S3026

Simplicity[®] COSTUMES



Designed and printed in USA.

easy-to-sew

Shop all the pattern brands you love @

Simplicity[®].com

Easy

TODDLERS' ANIMAL COSTUMES

Suggested Fabrics: Double Faced Fleece, Fleece, Minky Fleece. **Lining:** Jersey Knit, Interlock.

Notions: A,B,C: One strip of 7" x 38" (18cm x 97cm) rib knit trim (for sleeve bands), ½ yd. (0.4) of ½" (1.3cm) hook and loop tape, ¼ yd. (0.8m) of ½" (1.3cm) elastic, ¾" (1.5cm) length of 1" (2.5cm) hook and loop tape (for hood), polyfiberfill, 1¼ yds. (1.3m) of 1" (2.5cm) elastic (for shell straps). **Also for A:** Four 12" (30cm) long chenille stems, two 1½" (4cm) pom-poms (for eyes). **Also for B:** Four 12" (30cm) long chenille stems, two 1½" (4cm) pom-poms (for eyes), assorted pom-poms (for shell), fabric paint, fabric glue. **Also for C:** Fabric paint.

Sizes ½ 1 2 3 4

A Contrast 2, B,C Contrast 3 (Sleeve Bands) - 7" x 38" rib knit trim

Lining A,B,C

	½	1	2	3	4	Yds.
60"*	½	½	¾	¾	¾	
150cm*	0.5	0.5	0.5	0.6	0.6	m

Lady Bug Costume A

	½	1	2	3	4	Yds.
60"*	1¼	1¾	1¾	1½	1½	
150cm*	.1	1.3	1.3	1.4	1.4	m

A Contrast 1 (Hood Center, Shell Top, Shell Bottom, Shell Straps) - 60" - ¾ yd. (150cm - 0.6m)*

Paper-backed fusible web: 17" - ¾ yd. (43cm - 0.5m)

Snail Costume B

	½	1	2	3	4	Yds.
60"*	1¾	1¾	1¼	1¾	1¾	
150cm	1.0	1.0	1.1	1.1	1.3	m*

B Contrast 1 (Shell Straps, Shell Top) - 60" - ¾ yd. (150cm - 0.6m)*

B Contrast 2 (Shell Bottom, Shell Appliqué) - 60" - ½ yd. (150cm - 0.5m)*

Paper-backed fusible web: 17" - ½ yd. (43cm - 0.5m)

Turtle Costume C

	½	1	2	3	4	Yds.
60"*	1	1	1¾	1¾	1¾	
150cm*	0.9	0.9	1.0	1.1	1.3	m

C Contrast 1 (Hood Side, Hood Center, Shell Bottom, Eyelid, Shell Top) - 60" - ¾ yd. (150cm - 0.7m)*

C Contrast 2 (Shell Straps, Belly Appliqué, Shell Appliqués) - 60" - ½ yd. (150cm - 0.5m)*

Eyes - 7" x 14" (18cm x 36cm) fabric remnant

Paper-backed fusible web: 17" - ¾ yd. (43cm - 0.7m)

FINISHED GARMENT MEASUREMENTS (Includes Wearing and Design Ease)

Finished back length from base of neck

Costume A,B,C	24	26	28	30	32	Ins.
	(61)	(66)	(71)	(76)	(81)	(cm)



A



B



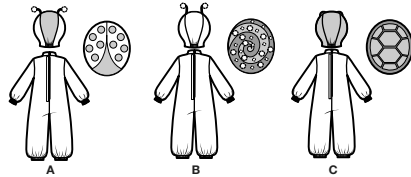
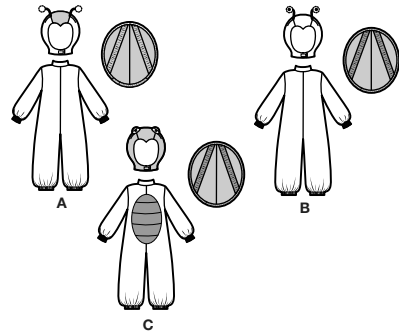
C

*with nap **without nap

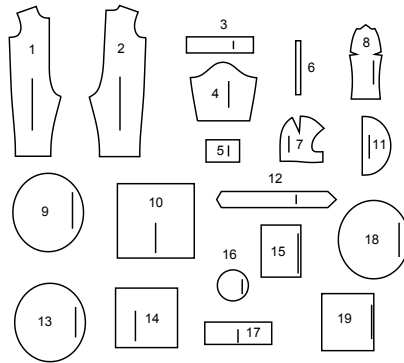
*avec sens **sans sens

Simplicity®

Thank you for purchasing this Simplicity pattern. We made every effort to provide you with a high quality product.



19 PIECES



- | | |
|-----------------------------|-------------------------|
| 1 FRONT - A,B,C | 11 SHELL BOTTOM - A,B,C |
| 2 BACK - A,B,C | 12 SHELL STRAP - A,B,C |
| 3 NECK BAND - A,B,C | 13 SHELL TOP - B |
| 4 SLEEVE - A,B,C | 14 SHELL APPLIQUE - B |
| 5 SLEEVE BAND - A,B,C | 15 BELLY APPLIQUE - C |
| 6 GUIDE FOR ELASTIC - A,B,C | 16 EYE - C |
| 7 HOOD SIDE - A,B,C | 17 EYELID - C |
| 8 HOOD CENTER - A,B,C | 18 SHELL TOP - C |
| 9 SHELL TOP - A | 19 SHELL APPLIQUE - C |
| 10 SHELL APPLIQUE - A | |

General Directions

The Pattern

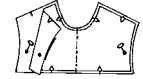
- SYMBOLS**
- GRAIN LINE: Place on straight grain of fabric parallel to selvage
 - PLACE SOLID LINE on fold of fabric.
 - CENTER FRONT OR BACK OF GARMENT.
 - NOTCHES
 - DOTS
 - CUTTING LINE
 - LENGTHEN OR SHORTEN LINES
- SEAM ALLOWANCE: 5/8" (1.5cm) unless otherwise stated is included but not printed on MULTI-SIZE PATTERNS. Mark your size with colored felt tip pen. See chart on tissue for how to use MULTI-SIZE PATTERNS.

- ADJUST IF NEEDED**
- Make adjustments before placing pattern on fabric.
- TO LENGTHEN:** Cut pattern between lengthen or shorten lines. Spread pattern evenly, the amount needed and tape to paper.
- TO SHORTEN:** At lengthen or shorten lines, make an even pleat taking up amount needed. Tape in place.
- When lengthen or shorten lines are not given, make adjustments at lower edge of pattern.

Cutting/Marking

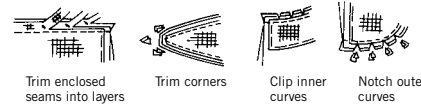
- BEFORE CUTTING:**
- PRESS pattern pieces with a warm dry iron. PRE-SHRINK fabric by pre-washing washables or steam-pressing non-washables.
 - CIRCLE your cutting layout.
 - PIN pattern to fabric as shown in Cutting Layouts.
 - FOR DOUBLE THICKNESS: Fold fabric with RIGHT sides together.
 - FOR SINGLE THICKNESS: Place fabric RIGHT side up.
 - FOR PILE, SHADED OR ONE WAY DESIGN FABRICS: Use "with nap" layouts

- AFTER CUTTING:**
- Transfer markings to WRONG side of fabric before removing pattern. Use pin and chalk method or dressmaker's tracing paper and wheel.
 - To Quick Mark:**
 - Snip edge of fabric to mark notches, ends of fold lines and center lines.
 - Pin mark dots.



Sewing

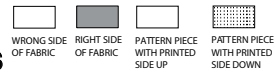
- SEW garment following Sewing Directions.
- PIN or machine-baste seams matching notches.
- STITCH 5/8" (1.5 cm) seams unless otherwise stated.
- PRESS seams open unless otherwise indicated clipping when necessary so seams will lie flat.
- TRIM seams to reduce bulk, as shown below.



SPECIAL CUTTING NOTES

- If layout shows a piece extending past fold, cut out all pieces except piece that extends. Open out fabric to single thickness. Cut extending piece on RIGHT side of fabric in position shown.
- Mark small arrows along both selvages indicating direction of nap or design. Fold fabric crosswise with RIGHT sides together, and cut along fold (a). Turn one fabric layer around so arrows on both layers go in the same direction. Place RIGHT sides together (b).

Cutting Layouts



POSITION OF PATTERN PIECES MAY VARY SLIGHTLY ACCORDING TO YOUR PATTERN SIZE

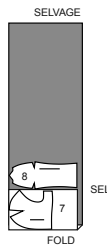
A CONTRAST 2, B,C CONTRAST 3 (SLEEVE BANDS)

7" X 38" (18CM X 97CM) RIB KNIT TRIM

LINING A,B,C

USE PIECES 7 8

60" (150CM) WITH NAP ALL SIZES

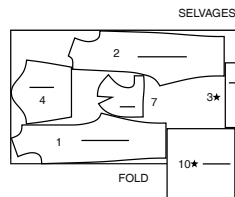


LADYBUG COSTUME - A

USE PIECES 1 2 3 4 7 10

CUT ONE OF PIECE 3

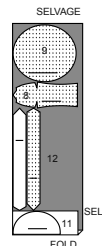
60" (150CM) WITH NAP ALL SIZES



A CONTRAST 1 (HOOD CENTER, SHELL TOP, SHELL BOTTOM, SHELL STRAPS)

USE PIECES 8 9 11 12

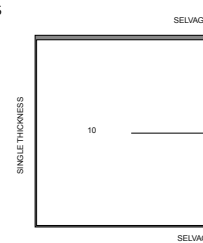
60" (150CM) WITH NAP ALL SIZES



PAPER BACKED FUSIBLE WEB A

USE PIECE 10

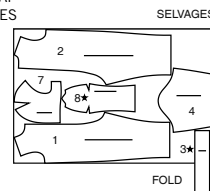
17" (43CM) ALL SIZES



SHELL COSTUME B

USE PIECES 1 2 3 4 7 8 CUT ONE OF PIECE 3

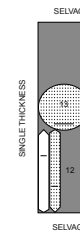
60" (150CM) WITH NAP ALL SIZES



B CONTRAST 1 (SHELL STRAPS, SHELL TOP)

USE PIECES 12 13

60" (150CM) WITH NAP ALL SIZES



B CONTRAST 2 (SHELL BOTTOM, SHELL APPLIQUE)

USE PIECES 11 14

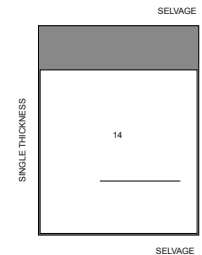
60" (150CM) WITH NAP ALL SIZES



PAPER BACKED FUSIBLE WEB B

USE PIECE 14

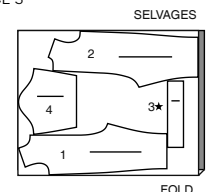
17" (43CM) ALL SIZES



TURTLE COSTUME C

USE PIECES 1 2 3 4 CUT ONE OF PIECE 3

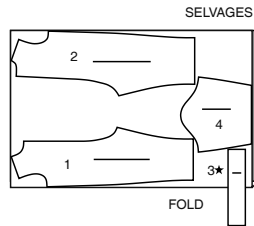
60" (150CM) WITH NAP SIZES 1/2 1 2



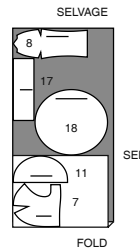
CUTTING LAYOUTS CONTINUED ON PAGE 2

S3026

2 of 4

60" (150CM)
WITH NAP
SIZES 3 4**C CONTRAST 1 (HOOD SIDE, HOOD CENTER, SHELL BOTTOM, EYELID, SHELL TOP)**

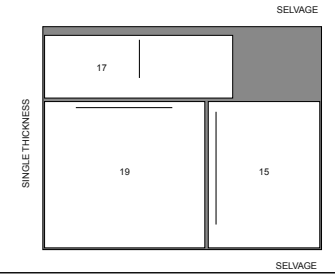
USE PIECES 7 8 11 17 18

60" (150CM)
WITH NAP
ALL SIZES**C CONTRAST 2 (SHELL STRAPS, BELLY, SHELL APPLIQUES)**

USE PIECES 12 15 19

60" (150CM)
WITH NAP
ALL SIZES**PAPER BACKED FUSIBLE WEB C**

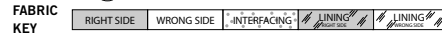
USE PIECES 15 17 19

17" (43CM)
ALL SIZES**EYES-** CUT ONE OF PIECE 16 FROM FABRIC REMNANT**APPLIQUES
PREPARING APPLIQUES**

A. Apply fusible interfacing (paper backed fusible web) to **WRONG** side of applique fabric, following manufacturer's directions. Cut applique tissue block along outer solid line. Pin pattern to **RIGHT** side of prepared fabric. Cut out each applique. Transfer markings to **RIGHT** side of applique using a washable fabric marking pen or pencil.

APPLYING APPLIQUES

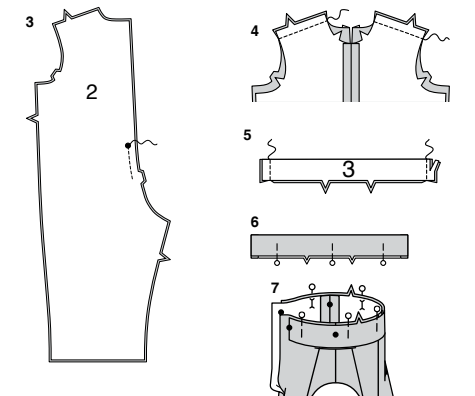
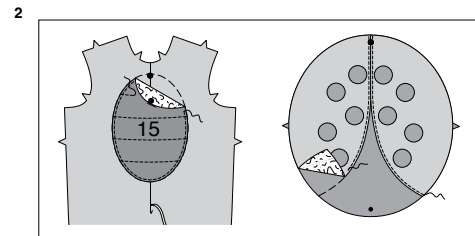
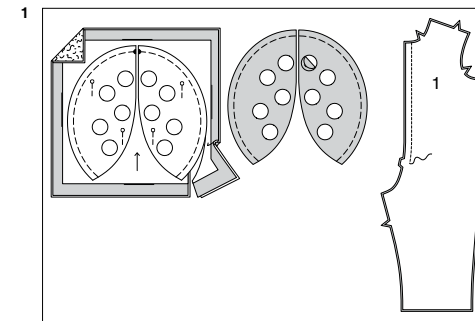
B. Pin applique(s) to section as instructed in Sewing Directions. Be sure to clear all seam allowances. A glue stick can be used to temporarily hold the applique(s) in place before stitching. Fuse appliques in place, following manufacturer's directions. Stitch as directed in Sewing Directions.

Sewing DirectionsRead **General Directions** on page 1 before you begin.**SIMPLY THE BEST TECHNIQUES FOR ...
SEWING FLEECE**

- Fleece fabric is strong, hard to puncture or tear.
- Cut edges of fleece fabrics don't ravel so you can leave raw the inner edges of seams and hems.
- When pinning pieces together, use long pins with bead heads because short pins tend to get lost in the fleece.
- When stitching, try using a narrow zig-zag stitch, adjusting the width and length for the type of fleece you're using. Always test first on some scraps and keep for reference.
- Sew slowly and carefully the first time you stitch a seam because stitches are hard to remove.
- When sewing around shaped areas, sew slowly, being careful not to stretch the fabric.

SEWING KNITS

- Use a ball point or stretch needle.
- Narrow zig-zag stitch or a stretch stitch.
- Some knits require very little or no pressing while sewing.
- Use the appropriate temperature setting. Press lightly or use steam.

Sewing methods in **BOLD TYPE** have Sewing Tutorial Video available. Scan **QR CODE** to watch videos:**DART** - See **Darts**: "sewing flat dart" video.**EDGESTITCH** - See **Machine Stitches**: "how to edgestitch" video.**GATHER** - See **Gathering**: "sewing two row gathers" video.**REINFORCE** - See **Machine Stitches**: "how to reinforce" video.**SLIPSTITCH** - See **Hand Stitching**: "how to slipstitch" video.**STAYSTITCH** - See **Machine Stitches**: "how to do stay-stitching" video.**TACK** - See **Hand-Stitching**: "how to tack" video.**TOPSTITCH** - See **Machine Stitches**: "how to topstitch" video.**TRIM** - See **How to Sew**: Trim, Clip, and Layer Seams" video.

PATTERN PIECES WILL BE IDENTIFIED BY NUMBERS THE FIRST TIME THEY ARE USED. STITCH 5/8" (1.5CM) SEAMS WITH RIGHT SIDES TOGETHER UNLESS INDICATED.

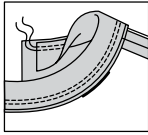
**LADYBUG A, SNAIL B, OR
TURTLE C****JUMPSUIT A, B, C**

NOTE: *The first View mentioned will be illustrated, unless otherwise indicated.*

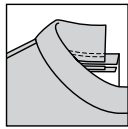
- Pin center front seam of **FRONT (1)** sections, matching double notches. Stitch seam above notches, back-stitching at notches to reinforce seam.
- APPLIQUE C** - Prepare using **BELLY APPLIQUE (15)** tissue - See **GENERAL DIRECTIONS FOR APPLIQUES**. Pin applique to **RIGHT** side of front, having outer edges along placement line, matching large dots and triple notches. Fuse in place. **EDGESTITCH** along outer raw edges **TOPSTITCH** along broken lines.
- FOR ALL VIEWS-** Pin center back seam of **BACK (2)** sections, matching large dots and triple notches. Stitch seam between large dots and triple notches, back-stitching at large dots and notches to reinforce seam.
- Stitch front to back at shoulder seams.
- Fold **NECK BAND (3)** in half, lengthwise, having **RIGHT** sides together and raw edges even. Stitch ends. **TRIM** seam.
- Turn neck band **RIGHT** side out; lightly press if necessary. Pin raw edges together.
- On **OUTSIDE**, pin band to neck edge, matching centers, placing small dots at shoulder seams, matching centers back and remaining small dots.

SEWING TUTORIALSBuild your skills viewing short, easy-to-follow videos at [simplicity.com/sewingtutorials](https://www.simplicity.com/sewingtutorials)

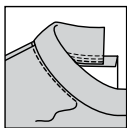
8



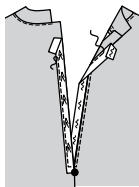
9



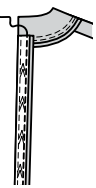
10



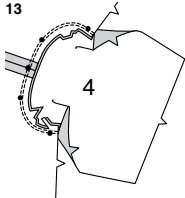
11



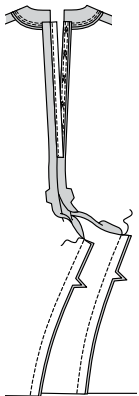
12



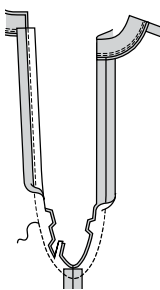
13



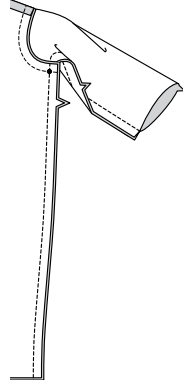
14



15



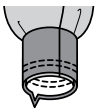
16



17



18



8. Stitch neck seam. Stitch again exactly 1/4" (6mm) away from first stitching within seam allowance.

9. Press seam towards jumpsuit. Press under 5/8" (1.5cm) on remaining upper raw edges of jumpsuit, as shown.

10. Trim away 1/4" (6mm) on upper neck edges of jumpsuit as far neck band, trimming both band and jumpsuit seam allowances close to second stitching between ends of band, as shown.
On **OUTSIDE**, **EDGE**STITCH neck edge of jumpsuit close to seam through all thicknesses.

11. Cut one piece of 1/2" (1.3cm) hook and loop tape the length of back opening edge between neck seam and large dot; separate tape.
On **OUTSIDE**, pin hook (rough) half to **LEFT** back opening edge, having long inner edge next to seam line. Stitch close to inner long edge.
Press under seam allowance on **RIGHT** back opening edge.
Pin pressed edge just over inner long edge of loop (soft) half of tape. (Note that the loop side extends beyond the back opening edge...this is to reduce bulk at back opening.) Stitch close to pressed edge.

12. Turn **LEFT** back opening edge to **INSIDE**.
Stitch close to inner long edge of tape.
If desired, pivot at lower end of tape and square stitch to seam, keeping **RIGHT** back opening free.

13. With **RIGHT** sides together, pin **SLEEVE** (4) to armhole edge with center small dot at shoulder seam, matching notches and remaining small dots. Stitch. Stitch again 1/8" (3mm) from first stitching.
Trim seam below notches close to stitching.
Press seam toward sleeve.

14. Stitch front to back at inner leg seams, matching notches.

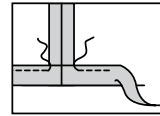
15. Pin center seam, matching inner leg seams and notches. Stitch, connecting to previous stitching.
To **REINFORCE** seam between notches, stitch again over first stitching.
TRIM seam between notches.

16. Pin front to back at side and underarm seam, matching small dots. Stitch entire seam.

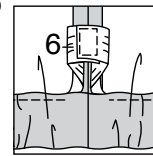
17. With **RIGHT** sides together, stitch ends of **SLEEVE BAND** (5) together.
Fold band in half, having **WRONG** sides together and raw edges even; press. Pin.

18. On **OUTSIDE**, pin band to lower edge of sleeve, matching notches and seams, having raw edges even.
Stitch, stretching band to fit.
Stitch again 1/4" (6mm) from first stitching within the seam allowance. Trim seam close to second stitching.
Press seam toward sleeve, pressing band out.

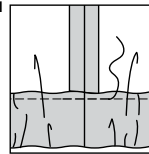
19



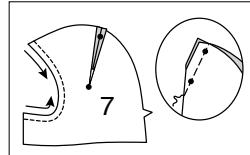
20



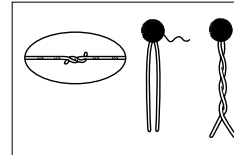
21



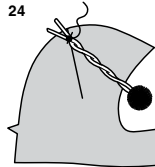
22



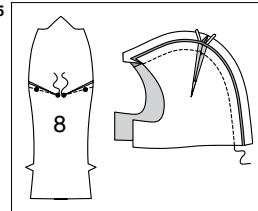
23



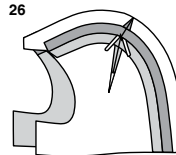
24



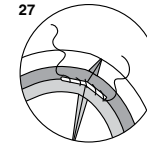
25



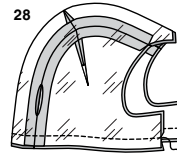
26



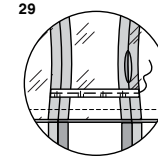
27



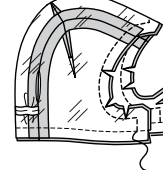
28



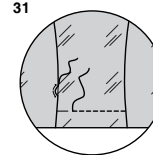
29



30



31



19. Turn lower edge of leg 1" (2.5cm) to **INSIDE** forming casing; press.
Stitch 1/4" (6mm) from raw edge, leaving an opening for inserting elastic.

20. For each leg, cut one piece of 1/2" (1.3cm) elastic the length of **GUIDE FOR ELASTIC** (6). Insert elastic through casing.
Overlap ends 5/8" (1.5cm) each side of center. Stitch ends of elastic together securely.

21. Stitch opening closed.
Distribute fullness evenly.
TIP: To secure elastic so it won't twist in wearing, stitch through all thicknesses of casing in the groove of each seam.

HOOD A, B, C

22. **FOR HOOD A, B - STAYSTITCH** front edge of **HOOD SIDE** (7) sections 1/2" (1.3cm) from raw edge in direction of arrows.
Staystitching won't be shown in the following illustrations.
Make **DART**, matching small dots and bringing broken lines together; press seam open as far as possible.

23. For each antenna, lap and twist ends of two pipe cleaners together for about 1" (2.5cm), forming one long piece. Fold pipe at center and sew a pom pom at fold. Twist pipe cleaners together for approximately 4-3/4" (12cm).
Trim free ends of pipe cleaner to at least 1" (2.5cm). (This will help support the weight of the antennae).

24. On **OUTSIDE**, center twisted end of antenna over dart seam, extending free ends of pipe cleaners beyond seam line, as shown.
Hand **TACK** in place just along seam line.

25. Make **DARTS** in **HOOD CENTER** (8) sections same as for hood sides, pressing dart seams open.
Stitch hood sides to hood center at inner edges, matching dart seams.

26. Press hood seams open.

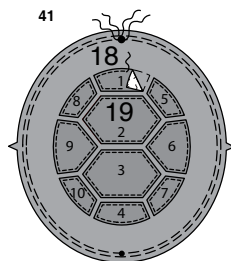
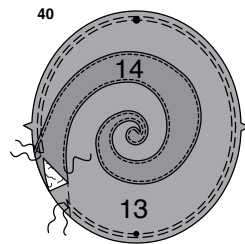
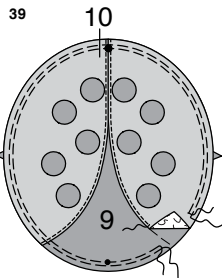
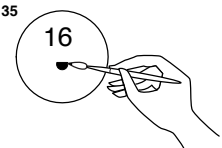
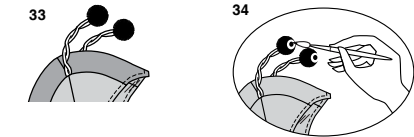
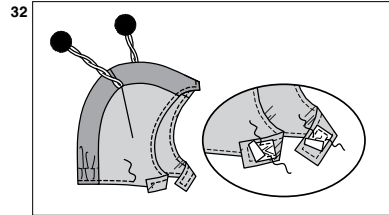
27. Spread ends of antenna and center over seam. Overcast ends over seam as shown, as shown, being careful not to let stitches show on **OUTSIDE**.
If desired, hand **TACK** seam allowances to dart seam, being careful not to let stitches show on **OUTSIDE**.

28. Make darts and stitch seams of hood lining sections same as for hood, leaving an opening in one side seam below darts for turning.
Pin lining to hood along lower edges, matching seams and having raw edges even; stitch.

29. Cut one piece of elastic 3" (7.5cm) long.
On **WRONG** side, center elastic over back lining along stitching line, having ends even with hood side seam allowance, as shown.
Using long machine basting stitches, baste along stitching line between seams, gently stretching elastic as you stitch, keeping hood free.

30. With **RIGHT** sides together and raw edges even, pin remaining raw edges of lining and hood together, matching centers back and seams; stitch.
TRIM seam and corners; clip curves.

31. Turn hood through opening in seam.
SLIPSTITCH opening closed.
Pin hood to lining at ends of elastic, matching seams and stitching lines.
Stitch as basted between inner seams, stretching elastic as you stitch.



32. On **OUTSIDE**, **TOPSTITCH** outer edges of hood 1/4" (6mm) from finished edges, squaring stitching at corners and stretching elastic to flatten as you stitch. Cut one piece of 1/2" (1.3cm) hook and loop tape 1" (2.5cm) long. Separate tape.
On **OUTSIDE** side, pin soft half of tape to **LEFT** end of hood within solid rectangular lines. **EDGESTITCH** outer edges.
On **INSIDE**, stitch rough half of tape to **RIGHT** end of hood in same manner.

33. Curve antennae toward front to shape.

34. **FOR HOOD B** - Paint an eye on each forward-facing pom pom, using one color for the iris and another for the pupil, as shown, or as desired.

CONTINUE AS FOLLOWS FOR HOOD C

35. On **OUTSIDE**, paint eye on each **EYE** (16) within line forming semi-circle.

36. Prepare **EYELID** (17) sections same as you would for appliques. **SEE GENERAL DIRECTIONS FOR APPLIQUES.** With **RIGHT** sides facing up, pin eyelid to eye, matching large dots, having straight edge along broken lines, and raw edges even. Remove paper backing. Fuse in place. **EDGESTITCH** straight edge.
Using a small running stitch, hand-gather along 3/8" (1cm) seam line, inserting needle from **WRONG** side and coming out through **RIGHT** side.

37. Pull up gathering stitches, turning seam allowance to **INSIDE**, leaving an opening for stuffing. Pull small pieces of fiberfill apart and stuff eye through opening, shaping it as you go.

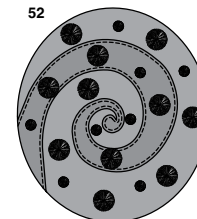
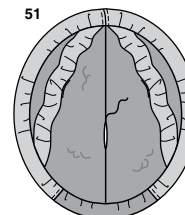
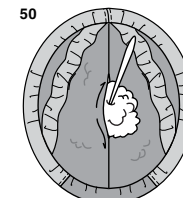
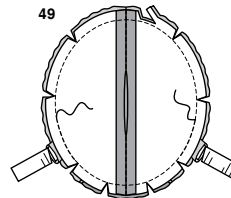
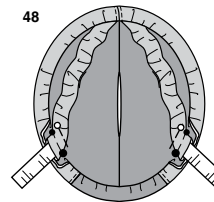
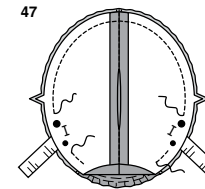
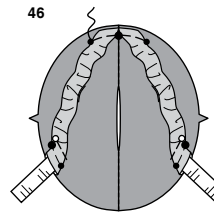
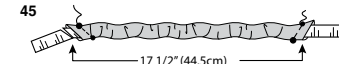
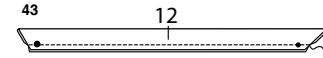
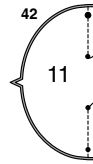
38. On **OUTSIDE**, pin eye along placement line and over seam or as desired, shaping eye to fit. Add more stuffing and adjust gathering stitches as necessary. Fasten thread ends. Hand-sew eye in place.

BACKPACK A, B, C

39. **FOR VIEW A** - Prepare **SHELL APPLIQUE** (10). **SEE GENERAL DIRECTIONS FOR APPLIQUES.** With **RIGHT** sides facing up and outer raw edges even, pin applique to **SHELL** (9), matching large dots and placing inner edges along broken lines. Remove paper backing. Fuse in place. **EDGESTITCH** appliques along inner edges, as shown. Machine-**GATHER** outer edge of shell along seam line and 1/4" (6mm) away from first stitching within seam allowance. **TIP**- Increase length of gathering stitches if fabric is bulky.

40. **FOR VIEW B** - Prepare **SHELL APPLIQUE** (14). **SEE GENERAL DIRECTIONS FOR APPLIQUES.** With **RIGHT** sides facing up and outer raw edges even, pin applique to **SHELL** (13), placing inner edges along broken lines. Remove paper backing. Fuse in place. **EDGESTITCH** inner edges of appliques. Machine-**GATHER** outer edge of shell along seam line and 1/4" (6mm) away from first stitching within seam allowance. **TIP**- Increase length of gathering stitches if fabric is bulky.

41. **FOR VIEW C** - Prepare **SHELL APPLIQUE** (19). **SEE GENERAL DIRECTIONS FOR APPLIQUES.** With **RIGHT** sides facing up and outer raw edges even, pin appliques to **SHELL** (18), placing inner edges along broken lines of corresponding numbers. Remove paper backing. Fuse in place. **EDGESTITCH** outer edges of each applique. Machine-**GATHER** outer edge of shell along seam line and 1/4" (6mm) away from first stitching within seam allowance. **TIP**- Increase length of gathering stitches if fabric is bulky.



CONTINUE AS FOLLOWS FOR VIEWS A, B, C

42. Pin center back seam of **SHELL BOTTOM** (11) sections, matching small and large dots. Stitch, leaving seam open between small dots for turning and stuffing. Back-stitch at inner small dots to reinforce seam.

43. Fold **SHELL STRAP** (12) in half with **RIGHT** sides together and raw edges even. Stitch in a 3/8" (1cm) seam, leaving ends open.

44. Turn strap; lightly press.

45. Insert elastic through opening in straps. For each strap, cut one piece of 1" (2.5cm) wide elastic 20" (51cm) long. Scrunch up strap so that shorter of the two long edges measures 17-1/2" (44.5cm) between raw ends, as shown; pin. Machine-stitch across **TOP** end of strap along seam line between small and large dot; trim ends of elastic even with angle of straps. Hand-baste **BOTTOM** ends of straps to shell, matching small and large dots; do not trim ends of elastic. This extra length of elastic is for adjustment.

46. On **OUTSIDE**, baste **TOP** ends of straps to **TOP** end of bottom shell, matching small and large dots. Pin free ends of straps to shell, matching remaining small and large dots, and placing pins above basting, as shown, clearing seam allowance.

47. With **RIGHT** sides together and raw edges even, pin shell bottom to shell, matching small and large dots. Pull up gathers to fit. Baste, leaving seam open to within 1/4" (6mm) of small and large dots on **BOTTOM**, as shown, being careful not to catch in free edges of straps. Stitch as basted.

48. Turn backpack **RIGHT** side out. Add just enough stuffing so that you can try on backpack and adjust strap length. Try on backpack. Adjust bottom ends of elastic and straps so that the backpack looks good and feels comfortable, keeping ends of straps at same angle.

49. Remove backpack and stuffing. Turn backpack **WRONG** side out, tucking straps back into openings. Stitch remaining outer edges. **TRIM** seam and ends of bottom straps if necessary; clip curves.

50. Turn backpack **RIGHT** side out; lightly press. Stuff.

TIPS FOR STUFFING:

- Pull fiberfill apart and fluff it before you use it. Break apart lumps and thick spots to create a smooth looking project.
- Use pieces about the size of a tennis ball for large sections or ping pong ball for small sections. Pack into place using the end of a long handed wooden spoon for large sections or the end of a crochet hook or chopstick for smaller sections.
- Pack firmly in place each time stuffing is added. Use both hands to mold and shape, being careful not to over stuff or make lopsided.

51. **SLIPSTITCH** opening closed.

52. **FOR VIEW B** - Glue pom poms onto top shell, as shown, or as desired.



Congrats!

You've completed your sewing adventure

**SHARE
YOUR** LOOK



Post your pattern and tag us
[@simplicity_creative_group](#) and [#simplicitypatterns](#)
for a chance to be featured on our social media.

Look for more PDF patterns at simplicity.com

Have a question or need help with your sewing project call us at
1-888-588-2700



Simplicity ©2024 a division of IG Design Group Americas Inc. • Atlanta, GA 30342 USA www.thedesigngroup.com • All Rights Reserved. www.simplicity.com • Made in the U.S.A. Fabriqué aux États-Unis.

To be used for individual private home use only and not for commercial or manufacturing purposes. • A usage privé seulement et non à des fins commerciales ou de production en série. • Para uso privado solamente, no se puede utilizar con propósitos de comercialización o de producción en serie.