

S3025

**Simplicity**<sup>®</sup>



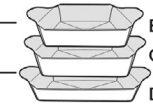
Shop all the pattern brands you love @

**Simplicity**<sup>®</sup>.com

Easy



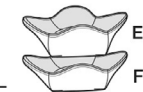
A



B

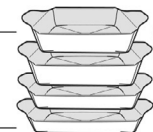
C

D



E

F



G

H

I

J

**MICROWAVABLE COZIES**

**Suggested Fabrics:** Use your fabric, upcycle your own clothing or home linens, or anything you have stashed away! You will need fabrics or items made of 100% Cotton. **Interfacing:** 100% Cotton Batting (no scrim). **Caution:** Use 100% cotton materials only to make microwavable-safe cozies, including thread.

**Interfacing A thru J:** One pkg. of 46" x 36" (117cm x 92cm) 100% cotton batting

**Cozy A** - 4½" x 4½" x 4¾" D (12cm x 12cm x 12cm)

12" X 12" (31cm X 31cm) remnant in each of fabric and contrast

**Cozy B** - 4¾" x 5½" x 2" D (12cm x 14cm x 5cm)

9" X 13" (23cm X 33cm) remnant in each of fabric and contrast

**Cozy C** - 5¼" x 5¾" x 2" D (13cm x 15cm x 5cm)

11" X 15" (28cm X 38cm) remnant in each of fabric and contrast

**Cozy D** - 5½" x 8" x 1½" D (14cm x 21cm x 4cm)

10" X 15" (26cm X 38cm) remnant in each of fabric and contrast

**Cozy E** - 5½" diameter x 3¾" D (14cm x 10cm)

11" X 12" (28cm X 31cm) remnant in each of fabric and contrast

**Cozy F** - 6½" diameter x 3½" D (17cm x 9cm)

12" X 13" (31cm X 33cm) remnant in each of fabric and contrast

**Cozy G** - 5½" x 7" x 3½" D (14cm x 18cm x 10cm)

11" X 16" (28cm X 41cm) remnant in each of fabric and contrast

**Cozy H** - 6½" x 8" x 2" D (17cm x 21cm x 5cm)

12" X 16" (31cm X 41cm) remnant in each of fabric and contrast

**Cozy I** - 6¾" x 8¾" x 1½" D (17cm x 23cm x 4cm)

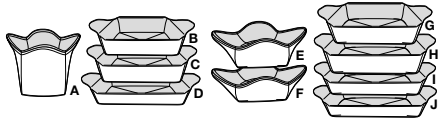
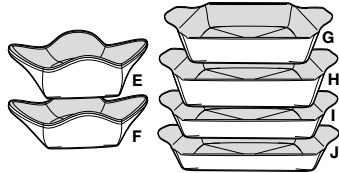
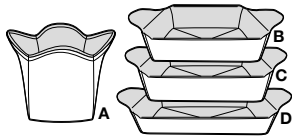
12" X 16" (31cm X 41cm) remnant in each of fabric and contrast

**Cozy J** - 7½" x 9" x 1½" D (19cm x 23cm x 4cm)

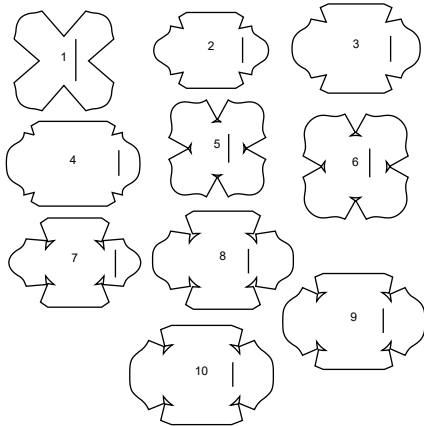
12" X 16" (31cm X 41cm) remnant in each of fabric and contrast

# Simplicity® S3025

Thank you for purchasing this Simplicity pattern. We made every effort to provide you with a high quality product.

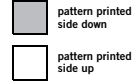


10 PIECES



- 1 COZY - A
- 2 COZY - B
- 3 COZY - C
- 4 COZY - D
- 5 COZY - E
- 6 COZY - F
- 7 COZY - G
- 8 COZY - H
- 9 COZY - I
- 10 COZY - J

## Cutting Layouts



POSITION OF PATTERN PIECES MAY VARY SLIGHTLY ACCORDING TO YOUR PATTERN SIZE

### General Directions For Cutting

**PRE-SHRINK** and iron all fabric.

**FOR DOUBLE THICKNESS** -Fold fabric with **RIGHT** sides together. Pin pattern to **WRONG** side of fabric.

**FOR SINGLE THICKNESS** -Pin pattern to **RIGHT** side of fabric.

★ If layout shows a piece extending past fold, cut out all pieces except piece that extends. Open out fabric to single thickness. Cut extending piece on **RIGHT** side of fabric in position shown.

✱ Mark small arrows along both selvages in **dicating** direction of nap or design. Fold fabric crosswise with **RIGHT** sides together, and cut along fold. Turn one fabric layer around so arrows on both layers go in the same direction. Place **RIGHT** sides together.

### COZY A - 4 1/2" x 4 1/2" x 4 3/4" D (12CM x 12CM x 12CM)

CUT ONE OF PIECE 1 FROM EACH FABRIC AND CONTRAST REMNANT  
FOR INTERFACING: CUT TWO OF PIECE 1 FROM COTTON BATTING

### COZY B - 4 3/8" x 5 1/2" x 2" D (12CM x 14CM x 5CM)

CUT ONE OF PIECE 2 FROM EACH FABRIC AND CONTRAST REMNANT  
FOR INTERFACING: CUT TWO OF PIECE 2 FROM COTTON BATTING

### COZY C - 5 1/8" x 5 7/8" x 2" D (13CM x 15CM x 5CM)

CUT ONE OF PIECE 3 FROM EACH FABRIC AND CONTRAST REMNANT  
FOR INTERFACING: CUT TWO OF PIECE 3 FROM COTTON BATTING

### COZY D - 5 1/2" x 8" x 1 5/8" D (14CM x 21CM x 4CM)

CUT ONE OF PIECE 4 FROM EACH FABRIC AND CONTRAST REMNANT  
FOR INTERFACING: CUT TWO OF PIECE 1 FROM COTTON BATTING

### COZY E - 5 1/2" DIAMETER x 3 3/4" D (14CM x 10CM)

CUT ONE OF PIECE 5 FROM EACH FABRIC AND CONTRAST REMNANT  
FOR INTERFACING: CUT TWO OF PIECE 5 FROM COTTON BATTING

### COZY F - 6 1/2" DIAMETER x 3 1/2" D (17CM x 9CM)

CUT ONE OF PIECE 6 FROM EACH FABRIC AND CONTRAST REMNANT  
FOR INTERFACING: CUT TWO OF PIECE 6 FROM COTTON BATTING

### COZY G - 5 1/2" x 7" x 3 5/8" D (14CM x 18CM x 10CM)

CUT ONE OF PIECE 7 FROM EACH FABRIC AND CONTRAST REMNANT  
FOR INTERFACING: CUT TWO OF PIECE 7 FROM COTTON BATTING

### COZY H - 6 1/2" x 8" x 2" D (17CM x 21CM x 5CM)

CUT ONE OF PIECE 8 FROM EACH FABRIC AND CONTRAST REMNANT FOR INTERFACING: CUT TWO OF PIECE 8 FROM COTTON BATTING

### COZY I - 6 3/4" x 8 7/8" x 1 1/2" D (17CM x 23CM x 4CM)

CUT ONE OF PIECE 9 FROM EACH FABRIC AND CONTRAST REMNANT  
FOR INTERFACING: CUT TWO OF PIECE 9 FROM COTTON BATTING

### COZY J - 7 1/8" x 9" x 1 5/8" D (19CM x 23CM x 4CM)

CUT ONE OF PIECE 10 FROM EACH FABRIC AND CONTRAST REMNANT  
FOR INTERFACING: CUT TWO OF PIECE 10 FROM COTTON BATTING

## Sewing Directions



Read **General Directions** before you begin.

Sewing methods shown in **BOLD** are defined below:

**DART** – See Darts: “**sewing double pointed dart**” video.

**FLAT DART** – See Darts: “**sewing flat dart**” video.

**INTERFACING** – Pin cotton batting to **WRONG** side of fabric. Baste in place along seamlines. See video.

**SLIP STITCH** –See Hand Stitching: “**how to slip stitch**” video.

**TOPSTITCH** - See Machine Stitches: “**how to topstitch**” video.

**PATTERN PIECES WILL BE IDENTIFIED BY NUMBERS THE FIRST TIME THEY ARE USED.**

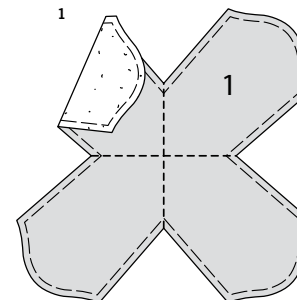
**STITCH 5/8" (1.5CM) SEAMS WITH RIGHT SIDES TOGETHER UNLESS OTHERWISE STATED.**

### SEWING TUTORIALS

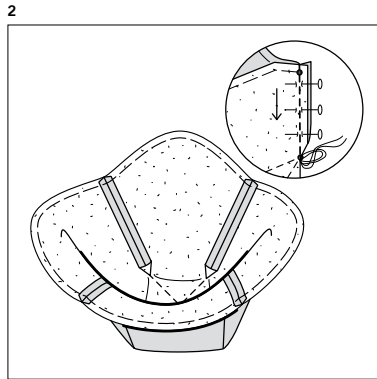


Build your skills viewing short, easy-to-follow videos at [simplicity.com/sewingtutorials](http://simplicity.com/sewingtutorials)

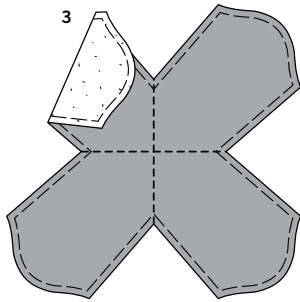
### COZY A



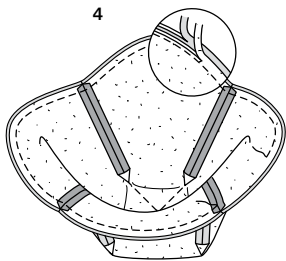
1. For **OUTSIDE** of cozy, apply **INTERFACING** to COZY (1). **TOP-STITCH** along stitching lines.



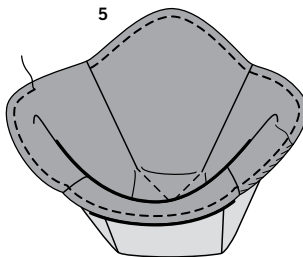
2. Stitch **DART** seams. Press darts open.



3. For **INSIDE** of cozy, apply **INTERFACING** to corresponding Contrast cozy. **TOP-STITCH** along stitching lines.

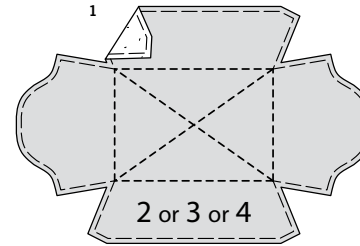


4. Stitch **DART** seams. Press darts open. With **RIGHT** sides together and raw edges even, pin **OUTSIDE** cozy to **INSIDE** cozy, matching centers and seams. Stitch, leaving an opening along one edge for turning. Trim seam in layers, as shown.

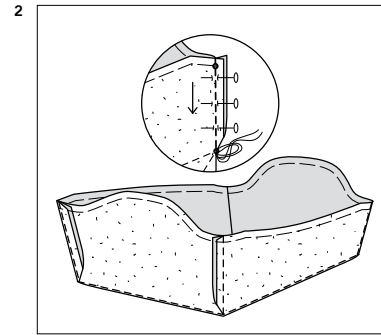


5. Turn cozy; press. **SLIPSTITCH** opening closed. **TOP-STITCH** finished edge.

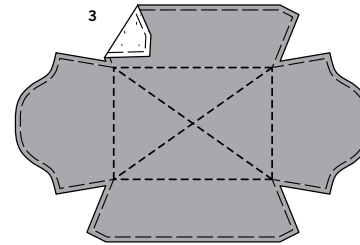
**COZY B, C, D**



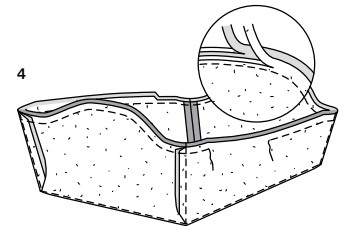
1. For **OUTSIDE** of cozy, apply **INTERFACING** to **COZY (2)**, **COZY (3)**, or **COZY (4)**. **TOP-STITCH** along stitching lines.



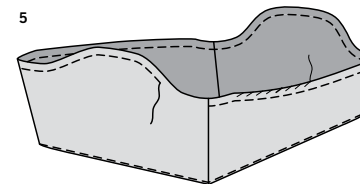
2. Stitch **DART** seams. Press darts toward high "handled" side.



3. For **INSIDE** of cozy, apply **INTERFACING** to corresponding Contrast cozy. **TOP-STITCH** along stitching lines.



4. Stitch **DART** seams, pressing darts open. With **RIGHT** sides together and raw edges even, pin **OUTSIDE** cozy to **INSIDE** cozy, matching centers and seams. Stitch, leaving an opening along one long edge for turning. Trim seam in layers, as shown.

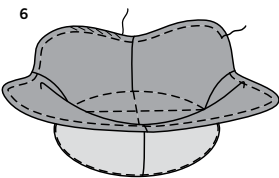
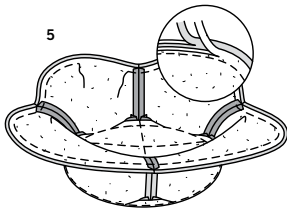
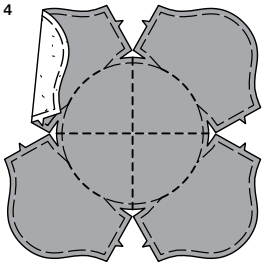
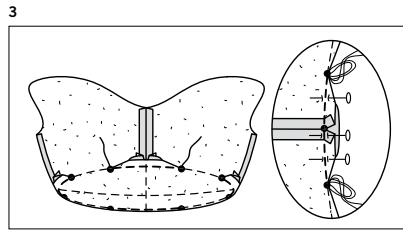
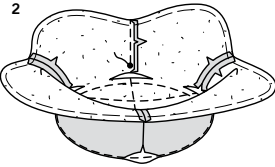
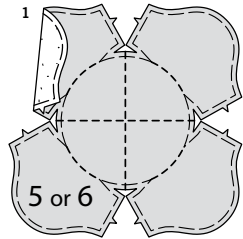


5. Turn cozy; press. **SLIPSTITCH** opening closed. **TOP-STITCH** finished edge.

S3025

3 of 3

## COZY E, F



1. For OUTSIDE of cozy, apply **INTERFACING** to COZY (5) or COZY (6). **TOP-STITCH** along stitching lines.

2. Pin side edges of cozy, matching notches. Stitch from upper edge to small dot, back-stitching at dot to reinforce the seam. Press seams open.

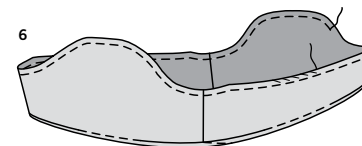
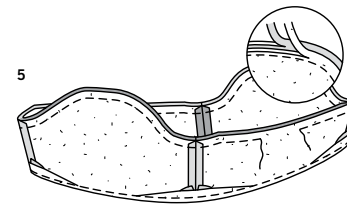
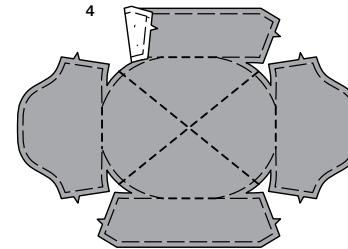
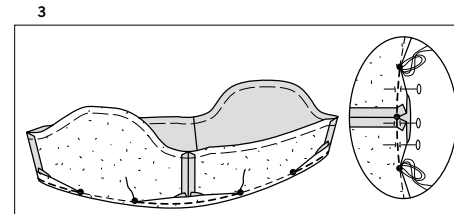
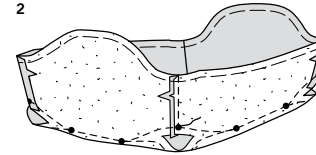
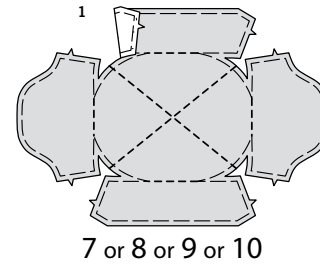
3. Stitch **DART** seams. Press darts away from center.

4. For INSIDE of cozy, apply **INTERFACING** to corresponding Contrast cozy. **TOP-STITCH** along stitching lines. **Stitch side edges and dart seams in the same manner as fabric cozy.**

5. With **RIGHT** sides together and raw edges even, pin **OUTSIDE** cozy to **INSIDE** cozy, matching centers and seams. Stitch, leaving an opening along one long edge for turning. Trim seam in layers, as shown.

6. Turn cozy; press. **SLIPSTITCH** opening closed. **TOP-STITCH** finished edge.

## COZY G, H, I, J



1. For OUTSIDE of cozy, apply **INTERFACING** to COZY (7), (8), (9) or COZY (10). **TOP-STITCH** along stitching lines.

2. Pin side edges of cozy, matching notches. Stitch from upper edge to small dot, back-stitching at dot to reinforce the seam. Press seams open.

3. Stitch **DART** seams. Press darts away from center.

4. For INSIDE of cozy, apply **INTERFACING** to corresponding Contrast cozy. **TOP-STITCH** along stitching lines. **Stitch side edges and dart seams in the same manner as fabric cozy.**

5. With **RIGHT** sides together and raw edges even, pin **OUTSIDE** cozy to **INSIDE** cozy, matching centers and seams. Stitch, leaving an opening along one long edge for turning. Trim seam in layers, as shown.

6. Turn cozy; press. **SLIPSTITCH** opening closed. **TOP-STITCH** finished edge.



# Congrats!

You've completed your sewing adventure

---

**SHARE  
YOUR** LOOK



Post your pattern and tag us  
[@simplicity\\_creative\\_group](#) and [#simplicitypatterns](#)  
for a chance to be featured on our social media.

Look for more PDF patterns at [simplicity.com](https://www.simplicity.com)

Have a question or need help with your sewing project call us at  
1-888-588-2700



Simplicity ©2024 a division of IG Design Group Americas Inc. • Atlanta, GA 30342 USA [www.thedesigngroup.com](http://www.thedesigngroup.com) • All Rights Reserved. [www.simplicity.com](http://www.simplicity.com) • Made in the U.S.A. Fabriqué aux États-Unis.

To be used for individual private home use only and not for commercial or manufacturing purposes. • A usage privé seulement et non à des fins commerciales ou de production en série. • Para uso privado solamente, no se puede utilizar con propósitos de comercialización o de producción en serie.