

S3023

Simplicity®

ELAINE HEIGEL
DESIGNER

easy-to-sew

 Designed and
printed in USA.

Shop all the pattern brands you love @

Simplicity®.com

Easy

PLUSH PETS

Suggested Fabrics: A,B,C,D in Fleece, Minky Fleece. **Contrast A,B, and C,D Contrast 2 (Bow)** in Chambray, Cotton Types, Satin, Taffeta. **Appliqués B,C,D and Tongue C** also in Felt. **Interfacing:** Fusible Fleece.

Notions: A,B,C,D: Polyfiberfill, pair of 15mm - 18mm safety eyes, six-strand embroidery floss. **Also for A:** One skein of chunky yarn.

Contrast A,B and C,D Contrast 2 (Bow Tie): 45** - ¾ yd. (115cm* - 0.4m)

Bunny Plush A

60** - ¾ yd. (150cm* - 0.7m)

Interfacing: 4" x 15" (10cm x 38cm) remnant

Cat Plush B

60** - ¾ yd. (150cm* - 0.7m)

Interfacing: 4" x 8" (10cm x 38cm) remnant

Face Appliqué: 9" x 10" (23cm x 25cm) remnants in each of fabric or felt and paper-backed fusible web

Dog Plush C

60** - ¾ yd. (150cm* - 0.7m)

C Contrast 1 (Ear): 5" x 27" (13cm x 69cm) remnant

Interfacing: 5" x 8" (13cm x 20cm) remnant

Eye Patch: 5" x 7" (13cm x 18cm) fabric or felt remnant

Nose Appliqué: 4" x 4" (10cm x 10cm) fabric or felt remnant

(Note: If you're using fabric for the nose appliqué, save the above-mentioned remnant from C Contrast 1 fabric)

Tongue: 4" x 4" (10cm x 10cm) fabric or felt remnant

Paper-backed Fusible Web: 7" x 8" (18cm x 20cm) remnant

Panda Bear Plush D

60** - ¾ yd. (150cm* - 0.7m)

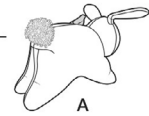
D Contrast 1 (Front Leg Overlay, Back Overlay, Back Leg Overlay, Ear):

60** - ¾ yd. (150cm* - 0.5m)

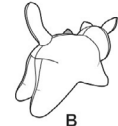
Interfacing: 4" x 7" (10cm x 18cm) remnant

Eye Patch, Nose Appliqué: 4" x 9" (10cm x 23cm) remnants in each of fabric or felt and paper-backed fusible web

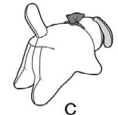
(Note: If you're using fabric for the eye patch and nose appliqués, purchase slightly more yardage of D Contrast 1 fabric)



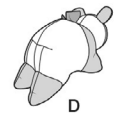
A



B



C

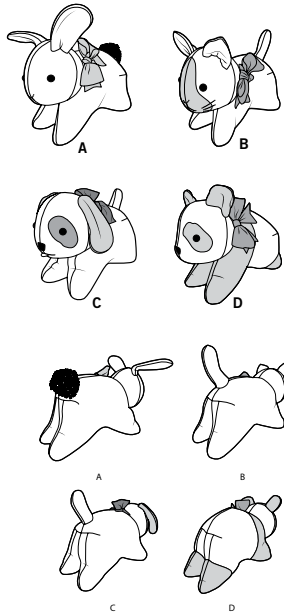


D

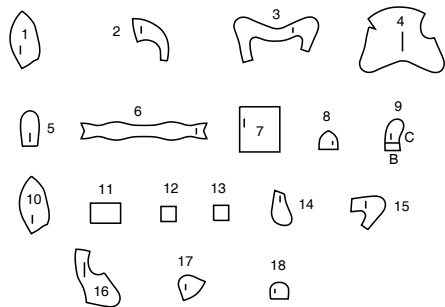
*with nap **without nap

Simplicity® S3023

Thank you for purchasing this Simplicity pattern.
We made every effort to provide you with a high quality product.

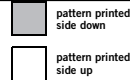


18 PIECES



- 1 HEAD FRONT - A,B
- 2 HEAD BACK - A,B,C,D
- 3 BODY FRONT - A,B,C,D
- 4 BODY BACK - A,B,C,D
- 5 EAR - A
- 6 BOW TIE - A,B,C,D
- 7 FACE APPLIQUE - B
- 8 EAR - B
- 9 TAIL - B,C
- 10 HEAD FRONT - C,D
- 11 EYE PATCH - C,D
- 12 TONGUE - C
- 13 NOSE APPLIQUE - C,D
- 14 EAR - C
- 15 FRONT LEG OVERLAY - D
- 16 BACK OVERLAY - D
- 17 BACK LEG OVERLAY - D
- 18 EAR - D

Cutting Layouts



POSITION OF PATTERN PIECES MAY VARY
SLIGHTLY ACCORDING TO YOUR PATTERN SIZE

General Directions For Cutting

PRE-SHRINK and iron all fabric.

FOR DOUBLE THICKNESS -Fold fabric with RIGHT sides together.
Pin pattern to WRONG side of fabric.

FOR SINGLE THICKNESS -Pin pattern to RIGHT side of fabric.

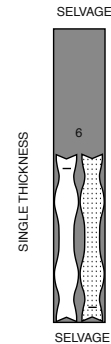
★ If layout shows a piece extending past fold, cut out all pieces except piece that extends. Open out fabric to single thickness. Cut extending piece on RIGHT side of fabric in position shown.

✱ Mark small arrows along both selvages in dictating direction of nap or design. Fold fabric crosswise with RIGHT sides together, and cut along fold. Turn one fabric layer around so arrows on both layers go in the same direction. Place RIGHT sides together.

CONTRAST A,B AND C,D CONTRAST 2 (BOW TIE)

USE PIECE 6

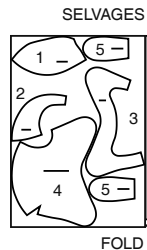
45" (115CM)
WITH NAP



BUNNY PLUSH A

USE PIECES 1 2 3 4 5

60" (150CM)
WITH NAP



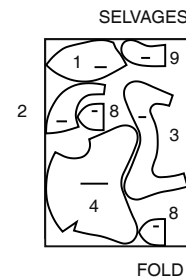
INTERFACING

CUT TWO OF PIECE 5 FROM FUSIBLE FLEECE REMNANT

CAT PLUSH B

USE PIECES 1 2 3 4 8 9

60" (150CM)
WITH NAP



INTERFACING

CUT TWO OF PIECE 8 FROM FUSIBLE FLEECE REMNANT

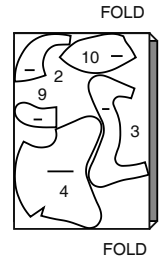
FACE PATCH APPLIQUE

CUT ONE OF PIECE 7 FROM FABRIC OR FELT AND PAPER BACKED FUSIBLE WEB REMNANT

DOG PLUSH C

USE PIECES 2 3 4 9 10

60" (150CM)
WITH NAP



CONTRAST 1 (EAR)

CUT FOUR OF PIECE 14 FROM REMNANT

INTERFACING

CUT TWO OF PIECE 14 FROM FUSIBLE FLEECE REMNANT

EYE PATCH APPLIQUE C

CUT ONE OF PIECE 11 FROM FABRIC OR FELT REMNANT

NOSE APPLIQUE

CUT ONE OF PIECE 13 FROM FABRIC OR FELT REMNANT
NOTE: IF YOU'RE USING FABRIC FOR THE NOSE APPLIQUE,
SAVE THE ABOVE-MENTIONED REMNANT FROM C CONTRAST 1 FABRIC)

TONGUE

CUT ONE OF PIECE 12 FROM FABRIC OR FELT REMNANT

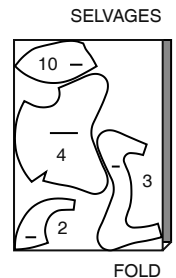
PAPER BACKED FUSIBLE WEB

CUT ONE EACH OF PIECE 11 13 FROM REMNANT

PANDA BEAR PLUSH D

USE PIECES 2 3 4 10

60" (150CM)
WITH NAP

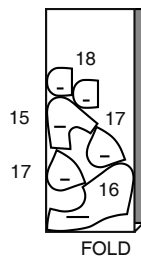


CONTRAST 1**(FRONT LEG OVERLAY, BACK OVERLAY, BACK LEG OVERLAY, EAR)**

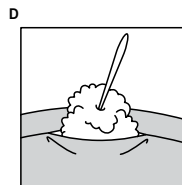
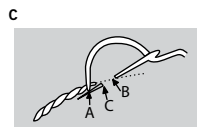
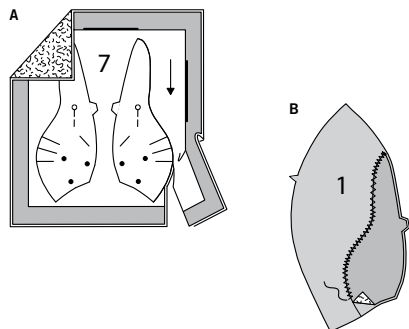
USE PIECES 15 16 17 18

60" (150CM)
WITH NAP

SELVAGES



SEWING TUTORIALS

Build your skills viewing short, easy-to-follow videos at
simplicity.com/sewingtutorials**Sewing Directions**

FABRIC KEY

Sewing methods in **BOLD TYPE** have Sewing Tutorial Video available. Scan QR CODE to watch videos:**DART** - see sewing flat dart video.**EDGESTITCH** - See how to edgestitch video.**STAYSTITCH** - See how to do stay-stitching video.**TOPSTITCH** - See how to topstitch video.**SLIPSTITCH** - Slide needle through a folded edge, then pick up a thread of underneath fabric.**GENERAL DIRECTIONS FOR APPLIQUES****PREPARING APPLIQUES**

- A.** Apply paper backed fusible web to **WRONG** side of applique fabric, following manufacturer's directions. Pin pattern to **RIGHT** side of prepared fabric. Cut out each applique. Transfer markings to **RIGHT** side of applique using a washable fabric marking pen or pencil.

APPLYING APPLIQUES

- B.** Pin applique(s) to project as instructed in Sewing Directions. Be sure to clear all seam allowances where necessary. A glue stick can be used to temporarily hold the applique(s) in place before stitching. Fuse appliques in place, following manufacturer's directions. Zig-zag (satin) OR straight stitch along raw edges OR use fabric paint to seal the edges. Stitching will not be shown in further illustrations. Allow paint to dry before you continue.

GENERAL DIRECTIONS FOR EMBROIDERY

- C.** Form mouth and whiskers using an outline stitch. For outline stitching, work with as many threads as desired and use a large eyed needle. Bring thread to **RIGHT** side at A, down at B, up at C, etc. Always hold thread in the same position either all above or all below the needle for an even line.

GENERAL DIRECTIONS FOR STUFFING

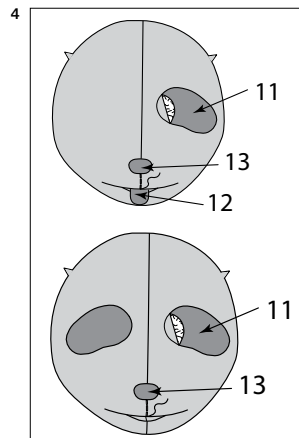
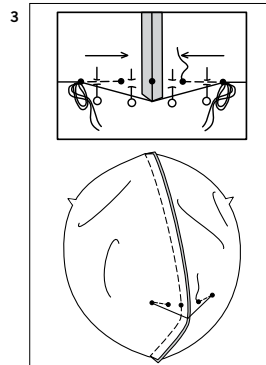
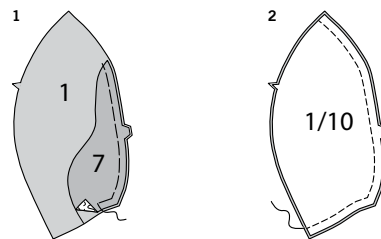
- D.** Pull fiberfill apart and fluff it before you use it. Break apart the lumps and thick spots. This will help to create a smoother looking project. For larger items, Use pieces about the size of a tennis ball. Pack into place using the end of a long handled wooden spoon or chop-stick. For smaller items, Use small pieces and pack into place using the end of a crochet hook or chop-stick. Pack firmly in place each time stuffing is added. Use both hands to mold and shape, being careful not to over stuff or make lopsided.

INTERFACING

CUT TWO OF PIECE 18 FROM FUSIBLE FLEECE REMNANT

EYE PATCH, NOSE APPLIQUE

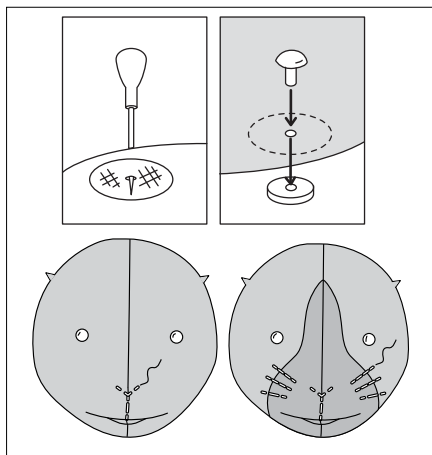
CUT ONE EACH OF PIECE 11 13 FROM FABRIC OR FELT AND PAPER BACKED FUSIBLE WEB REMNANT

NOTE: IF YOU'RE USING FABRIC FOR THE EYE PATCH AND NOSE APPLIQUE, PURCHASE SLIGHTLY MORE YARDAGE OF D CONTRAST 1 FABRIC)**VIEW A, B, C, D****NOTE:** View A will be shown unless otherwise indicated.

- VIEW B- PREPARE FACE APPLIQUE (7).** **APPLY** appliques to FRONT (1) having raw edges even. Baste raw edges together.
- ALL VIEWS-** With **RIGHT** sides together, stitch center front seam of FRONT (1 OR 10) sections.
- TO MAKE DART IN FRONT,** with **RIGHT** sides together, fold the fabric through the center of the dart, bringing broken lines and small dots together. On **INSIDE**, place pins at **RIGHT** angles to the broken lines. Stitch the dart from point ending at inner small dot.
TIP- To prevent a "bubble" at the point, make the last few stitches right on the fold and leave the thread ends long enough to tie a knot. **DO NOT** back-stitch at the point. Press the dart flat along the stitching to "blend" the stitches, then press dart down

- VIEW C, D- PREPARE EYE PATCH (11) and NOSE APPLIQUE (13).** **APPLY** appliques to front along placement lines. **OUTLINE STITCH** center front seam from nose to mouth opening.
VIEW C- Hand tack TONGUE (12) **INSIDE** mouth opening.

5

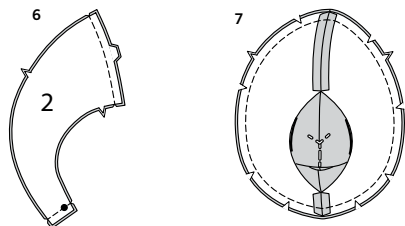


5. ALL VIEWS- If being used as a toy we recommend using safety eyes instead of traditional buttons. If using safety eyes, reinforce the area so that the plastic eyes don't pull through the fabric. Cut remnants of fusible interfacing. Fuse to **WRONG** side of front underneath small dots, following manufacturer's directions.

Apply safety eyes to front at markings (over patches for view C, D).

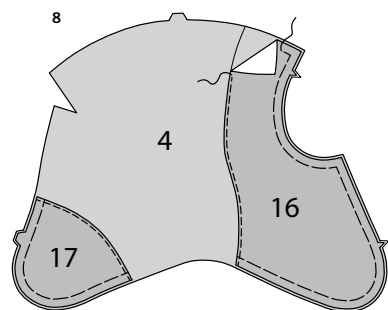
To attach each eye, using a sharp pointed object or an awl, poke a hole at small dots. Insert the eye shank through the opening from **OUTSIDE** and on **INSIDE** secure in place with washer, making sure it is on securely.

VIEW A, B- OUTLINE STITCH along solid lines and along center front seam from nose to mouth opening.

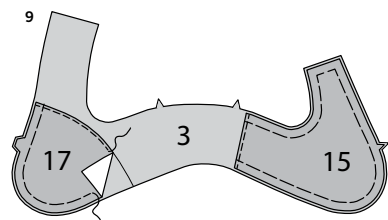


6. With **RIGHT** sides together, pin **HEAD BACK** (2) sections together, having raw edges even. Stitch center back seam and front seam.

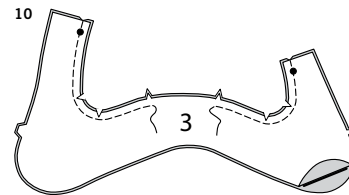
7. With **RIGHT** sides together, pin head back to head front matching notches. Stitch. Trim seam, clip curves.



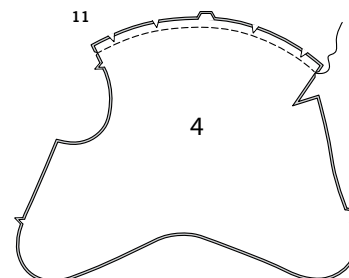
8. VIEW D- Pin **WRONG** side of **BACK OVERLAY** (16) and **BACK LEG OVERLAY** (17) to **RIGHT** side of **BODY BACK** (4) along placement lines, matching markings. Baste outer edges together. **EDGE STITCH** inner edges of overlays to secure.



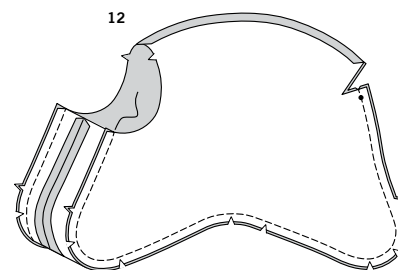
9. Pin **WRONG** side of **FRONT LEG OVERLAY** (15) and **BACK LEG OVERLAY** (17) to **RIGHT** side of **BODY FRONT** (3) along placement lines, matching markings. Baste outer edges together. **EDGE STITCH** inner edges of overlays to secure.



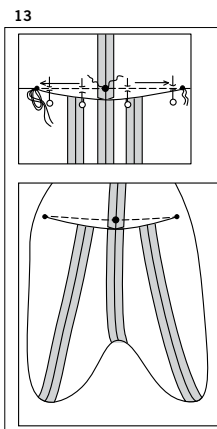
10. ALL VIEWS- With **RIGHT** sides together, Stitch center front seam of **BODY FRONT** (3) sections, leaving an opening between notches. Backstitch at notches to reinforce seam. Trim seam, clip curves.



11. With **RIGHT** sides together, stitch center back seam of **BODY BACK** (4) sections. Trim seam, clip curves.



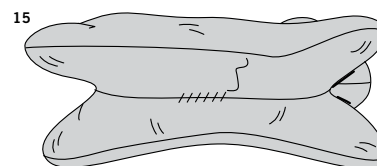
12. With **RIGHT** sides together, pin body front to lower edge of body back, matching small dots and notches. Stitch. Trim seam, clip curves.



13. To stitch dart seam in back, with **RIGHT** sides together, bring broken lines together carefully matching small and large dots. On **INSIDE**, place pins at **RIGHT** angles to the broken lines. Stitch the dart from the middle to one point. Then, overlapping several stitches, work from the middle to the other point. If necessary, carefully clip the dart at its widest point so that it will lie flat.

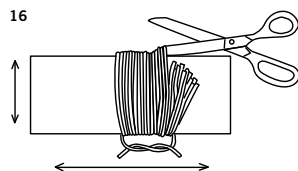
TIP- To prevent a "bubble" at each point, make the last few stitches right on the fold and leave the thread ends long enough to tie a knot. **DO NOT** back-stitch at the points. Press the dart flat along the stitching to "blend" the stitches, then press dart down.

14. With **RIGHT** sides together, pin head to neck edge of body, matching seams, notches and large dots, stretching to fit. Baste. Stitch. Trim seam.



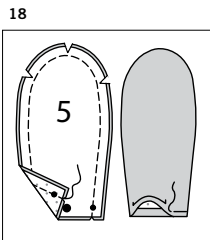
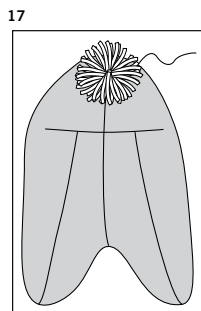
15. Turn stuffed animal **RIGHT** side out through opening. **STUFF**. **SLIPSTITCH** opening closed.

VIEW A

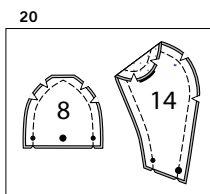
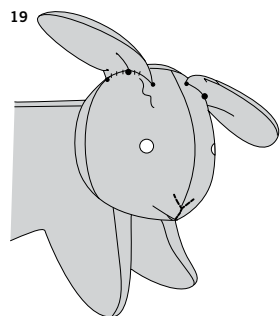
**16.** Make a pom-pom for tail as follows:

Cut a piece of cardboard 5" x 3" (12.5cm x 7.5cm). Wrap yarn around cardboard one hundred times. Cut a strand of yarn 4" (10cm) long. Slip yarn under the loops along one long edge and fasten securely. Cut through loops on remaining edge.

TIP: If you would like to make larger and fuller pom-poms, increase the width of the cardboard and the amount of times you wrap the yarn around the cardboard.

**17.** Hand sew pom-pom to back, centering inside placement lines for View B, C, as shown.**18.** Apply **INTERFACING**, to EAR (5) sections.

Pin ear sections together having raw edges even. Stitch along outer edge of ear, leaving edge with small and large dots open. Trim seam clip curves. Turn ear **RIGHT** side out. Press. Press under seam allowance on lower edges. Hand-baste pressed edges in place.

**19.** On **OUTSIDE**, pin ears to each side of head front, along placement lines, matching small and large dots. Securely **SLIPSTITCH** in place invisibly.

VIEW B, C

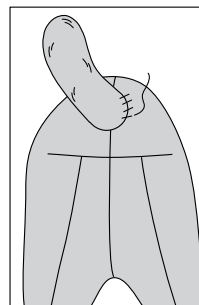
NOTE: View B will be shown unless otherwise indicated.

20. Apply **INTERFACING**, to EAR (8 OR 14) sections.

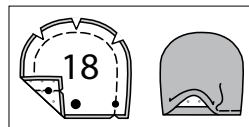
Pin ear sections together having raw edges even. Stitch along outer edge of ear, leaving edge with small and large dots open. Trim seam and corners. Clip curves.

21. Turn ear **RIGHT** side out. Press. Press under seam allowance on lower edges. Hand-baste pressed edges in place.**22.** On **OUTSIDE**, pin ears to each side of head front, along placement lines, matching small and large dots. Securely **SLIPSTITCH** in place invisibly.**23.** With **RIGHT** sides together, stitch **TAIL** (9) sections together, leaving end with small and large dots open. Trim seam, clip curves.**24.** Turn tail **RIGHT** side out. Press. Lightly **STUFF**. Press under seam allowance on lower edges.

25



26

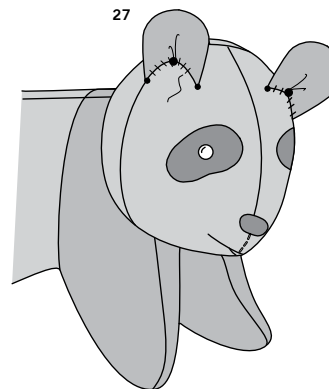


VIEW D

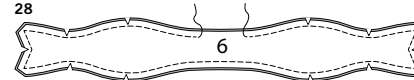
26. Apply **INTERFACING**, to EAR (18) sections.

Pin ear sections together having raw edges even. Stitch along outer edge of ear, leaving edge with small and large dots open. Trim seam, clip curves. Turn ear **RIGHT** side out. Press. Press under seam allowance on lower edges. Hand-baste pressed edges in place.

27

**27.** On **OUTSIDE**, pin ears to each side of head front, along placement lines, matching small and large dots. Securely **SLIPSTITCH** in place invisibly.

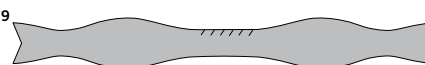
28



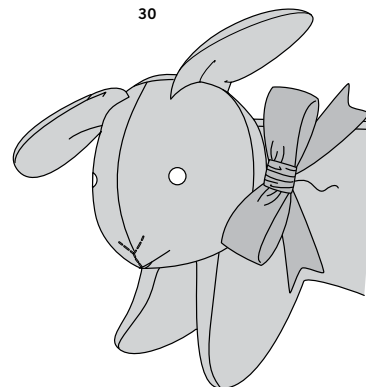
BOW, A, B, C, D

28. With **RIGHT** sides together, stitch **BOW** (6) sections together having raw edges even. Stitch along outer edge, leaving an opening large enough for turning. Trim seam and corners. Clip curves.

29

**29.** Turn bow **RIGHT** side out. Press. **SLIPSTITCH** opening closed.

30

**30.** Tie bow. On **OUTSIDE**, pin bow to **RIGHT** side of neck, or as desired. Securely **SLIPSTITCH** bow in place.



Congrats!

You've completed your sewing adventure

SHARE YOUR LOOK



Post your pattern and tag us
[@simplicity_creative_group](#) and [#simplicitypatterns](#)
for a chance to be featured on our social media.

Look for more PDF patterns at [simplicity.com](https://www.simplicity.com)

Have a question or need help with your sewing project call us at
1-888-588-2700



Simplicity ©2024 a division of IG Design Group Americas Inc. • Atlanta, GA 30342 USA www.thedesigngroup.com • All Rights Reserved. www.simplicity.com • Made in the U.S.A. Fabriqué aux États-Unis.

To be used for individual private home use only and not for commercial or manufacturing purposes. • A usage privé seulement et non à des fins commerciales ou de production en série. • Para uso privado solamente, no se puede utilizar con propósitos de comercialización o de producción en serie.