

S3022

**Simplicity**<sup>®</sup>



Designed and printed in USA.

Shop all the pattern brands you love @

**Simplicity**<sup>®</sup>.com

Average



A



B



C



D



E



F



G



H

**PLUSH CRITTERS**

**Suggested Fabrics:** A,B,C,D,E,F,G,H: Brocade, Cotton/Cotton Blends, Flannel, Fleece, Short Pile/Textured Fleece, Stable/Novelty Metallic, Velveteen. **Appliqués A,B,C,D,E,F,G,H:** Felt. **Wings C,D,E:** Cotton/Cotton Blends, Foil Dot, Novelty Metallic. **Interfacing D,E:** Heavyweight Craft.

**Notions:** A,B,C,D,E,F,G,H: Polyfil, fabric glue. **Also for C:** Fabric glue or fabric paint. **Also for D,E:** Fabric glue or fabric paint, 1¼ yd. (1.1m) of ¼" (2.2cm) flexible trim such as sequin trim or jumbo rick rack. **Also for F,G:** ¼ yd. (0.8m) of ¾" - 1¾" (2cm - 3cm) pre-gathered lace trim or single-edge scalloped metallic lace trim.

**Dimensions:** A,E,F - 9" x 11" (23cm x 28cm)      B,C,D,G,H - 8" x 9½" (20cm x 24cm)

**Eye Appliqués A,B,C,D,E,F,G,H** - 3" x 4" (8cm x 10cm) in each of felt and paper baked fusible web remnants

**Snake A**

13" x 15" (33cm x 38cm) remnants each of fabric and contrast

**Snake B**

11" x 13" (28cm x 33cm) remnants each of fabric and contrast

**Dragon C**

11" x 13" (28cm x 33cm) remnants each of fabric and contrast

**Wings C,D,E** - 8" x 8" (20cm x 20cm) remnants in each of fabric and interfacing  
**Paper-backed Fusible Web C,D,E** - 4" x 8" (10cm x 20cm) remnant

**Dragon D**

13" x 19" (33cm x 48cm) remnants each of fabric and contrast

**Dragon E**

15" x 20" (38cm x 51cm) remnants each of fabric and contrast  
**Ear Appliqués E** - 3" x 4" (8cm x 10cm) felt remnant

**Axolotl F**

15" x 19" (38cm x 48cm) remnant  
**Contrast (Body)** - 13" x 15" (33cm x 38cm) remnant

**Axolotl G**

13" x 23" (38cm x 58cm) remnant  
**Contrast (Body)** - 11" x 13" (28cm x 33cm) remnant

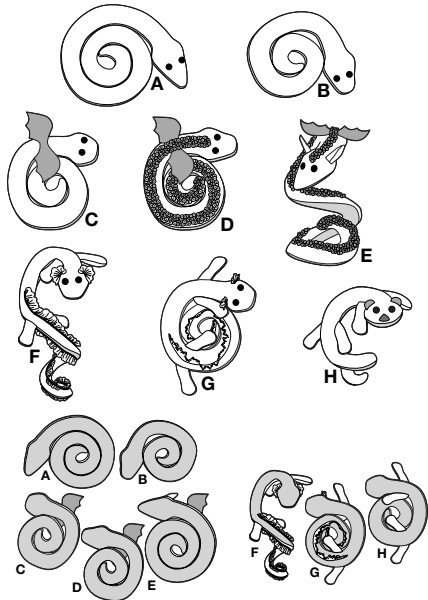
**Otter H**

13" x 23" (38cm x 58cm) remnant  
**Contrast (Body)** - 11" x 13" (28cm x 33cm) remnant  
**Ear Appliqués H** - 2" x 4" (5cm x 10cm) felt remnant  
**Nose Appliqués H** - 2" x 4" (5cm x 10cm) felt remnant

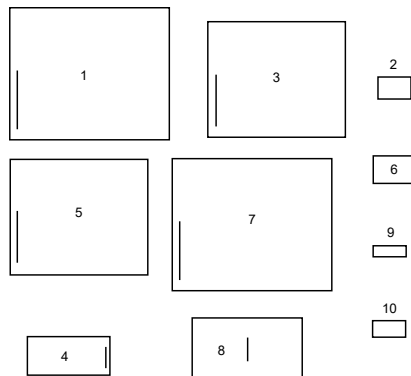
\*with nap    \*\*without nap

# Simplicity® S3022

Thank you for purchasing this Simplicity pattern. We made every effort to provide you with a high quality product.

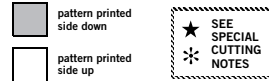


10 PIECES



- 1 BODY - A,E
- 2 EYE APPLIQUE - A,B,C,D,E,F,G,H
- 3 BODY - B,D
- 4 WINGS - C,D,E
- 5 BODY - C,G,H
- 6 EAR - E
- 7 BODY - F
- 8 LEGS - F,G,H
- 9 NOSE APPLIQUE - H
- 10 EARS - H

## Cutting Layouts



POSITION OF PATTERN PIECES MAY VARY SLIGHTLY ACCORDING TO YOUR PATTERN SIZE

### General Directions For Cutting

**PRE-SHRINK** and iron all fabric.

**FOR DOUBLE THICKNESS** -Fold fabric with RIGHT sides together. Pin pattern to WRONG side of fabric.

**FOR SINGLE THICKNESS** -Pin pattern to RIGHT side of fabric.

★ If layout shows a piece extending past fold, cut out all pieces except piece that extends. Open out fabric to single thickness. Cut extending piece on RIGHT side of fabric in position shown.

✱ Mark small arrows along both selvages indicating direction of nap or design. Fold fabric crosswise with RIGHT sides together, and cut along fold. Turn one fabric layer around so arrows on both layers go in the same direction. Place RIGHT sides together.

### EYE APPLIQUES A,B,C,D,E,F,G,H

CUT ONE OF PATTERN BLOCK 2 FROM FELT AND PAPER BACKED FUSIBLE WEB REMNANTS

### SNAKE A

CUT ONE OF PATTERN BLOCK 1 EACH OF FABRIC AND CONTRAST REMNANTS

### SNAKE B

CUT ONE OF PATTERN BLOCK 3 EACH OF FABRIC AND CONTRAST REMNANTS

### DRAGON C

CUT ONE OF PATTERN BLOCK 5 EACH OF FABRIC AND CONTRAST REMNANTS

### WINGS C,D,E

CUT TWO OF PATTERN BLOCK 4 EACH OF FABRIC AND INTERFACING REMNANTS

### PAPER BACKED FUSIBLE WEB C,D,E

CUT ONE OF PATTERN BLOCK 4 FROM PAPER BACKED FUSIBLE WEB REMNANT

### DRAGON D

CUT ONE OF PATTERN BLOCK 3 FROM FABRIC AND CONTRAST REMNANTS

### DRAGON E

CUT ONE OF PATTERN BLOCK 1 EACH OF FABRIC AND CONTRAST REMNANTS

### EAR APPLIQUE E

CUT ONE OF PIECE 6 FROM FELT REMNANT

### AXOLOTL F

CUT ONE OF PATTERN BLOCK 7 AND TWO OF PIECE 8 FROM FABRIC REMNANTS

### CONTRAST F (BODY)

CUT ONE OF PATTERN BLOCK 7 FROM CONTRAST REMNANT

### AXOLOTL G

CUT ONE OF PATTERN BLOCK 5 AND TWO OF PIECE 8 FROM FABRIC REMNANTS

### CONTRAST G (BODY)

CUT ONE OF PATTERN BLOCK 5 FROM CONTRAST REMNANT

### OTTER H

CUT ONE OF PATTERN BLOCK 5 AND TWO OF PIECE 8 FROM FABRIC REMNANTS

### CONTRAST H (BODY)

CUT ONE OF PATTERN BLOCK 5 FROM CONTRAST REMNANT

### NOSE APPLIQUE H

CUT ONE OF PATTERN BLOCK 9 FROM FELT AND PAPER BACKED FUSIBLE WEB REMNANT

### EAR APPLIQUE H

CUT ONE OF PIECE 10 FROM FELT REMNANT

## SEWING TUTORIALS



Build your skills viewing short, easy-to-follow videos at [simplicity.com/sewingtutorials](https://simplicity.com/sewingtutorials)

## Sewing Directions



Read **General Directions** before you begin.

Sewing methods shown in *ITALICS* are defined below:

**GATHER** – Loosen needle tension slightly. With RIGHT side up, stitch close to straight edge using a long stitch.

**STUFF** – Pull fiberfill apart and fluff it, breaking apart lumps and thick spots. Use pieces about the size of a golf ball. Pack into place using the end of a long handled wooden spoon or chopstick. Pack firmly in place each time stuffing is added. Use both hands to mold and shape, being careful not to over stuff or make lopsided.

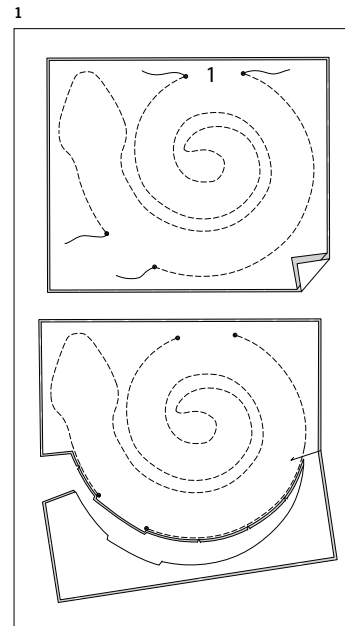
**PATTERN PIECES WILL BE IDENTIFIED BY NUMBERS THE FIRST TIME THEY ARE USED.**

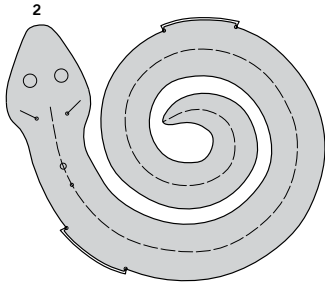
**STITCH 5/8" (1.5CM) SEAMS WITH RIGHT SIDES TOGETHER UNLESS OTHERWISE STATED.**

### SNAKE A, B; DRAGON C, D, E; AXOLOTL F, G; OTTER H

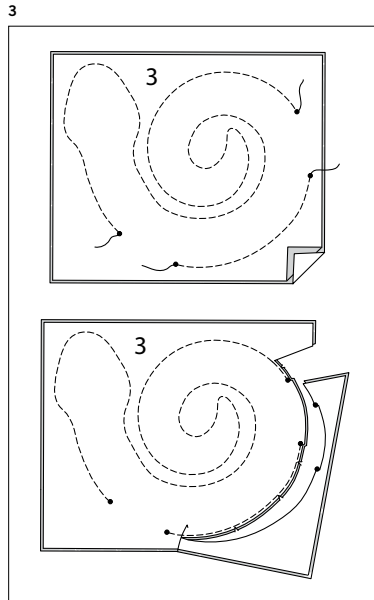
### SNAKE A; DRAGON E

1. Cut BODY (1) tissue block along outer solid line. Place contrast fabric (underbody) over corresponding fabric (topside) section with RIGHT sides together. Pin pattern to WRONG side of contrast fabric (underbody). Transfer stitching lines. Stitch along stitching lines, leaving an opening between sets of small dots for turning. Trim seam 1/8" (3mm) from stitching and 1/4" (6mm) between small dots; clip curves.

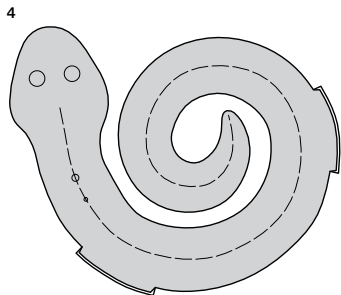




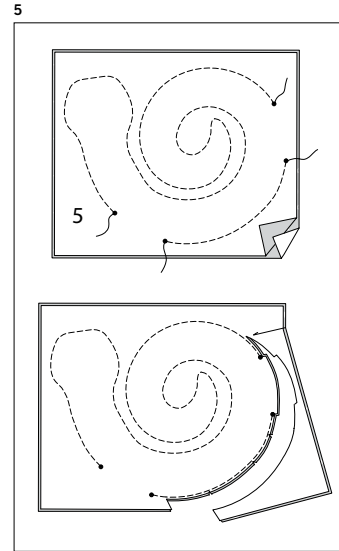
2. Turn reptile; press. Transfer markings to RIGHT side of fabric (topside), using a washable fabric marking pen or pencil.



3. Cut BODY (3) tissue block along outer solid line. Place contrast fabric (underbody) over corresponding fabric (topside) section with RIGHT sides together. Pin pattern to WRONG side of contrast fabric (underbody). Transfer stitching lines. Stitch along stitching lines, leaving an opening between sets of small dots for turning. Trim seam 1/8" (3mm) from stitching and 1/4" (6mm) between small dots; clip curves.

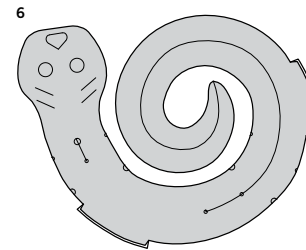


4. Turn reptile; press. Transfer markings to RIGHT side of fabric (topside), using a washable fabric marking pen or pencil.

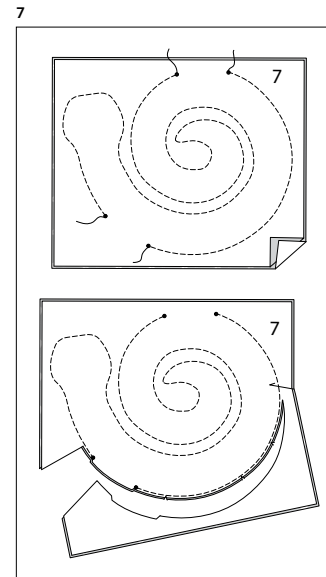


### DRAGON C; AXOLOTL G; OTTER H

5. Cut BODY (5) tissue block along outer solid line. Place contrast fabric (underbody) over corresponding fabric (topside) section with RIGHT sides together. Pin pattern to WRONG side of contrast fabric (underbody). Transfer stitching lines. Stitch along stitching lines, leaving an opening between sets of small dots for turning. Trim seam 1/8" (3mm) from stitching and 1/4" (6mm) between small dots; clip curves.

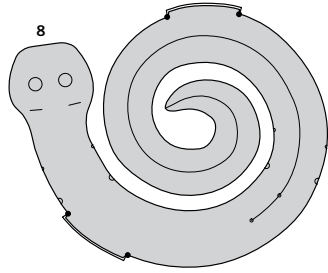


6. Turn critter; press. Transfer markings to RIGHT side of fabric (topside) and to contrast fabric (underside) for **View G**, using a washable fabric marking pen or pencil.



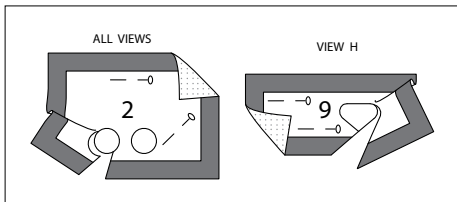
### AXOLOTL F

7. Cut BODY (7) tissue block along outer solid line. Place contrast fabric (underbody) over corresponding fabric (topside) section with RIGHT sides together. Pin pattern to WRONG side of contrast fabric (underbody). Transfer stitching lines. Stitch along stitching lines, leaving an opening between sets of small dots for turning. Trim seam 1/8" (3mm) from stitching and 1/4" (6mm) between small dots; clip curves.



8. Turn critter; press. Transfer markings to RIGHT side of fabric (topside) and to contrast fabric (underside), using a washable fabric marking pen or pencil.

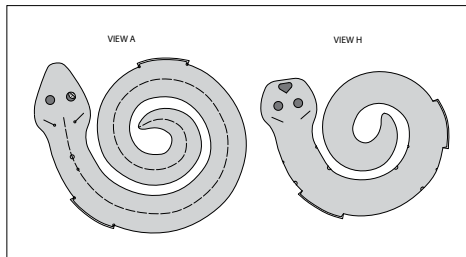
9



#### CONTINUE AS FOLOWS FOR ALL VIEWS

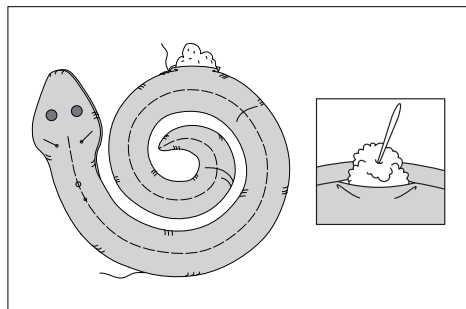
9. To prepare appliqué EYE APPLIQUE (2), apply paper backed fusible web to WRONG side of appliqué fabric following manufacturer's directions. Cut appliqué tissue block along outer solid line. Pin pattern to RIGHT side of prepared fabric. Cut out each appliqué. Transfer markings to RIGHT side of appliqué using a washable fabric marking pen or pencil. Prepare NOSE APPLIQUE (9) for View H in the same manner.

10



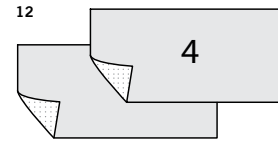
10. Pin eye appliqué, and nose appliqué for View H, to fabric body between broken lines. Fuse in place, following manufacturer's directions.

11

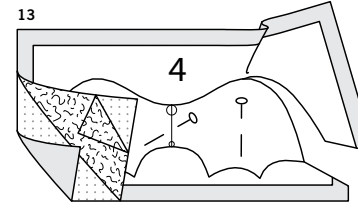


11. **STUFF** critter. Slipstitch opening closed.

#### WINGS C, D, E

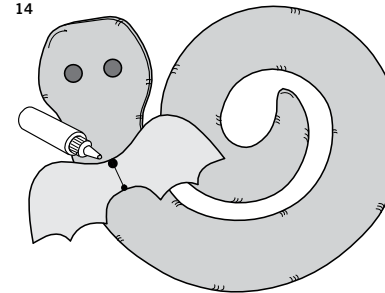


12. Pin interfacing to WRONG side of two WINGS (4) fabric remnant sections. Fuse interfacing in place following manufacturer's directions.



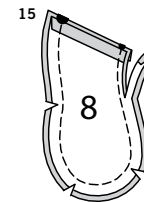
13. Apply paper backed fusible web to WRONG side of one wing remnant and fuse following manufacturer's directions. Fuse remnant sections with WRONG sides together. Cut tissue block along outer solid line. Pin pattern to RIGHT side of wing fabric, and cut out wing. Transfer markings to RIGHT side of fabric using a washable fabric marking pen or pencil. Allow to dry before adding to body.

14

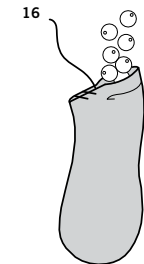


14. On OUTSIDE, pin wing to center front of body, matching small and large dots. Hand-stitch or glue in place along stitching line.

#### LEGS F, G, H

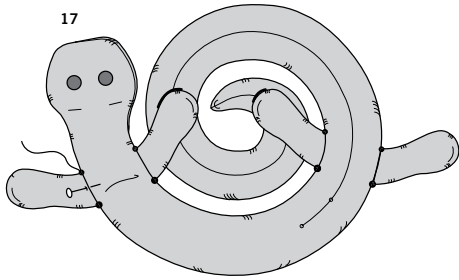


15. To make four legs, press under straight edges along seamline. With RIGHT sides together and raw edges even, pin leg sections, matching small and large dots. Stitch, leaving an opening between large and small dots. Trim seam; clip curves.



16. Turn legs. **STUFF**, using pieces the size of large marbles to start. Slipstitch opening closed.

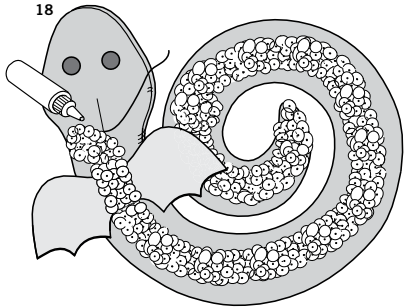
17



17. On OUTSIDE, pin legs to side edges of body between the small and large dots. Slipstitch in place, invisibly.

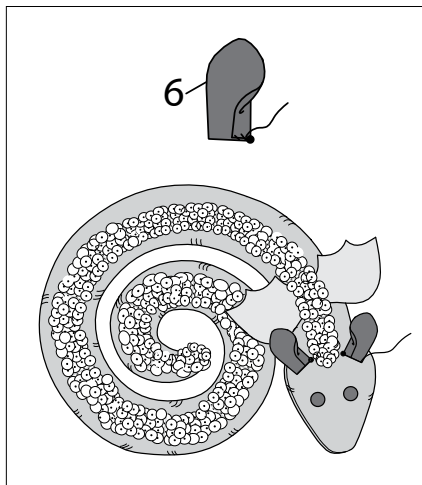
TRIM D, E

18



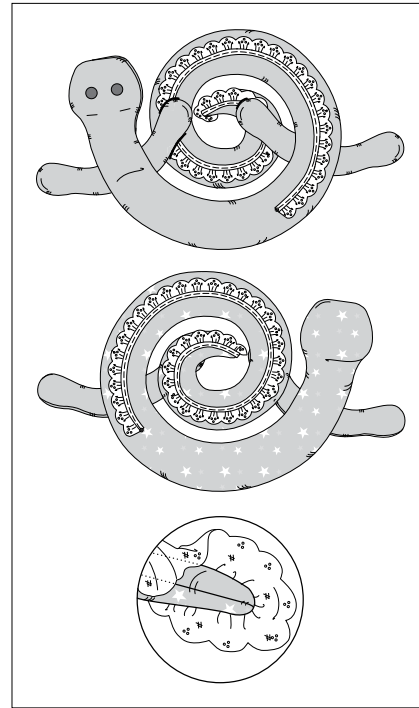
18. Cut a piece of flexible trim the length of the center placement line. Pin center of trim to placement line (over wing); hand-tack or glue in place.  
**TIP** – If necessary, cut trim about 1/2" (1.3cm) longer than length of placement line and turn under raw edges.

19



19. **EAR E** – Fold EAR (6) sections along foldline; pin. Pin straight edge of ear to body along placement line, matching small dots. Slipstitch in place, invisibly.

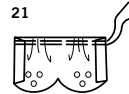
20



TRIM F, G

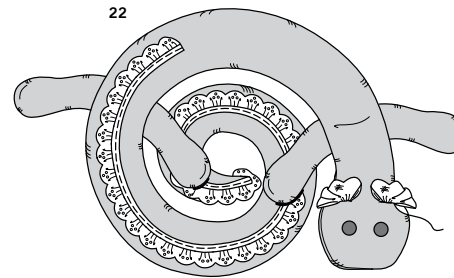
20. Cut a piece of pre-gathered lace or single edge scalloped trim the length of the center placement line of axolotl topside and underside. Pin straight edge of trim to placement line from topside small dot to underside small dot (wrapping tail); slipstitch in place, invisibly.  
**TIP** – If necessary, cut trim about 1/2" (1.3cm) longer than length of placement line and turn under raw edges.

21



21. To make ears, cut a piece of lace or trim the length of the placement line for ear, plus 3/4" (2cm). Dependent on chosen trim, trim, fold under ends, and **GATHER** straight edge, until an appealing ear segment is attained.

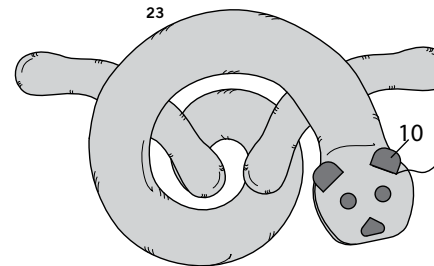
22



22. Pin ears to straight placement lines on head and slipstitch in place, invisibly.

EARS H

23



23. Pin straight edge of EAR (10) to body along placement line. Slipstitch in place, invisibly.



# Congrats!

You've completed your sewing adventure

---

**SHARE  
YOUR** LOOK



Post your pattern and tag us  
[@simplicity\\_creative\\_group](#) and [#simplicitypatterns](#)  
for a chance to be featured on our social media.

Look for more PDF patterns at [simplicity.com](https://www.simplicity.com)

Have a question or need help with your sewing project call us at  
1-888-588-2700



Simplicity ©2024 a division of IG Design Group Americas Inc. • Atlanta, GA 30342 USA [www.thedesigngroup.com](http://www.thedesigngroup.com) • All Rights Reserved. [www.simplicity.com](http://www.simplicity.com) • Made in the U.S.A. Fabriqué aux États-Unis.

To be used for individual private home use only and not for commercial or manufacturing purposes. • A usage privé seulement et non à des fins commerciales ou de production en série. • Para uso privado solamente, no se puede utilizar con propósitos de comercialización o de producción en serie.