

S3021

Simplicity[®]



Designed and printed in USA.

easy-to-sew

Easy

MISSES' APRONS AND PANT APRONS

Suggested Fabrics: A,B,C,D: Chambray, Cotton/Cotton Blends, Denim, Linen, Twill.

Notions: A,B,C,D: 1" (2.5cm) twill tape: A,C, 3½ yds. (3.2m) for B,D, 3¼ yds. (3.0m)

Sizes	XS (4-6)	S (8-10)	M (12-14)	L (16-18)	XL (20-22)	
Sizes-European	30-32	34-36	38-40	42-44	46-48	

Apron A	45"	1%	2%	2%	2½	2½	Yds.
	115cm*	1.5	2.2	2.2	2.3	2.3	m

Apron B	45"	1%	1%	1%	1%	1%	Yds.
	115cm*	1.0	1.5	1.5	1.5	1.5	m

Contrast (Bib, Apron Base, Pockets)	45"	1½	1%	1%	1%	1%	Yds.
	115cm*	1.4	1.4	1.5	1.5	1.5	m

Apron C	45"	2½	2½	3	3	3	Yds.
	115cm*	2.6	2.6	2.7	2.7	2.7	m

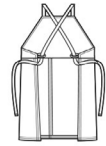
Contrast (Upper Pockets, Lower Pockets) 45" - ¾ yd. (115cm* - 0.3m)

Apron D	45"	3½	3%	3%	3%	3¾	Yds.
	115cm*	3.2	3.2	3.3	3.3	3.3	m

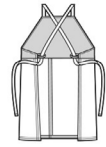
FINISHED GARMENT MEASUREMENTS (Includes Design and Wearing Ease)

Finished side length from waist						
Apron A,B	23	23½	24	24½	25	Ins.
	(58)	(59)	(61)	(62)	(64)	cm
Apron C,D	32½	33	33½	34	34½	Ins.
	(83)	(84)	(85)	(86)	(89)	cm

*with nap **without nap



A



B



C



D

Shop all the pattern brands you love @

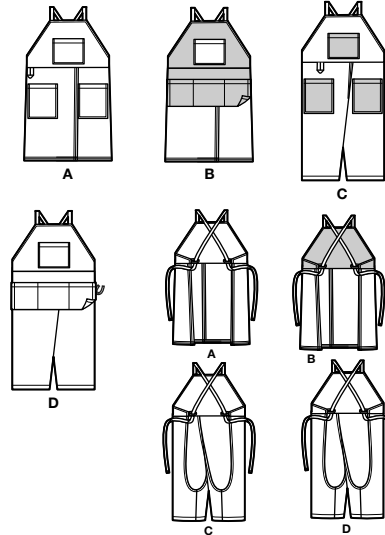
Simplicity[®].com

Simplicity[®]
by design

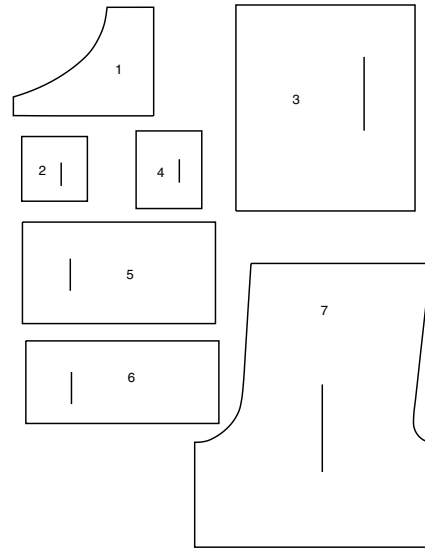
Simplicity ©2024 a division of IG Design Group Americas Inc. • Atlanta, GA 30342 USA www.thedesigngroup.com • All Rights Reserved. www.simplicity.com • Made in the U.S.A. Fabriqué aux États-Unis.
To be used for individual private home use only and not for commercial or manufacturing purposes. • A usage privé seulement et non à des fins commerciales ou de production en série. • Para uso privado solamente, no se puede utilizar con propósitos de comercialización o de producción en serie.

Simplicity®

Thank you for purchasing this Simplicity pattern. We made every effort to provide you with a high quality product.



7 PIECES



- 1 BIB - A,B,C,D
- 2 UPPER POCKET - A,B,C,D
- 3 APRON - A,B
- 4 LOWER POCKET - A,C
- 5 APRON BASE - B,D
- 6 POCKETS - B,D
- 7 APRON - C,D

General Directions

The Pattern

- SYMBOLS**
- GRAIN LINE Place on straight grain of fabric parallel to selvage
 - PLACE SOLID LINE on fold of fabric.
 - CENTER FRONT OR BACK of garment.
 - NOTCHES
 - DOTS
 - CUTTING LINE
 - LENGTHEN OR SHORTEN LINES

SEAM ALLOWANCE: 5/8" (1.5cm) unless otherwise stated is included but not printed on MULTI-SIZE PATTERNS. Mark your size with colored felt tip pen. See chart on tissue for how to use MULTI-SIZE PATTERNS.

ADJUST IF NEEDED
Make adjustments before placing pattern on fabric.

TO LENGTHEN:
Cut pattern between lengthen or shorten lines. Spread pattern evenly, the amount needed and tape to paper.

TO SHORTEN:
At lengthen or shorten lines, make an even pleat taking up amount needed. Tape in place.

When lengthen or shorten lines are not given, make adjustments at lower edge of pattern.

Cutting/Marking

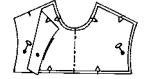
BEFORE CUTTING:
PRESS pattern pieces with a warm dry iron. PRE-SHRINK fabric by pre-washing washables or steam-pressing non-washables.

CIRCLE your cutting layout.
PIN pattern to fabric as shown in Cutting Layouts.

- FOR DOUBLE THICKNESS: Fold fabric with RIGHT sides together.
- FOR SINGLE THICKNESS: Place fabric RIGHT side up.
- FOR PILE, SHADED OR ONE WAY DESIGN FABRICS: Use "with nap" layouts

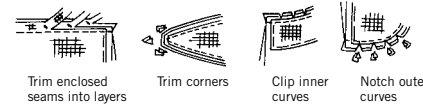
AFTER CUTTING:
Transfer markings to WRONG side of fabric before removing pattern. Use pin and chalk method or dressmaker's tracing paper and wheel.

- To Quick Mark:**
- Snip edge of fabric to mark notches, ends of fold lines and center lines.
 - Pin mark dots.



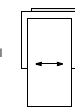
Sewing

- SEW garment following **Sewing Directions**.
- PIN or machine-baste seams matching notches.
- STITCH 5/8" (1.5 cm) seams unless otherwise stated.
- PRESS seams open unless otherwise indicated clipping when necessary so seams will lie flat.
- TRIM seams to reduce bulk, as shown below.

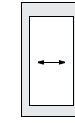


SPECIAL CUTTING NOTES

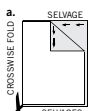
★ If layout shows a piece extending past fold, cut out all pieces except piece that extends.



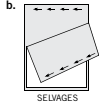
Open out fabric to single thickness. Cut extending piece on RIGHT side of fabric in position shown.



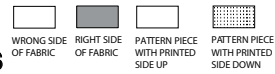
✱ Mark small arrows along both selvages indicating direction of nap or design. Fold fabric crosswise with RIGHT sides together, and cut along fold (a).



Turn one fabric layer around so arrows on both layers go in the same direction. Place RIGHT sides together (b).



Cutting Layouts

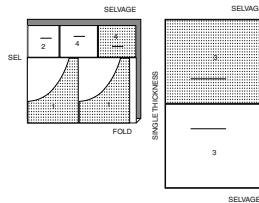


★ SEE SPECIAL CUTTING NOTES

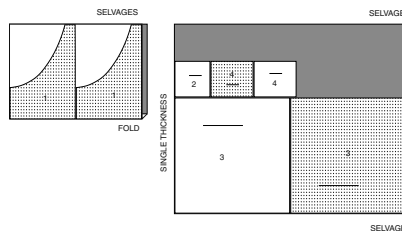
POSITION OF PATTERN PIECES MAY VARY SLIGHTLY ACCORDING TO YOUR PATTERN SIZE

APRON A USE PIECES 1 2 3 4

45" (115CM)
WITH NAP
SIZES XS

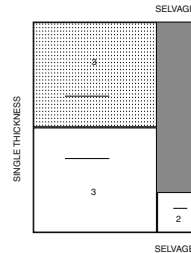


45" (115CM)
WITH NAP
SIZES S M L XL

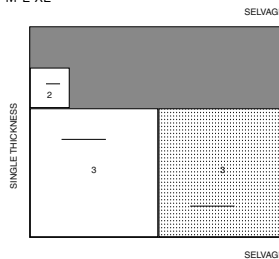


APRON B USE PIECES 2 3

45" (115CM)
WITH NAP
SIZES XS

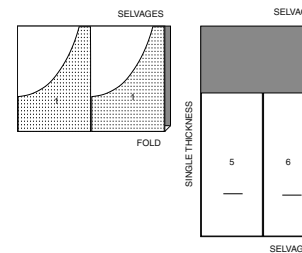


45" (115CM)
WITH NAP
SIZES S M L XL



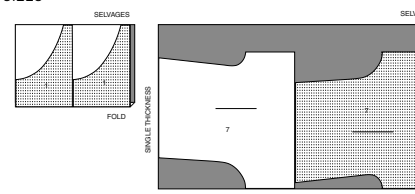
CONTRAST (BIB, APRON BASE AND POCKETS) USE PIECES 1 5 6

45" (115CM)
WITH NAP
ALL SIZES



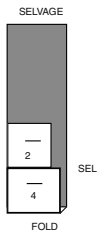
APRON C USE PIECES 1 7

45" (115CM)
WITH NAP
ALL SIZES



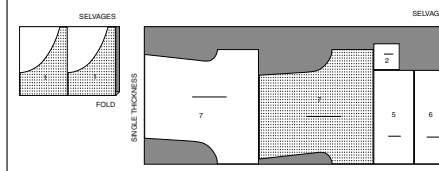
CONTRAST (UPPER POCKETS, LOWER POCKETS) USE PIECES 2 4

45" (115CM)
WITH NAP
ALL SIZES



APRON D USE PIECES 1 2 5 6 7

45" (115CM)
WITH NAP
ALL SIZES



Sewing Directions

FABRIC KEY RIGHT SIDE WRONG SIDE INTERFACING LINING LINING

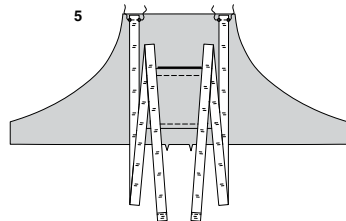
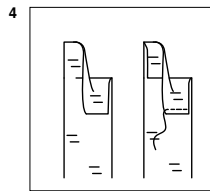
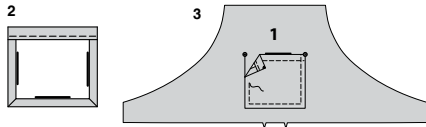
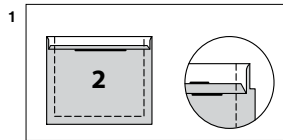
Read **General Directions** on page 1 before you begin.

Sewing methods in **BOLD TYPE** have Sewing Tutorial Video available. Scan **QR CODE** to watch videos:

SEWING TUTORIALS



Build your skills viewing short, easy-to-follow videos at [simplicity.com/sewingtutorials](https://www.simplicity.com/sewingtutorials)



EDGESTITCH - see **Machine Stitches: "how to edgestitch"** video,

TOPSTITCH - see **Machine Stitches: "how to topstitch"** video.

SLIPSTITCH - Slide needle through a folded edge, then pick up a thread of underneath fabric.

PATTERN PIECES WILL BE IDENTIFIED BY NUMBERS THE FIRST TIME THEY ARE USED.

STITCH SEAMS WITH RIGHT SIDES TOGETHER UNLESS OTHERWISE STATED.

NOTE: Under each sub-heading, the first view will be illustrated, unless otherwise illustrated.

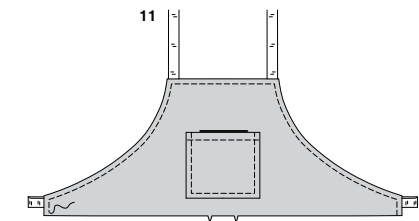
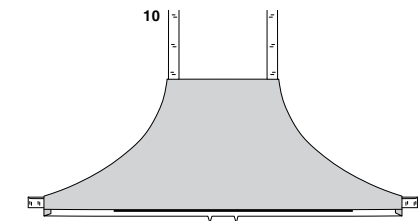
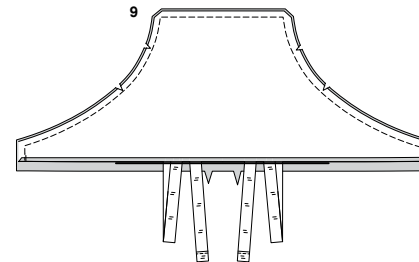
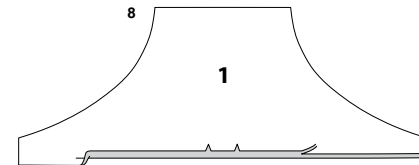
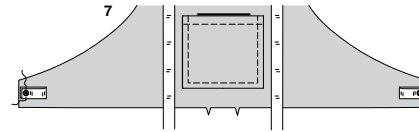
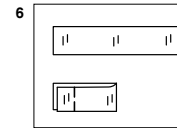
APRON A, B, C, D

UPPER POCKET AND BIB

1. Press under 1/4"(6mm) on upper edge of **UPPER POCKET** (2). Turn upper edge to **OUTSIDE** along foldline, forming facing. Stitch along seam line on raw edges. Trim seam allowance in the facing area to 1/4"(6mm).
2. Turn corners **RIGHT** side out, turning facing to the **WRONG** side. Press, pressing under raw edges along stitching, folding in corners. Stitch facing close to inner edge.
3. On **OUTSIDE**, pin pocket to one **BIB** (1) section, along placement lines, matching large dots. Stitch 1/4"(6mm) along sides and lower edge of pocket. (Remaining bib section will be used as facing.)
Optional: Stitch close to sides and lower edge of pocket.

TIES

4. For ties, cut two pieces of twill tape, each 56-1/2"(143.5cm) long. Turn in 3/4"(2cm) on one end of each tie and press. Turn in again 3/4"(2cm) and press. Stitch close to inner pressed edge.
5. With **RIGHT** sides together, pin free end of each tie to upper edge of bib between small dots. Baste.



LOOPS

6. For loops, cut two pieces of twill tape, each 4-1/2"(11.5cm) long. Fold loop in half, having raw edges even; baste raw edges.

7. On outside, pin loops to bib at side edges, centering over large dots; baste.

BIB FACING

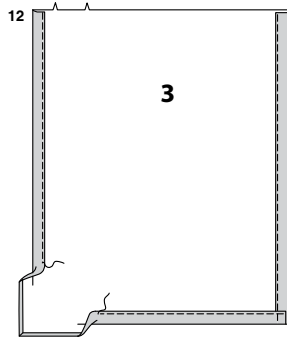
8. Press under 5/8"(1.5cm) on lower edge of bib **FACING** (1). Trim pressed edge to 3/8"(1cm).

9. With **RIGHT** sides together, pin facing to bib, matching notches and centers. Stitch, leaving notched edge free; trim seams.

10. Turn bib **RIGHT** side out, turning ties and loops out; press.

11. **TOPSTITCH** finished edges of bib.

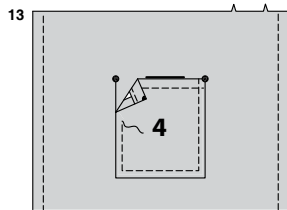
APRON A, B



- 12.** Turn up a 1-1/4*(3.2cm) hem on side edges of APRON (3). Press under 1/4*(6mm) on raw edge. Stitch close to inner pressed edge.
Optional: Stitch apron 1/4*(6mm) along side edges.
Hem lower edge of apron in the same manner as side edges.

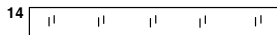
LOWER POCKETS A

Prepare LOWER POCKET (4) in the same manner as for upper pocket.



- 13.** On OUTSIDE, pin pocket to apron, along placement lines, matching large dots. Stitch 1/4*(6mm) along sides and lower edge of pocket.
OPTIONAL: Stitch close to sides and lower edge of pocket.

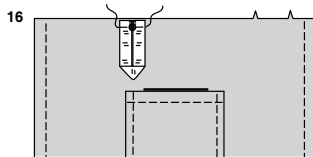
LOOP A



- 14.** For loop, cut one piece of twill tape 8-1/4*(21.3cm) long.

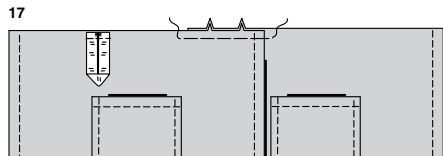


- 15.** Fold loop in half, as shown, having raw edges even. Tack ends together.



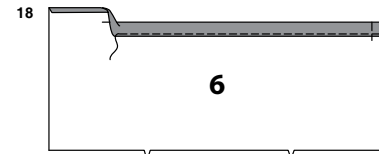
- 16.** On outside, pin loop to upper edge of right apron, centering over large dot; baste.

VIEWS A, B

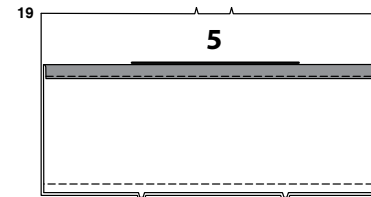


- 17.** With RIGHT sides up, lap right apron over left, matching notches and centers. Baste across upper edge.

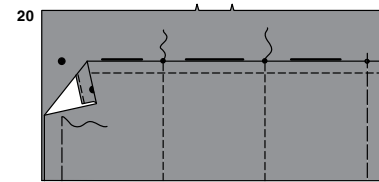
POCKETS AND APRON BASE B



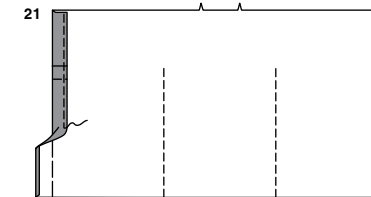
- 18.** Press under 1/4*(6mm) on upper edge of POCKETS (6). Turn upper edge to inside along foldline, forming facing. Stitch facing close to pressed inner edge; baste side edges.



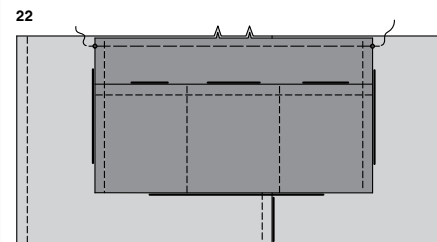
- 19.** Pin RIGHT side of pocket to WRONG side of APRON BASE (5), matching notches. Stitch notched edge; trim seam.



- 20.** Turn pocket to outside; press. Pin WRONG side of pockets to RIGHT side of apron base, matching dots, having raw edges even. Baste raw edges together. Stitch pocket to apron base along stitching lines, through all layers.

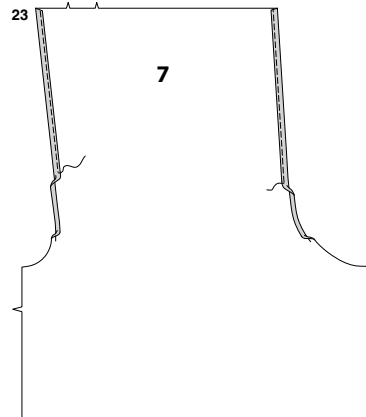


- 21.** Turn under a 1-1/4*(3.2cm) hem on side edges of apron base and pocket. Press under 1/4*(6mm) on raw edge. Stitch close to inner pressed edge.



- 22.** On outside, pin wrong side of apron base and pocket to right side of apron at upper edge, matching notches, dots, and center fronts. Baste.

APRON C, D



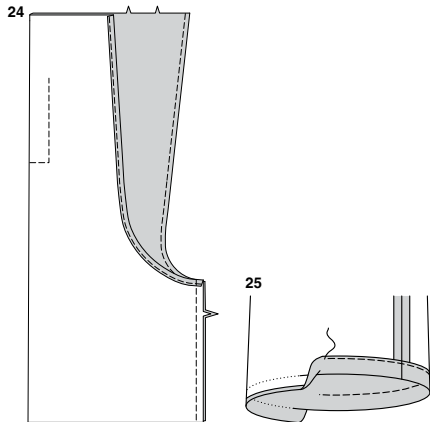
- 23.** Finish long curved edges of APRON (7) with a double hem. To make a double hem, turn under 3/8" (1cm) on long curved edges, easing where necessary. Turn under 3/8" (1cm) again; press. Stitch hem in place close to fold.

VIEW C

Prepare and apply LOWER POCKET (4) to apron in the same manner as for upper pocket.

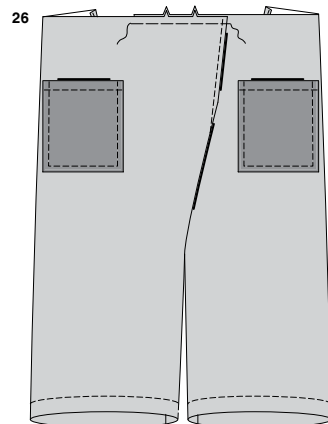
For loop, cut and apply twill tape loop to apron in the same manner as APRON A, B; LOOP A.

VIEWS C, D



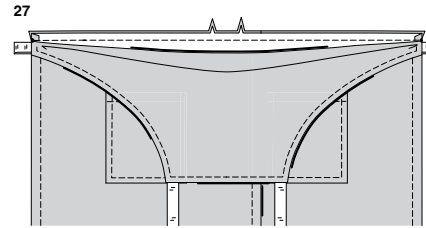
- 24.** With RIGHT sides together, pin side edges of apron, matching notches; stitch.

- 25.** Turn up a 1-1/4" (3.2cm) hem lower edge of apron. Press under 1/4" (6mm) on raw edge. Stitch close to inner pressed edge.
OPTIONAL: Stitch apron 1/4" (6mm) along lower edge.

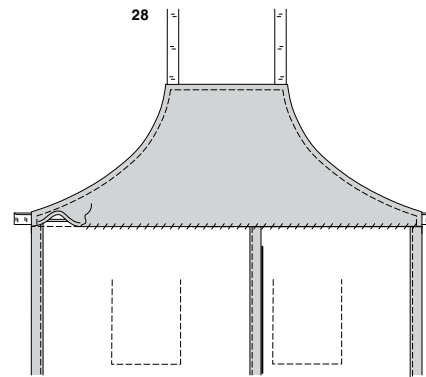


- 26.** With RIGHT sides up, lap right apron over left, matching notches and centers. Baste across upper edge.

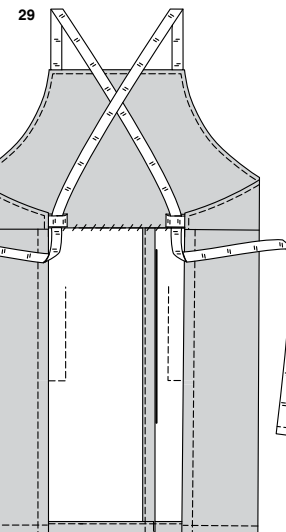
ATTACHING APRON TO BIB- ALL VIEWS



- 27.** Keeping bib facing free, pin apron to bib, RIGHT sides together, matching notches, center fronts and small dots. Stitch; trim seams.



- 28.** Turn seam toward bib, turning bib out; press. **SLIPSTITCH** press edge of bib over seam.



FINISHING

- 29.** To wear apron, cross ties on back. Insert ties through side loops and tie ends at back.



Congrats!

You've completed your sewing adventure

**SHARE
YOUR** LOOK



Post your pattern and tag us
[@simplicity_creative_group](#) and [#simplicitypatterns](#)
for a chance to be featured on our social media.

Look for more PDF patterns at simplicity.com

Have a question or need help with your sewing project call us at
1-888-588-2700



Simplicity ©2024 a division of IG Design Group Americas Inc. • Atlanta, GA 30342 USA www.thedesigngroup.com • All Rights Reserved. www.simplicity.com • Made in the U.S.A. Fabriqué aux États-Unis.

To be used for individual private home use only and not for commercial or manufacturing purposes. • A usage privé seulement et non à des fins commerciales ou de production en série. • Para uso privado solamente, no se puede utilizar con propósitos de comercialización o de producción en serie.