

S3020

Simplicity®

SEWN
ADAPTIVE®



✓ Accessible zipper options on one or both sides of jeans for accessible dressing ease depending on disability needs



✓ No front zip for fit and comfort



✓ Optional invisible zipper access to leg bag or prosthetic for comfort and convenience



Designed and printed in USA.

easy-to-sew



✓ No back pockets for comfort

UNISEX ADAPTIVE JEANS

Suggested Fabrics: Chino, Cotton Duck, Denim, Gabardine, Medium weight Cotton Types, Medium weight Linen Types, Twill. **Interfacing:** Lightweight Fusible.

Notions: Two 9" (23cm) zippers, 14" (36cm) invisible zipper(s) (for side leg opt.), ¾ yd. (0.4m) of ¼" (3mm) cord.

Sizes	34	36	38	40	42	44	46	48	50	52
European	44	46	48	50	52	54	56	58	60	62

BODY MEASUREMENTS: Select pattern size based on body measurements

Chest	34	36	38	40	42	44	46	48	50	52	Ins.
Waist	28	30	32	34	36	39	42	44	46	48	"
Hip	35	37	39	41	43	45	47	49	51	53	"
Neckband	14	14½	15	15½	16	16½	17	17½	18	18½	"

Jeans	45**	2½	2%	2%	2%	2¾	2¾	3	3	3	3	Yds.
	60**	1%	1%	2%	2%	2¼	2%	2%	2%	2%	2¾	"

Interfacing - 20" - ¾ yd.

FINISHED GARMENT MEASUREMENTS (Includes Design and Wearing Ease)

Waist	32	34	36	38	40	42	44	46	48	50	Ins.
Hip	39	41	43	45	47	49	51	53	55	57	"

Width, each leg

Jeans	38½	39	39½	40	40½	41	41½	42	42½	43	Ins.
-------	-----	----	-----	----	-----	----	-----	----	-----	----	------

Finished side length from waist

Jeans	16	16½	16½	16¾	17	17¼	17½	17¾	18	18½	Ins.
-------	----	-----	-----	-----	----	-----	-----	-----	----	-----	------

*with nap **without nap

Easy

Facile

JEAN ADAPTÉ UNISEXE

Tissus Conseillés: Chino, Coutil de coton, Denim, Gabardine, Types coton de poids moyen, Types toile de lin de poids moyen, Twill. **Entoilage:** Thermocollant léger.

Mercerie: 2 fermetures à glissière de 23cm, fermeture(s) à glissière invisible de 36cm (pour côté de la jambe facultatif), 0.4m de cordon de 3mm.

Tailles	34	36	38	40	42	44	46	48	50	52
Françaises/Eur	44	46	48	50	52	54	56	58	60	62

MESURES DU CORPS: Choisissez la taille du patron basée sur les mesures du corps

Poitrine	87	92	97	102	107	112	117	122	127	132	cm
Taille	71	76	81	87	92	99	107	112	117	122	"
Hanches	89	94	99	104	109	114	119	124	130	135	"
Bande du Col	35.5	37	38	39.5	40.5	42	43	44.5	45.5	47	"

Jean	115cm*	2.3	2.3	2.4	2.4	2.5	2.5	2.7	2.7	2.7	2.7	m
	150cm*	1.6	1.7	1.9	1.9	2.1	2.2	2.4	2.4	2.4	2.5	"

Entoilage - 51cm - 0.8m

MESURES DES VÊTEMENTS FINI (Motif et aisance de port compris)

Taille	81	86	91	97	102	107	112	117	122	127	cm
Hanches	99	104	109	114	119	124	130	135	140	145	"

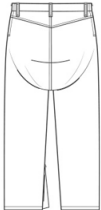
Largeur, chaque jambe

Jean	98	99	100	102	103	104	105	107	108	109	cm
------	----	----	-----	-----	-----	-----	-----	-----	-----	-----	----

Longueur finie – côté, taille à l'ourlet

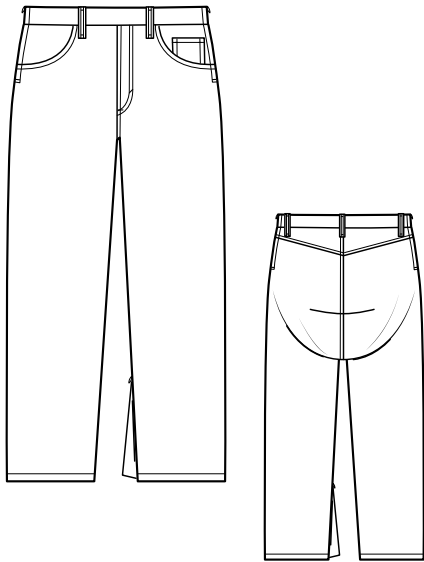
Jean	41	41	42	43	43	44	44	45	46	46	cm
------	----	----	----	----	----	----	----	----	----	----	----

*avec sens **sans sens

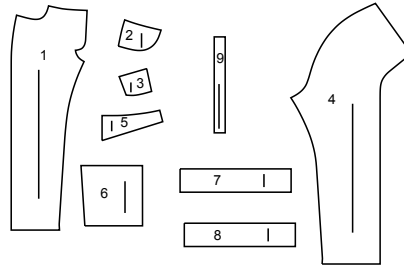


Simplicity®

Thank you for purchasing this Simplicity pattern.
We made every effort to provide you with a high quality product.



9 PIECES



- 1 Front
- 2 Side Front
- 3 Left Pocket
- 4 Back
- 5 Back Yoke
- 6 Inside Pocket
- 7 Front Waistband
- 8 Back Waistband
- 9 Carrier



www.simplicity.com



info@simplicity.com



1-888-588-2700

General Directions

The Pattern

- SYMBOLS**
- GRAIN LINE Place on straight grain of fabric parallel to selvage
 - PLACE SOLID LINE on fold of fabric.
 - CENTER FRONT OR BACK of garment.
 - NOTCHES
 - DOTS
 - CUTTING LINE
 - LENGTHEN OR SHORTEN LINES

SEAM ALLOWANCE: 5/8" (1.5cm) unless otherwise stated is included but not printed on MULTI-SIZE PATTERNS. Mark your size with colored felt tip pen. See chart on tissue for how to use MULTI-SIZE PATTERNS.

ADJUST IF NEEDED
Make adjustments before placing pattern on fabric.

TO LENGTHEN:
Cut pattern between lengthen or shorten lines. Spread pattern evenly, the amount needed and tape to paper.

TO SHORTEN:
At lengthen or shorten lines, make an even pleat taking up amount needed. Tape in place.

When lengthen or shorten lines are not given, make adjustments at lower edge of pattern.

Cutting/Marking

BEFORE CUTTING:

PRESS pattern pieces with a warm dry iron. PRE-SHRINK fabric by pre-washing washables or steam-pressing non-washables.

CIRCLE your cutting layout.

PIN pattern to fabric as shown in Cutting Layouts.

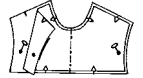
- FOR DOUBLE THICKNESS: Fold fabric with RIGHT sides together.
- FOR SINGLE THICKNESS: Place fabric RIGHT side up.
- FOR PILE, SHADED OR ONE WAY DESIGN FABRICS: Use "with nap" layouts

AFTER CUTTING:

Transfer markings to WRONG side of fabric before removing pattern. Use pin and chalk method or dressmaker's tracing paper and wheel.

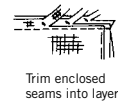
To Quick Mark:

- Snip edge of fabric to mark notches, ends of fold lines and center lines.
- Pin mark dots.

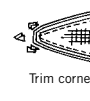


Sewing

- SEW garment following **Sewing Directions**.
- PIN or machine-baste seams matching notches.
- STITCH 5/8" (1.5 cm) seams unless otherwise stated.
- PRESS seams open unless otherwise indicated clipping when necessary so seams will lie flat.
- TRIM seams to reduce bulk, as shown below.



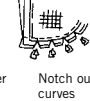
Trim enclosed seams into layers



Trim corners



Clip inner curves

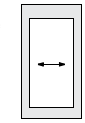
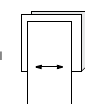


Notch outer curves

SPECIAL CUTTING NOTES

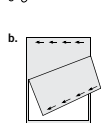
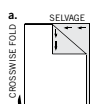
- ★ If layout shows a piece extending past fold, cut out all pieces except piece that extends.

Open out fabric to single thickness. Cut extending piece on RIGHT side of fabric in position shown.

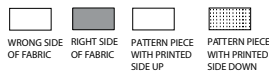


- ✱ Mark small arrows along both selvages indicating direction of nap or design. Fold fabric crosswise with RIGHT sides together, and cut along fold (a).

Turn one fabric layer around so arrows on both layers go in the same direction. Place RIGHT sides together (b).



Cutting Layouts

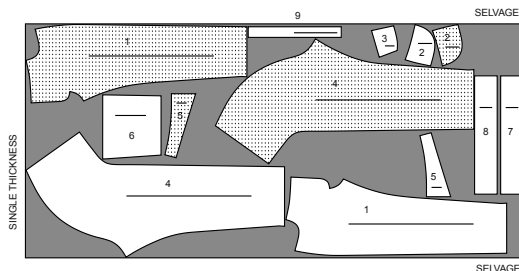


POSITION OF PATTERN PIECES MAY VARY SLIGHTLY ACCORDING TO YOUR PATTERN SIZE

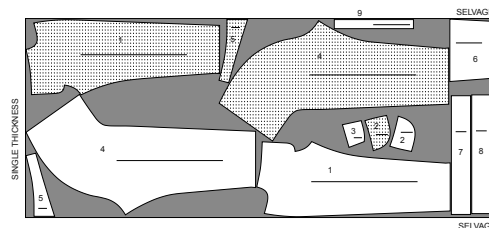
JEANS

USE PIECES 1 2 3 4 5 6 7 8 9

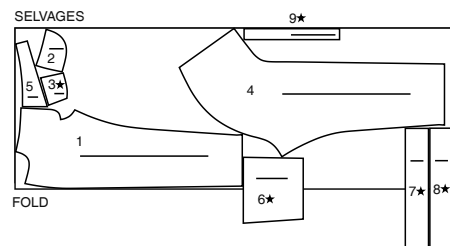
45" (115CM)
WITH NAP
SIZES 34 36 38 40 42 44



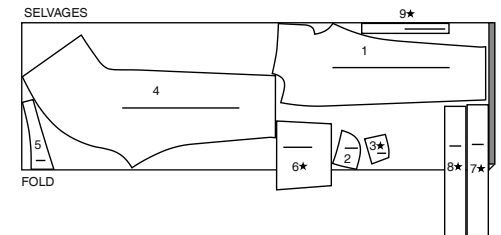
45" (115CM)
WITH NAP
SIZES 46 48 50 52



60" (150CM)
WITH NAP
SIZES 34 36 38 40 42 44



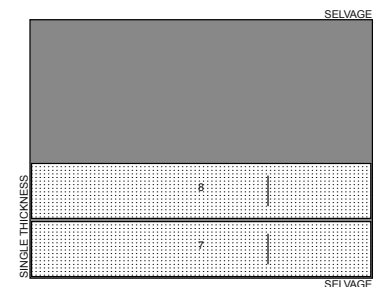
60" (150CM)
WITH NAP
SIZES 46 48 50 52



INTERFACING

USE PIECE 7 8

20" (51CM)
ALL SIZES



SEWING TUTORIALS



Build your skills viewing short, easy-to-follow videos at simplicity.com/sewingtutorials

Sewing Directions

FABRIC KEY RIGHT SIDE WRONG SIDE INTERFACING LINING LINING

Read **General Directions** on page 1 before you begin.

Sewing methods shown in **BOLD** are defined below:

BAR TACK – Stitch a 3/8" (1cm) long, narrow and tight zig-zag stitch where indicated in Sewing Directions.

EDGE FINISH – Zig-zag stitch or overlock stitch close to raw edge.

EDGESTITCH – Stitch close to finished edge or seam.

STAYSTITCH – Stitch 1/2" (1.3cm) from cut edge in direction of arrows. This stitching stays in permanently to prevent stretching on curved edges. (Shown only in the first illustration.)

TOPSTITCH – Stitch 1/4" (6mm) from edge, seam or previous stitching, using presser foot as guide, or stitch where indicated in instructions.

PATTERN PIECES WILL BE IDENTIFIED BY NUMBERS THE FIRST TIME THEY ARE USED.
STITCH 5/8" (1.5CM) SEAMS WITH RIGHT SIDES TOGETHER UNLESS OTHERWISE STATED.

ADAPTIVE JEANS

NOTE: An **EDGESTITCH**, **TOPSTITCH**, **BAR TACK**, and hem stitch can be a decorative element, if stitched in a contrasting color thread.

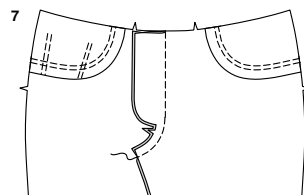
If you prefer, **EDGE FINISH** raw edges with a zigzag stitch or overlock stitch in the course of construction.

INTERFACING

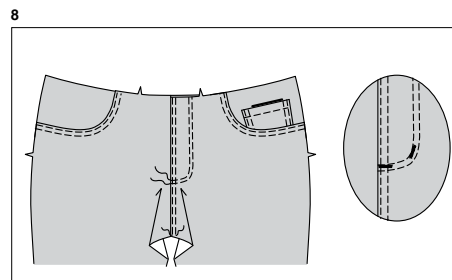
1. Pin interfacing to **WRONG** side of **FRONT WAISTBAND (7)** and **BACK WAISTBAND (8)**. Fuse interfacing in place following manufacturer's directions.

FRONT

2. Press under 1/4" (6mm) on upper edge of **LEFT POCKET (3)**. Turn upper edge to **OUTSIDE** 3/4" (2cm), forming facing. Stitch along seam line on side edges. Trim seam allowance in the facing area to 1/4" (6mm).
3. Turn corners **RIGHT** side out, turning facing to the **WRONG** side; press, pressing under raw edges along stitching. Stitch facing close to inner edge.
4. On **OUTSIDE**, pin pocket to **LEFT SIDE FRONT (2)**, matching large and small dots. **EDGESTITCH** close to side edges and **TOPSTITCH** pocket 1/4" (6mm) from previous stitching.
5. **STAYSTITCH** upper edge of **FRONT (1)**. Machine-stitch 3/8" (1cm) from upper side front edge. Press under upper side front edge along stitching, clipping seam allowance to stitching, as needed.
6. On **OUTSIDE**, lap front over side front, placing pressed edge along placement line. **EDGESTITCH** close to pressed edge and **TOPSTITCH** front 1/4" (6mm) from previous stitching.

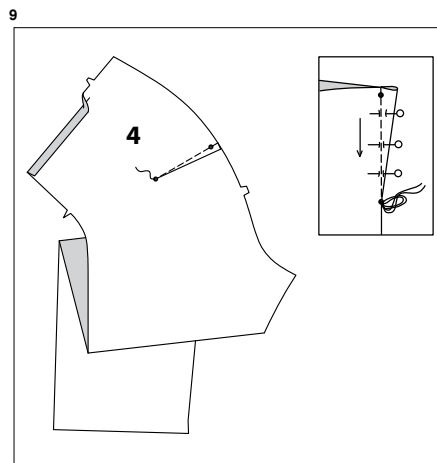


7. Stitch center front edges of front sections with **RIGHT** sides together. Press seam toward **LEFT** front.



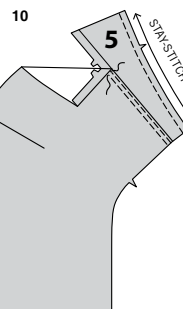
8. On **OUTSIDE**, **EDGESTITCH** **LEFT** front close to seam and **TOPSTITCH** along stitching line. **TOPSTITCH** **LEFT** front 1/4" (6mm) from previous stitching. Make **BAR TACK**(s) on **LEFT** front along stitching line, as shown.

BACK

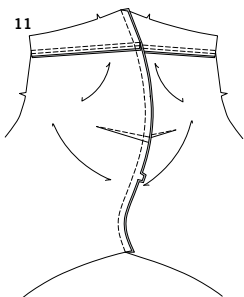


9. Press under upper (double notched) edge of **BACK (4)** along seam line. To make dart on back, with **RIGHT** sides together, fold the fabric through the center of the dart, bringing broken lines and small dots together. On **INSIDE**, place pins at **RIGHT** angles to the broken lines. Stitch the dart from wide end to point.

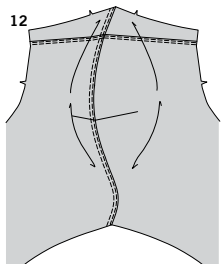
TIP: To prevent a "bubble" at the point, make the last few stitches right on the fold and leave the thread ends long enough to tie a knot. **DO NOT** back-stitch at the point.



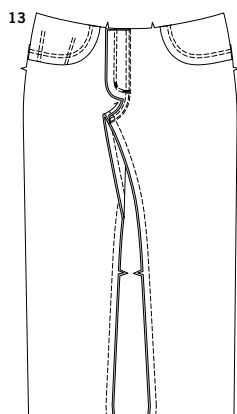
10. **STAYSTITCH** upper edge (single notched) edge of **BACK YOKE (5)**. On **OUTSIDE**, lap back over yoke back, placing pressed edge along seamline. **EDGESTITCH** close to pressed edge and **TOPSTITCH** back 1/4" (6mm) from previous stitching.



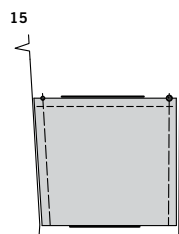
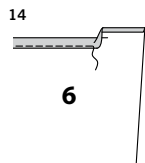
- 11.** With RIGHT sides together and raw edges even, pin center back edges of back. Stitch. Press seam toward LEFT back.



- 12.** On OUTSIDE, **EDGE**STITCH LEFT back close to seam and **TOP**STITCH 1/4" (6mm) from previous stitching.



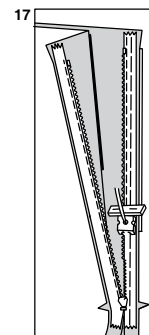
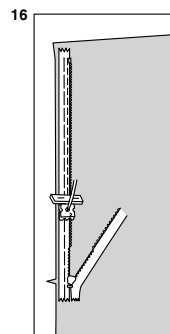
- 13.** If using the optional inner pocket and inner leg zipper, skip this step.
Pin front to back at inner leg edges. Stitch.



OPTIONAL LEFT LEG ZIPPER AND POCKET

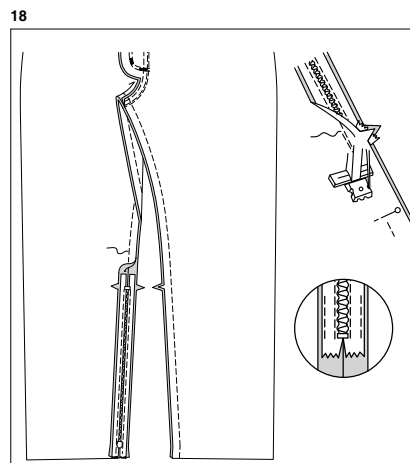
- 14.** Press under 1/4" (6mm) on upper edge of **INSIDE POCKET** (6). Turn pressed edge to **INSIDE** 3/4" (2cm), forming facing. Stitch close to inner pressed edge.

- 15.** On **INSIDE**, pin pocket to **LEFT** back pant leg, matching large and small dots. Baste side edges together.



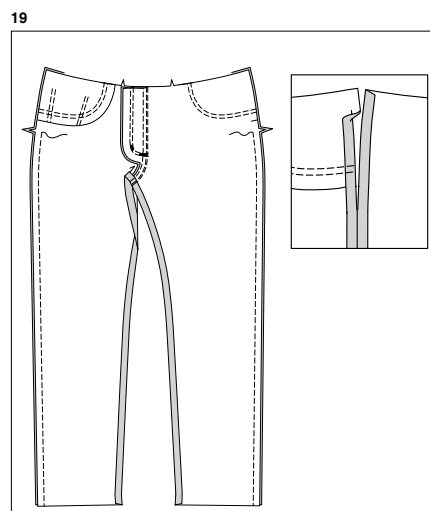
- 16.** Open the zipper and press the tape flat on the **WRONG** side unrolling the coils. Do not press the coils. (Use a low iron setting.) On **OUTSIDE**, pin **RIGHT** side of the zipper face down on the **RIGHT** side of the zipper opening. Have the coil along the seam line, the tape within the seam allowance and the top stop just under lower small dot, as shown. Hand-baste along center of the tape. Position zipper foot at the top of the zipper with **RIGHT** groove of the foot over coil. Stitch along tape to the notch. Back-stitch to reinforce.

- 17.** Pin the remaining half of the zipper to the **LEFT** side of the zipper opening in same manner. Make sure the upper and lower edges of the garment are even. Hand-baste along the center of the tape. Position zipper foot at the top of the zipper with **LEFT** groove over the coil. Stitch along tape to the notch. Back-stitch to reinforce.

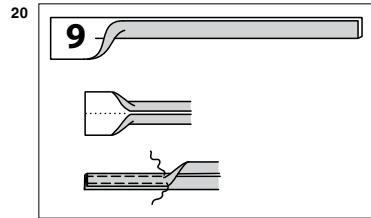


- 18.** Close zipper and check that it is invisible from the **OUTSIDE**. Pull the free ends of the zipper tape away from the seam allowance. Pin remaining left inner leg seam together above zipper. Position zipper foot all the way to the **LEFT** so the needle goes down through the outer notch of the foot. Start stitching seam 1/4" (6mm) above lowest stitch and slightly to the **LEFT**. Stitch seam for about 3" (7.5cm). Stitch remainder of inner leg seam, using your regular presser foot.
If you prefer, open out each seam allowance at end of zipper and stitch tape to seam allowance.

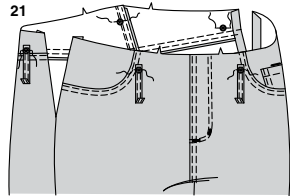
CONTINUE AS FOLLOWS



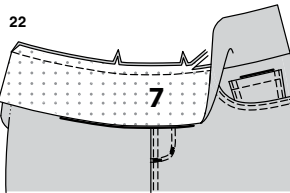
- 19.** With **RIGHT** sides together and raw edges even, pin front to back at side edges from lower edge to notch, back-stitching at notch to reinforce the seam. Press seam open, pressing under opening edges along seamlines.



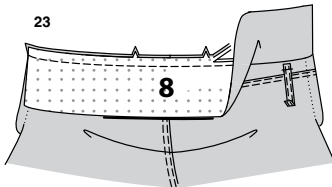
20. Fold CARRIER (9) in half, lengthwise with WRONG sides together. Press, setting in a crease. Open out long edges of carrier and turn them to WRONG side so they meet at the crease. Press. Fold carrier in half lengthwise, bringing pressed edges together. Stitch $1/8$ " (3mm) from both long edges.



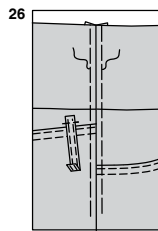
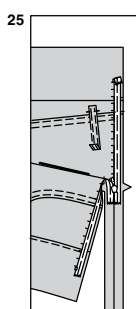
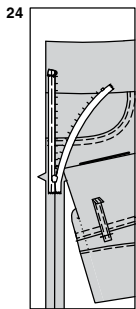
21. Cut carrier into five sections $3\text{--}1/2$ " (9cm) long. Press under $1/2$ " (1.3cm) on one end of each carrier. On OUTSIDE, pin open ends of carrier to pants lapping centers of large dots $1/2$ " (1.3cm). Stitch in place across dots.



22. With RIGHT sides together and raw edges even, pin FRONT WAISTBAND (7) to front, matching centers and notches. Stitch. Trim seam in layers. Press seam toward waistband.



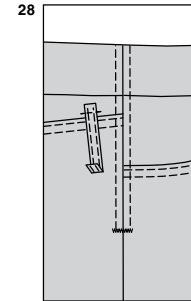
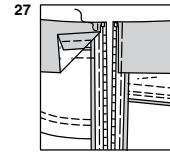
23. With RIGHT sides together and raw edges even, pin BACK WAISTBAND (8) to back, matching centers and notches. Stitch. Trim seam in layers. Press seam toward waistband.



24. Open out side opening edges, and with RIGHT sides together, turn down the back half of the pants at the notch. Open the zipper. On OUTSIDE, pin the zipper face down on the front side of the zipper opening. Have the outer edge of the teeth along the seamline, the tape within the seam allowance, and the top stop just below small dot, folding upper end of zipper tape away from seamline, as shown. Machine-baste along length of tape a scant $1/4$ " (6mm) from straight edge of zipper tape.

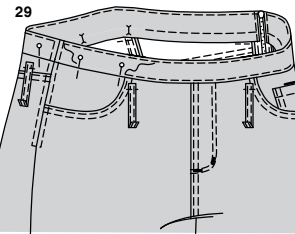
25. With RIGHT sides together, turn down the front half of the pants at notch. Machine-baste the remaining half of the zipper to the back side of the zipper opening in same manner.

26. Close zipper. On OUTSIDE, bring pressed, side edges together. Hand-baste in place.

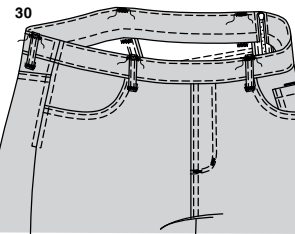


27. Turn waistband facing to INSIDE along foldline. Turn side edges of facing under, tapering toward basting.

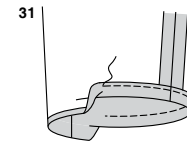
28. On OUTSIDE, stitch $1/4$ " (6mm) each side of side seam and stitch a **BAR TACK** across lower opening.



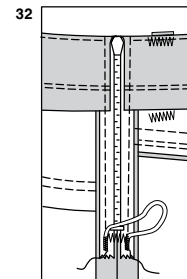
29. On INSIDE, trim away lower end of zipper tape to within $5/8$ " (1.5cm) of bar tack. Pin raw edge of facing over seam, placing pins on OUTSIDE. On OUTSIDE, **EDGE STITCH** upper edge of waistband, and lower edge of waistband, catching in facing on the inside breaking stitching at zippers.



30. Turn up carriers, bringing pressed edges to upper edge of waistband at large dots. Stitch in place with a **BAR TACK**. Make additional bar tacks at lower edges of carriers.



31. Press up hem along 1 " (2.5cm) hem allowance. Turn under raw edge $3/8$ " (1cm); press. **EDGE STITCH** close to inner pressed edge.



OPTIONAL PULL UP LOOPS

32. Cut two pieces of $1/8$ " (3mm) cord, 6 " (15cm) long. Fold loop in half. On INSIDE, place loop toward waistline with ends at lower edge of zipper tape. Securely stitch ends of loop to side seam allowances over zipper tape, as shown.



Congrats!

You've completed your sewing adventure

SHARE YOUR LOOK



Post your pattern and tag us
[@simplicity_creative_group](#) and [#simplicitypatterns](#)
for a chance to be featured on our social media.

Look for more PDF patterns at [simplicity.com](https://www.simplicity.com)

Have a question or need help with your sewing project call us at
1-888-588-2700



Simplicity ©2024 a division of IG Design Group Americas Inc. • Atlanta, GA 30342 USA www.thedesigngroup.com • All Rights Reserved. www.simplicity.com • Made in the U.S.A. Fabriqué aux États-Unis.

To be used for individual private home use only and not for commercial or manufacturing purposes. • A usage privé seulement et non à des fins commerciales ou de production en série. • Para uso privado solamente, no se puede utilizar con propósitos de comercialización o de producción en serie.