

S3019

Simplicity

SEWN ADAPTIVE



A



B



A



A



✓ Different closure options based on dexterity: Snaps, magnets or buttons



✓ Non constraining fit for mobility comfort

Designed and printed in USA.

Average

UNISEX ADAPTIVE SHACKETS

Suggested Fabrics: Cotton Types, Denim, Flannel, Gabardine, Medium weight Cotton Types, Medium weight Linen Types, Poplin, Sateen. **Lining:** Lining Fabric. **Interfacing:** Lightweight Fusible.

Notions: **A:** Ten 7/8" (2.2cm) buttons or medium to large snaps or magnets. **B:** Eight 7/8" (2.2cm) buttons or medium to large snaps or magnets.

Sizes	XS (30-32)	S (34-36)	M (38-40)	L (42-44)	XL (46-48)
European	40-42	44-46	48-50	52-54	56-58

BODY MEASUREMENTS: Select pattern size based on body measurements

	XS	S	M	L	XL	
Chest	30-32	34-36	38-40	42-44	46-48	Ins.
Waist	26-27	28-30	32-34	36-39	42-44	"
Hip	32-34	35-37	39-41	43-45	47-49	"

Lining A,B	45*** - 1/4 yd.					
Interfacing -	20" - 1 1/4 yds.					
Shacket A	45**	3	3	3 3/4	3 3/4	3 3/4 Yds.
	60**	2	2 1/4	2 1/4	2 3/4	"
Shacket B	45**	2 1/4	2 1/4	3	3 1/4	3 1/4 Yds.
	60**	1 1/4	1 1/4	2	2 1/4	"

FINISHED GARMENT MEASUREMENTS (Includes Design and Wearing Ease)

A,B Bust/Chest	45 1/2	49 1/2	53 1/2	57 1/2	61 1/2	Ins.
A,B Waist	45	49	53	57	61	"
Width, lower edge						
Shacket A	45	49	53	57	61	Ins.
Finished back length from base of neck						
Shacket A,B	26	26 1/2	27	27 1/2	28	Ins.

*with nap **without nap

Moins Facile

SHACKETS ADAPTÉ UNISEXE

Tissus Conseillés: Cotonnades, Denim, Flanelle, Gabardine, Types coton de poids moyen, Types toile de lin de poids moyen, Popeline, Satinette. **Doubleure:** Tissu à doubleure.

Entoilage: Thermocollant léger.

Mercerie: **A:** 10 boutons de 2.2cm ou boutons-pression moyens à grands ou aimants. **B:** 8 boutons de 2.2cm ou boutons-pression moyens à grands ou aimants.

Tailles	TP/XS	P/S	M	G/L	T6/XL
Françaises/ Eur	40-42	44-46	48-50	52-54	56-58

MESURES DU CORPS: Choisissez la taille du patron basée sur les mesures du corps

	TP/XS	P/S	M	G/L	T6/XL
Poitrine	76-81	87-92	97-102	107-112	117-122 cm
Taille	66-69	71-76	81-87	92-99	107-112 "
Hanches	82-87	89-94	99-104	109-115	119-124 "

Doubleure A,B	115cm** - 0.2m					
Entoilage -	51cm - 1.0m					

Shacket A	115cm*	2.7	2.7	2.7	3.1	3.2 m
	150cm*	1.8	1.9	1.9	2.4	2.5 "
Shacket B	115cm*	2.5	2.5	2.7	3.0	3.0 m
	150cm*	1.7	1.7	1.8	2.3	2.4 "

MESURES DES VÊTEMENTS FINI (Motif et aisance de port compris)

A,B Poitrine	116	126	136	146	156	cm
A,B Taille	114	124	135	145	155	"
Largeur à l'ourlet						
Shacket A	114	124	135	145	155	cm
Longueur finie – dos, votre nuque à l'ourlet						
Shacket A,B	66	67	69	70	71	cm

*avec sens **sans sens



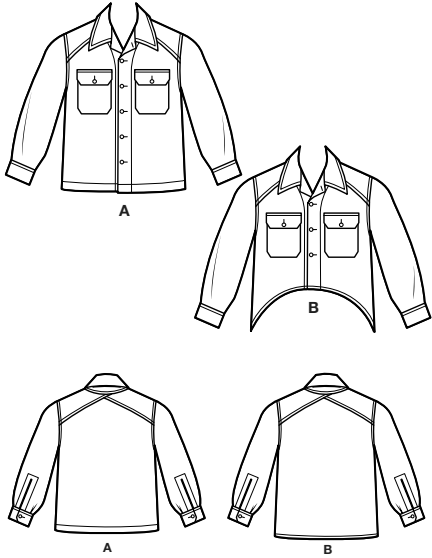
A



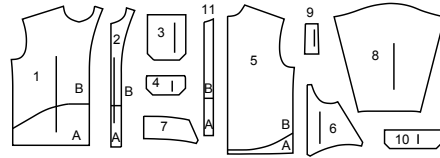
B

Simplicity®

Thank you for purchasing this Simplicity pattern. We made every effort to provide you with a high quality product.



11 PIECES



- 1 Front-A,B
- 2 Front Interfacing-A,B
- 3 Pocket-A,B
- 4 Flap-A,B
- 5 Back-A,B
- 6 Yoke Front and Back-A,B
- 7 Collar-A,B
- 8 Sleeve-A,B
- 9 Sleeve Facing-A,B
- 10 Cuff-A,B
- 11 Guide for Buttonholes-A,B

General Directions

The Pattern

- SYMBOLS**
- ↔ GRAIN LINE Place on straight grain of fabric parallel to selvage
 - ⇄ PLACE SOLID LINE on fold of fabric.
 - - - - - CENTER FRONT OR BACK of garment.
 - ∇ NOTCHES
 - ○ DOTS
 - CUTTING LINE
 - == LENGTHEN OR SHORTEN LINES

SEAM ALLOWANCE: 5/8" (1.5cm) unless otherwise stated is included but not printed on MULTI-SIZE PATTERNS. Mark your size with colored felt tip pen. See chart on tissue for how to use MULTI-SIZE PATTERNS.

ADJUST IF NEEDED
Make adjustments before placing pattern on fabric.

TO LENGTHEN:
Cut pattern between lengthen or shorten lines. Spread pattern evenly, the amount needed and tape to paper.

TO SHORTEN:
At lengthen or shorten lines, make an even pleat taking up amount needed. Tape in place.

When lengthen or shorten lines are not given, make adjustments at lower edge of pattern.

Cutting/Marking

BEFORE CUTTING:
PRESS pattern pieces with a warm dry iron. PRE-SHRINK fabric by pre-washing washables or steam-pressing non-washables.

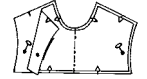
CIRCLE your cutting layout.
PIN pattern to fabric as shown in Cutting Layouts.

- FOR DOUBLE THICKNESS: Fold fabric with RIGHT sides together.
- FOR SINGLE THICKNESS: Place fabric RIGHT side up.
- FOR PILE, SHADED OR ONE WAY DESIGN FABRICS: Use "with nap" layouts

AFTER CUTTING:
Transfer markings to WRONG side of fabric before removing pattern. Use pin and chalk method or dressmaker's tracing paper and wheel.

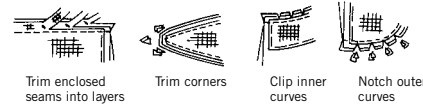
To Quick Mark:

- Snip edge of fabric to mark notches, ends of fold lines and center lines.
- Pin mark dots.



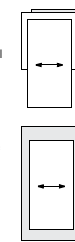
Sewing

- SEW garment following Sewing Directions.
- PIN or machine-baste seams matching notches.
- STITCH 5/8" (1.5 cm) seams unless otherwise stated.
- PRESS seams open unless otherwise indicated clipping when necessary so seams will lie flat.
- TRIM seams to reduce bulk, as shown below.



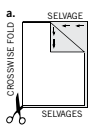
SPECIAL CUTTING NOTES

★ If layout shows a piece extending past fold, cut out all pieces except piece that extends.

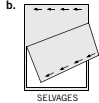


Open out fabric to single thickness. Cut extending piece on RIGHT side of fabric in position shown.

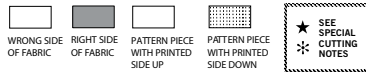
✳ Mark small arrows along both selvages indicating direction of nap or design. Fold fabric crosswise with RIGHT sides together, and cut along fold (a).



Turn one fabric layer around so arrows on both layers go in the same direction. Place RIGHT sides together (b).



Cutting Layouts

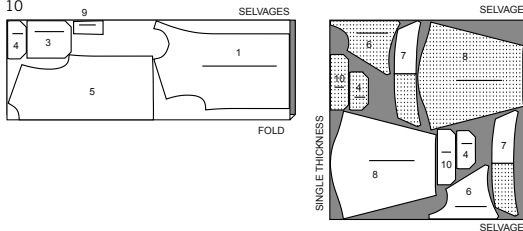


POSITION OF PATTERN PIECES MAY VARY SLIGHTLY ACCORDING TO YOUR PATTERN SIZE

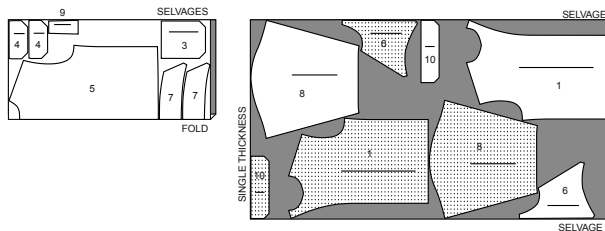
SHACKET A

USE PIECES 1 3 4 5 6 7 8 9 10

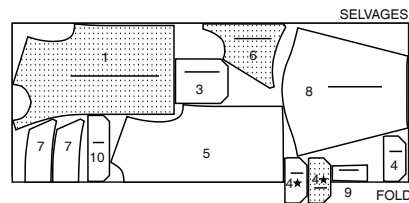
45" (115CM) WITH NAP
SIZES XS S M



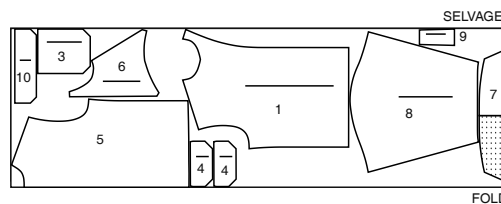
45" (115CM) WITH NAP
SIZES L XL



60" (150CM) WITH NAP
SIZES XS S M



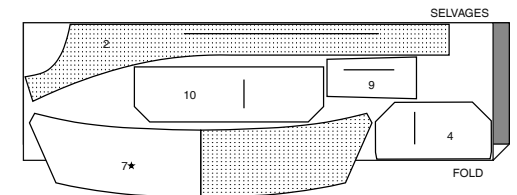
60" (150CM) WITH NAP
SIZES L XL



INTERFACING A,B

USE PIECES 2 4 7 9 10

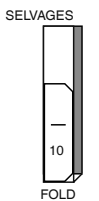
20" (51CM) ALL SIZES



LINING A, B

USE PIECE 10

45" (115CM) WITH NAP
ALL SIZES



CUTTING LAYOUTS CONTINUED ON PAGE 2

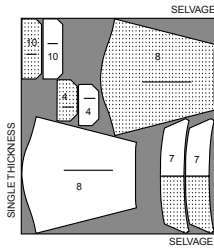
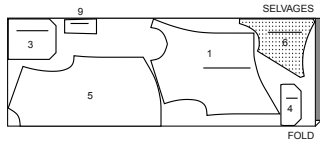
S3019

2 of 4

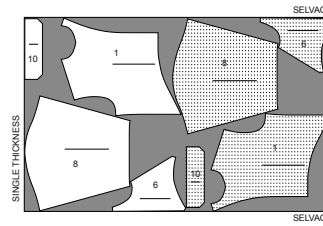
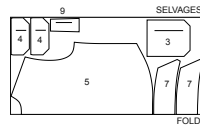
SHACKET B

USE PIECES 1 3 4 5 6 7 8 9 10

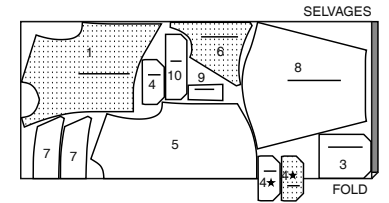
45" (115CM)
WITH NAP
SIZES XS S M



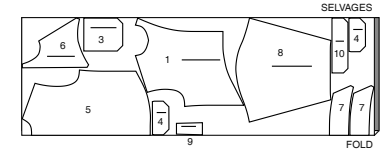
45" (115CM)
WITH NAP
SIZES L XL



60" (150CM)
WITH NAP
SIZES XS S M



60" (150CM)
WITH NAP
SIZES L XL



SEWING TUTORIALS



Build your skills viewing short, easy-to-follow videos at simplicity.com/sewingtutorials

Sewing Directions

FABRIC KEY RIGHT SIDE WRONG SIDE INTERFACING LINING LINING

Read **General Directions** on page 1 before you begin.

Sewing methods in **BOLD TYPE** have Sewing Tutorial Video available. Scan **QR CODE** to watch videos:

EDGESTITCH - See **how to edgestitch** video.

FINISH - See **how to finish seam allowances** video.

NARROW HEM - See **sewing narrow hems** video.

SLIPSTITCH - See **how to slip stitch** video.

STAYSTITCH - See **how to do stay-stitching** video.

TOPSTITCH - See **how to topstitch** video.

UNDERSTITCH - See **how to understitch** video.

SHACKET A, B

NOTE: View A will be illustrated, unless otherwise indicated.

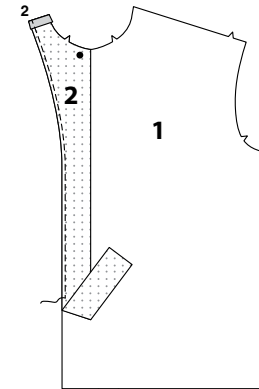
INTERFACING

1. Pin **INTERFACING** to wrong side of each matching **FABRIC** section. Fuse, following manufacturer's instructions.

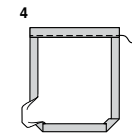
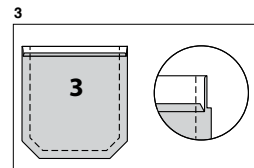
FRONT AND BACK

2. Pin **FRONT INTERFACING** (2) to **WRONG** side of self facing edge of **FRONT** (1), matching large dots and notches. Fuse, following manufacturer's instructions.

FINISH outer edge of self facing. Press under seam allowance on shoulder edge.

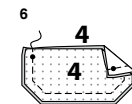
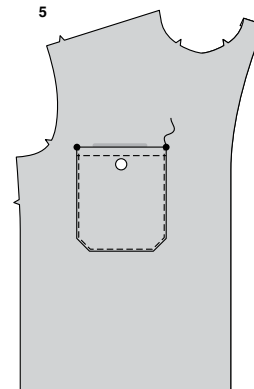


3. Press under 1/4" (6mm) on upper edge of **POCKET** (3). Turn upper edge to **OUTSIDE** along fold line, forming facing. Stitch along seam line on raw edges. Trim seam allowance in the facing area to 1/4" (6mm).

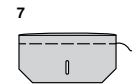


4. Turn corners **RIGHT** side out, turning facing to the **WRONG** side; press, pressing under raw edges along stitching, diagonally folding corners. Stitch facing close to inner edge.

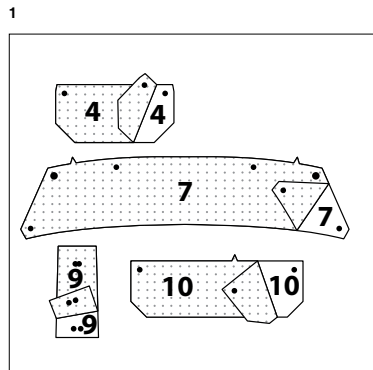
5. On **OUTSIDE**, pin pocket to front, matching large dots. **EDGESTITCH** side and lower edges. Sew button to pocket at small dot.

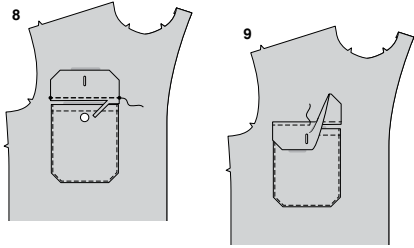


6. For each side, with **RIGHT** sides together. Stitch one interfaced **FLAP** (4) to one uninterfaced flap, leaving upper edge open, as shown. Trim seam. Clip corners.



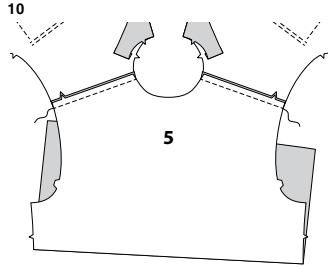
7. Turn **RIGHT** side out. Press. Baste raw edges together. Make buttonhole in flap at marking.



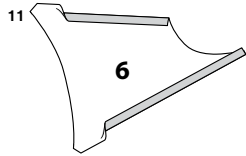


8. On **OUTSIDE**, pin flap to front, matching small dots, placing seamline along flap line. Stitch. Trim flap seam allowance to a scant 1/4" (6mm), being careful not to cut front.

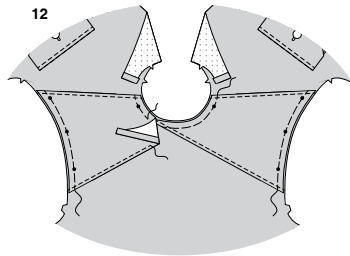
9. Turn flap down. Press. **TOPSTITCH** upper edge of flap.



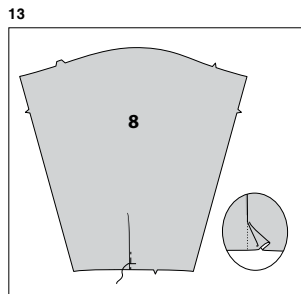
10. Stitch front to **BACK (5)** at shoulder edges.



11. Press under seam allowances on upper and lower edges of **YOKE FRONT AND BACK (6)**.



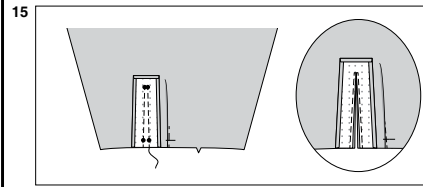
12. With **RIGHT** sides up, pin **RIGHT** yoke front and back to front and back, placing pressed edges along placement lines and inner small dots at shoulder seam, matching remaining small dots. Baste raw edges. **TOPSTITCH** pressed edges.
With **RIGHT** sides up, lap **LEFT** yoke front and back over **RIGHT** yoke front and back at center back, placing pressed edges along placement lines and inner small dots at shoulder seam, as shown, matching remaining small dots. Baste raw edges. **TOPSTITCH** pressed edges.



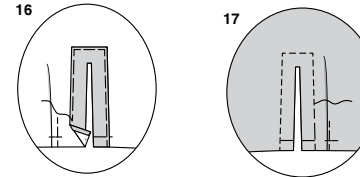
SLEEVE AND FACING

13. To make pleat in **SLEEVE (8)**, on **OUTSIDE**, crease sleeve along solid line. Bring crease to broken line. Pin. Baste pleat. Baste across lower edge. Press.

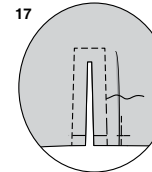
14. Press under 1/4" (6mm) seam allowance on upper and side edges of **SLEEVE FACING (9)**.



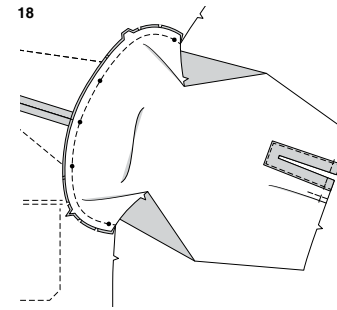
15. With **RIGHT** sides together, pin sleeve facing to sleeve, matching small dots and stitching lines. Stitch along stitching lines. Slash between stitching, being careful not to slash through the stitching at upper edge. Trim close to stitching.



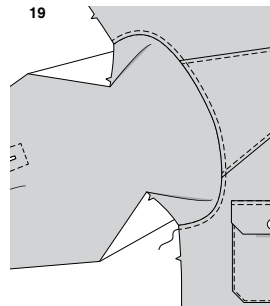
16. Turn facing to **INSIDE**. Press. Baste facing in place along pressed edges. Baste across lower edges.



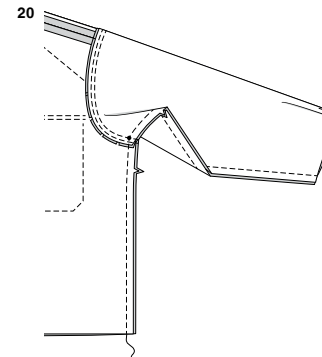
17. **TOPSTITCH** along inner basting.



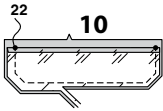
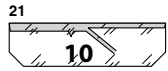
18. With **RIGHT** sides together, pin sleeve to shirt at armhole edge, placing center small dot at shoulder seam, matching remaining small dots. Stitch. Press seam toward shacket.



19. **TOPSTITCH** armhole seam.



20. Pin sleeve edges together; pin side edges together. Stitch in one continuous seam.



21. Press under seam allowance on upper edge of cuff LINING (10). Trim pressed seam allowance to 3/8" (1cm).

22. With RIGHT sides together, pin cuff lining to CUFF (10), matching small dots. Stitch, leaving notched edge open. Trim seam and corners.

23. Turn cuff RIGHT side out; press.

24. With RIGHT sides together, pin cuff to sleeve, placing opening edges at small dots. Stitch. Trim seam; press cuff out, pressing the seam towards cuff.

25. SLIPSTITCH pressed edge over seam.

26. TOPSTITCH upper edge of cuff.

Make buttonhole on cuff at marking. Sew button to cuff at small dot.

FOR VIEW A

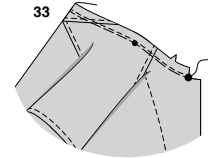
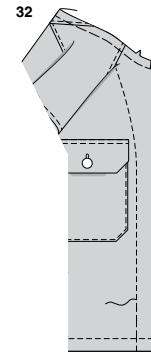
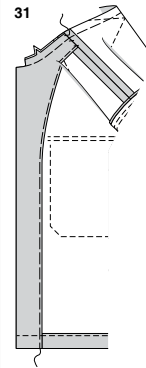
27. With RIGHT sides together, fold fronts along foldlines. Stitch upper edges from folds to large dots, as shown. Clip to large dots. Trim seams. Stitch along hem allowance across self facings. Trim facings close to stitching. Trim garment to within 5/8" (1.5cm) of inner edge of facing.

28. Turn facings to INSIDE; press, pressing up hem. Turn 1/4" (6mm) on raw edge of hem to wrong side; press. Stitch close to inner edge of hem, continuing stitching across facings.

FOR VIEW B

29. With RIGHT sides together, fold fronts along foldlines. Stitch upper edges from folds to large dots, as shown. Clip to large dots. Trim seams. Stitch along hem allowance across self facings. Trim facings close to stitching. Trim garment to within 5/8" (1.5cm) of inner edge of facing.

30. Turn facings to INSIDE; press. Make **NARROW HEM** at lower edge, continuing stitching across facings.



FOR VIEWS A, B

31. Tack shoulder edges of facings to shoulder seam allowances. Baste neck edge and along inner edge of facing.

32. Stitch fronts along stitching lines. Remove inner bastings.

COLLAR AND FINISHING

33. Machine stitch neck edge.

34. For facing, press under seam allowance on notched edge of uninterfaced COLLAR (7) section, easing in fullness if necessary. Trim pressed seam allowance to 3/8" (1cm).

35. With RIGHT sides together, stitch collar FACING to collar, leaving notched edge open. Trim seam and corners.

36. Turn collar RIGHT side out; press.

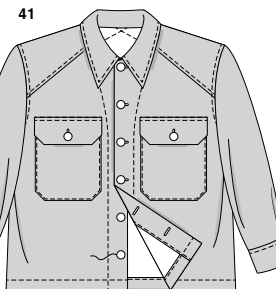
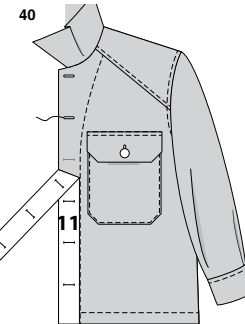
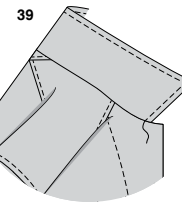
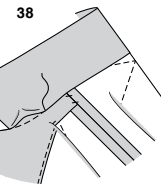
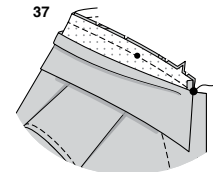
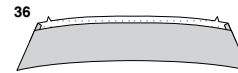
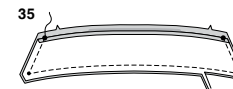
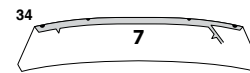
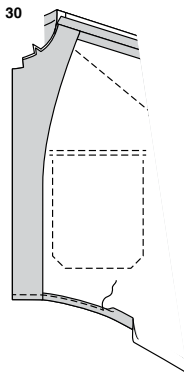
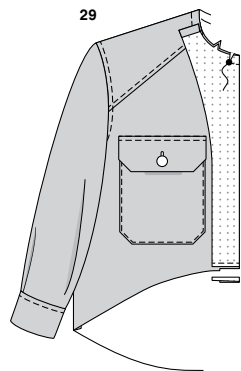
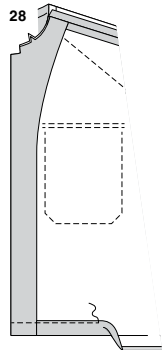
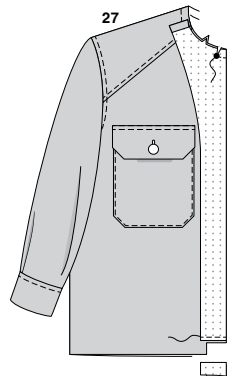
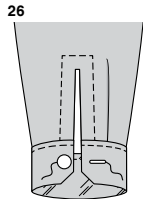
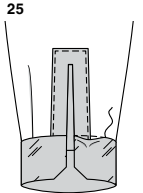
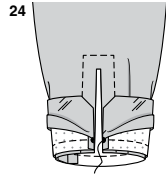
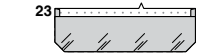
37. On OUTSIDE, pin collar to neck edge, matching centers, placing small dots at shoulder seams, clipping neck edge to stitching where necessary. Baste. Stitch. Trim seam. Press seam toward collar, pressing collar out.

38. SLIPSTITCH pressed edge over seam.

39. TOPSTITCH collar, as shown.

40. Pin GUIDE FOR BUTTONHOLES (11) to LEFT front of shirt with top even with the neck seam, matching centers. Transfer buttonhole markings to shirt. Make buttonholes at markings.

41. Lap LEFT front over RIGHT matching centers. Sew buttons under buttonholes.





Congrats!

You've completed your sewing adventure

**SHARE
YOUR** LOOK



Post your pattern and tag us
[@simplicity_creative_group](#) and [#simplicitypatterns](#)
for a chance to be featured on our social media.

Look for more PDF patterns at [simplicity.com](https://www.simplicity.com)

Have a question or need help with your sewing project call us at
1-888-588-2700



Simplicity ©2024 a division of IG Design Group Americas Inc. • Atlanta, GA 30342 USA www.thedesigngroup.com • All Rights Reserved. www.simplicity.com • Made in the U.S.A. Fabriqué aux États-Unis.

To be used for individual private home use only and not for commercial or manufacturing purposes. • A usage privé seulement et non à des fins commerciales ou de production en série. • Para uso privado solamente, no se puede utilizar con propósitos de comercialización o de producción en serie.