

S3018

Simplicity®

1970s Vintage



easy-to-sew

Designed and printed in USA.

Easy

## MISSES' PANTS, SKIRT AND JACKET

**Suggested Fabrics:** Chambray, Challis, Chino, Cotton Knit, Double Knit, Gabardine, Lightweight Wool, Linen, Poplin, Silk Linen, Surah, Tweed, Wool Crepe, Wool Flannel. **Interfacing:** Lightweight Woven or Non-Woven, Fusible or Non-fusible.

**Notions:** **Pants and Skirt:** One 7" (18cm) zipper, seam binding or stretch lace. **Jacket:** Bias seam binding or stretch lace, two ¾" (2.2cm) buttons for front or one chain and button closure for front with 1½" (3cm) buttons, two or four ¾" (2.2cm) buttons for sleeves (opt.)

Sizes	6	8	10	12	14	16	18	20	22	24
European	32	34	36	38	40	42	44	46	48	50

## BODY MEASUREMENTS: Select pattern size based on body measurements

Bust	30½	31½	32½	34	36	38	40	42	44	46	Ins.
Waist	23	24	25	26½	28	30	32	34	37	39	"
Hip-9" below waist	32½	33½	34½	36	38	40	42	44	46	48	"
Back-neck to waist	15½	15¾	16	16¼	16½	16¾	17	17¼	17½	17¾	"

Pants	45**	2%	2%	2%	2%	2%	2%	2%	2%	2%	Yds.
60**	1%	1%	1%	2%	2%	2%	2%	2%	2%	2%	"
Skirt	45**	2%	2%	2%	2%	2%	2%	2%	2%	2%	Yds.
60**	1%	1%	1%	1%	1%	1%	1%	1%	1%	1%	"

## Interfacing (All Jackets)

20" - 1 yd.

## Jacket with Long Sleeves - Even crosswise stripe or plain fabric

45**	1%	1%	1%	1%	1%	2%	2%	2%	2%	2%	Yds.
------	----	----	----	----	----	----	----	----	----	----	------

## Jacket with Long Sleeves - Even or uneven crosswise stripe or plain fabric

60**	1%	1%	1%	1%	1%	1%	1%	1%	1%	1%	Yds.
------	----	----	----	----	----	----	----	----	----	----	------

## Jacket with Short Sleeves

45**	1%	1%	1%	1%	1%	1%	1%	1%	1%	1%	Yds.
60**	1%	1%	1%	1%	1%	1%	1%	1%	1%	1%	"

**NOTE:** Please refer to the sewing instructions for **FINISHED GARMENT MEASUREMENTS.**

\*with nap \*\*without nap

Facile

## PANTALON, JUPE ET VESTE POUR JEUNES FEMMES

**Tissus Conseillés:** Chambray, Challis, Chino, Tricot de coton, Tricot double, Gabardine, Laine légère, Toile de lin, Popeline, Toile de lin de soie, Tissu surah, Tweed, Crêpe de laine, Flanelle de laine. **Entoilage:** Tissé léger ou non-tissé, thermocollant ou non-thermocollant.

**Mercerie:** **Pantalon et jupe:** 1 fermeture à glissière de 18cm, bordure de couture ou dentelle extensible. **Veste:** Bordure de couture biais ou dentelle extensible, deux boutons de 2.2cm pour le devant ou une chaîne et une fermeture à bouton pour le devant avec boutons de 3cm, deux ou quatre boutons de 2.2cm pour les manches (facultatif).

Tailles	6	8	10	12	14	16	18	20	22	24
Françaises	34	36	38	40	42	44	46	48	50	52
Européen	32	34	36	38	40	42	44	46	48	50

## MESURES DU CORPS: Choisissez la taille du patron basée sur les mesures du corps

Poitrine	78	80	83	87	92	97	102	107	112	117	cm
----------	----	----	----	----	----	----	-----	-----	-----	-----	----

Taille	58	61	64	67	71	76	81	87	94	99	"
--------	----	----	----	----	----	----	----	----	----	----	---

## Hanches (23cm au-dessous de la taille)

	83	85	88	92	97	102	107	112	117	122	cm
--	----	----	----	----	----	-----	-----	-----	-----	-----	----

## Dos du cou à la taille

	39.5	40	40.5	41.5	42	42.5	43	44	44	44.5	"
--	------	----	------	------	----	------	----	----	----	------	---

## Pantalon

115cm*	2.4	2.4	2.4	2.4	2.4	2.4	2.4	2.4	2.4	2.5	m
--------	-----	-----	-----	-----	-----	-----	-----	-----	-----	-----	---

150cm*	1.3	1.4	1.9	2.1	2.1	2.2	2.2	2.3	2.4	2.4	"
--------	-----	-----	-----	-----	-----	-----	-----	-----	-----	-----	---

## Jupe

115cm*	2.1	2.1	2.1	2.1	2.1	2.1	2.1	2.1	2.1	2.1	m
--------	-----	-----	-----	-----	-----	-----	-----	-----	-----	-----	---

150cm*	1.5	1.5	1.5	1.5	1.5	1.5	1.5	1.5	1.5	1.6	"
--------	-----	-----	-----	-----	-----	-----	-----	-----	-----	-----	---

## Entoilage (toutes les vestes)

51cm - 0.9m

## Veste à manches longues - Tissu uni ou à rayures transversales uniformes

115cm*	1.6	1.6	1.6	1.7	1.7	1.9	1.9	2.1	2.1	2.1	m
--------	-----	-----	-----	-----	-----	-----	-----	-----	-----	-----	---

## Veste à manches longues - Tissu uni ou à rayures transversales uniformes ou inégales

150cm*	1.4	1.4	1.4	1.4	1.4	1.4	1.4	1.4	1.5	1.5	m
--------	-----	-----	-----	-----	-----	-----	-----	-----	-----	-----	---

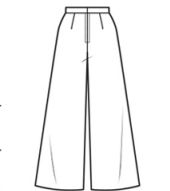
## Veste à manches courtes

115cm*	1.4	1.4	1.5	1.5	1.5	1.6	1.6	1.6	1.6	1.7	m
--------	-----	-----	-----	-----	-----	-----	-----	-----	-----	-----	---

150cm*	0.9	1.0	1.0	1.0	1.0	1.1	1.1	1.1	1.3	1.3	"
--------	-----	-----	-----	-----	-----	-----	-----	-----	-----	-----	---

**NOTE:** S'il vous plaît, reportez-vous aux instructions de couture pour les **MESURES DU VÊTEMENT FINI.**

\*avec sens \*\*sans sens





## 7138 sewing directions

Shaded area is right side of fabric

The metric equivalent is in parenthesis.

**NOTE:** Stitch 5/8" (1.5cm) seams, unless otherwise stated, matching same numbered notches.

**FOLLOW THESE FEW SIMPLE RULES FOR KNIT FABRICS:**

Use loose but balanced tension and 10 to 12 stitches per inch (2.5cm).

Use nylon or polyester thread and a fine needle.

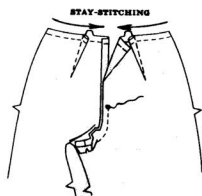
For zig-zag machine, stitch seams with a narrow zig-zag stitch.

To prevent shoulder seams from stretching, baste center of straight seam binding along seam line on front shoulder edges before stitching shoulder seams. Finish facings and hems by stitching 1/4" (6mm) from inner edges and pinking them.

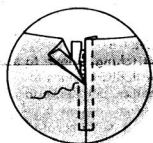
## wide leg pants

UNIT 1  
back

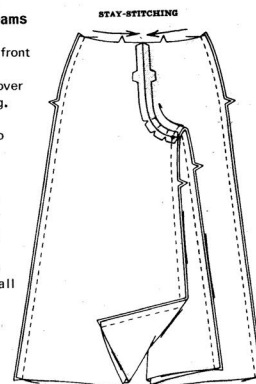
Make darts; press toward center. Stitch center back seam as far as medium dot. Stitch again over first stitching. Clip curves.

UNIT 2  
zipper

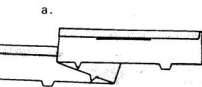
Press under 5/8" (1.5cm) on center back opening edges. Pin closed zipper under opening edges, placing tab end of zipper 1/2" (1.3cm) below waistline seam line, having opening edges meet at center of zipper. Baste. Stitch, using a zipper foot.

UNIT 3  
front and seams

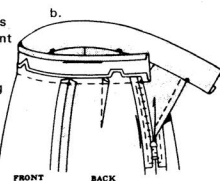
Stitch center front seam. Stitch again over first stitching. Clip curves. Stitch front to back at side seams. Pin front to back at inner leg seam. Stretch pants back to fit front between notch and small dot. Stitch.

UNIT 4  
waistband

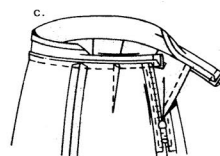
a—Press under 5/8" (1.5cm) on notched edge of waistband; trim to 1/4" (6mm).



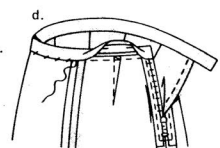
b—With RIGHT sides together, pin garment to band, matching centers and small dots. Baste, easing garment to fit. Stitch. Trim seam; press toward band.



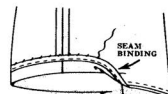
c—Fold band, with RIGHT sides together. Stitch ends. Trim seams and corners.



d—Turn band; press. Slip-stitch pressed edge of band over seam.

UNIT 5  
leg hems

Press up leg hem. Finish hem with seam binding or stretch lace; slip-stitch, easing in fullness.

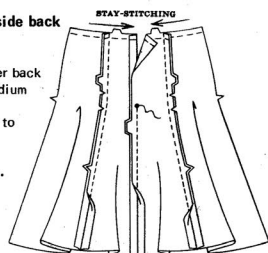


If you prefer to crease pants, fold leg edges together, matching side and inner leg seams; press.

## skirt

UNIT 1  
back and side back

Stitch center back seam to medium dot. Stitch back to side back sections. Clip curves.

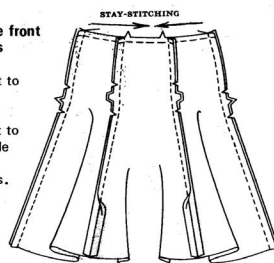


For zipper, make same as for pants, see unit 2.

© Copyright 1975 by Simplicity Pattern Co., Inc.

UNIT 3  
front, side front and seams

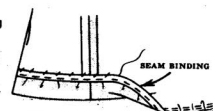
Stitch front to side front sections. Stitch front to back at side seams. Clip curves.



For waistband, make same as for pants, see unit 4.

UNIT 5  
hem

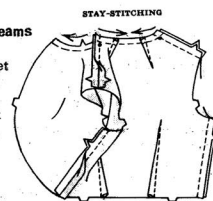
Mark length. Press up hem along marking. Mark depth of hem; trim evenly. To ease in fullness, stitch 1/4" (6mm) from raw edge, using a long machine-stitch. Pull up machine-stitching so hem will lie flat. Press, shrinking out fullness. Finish hem with seam binding or stretch lace; slip-stitch.



## jacket with long sleeves

UNIT 1  
front, back and seams

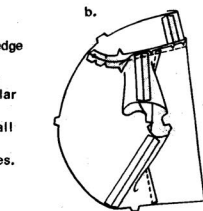
Make darts in jacket back; press toward center. Stitch front to back at shoulder seams, easing back to fit between small dot and notch. Stitch side seams.

UNIT 2  
under collar

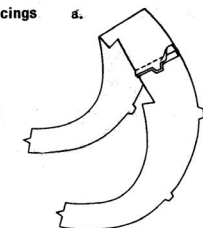
a—Stitch center back seam of under collar.



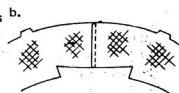
b—Clip jacket neck edge to stay-stitching. With RIGHT sides together, pin under collar to jacket, matching centers back and small dots. Stitch. Trim seam; clip curves. Press seam open.

UNIT 3  
upper collar and facings

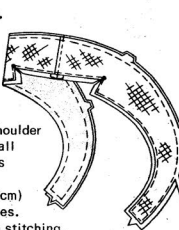
a—Stitch center back seam of upper collar and front facing.



b—Lap center back edges of upper collar and front interfacing, matching seam lines. Stitch along seam line. Trim close to stitching.



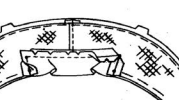
c—Pin interfacing to WRONG side of upper collar and front facing, having raw edges even. Machine-stitch along seam line at neck and shoulder edges, stitching thru small dots at inner corners, as shown. Machine-baste 1/2" (1.3cm) from remaining outer edges. Trim interfacing close to stitching. Clip to small dots at inner corners.



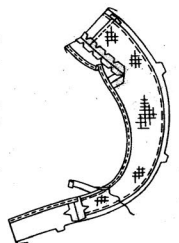
d—Clip curved edge of neck facing to stay-stitching.



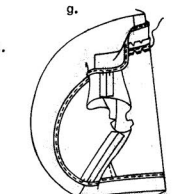
e—With RIGHT sides together, pin neck facing to upper collar and front facing matching centers back and small dots. Stitch along seam line stitching thru small dots at inner corners. Trim seam; clip curves. Press seam open. Stitch lower back facing to upper collar and front facing at side seams. Encase unnotched edge of facings in seam binding or stretch lace.



f—With RIGHT sides together, pin upper collar and facings to jacket and under collar, matching centers back and seams. Baste, easing upper collar and front facing to fit. Stitch. Trim seam; clip curves.



g—Turn upper collar and facings to INSIDE; press.



Tack back neck seams together loosely.

Tack facing to seams.

Printed in U.S.A.

UNIT 4  
long sleeves

a—To gather top of sleeve between notches, stitch along seam line and 1/4" (6mm) INSIDE seam line, using a long machine-stitch.

Make elbow dart; press down.

Encase lower edge of sleeve in seam binding or stretch lace.

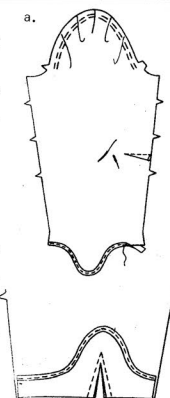
b—Turn lower edge of sleeve to OUTSIDE along along fold line, forming facing.

Stitch along stitching lines, as shown.

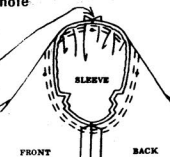
To reinforce point, stitch over first stitching. Slash between stitching.

Open out facing.

Stitch entire underarm seam. Turn facing to INSIDE; press, slip-stitch.

UNIT 5  
stitching sleeve to armhole

With RIGHT sides together, pin sleeve to armhole edge with center small dot at shoulder seam, matching underarm seams and remaining small dots. Pull up machine-stitching to fit. Baste, easing in fullness. Stitch. Stitch again 1/8" (3mm) from first stitching. Trim seam below notches close to stitching. Press seam toward sleeve.

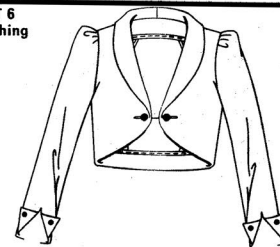
UNIT 6  
finishing

Make worked or machine buttonholes in both fronts and fasten with a chain and button closure, as shown, or jacket can be trimmed with two buttons at buttonhole markings, as shown on front of envelope.

If you prefer, turn slashed edges of each sleeve back and hold with two buttons at small dots or turn just one edge back and hold with one button, as shown on front of envelope.

## jacket with short sleeves

Make same as for jacket with long sleeves, omitting reference to elbow darts.



# Simplicity®

Thank you for purchasing this Simplicity pattern.  
We made every effort to provide you with a high quality product.

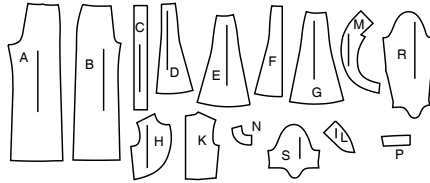
## SUPPLEMENTAL CUTTING LAYOUTS

Sizes	6	8	10	12	14	16	18	20	22	24
European	32	34	36	38	40	42	44	46	48	50

### FINISHED GARMENT MEASUREMENTS (Includes Design and Wearing Ease)

Waist (Pants, Skirt)	24	25	26	27 1/2	29 1/2	31 1/2	33 1/2	35 1/2	37 1/2	39 1/2
Hip (Pants)	36	37	38	39 1/2	41 1/2	43 1/2	45 1/2	47 1/2	49 1/2	51 1/2
Hip (Skirt)	39	40	41	42 1/2	44 1/2	46 1/2	48 1/2	50 1/2	52 1/2	54 1/2
Width, lower edge										
Skirt	81 1/2	82 1/2	83 1/2	85	87	89	91	93	95	97
Width, each leg										
Pants	24	24 1/2	25	25 1/2	26 1/2	27 1/2	28 1/2	29 1/2	30 1/2	31 1/2
Finished back length from base of neck										
Jacket	15 1/2	16	16 1/2	16 1/2	16 1/2	17	17 1/2	17 1/2	17 1/2	18
Finished back length from waist										
Skirt	23	23	23	23	23	23	23	23	23	23
Finished side length from waist										
Pants	41 1/2	41 1/2	41 1/2	42	42 1/2	42 1/2	42 1/2	43	43 1/2	43 1/2

15 PIECES



A Pants Back  
B Pants Front  
C Waistband  
D Skirt Back  
E Skirt Side Back  
F Side Front  
G Skirt Side Front  
H Jacket Front  
K Jacket Back  
L Under Collar  
M Upper Collar and Front Facing  
N Neck Facing  
P Lower Back Facing  
R Long Sleeve  
S Short Sleeve



www.simplicity.com



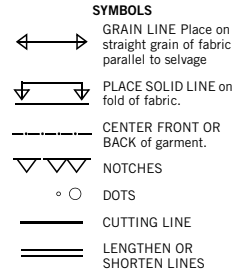
info@simplicity.com



1-888-588-2700

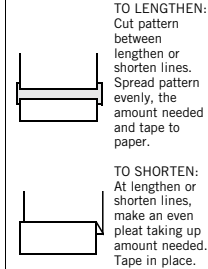
## General Directions

### The Pattern



SEAM ALLOWANCE: 5/8" (1.5cm) unless otherwise stated is included but not printed on MULTI-SIZE PATTERNS. Mark your size with colored felt tip pen. See chart on tissue for how to use MULTI-SIZE PATTERNS.

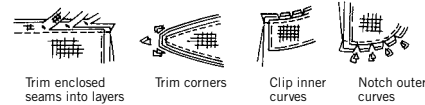
### ADJUST IF NEEDED



When lengthen or shorten lines are not given, make adjustments at lower edge of pattern.

### Sewing

- SEW garment following **Sewing Directions**.
- PIN or machine-baste seams matching notches.
- STITCH 5/8" (1.5 cm) seams unless otherwise stated.
- PRESS seams open unless otherwise indicated clipping when necessary so seams will lie flat.
- TRIM seams to reduce bulk, as shown below.



### Cutting/Marking

**BEFORE CUTTING:**

PRESS pattern pieces with a warm dry iron. PRE-SHRINK fabric by pre-washing washables or steam-pressing non-washables.

CIRCLE your cutting layout.

PIN pattern to fabric as shown in Cutting Layouts.

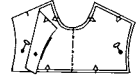
- FOR DOUBLE THICKNESS: Fold fabric with RIGHT sides together.
- FOR SINGLE THICKNESS: Place fabric RIGHT side up.
- FOR PILE, SHADED OR ONE WAY DESIGN FABRICS: Use "with nap" layouts

**AFTER CUTTING:**

Transfer markings to WRONG side of fabric before removing pattern. Use pin and chalk method or dressmaker's tracing paper and wheel.

### To Quick Mark:

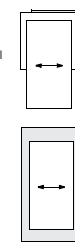
- Snip edge of fabric to mark notches, ends of fold lines and center lines.
- Pin mark dots.



### SPECIAL CUTTING NOTES

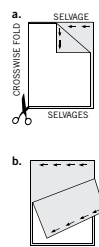
- If layout shows a piece extending past fold, cut out all pieces except piece that extends.

Open out fabric to single thickness. Cut extending piece on RIGHT side of fabric in position shown.

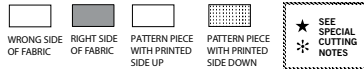


- Mark small arrows along both selvages indicating direction of nap or design. Fold fabric crosswise with RIGHT sides together, and cut along fold (a).

Turn one fabric layer around so arrows on both layers go in the same direction. Place RIGHT sides together (b).



## Cutting Layouts

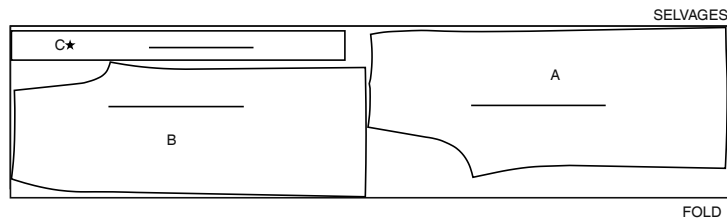


POSITION OF PATTERN PIECES MAY VARY SLIGHTLY ACCORDING TO YOUR PATTERN SIZE

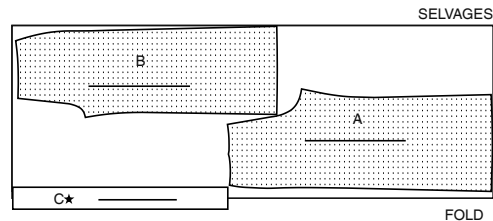
### PANTS

USE PIECES A B C

45" (115CM)  
WITH NAP  
ALL SIZES



60" (150CM)  
WITH NAP  
SIZES 6 8 10 12 14 16 18

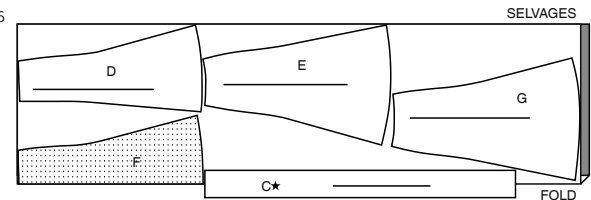
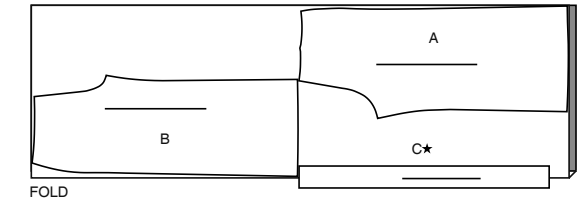


60" (150CM)  
WITH NAP  
SIZES 20 22 24

### SKIRT

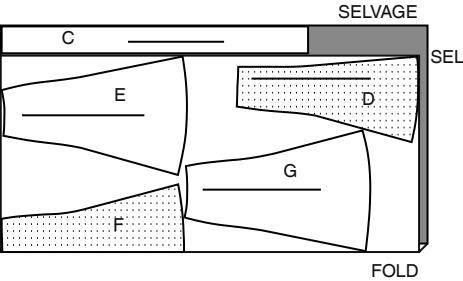
USE PIECES C D E F G

45" (115CM)  
WITH NAP  
SIZES 20 22 24

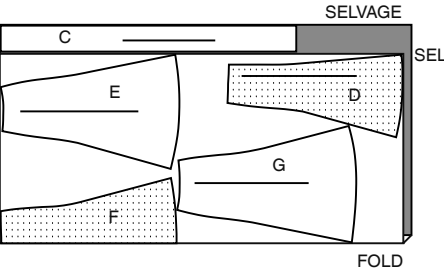


CUTTING LAYOUTS CONTINUED ON PAGE 2

45" (115CM)  
WITH NAP  
SIZES 18 20 22 24



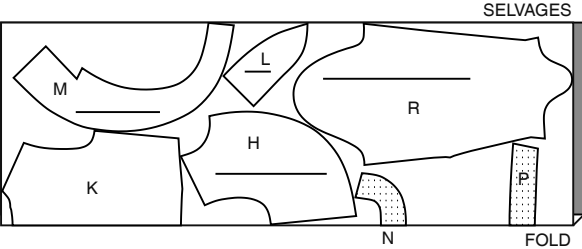
60" (150CM)  
WITH NAP  
ALL SIZES



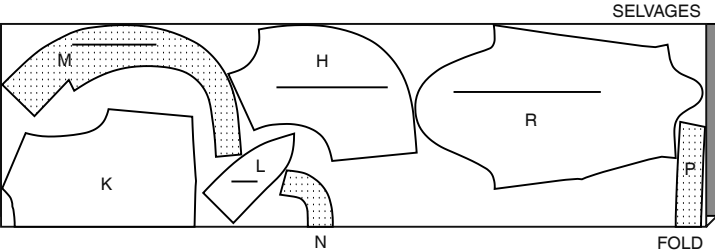
**JACKET WITH LONG SLEEVES**

USE PIECES H K L M N P R

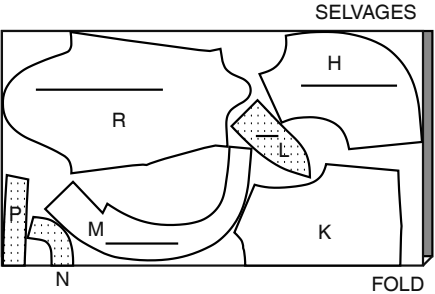
45" (115CM)  
WITH NAP  
SIZES 6 8 10 12 14



45" (115CM)  
WITH NAP  
SIZES 16 18 20 22 24



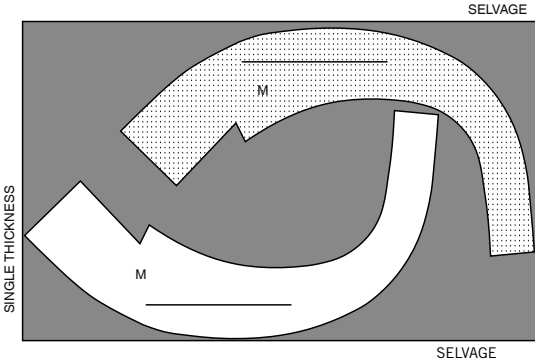
60" (150CM)  
WITH NAP  
ALL SIZES



**JACKET INTERFACING**

USE PIECE M

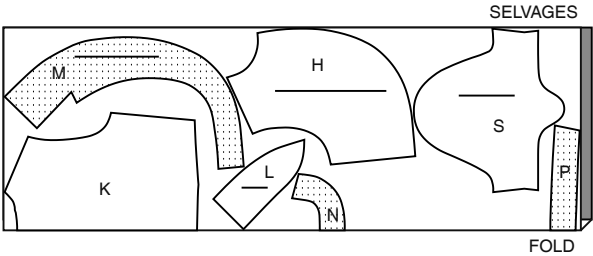
20" (51CM)  
ALL SIZES



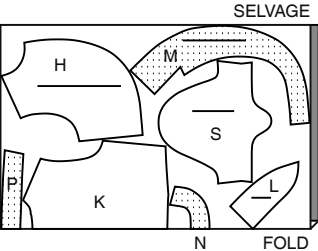
**JACKET WITH SHORT SLEEVES**

USE PIECES H K L M N P S

45" (115CM)  
WITH NAP  
ALL SIZES



60" (150CM)  
WITH NAP  
ALL SIZES





# Congrats!

You've completed your sewing adventure

---

## SHARE YOUR LOOK



Post your pattern and tag us  
[@simplicity\\_creative\\_group](#) and [#simplicitypatterns](#)  
for a chance to be featured on our social media.

Look for more PDF patterns at [simplicity.com](https://www.simplicity.com)

Have a question or need help with your sewing project call us at  
1-888-588-2700



Simplicity ©2024 a division of IG Design Group Americas Inc. • Atlanta, GA 30342 USA [www.thedesigngroup.com](https://www.thedesigngroup.com) • All Rights Reserved. [www.simplicity.com](https://www.simplicity.com) • Made in the U.S.A. Fabriqué aux États-Unis.

To be used for individual private home use only and not for commercial or manufacturing purposes. • A usage privé seulement et non à des fins commerciales ou de production en série. • Para uso privado solamente, no se puede utilizar con propósitos de comercialización o de producción en serie.