

S3016

Simplicity

1950s Vintage

SIMPLE TO MAKE



Easy

Facile

MISSES' SKIRTS

Suggested Fabrics: View 1: Even Plaid or Plain Fabric - Cotton, Rayon, Taffeta, Wool. View 2: Cotton, Denim, Fake Fur, Rayon, Wool. View 3: Corduroy, Cotton, Faille, Wool. **Lining:** Lining Fabric (opt.). **Interfacing (View 1):** Hair Canvas.

Notions: Views 1,2,3: One 9" (23cm) zipper, hooks and eyes, bias seam binding (opt.). Also for View 1: Straight seam binding.

Sizes	8	10	12	14	16	18	20	22	24	26
European	34	36	38	40	42	44	46	48	50	52

BODY MEASUREMENTS: Select pattern size based on body measurements

Bust	31½	32½	34	36	38	40	42	44	46	48	Ins.
Waist	24	25	26½	28	30	32	34	37	39	41½	"
Hip-9" below waist	33½	34½	36	38	40	42	44	46	48	50	"
Back-neck to waist	15½	16	16½	16½	16½	17	17¼	17½	17½	17¾	"

View 1 Skirt (with four fabric pockets)

45**	2%	2%	2%	2%	2%	2%	3	3%	3¼	3¼	Yds.
60**	2	2½	2½	2½	2½	2½	2½	2½	2½	2½	"

View 1 Skirt (with two fabric pockets)

45**	2½	2½	2½	2½	2½	2½	3	3%	3¼	3¼	Yds.
60**	2	2	2	2	2½	2½	2½	2½	2½	2½	"

Interfacing 25" - ¾ yd.

View 1,2 Lining (optional) - 45*** - ½ yd.

View 2 Skirt (with four fabric pockets)

45**	2%	2%	3	3%	3%	3¼	3%	3½	3½	3½	Yds.
60**	2½	2½	2½	2½	2½	2½	2½	2½	2½	2½	"

View 2 Skirt (with two fabric pockets)

45**	2%	2%	3	3%	3%	3¼	3%	3½	3½	3½	Yds.
60**	2	2	2	2	2½	2½	2½	2½	2½	2½	"

View 3 Skirt

45**	2%	2%	3	3%	3%	3¼	3%	3½	3½	3½	Yds.
60**	2	2	2	2	2½	2½	2½	2½	2½	2½	"

NOTE: Please refer to the sewing instructions for FINISHED GARMENT MEASUREMENTS.

*with nap **without nap

JUPES POUR JEUNES FEMMES

Tissus Conseillés: **Modèle 1:** tissu à carreaux ou tissu uni uniformes - Coton, Rayonne, Taffetas, Laine. **Modèle 2:** Coton, Denim, Fourrures Synthétiques, Rayonne, Laine. **Modèle 3:** Velours côtelé, Coton, Faille, Laine. **Doublure:** Tissu à doublure (facultatif). **Entoilage (Modèle 1):** Toile tailleur.

Mercerie: **Modèle 1,2,3:** 1 fermeture à glissière de 23cm, agrafes, ruban de couture biais (facultatif). **Aussi pour Modèle 1:** Ruban de couture droite.

Tailles	8	10	12	14	16	18	20	22	24	26
Françaises	36	38	40	42	44	46	48	50	52	54
Européennes	34	36	38	40	42	44	46	48	50	52

MESURES DU CORPS: Choisissez la taille du patron basée sur les mesures du corps

Poitrine	80	83	87	92	97	102	107	112	117	122	cm
Taille	61	64	67	71	76	81	87	94	99	106	"

Hanches (23cm au-dessous de la taille)

	85	88	92	97	102	107	112	117	122	127	cm
Dos du cou à la taille	40	40.5	41.5	42	42.5	43	44	44	44.5	44.5	"

Modèle 1 Jupe (avec quatre poches en tissu)

115cm*	2.6	2.6	2.6	2.6	2.6	2.7	2.9	3.0	3.0	m
150cm*	1.8	1.8	1.9	2.1	2.1	2.2	2.3	2.3	2.4	"

Modèle 1 Jupe (avec deux poches en tissu)

115cm*	2.3	2.3	2.4	2.5	2.5	2.6	2.7	2.9	3.0	3.0	m
150cm*	1.8	1.8	1.8	1.8	1.9	1.9	1.9	1.9	2.1	2.2	"

Entoilage 64cm - 0.6m

Modèle 1,2 Doublure (facultatif) - 115cm** - 0.5m

Modèle 2 Jupe (avec quatre poches en tissu)

115cm*	2.6	2.6	2.7	2.7	2.9	3.0	3.1	3.1	3.2	3.3	m
150cm*	1.8	1.9	1.9	1.9	2.1	2.1	2.2	2.2	2.3	2.3	"

Modèle 2 Jupe (avec deux poches en tissu)

115cm*	2.6	2.6	2.7	2.9	2.9	3.0	3.1	3.1	3.2	3.3	m
150cm*	1.8	1.8	1.8	1.8	1.9	2.1	2.1	2.2	2.3	2.3	"

Modèle 3 Jupe

115cm*	2.6	2.6	2.7	2.7	2.9	3.0	3.1	3.2	3.2	3.3	m
150cm*	1.8	1.8	1.8	1.8	1.8	1.8	1.8	1.8	1.9	1.9	"

NOTE: S'il vous plaît, reportez-vous aux instructions de couture pour les MESURES DU VÊTEMENTS FINI.

*avec sens **sans sens



1



2



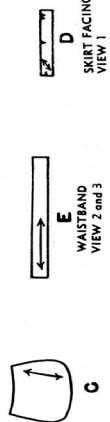
3

AUTHENTIC VINTAGE PATTERN REPRODUCTION

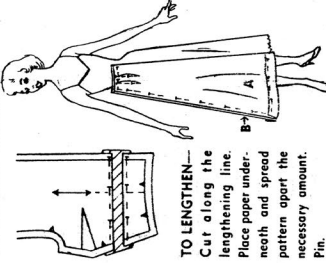
INCLUDES ADDITIONAL SIZE OPTIONS AND CUTTING LAYOUTS

Simplicity Primer
GUIDE FOR CUTTING AND SEWING... DETAILED DRESSMAKING

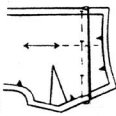
1. STUDY THE PIECES 5 PIECES GIVEN SEE CUTTING NOTES



2. ADJUST PATTERN



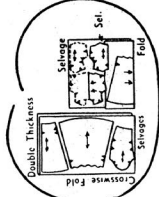
TO LENGTHEN—
Cut along the lengthening line. Place paper under, notch and spread pattern apart the necessary amount. Pin.



TO SHORTEN—
Create pattern at shortening line and pin a tuck in pattern to take up necessary amount.

4. LAYOUT PATTERN AND CUT SEAM ALLOWED — 5/8" UNLESS OTHERWISE STATED

Circle diagram for size, width and style. Place pattern on RIGHT side of fabric for single thickness and on WRONG side for double thickness. Reverse pattern for second piece when duplicate pieces are cut one at a time. When pattern pieces extend beyond fold of fabric, open fabric and cut pattern on RIGHT side of fabric. Broken lines indicate duplicate pieces or slaps or whole piece.
FOR STRAIGHT GRAIN: Place pattern on fabric with ends of arrow even from selvage; pin. Place fold lines exactly on fold of fabric; pin. Margins may overlap and are removed as pattern and fabric is cut along cutting line.

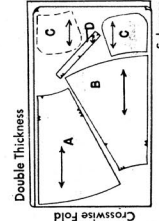


5. CUTTING

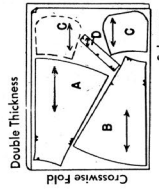
View 1

EVEN PLAID OR PLAIN FABRIC

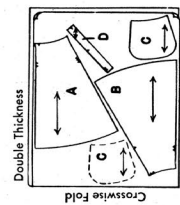
Sizes 24, 26, 28, 30
35" Fabric



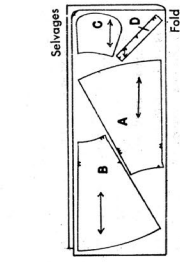
Sizes 24, 26, 28, 30
35" Fabric



All Sizes 44" Fabric



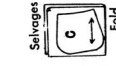
All Sizes 54" Fabric



Views 1, 2
LINING FOR POCKET
(WHEN NAP OR 54" FABRIC IS USED)



All Sizes
25" Hair Canvas



All Sizes
35 - 39" Fabric

6. MARK FABRIC

The Pattern line of your Simplicity pattern is perfect; as are all trimming lines, cutting lines and other important construction points. It is essential that all of these construction points be marked on fabric. Here are two ways to mark fabric.
Snap notches or mark notches. Run bastings at centers front and back. Do not remove center bastings until garment is finished.



TAILOR'S TACKS — Use long double thread and make tailor's tacks thru marking lines and o's allowing two inch loops. After all tacks are made, cut top loops before removing pattern. Separate two thicknesses of fabric and clip threads between layers. Do not remove pattern until ready to sew.



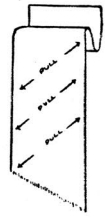
MARKING WITH TRACING WHEEL — Slip a sheet of tracing paper under both pieces of garment and another on top under pattern piece, right sides of paper toward fabric. Trace lines of pattern with tracing wheel, using a ruler on straight lines. Do not remove pattern until ready to sew.



MARKING WITH TRACING WHEEL — Slip a sheet of tracing paper under both pieces of garment and another on top under pattern piece, right sides of paper toward fabric. Trace lines of pattern with tracing wheel, using a ruler on straight lines. Do not remove pattern until ready to sew.

3. PREPARE FABRIC

STRAIGHTEN UNEVEN FABRIC
Clip one selvage and pull a thread across fabric. Cut along this thread to be sure the fabric is cut on a crosswise thread.



The crosswise threads should be squared with the selvage. If they are not, pull fabric carefully on the true bias in both directions.

PRESS FABRIC BEFORE CUTTING
Wool should be sponged or preshrunk before cutting. If fabric is wrinkled or creased from folding, press carefully with a damp cloth on the wrong side of the fabric.

CUTTING NOTES

When pattern piece extends beyond fold of fabric open fabric before cutting; place pattern on right side of fabric in position shown.

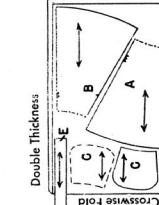
VIEW 1 AND 2

When 54" fabric is used, cut 2 by C of skirt fabric and 2 of lining fabric. For other fabrics, cut 4 by C.

SKIRT INTERFACING—Cut 2 by pattern D.

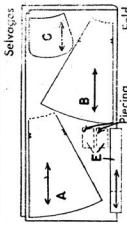
View 2

All Sizes 35-39" Fabric



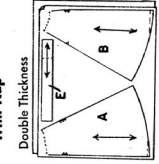
All Sizes 54" Fabric
With or Without Nap

NOTE: For sizes 32 and 34, piece E as shown allowing for seams.



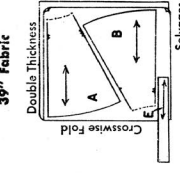
View 3

All Sizes 35" Fabric
With Nap

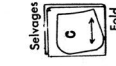


NOTE: Cut one E. For sizes 32 and 34, piece A and C following for seams. For sizes 26, 30, 32 and 34, piece E allowing for seams.

Sizes 24, 26, 28
39" Fabric



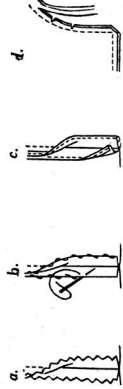
INTERFACING



3733 GENERAL INSTRUCTIONS

1. After garment is cut stitch stay lines (a row of stitching) 1/2" from short bias or curved edges, to keep them from stretching.
 2. Baste garment together following procedure below. Match notches and make 3/4" seams.
 3. **FIRST FITTING**—Try on garment, pinning shoulder pads in place if required. Make sure that shoulder seam is directly on top of the shoulder. (Unless style indicates otherwise.) Center front and back lines and side seams should hang perpendicular to floor.
 4. Make adjustments if necessary; stitch and finish construction except hem. Press each seam before it is joined to another.
- DIRECTION OF STITCHING SEAMS:** Stitch skirts from hem to waistline. Stitch shoulder seams from neck to armhole. Stitch bodice from armhole to waist.
- For enclosed seams, facings, collars, etc., unless otherwise instructed, trim seams to 1/4" from stitching. Clip curves at intervents and clip corners.
5. **FINAL FITTING**—Mark length and finish hem.

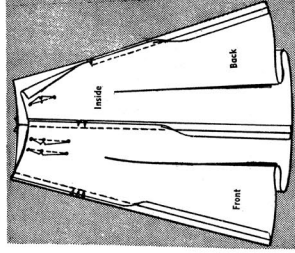
NOTE: Press all seams open unless otherwise instructed.



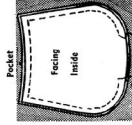
SEAM FINISHES

- a. Pink seams.
- b. Overcast separately.
- c. Turn in edges 1/8" and stitch separately.
- d. For enclosed seam, trim seam, clipping corners and curves.

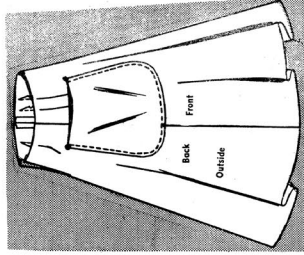
SKIRT VIEW 1



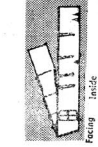
- 1.—To make darts in Skirt Front and Back, on **INSIDE**, bring lines of small *'s together. Baste thru *'s, tapering to nothing at single *'s. Clip darts at waistline and press toward center. Baste center front and center, back seams. Baste side seam. Allow Skirt to hang overnight. If seams draw, clip basting. Stitch seams starting at lower edge leaving center back seam open above notch.



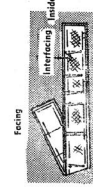
- 2.—a.—Face Pocket, leaving an opening to turn along lower edge. Trim seam; turn. Baste. Slip-stitch opening edges together.



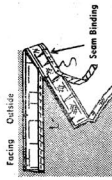
- b.—On **OUTSIDE**, baste Pocket to Skirt, matching small and medium *'s. Top-stitch Pocket in place 3/4" from side and lower edge.



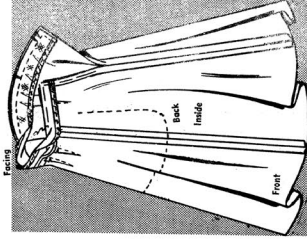
- 3.—a.—To make darts in Skirt Facing, on **INSIDE** fold along line of small *'s. Stitch 1/8" from fold, tapering to nothing at small *'s nearest notched edge, as shown. Press darts toward centers. Join center front seam of Facing.



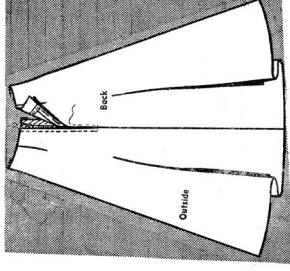
- b.—Slash along line of small *'s in Skirt interfacing. Lap slashed edges 1/4" at unnotched edge, tapering to nothing at small *'s nearest notched edge; stitch as shown.



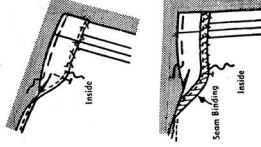
- Lap front edges of interfacing, matching seam lines. Stitch along seam line. Trim seam allowance close to stitching. Baste interfacing to **WRONG** side of Skirt Facing. Trim away 5/8" on lower unnotched edge of Facing and interfacing. Encase trimmed edge in straight seam binding.



- c.—With **RIGHT** sides together, join Facing to upper and back opening edges of Skirt, matching centers front. Trim seam; clip curve. Turn Facing to **INSIDE** and baste in place. Topstitch Facing to darts and seams.



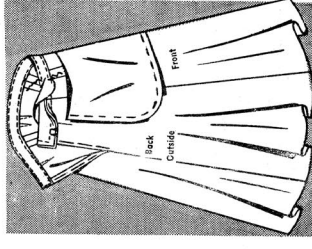
- 4.—Place back opening edges over closed zipper, having edges meeting at center of zipper, placing lower end of zipper at lower end of opening. Baste opening edges to each side of zipper and across lower end, turning in upper ends of tops. Machine-stitch as basted, using a cording foot. Sew hook and eye at upper edge.



- HEM**
- 5.—Mark length. Turn up lower edge along marking; baste. Mark depth of hem; trim evenly. Stitch under raw edge or finish with bias seam binding. Slip-stitch in place, easing in fullness.

SKIRT VIEW 2

- For darts and seams, see Step 1. For Pocket, see Step 2. Work saddle stitching over top-stitching on Pocket.



- WAISTBAND**
- 6.—Baste under seam allowance on back opening edges. Pin **WRONG** side of Skirt to **RIGHT** side of Waistband, matching centers and sides; baste. Stitch seam. Fold Band in half, lengthwise **RIGHT** sides together. Stitch ends; turn. Turn under seam allowance on remaining raw edge of Band and top-stitch over seam. If desired, continue stitching along remaining edge and ends. For zipper, see Step 4. For hem, see Step 5.

SKIRT VIEW 3

- Make same as View 2, omitting Pockets.

Simplicity®

Thank you for purchasing this Simplicity pattern. We made every effort to provide you with a high quality product.

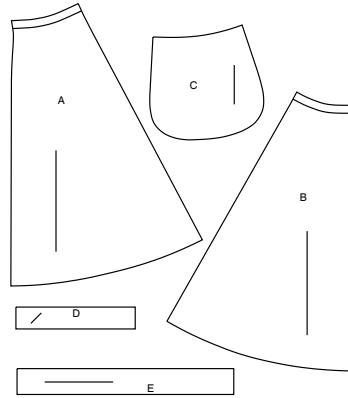
SUPPLEMENTAL CUTTING LAYOUTS

Sizes	8	10	12	14	16	18	20	22	24	26
European	34	36	38	40	42	44	46	48	50	52

FINISHED GARMENT MEASUREMENTS (Includes Design and Wearing Ease)

View	1,2,3 Waist	25	26	27½	29½	31½	33½	35½	37½	39½	41½	Ins.
View 1,2,3 Hip	46½	47½	49	51	53	55	57	59	61	63	"	
Width, lower edge												
View 1,2,3 Skirt	88	89	90½	92½	94½	96½	98½	100½	102½	104½	Ins.	
Finished back length from waist												
View 1,2,3 Skirt	29¼	29½	29¾	30	30¼	30½	30¾	31	31¼	31½	Ins.	

5 PIECES



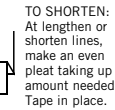
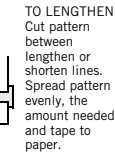
A SKIRT FRONT
 B SKIRT BACK
 C POCKET - VIEW 1 AND 2
 D SKIRT FACING - VIEW 1
 E WAISTBAND - VIEW 2 AND 3

General Directions

The Pattern

- SYMBOLS**
- GRAIN LINE: Place on straight grain of fabric parallel to selvage
 - PLACE SOLID LINE on fold of fabric.
 - CENTER FRONT OR BACK of garment.
 - NOTCHES
 - DOTS
 - CUTTING LINE
 - LENGTHEN OR SHORTEN LINES

ADJUST IF NEEDED
 Make adjustments before placing pattern on fabric.



SEAM ALLOWANCE: 5/8" (1.5cm) unless otherwise stated is included but not printed on MULTI-SIZE PATTERNS. Mark your size with colored felt tip pen. See chart on tissue for how to use MULTI-SIZE PATTERNS.

When lengthen or shorten lines are not given, make adjustments at lower edge of pattern.

Cutting/Marking

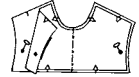
BEFORE CUTTING:
 PRESS pattern pieces with a warm dry iron. PRE-SHRINK fabric by pre-washing washables or steam-pressing non-washables.

CIRCLE your cutting layout.
 PIN pattern to fabric as shown in Cutting Layouts.

- FOR DOUBLE THICKNESS: Fold fabric with RIGHT sides together.
- FOR SINGLE THICKNESS: Place fabric RIGHT side up.
- FOR PILE, SHADED OR ONE WAY DESIGN FABRICS: Use "with nap" layouts

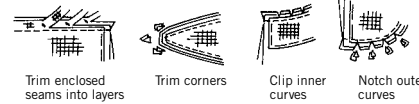
AFTER CUTTING:
 Transfer markings to WRONG side of fabric before removing pattern. Use pin and chalk method or dressmaker's tracing paper and wheel.

- To Quick Mark:**
- Snip edge of fabric to mark notches, ends of fold lines and center lines.
 - Pin mark dots.



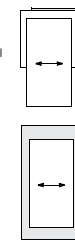
Sewing

- SEW garment following Sewing Directions.
- PIN or machine-baste seams matching notches.
- STITCH 5/8" (1.5 cm) seams unless otherwise stated.
- PRESS seams open unless otherwise indicated clipping when necessary so seams will lie flat.
- TRIM seams to reduce bulk, as shown below.



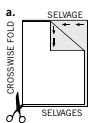
SPECIAL CUTTING NOTES

★ If layout shows a piece extending past fold, cut out all pieces except piece that extends.

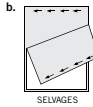


Open out fabric to single thickness. Cut extending piece on RIGHT side of fabric in position shown.

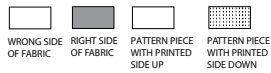
✳ Mark small arrows along both selvages indicating direction of nap or design. Fold fabric crosswise with RIGHT sides together, and cut along fold (a).



Turn one fabric layer around so arrows on both layers go in the same direction. Place RIGHT sides together (b).



Cutting Layouts

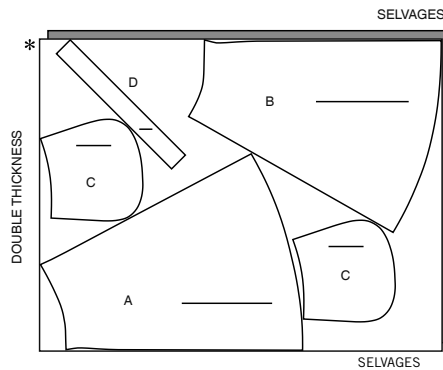


POSITION OF PATTERN PIECES MAY VARY SLIGHTLY ACCORDING TO YOUR PATTERN SIZE

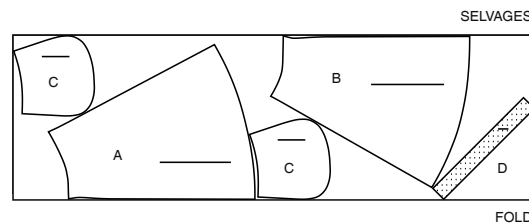
VIEW 1 SKIRT (WITH FOUR FABRIC POCKETS)

USE PIECES A B C D

45" (115CM) WITH NAP ALL SIZES



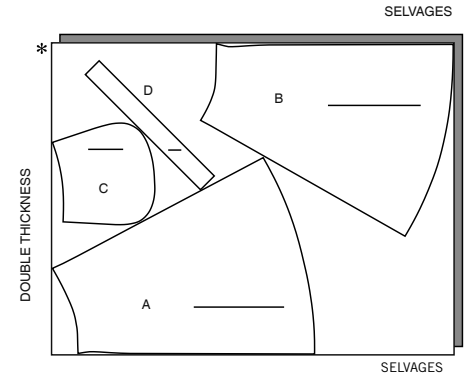
60" (150CM) WITH NAP ALL SIZES



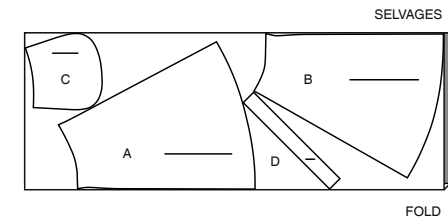
VIEW 1 SKIRT (WITH TWO FABRIC POCKETS)

USE PIECES A B C D

45" (115CM) WITH NAP ALL SIZES



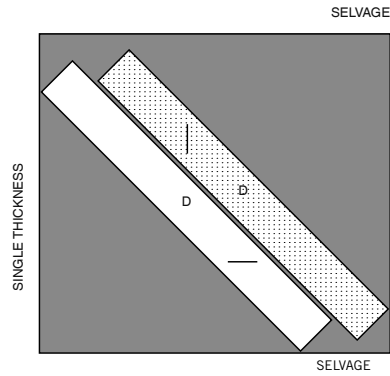
60" (150CM) WITH NAP ALL SIZES



CUTTING LAYOUTS CONTINUED ON PAGE 2

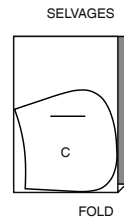
INTERFACING

USE PIECE D
25" (64CM)
ALL SIZES



VIEW 1,2 LINING (OPTIONAL)

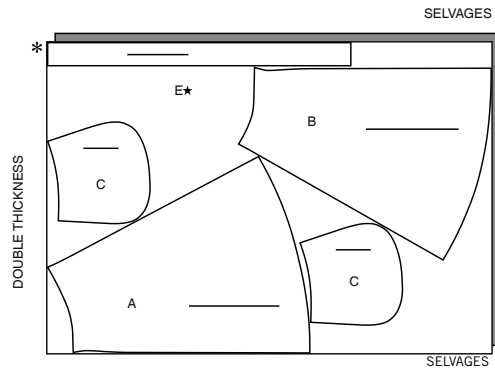
USE PIECE C
45" (115CM)
WITHOUT NAP
ALL SIZES



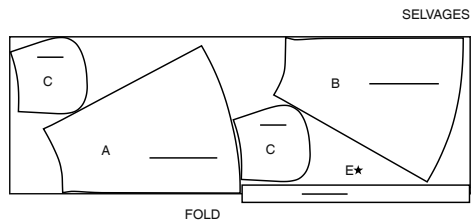
VIEW 2 SKIRT (WITH FOUR FABRIC POCKETS)

USE PIECES A B C E

45" (115CM)
WITH NAP
ALL SIZES
CUT ONE OF PIECE E



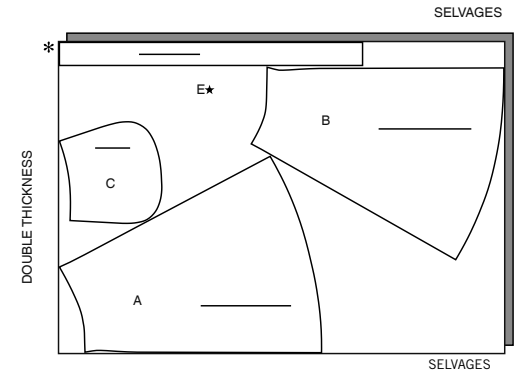
60" (150CM)
WITH NAP
ALL SIZES



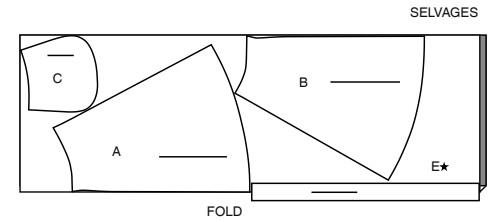
VIEW 2 SKIRT (WITH TWO FABRIC POCKETS)

USE PIECES A B C E

45" (115CM)
WITH NAP
ALL SIZES
CUT ONE OF PIECE E



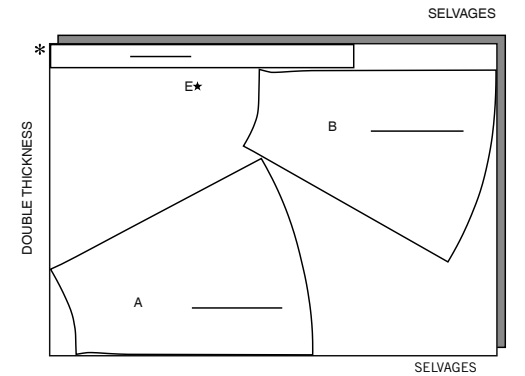
60" (150CM)
WITH NAP
ALL SIZES



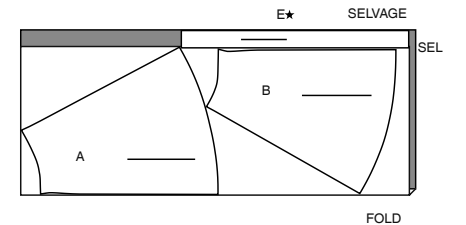
VIEW 3 SKIRT

USE PIECES A B E

45" (115CM)
WITH NAP
ALL SIZES
CUT ONE OF PIECE E



60" (150CM)
WITH NAP
ALL SIZES





Congrats!

You've completed your sewing adventure

**SHARE
YOUR** LOOK



Post your pattern and tag us
[@simplicity_creative_group](#) and [#simplicitypatterns](#)
for a chance to be featured on our social media.

Look for more PDF patterns at simplicity.com

Have a question or need help with your sewing project call us at
1-888-588-2700



Simplicity ©2024 a division of IG Design Group Americas Inc. • Atlanta, GA 30342 USA www.thedesigngroup.com • All Rights Reserved. www.simplicity.com • Made in the U.S.A. Fabriqué aux États-Unis.

To be used for individual private home use only and not for commercial or manufacturing purposes. • A usage privé seulement et non à des fins commerciales ou de production en série. • Para uso privado solamente, no se puede utilizar con propósitos de comercialización o de producción en serie.