

S3015

**Simplicity**

easy-to-sew



A



B



C



Designed and printed in USA.



Easy

**GIRLS' TOP, DRESS AND PANTS**

**Suggested Fabrics:** Challis, Chambray, Faux Suede Types, Lightweight Denim, Linen Types, Poplin, Sateen. **C also in** Corduroy. **Interfacing:** Lightweight Fusible.

**Notions:** A,B: 6" (15cm) length of 3/8" (3mm) elastic cording, two 3/8" (1.5cm) buttons. **Also for B:** 3/4 yd (0.7m) of 3/8" (1cm) elastic. **C:** 1 yd (1.0m) of 1" (2.5cm) elastic.

| Sizes  | 7    | 8   | 10  | 12  | 14  |      |
|--|------|-----|-----|-----|-----|------|
| <b>BODY MEASUREMENTS: Select pattern size based on body measurements</b> |      |     |     |     |     |      |
| Chest  | 26   | 27  | 28½ | 30  | 32  | Ins. |
| Waist  | 23   | 23½ | 24½ | 25½ | 26½ | "    |
| Hip  | 27   | 28  | 30  | 32  | 34  | "    |
| Back-neck to waist   | 11½  | 12  | 12¾ | 13½ | 14¼ | "    |
| Height   | 50   | 52  | 56  | 58½ | 61  | "    |
| Top A  | 45** | 1¾  | 2   | 2¼  | 2¼  | Yds. |
|  | 60** | 1¼  | 1½  | 1¾  | 1¾  | "    |

|                        |             |    |    |   |    |    |      |
|------------------------|-------------|----|----|---|----|----|------|
| <b>Interfacing A,B</b> | 20" - ¼ yd. |    |    |   |    |    |      |
| <b>Dress B</b>         | 45**        | 2¼ | 2¼ | 3 | 3¼ | 3¼ | Yds. |
|                        | 60**        | 1¾ | 1¾ | 2 | 2  | 2¼ | "    |

|                    |             |    |    |    |    |    |      |
|--------------------|-------------|----|----|----|----|----|------|
| <b>Pants C</b>     | 45**        | 1¾ | 1¾ | 1¾ | 2¼ | 2¼ | Yds. |
|                    | 60**        | 1¾ | 1¾ | 1¾ | 1¾ | 1¾ | "    |
| <b>Interfacing</b> | 20" - ¾ yd. |    |    |    |    |    |      |

**FINISHED GARMENT MEASUREMENTS (Includes Design and Wearing Ease)**

|   |     |     |     |     |     |      |
|---|-----|-----|-----|-----|-----|------|
| <b>C Hip</b>                                  | 30½ | 31½ | 33  | 34½ | 36½ | Ins. |
| <b>Width, lower edge</b>                      |     |     |     |     |     |      |
| <b>Top A, Dress B</b>                         | 52½ | 53½ | 55  | 56½ | 58½ | Ins. |
| <b>Width, each leg</b>                        |     |     |     |     |     |      |
| <b>Pants C</b>                                | 16¾ | 17¾ | 19½ | 21¼ | 22¾ | Ins. |
| <b>Finished back length from base of neck</b> |     |     |     |     |     |      |
| <b>Top A</b>                                  | 16½ | 17  | 17¾ | 18½ | 19¼ | Ins. |
| <b>Dress B</b>                                | 27  | 28  | 30  | 32  | 34  | "    |
| <b>Finished side length from waist</b>        |     |     |     |     |     |      |
| <b>Pants C</b>                                | 30  | 31½ | 34  | 36½ | 38  | Ins. |

\*with nap \*\*without nap

Facile

**HAUT, ROBE ET PANTALON POUR FILLETTES**

**Tissus Conseillés:** Challis, Chambray, Types simili daim, Denim léger, Types toile de lin, Popeline, Satinette. **C aussi en** Velours côtelé. **Entoilage:** Thermocollant léger.

**Mercerie:** A,B: 15cm de longueur de cordon élastique de 3mm, 2 boutons de 1.5cm. **Aussi pour B:** 0.7m d'élastique de 1cm. **C:** 1.0m d'élastique de 2.5cm.

| Tailles  | 7      | 8    | 10   | 12   | 14   |     |   |
|--|--------|------|------|------|------|-----|---|
| <b>MESURES DU CORPS: Choisissez la taille du patron basée sur les mesures du corps</b> |        |      |      |      |      |     |   |
| Poitrine   | 66     | 68.5 | 72.5 | 76   | 81.5 | cm  |   |
| Taille   | 58.5   | 59.5 | 62   | 65   | 67.5 | "   |   |
| Hanches  | 68.5   | 71   | 76   | 81.5 | 86.5 | "   |   |
| Dos du cou à la taille   | 29     | 30.5 | 32.5 | 34.5 | 36   | "   |   |
| Hauteur  | 127    | 132  | 143  | 149  | 155  | "   |   |
| Haut A   | 115cm* | 1.7  | 1.8  | 1.9  | 1.9  | 2.1 | m |
|  | 150cm* | 1.1  | 1.1  | 1.4  | 1.5  | 1.6 | " |

|                      |             |     |     |     |     |     |   |
|----------------------|-------------|-----|-----|-----|-----|-----|---|
| <b>Entoilage A,B</b> | 51cm - 0.2m |     |     |     |     |     |   |
| <b>Robe B</b>        | 115cm*      | 2.4 | 2.5 | 2.7 | 2.9 | 3.0 | m |
|                      | 150cm*      | 1.7 | 1.7 | 1.8 | 1.8 | 1.9 | " |

|                   |             |     |     |     |     |     |   |
|-------------------|-------------|-----|-----|-----|-----|-----|---|
| <b>Pantalon C</b> | 115cm*      | 1.1 | 1.6 | 1.7 | 2.1 | 2.2 | m |
|                   | 150cm*      | 1.0 | 1.0 | 1.1 | 1.4 | 1.4 | " |
| <b>Entoilage</b>  | 51cm - 0.3m |     |     |     |     |     |   |

**MESURES DES VÊTEMENTS FINI (Motif et aisance de port compris)**

|   |     |     |     |     |     |    |
|---|-----|-----|-----|-----|-----|----|
| <b>C Hanches</b>                                    | 77  | 80  | 84  | 88  | 93  | cm |
| <b>Largeur à l'ourlet</b>                           |     |     |     |     |     |    |
| <b>Haut A, Robe B</b>                               | 133 | 136 | 140 | 144 | 149 | cm |
| <b>Largeur, chaque jambe</b>                        |     |     |     |     |     |    |
| <b>Pantalon C</b>                                   | 43  | 45  | 50  | 54  | 58  | cm |
| <b>Longueur finie – dos, votre nuque à l'ourlet</b> |     |     |     |     |     |    |
| <b>Haut A</b>                                       | 42  | 43  | 45  | 47  | 49  | cm |
| <b>Robe B</b>                                       | 69  | 71  | 76  | 81  | 86  | "  |
| <b>Longueur finie – côté, taille à l'ourlet</b>     |     |     |     |     |     |    |
| <b>Pantalon C</b>                                   | 76  | 80  | 86  | 93  | 97  | cm |

\*avec sens \*\*sans sens



A



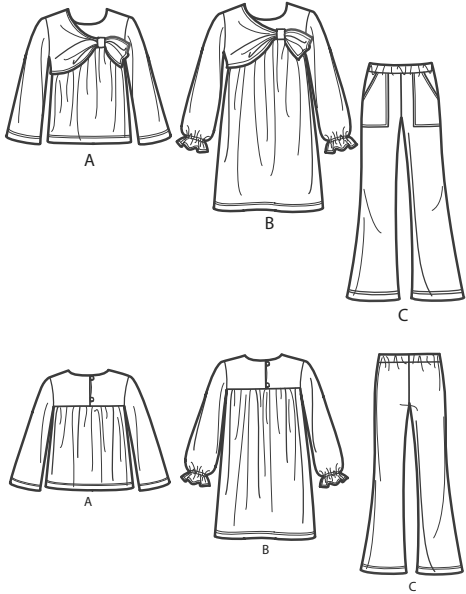
B



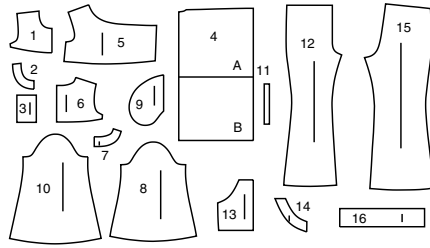
C

# Simplicity®

Thank you for purchasing this Simplicity pattern. We made every effort to provide you with a high quality product.



16 PIECES



- 1 Yoke Front-A,B
- 2 Front Interfacing-A,B
- 3 Knot-A,B
- 4 Front and Back-A,B
- 5 Front Overlay-A,B
- 6 Yoke Back-A,B
- 7 Back Interfacing-A,B
- 8 Sleeve-A
- 9 Pocket-B
- 10 Sleeve-B
- 11 Guide for Elastic-B
- 12 Front-C
- 13 Pocket-C
- 14 Pocket Facing-C
- 15 Back-C
- 16 Casing-C

## General Directions

### The Pattern

- SYMBOLS**
- GRAIN LINE: Place on straight grain of fabric parallel to selvage
  - PLACE SOLID LINE on fold of fabric.
  - CENTER FRONT OR BACK OF GARMENT.
  - NOTCHES
  - DOTS
  - CUTTING LINE
  - LENGTHEN OR SHORTEN LINES

**SEAM ALLOWANCE:** 5/8" (1.5cm) unless otherwise stated is included but not printed on MULTI-SIZE PATTERNS. Mark your size with colored felt tip pen. See chart on tissue for how to use MULTI-SIZE PATTERNS.

**ADJUST IF NEEDED**  
Make adjustments before placing pattern on fabric.

**TO LENGTHEN:**  
Cut pattern between lengthen or shorten lines. Spread pattern evenly, the amount needed and tape to paper.

**TO SHORTEN:**  
At lengthen or shorten lines, make an even pleat taking up amount needed. Tape in place.

When lengthen or shorten lines are not given, make adjustments at lower edge of pattern.

### Cutting/Marking

**BEFORE CUTTING:**  
PRESS pattern pieces with a warm dry iron. PRE-SHRINK fabric by pre-washing washables or steam-pressing non-washables.

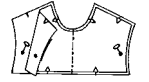
CIRCLE your cutting layout.  
PIN pattern to fabric as shown in Cutting Layouts.

- FOR DOUBLE THICKNESS: Fold fabric with RIGHT sides together.
- FOR SINGLE THICKNESS: Place fabric RIGHT side up.
- FOR PILE, SHADED OR ONE WAY DESIGN FABRICS: Use "with nap" layouts

**AFTER CUTTING:**  
Transfer markings to WRONG side of fabric before removing pattern. Use pin and chalk method or dressmaker's tracing paper and wheel.

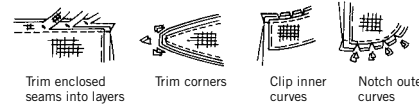
**To Quick Mark:**

- Snip edge of fabric to mark notches, ends of fold lines and center lines.
- Pin mark dots.



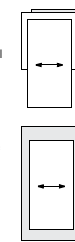
### Sewing

- SEW garment following **Sewing Directions**.
- PIN or machine-baste seams matching notches.
- STITCH 5/8" (1.5 cm) seams unless otherwise stated.
- PRESS seams open unless otherwise indicated clipping when necessary so seams will lie flat.
- TRIM seams to reduce bulk, as shown below.



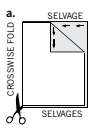
### SPECIAL CUTTING NOTES

★ If layout shows a piece extending past fold, cut out all pieces except piece that extends.

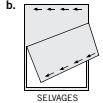


Open out fabric to single thickness. Cut extending piece on RIGHT side of fabric in position shown.

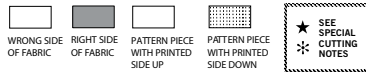
✱ Mark small arrows along both selvages indicating direction of nap or design. Fold fabric crosswise with RIGHT sides together, and cut along fold (a).



Turn one fabric layer around so arrows on both layers go in the same direction. Place RIGHT sides together (b).



## Cutting Layouts

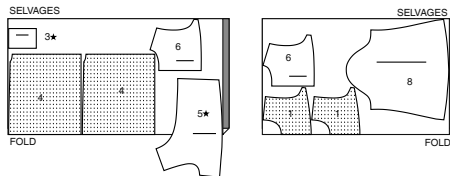


POSITION OF PATTERN PIECES MAY VARY SLIGHTLY ACCORDING TO YOUR PATTERN SIZE

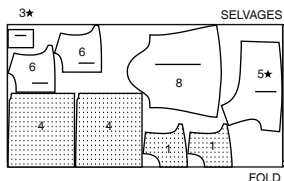
### TOP A

USE PIECES 1 3 4 5 6 8

45" (115CM) WITH NAP ALL SIZES



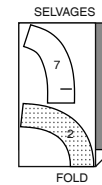
60" (150CM) WITH NAP ALL SIZES



### INTERFACING A, B

USE PIECES 2 7

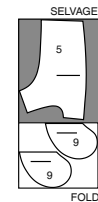
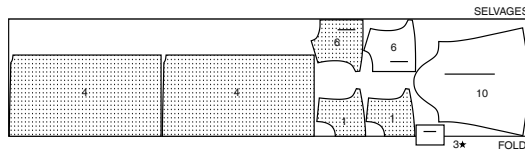
20" (51CM) ALL SIZES



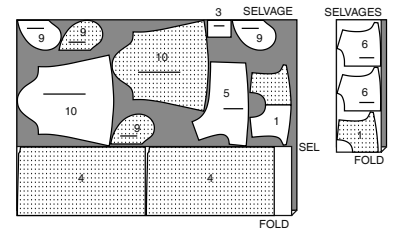
### DRESS B

USE PIECES 1 3 4 5 6 9 10

45" (115CM) WITH NAP ALL SIZES



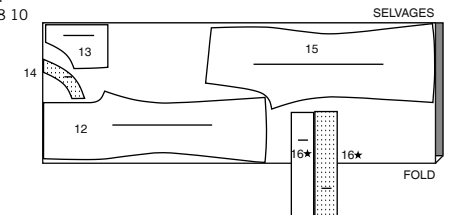
60" (150CM) WITH NAP ALL SIZES



### PANTS C

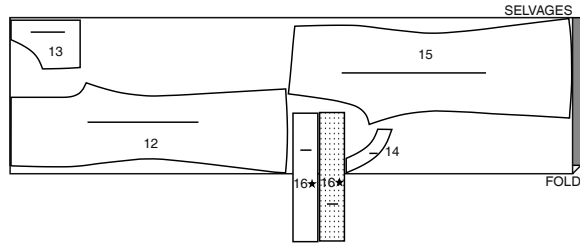
USE PIECES 12 13 14 15 16

45" (115CM) WITH NAP SIZES 7 8 10

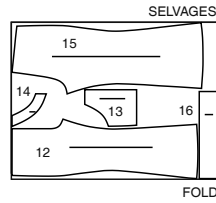


CUTTING LAYOUTS CONTINUED ON PAGE 2

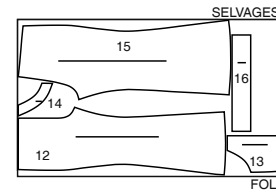
45" (115CM)  
WITH NAP  
SIZES 12 14



60" (150CM)  
WITH NAP  
SIZES 7 8 10

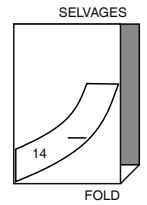


60" (150CM)  
WITH NAP  
SIZES 12 14



**INTERFACING C**  
USE PIECE 4

20" (51CM)  
ALL SIZES



## Sewing Directions

**FABRIC KEY** RIGHT SIDE WRONG SIDE INTERFACING LINING (RIGHT SIDE) LINING (WRONG SIDE)

Read **General Directions** on page 1 before you begin.

Sewing methods shown in **Bold** are defined below:  
**EASE/GATHER** - Loosen needle tension slightly. With **RIGHT** side up, stitch 5/8" (1.5cm) from cut edge using a long stitch. Stitch again 1/4" (6mm) from the first stitching within the seam allowance.

**EDGE FINISH** - Stitch 1/4" (6mm) from edge, turn under edge along stitching and stitch or zig-zag, or overlock/serge raw edges.

**EDGESTITCH** - Stitch close to finished edge or seam.

**NARROW HEM** - Press under hem allowance as indicated on tissue pattern. To form narrow hem, tuck under raw edge to meet crease. Press. Stitch hem in place.

**REINFORCE** - Stitch along seamline where indicated in sewing instructions, using small machine stitches.

**SLIPSTITCH** - Slide needle through a folded edge, then pick up a thread of underneath fabric.

**STAY-STITCH** - Stitch 1/2" (1.3cm) from cut edge in direction of arrows. This stitching stays in permanently to prevent stretching on curved edges. (Shown only in the first illustration.)

**TOPSTITCH** - On outside, stitch 1/4" (6mm) from edge, seam or previous

**UNDERSTITCH** - Press facing and seam away from garment, stitching through facing and seam allowances close to seam.

### SEWING TUTORIALS



SCAN ME

Build your skills viewing short, easy-to-follow videos at [simplicity.com/sewingtutorials](http://simplicity.com/sewingtutorials)

## TOP A, DRESS B

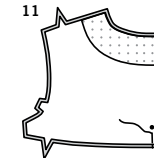
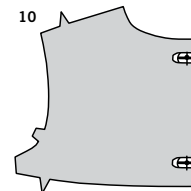
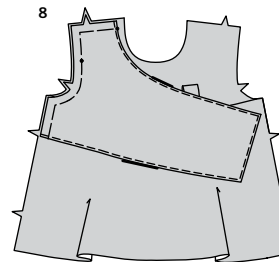
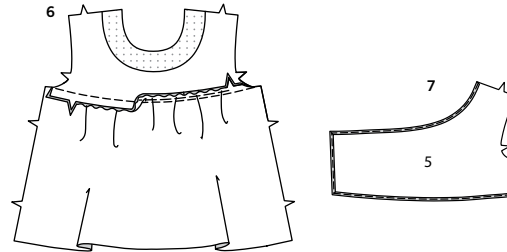
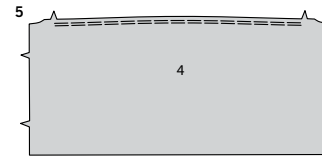
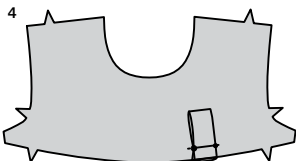
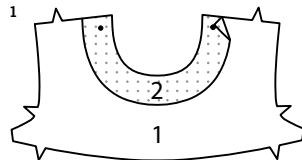
### FRONT AND BACK

**1.** Pin **FRONT INTERFACING** (2) to **WRONG** side of one **YOKE FRONT** (1), matching small dots. Fuse interfacing in place following manufacturer's directions. **NOTE:** Remaining yoke front section will be used as facing.

**2.** With **RIGHT** sides together, fold **KNOT** (3) in half lengthwise. Stitch, leaving ends open.

**3.** Turn **RIGHT** side out. Press. Baste ends.

**4.** Fold knot in half, having raw ends even. On **OUTSIDE**, pin knot to yoke front, matching small and large dots, having raw edges even. Baste lower edge.



**5.** For front, **GATHER** upper edge of one **FRONT AND BACK** (4) section between notches. **NOTE:** Remaining front and back section will be used as back.

**6.** With **RIGHT** sides together, pin front to lower edge of yoke front, matching centers and notches. Pull up gathering stitches and adjust gathers evenly. Baste. Stitch. Trim. Press seam toward yoke front.

**7.** Make **NARROW HEM** at upper, side and lower edges of **FRONT OVERLAY** (5), as shown.

**8.** With **RIGHT** sides up, pin front overlay to front, matching small dots and notches. Baste right shoulder, armhole and side edges.

**9.** For each side, pin one **BACK INTERFACING** (7) section to **WRONG** side of one **YOKE BACK** (6), matching small dots. Fuse interfacing in place following manufacturer's directions. **NOTE:** Remaining yoke back sections will be used as facing.

**10.** Cut two elastic loops approximately 3" (7.6cm) long. Fold loop in half, bringing ends together. On **OUTSIDE**, pin loops to left back at small dots, having ends even with raw edge. Baste. For clarity purposes, loop basting will be shown in first illustration only.

**11.** Stitch yoke back sections together at center back, leaving open from 1/4" (6mm) below lower small dot to upper edge.

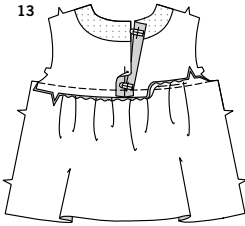
## S3015

3 of 4

12



13



**12. GATHER** upper edge of back between notches.

**13.** With **RIGHT** sides together, pin back to lower edge of yoke back, matching centers and notches. Pull up gathering stitches and adjust gathers evenly. Baste. Stitch. Trim. Press seam toward yoke back.

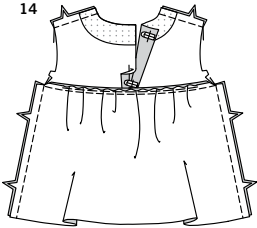
**FOR VIEW A**

**14.** Stitch front to back at shoulders and sides.

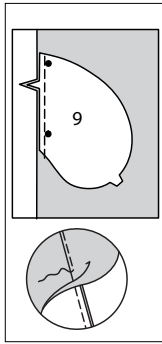
**FOR VIEW B**

**15.** With **RIGHT** sides together, pin one **POCKET (9)** to front at each side, matching large dots, having raw edges even. Stitch in  $3/8"$  (1cm) seam. **UNDERSTITCH** pocket.

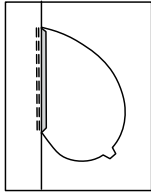
14



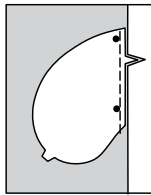
15



16



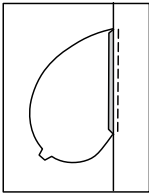
17



**16.** Press seam toward pocket, pressing pocket out.

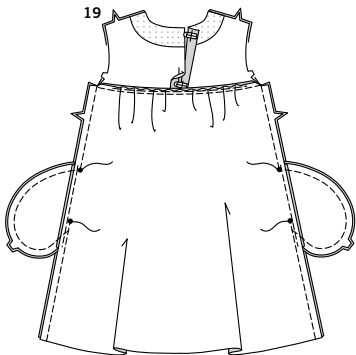
**17.** With **RIGHT** sides together, pin one remaining pocket to back at each side, matching large dots, having raw edges even. Stitch in  $3/8"$  (1cm) seam.

18

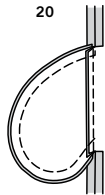


**18.** Press seam toward pocket, pressing pocket out.

19



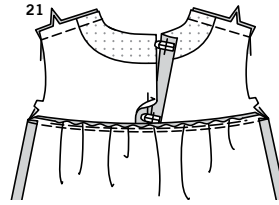
20



**19.** Pin front to back at side seams, matching large dots. Stitch side seams, leaving an opening between large dots. Stitch pocket edges together to side seam.

**20.** Clip back seam allowances above and below pockets. Press seams open above and below clips. Press pockets toward front.

21



22



**21.** Stitch front to back at shoulders.

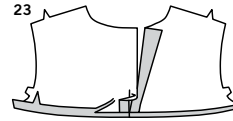
**FACING**

**22.** Stitch yoke back facing sections together at center back, leaving open from  $1/4"$  (6mm) below lower small dot to upper edge.

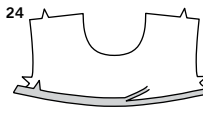
**23.** Press under seam allowance on lower edge of yoke back facing. Trim pressed seam allowance to  $3/8"$  (1cm).

**24.** Press under seam allowance on lower edge of yoke front facing. Trim pressed seam allowance to  $3/8"$  (1cm).

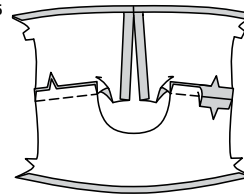
**25.** Stitch yoke front facing to yoke back facing at shoulders.



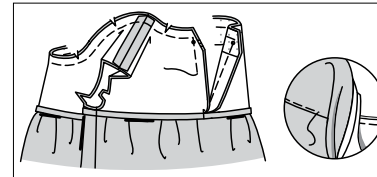
24



25



26



**26.** With **RIGHT** sides together, pin yoke facing to garment, matching centers and small dots. Stitch neck and back edges, being careful not to catch overlay in stitching, breaking stitching at back opening, as shown. Clip curves. Trim seam and corners. **UNDERSTITCH** facing as far as possible.

**27.** Turn facing to **INSIDE**. Press. **SLIPSTITCH** pressed edges over seams. Baste armhole edges.

**SLEEVE AND FINISHING****FOR VIEW A**

**28.** **EASESTITCH** upper edge of **SLEEVE (8)** between outer small dots.

**29.** Stitch sleeve seam. Press seam open.

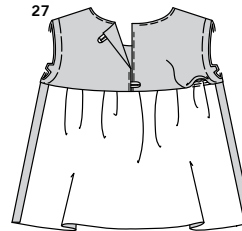
**30.** Turn up  $1\frac{1}{2}"$  (3.8cm) hem on lower edge of sleeve. Turn  $1/4"$  (6mm) on raw edge of hem to wrong side; press. Stitch close to inner edge of hem. Stitch again  $1/4"$  (6mm) below previous stitching.

**FOR VIEW B**

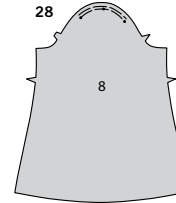
**31.** **EASESTITCH** upper edge of **SLEEVE (10)** between outer small dots.

**32.** Stitch sleeve seam. Press seam open.

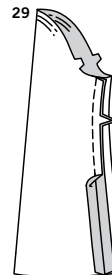
27



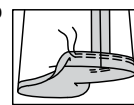
28



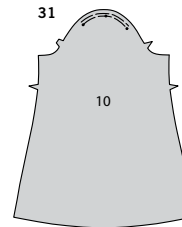
29



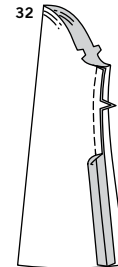
30

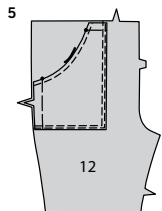
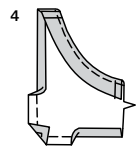
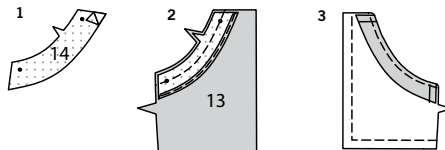
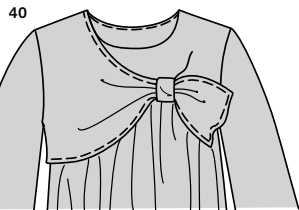
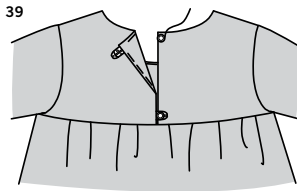
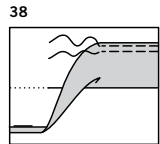
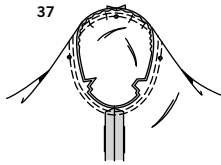
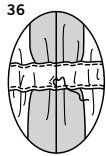
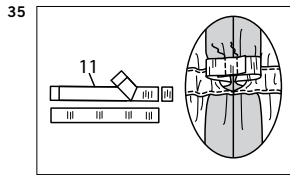
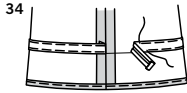
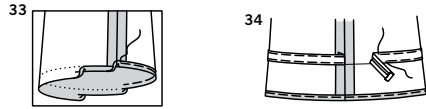


31



32





**33.** Make **NARROW HEM** at lower edge of sleeve.

**34.** To form casing, on **INSIDE**, place lower edge of bias tape along casing line, turning in ends to meet at seam. Pin in place. Stitch close to both long edges.

**35.** Cut two pieces of elastic the length of **GUIDE FOR ELASTIC (11)**. Insert elastic through opening in casing. Overlap ends and hold with a safety pin. Stitch ends of elastic together securely.

**36.** **SLIPSTITCH** opening edges of bias tape. Distribute fullness evenly.

#### FOR VIEWS A, B

**37.** With **RIGHT** sides together, pin sleeve to garment at armhole edge, placing center small dot at shoulder seam, matching remaining small dots. Pull up ease stitches to fit; baste. Stitch. Stitch again 1/4" (6mm) away in seam allowance. Trim close to stitching. Press seam allowances flat. Turn seam toward sleeve.

**38.** Turn up 1 1/2" (3.8cm) hem on lower edge of garment. Turn 1/4" (6mm) on raw edge of hem to wrong side; press. Stitch close to inner edge of hem. Stitch again 1/4" (6mm) below previous stitching.

**39.** On **OUTSIDE**, sew buttons to right back, opposite loops, as shown.

**40.** To wear, insert overlay through knot, as shown. Tack in place.

## PANTS C

### FRONT AND BACK

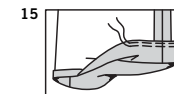
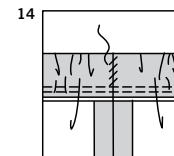
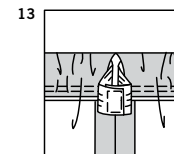
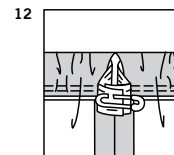
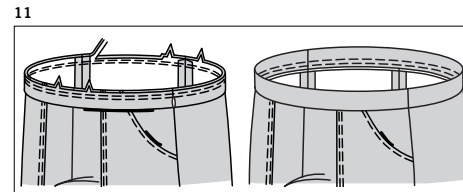
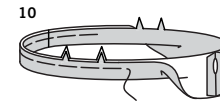
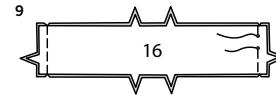
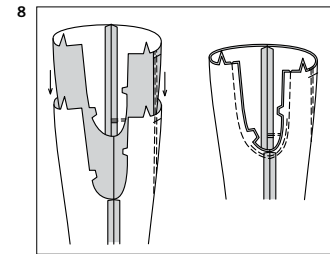
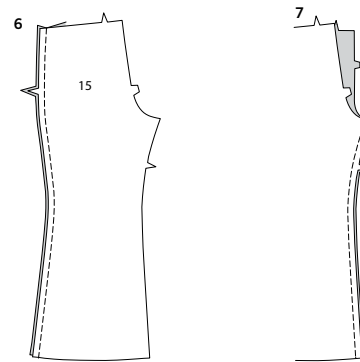
**1.** Pin **INTERFACING (14)** to **WRONG** side of **POCKET FACING (14)**, matching notches and small dots. Fuse interfacing in place following manufacturer's directions.

**2.** **EDGE-FINISH** lower unnotched edge of pocket facing. With **RIGHT** sides together, pin pocket facing to upper side edge of **POCKET (13)**, matching notches and small dots. Stitch. Trim seam.

**3.** Turn pocket facing to inside. Press. Baste upper and side edges. **TOPSTITCH** seam. Stitch along seam line on front and lower edges.

**4.** Press under raw edges along stitching, diagonally folding corner, as shown.

**5.** On **OUTSIDE**, pin pocket to **FRONT (12)**, matching small dots, placing pressed edges along pocket line. **EDGE-STITCH** and **TOPSTITCH** pressed edges. Baste upper and side edges.



**6.** Stitch **BACK (15)** to front at side.

**7.** Stitch back to front at inner leg seam.

**8.** With **RIGHT** sides together, insert one leg **INSIDE** the other. With **RIGHT** sides together, pin center seam, matching inner leg seams and notches. Stitch. **REINFORCE** seam.

**9.** Stitch **CASING (16)** sections together at side seams, leaving open between small dots, as shown.

**10.** With **WRONG** sides together, fold casing in half lengthwise, matching notches, having raw edges even. Baste raw edges together. The side with the opening is the underside of the casing.

**11.** With the underside of the casing toward you, pin casing to upper edge, matching centers, notches and side seams. Stitch. Stitch again 1/4" (6mm) away in seam allowance. Trim close to stitching. Press seam toward pants, pressing casing out.

**12.** Cut a piece of elastic to fit waist plus 1" (2.5cm). Insert elastic through opening in casing. Overlap ends and hold with a safety pin.

**13.** Stitch ends of elastic together securely.

**14.** **SLIPSTITCH** opening. Distribute fullness evenly.

**15.** Turn up 1 1/2" (3.8cm) hem on lower edge of pants. Turn 1/4" (6mm) on raw edge of hem to wrong side; press. Stitch close to inner edge of hem. Stitch again 1/4" (6mm) below previous stitching.



# Congrats!

You've completed your sewing adventure

---

**SHARE  
YOUR** LOOK



Post your pattern and tag us  
[@simplicity\\_creative\\_group](#) and [#simplicitypatterns](#)  
for a chance to be featured on our social media.

Look for more PDF patterns at [simplicity.com](https://www.simplicity.com)

Have a question or need help with your sewing project call us at  
1-888-588-2700



Simplicity ©2024 a division of IG Design Group Americas Inc. • Atlanta, GA 30342 USA [www.thedesigngroup.com](http://www.thedesigngroup.com) • All Rights Reserved. [www.simplicity.com](http://www.simplicity.com) • Made in the U.S.A. Fabriqué aux États-Unis.

To be used for individual private home use only and not for commercial or manufacturing purposes. • A usage privé seulement et non à des fins commerciales ou de production en série. • Para uso privado solamente, no se puede utilizar con propósitos de comercialización o de producción en serie.