

S3014

Simplicity



A



C



A,B

Designed and printed in USA.

Average

CHILDREN'S JACKET AND SKIRTS

Suggested Fabrics: A: Corduroy, Denim, Faux Fur/Fur-Like, Nylon Blends, Poplin, Sherpa. B,C: Chambray, Chino, Corduroy, Cotton Blends, Lightweight Denim, Linen Blends, Twill. **Lining:** Cotton Blends, Polyester Blends, Rayons. **Interfacing A:** Lightweight Fusible or sew-in. **Interfacing C:** Lightweight Fusible.

Notions: A: Three toggle closures. B,C: 1½ yds. (1.0m) of 1¼" (3cm) elastic, four ¾" - 1" (2cm - 2.5cm) buttons. **Also for C:** Optional toggle closure.

Sizes	3	4	5	6	7	8	
BODY MEASUREMENTS: Select pattern size based on body measurements							
Chest	22	23	24	25	26	27	Ins.
Waist	20½	21	21½	22	23	23½	"
Hip	—	24	25	26	27	28	"
Back-neck to waist	9	9½	10	10½	11½	12	"
Approx. Height	38	41	44	47	50	52	"
Jacket A	60**	1	1½	1½	1½	1½	Yds.
Lining	45***	¾	¾	¾	1	1	"
Interfacing - 20" - ¾ yd.							
Skirt B	45/60**	¾	¾	¾	¾	¾	Yd.
Skirt C	45**	¾	¾	¾	1	1	Yd.
	60**	¾	¾	¾	¾	¾	"
Interfacing - 20" - ¼ yd.							

FINISHED GARMENT MEASUREMENTS (Includes Design and Wearing Ease)

A Chest	27	28	29	30	31	32	Ins.
A Waist	27½	28½	29½	30½	31½	32½	"
B Hip	26	27	28	29	30	31	"
Width, lower edge							
Jacket A	29	30	31	32	33	34	Ins.
Skirt B	26	27	28	29	30	31	"
Finished back length from base of neck							
Jacket A	12½	14	16	18	20	22	Ins.
Finished back length from waist							
Skirt B	10	11	12½	14	15½	17	Ins.

*with nap **without nap

Moins Facile

VESTE ET JUPES POUR ENFANTS

Tissus Conseillés: A: Velours Côtelé, Denim, Fourrures Synthétiques/Imitation Fourrure, Mélangés de nylon, Popeline, Sherpa. B,C: Chambray, Chino, Velours Côtelé, Cotonnades, Denim Léger, Lin mélangés, Twill. **Doubleure:** Cotonnades, Mélangés de polyester, Rayonnes. **Entoilage A:** Thermocollant léger ou à coudre. **Entoilage C:** Thermocollant léger

Merceria: A: 3 fermetures à bascule. B,C: 1.0m d'élastique de 3cm, 4 boutons de 2cm - 2.5cm. **Aussi pour C:** Fermeture à bascule (facultatif).

Tailles	3	4	5	6	7	8	
MESURES DU CORPS: Choisissez la taille du patron basée sur les mesures du corps							
Poitrine	56	58	61	64	66	69	cm
Taille	52	53	55	56	58	60	"
Hanches	—	61	64	66	69	71	"
Dos du cou à la taille	23	24	25.5	27	29.5	31	"
Taille approx.	97	104	112	119	127	132	"
Veste A	150cm*	0.9	1.0	1.0	1.0	1.0	m
Doubleure	115cm**	0.8	0.8	0.8	0.9	0.9	"
Entoilage - 51cm - 0.8m							
Jupe B	115/150cm*	0.7	0.7	0.7	0.7	0.8	m
Jupe C	115cm*	0.8	0.8	0.8	0.8	0.9	m
	150cm*	0.6	0.6	0.6	0.6	0.7	"
Entoilage - 51cm - 0.2m							

MESURES DES VÊTEMENTS FINI (Motif et aisance de port compris)

A Poitrine	69	71	74	76	79	81	cm
A Taille	70	72	75	77	80	83	"
B,C Hanches	66	69	71	74	76	79	"
Largeur à l'ourlet							
Veste A	74	76	79	81	84	86	cm
Jupe B	66	69	71	74	76	79	"
Longueur finie - dos, votre nuque à l'ourlet							
Veste A	32	36	41	46	51	56	cm
Longueur finie - dos, taille à l'ourlet							
Jupe B,C	25	28	32	36	39	43	cm

*avec sens **sans sens



A

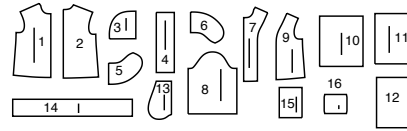


B,C

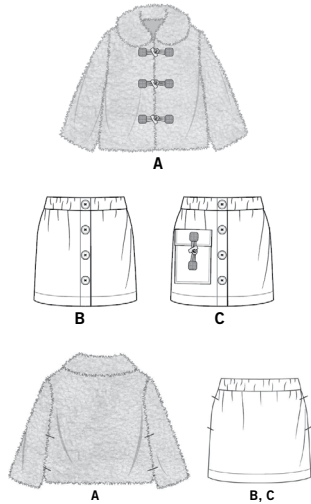
Simplicity®

Thank you for purchasing this Simplicity pattern.
We made every effort to provide you with a high quality product.

16 PIECES



- 1 Front-A
- 2 Back-A
- 3 Pocket-A
- 4 Underlap-A
- 5 Upper Collar-A
- 6 Under Collar-A
- 7 Front Facing-A
- 8 Sleeve-A
- 9 Front Lining-A
- 10 Right Front-B,C
- 11 Left Front-B,C
- 12 Back-B,C
- 13 Side Pocket-B,C
- 14 Casings-B,C
- 15 Right Pocket-C
- 16 Flap-C



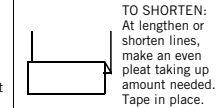
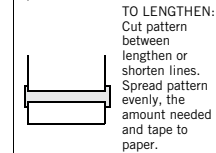
General Directions

The Pattern

- SYMBOLS**
- GRAIN LINE Place on straight grain of fabric parallel to selvage
 - PLACE SOLID LINE on fold of fabric.
 - CENTER FRONT OR BACK of garment.
 - NOTCHES
 - DOTS
 - CUTTING LINE
 - LENGTHEN OR SHORTEN LINES

SEAM ALLOWANCE: 5/8" (1.5cm) unless otherwise stated is included but not printed on MULTI-SIZE PATTERNS. Mark your size with colored felt tip pen. See chart on tissue for how to use MULTI-SIZE PATTERNS.

ADJUST IF NEEDED
Make adjustments before placing pattern on fabric.



When lengthen or shorten lines are not given, make adjustments at lower edge of pattern.

Cutting/Marking

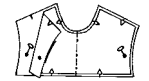
BEFORE CUTTING:
PRESS pattern pieces with a warm dry iron. PRE-SHRINK fabric by pre-washing washables or steam-pressing non-washables.

CIRCLE your cutting layout.
PIN pattern to fabric as shown in Cutting Layouts.

- FOR DOUBLE THICKNESS: Fold fabric with RIGHT sides together.
- FOR SINGLE THICKNESS: Place fabric RIGHT side up.
- FOR PILE, SHADED OR ONE WAY DESIGN FABRICS: Use "with nap" layouts

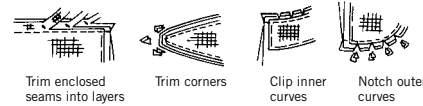
AFTER CUTTING:
Transfer markings to WRONG side of fabric before removing pattern. Use pin and chalk method or dressmaker's tracing paper and wheel.

- To Quick Mark:**
- Snip edge of fabric to mark notches, ends of fold lines and center lines.
 - Pin mark dots.



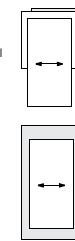
Sewing

- SEW garment following **Sewing Directions**.
- PIN or machine-baste seams matching notches.
- STITCH 5/8" (1.5 cm) seams unless otherwise stated.
- PRESS seams open unless otherwise indicated clipping when necessary so seams will lie flat.
- TRIM seams to reduce bulk, as shown below.

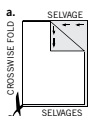


SPECIAL CUTTING NOTES

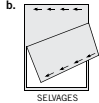
★ If layout shows a piece extending past fold, cut out all pieces except piece that extends.



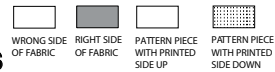
✱ Mark small arrows along both selvages indicating direction of nap or design. Fold fabric crosswise with RIGHT sides together, and cut along fold (a).



Turn one fabric layer around so arrows on both layers go in the same direction. Place RIGHT sides together (b).



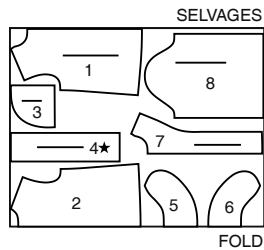
Cutting Layouts



POSITION OF PATTERN PIECES MAY VARY SLIGHTLY ACCORDING TO YOUR PATTERN SIZE

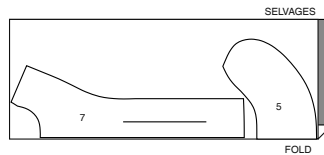
JACKET A
USE PIECES 1 2 3 4 5 6 7 8

60" (150CM) WITH NAP ALL SIZES



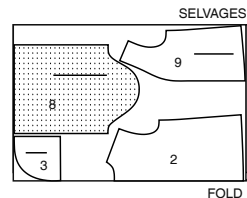
INTERFACING A
USE PIECES 5 7

20" (51CM) ALL SIZES



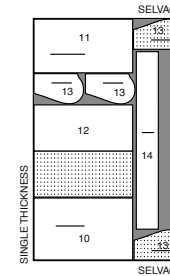
LINING A
USE PIECES 2 3 8 9

45" (115CM) WITHOUT NAP ALL SIZES



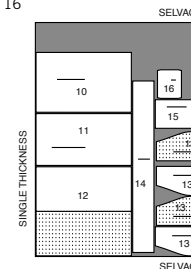
SKIRT B
USE PIECES 10 11 12 13 14

45" TO 60" (115CM TO 150CM) WITH NAP ALL SIZES

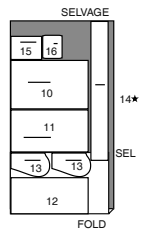


SKIRT C
USE PIECES 10 11 12 13 14 15 16

45" (115CM) WITH NAP ALL SIZES

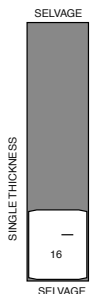


60" (150CM) WITH NAP ALL SIZES




INTERFACING C
USE PIECE 16

20" (51CM) ALL SIZES



Sewing Directions

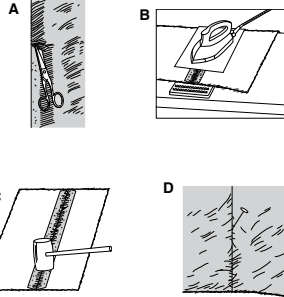
FABRIC KEY  Read **General Directions** on page 1 before you begin.

Sewing methods in **BOLD TYPE** have Sewing Tutorial Video available. Scan **QR CODE** to watch videos:

SEWING TUTORIALS



Build your skills viewing short, easy-to-follow videos at [simplicity.com/sewingtutorials](https://www.simplicity.com/sewingtutorials)



CATCHSTITCH - See **how to catchstitch** video.

EASE/GATHER - See **sewing two row gathers** video.

EDGESTITCH - See **how to edgestitch** video.

REINFORCE - See **how to reinforce** video.

SLEEVE - See **sewing a set in sleeve** video.

SLIPSTITCH - See **how to slip-stitch** video.

STAYSTITCH - See **how to do stay-stitching** video.

TOPSTITCH - See **how to topstitch** video.

UNDERSTITCH - see **how to understitch** video.

FINISH - Stitch 1/4" (6mm) from raw edge and finish with one of the following: (1) Pink OR (2) Overcast OR (3) Turn in along stitching and stitch close to fold OR (4) Overlock.

OPTIONAL FOR HEMS: Apply Seam Binding.

INTERFACING- Pin interfacing to **WRONG** side of fabric. Fuse interfacing in place following manufacturer's directions.

SIMPLY THE BEST SEWING TECHNIQUES FOR FUR FABRICS

A. Hand-baste seams to prevent slipping. Gather by hand. For high pile fabrics, shear away 1/2" (1.3cm) within the seam allowance.

B. Never place iron directly on fur fabric.

Press on **WRONG** side, using a velvet board and cloth.

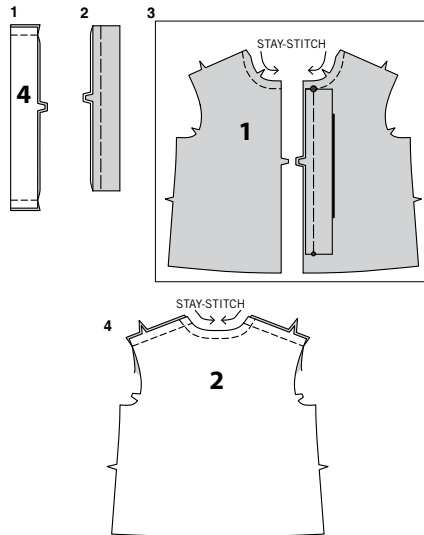
C. Heavier fur fabrics may need some pounding with a heavy object to keep seams and edges flat.

D. On **OUTSIDE**, with a pin, pick the pile up along the seams.

IMPORTANT: When using deep pile furs, use a longer stitch and looser tension when stitching. Release the presser foot of the machine if the fabric is especially thick.

JACKET A

NOTE: Cut back and sleeve lining sections 1"(2.5cm) shorter than fabric sections.

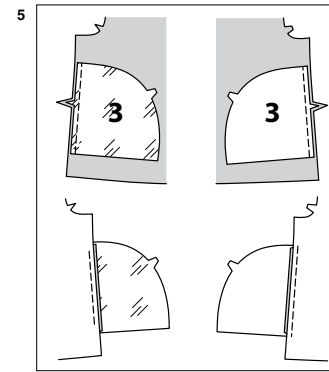


1. Fold **UNDERLAP** (4) in half lengthwise, with **RIGHT** sides together. Stitch ends.

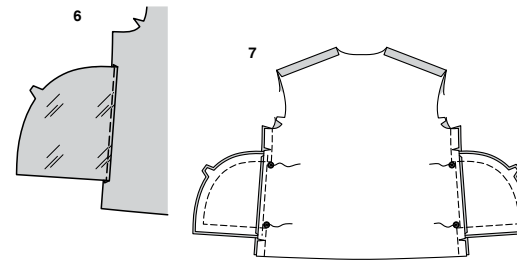
2. Turn underlap **RIGHT** side out. Press. Baste raw edges together.

3. STAYSTITCH neck edge of **FRONT** (1) sections, in direction of arrows.
On **OUTSIDE**, pin underlap to **LEFT** side of front matching large and small dots, having raw edges even. Baste.

4. STAYSTITCH neck edge of **BACK** (2) in direction of arrows. With **RIGHT** sides together, stitch front to back at shoulder seams.

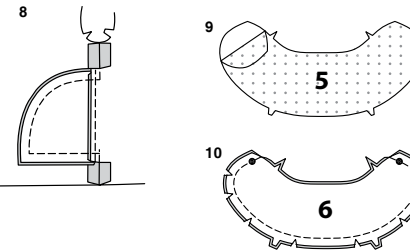


5. Stitch one **POCKET** (3) lining section to front at each side in a 1/4"(6mm) seam. Press seams toward pockets.
Stitch one pocket fabric section to back at each side in a 1/4"(6mm) seam. Press seams toward pockets, pressing pockets out.



6. UNDERSTITCH front pocket lining.

7. Stitch front and back together at sides, leaving opening between large dots. Stitch pocket edges together to side seams. Clip back seam allowances above and below pockets.

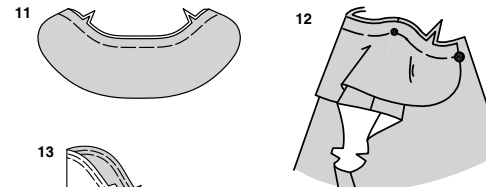


8. Turn pockets toward front along seamlines; press.

9. APPLY INTERFACING to **WRONG** side of **UPPER COLLAR** (5).

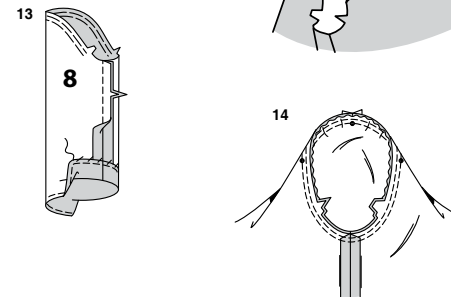
10. With **RIGHT** sides together, pin upper collar to **UNDER COLLAR** (6) having raw edges even, matching dots. Stitch leaving single notched edge open. Trim seam, clip curves.

11. Turn collar **RIGHT** side out. Press. Baste raw edges together.



12. On **OUTSIDE**, pin collar to neck edge matching large dots, placing small dots at shoulder seams. Clip neck edge to stay-stitching if necessary. Baste.

13. EASESTITCH top of **SLEEVE** (8) between notches. Stitch underarm seam. Press up hem.
FINISH raw edge of sleeve. **SLIPSTITCH** hem in place.

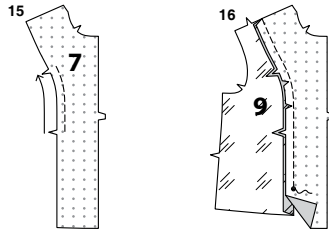


14. Turn sleeve **RIGHT** side out.

Hold garment **WRONG** side out with armhole toward you. With **RIGHT** sides together, pin sleeve to armhole edge with center small dot at shoulder seam, matching underarm seams, notches and remaining small dots. Pull up ease stitches to fit.

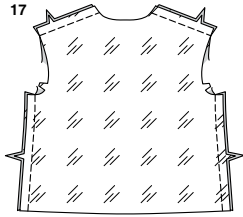
To distribute fullness evenly, slide fabric along bobbin threads until there are no puckers or tucks on the seam line. Baste. Stitch. Stitch again 1/8" (3mm) from first stitching. Trim seam below notches close to stitching. Press only the seam allowance, shrinking out fullness.

TIP: For more assistance when inserting sleeves, see sewing a set in sleeve video.

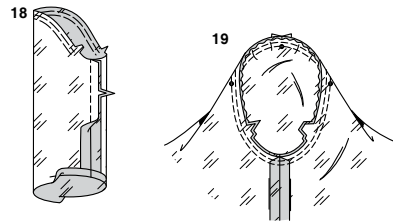


15. APPLY INTERFACING to WRONG side of FRONT FACING (7). **STAYSTITCH** side edge of facing between notches.

16. With RIGHT sides together, pin FRONT LINING (9) to side edge of facing matching notches, clipping to stay-stitching if necessary. Baste. Stitch ending at small dot. Press seam toward lining.

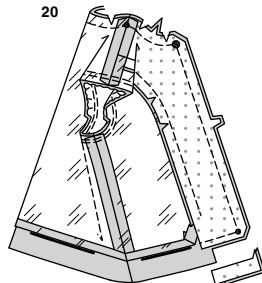


17. With RIGHT sides together, stitch front to back at shoulders and side seams.

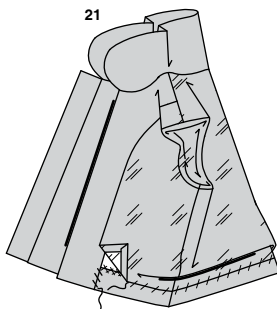


18. EASESTITCH top of sleeve between notches. Stitch underarm seam. Press up hem.

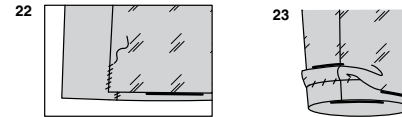
19. Insert sleeve lining in same manner as for sleeve, shown in step 14.
TIP: For more assistance when inserting sleeves, see sewing a set in sleeve video.



20. Press under 1/2" (1.3cm) on lower edge of lining. With RIGHT sides together, pin lining and facing to jacket, matching centers back, small and large dots. Baste. Stitch front and neck edges and across facing 1-1/2" (3.8cm) from lower edge. Trim lower edge of facing close to stitching. Trim lower edge of garment to within 5/8" (1.5cm) of inner edge of facing.

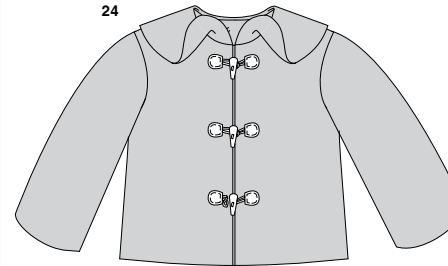


21. Turn facing and lining to INSIDE; press, turning up jacket hem. **CATCHSTITCH** jacket hem in place. Hand-sew facing to hem with small stitches. Slip sleeve lining in place. Tack seams of jacket and lining together loosely. **SLIPSTITCH** pressed edge of lining 1" (2.5cm) above lower edge of jacket.



22. SLIPSTITCH remaining front edge of lining to facing.

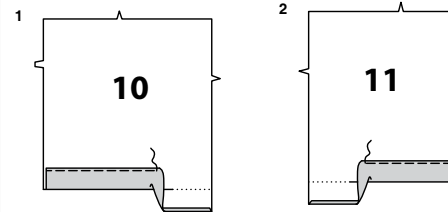
23. SLIPSTITCH pressed edge of sleeve lining over seam.



24. On OUTSIDE, pin loop half of toggle closure to RIGHT side of front, centering along markings. **EDGESTITCH** in place. Pin bar half of closure to LEFT side of front, in same manner. **EDGESTITCH** toggle in place.

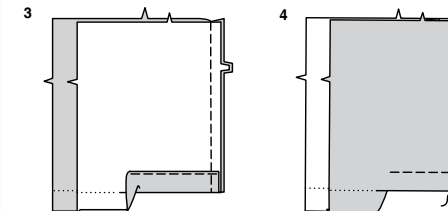
SKIRT B, C

NOTE: View B will be shown unless otherwise indicated.



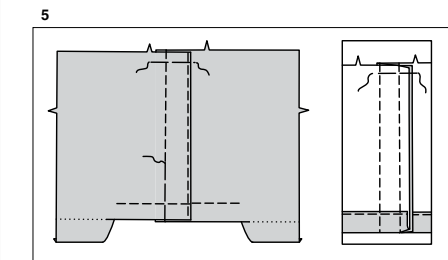
1. Press up hem on lower edge of RIGHT FRONT (10). Press under 1/4" (6mm) on raw edge. Stitch hem in place, close to inner pressed edge, ending approximately 3" (7.5cm) away from side seams.

2. Press up hem on lower edge of LEFT FRONT (11). Press under 1/4" (6mm) on raw edge. Stitch hem in place, close to inner pressed edge, ending approximately 3" (7.5cm) away from side seam.



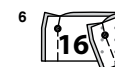
3. With RIGHT sides together, stitch and RIGHT and LEFT front sections together at double notched edge.

4. Press RIGHT front along fold line, **EDGESTITCH** close to pressed edge. Press.

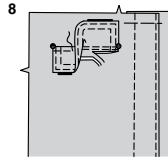
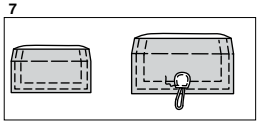


5. Bring pressed edge of RIGHT front over left front, matching centers, forming overlap, as shown. Baste upper edges together. Baste along stitching line catching in stitched seam on INSIDE. On OUTSIDE, **TOPSTITCH** as basted.
TIP: Temporally hand tack RIGHT front overlap at lower edge, keeping it secure while stitching remaining seams.

VIEW C

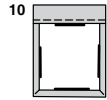
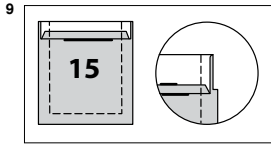


6. Apply INTERFACING to WRONG side of FLAP (16), following manufacturer's directions. With RIGHT sides together, fold flap in half, lengthwise along fold line. Stitch ends, leaving edge with small dots open. Trim seam and corners.



7. Turn flap; press. Machine-baste $5/8$ " (1.5cm) from raw edge. On OUTSIDE, **EDGE**STITCH and **TOP**STITCH finished edges.
OPTIONAL: Pin loop half of toggle closure to RIGHT side of flap, centering over small dot, as shown. Stitch toggle in place.

8. On OUTSIDE, pin flap to front, placing basting along flap line, matching small dots, as shown. Stitch along basting. Trim close to stitching.
Turn flap down; press. **TOP**STITCH close to upper edge.



9. Press under $1/4$ " (6mm) on upper edge of POCKET (15). Turn upper edge to OUTSIDE along fold line, forming facing. Stitch along seam line on raw edges. Trim seam allowance in the facing area to $1/4$ " (6mm).

10. Turn corners RIGHT side out, turning facing to the WRONG side; press, pressing under raw edges along stitching. Stitch facing close to inner edge.

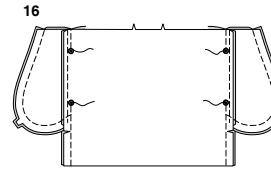
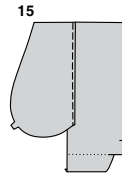
11. Optional- On OUTSIDE, pin pocket to RIGHT front, matching large dots. Temporarily pin in place.
Pin bar half of toggle closure to pocket front, using flap as a placement guide, making sure toggle functions correctly. Remove pocket from front. Stitch toggle in place.

12. On OUTSIDE, pin pocket to RIGHT front matching large dots. **EDGE**STITCH and **TOP**STITCH side and lower edges.

CONTINUE AS FOLLOWS FOR BOTH VIEWS

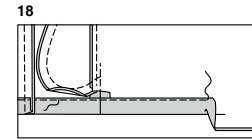
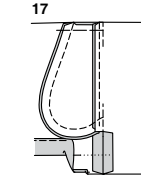
13. Stitch one POCKET (13) section to front at each side in a $1/4$ " (6mm) seam. Press seams toward pockets.

14. Stitch one pocket section to BACK (12) at each side in a $1/4$ " (6mm) seam. Press seams toward pockets, pressing pockets out.



15. **UNDER**STITCH front pocket.

16. Open out front side seams. With raw edges even, stitch front and back together at sides, leaving opening between large dots. Stitch pocket edges together to side seams. Clip back seam allowances below pockets.



17. Turn pockets toward front along seamlines; press.

18. Press up remaining hem on lower edge of back and sides. Press under $1/4$ " (6mm) on raw edge. Stitch close to inner pressed edge, connecting with previous stitching on front.

19. With RIGHT sides together, stitch ends of CASING (14), leaving an opening between small dots, as shown. Back-stitch at small dots to reinforce seam. Press seam toward RIGHT front waistband.

20. Fold casing in half, lengthwise, with WRONG sides together, having raw edges even. Baste raw edges together. The side with the opening is the underside of the casing.

21. With the underside of casing facing you, pin casing to garment matching centers, placing small dots at side seams. Stitch along seam line. Stitch again $1/4$ " (6mm) from first stitching within seam allowance. Trim close to second stitching.

22. Press seam toward garment, pressing casing out.

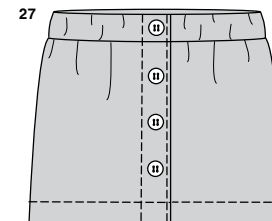
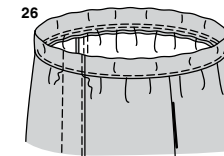
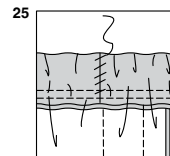
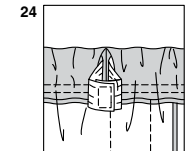
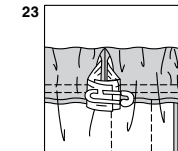
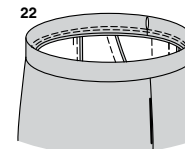
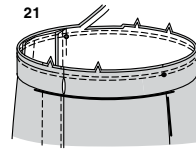
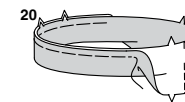
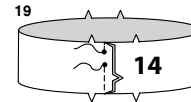
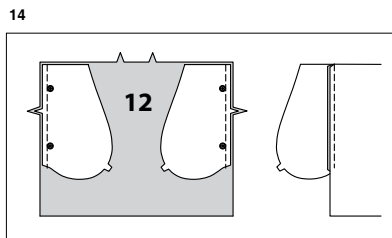
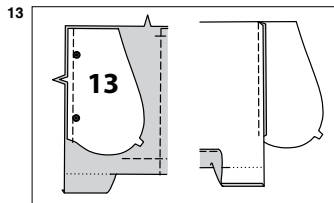
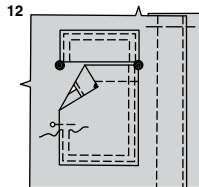
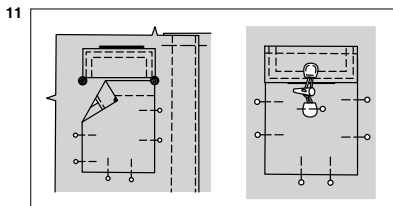
23. Cut a piece of elastic to fit waist, plus 1" (2.5cm). Insert elastic through opening in casing. Overlap ends and hold with a safety pin.
Try on garment and adjust to fit.

24. Stitch ends of elastic together securely.

25. **SLIP**STITCH opening edges of casing together. Distribute fullness evenly.

26. On OUTSIDE, **EDGE**STITCH on RIGHT side of casing seam. Stitch along stitching lines through all thicknesses, stretching elastic while stitching.

27. Hand-sew buttons to center front at markings, through all thicknesses.





Congrats!

You've completed your sewing adventure

**SHARE
YOUR** LOOK



Post your pattern and tag us
[@simplicity_creative_group](#) and [#simplicitypatterns](#)
for a chance to be featured on our social media.

Look for more PDF patterns at [simplicity.com](https://www.simplicity.com)

Have a question or need help with your sewing project call us at
1-888-588-2700



Simplicity ©2024 a division of IG Design Group Americas Inc. • Atlanta, GA 30342 USA www.thedesigngroup.com • All Rights Reserved. www.simplicity.com • Made in the U.S.A. Fabriqué aux États-Unis.

To be used for individual private home use only and not for commercial or manufacturing purposes. • A usage privé seulement et non à des fins commerciales ou de production en série. • Para uso privado solamente, no se puede utilizar con propósitos de comercialización o de producción en serie.