

S3013

**Simplicity**

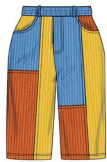
easy-to-sew



A



B



C

Designed and printed in USA.



Easy

Facile

**TODDLERS' HOODED T-SHIRT AND JEANS**

**Suggested Fabrics:** A: Stretch Knits only such as Bamboo Knit, ITY, Modal, Single Knit. See Pick-A-Knit® Rule. B,C: Chambray, Cotton Blends, Lightweight Denim, Lightweight Linen, Pinwale Cord. **Lining B,C:** Cotton Blends, Polyester Blends.

**Notions:** B,C: ¾ yd. of 1" wide elastic.

**Sizes** ½ 1 2 3 4

**BODY MEASUREMENTS:** Select pattern size based on body measurements

**Chest** 19 20 21 22 23 Ins.

**Waist** 19 19½ 20 20½ 21 "

**Hip** 28 31 34 37 40 "

**Approx. Height** 26½ 31 35 38 41 "

**T-Shirt A** 60\*\* ¾ ¾ ¾ ¾ ¾ Yd.

**Jeans B** 45\*\* ¾ ¾ ¾ ¾ 1 1½ Yds.

60\*\* ¾ ¾ ¾ ¾ ¾ "

**Lining B,C** 45\*\* - ¾ yd.

**Jeans C** 45,60\*\* - ½ yd.

**Contrast 1 (Right Side Front, Side Front and Pocket, Left Lower Front, Side Back)**

45, 60\*\*

¾ ¾ ¾ ¾ ¾ Yd.

**Contrast 2 (Right Front, Side Front and Pocket, Left Side Front, Back)**

45, 60\*\*

¾ ¾ ¾ ¾ ¾ Yd.

**FINISHED GARMENT MEASUREMENTS (Includes Design and Wearing Ease)**

**Width, lower edge**

**T-shirt A** 23 24 25 26 27 Ins.

**Width, each leg**

**Jeans B,C** 9 9½ 10 10½ 11 Ins.

**Finished back length from base of neck**

**T-shirt A** 10½ 11 11½ 12 12½ Ins.

**Finished side length from waist**

**Jeans B,C** 16 17½ 19 20½ 22 Ins.

\*with nap \*\*without nap

**T-SHIRT À CAPUCHE ET JEANS POUR PETITS ENFANTS**

**Tissus Conseillés:** A: Tricot extensibles seulement tels que: Tricot de Bambou, Tricot interlock en fil retors, Tricot Modal, Tricot simple. Reportez-vous à la règle Pick-A-Knit®. B,C: Chambray, Cotonnades, Denim léger, Toile de lin fine, Velours Milleraies. **Doublure B,C:** Cotonnades, Mélanges de polyester.

**Merci:** B,C: 0.7m d'élastique de 2.5cm.

**Tailles** ½ 1 2 3 4

**MESURES DU CORPS:** Choisissez la taille du patron basée sur les mesures du corps

**Poitrine** 48 51 53 56 58 cm

**Taille** 48 50 51 52 53 "

**Hanches** 71 79 86 94 102 "

**Taille approx.** 67 79 89 97 104 "

**T-Shirt A** 150cm\* 0.7 0.7 0.8 0.8 0.8 m

**Jean B** 115cm\* 0.8 0.8 0.9 0.9 1.0 m

150cm\* 0.7 0.7 0.7 0.7 0.8 "

**Doublure B,C** 115cm\*\* - 0.3m

**Jean C** 115, 150cm\* - 0.5m

**Contraste 1 (Côté droit devant, Côté droit et poche, Devant gauche inférieur, Côté dos)**

115, 150cm\*

0.6 0.6 0.7 0.7 0.7 m

**Contraste 2 (Devant droit, Côté droit et poche, Côté gauche devant, Dos)**

115, 150cm\*

0.6 0.6 0.7 0.7 0.7 m

**MESURES DES VÊTEMENTS FINI (Motif et aisance de port compris)**

**Largeur à l'ourlet**

**T-shirt A** 58 61 64 66 69 cm

**Largeur, chaque jambe**

**Jean B,C** 23 24 25 27 28 cm

**Longueur finie – dos, votre nuque à l'ourlet**

**T-shirt A** 27 28 29 30 32 cm

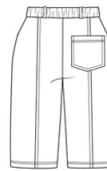
**Longueur finie – côté, taille à l'ourlet**

**Jean B,C** 41 44 48 52 56 cm

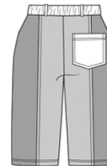
\*avec sens \*\*sans sens



A



B



C

Use the 1 inch (2.54cm) box to ensure you are using rule at 100%

Utilisez la boîte de 2.54 cm pour vous assurer d'utiliser la règle à 100%.

Utilizar un cuadrado de 2.54 cm para asegurarse de estar usando la regla al 100%.

**PICK-A-KNIT® RULE**

**FOR THIS PATTERN - 4" (10 cm) OF KNIT FABRIC MUST STRETCH CROSSWISE FROM HERE**  
**POUR CE PATRON - LE JERSEY DOIT S'ETIRER DANS LA LARGEUR DE 4" (10 cm) DEPUIS ICI**  
**PARA ESTE PATRON - LAS MALLAS DEBEN ESTIRARSE A LO ANCHO POR 4" (10 cm) DESDE AQUI**



**TO HERE 50%  
 JUSTE LA 50%  
 HASTA ALLA 50%**



When using the Pick-A-Knit® rule to measure your fabrics stretch capacity, rule must be viewed or printed at 100%.

Quand vous utilisez la règle Pick-A-Knit® pour mesurer la capacité d'élasticité des tissus, la règle doit être visible ou imprimée à 100%.

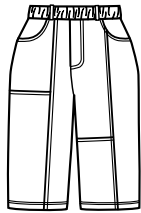
Al utilizar la regla Pick-A-Knit® para medir la capacidad de elasticidad de las telas, la regla debe estar visible o impresa al 100%.

# Simplicity

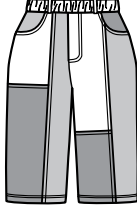
Thank you for purchasing this Simplicity pattern. We made every effort to provide you with a high quality product.



A



B



C



A

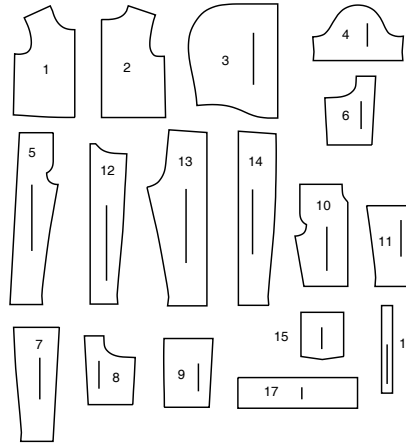


B



C

17 PIECES



- 1 FRONT - A
- 2 BACK - A
- 3 HOOD - A
- 4 SLEEVE - A
- 5 RIGHT FRONT - B,C
- 6 RIGHT UPPER FRONT - B,C
- 7 RIGHT SIDE FRONT - B,C
- 8 POCKET FACING - B,C
- 9 SIDE FRONT AND POCKET - B,C

- 10 LEFT UPPER FRONT - B,C
- 11 LEFT LOWER FRONT - B,C
- 12 LEFT SIDE FRONT - B,C
- 13 BACK - B,C
- 14 SIDE BACK - B,C
- 15 POCKET - B,C
- 16 CARRIER - B,C
- 17 CASING - B,C

## General Directions

### The Pattern

- SYMBOLS**
- GRAIN LINE: Place on straight grain of fabric parallel to selvage
- PLACE SOLID LINE on fold of fabric.
- CENTER FRONT OR BACK of garment.
- NOTCHES
- DOTS
- CUTTING LINE
- LENGTHEN OR SHORTEN LINES

SEAM ALLOWANCE: 5/8" (1.5cm) unless otherwise stated is included but not printed on MULTI-SIZE PATTERNS. Mark your size with colored felt tip pen. See chart on tissue for how to use MULTI-SIZE PATTERNS.

**ADJUST IF NEEDED**  
Make adjustments before placing pattern on fabric.

**TO LENGTHEN:**  
Cut pattern between lengthen or shorten lines. Spread pattern evenly, the amount needed and tape to paper.



**TO SHORTEN:**  
At lengthen or shorten lines, make an even pleat taking up amount needed. Tape in place.

When lengthen or shorten lines are not given, make adjustments at lower edge of pattern.

### Cutting/Marking

**BEFORE CUTTING:**  
PRESS pattern pieces with a warm dry iron. PRE-SHRINK fabric by pre-washing washables or steam-pressing non-washables.

CIRCLE your cutting layout.

PIN pattern to fabric as shown in Cutting Layouts.

• FOR DOUBLE THICKNESS: Fold fabric with RIGHT sides together.

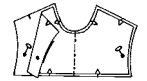
• FOR SINGLE THICKNESS: Place fabric RIGHT side up.

• FOR PILE, SHADED OR ONE WAY DESIGN FABRICS: Use "with nap" layouts

**AFTER CUTTING:**  
Transfer markings to WRONG side of fabric before removing pattern. Use pin and chalk method or dressmaker's tracing paper and wheel.

**To Quick Mark:**

- Snip edge of fabric to mark notches, ends of fold lines and center lines.
- Pin mark dots.



### Sewing

- SEW garment following **Sewing Directions**.
- PIN or machine-baste seams matching notches.
- STITCH 5/8" (1.5 cm) seams unless otherwise stated.
- PRESS seams open unless otherwise indicated clipping when necessary so seams will lie flat.
- TRIM seams to reduce bulk, as shown below.



Trim enclosed seams into layers



Trim corners



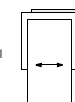
Clip inner curves



Notch outer curves

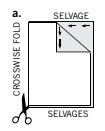
### SPECIAL CUTTING NOTES

★ If layout shows a piece extending past fold, cut out all pieces except piece that extends.

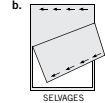


Open out fabric to single thickness. Cut extending piece on RIGHT side of fabric in position shown.

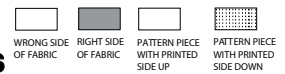
✳ Mark small arrows along both selvages indicating direction of nap or design. Fold fabric crosswise with RIGHT sides together, and cut along fold (a).



Turn one fabric layer around so arrows on both layers go in the same direction. Place RIGHT sides together (b).



## Cutting Layouts

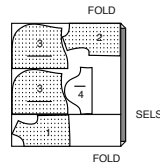


POSITION OF PATTERN PIECES MAY VARY SLIGHTLY ACCORDING TO YOUR PATTERN SIZE

### T-SHIRT A - SIZED FOR STRETCH KNITS ONLY

USE PIECES 1 2 3 4

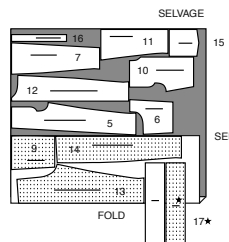
60" (150CM) WITH NAP ALL SIZES



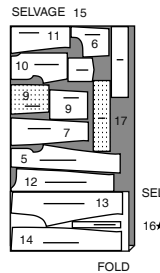
### JEANS B

USE PIECES 5 6 7 9 10 11 12 13 14 15 16 17

45" (115CM) WITH NAP ALL SIZES



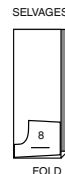
60" (150CM) WITH NAP ALL SIZES



### LINING B, C

USE PIECE 8

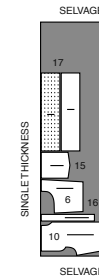
45" (115CM) WITH NAP ALL SIZES



### JEANS C

USE PIECES 6 10 15 16 17

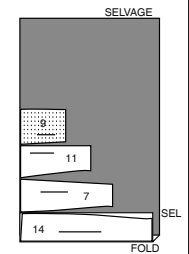
45" (115CM) WITH NAP ALL SIZES



### CONTRAST 1 RIGHT SIDE FRONT, SIDE FRONT AND POCKET, LEFT LOWER FRONT, SIDE BACK)

USE PIECES 7 9 11 14

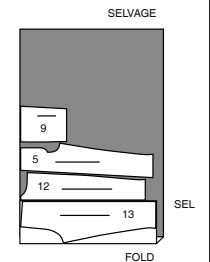
45" 60" (115, 150CM) WITH NAP ALL SIZES



### CONTRAST 2 (RIGHT FRONT, FRONT AND POCKET, LEFT SIDE FRONT, BACK)

USE PIECES 5 9 12 13

45" 60" (115, 150CM) WITH NAP ALL SIZES



## SEWING TUTORIALS



Build your skills viewing short, easy-to-follow videos at [simplicity.com/sewingtutorials](https://simplicity.com/sewingtutorials)

## Sewing Directions

FABRIC KEY RIGHT SIDE WRONG SIDE INTERFACING LINING LINING

Read **General Directions** on page 1 before you begin.

Sewing methods in **BOLD TYPE** have Sewing Tutorial Video available. Scan **QR CODE** to watch videos:

**SLEEVE** – See **Armholes/Sleeves**: “sewing a set in sleeve” video.

**BELT LOOP/CARRIER** – See **Loops and Straps**: “how to sew belt loops” video.

**EDGESTITCH** - See **Machine Stitches**: “how to edgestitch” video.

**STAYSTITCH** - See **Machine Stitches**: “how to do stay-stitching” video.

**TOPSTITCH** - See **Machine Stitches**: “how to topstitch” video.

**SLIPSTITCH** - Slide needle through a folded edge, then pick up a thread of underneath fabric.

**PATTERN PIECES WILL BE IDENTIFIED BY NUMBERS THE FIRST TIME THEY ARE USED. STITCH SEAMS WITH RIGHT SIDES TOGETHER UNLESS OTHERWISE STATED.**

**NOTE:** Under each sub-heading, the first view will be illustrated, unless otherwise illustrated.

## T-SHIRT A

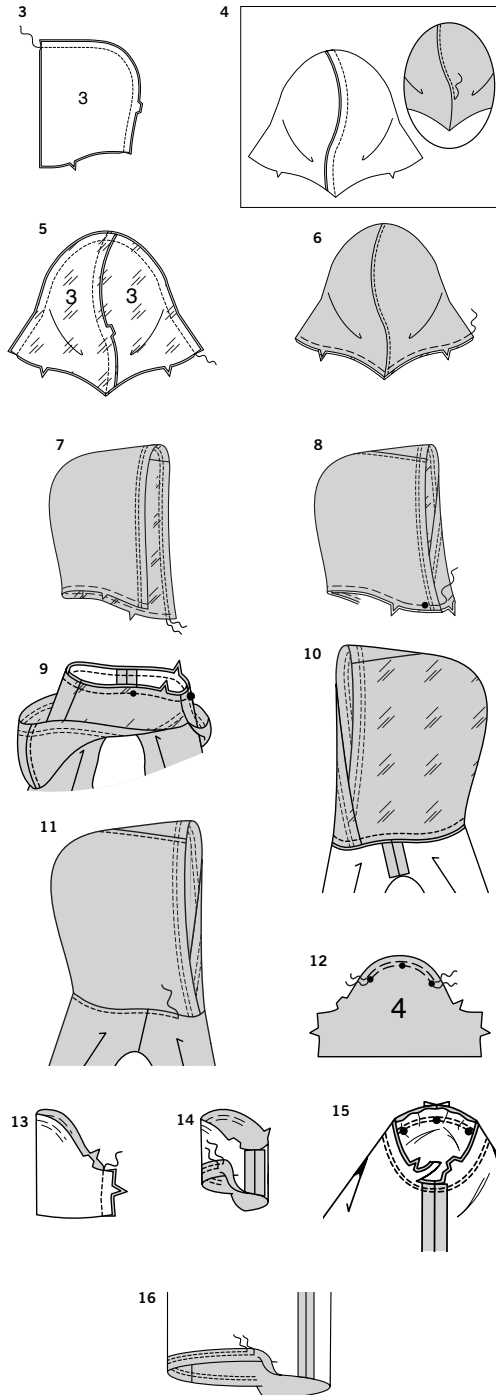
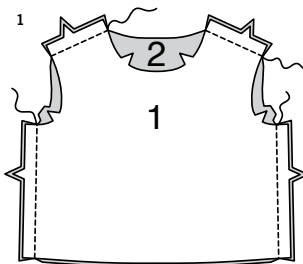
## SIMPLY THE BEST TECHNIQUES FOR SEWING... FOR KNITS

- Use a ball point or stretch needle.
- Stretch knits need seams that are supple enough to “give” with the fabric. you can sew them with straight stitches (stretching the fabric slightly as you sew), narrow zig-zag stitches or one of the stretch stitches built into many conventional machines, or on your serger.
- Some knits require very little or no pressing while sewing. use the appropriate temperature setting. press lightly or use steam.
- To prevent shoulder seams from stretching, pin center of hem tape, clear elastic, or twill tape along seam line on front shoulder edges, then stitch the shoulder seams.
- Raw edges of hem and facings are left raw, unless using a serger.
- Use a twin sewing machine needle for a double stitched hem.

## FRONT AND BACK

**1.** Pin FRONT (1) to BACK (2) at shoulders and sides; stitch.

**2.** **STAYSTITCH** neck edge of t-shirt in direction of arrows.



## HOOD

- Pin two HOOD (3) sections, **RIGHT** sides together. Stitch center back seam. (Remaining hood sections will be used as lining.)
- Press seams toward right side. Topstitch right side of hood 1/4" (6mm) from seam.
- Pin hood **LINING** (3) sections, **RIGHT** sides together. Stitch center back seam. Press seams toward right side. Pin lining to hood, **RIGHT** sides together, matching seams. Stitch front edges; trim seams.
- Turn lining to inside; press. Baste raw edges together.
- TOPSTITCH** 1/2" (1.3cm) and 3/4" (3.2cm) from finished edge of hood.
- Lap right front edge of hood over left, matching large dots, having raw edges even. Baste.
- With **RIGHT** sides together, pin hood to t-shirt, matching center backs, large dots and small dots to shoulder seams, clipping neck edge of t-shirt where necessary. Stitch in 3/8" (1cm) seam.
- Press seams toward t-shirt, turning hood out.

**11.** **TOPSTITCH** t-shirt 1/4" (6mm) from neck seam.

## SLEEVE

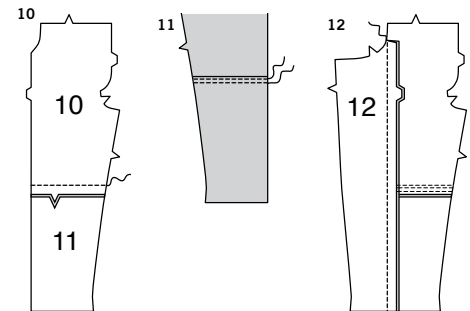
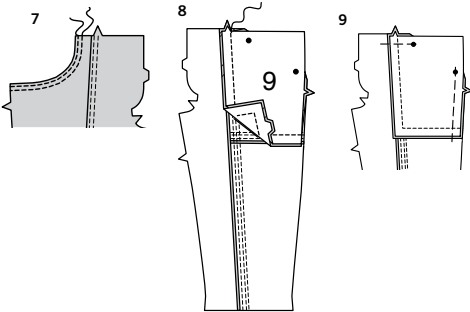
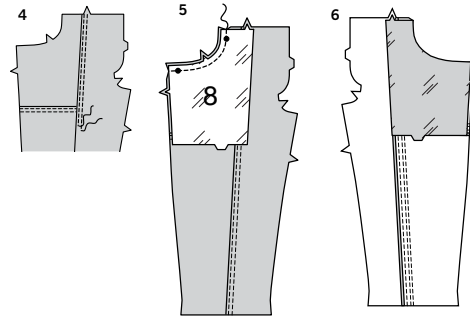
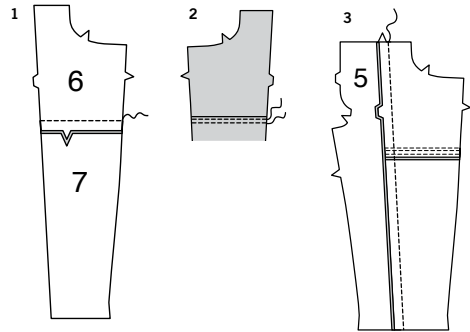
- EASESTITCH** cap of SLEEVE (4) between outer dots.
- Stitch sleeve seam.
- Press up 1" (2.5cm) hem on lower edge of sleeve. Stitch 1/4" (6mm) from raw edge and 1/4" (6mm) below first stitching.
- With **RIGHT** sides together, pin sleeve into armhole with center small dot at shoulder seam, matching underarm seams, notches and remaining small dots. Adjust ease; baste. Stitch. Stitch again 1/8" (3mm) away in seam allowance. Trim close to second stitching. Turn seams toward sleeve.

## HEM

- Press up 1" (2.5cm) hem on lower edge of t-shirt. Stitch 1/4" (6mm) from raw edge and 1/4" (6mm) below first stitching.

## S3013

3 of 4



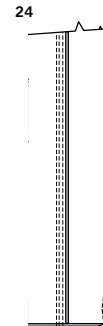
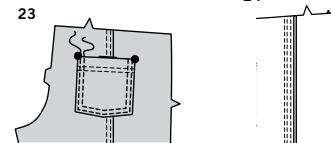
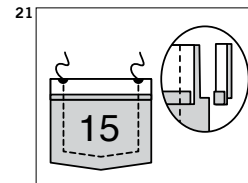
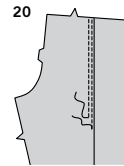
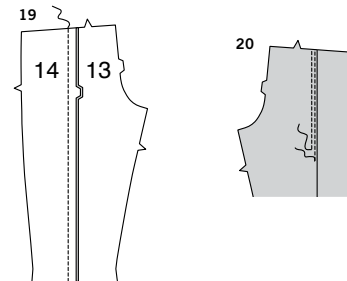
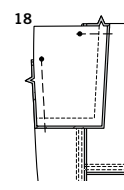
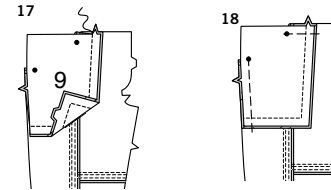
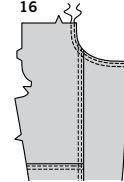
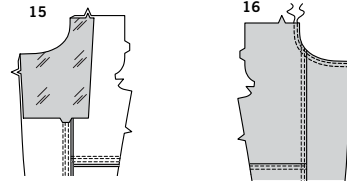
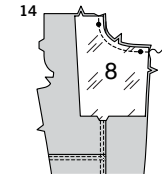
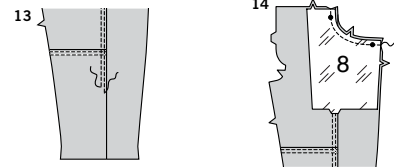
## JEANS B, C

## RIGHT FRONT

- With RIGHT sides together, pin RIGHT UPPER FRONT (6) to RIGHT SIDE FRONT (7), matching notches. Stitch; press seams toward lower edge.
- EDGESTITCH** right side front along seam. Stitch again 1/4"(6mm) below first stitching.
- Pin RIGHT FRONT (5) to side front, matching notches; stitch. Press seams toward center front.
- EDGESTITCH** right front along seam. Stitch again 1/4"(6mm) away.
- With RIGHT sides together, pin right POCKET FACING (8) to right upper front, matching notches and dots. Stitch curved edge in 3/8"(1cm) seam; trim seam. (Save remaining pocket facing.)
- Turn facing to INSIDE; press.
- EDGESTITCH** right upper front along seam. Stitch again 1/4"(6mm) below first stitching.
- With RIGHT sides together, pin right SIDE FRONT AND POCKET (9) section to pocket facing, matching notches and dots, having raw edges even. Stitch front and lower edge, matching double notches, keeping garment free. Press seamed edges together. (Save remaining side front and pocket.)
- Baste across upper and side edges, matching dots and seams, having raw edges even.

## LEFT FRONT

- With RIGHT sides together, pin LEFT UPPER FRONT (10) to LEFT LOWER FRONT (11), matching notches. Stitch; press seams toward lower edge.
- EDGESTITCH** left lower front along seam. Stitch again 1/4"(6mm) below first stitching.
- Pin LEFT SIDE FRONT (12) to left front, matching notches; stitch. Press seams toward center front.



**13. EDGESTITCH** left front along seam. Stitch again 1/4"(6mm) away.

**14.** With RIGHT sides together, pin left pocket FACING (8) to left upper front, matching notches and dots. Stitch curved edge in 3/8"(1cm) seam; trim seam.

**15.** Turn facing to INSIDE; press.

**16. EDGESTITCH** left upper front along seam. Stitch again 1/4"(6mm) below first stitching.

**17.** With RIGHT sides together, pin left side front and pocket (9) section to left pocket facing, matching notches and dots, having raw edges even. Stitch front and lower edge, matching double notches, keeping garment free. Press seamed edges together.

**18.** Baste across upper and side edges, matching dots and seams having raw edges even.

## BACK

**19.** With RIGHT sides together, pin SIDE BACK (14) to BACK (13) at side back seam, matching notches; stitch. Press seams toward center back.

**20. EDGESTITCH** back along side back seam. Stitch again 1/4"(6mm) away.

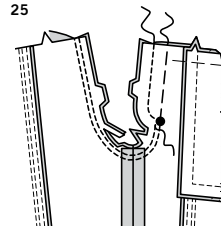
**21.** Press under 1/4"(6mm) on upper edge of POCKET (15). Turn upper edge to OUTSIDE along foldline, forming facing. Stitch along seam line on raw edges. Trim seam allowance in the facing area to 1/4"(6mm).

**22.** Turn corners RIGHT side out, turning facing to the WRONG side; press, pressing under raw edges along stitching, folding in corners. Stitch facing close to inner edge. Stitch again 1/4"(6mm) above first stitching.

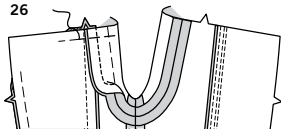
**23.** On OUTSIDE, pin pocket to right back, matching large dots. Stitch close to sides and lower edge and 1/4"(6mm) away.

## REMAINING SEAMS

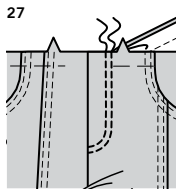
**24.** Stitch back to front together at inner leg edge.



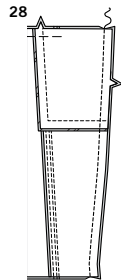
- 25.** Stitch crotch seam and extension edges together, pivoting at large dot. Baste along center front above large dot. Stitch crotch seam again 1/4"(6mm) away in seam allowance below extension. Trim close to second stitching.



- 26.** Turn extension toward left front along foldline; press. Baste across upper edge.



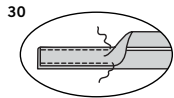
- 27.** On outside, stitch left front along stitching line and 1/4"(6mm) away, through all thicknesses, keeping pockets free.



- 28.** With RIGHT sides together, stitch back to front at sides.



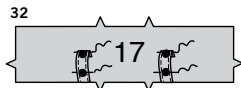
- 29.** Fold CARRIER (16) in half, lengthwise with WRONG sides together. Press, setting in a crease. Open out long edges of carrier and turn them to WRONG side so that they meet at the crease. Press.



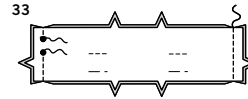
- 30.** Fold carrier in half lengthwise, bringing pressed edges together. Stitch close to both long edges.



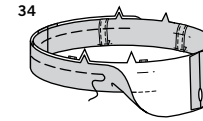
- 31.** Cut carriers into four sections, each 2-1/2"(6.3cm) long. Turn in 5/8"(1.5cm) on one end of each carrier; press.



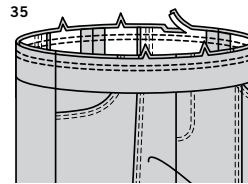
- 32.** On outside, pin remaining end of carriers to each CASING (17) section, RIGHT side up, centering over lower large dots, having raw edges even; baste. Pin pressed edge of carriers to casing, centering over upper large dots. **EDGESTITCH** pressed edges.



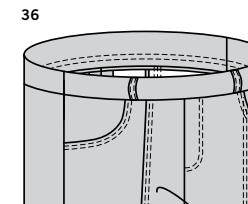
- 33.** Pin casing sections, RIGHT sides together, matching small dots. Stitch side seams, leaving an opening between small dots, as shown. Back-stitch at small dots to reinforce seam. Press seams open.



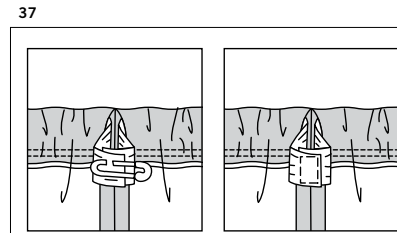
- 34.** Fold casing in half lengthwise, WRONG sides together, having raw edges even. Baste raw edges together. The side with the opening is the underside of the casing.



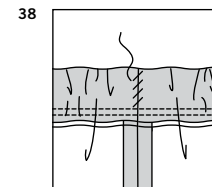
- 35.** With the underside of casing facing you, pin casing to pants, matching centers and side seams. Stitch. Stitch again 1/4" (6mm) from first stitching within seam allowance. Trim close to second stitching.



- 36.** Press seam toward pants, pressing casing up.

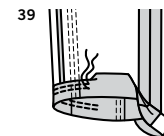


- 37.** Cut a piece of elastic to fit waist, plus 1"(2.5cm). Insert elastic through opening in casing. Overlap ends and hold with safety pins. Try on pants and adjust to fit. Stitch ends of elastic together securely.



- 38.** **SLIPSTITCH** opening edges of casing together. **TIP**-To secure elastic so it won't twist in wearing, stitch through all thicknesses of casing in the groove of each seam.

## HEMS



- 39.** Turn up a 1"(2.5cm) hem on lower edge of pants. Press under 1/4"(6mm) on raw edge. Stitch close to inner pressed edge. Stitch again 1/4"(6mm) below first stitching.



# Congrats!

You've completed your sewing adventure

---

**SHARE  
YOUR** LOOK



Post your pattern and tag us  
[@simplicity\\_creative\\_group](#) and [#simplicitypatterns](#)  
for a chance to be featured on our social media.

Look for more PDF patterns at [simplicity.com](http://simplicity.com)

Have a question or need help with your sewing project call us at  
1-888-588-2700



Simplicity ©2024 a division of IG Design Group Americas Inc. • Atlanta, GA 30342 USA [www.thedesigngroup.com](http://www.thedesigngroup.com) • All Rights Reserved. [www.simplicity.com](http://www.simplicity.com) • Made in the U.S.A. Fabriqué aux États-Unis.

To be used for individual private home use only and not for commercial or manufacturing purposes. • A usage privé seulement et non à des fins commerciales ou de production en série. • Para uso privado solamente, no se puede utilizar con propósitos de comercialización o de producción en serie.