

S3011

**mi g** A DIY & LIFESTYLE BRAND


Scan QR code for a Sew-Along tutorial by sewing celebrity Mimi G.

**Simplicity**

Designed and printed in USA.

Average

**MISSES' AND WOMEN'S JUMPSUIT**

**Suggested Fabrics:** Stretch Knits only such as Jersey, Ponte, Scuba, Sweatshirt Fleece. See Pick-A-Knit® Rule.

**Notions:** One 28" (71cm) medium-weight (#3) zipper (adjust to fit) for both Misses and Women, 3½ yds. (3.6m) of ¾" (1cm) elastic.

Sizes	10	12	14	16	18	20W	22W	24W	26W	28W
European	36	38	40	42	44	46	48	50	52	54

**BODY MEASUREMENTS: Select pattern size based on body measurements**

Bust	32½	34	36	38	40	42	44	46	48	50	Ins.
Waist	25	26½	28	30	32	35	37	39	41½	44	"
Hip-9" below waist	34½	36	38	40	42	44	46	48	50	52	"
Back-neck to waist	16	16½	16½	16½	17	17½	17½	17½	17½	17¾	"

**Jumpsuit**

60"\* 3% 3% 3% 3% 3% 4 4% 4% 4% 4% 4% Yds.

**Interfacing**

20" - ¾ yd.

**FINISHED GARMENT MEASUREMENTS (Includes Design and Wearing Ease)**

Bust	39	40½	42½	44½	46½	51½	53½	55½	57½	59½	Ins.
Hip	38	39½	41½	43½	45½	47½	49½	51½	53½	55½	"
Width, each leg											
Jumpsuit	24	24½	25½	26½	27½	25½	26½	27½	28½	29½	Ins.
Finished back length from base of neck											
Jumpsuit	57	57½	58	58½	59	58½	59	59½	60	60½	Ins.

\*with nap \*\*without nap

Moins Facile

**COMBINAISON POUR JEUNES FEMMES ET FEMMES**

**Tissus Conseillés:** Tricot extensibles seulement tels que Jersey, Ponte, Scuba, Jersey molletonné pour sweat-shirt. Reportez-vous à la règle Pick-A-Knit®.

**Mercerie:** 1 fermeture à glissière de poids moyen (#3) de 71cm (adaptez pour ajuster) pour jeunes femmes et femmes, 3.6m d'élastique de 1cm.

Tailles	10	12	14	16	18	20W	22W	24W	26W	28W
Françaises	38	40	42	44	46	48	50	52	54	56
Européen	36	38	40	42	44	46	48	50	52	54

**MESURES DU CORPS: Choisissez la taille du patron basée sur les mesures du corps**

Poitrine	83	87	92	97	102	107	112	117	122	127	cm
Taille	64	67	71	76	81	89	94	99	105	112	"
Hanches (23cm au-dessous de la taille)	88	92	97	102	107	112	117	122	127	132	cm
Dos du cou à la taille	40.5	41.5	42	42.5	43	44	44	44.5	45	45	"

**Combinaison**

150cm\* 3.1 3.2 3.2 3.3 3.4 3.7 3.8 3.8 3.9 3.9 m

**Entoilage**

51cm - 0.7m

**MESURES DES VÊTEMENTS FINI (Motif et aisance de port compris)**

Poitrine	99	103	108	113	118	131	136	141	146	151	cm
Hanches	97	100	105	110	116	121	126	131	136	141	"
Largeur, chaque jambe											
Combinaison	61	63	65	68	70	65	67	70	72	75	cm
Longueur finie – dos, votre nuque à l'ourlet											
Combinaison	145	146	147	149	150	149	150	151	152	154	cm

\*avec sens \*\*sans sens



A

Use the 1 inch (2.54cm) box to ensure you are using rule at 100%

Utilisez la boîte de 2.54 cm pour vous assurer d'utiliser la règle à 100%.

Utilizar un cuadrado de 2.54 cm para asegurarse de estar usando la regla al 100%.

**PICK-A-KNIT® RULE**

FOR THIS PATTERN - 4" (10 cm) OF KNIT FABRIC MUST STRETCH CROSSWISE FROM HERE  
POUR CE PATRON - LE JERSEY DOIT S'ÉTIRER DANS LA LARGEUR DE 4" (10 cm) DEPUIS ICI  
PARA ESTE PATRON - LAS MALLAS DEBEN ESTIRARSE A LO ANCHO POR 4" (10 cm) DESDE AQUI



TO HERE 35%  
JUSQUE LA 35%  
HASTA ALLA 35%



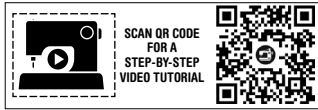
When using the Pick-A-Knit® rule to measure your fabrics stretch capacity, rule must be viewed or printed at 100%.

Quand vous utilisez la règle Pick-A-Knit® pour mesurer la capacité d'élasticité des tissus, la règle doit être visible ou imprimée à 100%.

Al utilizar la regla Pick-A-Knit® para medir la capacidad de elasticidad de las telas, la regla debe estar visible o impresa al 100%.

# Simplicity®

Thank you for purchasing this Simplicity pattern.  
We made every effort to provide you with a high quality product.



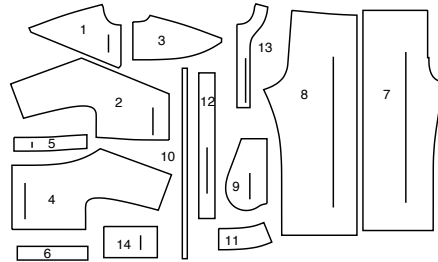
A



A

**mi g** A DIY & LIFESTYLE BRAND

14 PIECES



- 1 Yoke Front
- 2 Bodice Front
- 3 Yoke Back
- 4 Bodice Back
- 5 Front Casing
- 6 Back Casing
- 7 Front
- 8 Back
- 9 Pocket
- 10 Guide for Elastic
- 11 Collar
- 12 Underlap
- 13 Front Facing
- 14 Sleeve Band



www.simplicity.com



info@simplicity.com



1-888-588-2700

## General Directions

### The Pattern

- SYMBOLS**
- ↔ GRAIN LINE Place on straight grain of fabric parallel to selvage
  - PLACE SOLID LINE on fold of fabric.
  - - - CENTER FRONT OR BACK of garment.
  - ▽ NOTCHES
  - DOTS
  - CUTTING LINE
  - == LENGTHEN OR SHORTEN LINES

SEAM ALLOWANCE: 5/8" (1.5cm) unless otherwise stated is included but not printed on MULTI-SIZE PATTERNS. Mark your size with colored felt tip pen. See chart on tissue for how to use MULTI-SIZE PATTERNS.

**ADJUST IF NEEDED**  
Make adjustments before placing pattern on fabric.

**TO LENGTHEN:**  
Cut pattern between lengthen or shorten lines. Spread pattern evenly, the amount needed and tape to paper.

**TO SHORTEN:**  
At lengthen or shorten lines, make an even pleat taking up amount needed. Tape in place.

When lengthen or shorten lines are not given, make adjustments at lower edge of pattern.

### Cutting/Marking

#### BEFORE CUTTING:

PRESS pattern pieces with a warm dry iron. PRE-SHRINK fabric by pre-washing washables or steam-pressing non-washables.

CIRCLE your cutting layout.

PIN pattern to fabric as shown in Cutting Layouts.

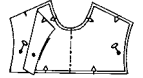
- FOR DOUBLE THICKNESS: Fold fabric with RIGHT sides together.
- FOR SINGLE THICKNESS: Place fabric RIGHT side up.
- FOR PILE, SHADED OR ONE WAY DESIGN FABRICS: Use "with nap" layouts

#### AFTER CUTTING:

Transfer markings to WRONG side of fabric before removing pattern. Use pin and chalk method or dressmaker's tracing paper and wheel.

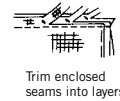
#### To Quick Mark:

- Snip edge of fabric to mark notches, ends of fold lines and center lines.
- Pin mark dots.



### Sewing

- SEW garment following **Sewing Directions**.
- PIN or machine-baste seams matching notches.
- STITCH 5/8" (1.5 cm) seams unless otherwise stated.
- PRESS seams open unless otherwise indicated clipping when necessary so seams will lie flat.
- TRIM seams to reduce bulk, as shown below.



Trim enclosed seams into layers



Trim corners



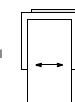
Clip inner curves



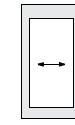
Notch outer curves

### SPECIAL CUTTING NOTES

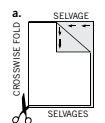
★ If layout shows a piece extending past fold, cut out all pieces except piece that extends.



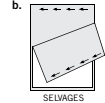
Open out fabric to single thickness. Cut extending piece on RIGHT side of fabric in position shown.



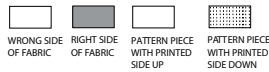
✱ Mark small arrows along both selvages indicating direction of nap or design. Fold fabric crosswise with RIGHT sides together, and cut along fold (a).



Turn one fabric layer around so arrows on both layers go in the same direction. Place RIGHT sides together (b).



## Cutting Layouts

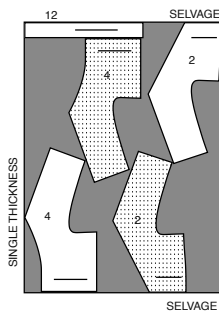
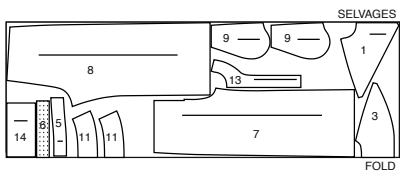


POSITION OF PATTERN PIECES MAY VARY SLIGHTLY ACCORDING TO YOUR PATTERN SIZE

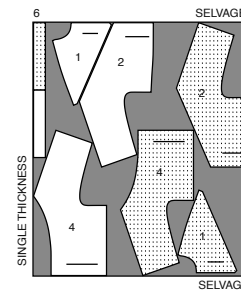
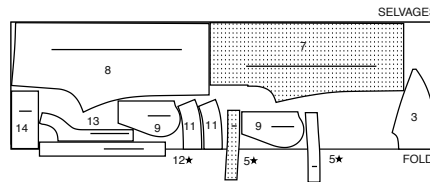
### JUMPSUIT

USE PIECES 1 2 3 4 5 6 7 8 9 11 12 13 14

60" (150CM)  
WITH NAP  
SIZES 10 12 14 16 18



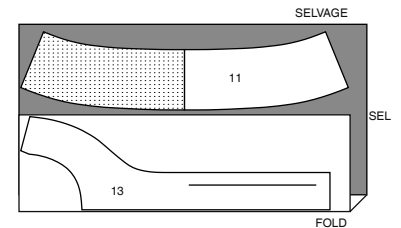
60" (150CM)  
WITH NAP  
SIZES 20W 22W 24W 26W 28W



### INTERFACING

USE PIECE 11 13

20" (51CM)  
ALL SIZES



## Sewing Directions

FABRIC KEY	RIGHT SIDE	WRONG SIDE	INTERFACING	LINING	LINING
------------	------------	------------	-------------	--------	--------

Read **General Directions** on page 1 before you begin.

Sewing terms appearing in **BOLD TYPE** in Sewing Instructions are explained below.

**EDGESTITCH** - Stitch close to finished edge or seam. **FINISH** - Stitch 1/4" (6mm) from raw edge and finish with one of the following: (1) Pink OR (2) Overcast OR (3) Turn in along stitching and stitch close to fold OR (4) Overlock.

**EDGESTITCH** - Stitch close to finished edge or seam. **FINISH** - Stitch 1/4" (6mm) from raw edge and finish with one of the following: (1) Pink OR (2) Overcast OR (3) Turn in along stitching and stitch close to fold OR (4) Overlock.

**FINISH** - Stitch 1/4" (6mm) from raw edge and finish with one of the following: (1) Pink OR (2) Overcast OR (3) Turn in along stitching and stitch close to fold OR (4) Overlock. **OPTIONAL FOR HEMS:** Apply Seam Binding.

**GATHER** - Stitch along seamline and again 1/4" (6mm) away in seam allowance, using long machine stitches. Pull thread ends when adjusting to fit.

**INTERFACING** - Pin interfacing to **WRONG** side of fabric. Fuse interfacing in place following manufacturer's directions.

**REINFORCE** - Stitch along seamline where indicated in sewing instructions, using small machine stitches.

**SLIPSTITCH** - Slide needle through a folded edge, then pick up a thread of underneath fabric.

**STAYSTITCH** - Stitch 1/8" (3mm) from seamline in seam allowance (usually 1/2" (13mm) from raw edge).

**TOPSTITCH** - On outside, stitch 1/4" (6mm) from edge, seam or previous stitching, using presser foot as guide, or stitch where indicated in instructions.

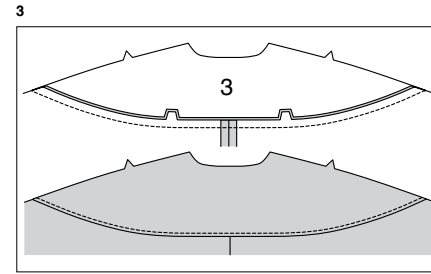
**UNDERSTITCH** - Open out facing or underside of garment; stitch to seam allowance close to seam.

## JUMPSUIT

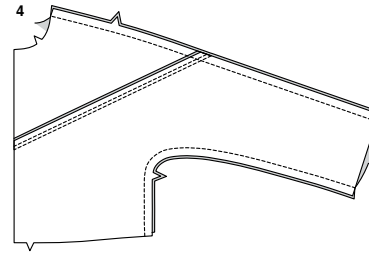
### BODICE FRONT AND BACK

1. With **RIGHT** sides together, stitch **YOKE FRONT** (1) to **BODICE FRONT** (2) matching notches. Press seam up.  
On **OUTSIDE**, **TOPSTITCH** yoke, catching in seam on **INSIDE**.

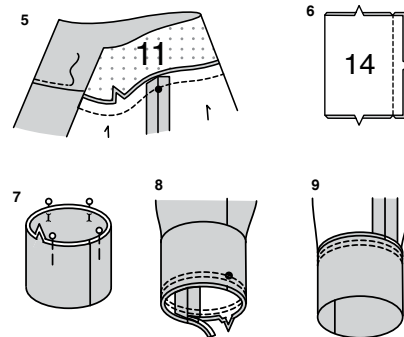
2. With **RIGHT** sides together, stitch center back seam of **BODICE BACK** (4) sections.



3. With **RIGHT** sides together, pin **YOKE BACK** (3) to upper edge of back matching notches. Baste. Stitch. Press seam up.  
On **OUTSIDE**, **TOPSTITCH** yoke, catching in seam on **INSIDE**.



4. With **RIGHT** sides together, stitch front to back at shoulders and sides.



5. Apply **INTERFACING** to **WRONG** side of **COLLAR** (11). With **RIGHT** sides together, pin collar to neck edge, placing small dots at shoulder seams. Baste. Stitch. Press seam up, pressing collar out.  
On **OUTSIDE**, **TOPSTITCH** collar, catching in pressed seam on **INSIDE**. Remaining collar section will be used later as facing.

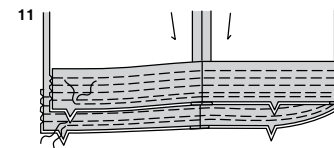
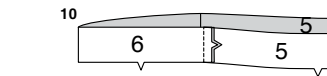
6. With **RIGHT** sides together, stitch short ends of **SLEEVE BAND** (14).

7. Fold sleeve band in half, with **WRONG** sides together and raw edges even; press. Pin.

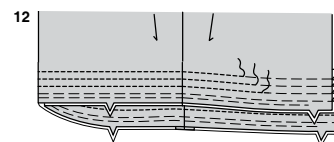
8. On **OUTSIDE**, pin band to lower edge of sleeve, matching seams and having raw edges even. Stitch, stretching band to fit. Stitch again 1/4" (6mm) from first stitching within the seam allowance. Trim close to second stitching.

9. Press seam toward sleeve, pressing band out.

10. With **RIGHT** sides together, stitch **FRONT CASING** (5) sections to **BACK CASING** (6) at sides. Trim seam.

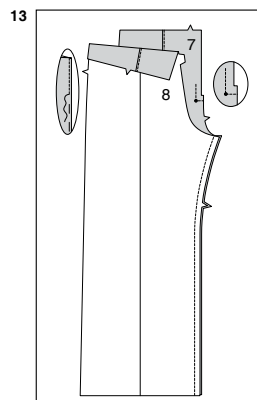


11. On **INSIDE**, pin **WRONG** side of casing to lower edge of bodice having raw edges even, matching notches. Baste along stitching lines, as shown.  
**GATHER** lower edge of bodice between front notches.

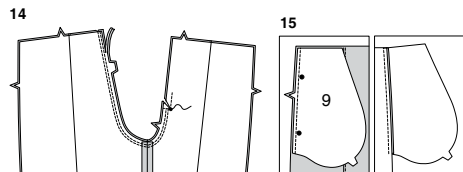


12. On **OUTSIDE**, **TOPSTITCH** as basted, along stitching lines, forming three separate casings.

## PANTS FRONT AND BACK

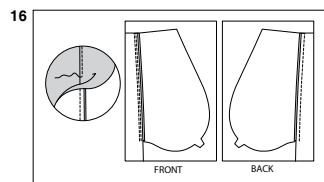


- 13.** To form stitched crease in FRONT (7) and BACK (8), fold along fold line. **EDGE STITCH** close to pressed edge, forming tuck. **REINFORCE** front sections on each side of small dot. Stitch front and back together at inner leg seam.

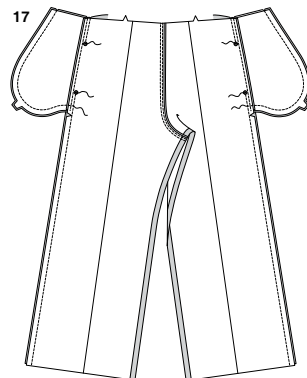


- 14.** Stitch crotch seam ending at small dot on front. Stitch again 1/4" (6mm) away in seam allowance along curve as shown. Trim close to second stitching. Clip front to small dot being careful not to clip through stitching.

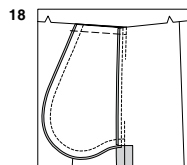
- 15.** Stitch one POCKET (9) section to front and back at each side in a 1/4" (6mm) seam. Press seams toward pockets.



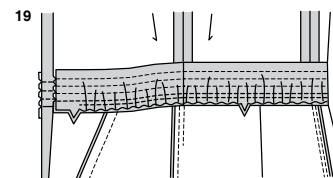
- 16.** UNDERSTITCH front pocket.



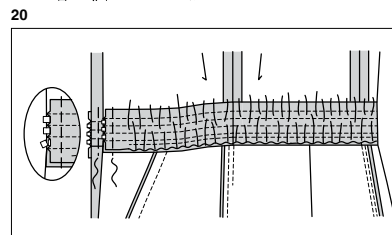
- 17.** Stitch front and back together at sides, leaving open between large dots. Stitch pocket edges together to side seams. Clip back seam allowances below pockets.



- 18.** Turn pockets toward front along seamlines; press. Baste upper edge in place.



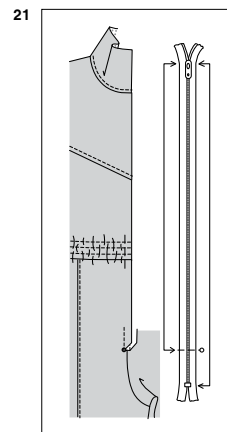
- 19.** With RIGHT sides together, pin bodice to upper edge of pants matching notches and side seams. Adjust gathers to fit. Baste. Stitch. Press seam down.



- 20.** Cut three pieces of elastic each the measurement of GUIDE FOR ELASTIC (10). Attach a safety pin to one end of each elastic. Insert elastic through opening in each casing, having ends extend 5/8" (1.5cm) beyond opening edges. Stitch across ends of elastic. Trim away elastic close to stitching.  
**TIP:** Work elastic through all rows at same time. This eliminates that tug-of-war that you always have when trying to pull that last piece of elastic through an already bunched up casing.

## ZIPPER

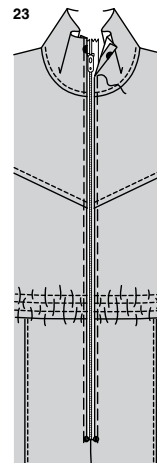
**NOTE:** *Stitch zipper using an adjustable zipper foot.*



- 21.** It will be necessary to adjust the length of your zipper. Measure the opening of garment from small dot to seam line at upper edge, less 1/4" (6mm). Close the zipper and measure from the upper stop down along the teeth to the length needed. Mark new length.



- 22.** With matching buttonhole twist or heavy-duty thread, make several overcast stitches across zipper teeth. Trim away lower end of zipper tape to within 5/8" (1.5cm) of overcast stitches.



- 23.** Press under 5/8" (1.5cm) on front opening edges above small dot. Pin closed zipper under front opening edges with top stop 1/4" (6mm) below seamline at upper edge of collar, exposing 1/4" (6mm) of zipper tape. Baste close to pressed edge, using an adjustable zipper foot.



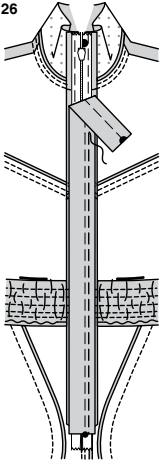
- 24.** Fold UNDERLAP (12) in half lengthwise, with RIGHT sides together. Stitch ends. Trim seam.

25

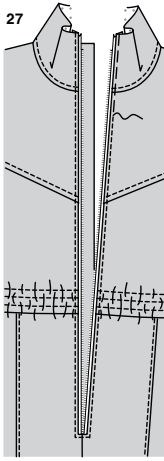


**25.** Turn underlap RIGHT side out. Press. Baste raw edges together. **FINISH** raw edge if you prefer.

26



27

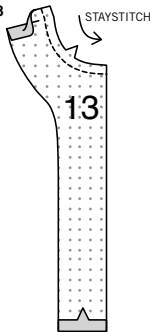


**26.** On INSIDE, pin underlap to RIGHT side of front (over zipper), having raw edges even. Baste.

**27.** On OUTSIDE, **TOPSTITCH** front opening along zipper basting, squaring stitching below opening, keeping pressed edge of underlap free. Remove underlap basting.

#### COLLAR AND FRONT FACING

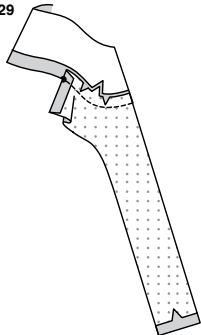
28



13

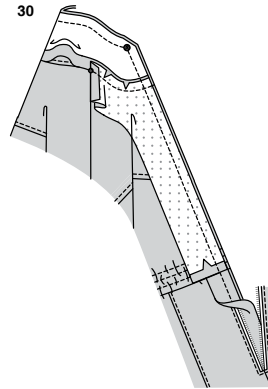
**28.** Apply **INTERFACING** to WRONG side of FRONT FACING (13). **STAYSTITCH** 1/2" (1.3cm) from neck edge of facing, in direction of arrows. Press under 5/8" (1.5cm) on shoulder seams and lower edge of facing.

29



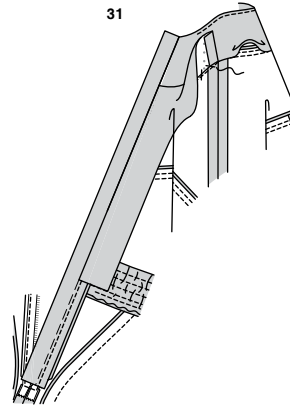
**29.** With RIGHT sides together, pin front facings to each side of remaining collar section, matching notches and small dots, clipping to stay-stitching if necessary. Baste. Stitch. Press seam up, pressing up remaining seam allowance on collar, between small dots.

30



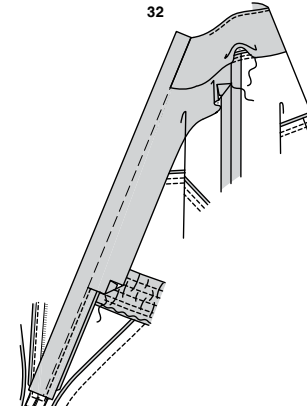
**30.** Open out front opening edges of jumpsuit, rolling the zipper teeth and underlap away from the opening edge. With RIGHT sides together, pin facing to neck edge and front, having raw edges even. Stitch upper and front edge keeping pressed edge of underlap free. Trim seam; clip curves. Do not trim front edges.

31



**31. UNDERSTITCH** neck edge of facing as far as possible. Turn facing to INSIDE, turning collar right side out. Press. Lift up facing; sew front neck seams together loosely by hand.

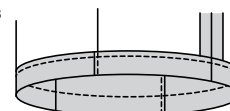
32



**32.** Turn facing down. **SLIPSTITCH** pressed edge of collar over seam. **SLIPSTITCH** facing at shoulder and waistline seams.

#### FINISHING

33



**33.** Press up hem on lower edge of jumpsuit. **FINISH** raw edge if you prefer. Stitch 1/4" (6mm) from raw edge. **NOTE:** If you prefer, press under 1/4" (6mm) on raw edge and stitch close to inner pressed edge.



# Congrats!

You've completed your sewing adventure

---

## SHARE YOUR LOOK



Post your pattern and tag us  
[@simplicity\\_creative\\_group](#) and [#simplicitypatterns](#)  
for a chance to be featured on our social media.

Look for more PDF patterns at [simplicity.com](https://www.simplicity.com)

Have a question or need help with your sewing project call us at  
1-888-588-2700



Simplicity ©2024 a division of IG Design Group Americas Inc. • Atlanta, GA 30342 USA [www.thedesigngroup.com](https://www.thedesigngroup.com) • All Rights Reserved. [www.simplicity.com](https://www.simplicity.com) • Made in the U.S.A. Fabriqué aux États-Unis.

To be used for individual private home use only and not for commercial or manufacturing purposes. • A usage privé seulement et non à des fins commerciales ou de production en série. • Para uso privado solamente, no se puede utilizar con propósitos de comercialización o de producción en serie.