

S3009

Simplicity



A



B



A,C

Designed and printed in USA.

Average

MISSES' JACKET IN TWO LENGTHS AND BAG

Suggested Fabrics: A,B,C: Faux Fur/Fur-Like, Fleece, Minky Fleece, Tweed, Wool Blends. **Contrast C:** Cotton Blends, Faux Leather, Microsuede, Satin. **Lining:** Cotton Blends, Polyester Blends. **Interfacing:** Lightweight Fusible.

Notions: A: Three ¾" (2cm) boutons. B: Four ¾" (2cm) boutons. C: One 14" (36cm) zipper, one ½" (1.5cm) heavy duty snap.

Sizes	6	8	10	12	14	16	18	20	22	24
European	32	34	36	38	40	42	44	46	48	50

BODY MEASUREMENTS: Select pattern size based on body measurements

Bust	30½	31½	32½	34	36	38	40	42	44	46	Ins.
Waist	23	24	25	26½	28	30	32	34	37	39	"
Hip-9" below waist	32½	33½	34½	36	38	40	42	44	46	48	"
Back-neck to waist	15½	15¾	16	16¼	16½	16¾	17	17¼	17½	17¾	"

Jacket A	60**	1¾	1¾	2	2	2½	2½	2¾	2¾	2¾	2¾	Yds.
Lining	45***	1¾	1¾	1¾	1¾	1¾	1¾	1¾	1¾	1¾	1¾	"
Interfacing	20"	- 2½ yds.										
Jacket B	60**	2¼	2¼	2¼	2½	2½	2½	2½	2½	2½	2½	Yds.
Lining	45***	1½	1½	1½	1½	2	2	2½	2½	2½	2½	"
Interfacing	20"	- 2½ yds.										

Bag C (one size) - 60 - ¾ yd.**
Contrast (Tab, Strap) - 45, 60 - 1¼ yds.**
Lining - 45* - 1 yd.**
Interfacing - 20" - 1¾ yds.

FINISHED GARMENT MEASUREMENTS (Includes Design and Wearing Ease)

A,B Bust	44½	45½	46½	48	50	52	54	56	58	60	Ins.
Width, lower edge											
Jacket A,B	44½	45½	46½	48	50	52	54	56	58	60	Ins.
Finished back length from base of neck											
Jacket A	20	20¼	20½	20¾	21	21¼	21½	21¾	22	22¼	Ins.
Jacket B	24½	24¾	25	25¼	25½	25¾	26	26¼	26½	26¾	"

*with nap **without nap

Moins Facile

VESTE EN DEUX LONGUEURS ET SAC POUR JEUNES FEMMES

Tissus Conseillés: A,B,C: Fourrures Synthétiques/imitation fourrure, Molleton, Minkee, Tweed, Lainages. **Contraste C:** Cotonnades, Simili cuir, Micro-suédine, Satin. **Doublure:** Cotonnades, Mélanges de polyester. **Entoilage:** Thermocollant léger.

Mercerie: A: 3 boutons de 2cm. B: 4 boutons de 2cm. C: 1 fermeture à glissière de 36cm, 1 bouton-pression résistant de 1.5cm.

Tailles	6	8	10	12	14	16	18	20	22	24
Françaises	34	36	38	40	42	44	46	48	50	52
Européen	32	34	36	38	40	42	44	46	48	50

MESURES DU CORPS: Choisissez la taille du patron basée sur les mesures du corps

Poitrine	78	80	83	87	92	97	102	107	112	117	cm
Taille	58	61	64	67	71	76	81	87	94	99	"
Hanches (23cm au-dessous de la taille)	83	85	88	92	97	102	107	112	117	122	cm

Dos du cou à la taille 39.5 40 40.5 41.5 42 42.5 43 44 44 44.5 "

Veste A 150cm* 1.7 1.7 1.8 1.8 1.9 1.9 2.1 2.1 2.1 2.3 m

Doublure 115cm** 1.1 1.3 1.3 1.3 1.3 1.4 1.5 1.6 1.7 1.7 "

Entoilage 51cm - 2.4m

Veste B 150cm* 2.1 2.1 2.1 2.1 2.2 2.2 2.3 2.3 2.3 2.4 m

Doublure 115cm** 1.4 1.7 1.7 1.7 1.8 1.8 1.9 1.9 1.9 1.9 "

Entoilage 51cm - 2.6m

Sac C (une taille) - 150cm* - 0.6m

Contraste (Fermeture à patte, Bretelle) - 115, 150cm* - 1.0m

Doublure 115cm** - 0.8m

Entoilage 51cm - 1.5m

MESURES DES VÊTEMENTS FINI (Motif et aisance de port compris)

A,B Poitrine	113	116	118	122	127	132	137	142	147	152	cm
Largeur à l'ourlet											
Veste A,B	113	116	118	122	127	132	137	142	147	152	cm
Longueur finie - dos, votre nuque à l'ourlet											
Veste A	51	51	52	53	53	54	55	55	56	57	cm
Veste B	62	63	64	64	65	65	66	67	67	68	"

*avec sens **sans sens



A



B



A

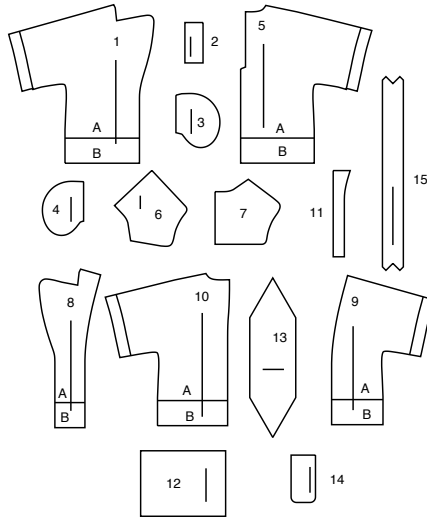
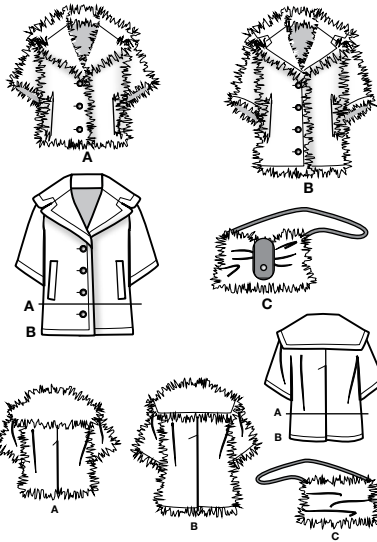
B



C

Simplicity®

Thank you for purchasing this Simplicity pattern. We made every effort to provide you with a high quality product.



- 1 FRONT - A,B
- 2 WELT - A,B
- 3 POCKET - A,B
- 4 POCKET LINING - A,B
- 5 BACK - A,B
- 6 UNDER COLLAR - A,B
- 7 UPPER COLLAR - A,B
- 8 FRONT FACING - A,B
- 9 FRONT LINING - A,B
- 10 BACK LINING - A,B
- 11 GUIDE FOR BUTTONHOLES - A,B
- 12 FRONT AND BACK - C
- 13 SIDE - C
- 14 TAB - C
- 15 STRAP - C

General Directions

The Pattern

- SYMBOLS**
- GRAIN LINE Place on straight grain of fabric parallel to selvage
 - PLACE SOLID LINE on fold of fabric.
 - CENTER FRONT OR BACK of garment.
 - NOTCHES
 - DOTS
 - CUTTING LINE
 - LENGTHEN OR SHORTEN LINES

SEAM ALLOWANCE: 5/8" (1.5cm) unless otherwise stated is included but not printed on MULTI-SIZE PATTERNS. Mark your size with colored felt tip pen. See chart on tissue for how to use MULTI-SIZE PATTERNS.

ADJUST IF NEEDED
Make adjustments before placing pattern on fabric.

TO LENGTHEN:
Cut pattern between lengthen or shorten lines. Spread pattern evenly, the amount needed and tape to paper.

TO SHORTEN:
At lengthen or shorten lines, make an even pleat taking up amount needed. Tape in place.

When lengthen or shorten lines are not given, make adjustments at lower edge of pattern.

Cutting/Marking

BEFORE CUTTING:
PRESS pattern pieces with a warm dry iron. PRE-SHRINK fabric by pre-washing washables or steam-pressing non-washables.

CIRCLE your cutting layout.

PIN pattern to fabric as shown in Cutting Layouts.

• FOR DOUBLE THICKNESS: Fold fabric with RIGHT sides together.

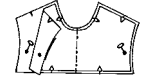
• FOR SINGLE THICKNESS: Place fabric RIGHT side up.

• FOR PILE, SHADED OR ONE WAY DESIGN FABRICS: Use "with nap" layouts

AFTER CUTTING:
Transfer markings to WRONG side of fabric before removing pattern. Use pin and chalk method or dressmaker's tracing paper and wheel.

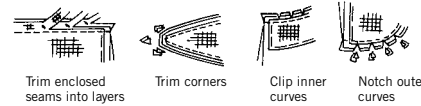
To Quick Mark:

- Snip edge of fabric to mark notches, ends of fold lines and center lines.
- Pin mark dots.



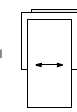
Sewing

- SEW garment following Sewing Directions.
- PIN or machine-baste seams matching notches.
- STITCH 5/8" (1.5 cm) seams unless otherwise stated.
- PRESS seams open unless otherwise indicated clipping when necessary so seams will lie flat.
- TRIM seams to reduce bulk, as shown below.



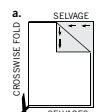
SPECIAL CUTTING NOTES

★ If layout shows a piece extending past fold, cut out all pieces except piece that extends.

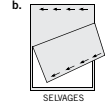


Open out fabric to single thickness. Cut extending piece on RIGHT side of fabric in position shown.

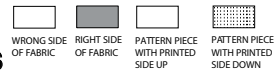
✱ Mark small arrows along both selvages indicating direction of nap or design. Fold fabric crosswise with RIGHT sides together, and cut along fold (a).



Turn one fabric layer around so arrows on both layers go in the same direction. Place RIGHT sides together (b).



Cutting Layouts



POSITION OF PATTERN PIECES MAY VARY SLIGHTLY ACCORDING TO YOUR PATTERN SIZE

JACKET A

USE PIECES 1 2 3 5 6 7 8

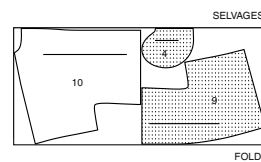
60" (150CM) WITH NAP ALL SIZES



LINING A

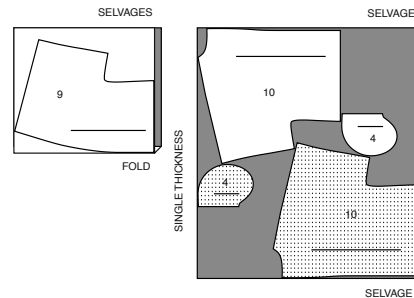
USE PIECES 4 9 10

45" (115CM) WITHOUT NAP SIZES 6 8 10 12 14 16



LINING B

45" (115CM) WITHOUT NAP SIZES 18 20 22 24

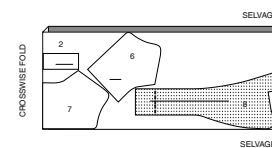


NOTE: DASHED LINE SHOWN ON PATTERN PIECES IN CUTTING LAYOUTS INDICATES CUTTING LINE FOR SHORTER LENGTH

INTERFACING A, B

USE PIECE 2 6 7 8

20" (51CM) ALL SIZES

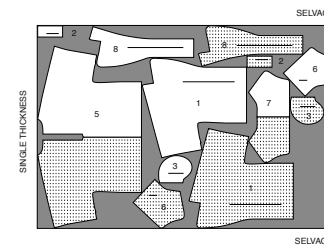


JACKET B

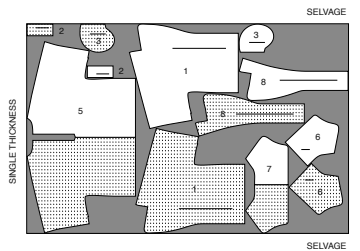
USE PIECES 1 2 3 5 6 7 8

60" (150CM) WITH NAP

SIZES 6 8 10 12 14 16 18 20 22



60" (150CM) WITH NAP SIZE 24

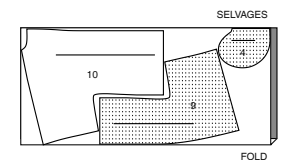


LINING B

USE PIECES 4 9 10

45" (115CM) WITHOUT NAP

SIZES 6

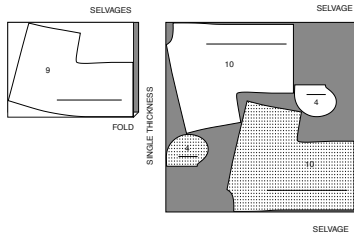


CUTTING LAYOUTS CONTINUED ON PAGE 2

S3009

2 of 4

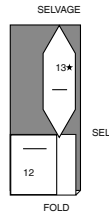
45" (115CM)
WITHOUT NAP
SIZES 8 10 12 14 16 18 20 22 24



BAG C

USE PIECES 12 13

60" (150CM)
WITH NAP
ALL SIZES

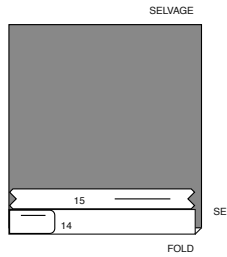


CONTRAST (TAB STRAP)

USE PIECES 14 15

NOTE: FOR LEATHER-LIKE FABRIC, ALTER TISSUE PATTERN BEFORE CUTTING. PLACE PINS WITHIN SEAM ALLOWANCE OR USE MASKING TAPE.
DO NOT USE A TRACING WHEEL TO TRANSFER MARKING.

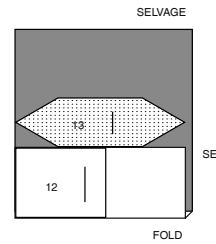
45" ,60" (115 CM, 150CM)
WITH NAP
ALL SIZES



LINING C

USE PIECES 12 13

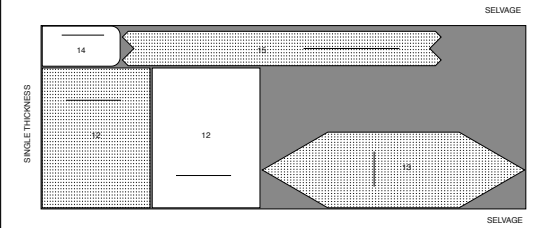
45" (115CM)
WITHOUT NAP
ALL SIZES



INTERFACING C

USE PIECES 12 13 14 15

20" (51CM)
ALL SIZES

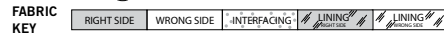


SEWING TUTORIALS



Build your skills viewing short, easy-to-follow videos at [simplicity.com/sewingtutorials](https://www.simplicity.com/sewingtutorials)

Sewing Directions



Read **General Directions** on page 1 before you begin.
Sewing methods in **BOLD TYPE** have Sewing Tutorial Video available.
Scan **QR CODE** to watch videos:

- CATCHSTITCH** - See how to catchstitch video.
- EASE/GATHER** - See sewing two row gathers video.
- EDGESTITCH** - See how to edgestitch video.
- NARROW HEM** - See sewing narrow hems video.
- REINFORCE** - See how to reinforce video.
- SLIPSTITCH** - See how to slip-stitch video.
- STAYSTITCH** - See how to do stay-stitching video.
- TOPSTITCH** - See how to topstitch video.
- TRIM**- see How to Sew: Trim, Clip, and Layer Seams video.

FINISH - Stitch 1/4" (6mm) from raw edge and finish with one of the following: (1) Pink OR (2) Overcast OR (3) Turn in along stitching and stitch close to fold OR (4) Overlock.

OPTIONAL FOR HEMS: Apply Seam Binding.

INTERFACING- Pin interfacing to **WRONG** side of fabric. Fuse interfacing in place following manufacturer's directions.

C. Heavier fur fabrics may need some pounding with a heavy object to keep seams and edges flat.

D. On **OUTSIDE**, with a pin, pick the pile up along the seams.

IMPORTANT: When using deep pile furs, use a longer stitch and looser tension when stitching. Release the presser foot of the machine if the fabric is especially thick.

SIMPLY THE BEST SEWING TECHNIQUES FOR FUR FABRICS

A. Hand-baste seams to prevent slipping. Gather by hand.
For high pile fabrics, shear away 1/2" (1.3cm) within the seam allowance.

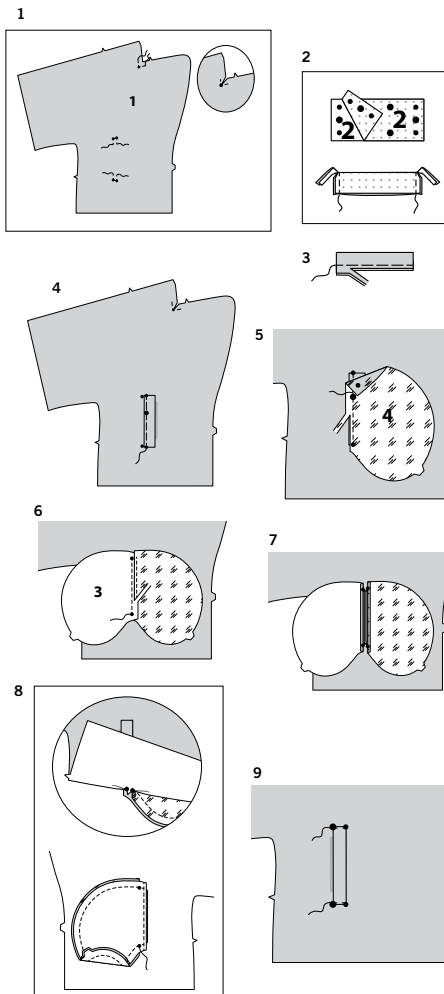
B. Never place iron directly on fur fabric.
Press on **WRONG** side, using a velvet board and cloth.

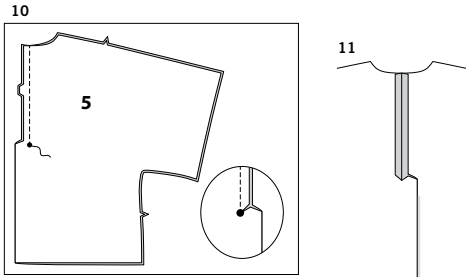
JACKET A, B

NOTE- View A will be shown unless otherwise indicated.

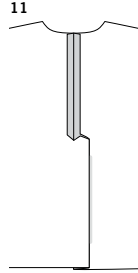
FRONT AND BACK

- 1. REINFORCE** corners of **FRONT** (1) along stitching lines, pivoting at small dots, as shown.
REINFORCE neck edge of front section at small dot, as shown. Clip to small dot being careful not to clip through stitching.
- 2.** Fuse **INTERFACING** to wrong side of **WELT** (2) sections following manufacturers directions.
Fold welt in half lengthwise with **WRONG** sides together. Stitch ends. **TRIM**.
- 3.** Turn welt. Press. Baste raw edges together. **TRIM** seam to 1/4"(6mm).
- 4.** Pin welt to each front, matching symbols and placing seamline along stitching line. Baste.
- 5.** With right sides together, pin **POCKET LINING** (4) to front, over welt, placing seamline along stitching line. Baste. Stitch between small dots. Trim pocket seam allowance to a scant 1/4"(6mm), being careful not to cut front.
- 6.** With right sides together, pin **POCKET** (3) to front, placing seamline along outer stitching line. Baste. Stitch between small dots. Trim pocket seam allowance to a scant 1/4"(6mm), being careful not to cut front.
- 7.** Slash along line between stitching, clipping diagonally to small dots.
- 8.** Turn pocket and triangular ends to **INSIDE**. Press. Stitch pocket edges together, catching triangular ends in stitching, keeping front free.
- 9.** On **OUTSIDE**, **EDGESTITCH** short ends of welt to secure.

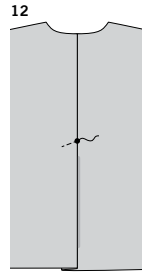




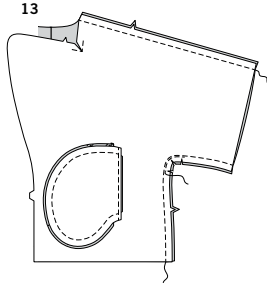
10. With RIGHT sides together, stitch BACK (5) sections together at center back, back stitching at large dot. Clip RIGHT back to large dot being careful not to clip through stitching.



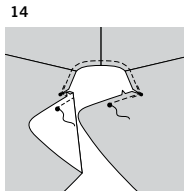
11. Press seam open above clip, pressing seam toward LEFT back below clip.



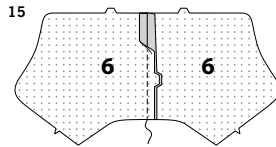
12. On OUTSIDE, stitch along stitching line through all thicknesses. Press.



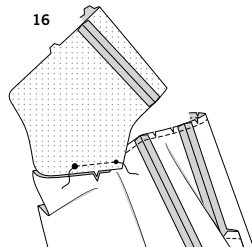
13. With RIGHT sides together, stitch front to back at shoulders and sides. To reinforce curve at underarm, stitch again over first stitching.



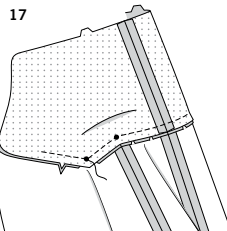
14. STAYSTITCH neck edge between large dots.



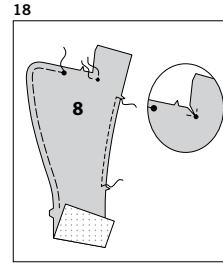
15. Fuse INTERFACING to UNDER COLLAR (6) sections, following manufacturer's directions. With RIGHT sides together, stitch center back seam of under collar sections.



16. Pin front edge of under collar to front edge of jacket, matching small and large dots, having raw edges even. Stitch between small and large dots, back-stitching at dots. Do not trim this seam. Press seam down. Clip back neck edge of jacket to stay-stitching along curves.

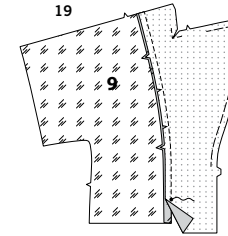


17. Pin remaining edge of under collar to neck edge of jacket, matching centers back and placing inner small dots at shoulder seams. Stitch seam between outer small dots, back-stitch to reinforce. TRIM neck; clip curves.

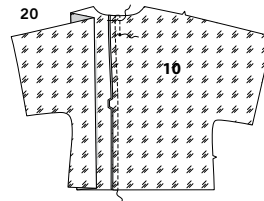


LINING

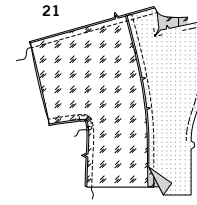
18. Apply INTERFACING to FRONT FACING (8) sections. REINFORCE small dot on neck at inner corner. Clip to small dot, being careful not to clip through stitching. STAYSTITCH side edges of facing. EASESTITCH front edge of facing between large dot and notches.



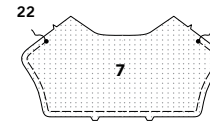
19. With RIGHT sides together, pin facing to FRONT LINING (9), matching notches, clipping to stay-stitching if necessary. Baste. Stitch, ending at lower small dot. Backstitch at dot to reinforce seam. Press seam toward front lining.



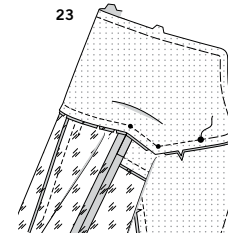
20. With RIGHT sides together, stitch center back seam of BACK LINING (10) sections. To form pleat, stitch along broken line ending at small dot. Press seam toward left back, forming pleat. Press well.



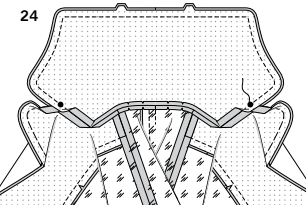
21. With RIGHT sides together, stitch front to back at shoulders and sides. To reinforce curve at underarm, stitch again over first stitching. Stay-stitch neck edge of lining in same manner as jacket.



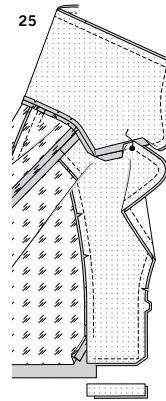
22. Apply INTERFACING to UPPER COLLAR (7). EASESTITCH notched edge of collar between large dots.



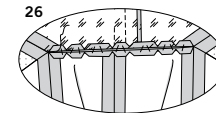
23. Clip neck edge of back lining to stay-stitching along curves. Pin upper collar to neck edge of front facing and lining, matching centers back, small and large dots, placing inner small dots at shoulder seams. Stitch between large dots, pivoting with needle in fabric at small dots at inner corners. TRIM back neck seam between shoulder seams; clip curves.



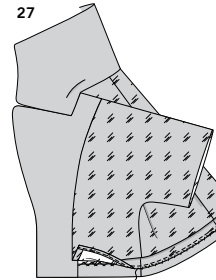
24. With RIGHT sides together, pin upper collar to under collar, matching centers and notches. Turn jacket seam allowances down. Hand-baste outer edges of upper and under collar together between large dots, working basting stitches from center back to large dot, adjusting ease-stitches to fit. Stitch as basted from center back to large dot, overlapping a few stitches at center back and being sure to stitch exactly to the large dots at each end of collar. Anchor thread ends securely at large dots.



25. Pin front facing to jacket, matching large dots and notches. Hand-baste from large dot at neck edge to lower edge of facing, adjusting ease-stitches to fit. Carefully turn neck seam allowance toward collar so that you can insert machine needle at the large dot. Stitch as basted from large dot to facing/lining seamline, being careful not to catch in collar seam allowances at large dot. Back-stitch at seam to reinforce. Anchor thread ends securely at large dots. Trim each seam of collar and facing carefully to within 1/4" (6mm) of stitching, paying close attention to intersecting seam allowances where collar and facing meet. Trim across collar and lapel corners. Trim lower edge of facing close to stitching. Trim lower edge of garment to within 5/8" (1.5cm) of inner edge of facing. Clip curves. Press all seams before turning.

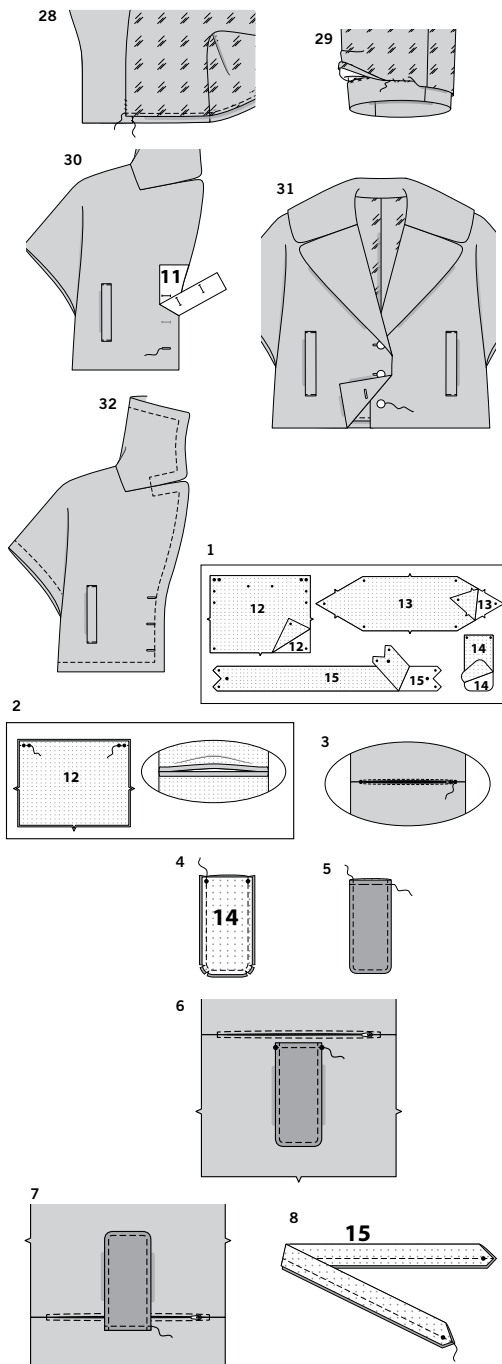


26. Turn facing/lining to inside, turning collar right side out. Press. Lift up facing/lining; sew neck seams together loosely by hand.



FINISHING

27. NARROW HEM lower edge of lining. Press up hem on lower edge of jacket. CATCHSTITCH jacket hem in place. Hand-sew facing to hem with small stitches. Slip sleeve lining in place. Tack seams of jacket and lining together loosely.



28. Press lining down and **SLIPSTITCH** remaining front edge of lining to facing.

29. Press under sleeve hem. **CATCHSTITCH** hem in place. Press under seam allowance on lower edge of sleeve lining. **SLIPSTITCH** pressed edge of sleeve lining to hem. **NOTE:** A pleat will form at lower edge for wearing ease.

30. To mark buttonholes in **RIGHT** front place **GUIDE FOR BUTTONHOLES (11)** along finished edge of garment, matching centers, as shown. Transfer buttonhole markings to garment. Make buttonholes at markings.

31. Lap **RIGHT** front over **LEFT**, matching centers. Sew buttons under buttonholes.

32. OPTIONAL: On outside, **TOPSTITCH** 1/2"(2.5cm) away from finished edges of jacket, sleeve and collar, keeping lower edge of lining free.

BAG C

INTERFACING

1. Apply **INTERFACING** to **WRONG** side of each matching fabric section, following manufacturer's directions.

FRONT AND BACK

2. With **RIGHT** sides together, stitch **FRONT AND BACK (12)** sections together at upper edge from raw edge to inner large dots. Press seam open, pressing under remaining seam allowances between inner large dots.

3. With zipper closed and facing up, pin zipper under opening edges, having zipper teeth exposed, placing top stop at one large dot and bottom of zipper at remaining large dot, as shown. Using an adjustable zipper foot, **EDGESTITCH** zipper in place, squaring stitching above and below opening. **TIP:** To avoid bumpy stitching around the tab and slider, stop stitching just before you get to the slider. Leaving the needle in the fabric, raise the presser foot and pull the slider down below the needle.

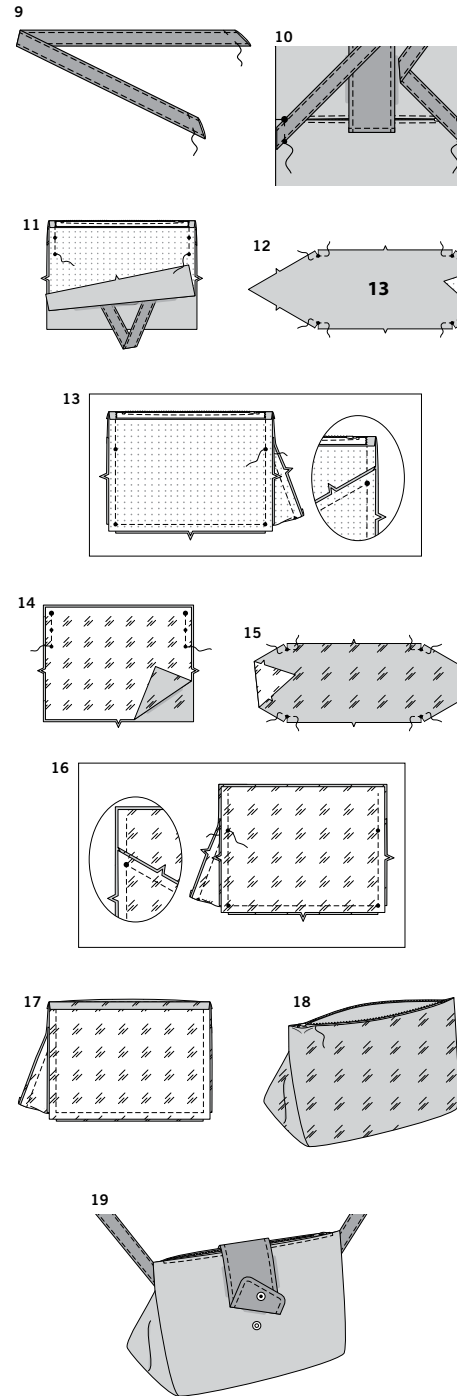
4. With **RIGHT** sides together pin **TAB (14)** sections together having raw edges even. Stitch along outer edge, in a 3/8"(1cm) seam, leaving edge with small dots open. **TRIM** seam, clip curves.

5. Turn tab **RIGHT** side out. Press. Baste raw edges together. **TOPSTITCH** outer edges of flap.

6. On **OUTSIDE**, with curved side facing down, pin tab to one side of front and back, placing basting along placement line. Stitch. **TRIM** seam.

7. Press flap up over raw edge of seam. **TOPSTITCH** flap in place. This will be the back of the bag.

8. Fold **STRAP (15)** in half lengthwise, with **RIGHT** sides together, matching markings. Stitch, leaving ends open. **TRIM** seam.



9. Turn strap **RIGHT** side out. Press. **EDGESTITCH** side edges of strap. Baste raw edges together.

10. On **OUTSIDE**, pin ends of strap to back matching large and small dots. Baste.

11. With **RIGHT** sides together, stitch front to back at side seams, ending at small dot. Backstitch to reinforce seam.

12. REINFORCE SIDE (13) at inner small dots at corners. Clip to small dots being careful not to clip through stitching.

13. With **RIGHT** sides together, pin side section to each side of front and back, matching small dots, pivoting with needle in fabric at small dots. Baste. Stitch. **TRIM** seam.

LINING

14. With **RIGHT** sides together, stitch front and back sections together at sides, from large dot at upper edge ending at small dot at side seam. Backstitch to reinforce seam.

15. REINFORCE side lining section at inner small dots at corners. Clip to small dots being careful not to clip through stitching.

16. With **RIGHT** sides together, pin side section to each side of front and back, matching small dots, pivoting with needle in fabric at small dots. Baste. Stitch. **TRIM** seam.

17. Press under remaining seam allowances of lining between large dots.

18. With **WRONG** sides together, pin lining to bag matching seams. **SLIPSTITCH** lining to zipper tape, clearing zipper teeth.

FINISHING

19. Turn bag **RIGHT** side out. Press. Separate snap. Apply knob half of snap to tab at marking, with finished edge of snap facing out. Apply socket half of snap to front at marking, through all thicknesses.



Congrats!

You've completed your sewing adventure

**SHARE
YOUR** LOOK



Post your pattern and tag us
[@simplicity_creative_group](#) and [#simplicitypatterns](#)
for a chance to be featured on our social media.

Look for more PDF patterns at [simplicity.com](https://www.simplicity.com)

Have a question or need help with your sewing project call us at
1-888-588-2700



Simplicity ©2024 a division of IG Design Group Americas Inc. • Atlanta, GA 30342 USA www.thedesigngroup.com • All Rights Reserved. www.simplicity.com • Made in the U.S.A. Fabriqué aux États-Unis.

To be used for individual private home use only and not for commercial or manufacturing purposes. • A usage privé seulement et non à des fins commerciales ou de production en série. • Para uso privado solamente, no se puede utilizar con propósitos de comercialización o de producción en serie.