

S3008

Simplicity®



A



B

Designed and printed in USA.

Average

MISSES' COAT IN TWO LENGTHS

Suggested Fabrics: Faux Fur, Fleece, Tweed, Wool Types. **Lining:** Cotton Blends, Polyester Blends. **Interfacing:** Medium-weight Sew in.

Sizes	8	10	12	14	16	18	20	22	24	26
European	34	36	38	40	42	44	46	48	50	52

BODY MEASUREMENTS: Select pattern size based on body measurements

Bust	31½	32½	34	36	38	40	42	44	46	48	Ins.
Waist	24	25	26½	28	30	32	34	37	39	41½	"
Hip-9" below waist	33½	34½	36	38	40	42	44	46	48	50	"
Back-neck to waist	15¾	16	16¼	16½	16¾	17	17¼	17½	17¾	17¾	"

Coat A	60**	2%	2%	2½	2½	2½	2½	2¾	2¾	2¾	2¾	Yds.
Lining	45***	2¼	2¼	2¼	2¼	2¼	2¼	2½	2½	2½	2½	"
Interfacing - 20" - 2 yds.												

Coat B	60**	3%	3%	3%	3%	3½	3½	3½	3½	3½	3½	Yds.
Lining	45***	3%	3%	3%	3%	3¾	3¾	3¾	3¾	3¾	3¾	"
Interfacing - 20" - 2½ yds.												

FINISHED GARMENT MEASUREMENTS (Includes Design and Wearing Ease)

A,B Bust	40	41	42½	44½	46½	48½	50½	52½	54½	56½	Ins.
A,B Waist	41½	42½	44	46	48	50	52	54	56	58	"
A,B Hip	43½	44½	46	48	50	52	54	56	58	60	"
Width, lower edge											

Coat A	45	46	47½	49½	51½	53½	55½	57½	59½	61½	Ins.
Coat B	48	49	50½	52½	54½	56½	58½	60½	62½	64½	"

Finished back length from base of neck

Coat A	31¾	32	32¼	32½	32¾	33	33¼	33½	33¾	34	Ins.
Coat B	49¾	50	50¼	50½	50¾	51	51¼	51½	51¾	52	"

*with nap **without nap

Moins Facile

MANTEAU EN DEUX LONGUEURS POUR JEUNES FEMMES

Tissus Conseillés: Fourrures Synthétiques, Molleton, Tweed, Types laine. **Doublure:** Cotonnades, Mélanges de polyester. **Entoilage:** de poids moyen à coudre.

Tailles	8	10	12	14	16	18	20	22	24	26
Françaises	36	38	40	42	44	46	48	50	52	54
Européen	34	36	38	40	42	44	46	48	50	52

MESURES DU CORPS: Choisissez la taille du patron basée sur les mesures du corps

Poitrine	80	83	87	92	97	102	107	112	117	122	cm
Taille	61	64	67	71	76	81	87	94	99	106	"
Hanches (23cm au-dessous de la taille)	85	88	92	97	102	107	112	117	122	127	cm

Dos du cou à la taille 40 40.5 41.5 42 42.5 43 44 44 44.5 44.5 "

Manteau A 150cm* 2.2 2.2 2.3 2.3 2.3 2.4 2.5 2.5 2.5 2.5 m

Doublure 115cm** 2.1 2.1 2.1 2.1 2.1 2.1 2.3 2.3 2.4 2.4 "

Entoilage - 51cm - 1.8m

Manteau B 150cm* 3.1 3.1 3.1 3.1 3.2 3.2 3.2 3.2 3.2 3.3 m

Doublure 115cm** 2.9 2.9 2.9 2.9 3.0 3.1 3.4 3.4 3.5 3.5 "

Entoilage - 51cm - 2.3m

MESURES DES VÊTEMENTS FINI (Motif et aisance de port compris)

A,B Poitrine	102	104	108	113	118	123	128	133	138	144	cm
A,B Taille	105	108	112	117	122	127	132	137	142	147	"
A,B Hanches	110	113	117	122	127	132	137	142	147	152	"

Largeur à l'ourlet

Manteau A 114 117 121 126 131 136 141 146 151 156 cm

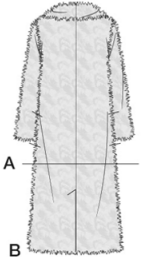
Manteau B 122 124 128 133 138 144 149 154 159 164 "

Longueur finie - dos, votre nuque à l'ourlet

Manteau A 81 81 82 83 83 84 84 85 86 86 cm

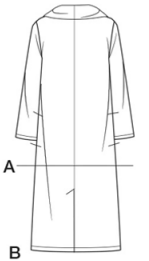
Manteau B 126 127 128 128 129 130 130 131 131 132 "

*avec sens **sans sens



A

B

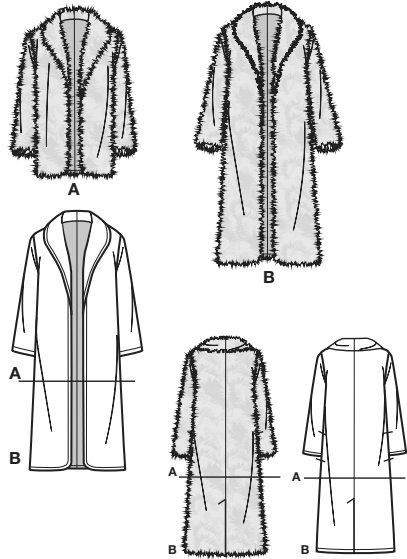


A

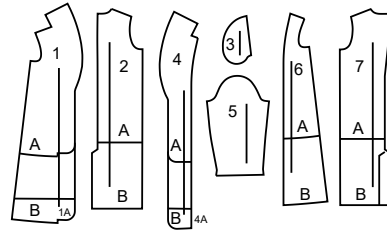
B

Simplicity®

Thank you for purchasing this Simplicity pattern.
We made every effort to provide you with a high quality product.



7 PIECES



- 1 Front-A,B
(1A) Extension-B
2 Back-A,B
3 Pocket-A,B
4 Front Facing-A,B
(4A) Extension-B
5 Sleeve-A,B
6 Front Lining-A,B
7 Back Lining-A,B



www.simplicity.com



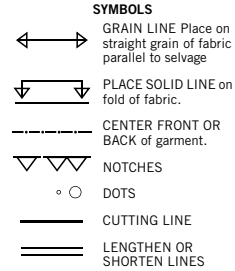
info@simplicity.com



1-888-588-2700

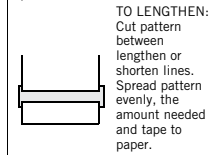
General Directions

The Pattern



SEAM ALLOWANCE: 5/8" (1.5cm) unless otherwise stated is included but not printed on MULTI-SIZE PATTERNS. Mark your size with colored felt tip pen. See chart on tissue for how to use MULTI-SIZE PATTERNS.

ADJUST IF NEEDED
Make adjustments before placing pattern on fabric.



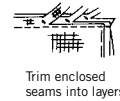
TO LENGTHEN:
Cut pattern between lengthen or shorten lines. Spread pattern evenly, the amount needed and tape to paper.

TO SHORTEN:
At lengthen or shorten lines, make an even pleat taking up amount needed. Tape in place.

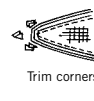
When lengthen or shorten lines are not given, make adjustments at lower edge of pattern.

Sewing

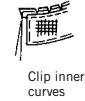
- SEW garment following **Sewing Directions**.
- PIN or machine-baste seams matching notches.
- STITCH 5/8" (1.5 cm) seams unless otherwise stated.
- PRESS seams open unless otherwise indicated clipping when necessary so seams will lie flat.
- TRIM seams to reduce bulk, as shown below.



Trim enclosed seams into layers



Trim corners



Clip inner curves



Notch outer curves

Cutting/Marking

BEFORE CUTTING:

PRESS pattern pieces with a warm dry iron. PRE-SHRINK fabric by pre-washing washables or steam-pressing non-washables.

CIRCLE your cutting layout.

PIN pattern to fabric as shown in Cutting Layouts.

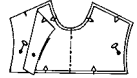
- FOR DOUBLE THICKNESS: Fold fabric with RIGHT sides together.
- FOR SINGLE THICKNESS: Place fabric RIGHT side up.
- FOR PILE, SHADED OR ONE WAY DESIGN FABRICS: Use "with nap" layouts

AFTER CUTTING:

Transfer markings to WRONG side of fabric before removing pattern. Use pin and chalk method or dressmaker's tracing paper and wheel.

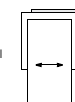
To Quick Mark:

- Snip edge of fabric to mark notches, ends of fold lines and center lines.
- Pin mark dots.



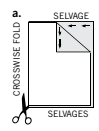
SPECIAL CUTTING NOTES

★ If layout shows a piece extending past fold, cut out all pieces except piece that extends.

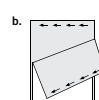


Open out fabric to single thickness. Cut extending piece on RIGHT side of fabric in position shown.

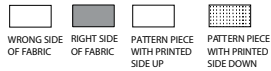
✱ Mark small arrows along both selvages indicating direction of nap or design. Fold fabric crosswise with RIGHT sides together, and cut along fold (a).



Turn one fabric layer around so arrows on both layers go in the same direction. Place RIGHT sides together (b).



Cutting Layouts



POSITION OF PATTERN PIECES MAY VARY SLIGHTLY ACCORDING TO YOUR PATTERN SIZE

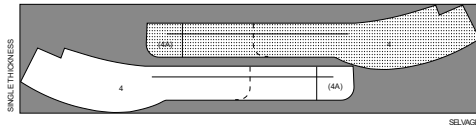
INTERFACING A, B

USE PIECE 4 (4A)

Note: Before cutting fabric, join piece in parentheses to corresponding piece following instructions on tissue pattern.

Note: Dashed line shown on pattern pieces in cutting, layouts indicates cutting line for shorter length.

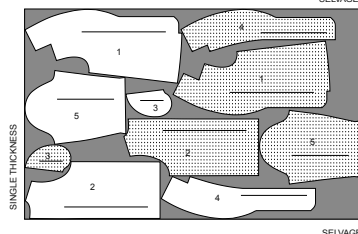
20" (51CM)
ALL SIZES



COAT A

USE PIECES 1 2 3 4 5

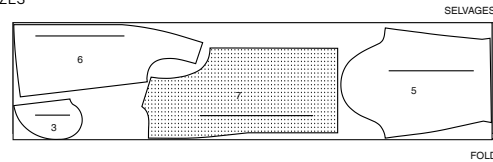
60" (150CM)
WITH NAP
ALL SIZES



LINING A

USE PIECES 3 5 6 7

45" (115CM)
WITH NAP
ALL SIZES

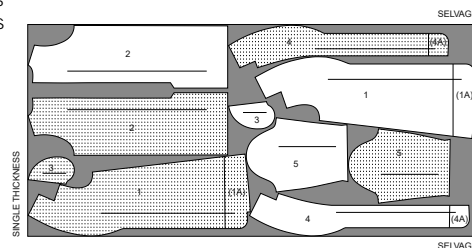


COAT B

USE PIECES 1 (1A) 2 3 4 (4A) 5

Note: Before cutting fabric, join piece in parentheses to corresponding piece following instructions on tissue pattern.

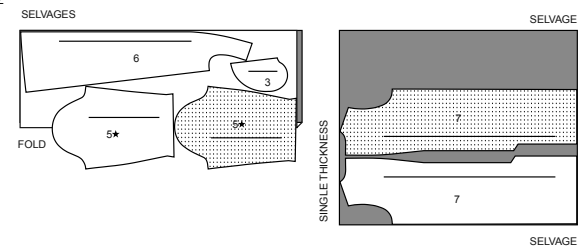
60" (150CM)
WITH NAP
ALL SIZES



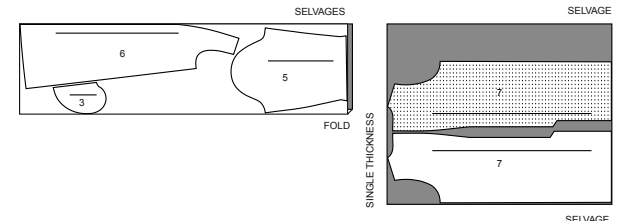
LINING B

USE PIECES 3 5 6 7

45" (115CM)
WITH NAP
SIZES 8 10 12
14 16 18



45" (115CM)
WITH NAP
SIZES 20 22 24 26



Sewing Directions

FABRIC KEY



Read General Directions on page 1 before you begin.

SIMPLY THE BEST SEWING TECHNIQUES FOR... FAUX FUR

A. Hand-baste seams to prevent slipping. Gather by hand. For high pile fabrics, shear away 1/2" (1.3cm) within the seam allowance.

B. Never place iron directly on fur fabric. Press on WRONG side, using a velvet board and cloth.

C. Heavier fur fabrics may need some pounding with a heavy object to keep seams and edges flat.

D. On OUTSIDE, with a pin, pick the pile up along the seams.

IMPORTANT: When using deep pile furs, use a longer stitch and looser tension when stitching. Release the presser foot of the machine if the fabric is especially thick.

- Stabilize shoulder seams by pinning hem tape, clear elastic, or twill tape along seam line before stitching.
- When sewing around shaped areas sew slowly, being careful not to stretch the fleece as you feed fabric through your machine.
- Finger press or steam press on a low temperature setting using a press cloth.

Sewing methods in **BOLD TYPE** have Sewing Tutorial Video available. Scan **QR CODE** to watch videos:

CATCHSTITCH - See Hand Stitching: "how to catchstitch" video.

EASESTITCH/GATHER - See Gathering: "sewing two row gathers" video.

REINFORCE - See Machine Stitches: "how to reinforce" video.

SLEEVE - See Armholes/Sleeves: "sewing a set-in sleeve" video.

SLIPSTITCH - See Hand Stitching: "how to slip stitch" video.

STAYSTITCH - See Machine Stitches: "how to do stay-stitching" video.

TOPSTITCH - See Machine Stitches: "how to topstitch" video.

TRIM - See Seams: "how to trim, clip and layer seams" video.

UNDERSTITCH - see Machine Stitches: "how to understitch" video.

PATTERN PIECES WILL BE IDENTIFIED BY NUMBERS THE FIRST TIME THEY ARE USED.

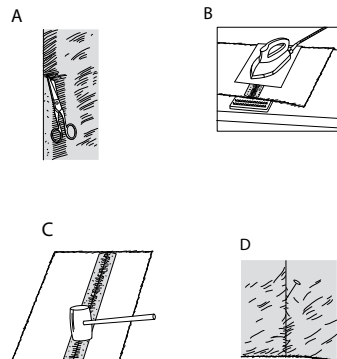
STITCH 5/8" (1.5CM) SEAMS WITH RIGHT SIDES TOGETHER UNLESS OTHERWISE STATED.

COAT A, B

NOTE: The first view mentioned will be illustrated unless otherwise indicated.

FRONT AND BACK A

- STAYSTITCH** front edge of FRONT (1) sections above double-notches, stitching 1/2" (1.3cm) from raw edge in direction of arrows, as shown. **STAYSTITCHING** will not be shown in the following illustrations. Using fine stitches, **REINFORCE** seam line at small dot on inner corner only for about 1" (2.5cm) on each side of small dot, pivoting with needle in fabric at small dot. Clip seam allowance to small dot at inner corner, being careful not to cut through reinforcement stitching.



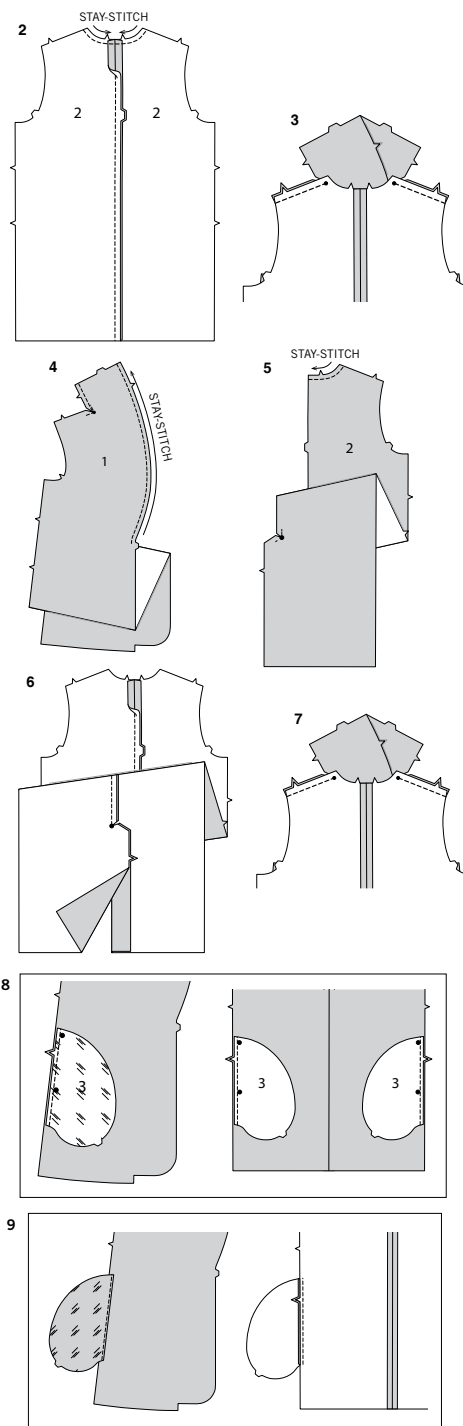
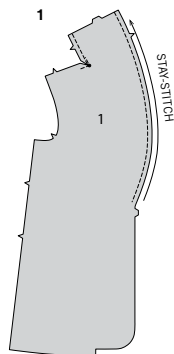
FLEECE

- When pinning pieces together, use long pins...the kind with bead heads are best because short pins tend to get lost in the fleece.
- Use a ball point needle.
- When stitching, try using narrow zig-zag stitches, adjusting the width and length for the type of fleece you are using. Always test first on some scraps and keep for reference.
- Sew slowly and carefully the first time you stitch a seam as stitches are hard to remove.

SEWING TUTORIALS



Build your skills viewing short, easy-to-follow videos at [simplicity.com/sewingtutorials](https://www.simplicity.com/sewingtutorials)



- STAYSTITCH** neck edge of BACK (2) sections. Stitch center back seam of back sections.

- Pin back to fronts at shoulder seams, matching small dots. Stitch shoulder seam to small dot, back-stitching at small dot to reinforce seam.

FRONT AND BACK B

- STAYSTITCH** front edge of FRONT (1) sections above double-notches, stitching 1/2" (1.3cm) from raw edge in direction of arrows, as shown. **STAYSTITCHING** will not be shown in the following illustration. Using fine stitches, **REINFORCE** seamline at inner corner. Clip seam allowance on inner corner to small dot, being careful not to clip through stitching.

- STAYSTITCH** neck edge of BACK (2) sections. **REINFORCE** and clip inner corners at large dot.

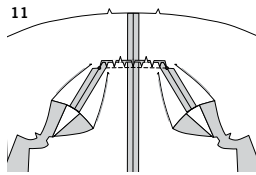
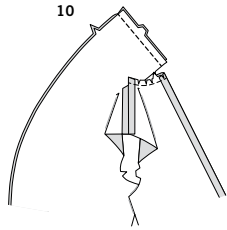
- With RIGHT sides together and raw edges even, pin back sections together at center back, matching large dots. Stitch center back seam to large dot, back-stitching at large dot to reinforce.

- Pin back to fronts at shoulder seams, matching small dots. Stitch shoulder seam to small dot, back-stitching at small dot to reinforce seam.

CONTINUE AS FOLLOWS FOR VIEWS A, B

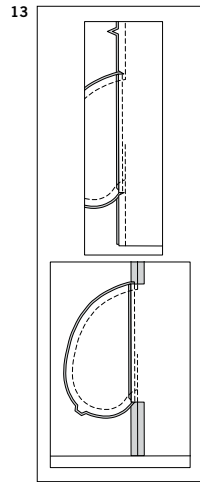
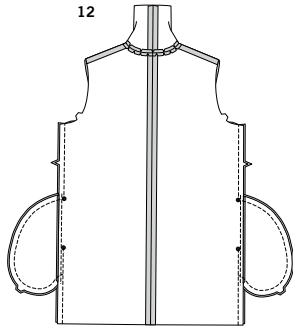
- Apply pockets to side edges of front and back as follows: With RIGHT sides together, pin POCKET (3) cut of LINING to front, matching large dots and having raw edges even. Stitch in a 3/8" (1cm) seam. Stitch pocket cut of FABRIC to back in same manner.

- Press seam toward pocket, pressing pocket out. **UNDERSTITCH** front pocket by stitching through pocket and seam allowance close to seam.



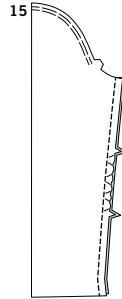
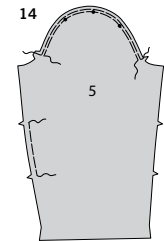
10. Clip neck edge of back to stay-stitching along curves. Stitch center back seam of neck extensions.

11. Pin collar extension to neck edge of back, matching centers back, notches, and small dots. Stitch seam between small dots, back-stitching at small dots to reinforce seam.
TRIM seam; clip curves. Press seam open.



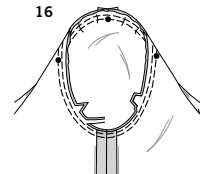
12. Pin fronts to back at side seams, matching large dots. Stitch side seams, leaving an opening between large dots; back-stitch at large dots to reinforce seam. Stitch pocket edges together to side seam.

13. Clip coat back seam allowance at ends of pockets. Press seam open above and below clip. Press pocket toward front.

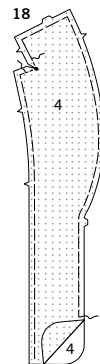
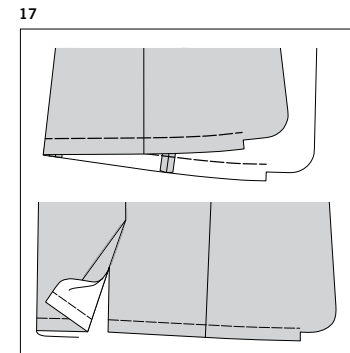


14. To **EASE** top of each **SLEEVE** (5) between notches, stitch along seam line and 1/4" (6mm) **INSIDE** seam allowance, using a long machine-stitch. **EASE** back edge of sleeve between notches.

15. Pin side edges of **SLEEVE** together, matching notches. Pull up ease stitches in back to fit. To distribute fullness evenly, slide fabric along bobbin threads until there are no puckers or tucks on the seam line. Baste. Stitch.



16. Turn sleeve **RIGHT** side out. Hold coat **WRONG** side out with armhole toward you. Baste, then stitch sleeve into armhole, having center small dot at shoulder seam, matching underarm seams, notches and remaining small dots, adjusting ease to fit. Stitch again 1/4" (6mm) from first stitching. Trim seam below notches close to stitching. Press only the seam allowance, shrinking out fullness.

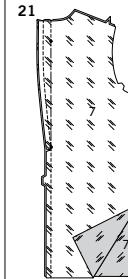
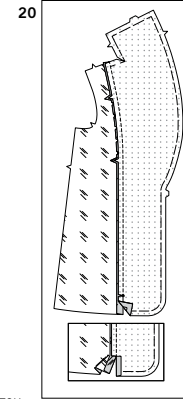
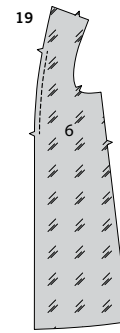


17. Mark hem extension on lower edge of coat with hand-basting 1-1/2" (3.8cm) from lower edge. This will be helpful when pressing up hem after the lining is stitched to the coat/jacket in a later step. Mark sleeve hem in same manner.

FRONT AND BACK LINING A

NOTE: If you have not already done so, cut sleeve lining sections 1" (2.5cm) shorter than sleeve coat sections before stitching seams.

18. Baste interfacing to **WRONG** side of **FRONT FACING** (4) sections, **REINFORCE** and clip inner corner at small dot.



19. **STAY-STITCH** front edge of **FRONT LINING** (6) sections between notches.

20. With **RIGHT** sides together and raw edges even, stitch front lining to front facing, matching notches, and small dots, clipping front lining as needed. Stitch seam above small dot, back-stitching at small dot. Clip only the facing seam allowance at end of stitching. Press seam toward lining, pressing under 5/8" (1.5cm) on inner edge of facing, as shown.

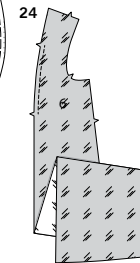
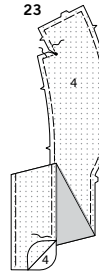
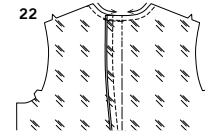
21. With **RIGHT** sides together and raw edges even, pin center back seam of **BACK LINING** (7) sections, matching small dots and broken lines, as shown. Stitch center back seam at back edges. To make pleat, stitch along broken line above and below small dots, back-stitching at each dot. Baste along broken lines between small dots. (Remove basting when garment is completed). Clip **RIGHT** back seam allowance to small dot at end of pleat.

22. Press pleat toward **LEFT** back. Baste pleat across raw edge. **STAY-STITCH** neck edge.

FRONT AND BACK LINING B

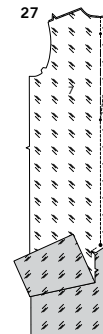
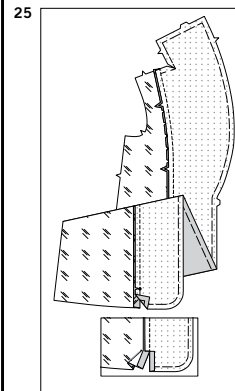
NOTE: If you have not already done so, cut sleeve lining sections 1" (2.5cm) shorter than sleeve coat sections before stitching seams.

23. Baste interfacing to **WRONG** side of **FRONT FACING** (4) sections. **REINFORCE** and clip inner corner at small dot.



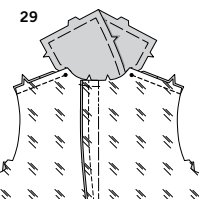
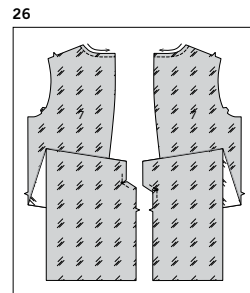
24. **STAY-STITCH** front edge of **FRONT LINING** (6) sections between notches.

25. With **RIGHT** sides together and raw edges even, stitch front lining to front. Stitch seam above small dot, back-stitching at small dot. Clip only the facing seam allowance at end of stitching. Press seam toward lining, pressing under 5/8" (1.5cm) on inner edge of facing, as shown.

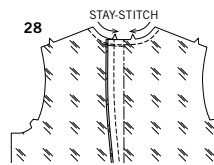


26. **STAY-STITCH** neck edge of **BACK LINING** (7) sections. **REINFORCE** and clip inner corner of **LEFT** vent only at small dot. **REINFORCE** and clip inner corner of **RIGHT** vent only at large dot.

27. With **RIGHT** sides together and raw edges even, pin center back seam of back lining sections, bringing small dots and broken lines for pleat together, matching remaining small dots, as shown. Stitch center back seam. To make pleat, stitch along broken line above and below small dots, back-stitching at each dot. Baste along broken lines between small dots. (Remove basting when garment is completed). Clip **RIGHT** back lining to small dot above triple notch.



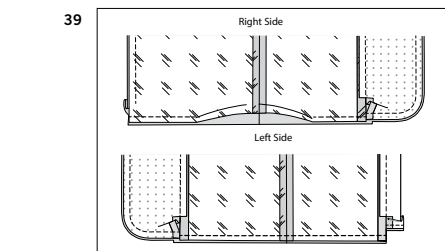
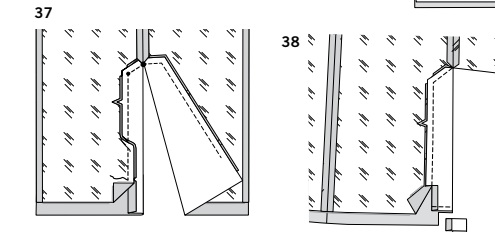
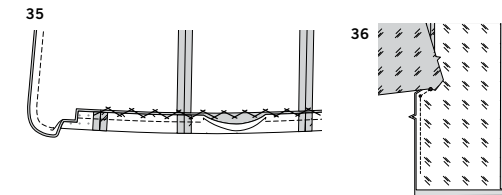
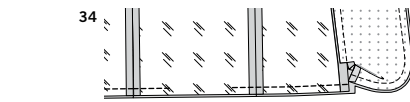
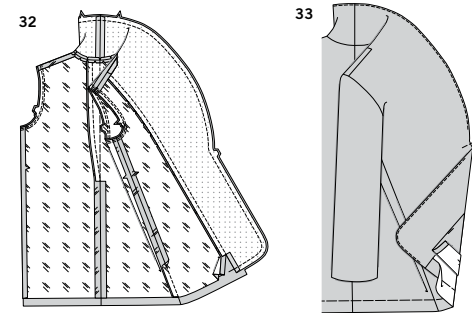
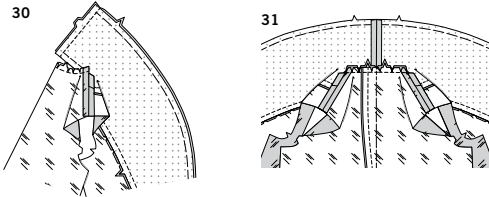
28. Press pleat toward **LEFT** back. Baste pleat across raw edge. **STAY-STITCH** neck edge. Press seam open from end of pleat to about 3" (7.5cm) above vent.



29. Pin back to fronts at shoulder seams, matching small dots. Stitch shoulder seam to small dot, back-stitching at small dot to reinforce seam.

S3008

4 of 4



CONTINUE AS FOLLOWS FOR VIEWS A, B

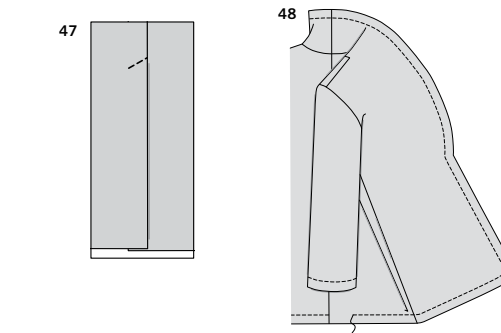
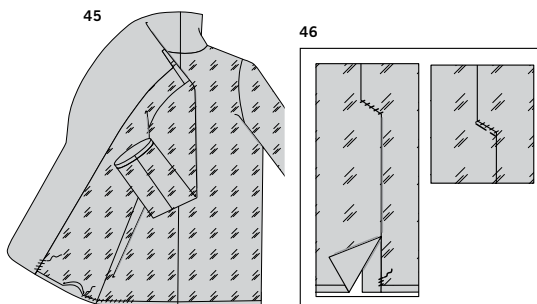
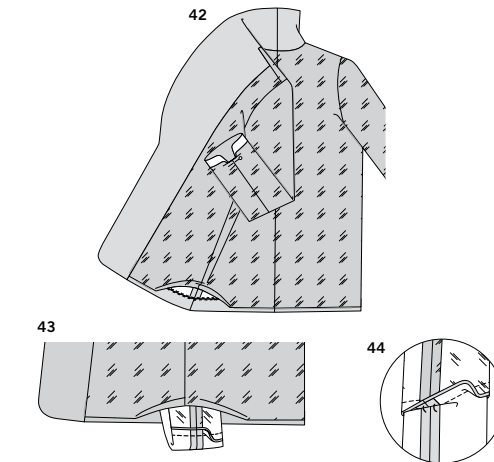
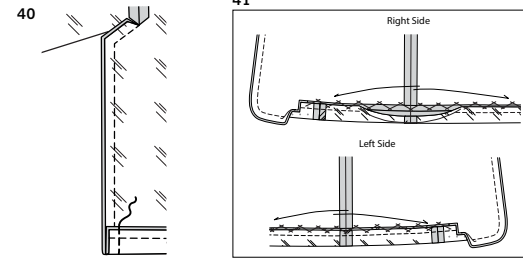
- 30.** Clip back neck edge of lining to stay-stitching along curves. Stitch center back seam of neck extensions.
- 31.** Pin facing to neck edge of back lining, matching centers back, notches, and small dots. Stitch seam between small dots, back-stitching at small dots to reinforce. **TRIM** seam; clip curves. Press seam open.
- 32.** Stitch lining back to front at side seams, make sleeve, and insert into armhole in same manner as jacket or coat. With **RIGHT** sides together, pin facing and lining to coat, matching centers back, shoulder seams, and notches. Hand-baste from center back to double notch, easing front facing to fit. Starting at center back, stitch collar and front edges as basted and then along seam line to inner edge of facing, overlapping a few stitches at center back. **TRIM** seam; clip curves.
- 33.** **NOTE:** You can omit **UNDERSTITCHING** if **TOPSTITCHING** outer edges of coat.
- FOR NON-FUR FABRICS ONLY** - Turn coat **RIGHT** side out. Using your tissue pattern as a guide, mark notches on front edges of coat with pin. On **OUTSIDE**, **UNDERSTITCH** collar to within 3" (7.5cm) of double notches by pressing coat and seam allowances away from facing, stitching through coat and seam allowances close to seam. On **INSIDE**, **UNDERSTITCH** front facing to within 3" (7.5cm) of double notch by pressing facing and seams away from coat, stitching through facing and seam allowances close to seam. **UNDERSTITCHING** will not be shown in following illustrations.

CONTINUE AS FOLLOWS FOR VIEW A

- 34.** With **RIGHT** sides together and raw edges even, pin lower edges of coat and lining, matching seams. Stitch, leaving an opening on back for turning.
- 35.** With the **WRONG** side of coat facing you, turn up hem allowance along basting. **CATCH STITCH** coat hem in place between inner facing seams, being careful not to catch opening edge of lining at back.

CONTINUE AS FOLLOWS FOR VIEW B

- 36.** Stitch **RIGHT** back vent edges of coat and lining sections together, as follows: Spread clipped edges of vent apart at large dot, as shown. With **RIGHT** sides together, pin vent edges of **RIGHT** back lining and coat together, matching small and large dots. Keeping **LEFT** coat and lining out of the way, stitch from large dot to 2" (5cm) above lower edge of lining, pivoting with needle in fabric at small dot and back-stitching at each end to reinforce. **TRIM** corners.
- 37.** Stitch **LEFT** back vent edges of coat and lining sections together, as follows: Spread clipped edges of vent apart at large dot, as shown. With **RIGHT** sides together, pin vent edges of **LEFT** back lining and coat together, matching small and large dots. Keeping **RIGHT** coat and lining out of the way, stitch from large dot to 2" (5cm) above lower edge of lining, pivoting with needle in fabric at small dot and back-stitching at each end to reinforce. **TRIM** corners. Clip left vent seam allowance of coat at end of stitching in same manner as for right vent.
- 38.** Press seams toward lining, pressing under 5/8" (1.5cm) on inner edge of **LEFT** coat vent below clip. Turn **LEFT** back vent along foldline on coat so **RIGHT** sides are together, forming a facing. Stitch **LEFT** vent exactly 1-1/2" (3.8cm) from lower edge, keeping lining free. Trim facing close to stitching. Trim coat to within 5/8" (1.5cm) of inner edge of facing.
- 39.** With **RIGHT** sides together, pin lower edges of coat and lining together, matching seams. Stitch **RIGHT** coat and lining together 1/2" (1.3cm) from raw lower edges between inner front facing seam and raw back vent edges, leaving an opening for turning, as shown. Stitch **LEFT** coat and lining together 1/2" (1.3cm) from raw lower edges between inner front facing seam and vent seam. Since the coat is 1" (2.5cm) longer than the lining, folds in the coat will develop at this point in the construction process.



- 40.** At **RIGHT** back vent only, turn up coat hem over lining along hem line (hem will turn up with coat), as shown. Stitch remaining **RIGHT** back vent edges together, connecting to previous stitching. Trim seam and corners.
- 41.** With the **WRONG** side of coat facing you, turn up hem allowance along basting. **CATCH STITCH** coat hem in place on right and left sides, between inner facing seam and 4" (10cm) from vent, being careful not to catch opening edge of lining.

CONTINUE AS FOLLOWS FOR VIEWS A, B

- 42.** Turn coat **RIGHT** side out through opening; press, pressing hem in place. Slip sleeves in place. In order to match seams correctly, turn seam allowances on sleeve edges of coat and lining toward each other at underarm seams, as shown. Anchor the turned edges with a pin. (This will enable you to pin the lower edges together more easily when you are ready to stitch the sleeve edges together.)
- 43.** Pull sleeve through lower edge of coat, having **WRONG** sides out, separating the coat sleeve from the lining sleeve. With **RIGHT** sides together, pin sleeve edges together, matching underarm seams. Remove anchoring pin. Stitch sleeve edge. **TRIM** seam.
- 44.** Turn up sleeve hem allowance. Tack hem to seam, as shown, or if you prefer, **CATCHSTITCH** sleeve hem in place.
- 45.** Turn sleeve lining to **INSIDE**; press. Press under 1/2" (1.3cm) on remaining lower edge of coat lining used for turning. **SLIPSTITCH** pressed edge of lining 1" (2.5cm) above lower edge of coat. Allow coat and sleeve lining to drop. Press up coat hem along basting. **SLIPSTITCH** front facings to hem and remaining front edges of lining to facing.

CONTINUE AS FOLLOWS FOR VIEW B

- 46.** On **INSIDE**, pin **RIGHT** back vent over **LEFT** back, matching seam lines on upper edge of vent. **SLIPSTITCH** upper edge of vent to lining. Hand-baste close to upper edge of vent through all thicknesses.
- 47.** On **OUTSIDE**, stitch across upper edge of vent, as basted; remove basting.
- 48.** **OPTIONAL** - Turn coat right side out. On **OUTSIDE**, **TOPSTITCH** front, neck, and lower edges of coat 1" (2.5cm) from finished edge.



Congrats!

You've completed your sewing adventure

SHARE YOUR LOOK



Post your pattern and tag us
[@simplicity_creative_group](#) and [#simplicitypatterns](#)
for a chance to be featured on our social media.

Look for more PDF patterns at [simplicity.com](https://www.simplicity.com)

Have a question or need help with your sewing project call us at
1-888-588-2700



Simplicity ©2024 a division of IG Design Group Americas Inc. • Atlanta, GA 30342 USA www.thedesigngroup.com • All Rights Reserved. www.simplicity.com • Made in the U.S.A. Fabriqué aux États-Unis.

To be used for individual private home use only and not for commercial or manufacturing purposes. • A usage privé seulement et non à des fins commerciales ou de production en série. • Para uso privado solamente, no se puede utilizar con propósitos de comercialización o de producción en serie.