

S3007

Simplicity®



B



A

Designed and printed in USA.

Average

MISSES' COAT AND JACKET

Suggested Fabrics: Denim, Faux Suede, Microfiber, Nylon, Poplin, Rainwear Fabric, Sateen.

Interlining: Fleece. **Lining:** Polyester, Rayon. **Interfacing:** Lightweight Fusible.

Notions: A,B: One ¾" (1.5cm) sew-on snap. **Also for A:** Two 1" (2.5cm) buttons. **Also for B:** Two ¾" (1.5cm) sew-on or heavy duty snaps.

Sizes	XS	S	M	L	XL	XXL
	4-6	8-10	12-14	16-18	20-22	24-26
European	30-32	34-36	38-40	42-44	46-48	50-52

BODY MEASUREMENTS: Select pattern size based on body measurements

Bust	29½-30½	31½-32½	34-36	38-40	42-44	46-48	Ins.
Waist	22-23	24-25	26½-28	30-32	34-37	39-41½	"
Hip-9" below waist	31½-32½	33½-34½	36-38	40-42	44-46	48-50	"
Back-neck to waist	15¼-15½	15¾-16	16¼-16½	16¾-17	17¼-17½	17¾-18	"

Coat A	45**	3%	3%	3%	4%	4%	4%	Yds.
	60**	2%	2%	3%	3%	3%	3%	"
Interlining	60"	2%	2%	2%	3%	3%	3%	"
Lining	45***	2	2	2%	2%	2%	3	"
Interfacing -	20" - 2¼ yds.							

Jacket B	45**	3	3	3%	3%	3%	4	Yds.
	60**	2%	2%	2%	3%	3%	3%	"
Interlining	60"	2	2%	2%	2%	2%	2%	"
Lining	45***	1%	1%	1%	1%	2%	2%	"
Interfacing -	20" - 2¼ yds.							

FINISHED GARMENT MEASUREMENTS (Includes Design and Wearing Ease)

A,B Bust	45	47	50%	54%	58%	62%	Ins.
A,B Waist	45	47	50%	54%	58%	62%	"
A Hip	46	48	51%	55%	59%	63%	"
Width, lower edge							
Coat A, Jacket B	45%	47%	51	55	59	63	Ins.
Finished back length from base of neck							
Coat A	29%	30	30%	31	31½	32	Ins.
Jacket B	22%	23	23%	24	24%	25	"

*with nap **without nap

Moins Facile

MANTEAU ET VESTE POUR JEUNES FEMMES

Tissus Conseillés: Denim, Simili Daim, Microfibre, Nylon, Popeline, Tissu de vêtements de pluie, Satinette. **Triplure:** Molleton. **Doublure:** Polyester, Rayonne. **Entoilage:** Thermocollant léger.

Mercerie: A,B: 1 bouton-pression de 1.5cm (à coudre). **Aussi pour A:** 2 boutons de 2.5cm. **Aussi pour B:** 2 boutons-pressions de 1.5cm (à coudre).

Tailles	TP/XS	P/S	M/M	G/L	TG/XL	TTG/XXL
Françaises	32-34	36-38	40-42	44-46	48-50	52-54
Européen	30-32	34-36	38-40	42-44	46-48	50-52

MESURES DU CORPS: Choisissez la taille du patron basée sur les mesures du corps

Poitrine	75-77	80-83	87-92	97-102	107-112	117-122	cm
Taille	56-58	61-64	67-71	76-81	87-94	99-105	"
Hanches (23cm au-dessous de la taille)							

	80-83	85-88	92-97	102-107	112-117	122-127	cm
Dos du cou à la taille	39-39.5	40-40.5	41.5-42	42.5-43	44-44.5	45-45.5	"

Manteau A	115cm*	3.3	3.3	3.4	4.1	4.1	4.2	m
	150cm*	2.6	2.6	2.7	3.2	3.2	3.3	"
Triplure	150cm	2.2	2.3	2.3	2.7	2.7	2.9	"
Doublure	115cm**	1.8	1.8	2.1	2.2	2.5	2.7	"
Entoilage -	51cm - 2.4m							

Veste B	115cm*	2.7	2.7	2.9	3.1	3.5	3.7	m
	150cm*	2.1	2.1	2.3	2.4	3.1	3.2	"
Triplure	150cm	1.8	1.9	1.9	2.4	2.4	2.5	"
Doublure	115cm**	1.6	1.6	1.7	1.7	2.2	2.3	"
Entoilage -	51cm - 2.1m							

MESURES DES VÊTEMENTS FINI (Motif et aisance de port compris)

A,B Poitrine	114	119	128	138	149	159	cm
A,B Taille	114	119	128	138	149	159	"
A Hanches	117	122	131	141	151	161	"

Largeur à l'ourlet							
Manteau A, Veste B	116	121	130	140	150	160	cm
Longueur finie - dos, votre nuque à l'ourlet							
Manteau A	75	76	77	79	80	81	cm
Veste B	57	58	60	61	62	64	"

*avec sens **sans sens



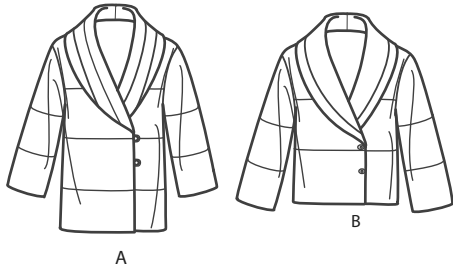
A



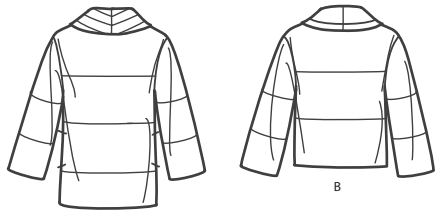
B

Simplicity®

Thank you for purchasing this Simplicity pattern.
We made every effort to provide you with a high quality product.



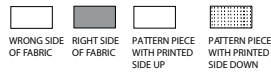
A



B

- 1 Front-A,B
- 2 Back-A,B
- 3 Pocket-A
- 4 Loop-A
- 5 Upper Collar-A,B
- 6 Undercollar-A,B
- 7 Front Facing-A,B
- 8 Sleeve-A,B
- 9 Front Lining-A,B
- 10 Inside Pocket-A,B
- 11 Back Lining-A,B

Cutting Layouts

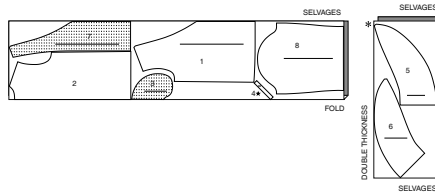


POSITION OF PATTERN PIECES MAY VARY
SLIGHTLY ACCORDING TO YOUR PATTERN SIZE

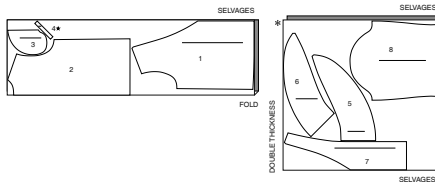
COAT A

USE PIECES 1 2 3 4 5 6 7 8
CUT ONE OF PIECE 4

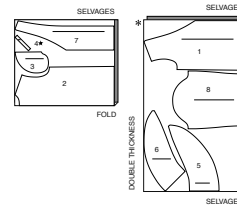
45" (115CM)
WITH NAP
SIZES XS S M



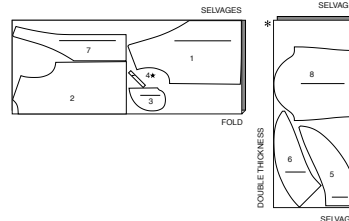
45" (115CM)
WITH NAP
SIZES L XL XXL



60" (150CM)
WITH NAP
SIZES XS S M



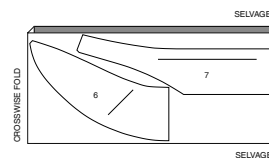
60" (150CM)
WITH NAP
SIZES L XL XXL



INTERFACING A

USE PIECES 6 7

20" (51CM)
ALL SIZES



General Directions

The Pattern

SYMBOLS

- GRAIN LINE Place on straight grain of fabric parallel to selvage
- PLACE SOLID LINE on fold of fabric.
- CENTER FRONT OR BACK of garment.
- NOTCHES
- DOTS
- CUTTING LINE
- LENGTHEN OR SHORTEN LINES

SEAM ALLOWANCE: 5/8" (1.5cm) unless otherwise stated is included but not printed on MULTI-SIZE PATTERNS. Mark your size with colored felt tip pen. See chart on tissue for how to use MULTI-SIZE PATTERNS.

ADJUST IF NEEDED

Make adjustments before placing pattern on fabric.

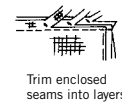
TO LENGTHEN:
Cut pattern between lengthen or shorten lines. Spread pattern evenly, the amount needed and tape to paper.

TO SHORTEN:
At lengthen or shorten lines, make an even pleat taking up amount needed. Tape in place.

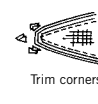
When lengthen or shorten lines are not given, make adjustments at lower edge of pattern.

Sewing

- SEW garment following **Sewing Directions**.
- PIN or machine-baste seams matching notches.
- STITCH 5/8" (1.5 cm) seams unless otherwise stated.
- PRESS seams open unless otherwise indicated clipping when necessary so seams will lie flat.
- TRIM seams to reduce bulk, as shown below.



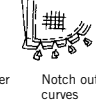
Trim enclosed seams into layers



Trim corners



Clip inner curves



Notch outer curves

Cutting/Marking

BEFORE CUTTING:

PRESS pattern pieces with a warm dry iron. PRE-SHRINK fabric by pre-washing washables or steam-pressing non-washables.

CIRCLE your cutting layout.

PIN pattern to fabric as shown in Cutting Layouts.

• FOR DOUBLE THICKNESS: Fold fabric with RIGHT sides together.

• FOR SINGLE THICKNESS: Place fabric RIGHT side up.

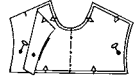
• FOR PILE, SHADED OR ONE WAY DESIGN FABRICS: Use "with nap" layouts

AFTER CUTTING:

Transfer markings to WRONG side of fabric before removing pattern. Use pin and chalk method or dressmaker's tracing paper and wheel.

To Quick Mark:

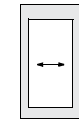
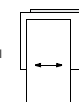
- Snip edge of fabric to mark notches, ends of fold lines and center lines.
- Pin mark dots.



SPECIAL CUTTING NOTES

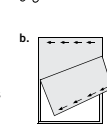
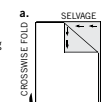
★ If layout shows a piece extending past fold, cut out all pieces except piece that extends.

Open out fabric to single thickness. Cut extending piece on RIGHT side of fabric in position shown.



✱ Mark small arrows along both selvages indicating direction of nap or design. Fold fabric crosswise with RIGHT sides together, and cut along fold (a).

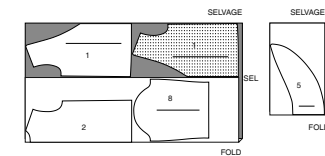
Turn one fabric layer around so arrows on both layers go in the same direction. Place RIGHT sides together (b).



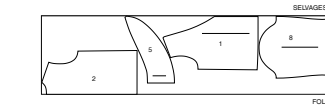
INTERLINING A

USE PIECES 1 2 5 8

60" (150CM)
SIZES XS S M



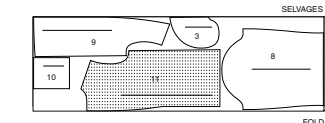
60" (150CM)
SIZES L XL XXL



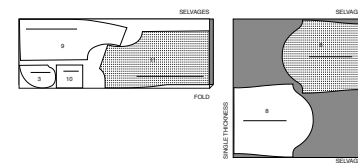
LINING A

USE PIECES 3 8 9 10 11

45" (115CM)
WITHOUT NAP
SIZES XS S



45" (115CM)
WITHOUT NAP
SIZES M L XL XXL

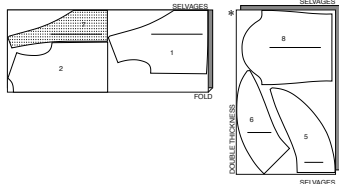
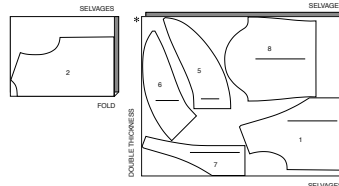
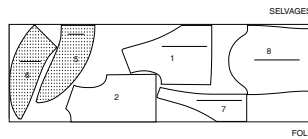
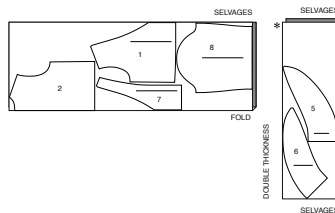


S3007

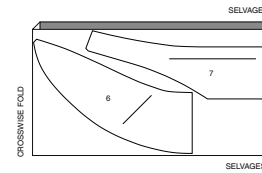
2 of 4

JACKET B

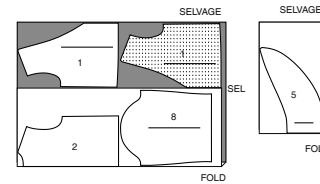
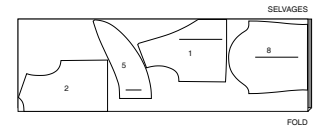
USE PIECES 1 2 5 6 7 8

45" (115CM)
WITH NAP
SIZES XS S M45" (115CM)
WITH NAP
SIZES L XL XXL60" (150CM)
WITH NAP
SIZES XS S M L60" (150CM)
WITH NAP
SIZES XL XXL**INTERFACING B**

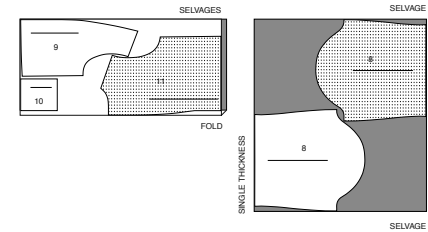
USE PIECES 6 7

20" (51CM)
ALL SIZES**INTERLINING B**

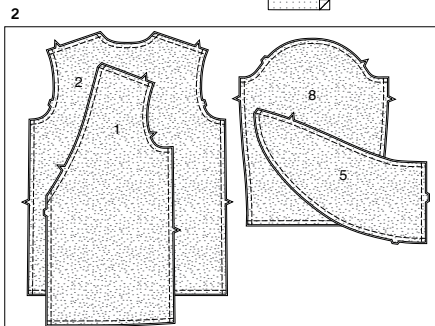
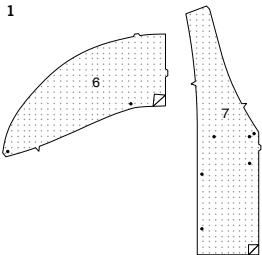
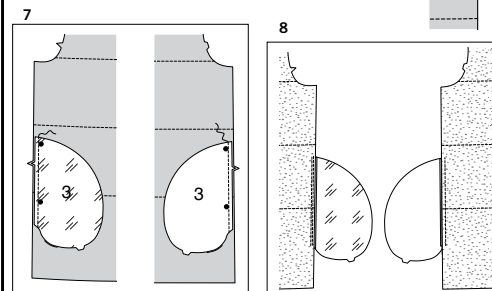
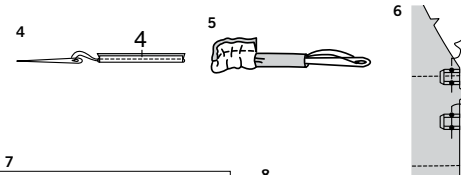
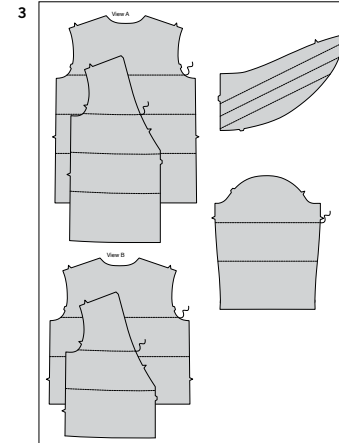
USE PIECES 1 2 5 8

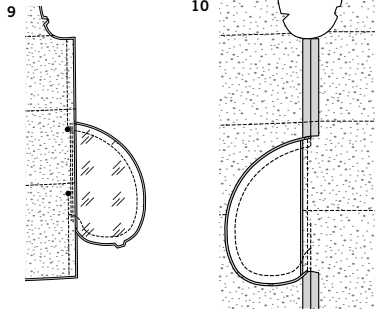
60" (150CM)
SIZES XS S M60" (150CM)
SIZES L XL XXL**LINING B**

USE PIECES 8 9 10 11

45" (115CM)
WITHOUT NAP
ALL SIZES

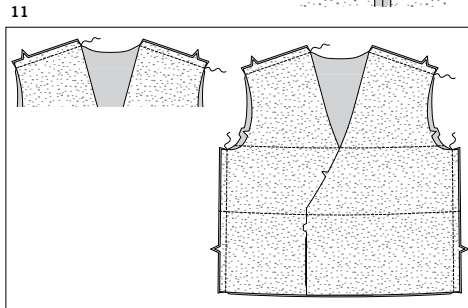
SEWING TUTORIALS

Build your skills viewing short, easy-to-follow videos at
[simplicity.com/sewingtutorials](https://www.simplicity.com/sewingtutorials)**Sewing Directions****FABRIC KEY**Read **General Directions** on page 1 before you begin.Sewing methods in **BOLD TYPE** have Sewing Tutorial Video available.
Scan QR CODE to watch videos:**CATCH STITCH** – See **Hand Stitching**: "hand sewing a catch stitch" video.**EASE** – See **Gathering**: "sewing two row gathers" video.**SET IN SLEEVE** – See **Armholes/Sleeves**: "sewing a set in sleeve" video.**SLIPSTITCH** – See **Hand Stitching**: "how to slip stitch" video.**STAYSTITCH** – See **Machine Stitches**: "how to do stay stitching" video.**TOPSTITCH** – See **Machine Stitches**: "how to topstitch" video.**TRIM SEAM** – See **Seams**: "how to trim, clip and layer seams" video.**UNDERSTITCH** – See **Machine Stitches**: "how to understitch" video.**PATTERN PIECES WILL BE IDENTIFIED BY NUMBERS THE FIRST TIME THEY ARE USED.****STITCH 5/8" (1.5CM) SEAMS WITH RIGHT SIDES TOGETHER UNLESS OTHERWISE STATED.****COAT A, JACKET B****NOTE:** Trim 1" (2.5cm) from lower edge of **SLEEVE (8)** lining before stitching seams.**INTERFACING****1.** Pin interfacing to **WRONG** side of **UNDERCOLLAR (6)** and **FRONT FACING (7)**. Fuse in place following manufacturer's directions.**INTERLINING****2.** Pin interlining to **WRONG** side of **FRONT (1)**, **BACK (2)**, **UPPER COLLAR (5)**, and **SLEEVE (8)** sections. Baste 1/2" (1.3cm) from raw edges.**3.** On **OUTSIDE**, **TOPSTITCH** along stitching lines on front, back, and sleeve sections, and along stitching lines for View A upper collar.**BUTTON LOOPS AND POCKET A****4.** Fold **LOOP (4)** in half, lengthwise, with **RIGHT** sides together. Stitch 1/4" (6mm) from fold edge, stretching loop while stitching. With a needle, attach a strong thread to one end of loop.**5.** Draw needle eye forward, through fold, turning loop **RIGHT** side out.**6.** Cut loop in half. On **OUTSIDE**, pin loops to front edge, placing ends over small dots with raw edges even. Baste.**7.** With **RIGHT** sides together, pin **POCKET (3)** lining to front and fabric pocket to back, matching large dots, having raw edges even. Stitch in a 3/8" (1cm) seam.**8.** **UNDERSTITCH** the pocket lining. Press seams toward pockets, pressing pockets out.



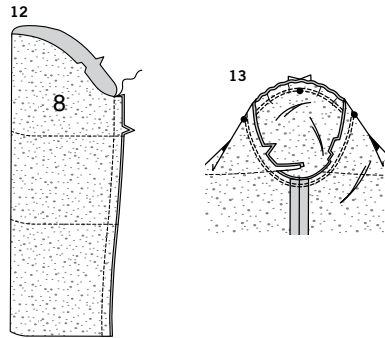
9. Pin front to back at side edges, matching large dots. Stitch side edges and pockets, leaving an opening between the large dots. Stitch pocket sections together between the side seams.

10. Clip coat back seam allowance at ends of pocket, as shown. Press seam open above and below clips. Press pocket toward front.



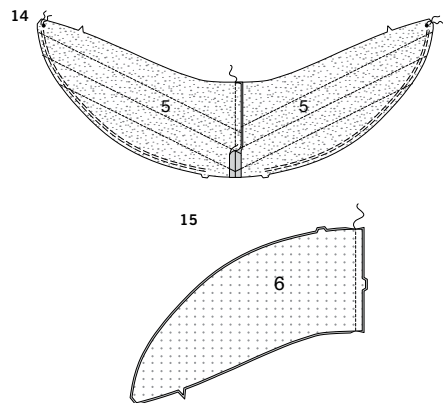
CONTINUE AS FOLLOWS FOR BOTH VIEWS

11. Stitch front to back at shoulder edges, and side edges for View B.



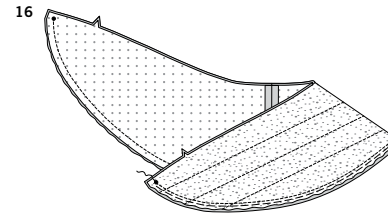
12. Stitch underarm edges of sleeve.

13. To **SET IN SLEEVE**, turn sleeve RIGHT side out. Hold coat WRONG side out with armhole toward you. With RIGHT sides together, pin sleeve to armhole edge with center small dot at shoulder seam, matching underarm seams, notches and remaining small dots. Baste. Stitch. Stitch again 1/8" (3mm) from first stitching. Trim seam below notches close to stitching. Press only the seam allowance, pressing seam toward sleeve, shrinking out fullness.

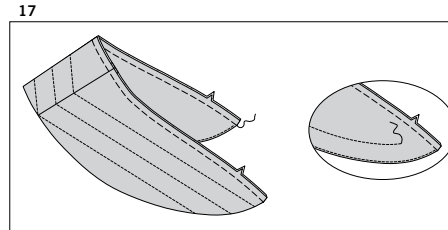


14. Stitch center back edges of upper collar. **EASE** upper collar between small dot and notch.

15. Stitch center back edges of UNDERCOLLAR (6).

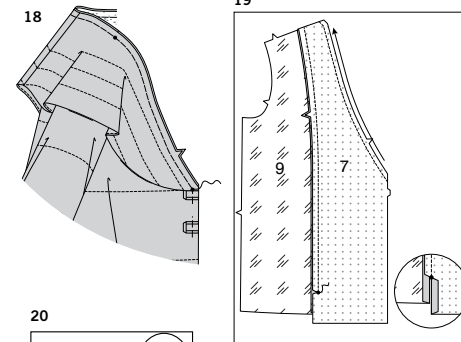


16. With RIGHT sides together and raw edges even, pin upper collar to undercollar, matching double notches and small dots, pulling up ease stitches to fit. Stitch double notched edge between the small dots. **TRIM SEAM.**



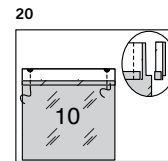
17. **UNDERSTITCH** the undercollar. Turn collar; press. Baste raw edges together.

FOR VIEW B – TOPSTITCH along stitching line.

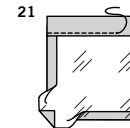


18. Pin collar (undercollar side) to coat at neck edge, matching small dots and notches, placing inner small dot at shoulder seam. Baste.

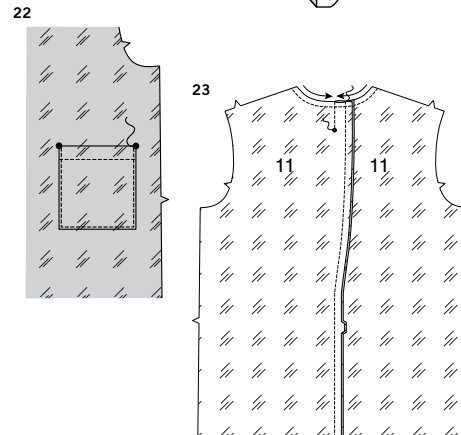
19. **STAYSTITCH** neck edge of FRONT FACING (7). With RIGHT sides together and raw edges even, pin front facing to FRONT LINING (9) along side front edge, matching small dots and notches. Stitch from upper edge to small dot, back-stitching at dot to reinforce the seam. Clip only facing seam allowance to small dot. Press seam toward lining, pressing under 5/8" (1.5cm) on inner edge of facing below clip, as shown.



20. Press under 1/4" (6mm) on upper edge of INSIDE POCKET (10). Turn upper edge to OUTSIDE along fold line, forming facing. Stitch along seam line on raw edges. Trim seam allowance in the facing area to 1/4" (6mm).

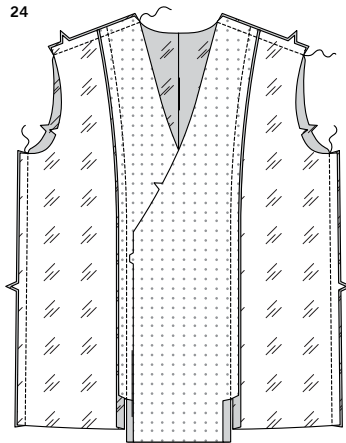


21. Turn corners RIGHT side out, turning facing to the WRONG side; press, pressing under raw edges along stitching. Stitch facing close to inner edge.

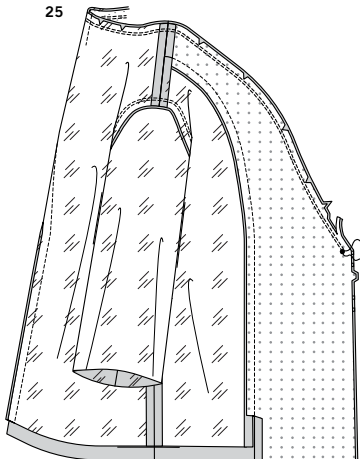


22. On OUTSIDE, pin pocket to front lining, matching large dots. Stitch close to side and lower edges.

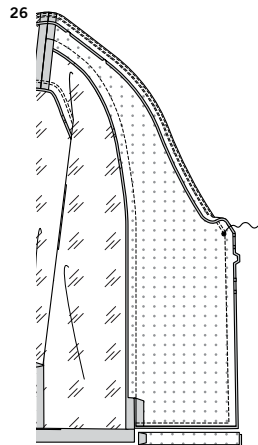
23. **STAYSTITCH** neck edge of BACK LINING (11). Stitch center back edges. To form pleat, stitch along broken line from neck edge to small dot, back-stitching at dot to reinforce the seam. Press seam toward LEFT back.



24. With RIGHT sides together and raw edges even, pin front lining to back lining at side and shoulder edges, matching notches. Stitch.

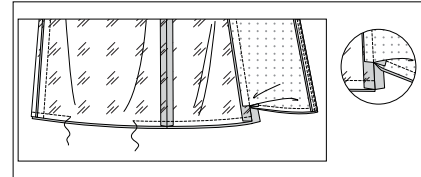


25. Stitch underarm edges of sleeve lining and **SET IN SLEEVE** in the same manner as coat.
Clip neck edge of lining to stitching along curves. With RIGHT sides together and raw edges even, pin lining to coat along neck edge (over collar), matching small dots and notches. Baste; stitch as basted. Stitch again 1/8" (3mm) from previous stitching within the seam allowance. **TRIM SEAM.**



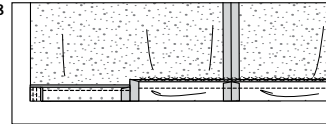
26. **UNDERSTITCH** the lining and facing as far as possible. With RIGHT sides together, pin facing to coat along front and lower edge. Stitch. Trim lower edge of facing close to stitching; trim coat to within 5/8" (1.5cm) of inner edge of facing.

27



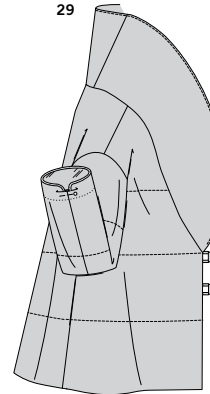
27. **UNDERSTITCH** front edge of facing as far as possible. Pin lower edge of coat and lining together, matching centers back and side seams, keeping the front facing out of the way (a pleat will form in the coat.)
Stitch lower edges between facing seams in 1/2" (1.3cm) seam, leaving an opening at lower edge of back to turn coat.

28



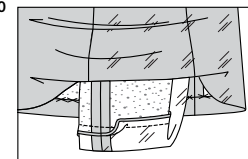
28. With the WRONG side of coat facing you, turn up hem allowance on lower edge of coat. **CATCH STITCH** coat hem in place, being careful not to catch in opening edge of lining in back.

29



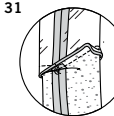
29. Turn coat RIGHT side out; press. Slip sleeve in place. To match seams correctly when working on WRONG side of garment, turn seam allowance on sleeve edges of coat and lining toward each other at underarm seams, as shown. Anchor the turned edges with a pin.

30



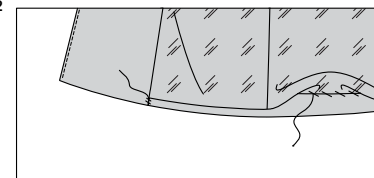
30. Pull sleeve through the opening in lower edge of garment, having WRONG sides out, separating the coat sleeve from the lining sleeve. With RIGHT sides together, pin sleeve edges together, matching underarm seams. Remove anchoring pin. Stitch sleeve edge in a 1/2" (1.3cm) seam. **TRIM SEAM.**

31



31. Turn up sleeve hem allowance. Tack hem to seam, as shown. If you prefer, **CATCH-STITCH** hem in place. Turn sleeve lining to INSIDE; press.

32



32. Press under 1/2" (1.3cm) on remaining lower edge of coat lining. **SLIPSTITCH** pressed edge of lining 1" (2.5cm) above lower edge of coat. Allow coat and sleeve lining to drop. Press folded edges in place. **SLIPSTITCH** front facing to hem and remaining front edges of lining to facing.

FRONT CLOSURE A

33. Separate one 5/8" (1.5cm) snap. Hand-sew socket section to LEFT front edge at small dot, and knob section to RIGHT facing at inner small dot.
Sew buttons to LEFT front at inner large dots.

FRONT CLOSURE B

34. Separate three snaps. Hand-sew socket sections to LEFT front at small dots, and knob sections to RIGHT facing at small dots.
If you prefer, apply two heavy-duty snaps for outer snaps following manufacturer's instructions.



Congrats!

You've completed your sewing adventure

SHARE YOUR LOOK



Post your pattern and tag us
[@simplicity_creative_group](#) and [#simplicitypatterns](#)
for a chance to be featured on our social media.

Look for more PDF patterns at [simplicity.com](https://www.simplicity.com)

Have a question or need help with your sewing project call us at
1-888-588-2700



Simplicity ©2024 a division of IG Design Group Americas Inc. • Atlanta, GA 30342 USA www.thedesigngroup.com • All Rights Reserved. www.simplicity.com • Made in the U.S.A. Fabriqué aux États-Unis.

To be used for individual private home use only and not for commercial or manufacturing purposes. • A usage privé seulement et non à des fins commerciales ou de production en série. • Para uso privado solamente, no se puede utilizar con propósitos de comercialización o de producción en serie.