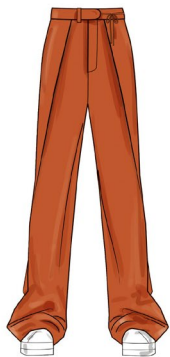


S3006

**Simplicity**



A



B

Designed and printed in USA.

Average

**MISSES' PANTS**

**Suggested Fabrics:** Cotton Blends, Flannel, Lightweight Twill, Linen Blends, Stretch Wovens. **Lining:** Cotton Blends, Polyester Blends. **Interfacing:** Lightweight Fusible.

**Notions:** A,B: One 7" (18cm) zipper (adjust to fit), one hook and bar.

Sizes	8	10	12	14	16	18	20	22	24	26
European	34	36	38	40	42	44	46	48	50	52

**BODY MEASUREMENTS: Select pattern size based on body measurements**

Bust	31½	32½	34	36	38	40	42	44	46	48	Ins.
Waist	24	25	26½	28	30	32	34	37	39	41½	"
Hip-9" below waist	33½	34½	36	38	40	42	44	46	48	50	"
Back-neck to waist	15¾	16	16¼	16½	16¾	17	17¼	17½	17¾	17¾	"

**Lining A,B** 45\*\*\* - ½ yd.

**Interfacing A,B - 20"** - ¾ yd.

Pants A	45**	2½	2½	2½	2½	2½	2½	2½	3	3½	Yds.
	60**	1¾	1¾	1¾	1¾	2¼	2¼	2½	2½	2½	"
Pants B	45**	2½	2½	2½	2½	2½	2½	3	3½	3½	Yds.
	60**	1¾	1¾	1¾	1¾	2¼	2½	2½	2½	2½	"

**FINISHED GARMENT MEASUREMENTS (Includes Design and Wearing Ease)**

A,B Waist	26	27	28½	30½	32½	34½	36½	38½	40½	42½	Ins.
A,B Hip	36	37	38½	40½	42½	44½	46½	48½	50½	52½	"
Width, each leg											
Pants A,B	20½	21	21¾	22½	23¼	24	24¾	25½	26¼	27½	Ins.
Finished side length from waist											
Pants A,B	42¾	43	43¾	43¾	43¾	44	44¾	44¾	44¾	45	Ins.

\*with nap \*\*without nap

Moins Facile

**PANTALONS POUR JEUNES FEMMES**

**Tissu Conseillés:** Cotonnades, Flanelle, Twill léger, Lin mélangés, Tissus tissés extensibles. **Doublure:** Cotonnades, Mélanges de polyester. **Entoilage:** Thermocollant léger.

**Mercerie:** A,B: 1 fermeture à glissière de 18cm (adaptez pour ajuster), 1 crochet pour pantalon.

Tailles	8	10	12	14	16	18	20	22	24	26
Françaises	36	38	40	42	44	46	48	50	52	54
Europèen	34	36	38	40	42	44	46	48	50	52

**MESURES DU CORPS: Choisissez la taille du patron basée sur les mesures du corps**

Poitrine	80	83	87	92	97	102	107	112	117	122	cm
Taille	61	64	67	71	76	81	87	94	99	106	"
Hanches (23cm au-dessous de la taille)											
	85	88	92	97	102	107	112	117	122	127	cm
Dos du cou à la taille	40	40.5	41.5	42	42.5	43	44	44	44.5	44.5	"

**Doublure A,B** 115cm\*\* - 0.5m

**Entoilage A,B - 51cm - 0.7m**

Pantalon A	115cm*	2.3	2.3	2.3	2.3	2.4	2.4	2.6	2.6	2.7	2.9	m
	150cm*	1.6	1.6	1.6	1.7	2.1	2.1	2.2	2.2	2.3	2.4	"
Pantalon B	115cm*	2.3	2.3	2.3	2.3	2.4	2.4	2.6	2.7	2.9	2.9	m
	150cm*	1.6	1.6	1.6	1.7	2.1	2.2	2.2	2.3	2.3	2.4	"

**MESURES DES VÊTEMENTS FINI (Motif et aisance de port compris)**

A,B Taille	66	69	72	77	83	88	93	98	103	108	cm
A,B Hanches	91	94	98	103	108	113	118	123	128	133	"
Largeur, chaque jambe											
Pantalon A,B	52	53	55	57	59	61	63	65	68	70	cm
Longueur finie - côté, taille à l'ourlet											
Pantalon A,B	109	109	110	110	111	112	112	113	114	114	cm

\*avec sens \*\*sans sens



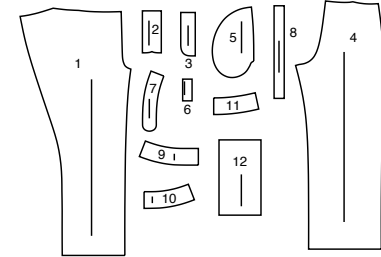
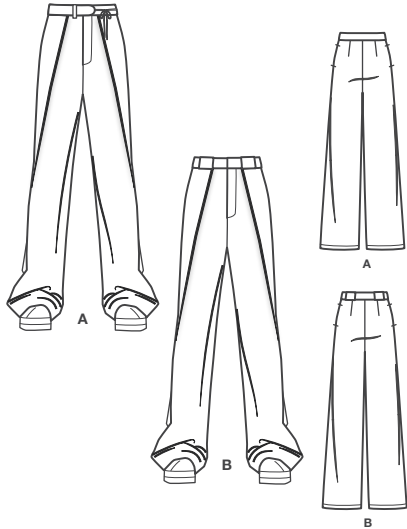
A



B

# Simplicity®

Thank you for purchasing this Simplicity pattern. We made every effort to provide you with a high quality product.



- 1 Front-A,B
- 2 Right Fly-A,B
- 3 Left Fly Facing-A,B
- 4 Back-A,B
- 5 Pocket-A,B
- 6 Carrier-A
- 7 Tab-A
- 8 Tie End-A
- 9 Right Front Waistband-A,B
- 10 Left Front Waistband-A,B
- 11 Back Waistband-A,B
- 12 Carrier-B

## General Directions

### The Pattern

- SYMBOLS**
- GRAIN LINE Place on straight grain of fabric parallel to selvage
  - PLACE SOLID LINE on fold of fabric.
  - CENTER FRONT OR BACK of garment.
  - NOTCHES
  - DOTS
  - CUTTING LINE
  - LENGTHEN OR SHORTEN LINES

SEAM ALLOWANCE: 5/8" (1.5cm) unless otherwise stated is included but not printed on MULTI-SIZE PATTERNS. Mark your size with colored felt tip pen. See chart on tissue for how to use MULTI-SIZE PATTERNS.

**ADJUST IF NEEDED**  
Make adjustments before placing pattern on fabric.

**TO LENGTHEN:**  
Cut pattern between lengthen or shorten lines. Spread pattern evenly, the amount needed and tape to paper.

**TO SHORTEN:**  
At lengthen or shorten lines, make an even pleat taking up amount needed. Tape in place.

When lengthen or shorten lines are not given, make adjustments at lower edge of pattern.

### Cutting/Marking

**BEFORE CUTTING:**  
PRESS pattern pieces with a warm dry iron. PRE-SHRINK fabric by pre-washing washables or steam-pressing non-washables.

CIRCLE your cutting layout.

PIN pattern to fabric as shown in Cutting Layouts.

• FOR DOUBLE THICKNESS: Fold fabric with RIGHT sides together.

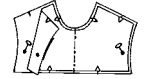
• FOR SINGLE THICKNESS: Place fabric RIGHT side up.

• FOR PILE, SHADED OR ONE WAY DESIGN FABRICS: Use "with nap" layouts

**AFTER CUTTING:**  
Transfer markings to WRONG side of fabric before removing pattern. Use pin and chalk method or dressmaker's tracing paper and wheel.

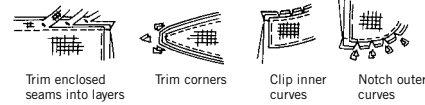
#### To Quick Mark:

- Snip edge of fabric to mark notches, ends of fold lines and center lines.
- Pin mark dots.



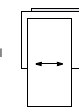
### Sewing

- SEW garment following Sewing Directions.
- PIN or machine-baste seams matching notches.
- STITCH 5/8" (1.5 cm) seams unless otherwise stated.
- PRESS seams open unless otherwise indicated clipping when necessary so seams will lie flat.
- TRIM seams to reduce bulk, as shown below.

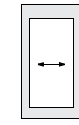


### SPECIAL CUTTING NOTES

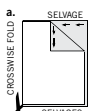
★ If layout shows a piece extending past fold, cut out all pieces except piece that extends.



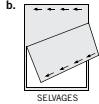
Open out fabric to single thickness. Cut extending piece on RIGHT side of fabric in position shown.



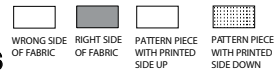
✱ Mark small arrows along both selvages indicating direction of nap or design. Fold fabric crosswise with RIGHT sides together, and cut along fold (a).



Turn one fabric layer around so arrows on both layers go in the same direction. Place RIGHT sides together (b).



## Cutting Layouts

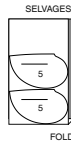


POSITION OF PATTERN PIECES MAY VARY SLIGHTLY ACCORDING TO YOUR PATTERN SIZE

### LINING A, B

USE PIECE 5

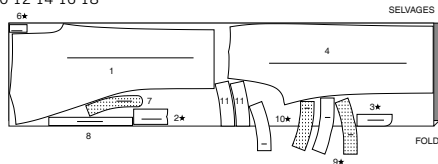
45" (115CM) WITH NAP  
ALL SIZES



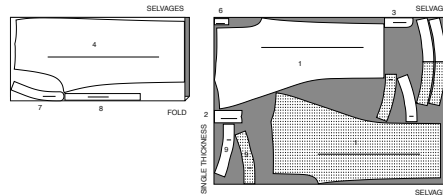
### PANTS A

USE PIECES 1 2 3 4 6 7 8 9 10 11

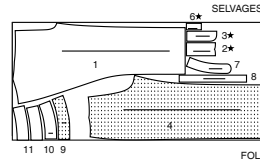
45" (115CM) WITH NAP  
SIZES 8 10 12 14 16 18



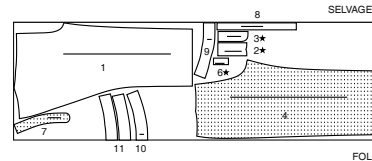
45" (115CM) WITH NAP  
SIZES 20 22 24 26



60" (150CM) WITH NAP  
SIZES 8 10 12 14



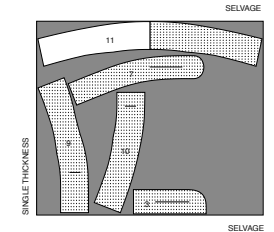
60" (150CM) WITH NAP  
SIZES 16 18 20 22 24 26



### INTERFACING A

USE PIECE 3 7 9 10 11

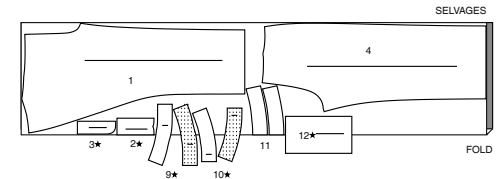
20" (51CM) ALL SIZES



### PANTS B

USE PIECES 1 2 3 4 9 10 11 12

45" (115CM) WITH NAP  
SIZES 8 10 12 14 16 18

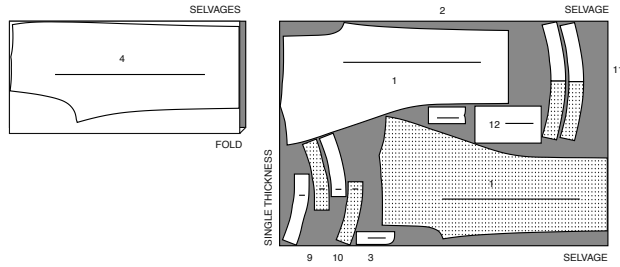


CUTTING LAYOUTS CONTINUED ON PAGE 2

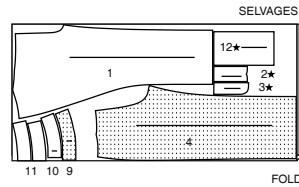
# S3006

2 of 4

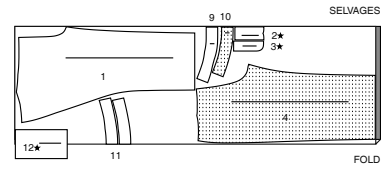
45" (115CM)  
WITH NAP  
SIZES 20 22 24 26



60" (150CM)  
WITH NAP  
SIZES 8 10 12 14

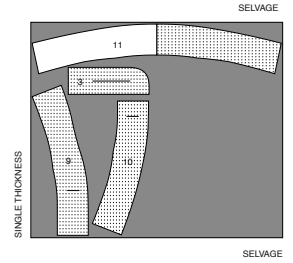


60" (150CM)  
WITH NAP  
SIZES 16 18 20 22 24 26



## INTERFACING B USE PIECE 3 9 10 11

20" (51CM)  
ALL SIZES

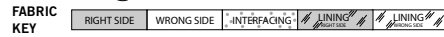


### SEWING TUTORIALS



Build your skills viewing short, easy-to-follow videos at [simplicity.com/sewingtutorials](http://simplicity.com/sewingtutorials)

## Sewing Directions



Read **General Directions** on page 1 before you begin.  
Sewing methods in **BOLD TYPE** have Sewing Tutorial Video available.  
Scan **QR CODE** to watch videos:

- DART** - See Darts: "sewing flat dart" video.
- BELT LOOP/CARRIER** - See Loops and Straps: "how to sew belt loops" video.
- EDGE STITCH** - See Machine Stitches: "how to edgestitch" video.
- FINISH** - See Seams: "how to finish seam allowances" video.
- STITCH IN THE DITCH** - See Machine Stitches: "how to stitch in the ditch" video.
- UNDERSTITCH** - See Machine Stitches: "how to understitch" video.
- FLY FRONT ZIPPER** - See Zipper: "sewing a fly front zipper" video.

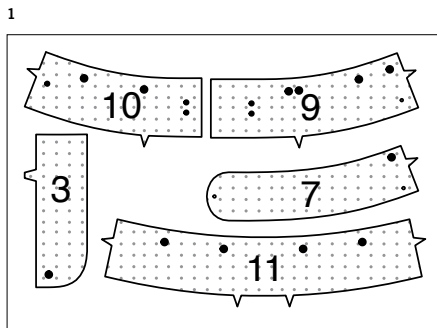
**EASE STITCH** - Stitch along seamline, using long machine stitches. Pull thread ends when adjusting to fit.

**PATTERN PIECES WILL BE IDENTIFIED BY NUMBERS THE FIRST TIME THEY ARE USED. STITCH SEAMS WITH RIGHT SIDES TOGETHER UNLESS OTHERWISE STATED.**

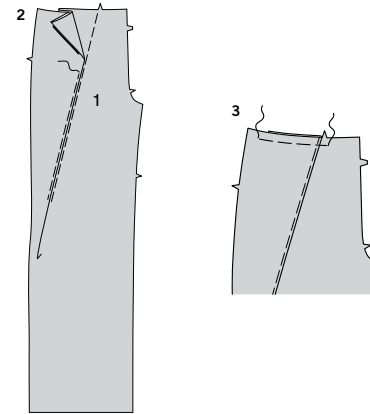
**NOTE:** Under each sub-heading, the first view will be illustrated, unless otherwise illustrated.

### PANTS A, B INTERFACING

- Fuse INTERFACING to wrong side of each matching FABRIC section, following manufacturer's instructions.



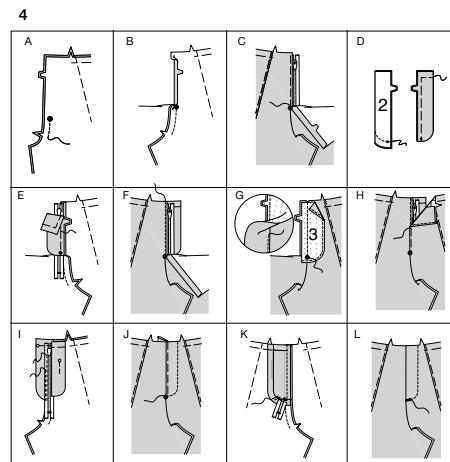
### FRONT



- To make pleat on FRONT (1), on OUTSIDE, fold along solid line. Bring fold to broken line; pin. Baste. Baste across upper edge.
- EASE STITCH** upper edge of pants front, from side edge to notch.

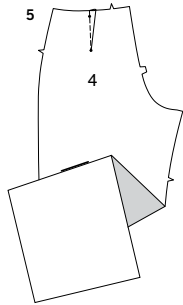
### 4. Construct fly front as follows:

- A**-Stitch FRONT (1) sections together at center front between large dot and notch.
- B**-Turn in right front opening edge along foldline; press.
- C**-Place closed zipper (face up) under right front opening edge, having pressed edge close to zipper teeth and zipper stop 3/4" (2cm) below upper edge. Using a zipper foot, baste close to pressed edge.
- D**-With right sides together, fold RIGHT FLY (2) along foldline, matching dots. Stitch lower edge. Trim. Turn. Press. Baste raw edges.
- E**-On inside, pin right fly to right front opening edge (over zipper), matching notches and small dots, having raw edges even. Baste along previous basting for zipper.
- F**-On outside, using a zipper foot, stitch close to pressed edge of front through all layers.
- G-FINISH** outer edge of LEFT FLY FACING (3). Pin fly facing to left front opening edge, matching notches and large dots. Stitch, ending at large dot. Trim. **UNDERSTITCH** fly facing. Turn facing to inside.
- H**-Lap left front over right, matching centers. Baste close to edge through all thicknesses.
- I**-Pin right fly out of the way. Open out fly facing. Pin remaining zipper tape to fly facing, keeping left front free. Using a zipper foot, stitch in place close to zipper teeth and along center of zipper tape.
- J**-Turn facing down. On outside, stitch left front along stitching line, keeping right fly free.
- K**-Turn right fly back in place. On inside, hand tack fly and facing together at lower edge, as shown. Trim away excess zipper tape even with lower edge of fly, if needed.
- L**-If desired, on outside, machine-stitch a bar tack across lower end of fly through all thicknesses.

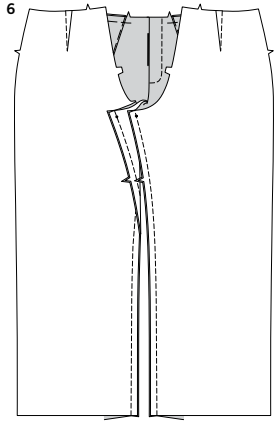


**S3006**

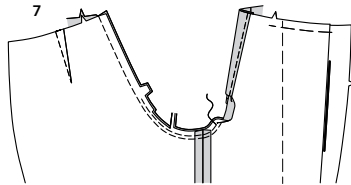
3 of 4

**BACK**

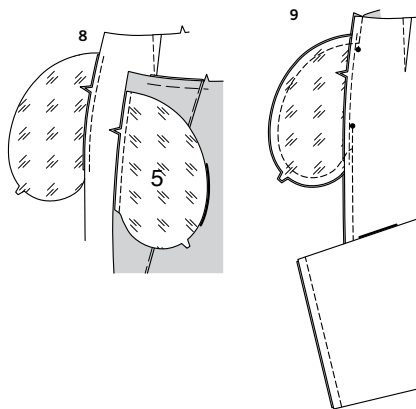
5. Make **DART** in BACK (4); press toward center.



6. Stitch front to back at inner leg edges, stretching back to fit front between notch and small dot.

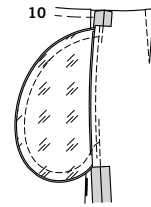


7. Stitch remainder of crotch seam to notch in front. Stitch again  $1/4$ "(6mm) away in seam allowance along curve as shown. Trim close to second stitching.

**POCKETS AND SIDE SEAMS**

8. Stitch one **POCKET** (5) section to each front and back section at each side in a  $3/8$ "(1cm) seam. Press seams toward pockets.

9. Pin front to back at sides. Stitch, leaving free between large dots. Stitch pocket edges together to side seams.



10. Clip back seam allowances above and below pockets. Turn pockets toward front along seamlines; press.

**CARRIERS VIEW A**

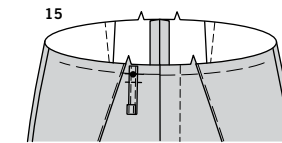
11. Fold **CARRIER** (6) in half, lengthwise with **WRONG** sides together. Press, setting in a crease.

12. Open out long edges of carrier and turn them to **WRONG** side, so that they meet at the crease. Press.

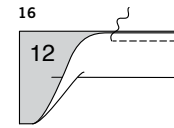


13. Fold carrier in half lengthwise, bringing pressed edges together. Stitch close to both long edges.

14. Turn in  $5/8$ "(1.5cm) on one end; press.



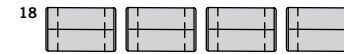
15. Pin carrier to upper edge of pants, centering over large dot having raw edges even; baste. Stitch carrier to pants  $1/2$ "(1.3cm) below basting.

**VIEW B**

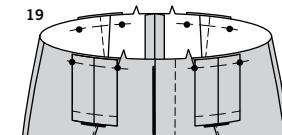
16. With **RIGHT** sides together, fold **CARRIER** (12) in half lengthwise. Stitch long edges; trim seams.



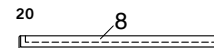
17. Turn carrier **RIGHT** side out, bringing seam to center; press.



18. Cut carriers into four sections, each  $3-1/4$ "(8cm) long. Baste raw edges.

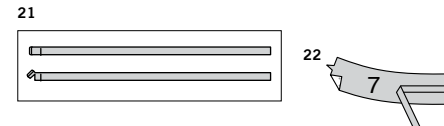


19. With **RIGHT** sides together, pin one end of each carrier to pants front and back between large dots, having raw edges even; baste.

**WAISTBAND****VIEW A**

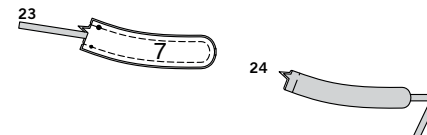
20. Fold **TIE END** (8) sections in half lengthwise, **RIGHT** sides together. Stitch in  $3/8$ "(1cm) seam, leaving end with dot free. Trim seam.

21. Turn **RIGHT** side out; press. Baste raw edges.

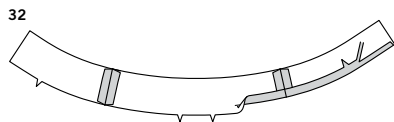
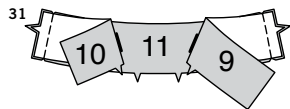
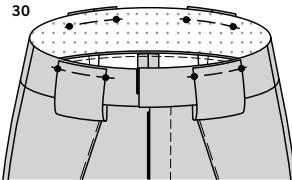
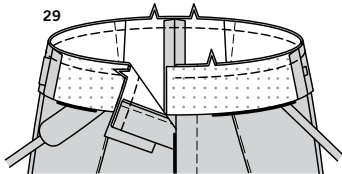
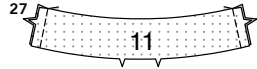
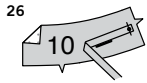


22. Trim seam on one tie end section to  $3/8$ "(1cm). On outside, pin this tie end to interfaced **TAB** (7) section, matching small dots, having raw edges even. Baste. (Uninterfaced tab section will be used as facing. Save remaining tie end.)

23. With **RIGHT** sides together, pin tab **FACING** (7) to tab, matching dots. Stitch in  $3/8$ "(1cm) seam, leaving end with notch free. Trim seams.



24. Turn tab **RIGHT** side out, turning tie end out; press. Baste notched edges.



**25.** On outside, pin tab to interfaced RIGHT FRONT WAISTBAND (9) at side, matching large and small dots, having raw edges even. (Uninterfaced right front waistband section will be used as facing.)

**26.** On outside, pin remaining tie end to interfaced LEFT FRONT WAISTBAND (10) section at side, matching small dots, having raw edges even. Baste. (Uninterfaced left front waistband section will be used as facing.)

**27.** With RIGHT sides together, stitch interfaced right front waistband and interfaced left front waistband sections to interfaced BACK WAISTBAND (11) section at sides.

#### VIEW B

**28.** With RIGHT sides together, stitch interfaced RIGHT FRONT WAISTBAND (9) and interfaced LEFT FRONT WAISTBAND (10) sections to interfaced BACK WAISTBAND (11) section at sides. (Uninterfaced waistband sections will be used as facings.)

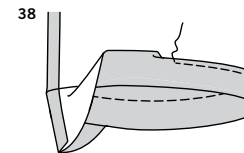
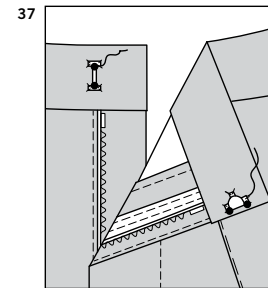
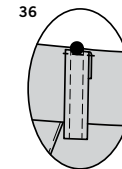
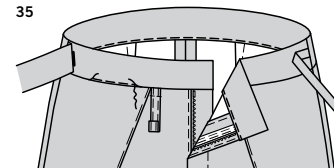
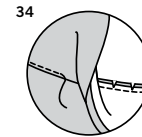
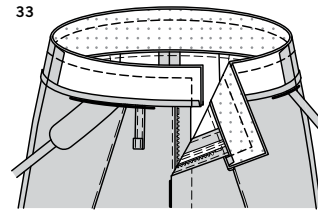
#### VIEWS A, B

**29.** With RIGHT sides together, pin waistband to upper edge of pants, matching centers and side seams. Adjust ease; stitch. Trim seams; press toward waistband, turning waistband up.

**30. FOR VIEW B:** Turn carriers up over waistband. Pin to upper edge of waistband between large dots, having raw edges even; baste.

**31.** Stitch right front waistband FACING (9) and left front waistband FACING (10) to back waistband FACING (11) at sides.

**32.** Press under 5/8" (1.5cm) on lower edge of facing. Trim pressed edge to 3/8" (1cm).



**33.** With RIGHT sides together, pin facing to waistband, matching centers and side seams. Stitch ends and upper edge; trim seams.

**34. UNDERSTITCH** facing as far as possible.

**35.** Turn facing to inside, having pressed edge just over seam; press. Working on the RIGHT side of the fabric, "STITCH-IN-THE-DITCH", (in the groove where the facing joins the fabric), being sure to catch in the underneath layer of facing in the stitching.

**36. FOR VIEW A:** Turn carrier up, as shown. Pin to upper edge of waistband, centering over large dots, having pressed ends even with waistband. **EDGESTITCH** in place.

#### FINISHING HOOK AND BAR CLOSURE

**37.** On inside, sew hook closure to end of left waistband at small dots. On outside, sew bar closure to end of right waistband at small dots, opposite hook closure.

#### HEMS

**38.** Press up 1-1/4" (3.2cm) hem on lower edge of pants. Press under 1/4" (6mm) on raw edge. Stitch close to inner pressed edge.



# Congrats!

You've completed your sewing adventure

---

**SHARE  
YOUR** LOOK



Post your pattern and tag us  
[@simplicity\\_creative\\_group](#) and [#simplicitypatterns](#)  
for a chance to be featured on our social media.

Look for more PDF patterns at [simplicity.com](http://simplicity.com)

Have a question or need help with your sewing project call us at  
1-888-588-2700



Simplicity ©2024 a division of IG Design Group Americas Inc. • Atlanta, GA 30342 USA [www.thedesigngroup.com](http://www.thedesigngroup.com) • All Rights Reserved. [www.simplicity.com](http://www.simplicity.com) • Made in the U.S.A. Fabriqué aux États-Unis.

To be used for individual private home use only and not for commercial or manufacturing purposes. • A usage privé seulement et non à des fins commerciales ou de production en série. • Para uso privado solamente, no se puede utilizar con propósitos de comercialización o de producción en serie.