

S3005

Simplicity



A



B



Designed and printed in USA.

Average

Moins Facile

MISSES' AND WOMEN'S SKIRTS

Suggested Fabrics: Cotton Types such as Denim, Poplin, Sateen and Silky Types such as Crepe, Rayon, Satin. **Interfacing:** Lightweight Fusible.

Notions: A,B: One 7" (18cm) invisible zipper for Misses, 9" (23cm) invisible zipper for Women.

MISSES' SIZES	10	12	14	16	18
EUROPEAN	36	38	40	42	44

BODY MEASUREMENTS: Select pattern size based on body measurements

Bust	32½	34	36	38	40	Ins.
Waist	25	26½	28	30	32	"
Hip-9" below waist	34½	36	38	40	42	"
Back-neck to waist	16	16¼	16½	16¾	17	"

Interfacing A,B - 20" - 1 yd.

Skirt A	45**	2%	2%	2%	2%	2%	2%	Yds.	"
	60**	2	2%	2%	2%	2%	2%	"	"
Skirt B	45**	3½	3%	3%	3%	3%	3%	Yds.	"
	60**	2%	2%	2%	2%	2%	3	"	"

WOMEN'S SIZES	20W	22W	24W	26W	28W	30W	32W	34W	36W	38W
EUROPEAN	46	48	50	52	54	56	58	60	62	64

BODY MEASUREMENTS: Select pattern size based on body measurements

Bust	42	44	46	48	50	52	54	56	58	60	Ins.
Waist	35	37	39	41½	44	46½	49	51½	53	54½	"
Hip-9" below waist	44	46	48	50	52	54	56	58	60	62	"
Back-neck to waist	17¼	17%	17½	17%	17¾	17%	18	18¼	18½	18%	"

Interfacing A,B - 20" - 1½ yds.

Skirt A	45**	3%	3%	3%	4	4	4%	4%	4%	4%	4%	Yds.
	60**	3	3	3	3	3	3	3%	3%	3%	3%	"
Skirt B	45**	4%	4%	4%	4%	4%	4%	4%	4%	4%	4%	Yds.
	60**	3%	3%	3%	3%	3%	3%	3%	3%	3%	3%	"

NOTE: Please refer to the sewing instructions for **FINISHED GARMENT MEASUREMENTS**.

*with nap **without nap

JUPES POUR JEUNES FEMMES ET FEMMES

Tissus Conseillés: Types Coton tels que Denim, Popeline, Satinette et Types soie tels que Crêpe, Rayonne, Satin. **Entoilage:** Thermocollant léger.

Mercerie: A,B: 1 fermeture à glissière invisible de 18cm pour Jeunes Femmes, fermeture à glissière invisible de 23cm pour Femmes.

TAILLES (J. FEMMES)	10	12	14	16	18
FRANÇAISES	38	40	42	44	46
EUROPÉEN	36	38	40	42	44

MESURES DU CORPS: Choisissez la taille du patron basée sur les mesures du corps

Poitrine	83	87	92	97	102	cm
Taille	64	67	71	76	81	"
Hanches (23cm au-dessous de la taille)						
	88	92	97	102	107	cm
Dos du cou à la taille	40.5	41.5	42	42.5	43	"

Entoilage A,B - 51cm - 0.9m

Jupe A	115cm*	2.4	2.4	2.5	2.5	2.5	m
	150cm*	1.8	1.8	1.9	2.1	2.2	"
Jupe B	115cm*	3.2	3.4	3.4	3.4	3.5	m
	150cm*	2.5	2.6	2.6	2.6	2.6	"

TAILLES (FEMMES)	20W	22W	24W	26W	28W	30W	32W	34W	36W	38W
FRANÇAISES	48	50	52	54	56	58	60	62	64	66
EUROPÉEN	46	48	50	52	54	56	58	60	62	64

MESURES DU CORPS: Choisissez la taille du patron basée sur les mesures du corps

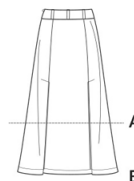
Poitrine	107	112	117	122	127	132	137	142	147	152	cm
Taille	89	94	99	105	112	118	124	130	134	138	"
Hanches (23cm au-dessous de la taille)											
	112	117	122	127	132	137	142	147	152	157	cm
Dos du cou à la taille	44	44	44.5	45	45	45.5	46	46	46.5	47	"

Entoilage A,B - 51cm - 1.7m

Jupe A	115cm*	3.4	3.4	3.5	3.7	3.7	3.8	3.8	3.9	3.9	4.0	m
	150cm*	2.7	2.7	2.7	2.7	2.7	2.7	2.9	2.9	2.9	3.0	"
Jupe B	115cm*	4.0	4.1	4.1	4.2	4.2	4.2	4.3	4.3	4.5	4.5	m
	150cm*	3.1	3.1	3.1	3.2	3.2	3.3	3.3	3.3	3.3	3.3	"

NOTE: S'il vous plaît, reportez-vous au instructions de couture pour les **MESURES DU VÊTEMENTS FINI**.

*avec sens **sans sens



A

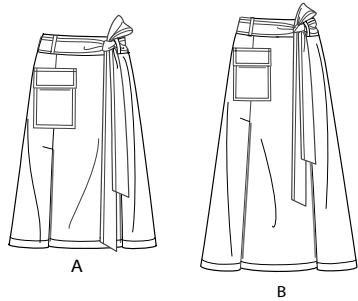
B



A,B

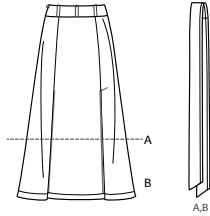
Simplicity

Thank you for purchasing this Simplicity pattern.
We made every effort to provide you with a high quality product.



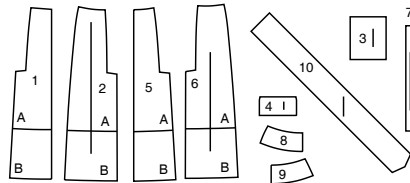
A

B



A,B

10 PIECES



- 1 Front-A,B
- 2 Side Front-A,B
- 3 Pocket-A,B
- 4 Flap-A,B
- 5 Back-A,B
- 6 Side Back-A,B
- 7 Carrier-A,B
- 8 Yoke Front-A,B
- 9 Yoke Back-A,B
- 10 Tie Belt-A,B

MISSES' SIZES	10	12	14	16	18
EUROPEAN	36	38	40	42	44

FINISHED GARMENT MEASUREMENTS (Includes Design and Wearing Ease)

A,B Waist	27	28 1/2	30 1/2	32 1/2	34 1/2	Ins.
A,B Hip	37	38 1/2	40 1/2	42 1/2	44 1/2	"
Width, lower edge	48	49 1/2	51 1/2	53 1/2	55 1/2	Ins.
Skirt A	52	53 1/2	55 1/2	57 1/2	59 1/2	"
Skirt B	25	25	25	25	25	Ins.
Finished back length from waist	25	25	25	25	25	"
Skirt A	35	35	35	35	35	"
Skirt B	35	35	35	35	35	"

WOMEN'S SIZES

20W	22W	24W	26W	28W	30W	32W	34W	36W	38W
46	48	50	52	54	56	58	60	62	64

FINISHED GARMENT MEASUREMENTS (Includes Design and Wearing Ease)

A,B Waist	35	37	39	41	43	45	47	49	51	53	cm
A,B Hip	45 1/2	47 1/2	49 1/2	51 1/2	53 1/2	55 1/2	57 1/2	59 1/2	61 1/2	63 1/2	"
Width, lower edge	58 1/2	60 1/2	62 1/2	64 1/2	66 1/2	68 1/2	70 1/2	72 1/2	74 1/2	76 1/2	cm
Skirt A	63	65	67	69	71	73	75	77	79	81	"
Skirt B	26 1/2	26 1/2	26 1/2	26 1/2	26 1/2	26 1/2	26 1/2	26 1/2	26 1/2	26 1/2	cm
Finished back length from waist	26 1/2	26 1/2	26 1/2	26 1/2	26 1/2	26 1/2	26 1/2	26 1/2	26 1/2	26 1/2	"
Skirt A	36 1/2	36 1/2	36 1/2	36 1/2	36 1/2	36 1/2	36 1/2	36 1/2	36 1/2	36 1/2	"
Skirt B	36 1/2	36 1/2	36 1/2	36 1/2	36 1/2	36 1/2	36 1/2	36 1/2	36 1/2	36 1/2	"

General Directions

The Pattern

- SYMBOLS**
- GRAIN LINE: Place on straight grain of fabric parallel to selvage
 - PLACE SOLID LINE on fold of fabric.
 - CENTER FRONT OR BACK of garment.
 - NOTCHES
 - DOTS
 - CUTTING LINE
 - LENGTHEN OR SHORTEN LINES

ADJUST IF NEEDED
Make adjustments before placing pattern on fabric.

TO LENGTHEN:
Cut pattern between lengthen or shorten lines. Spread pattern evenly, the amount needed and tape to paper.

TO SHORTEN:
At lengthen or shorten lines, make an even pleat taking up amount needed. Tape in place.

SEAM ALLOWANCE: 5/8" (1.5cm) unless otherwise stated is included but not printed on MULTI-SIZE PATTERNS. Mark your size with colored felt tip pen.

See chart on tissue for how to use MULTI-SIZE PATTERNS.

When lengthen or shorten lines are not given, make adjustments at lower edge of pattern.

Cutting/Marking

BEFORE CUTTING:
PRESS pattern pieces with a warm dry iron. PRE-SHRINK fabric by pre-washing washables or steam-pressing non-washables.

CIRCLE your cutting layout.
PIN pattern to fabric as shown in Cutting Layouts.

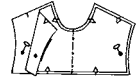
FOR DOUBLE THICKNESS: Fold fabric with RIGHT sides together.

FOR SINGLE THICKNESS: Place fabric RIGHT side up.

FOR PILE, SHADED OR ONE WAY DESIGN FABRICS: Use "with nap" layouts

AFTER CUTTING:
Transfer markings to WRONG side of fabric before removing pattern. Use pin and chalk method or dressmaker's tracing paper and wheel.

- To Quick Mark:**
- Snip edge of fabric to mark notches, ends of fold lines and center lines.
 - Pin mark dots.



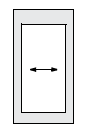
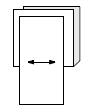
SPECIAL CUTTING NOTES

★ If layout shows a piece extending past fold, cut out all pieces except piece that extends.

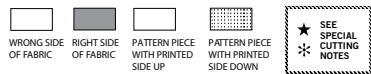
Open out fabric to single thickness. Cut extending piece on RIGHT side of fabric in position shown.

✳ Mark small arrows along both selvages indicating direction of nap or design. Fold fabric crosswise with RIGHT sides together, and cut along fold (a).

Turn one fabric layer around so arrows on both layers go in the same direction. Place RIGHT sides together (b).



Cutting Layouts

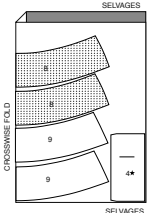


POSITION OF PATTERN PIECES MAY VARY SLIGHTLY ACCORDING TO YOUR PATTERN SIZE

MISSES'

INTERFACING A,B

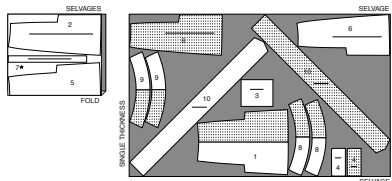
USE PIECES 4 8 9
20" (51CM)
ALL SIZES



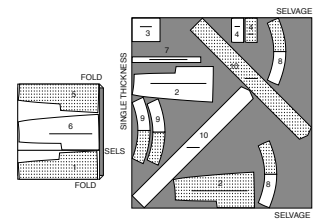
SKIRT A

USE PIECES 1 2 3 4 5 6 7 8 9 10

45" (115CM)
WITH NAP
ALL SIZES



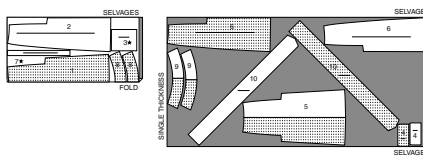
60" (150CM)
WITH NAP
ALL SIZES



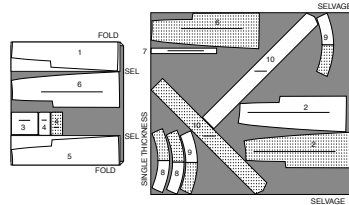
SKIRT B

USE PIECES 1 2 3 4 5 6 7 8 9 10

45" (115CM)
WITH NAP
ALL SIZES



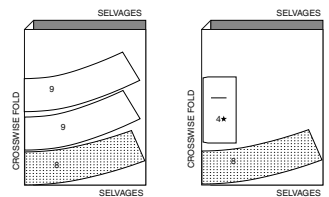
60" (150CM)
WITH NAP
ALL SIZES



WOMEN'S

INTERFACING A,B

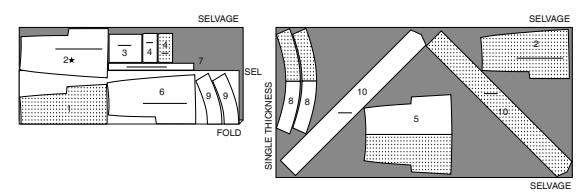
USE PIECES 4 8 9
20" (51CM)
ALL SIZES



SKIRT A

USE PIECES 1 2 3 4 5 6 7 8 9 10

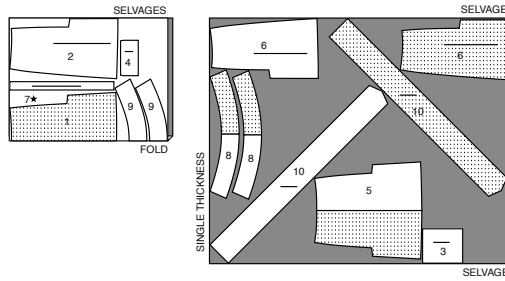
45" (115CM)
WITH NAP
ALL SIZES



S3005

2 of 4

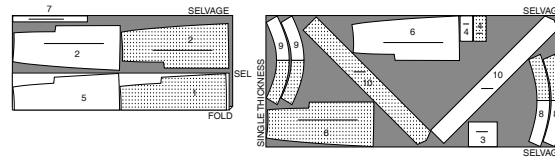
60" (150CM)
WITH NAP
ALL SIZES



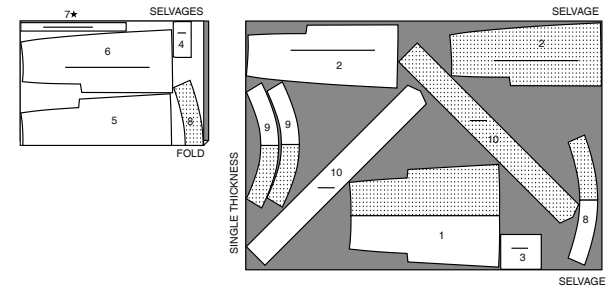
SKIRT B

USE PIECES 1 2 3 4 5 6 7 8 9 10

45" (115CM)
WITH NAP
ALL SIZES



60" (150CM)
WITH NAP
ALL SIZES

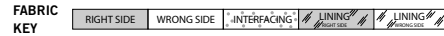


SEWING TUTORIALS



Build your skills viewing short, easy-to-follow videos at simplicity.com/sewingtutorials

Sewing Directions



Read **General Directions** on page 1 before you begin.
Sewing methods in **BOLD TYPE** have Sewing Tutorial Video available. Scan QR CODE to watch videos:

CARRIERS – See Loops and Straps: “how to see belt loops, aka carriers” video.

EDGESTITCH - See Machine Stitches: “how to edgestitch” video.

INVISIBLE ZIPPER - See Zipper: “sewing an invisible zipper” video.

STAYSTITCH - See Machine Stitches: “how to do stay-stitching” video.

TOPSTITCH - See Machine Stitches: “how to topstitch” video.

TRIM – See How to Sew: Trim, Clip, and Layer Seams” video.

UNDERSTITCH - See Machine Stitches: “how to understitch” video.

PATTERN PIECES WILL BE IDENTIFIED BY NUMBERS THE FIRST TIME THEY ARE USED.

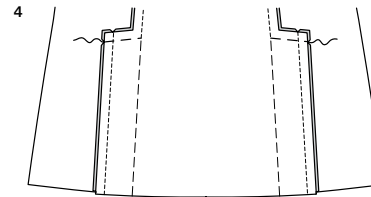
STITCH SEAMS WITH RIGHT SIDES TOGETHER UNLESS OTHERWISE STATED.

SKIRT A, B

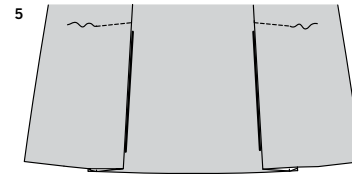
1. STAYSTITCH upper edge of **FRONT (1)** and **SIDE FRONT (2)** sections 1/2" (1.3cm) from raw edge in direction of arrows. Staystitching will not be shown in the following illustrations.

2. With **RIGHT** sides together and raw edges even, pin side front sections to front at inner edges, matching large dots and solid lines below large dots. Stitch from upper edge to large dot, back-stitching at large dot to reinforce seam. Machine-baste along solid line below large dot. Stitch long edges of pleat extensions together.

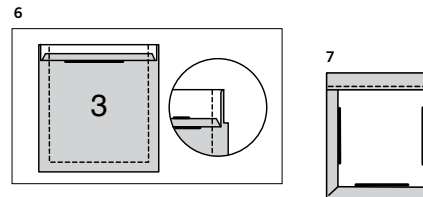
3. Starting 1" (2.5cm) above large dot, stitch along seam line to large dot; pivot at large dot and stitch across upper edge of pleat extensions, as shown.



4. Press, pressing seam and pleat towards side front. Hand-baste upper edge of extension in place.

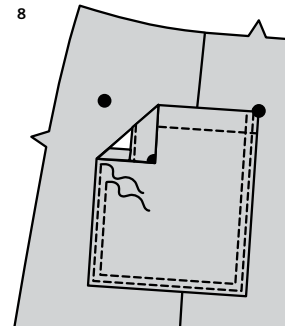


5. On **OUTSIDE**, stitch along stitching line through all thicknesses; remove basting. Remove basting along solid line now or just before hemming skirt.



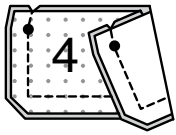
6. Press under 1/4" (6mm) on upper edge of **POCKET (3)**. Turn upper edge to **OUTSIDE** along fold line, forming facing. Stitch along seam line on raw edges. Trim seam allowance in facing area to 1/4" (6mm).

7. Turn corners **RIGHT** side out, turning facing to **WRONG** side. Press, pressing under raw edges along stitching. Stitch facing close to inner edge.



8. Pin pocket to **RIGHT** half of skirt, placing corners at large dots. **EDGESTITCH** side and lower edges. **TOPSTITCH** side and lower edges 1/4" (6mm) away from **EDGESTITCHING**.

9



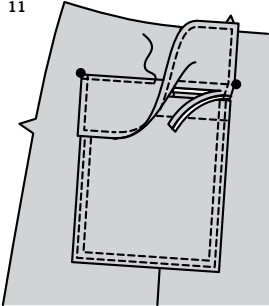
10



9. Apply fusible interfacing to **WRONG** side of one **FLAP** (4) section, following manufacturer's directions.
With **RIGHT** sides together, stitch facing to flap, leaving edge with small dots open.
TRIM seam and corners.

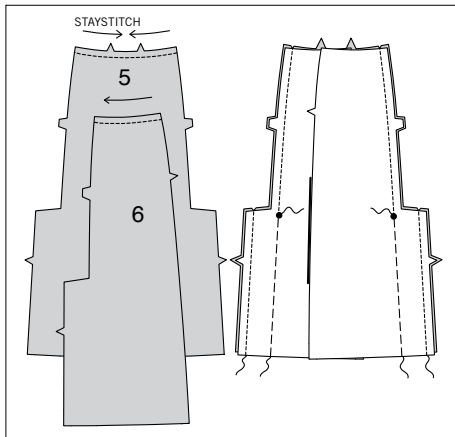
10. Turn flap; press.
Machine-baste 5/8" (1.5cm) from raw edge.
On **OUTSIDE**, **TOPSTITCH** 1/4" (6mm) away from side and lower edges.

11



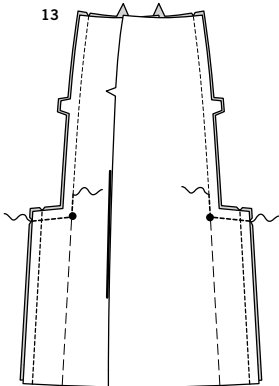
11. On **OUTSIDE**, pin flap to front, placing basting along flap line, matching small dots, as shown.
Stitch along basting.
Trim close to stitching.
Turn flap down; press.
TOPSTITCH upper edge.

12



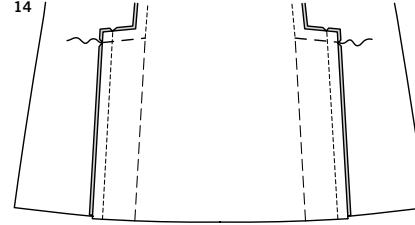
12. **STAYSTITCH** upper edge of **BACK** (5) and **SIDE BACK** (6) sections same as for front sections.
With **RIGHT** sides together and raw edges even, pin side back sections to back at inner edges, matching large dots and solid lines below large dots.
Stitch from upper edge to large dot, back-stitching at large dot to reinforce seam.
Machine-baste along solid line below large dot.
Stitch long edges of pleat extensions together.

13



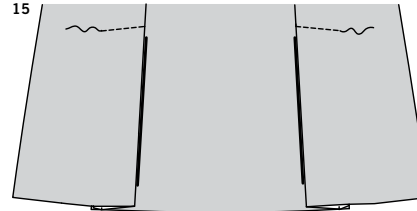
13. Starting 1" (2.5cm) above large dot, stitch along seam line to large dot; pivot at large dot and stitch across upper edge of pleat extensions.

14



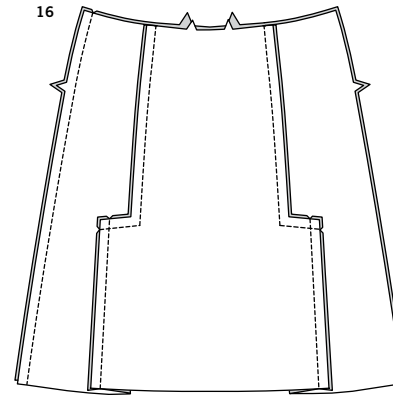
14. Press, pressing seam and pleat towards side back.
Hand-baste upper edge of extension in place.

15



15. On **OUTSIDE**, stitch along stitching line through all thicknesses; remove basting.
Remove basting along solid line now or just before hemming skirt.

16



16. Stitch back to front at **RIGHT** side seam.

17



17. Fold **CARRIER** (7) in half, lengthwise with **WRONG** sides together.
Press, setting in a crease.

18



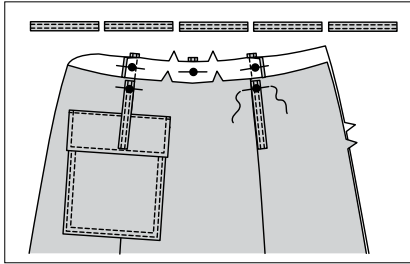
18. Open out long edges of carrier and turn them to **WRONG** side so that they meet at the crease. Press.

19



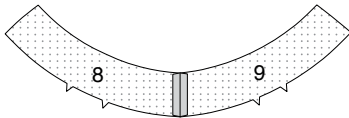
19. Fold carrier in half lengthwise, bringing pressed edges together.
EDGE**STITCH** long edges.

20



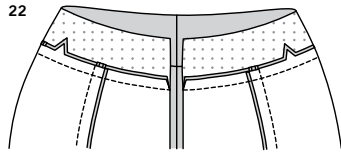
- 20.** Cut carrier into five sections, each 4-1/4" (11cm) long. On **OUTSIDE**, center and pin one end of each carrier to upper edge of skirt over large dots, having raw edges even.

21



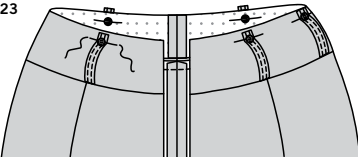
- 21.** Apply interfacing to **WRONG** side of **YOKE FRONT (8)** and **YOKE BACK (9)** sections. With **RIGHT** sides together, stitch yoke front to yoke back at **RIGHT** side seam.

22



- 22.** With **RIGHT** sides together and raw edges even, pin yoke to upper edge of skirt, matching centers, notches, and **RIGHT** side seams. Stitch. **TRIM** seam. Press seam toward yoke.

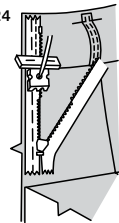
23



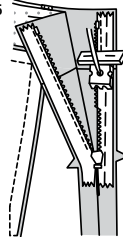
- 23.** Turn free ends of carriers up over yoke. Center and baste to upper edge of yoke over large dots, having raw edges even.

NOTE: *Stitch invisible zipper using an invisible zipper foot. For a How-to video, see ZIPPER: "sewing an invisible zipper".*

24



25

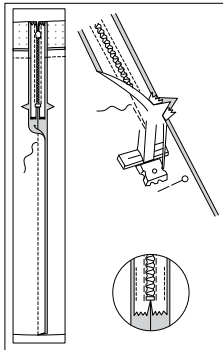


- 24.** Open zipper and press tape using a cool iron. On **OUTSIDE**, pin **RIGHT** side of zipper face down on **RIGHT** side of zipper opening. Have the coil along the seam line, the tape within the seam allowance and the top stop 3/4" (2cm) below upper edge, as shown. Hand-baste along center of tape. Position zipper foot at top of zipper with **RIGHT** groove of foot over coil. Stitch along tape to notch. Back-stitch to reinforce.

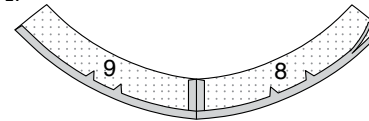
- 25.** Pin remaining half of zipper to **LEFT** side of zipper opening in same manner. Make sure upper and lower edges of skirt are even and that seams match. Hand-baste along center of tape. Position zipper foot at top of zipper with **LEFT** groove over coil. Stitch along tape to notch. Back-stitch to reinforce.

- 26.** Close zipper and check that it is invisible from the **OUTSIDE**. Pull free ends of zipper tape away from seam allowance. Pin remaining **LEFT** side seam together below zipper. Position zipper foot all the way to the **LEFT** so the needle goes down through the outer notch of the foot. Start stitching seam 1/4" (6mm) above lowest stitch and slightly to the **LEFT**. Stitch seam for about 3" (7.5cm). Stitch remainder of seam using your regular presser foot.

26

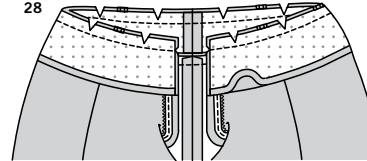


27



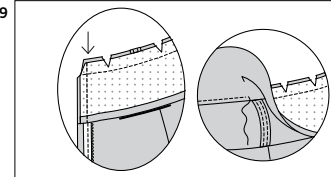
- 27.** Apply interfacing to **WRONG** side of yoke facing sections. Stitch **RIGHT** side seam. Press under 5/8" (1.5cm) on lower notched edge; trim to 3/8" (1cm).

28



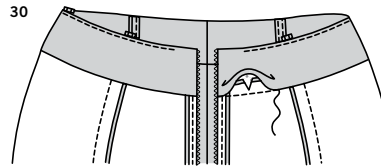
- 28.** Open out **LEFT** opening edges of yoke, rolling zipper teeth away from opening edge. With **RIGHT** sides together, pin facing to upper edge of yoke, matching centers and side seams. Stitch upper edge. **TRIM** seam; clip curves.

29



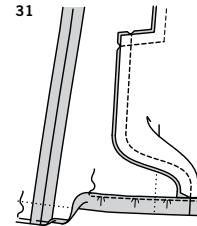
- 29.** Pin **LEFT** opening edges together. Using an adjustable zipper foot, stitch 1/2" (1.3cm) from back edges, keeping zipper teeth free. Trim corners. Do not trim center back edges. **UNDERSTITCH** by pressing facing and seam away from skirt, stitching through facing and seam allowances close to seam as far as possible.

30



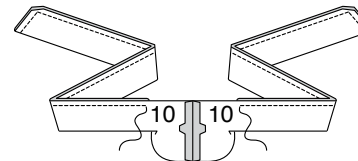
- 30.** Turn facing and back edges to **INSIDE**, rolling zipper teeth back in place; **SLIPSTITCH** pressed edge of facing over seam.

31



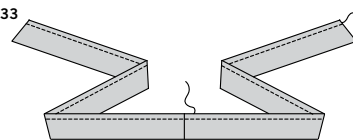
- 31.** Press up 1-1/4" (3.2cm) hem on lower edge of skirt. Clip pleat seams to stitching at top of hem. Press seams open below clips. Stitch 1/4" (6mm) from inner raw edge, using long machine stitches. Turn in raw edge along stitching. Pull up stitching so hem lays flat. Press, shrinking out fullness. Stitch close to inner pressed edge.

32



- 32.** Stitch notched ends of **BELT (10)** sections. Fold belt in half, lengthwise, with **RIGHT** sides together. Stitch, leaving an opening to turn. **TRIM** seam and corners.

33



- 33.** Turn belt; press. **SLIPSTITCH** opening edges together. **TOPSTITCH** the shorter of the two long edges 1/2" (1.3cm) from finished edge. When wearing skirt, insert belt through loops, as shown on envelope.



Congrats!

You've completed your sewing adventure

**SHARE
YOUR** LOOK



Post your pattern and tag us
[@simplicity_creative_group](#) and [#simplicitypatterns](#)
for a chance to be featured on our social media.

Look for more PDF patterns at simplicity.com

Have a question or need help with your sewing project call us at
1-888-588-2700



Simplicity ©2024 a division of IG Design Group Americas Inc. • Atlanta, GA 30342 USA www.thedesigngroup.com • All Rights Reserved. www.simplicity.com • Made in the U.S.A. Fabriqué aux États-Unis.

To be used for individual private home use only and not for commercial or manufacturing purposes. • A usage privé seulement et non à des fins commerciales ou de production en série. • Para uso privado solamente, no se puede utilizar con propósitos de comercialización o de producción en serie.