

S3004

Simplicity®

Easy

Facile

MISSES' TOP WITH SLEEVE VARIATIONS

Suggested Fabrics: Challis, Charmeuse, Cotton Lawn, Cotton Blends, Gauze, Lightweight Linen Blends, Poplin, Shirtings, Voile. **Interfacing:** Lightweight Fusible.

Notions: A,B,C: 1½ yds. (1.1m) of 1½" (4cm) elastic. **Also for A:** One pkg. of ½" (1.3cm) single fold bias tape. **Also for B:** Eight ¾" (1.5cm) buttons.

Sizes	6	8	10	12	14	16	18	20	22	24
European	32	34	36	38	40	42	44	46	48	50

BODY MEASUREMENTS: Select pattern size based on body measurements

Bust	30½	31½	32½	34	36	38	40	42	44	46	Ins.
Waist	23	24	25	26½	28	30	32	34	37	39	"
Hip-9" below waist	32½	33½	34½	36	38	40	42	44	46	48	"
Back-neck to waist	15½	15¾	16	16¼	16½	16¾	17	17¼	17½	17¾	"

Interfacing A,B,C - 20" - ¾ yd.

Top A	45**	1½	1½	1½	1¾	1¾	1¾	1¾	2	2	Yds.
60**	1½	1½	1½	1½	1½	1½	1½	1½	1½	1½	"
Top B	45**	2½	2½	2½	2¾	2¾	2¾	2¾	3½	3½	Yds.
60**	1½	1½	1½	2	2	2	2½	2½	2½	2½	"
Top C	45**	2½	2½	2½	2¾	2¾	2¾	2¾	2¾	2¾	Yds.
60**	1½	1½	1½	1½	1½	1¾	1¾	1¾	1¾	1¾	"

FINISHED GARMENT MEASUREMENTS (Includes Design and Wearing Ease)

A,B,C Bust	37	38	39	40½	42½	44½	46½	48½	50½	52½	Ins.
Width, lower edge											
Top A	47½	48½	49½	51	53	55	57	59	61	63	Ins.
Top B,C	51½	52½	53½	54½	56½	58½	60½	62½	64½	66½	"
Finished back length from base of neck											
Top A	20½	20¾	21	21¼	21½	21¾	22	22¼	22½	22¾	Ins.
Top B,C	23½	23¾	24	24¼	24½	24¾	25	25¼	25½	25¾	"

*with nap **without nap

HAUT AVEC VARIATIONS DE MANCHES POUR JEUNES FEMMES

Tissus Conseillés: Challis, Charmeuse, Linon de coton, Cotonnades, Gaze, Lin mélangés léger, Popeline, Shirtings, Voile. **Entoilage:** Thermocollant léger.

Mercerie: A,B,C: 1.1m d'élastique de 4cm. **Aussi pour A:** 1 paquet de ruban de biais simple de 1.3cm. **Aussi pour B:** 8 boutons de 1.5cm.

Tailles	6	8	10	12	14	16	18	20	22	24
Françaises	34	36	38	40	42	44	46	48	50	52
Européen	32	34	36	38	40	42	44	46	48	50

MESURES DU CORPS: Choisissez la taille du patron basée sur les mesures du corps

Poitrine	78	80	83	87	92	97	102	107	112	117	cm
Taille	58	61	64	67	71	76	81	87	94	99	"
Hanches (23cm au-dessous de la taille)	83	85	88	92	97	102	107	112	117	122	cm
Dos du cou à la taille	39.5	40	40.5	41.5	42	42.5	43	44	44	44.5	"

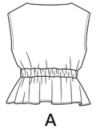
Entoilage A,B,C - 51cm - 0.7m

Haut A	115cm	1.5	1.5	1.5	1.6	1.6	1.7	1.7	1.7	1.8	1.8	m
	150cm*	1.0	1.0	1.0	1.0	1.1	1.1	1.1	1.3	1.3	1.3	"
Haut B	115cm*	2.2	2.3	2.3	2.4	2.5	2.5	2.5	2.6	2.9	2.9	m
	150cm*	1.7	1.7	1.7	1.7	1.8	1.8	1.9	1.9	2.2	2.3	"
Haut C	115cm*	1.9	2.1	2.1	2.2	2.2	2.3	2.3	2.3	2.4	2.4	m
	150cm*	1.4	1.5	1.5	1.5	1.5	1.6	1.6	1.7	1.7	1.7	"

MESURES DES VÊTEMENTS FINI (Motif et aisance de port compris)

A,B,C Poitrine	94	97	99	103	108	113	118	123	128	133	cm
Largeur à l'ourlet											
Haut A	121	123	126	130	135	140	145	150	155	160	cm
Haut B,C	130	133	135	139	144	149	154	159	164	170	"
Longueur finie - dos, votre nuque à l'ourlet											
Haut A	52	53	53	54	55	55	56	57	57	58	cm
Haut B,C	60	60	61	62	62	63	64	64	65	65	"

*avec sens **sans sens



A



B

C



A



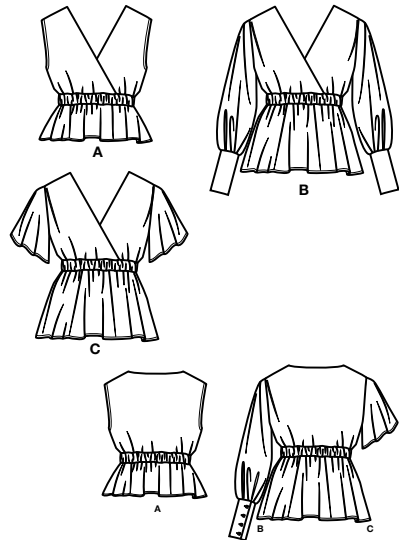
C



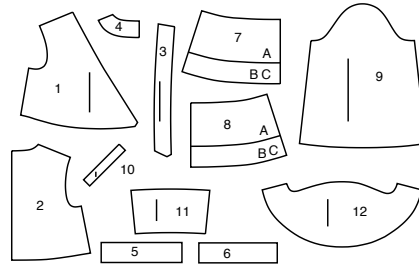
Designed and printed in USA.

Simplicity®

Thank you for purchasing this Simplicity pattern.
We made every effort to provide you with a high quality product.



12 PIECES



- 1 Front-A,B,C
- 2 Back-A,B,C
- 3 Front Facing-A,B,C
- 4 Back Facing-A,B,C
- 5 Front Casing-A,B,C
- 6 Back Casing-A,B,C
- 7 Peplum Front-A,B,C
- 8 Peplum Back-A,B,C
- 9 Sleeve-B
- 10 Continuous Lap-B
- 11 Cuff-B
- 12 Sleeve-C



www.simplicity.com

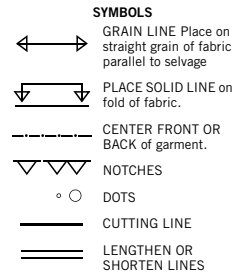


info@simplicity.com



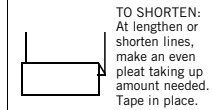
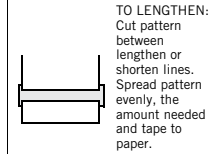
1-888-588-2700

The Pattern



SEAM ALLOWANCE: 5/8" (1.5cm)
unless otherwise stated is included but not printed on MULTI-SIZE PATTERNS.
Mark your size with colored felt tip pen.
See chart on tissue for how to use MULTI-SIZE PATTERNS.

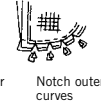
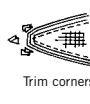
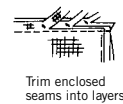
ADJUST IF NEEDED
Make adjustments before placing pattern on fabric.



When lengthen or shorten lines are not given, make adjustments at lower edge of pattern.

Sewing

- SEW garment following **Sewing Directions**.
- PIN or machine-baste seams matching notches.
- STITCH 5/8" (1.5 cm) seams unless otherwise stated.
- PRESS seams open unless otherwise indicated clipping when necessary so seams will lie flat.
- TRIM seams to reduce bulk, as shown below.



General Directions

Cutting/Marking

BEFORE CUTTING:

PRESS pattern pieces with a warm dry iron. PRE-SHRINK fabric by pre-washing washables or steam-pressing non-washables.

CIRCLE your cutting layout.

PIN pattern to fabric as shown in Cutting Layouts.

• FOR DOUBLE THICKNESS: Fold fabric with RIGHT sides together.

• FOR SINGLE THICKNESS: Place fabric RIGHT side up.

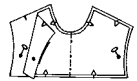
• FOR PILE, SHADED OR ONE WAY DESIGN FABRICS: Use "with nap" layouts

AFTER CUTTING:

Transfer markings to WRONG side of fabric before removing pattern. Use pin and chalk method or dressmaker's tracing paper and wheel.

To Quick Mark:

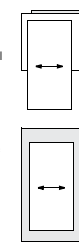
- Snip edge of fabric to mark notches, ends of fold lines and center lines.
- Pin mark dots.



SPECIAL CUTTING NOTES

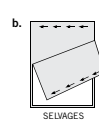
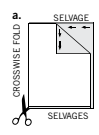
- If layout shows a piece extending past fold, cut out all pieces except piece that extends.

Open out fabric to single thickness. Cut extending piece on RIGHT side of fabric in position shown.

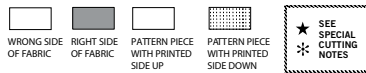


- Mark small arrows along both selvages indicating direction of nap or design. Fold fabric crosswise with RIGHT sides together, and cut along fold (a).

Turn one fabric layer around so arrows on both layers go in the same direction. Place RIGHT sides together (b).



Cutting Layouts

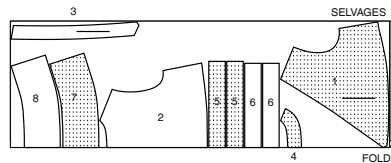


POSITION OF PATTERN PIECES MAY VARY SLIGHTLY ACCORDING TO YOUR PATTERN SIZE

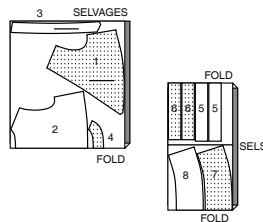
TOP A

USE PIECES 1 2 3 4 5 6 7 8

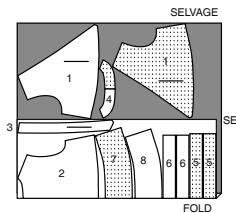
45" (115CM)
WITH NAP
ALL SIZES



60" (150CM)
WITH NAP
SIZES 6 8 10 12 14 16 18



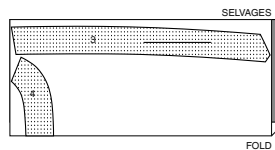
60" (150CM)
WITH NAP
SIZES 20 22 24



INTERFACING A, C

USE PIECES 3 4

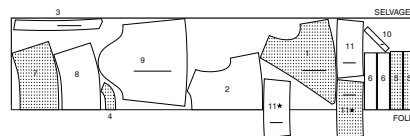
20" (51CM)
ALL SIZES



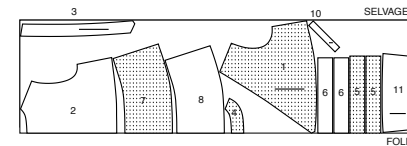
TOP B

USE PIECES 1 2 3 4 5 6 7 8 9 10 11

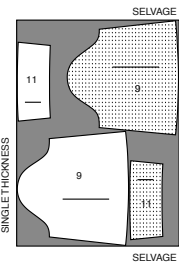
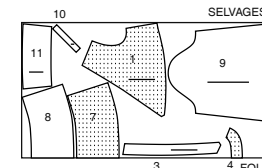
45" (115CM)
WITH NAP
SIZES 6 8 10 12 14
16 18 20



45" (115CM)
WITH NAP
SIZES 22 24



60" (150CM)
WITH NAP
SIZES 6 8 10 12 14 16
18 20

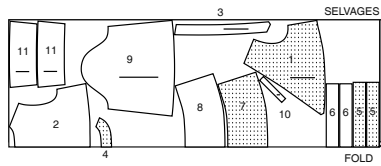


CUTTING LAYOUTS CONTINUED ON PAGE 2

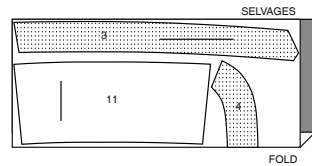
S3004

2 of 4

60" (150CM)
WITH NAP
SIZES 20 22 24

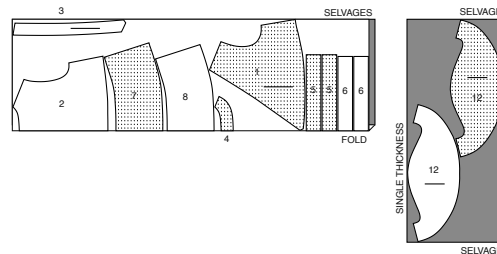
**INTERFACING B**
USE PIECES 3 4 11

20" (51CM)
ALL SIZES

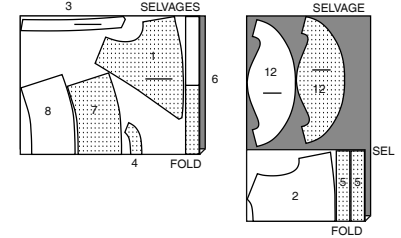
**TOP C**

USE PIECES 1 2 3 4 5 6 7 8 12

45" (115CM)
WITH NAP
ALL SIZES



60" (150CM)
WITH NAP
ALL SIZES



SEWING TUTORIALS



Build your skills viewing short, easy-to-follow videos at
[simplicity.com/sewingtutorials](https://www.simplicity.com/sewingtutorials)

Sewing Directions

FABRIC KEY

Read **General Directions** on page 1 before you begin.

Sewing methods in **BOLD TYPE** have Sewing Tutorial Video available. Scan **QR CODE** to watch videos:

EASE/GATHER - See Gathering: "sewing two row gathers" video.

FINISH - See Seams: "how to finish seam allowances" video.

SLEEVE - See Armholes/Sleeves: "sewing a set in sleeve" video.

SLIPSTITCH - See Hand Stitching: "how to slipstitch" video.

UNDERSTITCH - See Machine Stitches: "how to understitch" video.

PATTERN PIECES WILL BE IDENTIFIED BY NUMBERS THE FIRST TIME THEY ARE USED.

STITCH SEAMS WITH RIGHT SIDES TOGETHER UNLESS OTHERWISE STATED.

NOTE: Under each sub-heading, the first view will be illustrated, unless otherwise illustrated.

TOP A, B, C
INTERFACING

1. FOR VIEWS A, B, C: Fuse INTERFACING to wrong side of each matching FABRIC section, following manufacturer's instructions.

FOR VIEW B: Trim corners of INTERFACING, as shown. Fuse interfacing to wrong side of each matching FABRIC section, following manufacturer's instructions.

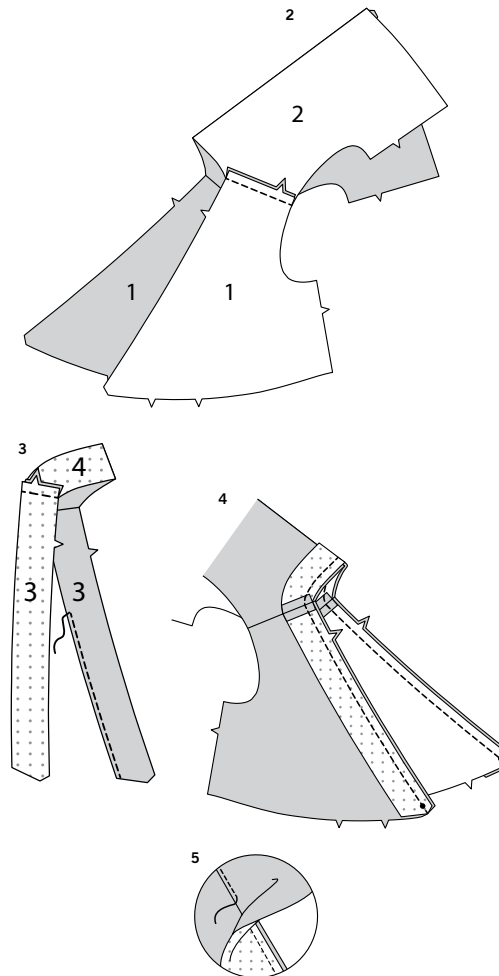
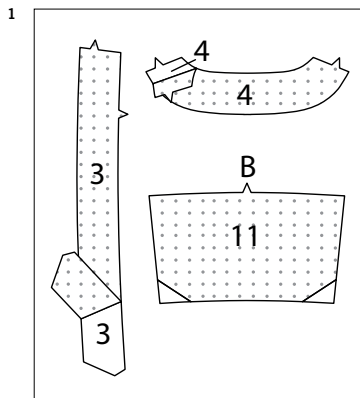
FRONT, BACK AND FACING

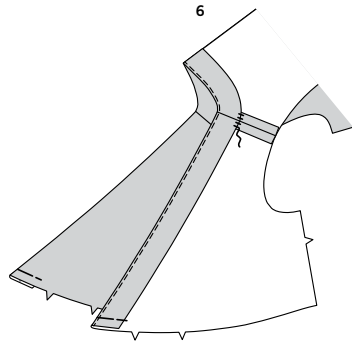
2. Stitch each FRONT (1) to BACK (2) at shoulders.

3. Stitch each FRONT FACING (3) to BACK FACING (4) at shoulders.
FINISH long unnotched edge of facing.

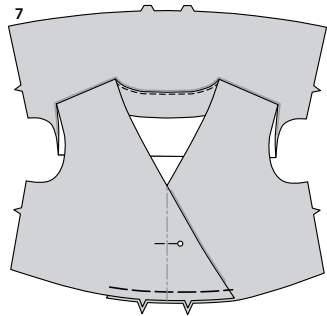
4. With **RIGHT** sides together, pin facing to front and back, matching center backs, seams and dots. Stitch front and neck edge; trim seams.
UNDERSTITCH facing.

5. Turn facing to inside; press. Baste lower edges together.

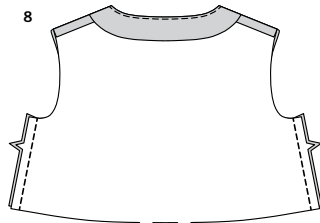




6. Tack facing to shoulder seams. Baste raw edges together.

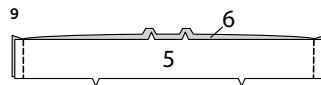


7. With RIGHT sides up, lap right front over left, matching notches and centers. Baste along center front. Baste across lower edge.

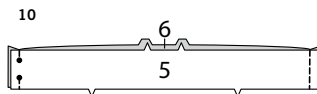


8. Stitch back to front at sides.

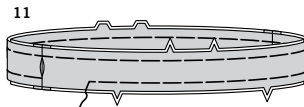
CASING AND ELASTIC



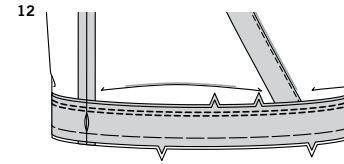
9. With RIGHT sides together, pin one FRONT CASING (5) section to one BACK CASING (6) section at side seams. Stitch. (Remaining casing sections will be used as facing.)



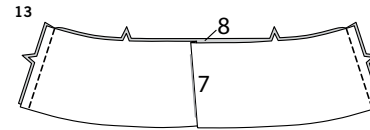
10. With RIGHT sides together, pin front casing FACING (5) to back casing FACING (6) at side seams, matching dots. Stitch, leaving left side seam free between small dots for casing. Back-stitch at small dots to reinforce seam.



11. Pin casing sections, wrong sides together, matching notches, centers and seams. Baste raw edges together.

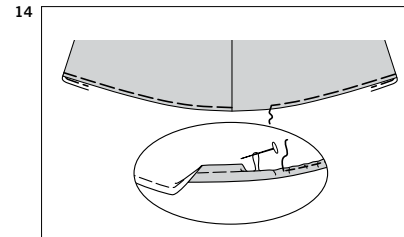


12. With facing side of casing facing you, pin casing to lower edge of upper section, matching notches, centers and side seams. Stitch. Stitch again 1/4"(6mm) away in seam allowance. Trim seams close to second stitching; press seam toward top, turning casing down.

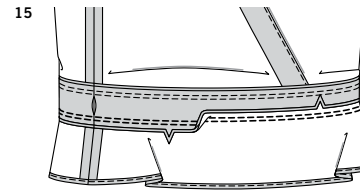


PEPLUM

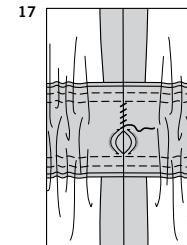
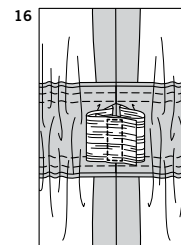
13. Stitch PEPLUM FRONT (7) to PEPLUM BACK (8) at sides.



14. Machine-stitch 1/4"(6mm) from lower edge of peplum, using long machine stitches, as shown. Press up a 5/8"(1.5cm) hem at lower edge of peplum, turning under 1/4"(6mm) on raw edge. Pull thread to ease in fullness; stitch.



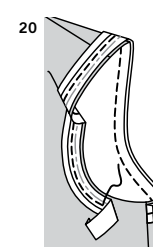
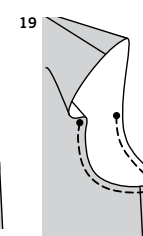
15. Pin upper edge of peplum to lower edge of casing, RIGHT sides together, matching notches, centers and seams. Stitch. Stitch again 1/4"(6mm) away in seam allowance. Trim seam close to second stitching. Press seam toward peplum, turning peplum down.



16. Cut elastic a comfortable waist measurement, plus 1"(2.5cm). Insert elastic through opening in casing. Overlap ends and hold with a safety pin. Try on top and adjust to fit. Stitch ends of elastic together securely.

17. SLIPSTITCH opening edges of casing together. Distribute fullness evenly. TIP-To secure elastic so it won't twist in wearing, stitch through all thicknesses of casing in the groove of each seam.

ARMHOLE FINISHING A



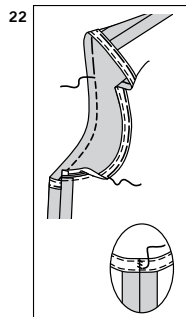
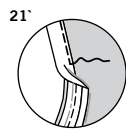
18. Trim away 1/4"(6mm) from armhole edges of top before stitching seams.

19. To prevent armhole from stretching, stitch 1/4"(6mm) from raw edge at underarm below dots, as shown.

20. Open out one edge of single fold bias tape. With RIGHT sides together, pin tape to armhole edge, having raw edges even, turning under and lapping one end at side seam. Stitch in 3/8"(1cm) seam. Trim seam; clip curves.

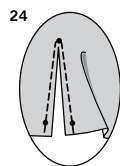
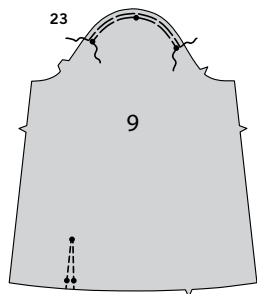
S3004

4 of 4



21. Understitch by pressing tape and seam away from top, stitching through tape and seam allowances close to seam.

22. Turn tape to INSIDE; press. Baste close to inner edge of tape. On OUTSIDE, top-stitch as basted. **SLIPSTITCH** opening edges of casing together.



23. **EASESTITCH** cap of SLEEVE (9) between end dots. To make slash opening at lower edge of sleeve, stitch along stitching lines. Pivot and take one small stitch across the point.

24. Slash between stitching, being careful not to slash through the stitch at the point.
TIP - To prevent fabric from fraying, treat the point with a liquid seam sealant, such as Fray Check™. TEST on a scrap of fabric first.

25. Press under 1/4"(6mm) on unmarked edge of CONTINUOUS LAP (10).

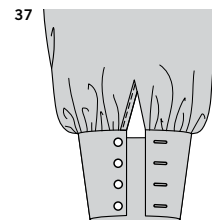
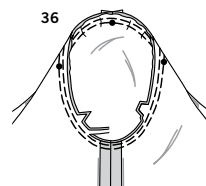
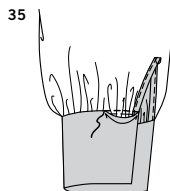
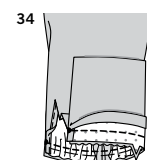
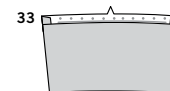
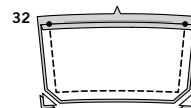
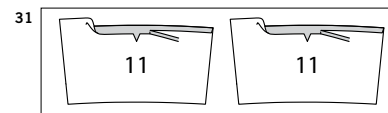
26. Spread slashed edges of sleeve apart so that they form a straight line. Pin RIGHT side of continuous lap to WRONG side of slashed edges, matching stitching lines and dots. Sleeve seam allowance will be 1/4"(6mm) at the ends, but taper close to nothing at the center dot. Stitch along stitching line, being careful not to pucker sleeve at center dot. Press seam toward lap.

27. Pin pressed edge of lap to OUTSIDE slightly over stitching. Stitch close to pressed edge.

28. Turn front edge of lap to INSIDE; baste in place across lower edge. To keep lap in place, stitch diagonally across upper edge of lap, as shown.

29. Stitch underarm seam.

30. To gather lower edge of sleeve between dots, stitch along seam line and 1/4"(6mm) INSIDE seam allowance, using a long machine-stitch.



31. Press under 5/8"(1.5cm) on notched edge of two uninterfaced CUFF (11) sections. Trim pressed edge to 3/8"(1cm). (This will be used as the facing.)

32. Pin facing to interfaced cuff sections, RIGHT sides together, matching dots. Stitch, leaving notched edge free; trim seams.

33. Turn cuff RIGHT side out; press.

34. Pin cuff to sleeve, RIGHT sides together, matching notches and dots. Adjust gathers. Baste. Stitch, keeping pressed edge free. Trim seams; press toward cuff.

35. **SLIPSTITCH** pressed edge of facing over seam.

36. With RIGHT sides together, pin sleeve into armhole with center small dot at shoulder seam, matching underarm seams, notches and remaining small dots. Adjust ease; baste. Stitch. Stitch again 1/4"(6mm) away in seam allowance. Trim close to second stitching. Turn seams toward sleeve.

37. Make buttonholes in cuff at markings. On OUTSIDE, sew buttons to front end of cuff at small dots.

SLEEVE C

38. **EASESTITCH** cap of SLEEVE (12) between end dots.

39. Stitch SLEEVE seam.

40. Machine-stitch 1/4"(6mm) from lower edge of sleeve, using long machine stitches, as shown. Press up a 5/8"(1.5cm) hem at lower edge of sleeve, turning under 1/4"(6mm) on raw edge. Pull thread to ease in fullness; stitch.

41. With RIGHT sides together, pin sleeve into armhole with center small dot at shoulder seam, matching underarm seams, notches and remaining small dots. Adjust ease; baste. Stitch. Stitch again 1/4"(6mm) away in seam allowance. Trim close to second stitching. Turn seams toward sleeve.



Congrats!

You've completed your sewing adventure

SHARE YOUR LOOK



Post your pattern and tag us
[@simplicity_creative_group](#) and [#simplicitypatterns](#)
for a chance to be featured on our social media.

Look for more PDF patterns at [simplicity.com](https://www.simplicity.com)

Have a question or need help with your sewing project call us at
1-888-588-2700



Simplicity ©2024 a division of IG Design Group Americas Inc. • Atlanta, GA 30342 USA www.thedesigngroup.com • All Rights Reserved. www.simplicity.com • Made in the U.S.A. Fabriqué aux États-Unis.

To be used for individual private home use only and not for commercial or manufacturing purposes. • A usage privé seulement et non à des fins commerciales ou de production en série. • Para uso privado solamente, no se puede utilizar con propósitos de comercialización o de producción en serie.