

S3003

Simplicity®

easy-to-sew



A



C



B



Designed and printed in USA.

Easy

MISSES' KNIT TOPS

Suggested Fabrics: A,B,C: Stretch Knits only such as Jersey, Ribbed Knit, Stretch Velvet, Sweater Knits. See Pick-A-Knit® Rule. **Contrast B also in:** Lace, Linen Types, Sheers, Silky Types.

Notions: A,B: One 9" (23cm) invisible zipper. C: One 7" (18cm) invisible zipper.

Sizes	6	8	10	12	14	16	18	20	22	24
European	32	34	36	38	40	42	44	46	48	50

BODY MEASUREMENTS: Select pattern size based on body measurements

Bust	30½	31½	32½	34	36	38	40	42	44	46	Ins.
Waist	23	24	25	26½	28	30	32	34	37	39	"
Hip-9" below waist	32½	33½	34½	36	38	40	42	44	46	48	"
Back-neck to waist	15½	15¾	16	16¼	16½	16¾	17	17¼	17½	17¾	"

Top A	60**	1¼	1¼	1¼	1¼	1¼	1¼	1¼	1¼	1¼	Yds.
Top B	60**	1	1	1	1¼	1¼	1¼	1¼	1¼	1¼	Yds.
Contrast (Sleeve Ruffle)											
45**	¾	¾	¾	¾	¾	¾	¾	¾	¾	¾	Yd.
60**	½	½	½	½	½	½	½	½	½	½	"

Top C	60**	1¼	1¼	1¼	1¼	1¼	1¼	1¼	1¼	1¼	Yds.
-------	------	----	----	----	----	----	----	----	----	----	------

FINISHED GARMENT MEASUREMENTS (Includes Design and Wearing Ease)

A,B,C Bust	31½	32½	33½	35	37	39	41	43	45	47	Ins.
A,B,C Waist	27½	28½	29½	31	33	35	37	39	41	43	"
Width, lower edge											
Top A	32½	33½	34½	36	38	40	42	44	46	48	Ins.
Top B,C	30½	31½	32½	34	36	38	40	42	44	46	"
Finished back length from base of neck											
Top A	23½	23¾	24	24¼	24½	24¾	25	25¼	25½	25¾	Ins.
Top B,C	19½	19¾	20	20¼	20½	20¾	21	21¼	21½	21¾	"

*with nap **without nap

Facile

HAUTS EN TRICOT POUR JEUNES FEMMES

Tissus Conseillés: A,B,C: Tricots extensibles seulement tels que Jersey, Tricot à côtes, Velours extensible, Tricots pour chandails. Reportez-vous à la règle Pick-A-Knit®.

Contraste B aussi en: Dentelle, Types toile de lin, Tissus transparents, Types soie.

Mercerie: A,B: 1 fermeture à glissière invisible de 23cm. C: 1 fermeture à glissière invisible de 18cm.

Tailles	6	8	10	12	14	16	18	20	22	24
Françaises	34	36	38	40	42	44	46	48	50	52
Européen	32	34	36	38	40	42	44	46	48	50

MESURES DU CORPS: Choisissez la taille du patron basée sur les mesures du corps

Poitrine	78	80	83	87	92	97	102	107	112	117	cm
Taille	58	61	64	67	71	76	81	87	94	99	"
Hanches (23cm au-dessous de la taille)											

	83	85	88	92	97	102	107	112	117	122	cm
--	----	----	----	----	----	-----	-----	-----	-----	-----	----

Dos du cou à la taille	39.5	40	40.5	41.5	42	42.5	43	44	44	44.5	"
------------------------	------	----	------	------	----	------	----	----	----	------	---

Haut A	150cm*	1.1	1.1	1.1	1.1	1.1	1.1	1.4	1.4	1.4	m
--------	--------	-----	-----	-----	-----	-----	-----	-----	-----	-----	---

Haut B	150cm*	0.9	0.9	0.9	1.0	1.0	1.0	1.3	1.3	1.3	m
--------	--------	-----	-----	-----	-----	-----	-----	-----	-----	-----	---

Contraste (Volante de la manche)											
----------------------------------	--	--	--	--	--	--	--	--	--	--	--

115cm*	0.6	0.6	0.6	0.6	0.7	0.7	0.7	0.7	0.7	0.7	m
--------	-----	-----	-----	-----	-----	-----	-----	-----	-----	-----	---

150cm*	0.5	0.5	0.5	0.5	0.5	0.5	0.5	0.5	0.5	0.5	"
--------	-----	-----	-----	-----	-----	-----	-----	-----	-----	-----	---

Haut C	150cm*	1.1	1.1	1.1	1.1	1.3	1.3	1.3	1.3	1.3	m
--------	--------	-----	-----	-----	-----	-----	-----	-----	-----	-----	---

MESURES DES VÊTEMENTS FINI (Motif et aisance de port compris)

A,B,C Poitrine	80	83	85	89	94	99	104	109	114	119	cm
----------------	----	----	----	----	----	----	-----	-----	-----	-----	----

A,B,C Taille	70	72	75	79	84	89	94	99	104	109	"
--------------	----	----	----	----	----	----	----	----	-----	-----	---

Largeur à l'ourlet											
--------------------	--	--	--	--	--	--	--	--	--	--	--

Haut A	83	85	88	91	97	102	107	112	117	122	cm
--------	----	----	----	----	----	-----	-----	-----	-----	-----	----

Haut B,C	77	80	83	86	91	97	102	107	112	117	"
----------	----	----	----	----	----	----	-----	-----	-----	-----	---

Longueur finie – dos, votre nuque à l'ourlet											
--	--	--	--	--	--	--	--	--	--	--	--

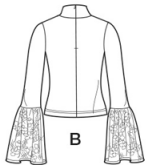
Haut A	60	60	61	62	62	63	64	64	65	65	cm
--------	----	----	----	----	----	----	----	----	----	----	----

Haut B,C	50	50	51	51	52	53	53	54	55	55	"
----------	----	----	----	----	----	----	----	----	----	----	---

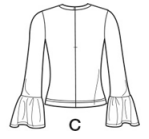
*avec sens **sans sens



A



B



C

Use the 1 inch (2.54cm) box to ensure you are using rule at 100%

Utilisez la boîte de 2.54 cm pour vous assurer d'utiliser la règle à 100%.

Utilizar un cuadrado de 2.54 cm para asegurarse de estar usando la regla a 100%.

PICK-A-KNIT® RULE

FOR THIS PATTERN - 4" (10 cm) OF KNIT FABRIC MUST STRETCH CROSSWISE FROM HERE
POUR CE PATRON - LE JERSEY DOIT S'ETIRER DANS LA LARGEUR DE 4" (10 cm) DEPUIS ICI
PARA ESTE PATRON - LAS MALLAS DEBEN ESTIRARSE A LO ANCHO POR 4" (10 cm) DESDE AQUI



TO HERE 50%
JUSQUE LA 50%
HASTA ALLA 50%



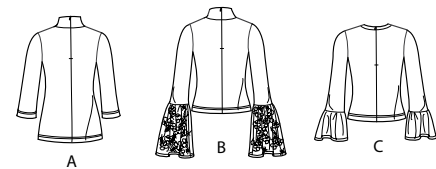
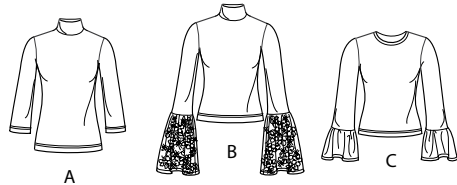
When using the Pick-A-Knit® rule to measure your fabrics stretch capacity, rule must be viewed or printed at 100%.

Quand vous utilisez la règle Pick-A-Knit® pour mesurer la capacité d'élasticité des tissus, la règle doit être visible ou imprimée à 100%.

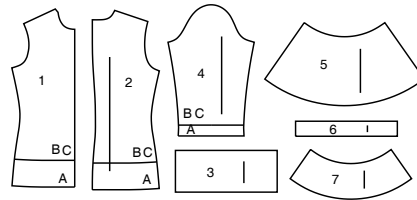
Al utilizar la regla Pick-A-Knit® para medir la capacidad de elasticidad de las telas, la regla debe estar visible o impresa al 100%.

Simplicity®

Thank you for purchasing this Simplicity pattern.
We made every effort to provide you with a high quality product.



7 PIECES



- 1 Front-A,B,C
2 Back-A,B,C
3 Neckband-A,B
4 Sleeve-A,B,C
5 Sleeve Ruffle-B
6 Neckband-C
7 Sleeve Ruffle-C



www.simplicity.com



info@simplicity.com



1-888-588-2700

General Directions

The Pattern

- SYMBOLS**
- ↔ GRAIN LINE Place on straight grain of fabric parallel to selvage
 - ↓ PLACE SOLID LINE on fold of fabric.
 - CENTER FRONT OR BACK of garment.
 - ▽ NOTCHES
 - DOTS
 - CUTTING LINE
 - == LENGTHEN OR SHORTEN LINES

SEAM ALLOWANCE: 5/8" (1.5cm) unless otherwise stated is included but not printed on MULTI-SIZE PATTERNS. Mark your size with colored felt tip pen. See chart on tissue for how to use MULTI-SIZE PATTERNS.

ADJUST IF NEEDED
Make adjustments before placing pattern on fabric.

TO LENGTHEN:
Cut pattern between lengthen or shorten lines. Spread pattern evenly, the amount needed and tape to paper.

TO SHORTEN:
At lengthen or shorten lines, make an even pleat taking up amount needed. Tape in place.

When lengthen or shorten lines are not given, make adjustments at lower edge of pattern.

Cutting/Marking

BEFORE CUTTING:
PRESS pattern pieces with a warm dry iron. PRE-SHRINK fabric by pre-washing washables or steam-pressing non-washables.

CIRCLE your cutting layout.

PIN pattern to fabric as shown in Cutting Layouts.

• FOR DOUBLE THICKNESS: Fold fabric with RIGHT sides together.

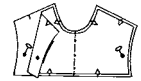
• FOR SINGLE THICKNESS: Place fabric RIGHT side up.

• FOR PILE, SHADED OR ONE WAY DESIGN FABRICS: Use "with nap" layouts

AFTER CUTTING:
Transfer markings to WRONG side of fabric before removing pattern. Use pin and chalk method or dressmaker's tracing paper and wheel.

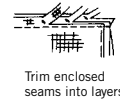
To Quick Mark:

- Snip edge of fabric to mark notches, ends of fold lines and center lines.
- Pin mark dots.



Sewing

- SEW garment following **Sewing Directions**.
- PIN or machine-baste seams matching notches.
- STITCH 5/8" (1.5 cm) seams unless otherwise stated.
- PRESS seams open unless otherwise indicated clipping when necessary so seams will lie flat.
- TRIM seams to reduce bulk, as shown below.



Trim enclosed seams into layers



Trim corners



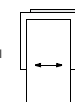
Clip inner curves



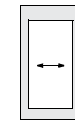
Notch outer curves

SPECIAL CUTTING NOTES

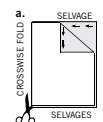
★ If layout shows a piece extending past fold, cut out all pieces except piece that extends.



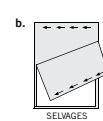
Open out fabric to single thickness. Cut extending piece on RIGHT side of fabric in position shown.



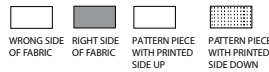
✱ Mark small arrows along both selvages indicating direction of nap or design. Fold fabric crosswise with RIGHT sides together, and cut along fold (a).



Turn one fabric layer around so arrows on both layers go in the same direction. Place RIGHT sides together (b).



Cutting Layouts



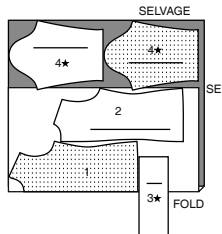
POSITION OF PATTERN PIECES MAY VARY SLIGHTLY ACCORDING TO YOUR PATTERN SIZE

NOTE: TOPS SIZED FOR STRETCH KNITS ONLY

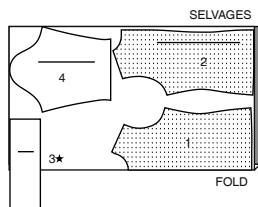
TOP A

USE PIECES 1 2 3 4

60" (150CM)
WITH NAP
SIZES 6 8 10 12 14 16



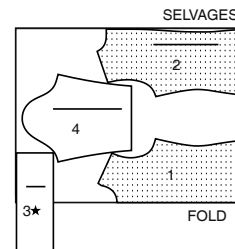
60" (150CM)
WITH NAP
SIZES 18 20 22 24



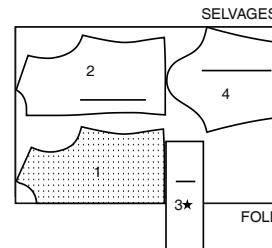
TOP B

USE PIECES 1 2 3 4

60" (150CM)
WITH NAP
SIZES 6 8 10 12 14 16



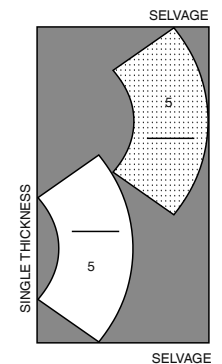
60" (150CM)
WITH NAP
SIZES 18 20 22 24



CONTRAST B: SLEEVE RUFFLE

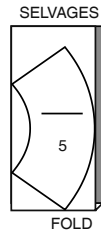
USE PIECE 5

45" (115CM)
WITH NAP
ALL SIZES



CUTTING LAYOUTS CONTINUED ON PAGE 2

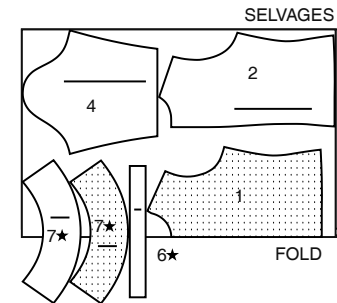
60" (150CM)
WITH NAP
ALL SIZES



TOP C

USE PIECES 1 2 4 6

60" (150CM)
WITH NAP
ALL SIZES



Sewing Directions

FABRIC KEY



Read **General Directions** on page 1 before you begin.

SIMPLY THE BEST SEWING TECHNIQUES...

FOR KNITS

- Use a ball point or stretch needle.
- Decrease pressure on presser foot for heavy sweater knits; increase pressure for lingerie knits.
- Stretch knits need seams that are supple enough to "give" with the fabric. You can sew them with straight stitches (stretching the fabric slightly as you sew), narrow zigzag stitches or one of the stretch stitches built into many conventional machines, or on your serger.
- Some knits require very little or no pressing while sewing. Use the appropriate temperature setting. Press lightly or use steam.
- To prevent shoulder seams from stretching, pin center of hem tape, clear elastic, or twill tape along seam line on front shoulder edges, then stitch the shoulder seams.
- Raw edges of hem and facings are left raw, unless using a serger.
- Use a twin sewing machine needle for a double stitched hem.

Sewing methods in **BOLD TYPE** have Sewing Tutorial Video available.

EASESTITCH/GATHER - See **Gathering: "sewing two row gathers"** video.

EDGESEW - See **Machine Stitches: "how to edgestitch"** video.

FRENCH SEAM - See **Seams: "how to sew a French seam"** video

GATHER - See **Gathering: "sewing gathering with yarn"** video.

NARROW HEM - See **Hems: "sewing narrow hems"** video.

TRIM - See **How to Sew: Trim, Clip, and Layer Seams** video.

SLEEVE - See **Armholes/Sleeves: "sewing a set in sleeve"** video.

PATTERN PIECES WILL BE IDENTIFIED BY NUMBERS THE FIRST TIME THEY ARE USED.

STITCH SEAMS WITH RIGHT SIDES TOGETHER UNLESS OTHERWISE STATED.

SEWING TUTORIALS

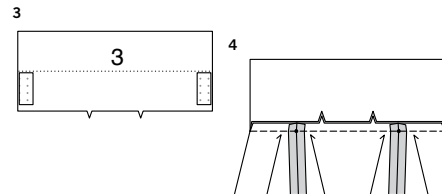
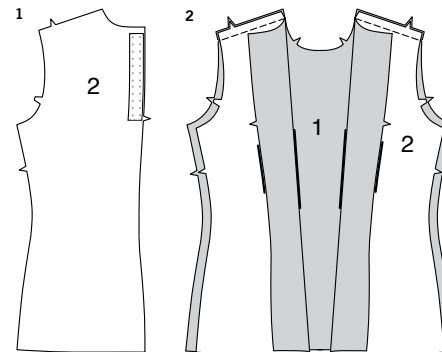


Build your skills viewing short, easy-to-follow videos at [simplicity.com/sewingtutorials](https://www.simplicity.com/sewingtutorials)

TOP A, B

NOTE: The first view mentioned will be illustrated unless otherwise indicated.

- 1. OPTIONAL** - To stabilize stretchy knits for zipper application, cut two remnants of fusible interfacing 1" (2.5cm) wide and the length of BACK (2) opening edges between raw neck edge and notch. Pin one strip to **WRONG** side of each BACK (2) section, having upper edge 1/2" (1.3cm) from upper raw edge and outer raw edges even; fuse in place following manufacturer's directions.
- Stitch FRONT (1) to BACK (2) sections at shoulders.



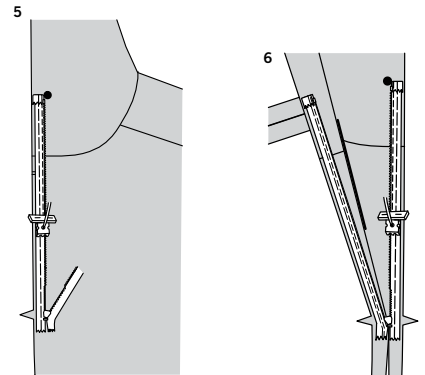
- 3. OPTIONAL** - Cut two more pieces of interfacing 1" (2.5cm) wide and the length of NECK BAND (3) between foldline and lower raw edge, less 1/2" (1.3cm). Fuse to **WRONG** side of neck band, having upper edge along foldline and outer raw edges even.

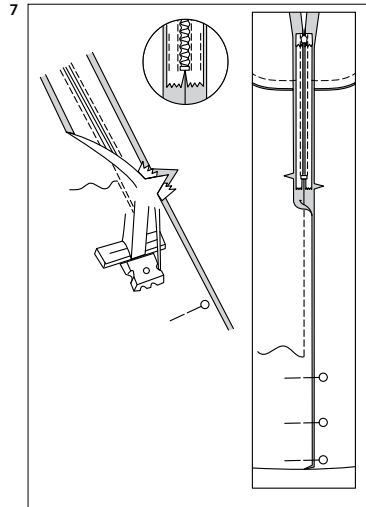
- With **RIGHT** sides together and raw edges even, pin one long edge of neck band to neck edge, matching centers notches and placing small dots at shoulder seams. Stitch, stretching band to fit. Turn seam toward top; lightly press at opening edges.

NOTE: Stitch the invisible zipper using an invisible zipper foot. For a How-to video, see **ZIPPER: "sewing an invisible zipper"**.

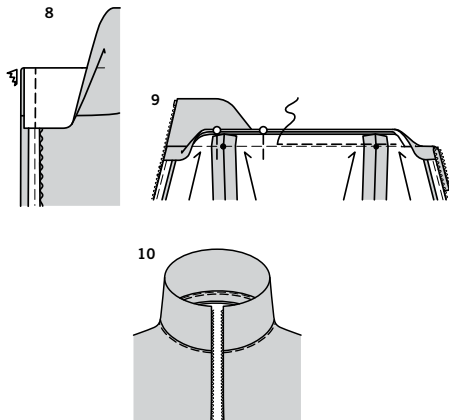
- Open zipper and press tape using a cool iron. On **OUTSIDE**, pin **RIGHT** side of zipper face down on **RIGHT** side of zipper opening. Have the coil along the seam line, the tape within the seam allowance and the top stop 1/8" (3mm) below large dot, as shown. Fold back zipper tape at upper edge, as shown. Hand-baste along center of the tape. Position zipper foot at the top of the zipper with **RIGHT** groove of the foot over coil. Stitch along tape to the notch. Back-stitch to reinforce.

- Pin remaining half of zipper to **LEFT** side of zipper opening in same manner. Make sure upper and lower edges of top are even. Hand-baste along center of tape. Position zipper foot at top of zipper with **LEFT** groove over coil. Stitch along tape to notch. Back-stitch to reinforce.





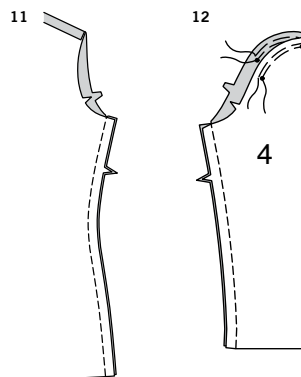
- 7.** Close zipper and check that it is invisible from the OUTSIDE. Pull free ends of zipper tape away from seam allowance. Pin remaining center back seam together below zipper. Position zipper foot all the way to the LEFT so the needle goes down through the outer notch of the foot. Start stitching seam 1/4" (6mm) above lowest stitch and slightly to the LEFT. Stitch seam for about 3" (7.5cm). Stitch remainder of seam using your regular presser foot. If you prefer, open out each seam allowance at end of zipper and stitch tape to seam allowance.



- 8.** Open out center back opening edges of top, rolling zipper teeth away from opening edge. Turn long free edge of neck band to OUTSIDE along foldline. Pin back opening edges together, matching seam lines at neck and having raw edges even. Using an adjustable zipper foot, stitch 1/2" (1.3cm) from back edges, keeping zipper teeth free. Trim free end of zipper tape even with raw edges.

- 9.** Turn corners of neckband RIGHT side out, turning free edge of band to INSIDE along foldline, forming a facing. Pin neck seam allowance of facing to previously stitched neck seam, matching centers front and small dots, having raw edges even. Stitch neck edges together close to previous stitching within seam allowance, stretching facing to fit and stitching as close to center back edges as possible.

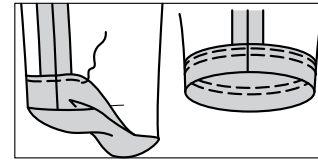
- 10.** On OUTSIDE, **EDGE STITCH** or zigzag top close to neck seam.



- 11.** Stitch front to back at side seams.

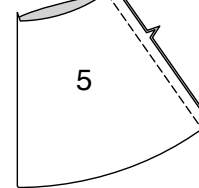
- 12.** **EASE STITCH** upper edge of SLEEVE (4) sections between outer small dots, stitching along seam line and 1/4" (6mm) away within seam allowance. Stitch underarm seam.

13

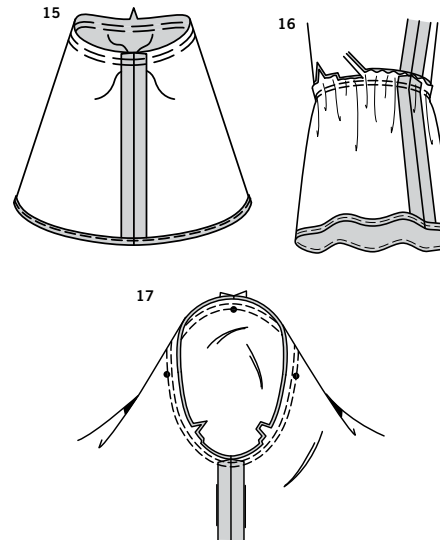


- 13.** **FOR VIEW A** - Press up 1-1/4" (3.2cm) hem on lower edge of sleeve. Stitch OR zigzag 1/4" (6mm) from raw edge and 1/4" (6mm) below first stitching.

14



- 14.** **FOR VIEW B** - Stitch ends of SLEEVE RUFFLE (5). **TIP** - For a sheer lace ruffle, consider stitching ends in a **FRENCH SEAM**.

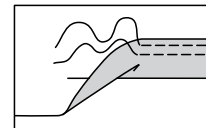


- 15.** **GATHER** upper edge of sleeve ruffle. Make a 5/8" (15cm) **NARROW HEM** on lower unnotched edge.

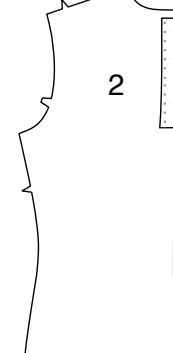
- 16.** Pin ruffle to lower edge of sleeve, matching underarm seams and notches. Adjust gathers to fit; baste. Stitch. Stitch again 1/4" (6mm) away from first stitching within seam allowance; trim close to second stitching. Press ruffle out, pressing seam toward sleeve.

- 17.** Stitch **SLEEVE** into armhole, having inner small dot at shoulder seams, matching underarm seams, and remaining small dots, adjusting ease to fit. Stitch again 1/4" (6mm) away from first stitching within seam allowance. Trim close to second stitching below notches.

18



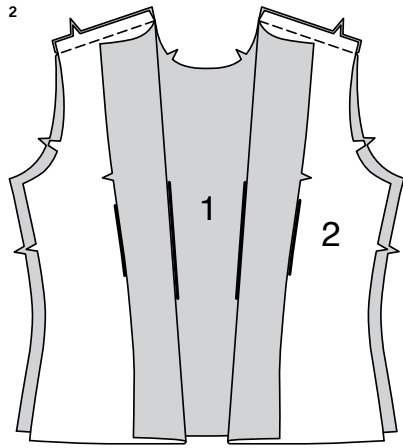
1



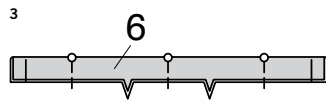
- 18.** Press up 1-1/4" (3.2cm) hem on lower edge of top. Stitch OR zigzag 1/4" (6mm) from raw edge and 1/4" (6mm) below first stitching.

TOP C

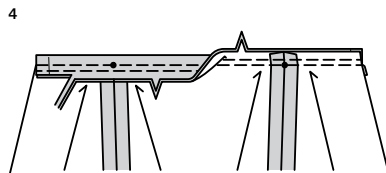
- 1. OPTIONAL** - To stabilize stretchy knits for zipper application, cut two remnants of fusible interfacing 1" (2.5cm) wide and the length of **BACK (2)** opening edges between raw neck edge and notch. Pin one strip to **WRONG** side of each **BACK (2)** section, having upper edge 1/2" (1.3cm) from upper raw edge and outer raw edges even; fuse in place following manufacturer's directions.



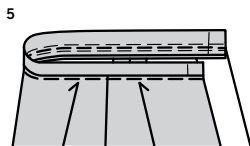
2. Stitch FRONT (1) to BACK (2) sections at shoulders.



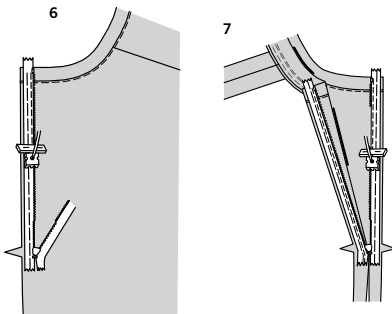
3. Fold NECK BAND (6) in half lengthwise, with WRONG sides together; pin. Baste ends.



4. On OUTSIDE, pin band to neck edge, matching centers, placing small dots at shoulder seams, and having raw edges even. Stitch, stretching the band to fit. Stitch again 1/4" (6mm) away from first stitching within the seam allowance. Trim seam close to second stitching. Press band out, pressing seam toward top.



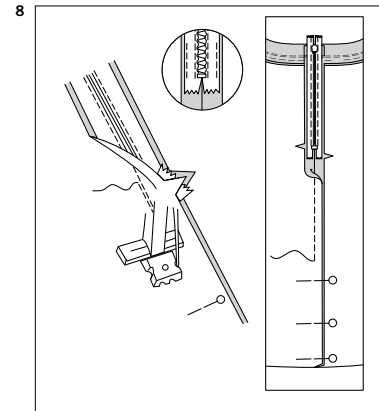
5. On OUTSIDE, **EDGE STITCH** or zigzag stitch top close to neck seam.



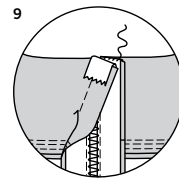
NOTE: *Stitch the invisible zipper using an invisible zipper foot. For a How-to video, see ZIPPER: "sewing an invisible zipper".*

6. Open the zipper and press the tape using a cool iron. On OUTSIDE, pin RIGHT side of zipper face down on RIGHT side of zipper opening. Have the coil along the seam line, the tape within the seam allowance and the top stop at upper edge. Hand-baste along center of tape. Position zipper foot at top of zipper with RIGHT groove of foot over coil. Stitch along tape to notch. Back-stitch to reinforce.

7. Pin remaining half of zipper to LEFT side of zipper opening in same manner. Make sure upper and lower edges of top are even. Hand-baste along center of tape. Position zipper foot at top of zipper with LEFT groove over coil. Stitch along tape to notch. Back-stitch to reinforce.



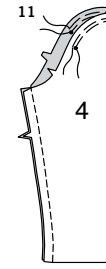
8. Close zipper and check that it is invisible from the OUTSIDE. Pull free ends of zipper tape away from seam allowance. Pin remaining center back seam together below zipper. Position zipper foot all the way to the LEFT so the needle goes down through the outer notch of the foot. Start stitching seam 1/4" (6mm) above lowest stitch and slightly to the LEFT. Stitch seam for about 3" (7.5cm). Stitch remainder of seam using your regular presser foot. If you prefer, open out each seam allowance at end of zipper and stitch tape to seam allowance.



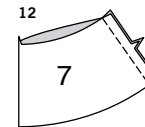
9. Turn upper ends of zipper tape over seam allowances. Hand-sew to neck band, being careful not to let stitches show on OUTSIDE.



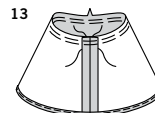
10. Stitch front to back at side seams.



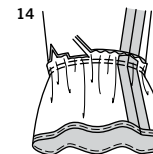
11. **EASE STITCH** upper edge of SLEEVE (4) sections between outer small dots, stitching along seam line and 1/4" (6mm) away within seam allowance. Stitch underarm seam.



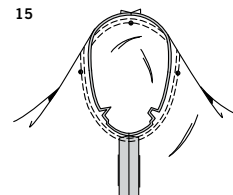
12. Stitch ends of SLEEVE RUFFLE (7).



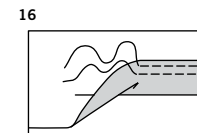
13. **GATHER** upper edge of sleeve ruffle. Make a 5/8" (1.5cm) **NARROW HEM** on lower unnotched edge.



14. Pin ruffle to lower edge of sleeve, matching underarm seams and notches. Adjust gathers to fit; baste. Stitch. Stitch again 1/4" (6mm) away from first stitching within seam allowance; trim close to second stitching.



15. Stitch SLEEVE into armhole, having inner small dot at shoulder seams, matching underarm seams and remaining small dots, adjusting ease to fit. Stitch again 1/4" (6mm) away from first stitching within seam allowance. Trim close to second stitching below notches.



16. Press up 1-1/4" (3.2cm) hem on lower edge of top. Stitch OR zigzag 1/4" (6mm) from raw edge and 1/4" (6mm) below first stitching.



Congrats!

You've completed your sewing adventure

SHARE YOUR LOOK



Post your pattern and tag us
[@simplicity_creative_group](#) and [#simplicitypatterns](#)
for a chance to be featured on our social media.

Look for more PDF patterns at [simplicity.com](https://www.simplicity.com)

Have a question or need help with your sewing project call us at
1-888-588-2700



Simplicity ©2024 a division of IG Design Group Americas Inc. • Atlanta, GA 30342 USA www.thedesigngroup.com • All Rights Reserved. www.simplicity.com • Made in the U.S.A. Fabriqué aux États-Unis.

To be used for individual private home use only and not for commercial or manufacturing purposes. • A usage privé seulement et non à des fins commerciales ou de production en série. • Para uso privado solamente, no se puede utilizar con propósitos de comercialización o de producción en serie.