

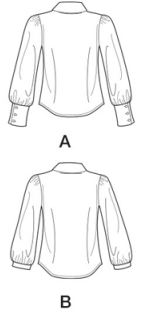
S3002

**Simplicity®**



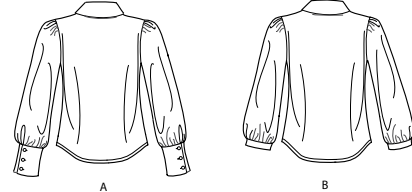
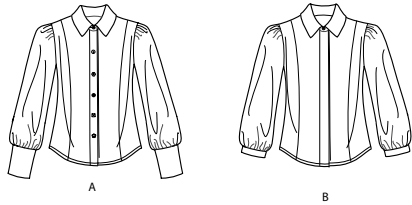
Designed and printed in USA.

Average															Moins Facile															
MISSES' AND WOMEN'S BLOUSES															CHEMISIERS POUR JEUNES FEMMES ET FEMMES															
Suggested Fabrics: Lightweight Denim, Linen Types, Poplin, Sateen, Shirtings, Silky Types. Interfacing: Lightweight Fusible.															Tissus Conseillés: Denim Léger, Types toile de lin, Popeline, Satinette, Shirtings, Types soie. Entoilage: Thermocollant léger.															
Notions: A,B: Five ½" (1.3cm) buttons. Also for A: Twelve ¾" (1.5cm) decorative buttons (assorted or uniform). Also for B: Six ¾" (1.5cm) decorative buttons (assorted or uniform).															Mercerie: A,B: 5 boutons de 1.3cm. Aussi pour A: 12 boutons décoratifs (assortis ou uniformes). Aussi pour B: 6 boutons décoratifs (assortis ou uniformes).															
MISSES' SIZES		10	12	14	16	18									TAILLES (J. FEMMES)		10	12	14	16	18									
EUROPEAN		36	38	40	42	44									FRANÇAISES		38	40	42	44	46									
															EUROPÉEN		36	38	40	42	44									
BODY MEASUREMENTS: Select pattern size based on body measurements															MESURES DU CORPS: Choisissez la taille du patron basée sur les mesures du corps															
Bust		32½	34	36	38	40	Ins.								Poitrine		83	87	92	97	102						cm			
Waist		25	26½	28	30	32	"								Taille		64	67	71	76	81						"			
Hip-9" below waist		34½	36	38	40	42	"								Hanches (23cm au-dessous de la taille)															
Back-neck to waist		16	16¼	16½	16¾	17	"										88	92	97	102	107						cm			
														Dos du cou à la taille		40.5	41.5	42	42.5	43						"				
Blouse A		45**	2¼	2¼	2¼	2¼	Yds.								Chemisier A		115cm*	2.1	2.1	2.1	2.4	2.4						m		
		60**	1¾	1¾	1¾	1¾	"										150cm*	1.6	1.6	1.6	1.6	1.6						"		
Interfacing - 20" - 1¼ yds.															Entoilage 51cm - 1.1m															
Blouse B		45**	2¼	2¼	2¼	2¼	Yds.								Chemisier B		115cm*	1.9	1.9	1.9	2.2	2.2						m		
		60**	1¾	1¾	1¾	1¾	"										150cm*	1.4	1.4	1.6	1.6	1.7						"		
Interfacing - 20" - 1¼ yds.															Entoilage - 51cm - 1.3m															
WOMEN'S SIZES		20W	22W	24W	26W	28W	30W	32W	34W	36W	38W						TAILLES (FEMMES)		20W	22W	24W	26W	28W	30W	32W	34W	36W	38W		
EUROPEAN		46	48	50	52	54	56	58	60	62	64						FRANÇAISES		48	50	52	54	56	58	60	62	64	66		
																	EUROPÉEN		46	48	50	52	54	56	58	60	62	64		
BODY MEASUREMENTS: Select pattern size based on body measurements															MESURES DU CORPS: Choisissez la taille du patron basée sur les mesures du corps															
Bust		42	44	46	48	50	52	54	56	58	60	Ins.				Poitrine		107	112	117	122	127	132	137	142	147	152	cm		
Waist		35	37	39	41½	44	46½	49	51½	53	54½	"				Taille		89	94	99	105	112	118	124	130	134	138	"		
Hip-9" below waist		44	46	48	50	52	54	56	58	60	62	"				Hanches (23cm au-dessous de la taille)														
Back-neck to waist		17¼	17½	17¾	17¾	17¾	18	18½	18¾	18¾	"						112	117	122	127	132	137	142	147	152	157	cm			
															Dos du cou à la taille		44	44	44.5	45	45	45.5	46	46	46.5	47	"			
Blouse A		45**	3	3¼	3¼	3¼	3¼	3¼	3¼	3¼	3¼	Yds.				Chemisier A		115cm*	2.7	2.9	3.0	3.1	3.4	3.4	3.4	3.5	3.5	m		
		60**	2¾	2¾	2¾	2¾	2¾	2¾	2¾	2¾	2¾	"						150cm*	2.2	2.2	2.2	2.2	2.3	2.3	2.4	2.5	2.5	"		
Interfacing - 20" - 1¼ yds.																Entoilage - 51cm - 1.3m														
Blouse B		45**	2¼	2¼	2¼	2¼	3¼	3¼	3¼	3¼	3¼	Yds.				Chemisier B		115cm*	2.4	2.4	2.4	2.5	3.1	3.2	3.2	3.2	3.3	m		
		60**	2¼	2¼	2¼	2¼	2¼	2¼	2¼	2¼	2¼	"						150cm*	2.1	2.1	2.2	2.2	2.2	2.3	2.3	2.3	2.4	"		
Interfacing - 20" - 1¼ yds.																Entoilage - 51cm - 1.5m														
NOTE: Please refer to the sewing instructions for FINISHED GARMENT MEASUREMENTS.																NOTE: S'il vous plaît, reportez-vous aux instructions de couture pour les MESURES DU VÊTEMENTS FINI.														
*with nap **without nap																*avec sens **sans sens														

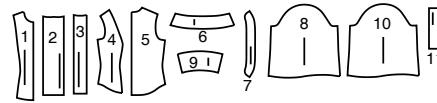


# Simplicity®

Thank you for purchasing this Simplicity pattern.  
We made every effort to provide you with a high quality product.



11 PIECES



- 1 Front-A,B
- 2 Right Front Band-A,B
- 3 Left Front Band-A,B
- 4 Side Front-A,B
- 5 Back-A,B
- 6 Collar-A,B
- 7 Collar Band-A,B
- 8 Sleeve-A
- 9 Cuff-A
- 10 Sleeve-B
- 11 Sleeve Band-B

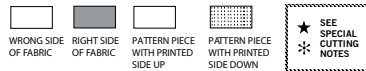
MISSIES' SIZES	10	12	14	16	18
EUROPEAN	36	38	40	42	44

FINISHED GARMENT MEASUREMENTS (Includes Design and Wearing Ease)						
A,B Bust	36%	38	40	42	44	Ins. *
A,B Waist	29%	31	33	35	37	
Finished back length from base of neck						
Top A,B	23	23%	23%	23%	24	Ins.

WOMEN'S SIZES	20W	22W	24W	26W	28W	30W	32W	34W	36W	38W
EUROPEAN	46	48	50	52	54	56	58	60	62	64

FINISHED GARMENT MEASUREMENTS (Includes Design and Wearing Ease)											
A,B Bust	46	48	50	52	54	56	58	60	62	64	Ins. *
A,B Waist	38%	40%	42%	44%	46%	48%	50%	52%	54%	56%	
Finished back length from base of neck											
Top A,B	26%	26%	26%	27	27%	27%	27%	28	28%	28%	Ins.

## Cutting Layouts

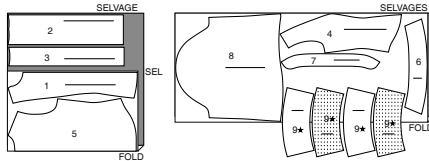


POSITION OF PATTERN PIECES MAY VARY  
SLIGHTLY ACCORDING TO YOUR PATTERN SIZE

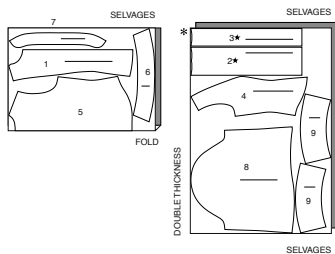
### TOP A

USE PIECES 1 2 3 4 5 6 7 8 9

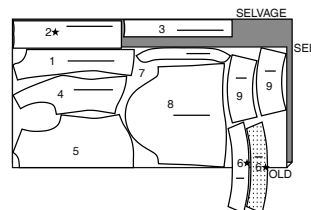
45" (115CM)  
WITH NAP  
SIZES 10 12 14



CUT ONE EACH OF PIECE 2 AND 3  
45" (115CM)  
WITH NAP  
SIZES 16 18



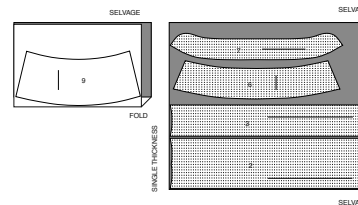
60" (150CM)  
WITH NAP  
ALL SIZES  
CUT ONE OF PIECE 2



### INTERFACING A

USE PIECES 2 3 6 7 9

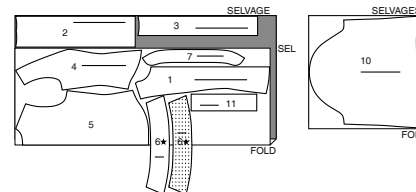
20" (51CM)  
ALL SIZES



### TOP B

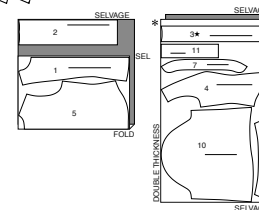
USE PIECES 1 2 3 4 5 6 7 10 11

45" (115CM)  
WITH NAP  
SIZES 10 12 14



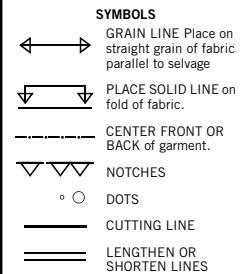
45" (115CM)  
WITH NAP  
SIZES 16 18

CUT ONE OF PIECE 3



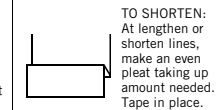
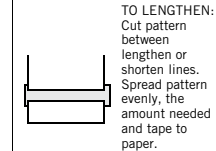
## General Directions

### The Pattern



SEAM ALLOWANCE: 5/8" (1.5cm)  
unless otherwise stated is included but not printed on MULTI-SIZE PATTERNS.  
Mark your size with colored felt tip pen.  
See chart on tissue for how to use MULTI-SIZE PATTERNS.

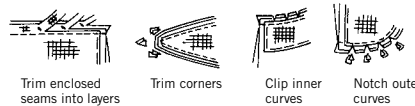
**ADJUST IF NEEDED**  
Make adjustments before placing pattern on fabric.



When lengthen or shorten lines are not given, make adjustments at lower edge of pattern.

### Sewing

- SEW garment following **Sewing Directions**.
- PIN or machine-baste seams matching notches.
- STITCH 5/8" (1.5 cm) seams unless otherwise stated.
- PRESS seams open unless otherwise indicated clipping when necessary so seams will lie flat.
- TRIM seams to reduce bulk, as shown below.



### Cutting/Marking

**BEFORE CUTTING:**  
PRESS pattern pieces with a warm dry iron. PRE-SHRINK fabric by pre-washing washables or steam-pressing non-washables.

CIRCLE your cutting layout.

PIN pattern to fabric as shown in Cutting Layouts.

• FOR DOUBLE THICKNESS: Fold fabric with RIGHT sides together.

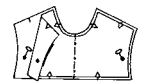
• FOR SINGLE THICKNESS: Place fabric RIGHT side up.

• FOR PILE, SHADED OR ONE WAY DESIGN FABRICS: Use "with nap" layouts

**AFTER CUTTING:**  
Transfer markings to WRONG side of fabric before removing pattern. Use pin and chalk method or dressmaker's tracing paper and wheel.

### To Quick Mark:

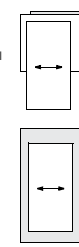
- Snip edge of fabric to mark notches, ends of fold lines and center lines.
- Pin mark dots.



### SPECIAL CUTTING NOTES

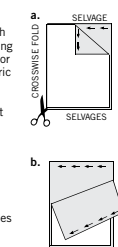
★ If layout shows a piece extending past fold, cut out all pieces except piece that extends.

Open out fabric to single thickness. Cut extending piece on RIGHT side of fabric in position shown.

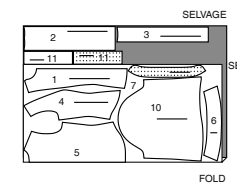


✱ Mark small arrows along both selvages indicating direction of nap or design. Fold fabric crosswise with RIGHT sides together, and cut along fold (a).

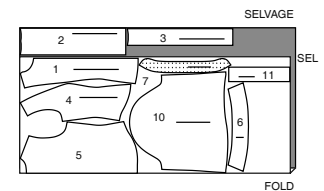
Turn one fabric layer around so arrows on both layers go in the same direction. Place RIGHT sides together (b).



60" (150CM)  
WITH NAP  
SIZES 10 12



60" (150CM)  
WITH NAP  
SIZES 14 16 18

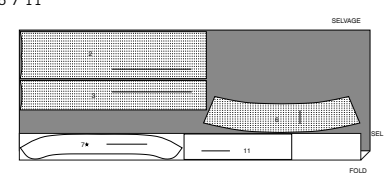


### INTERFACING B

USE PIECES 2 3 6 7 11

20" (51CM)  
ALL SIZES

CUT ONE OF  
PIECE 7

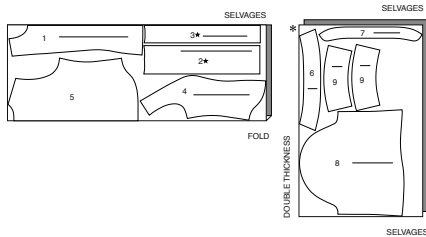


CUTTING LAYOUTS CONTINUED ON PAGE 2

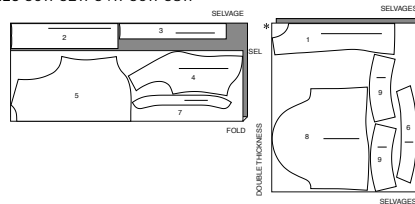
**TOP A**

USE PIECES 1 2 3 4 5 6 7 8 9

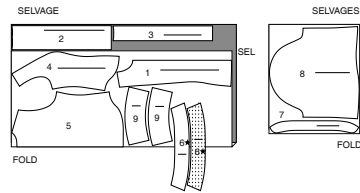
45" (115CM)  
WITH NAP  
SIZES 20W 22W 24W 26W 28W  
CUT ONE EACH OF PIECE 2 AND 3



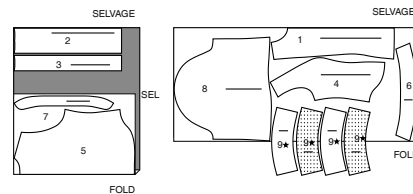
45" (115CM)  
WITH NAP  
SIZES 30W 32W 34W 36W 38W



60" (150CM)  
WITH NAP  
SIZES 20W 22W 24W 26W 28W 30W

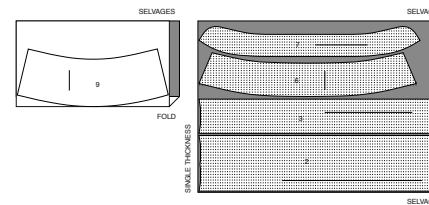


60" (150CM)  
WITH NAP  
SIZES 32W 34W 36W 38W

**INTERFACING A**

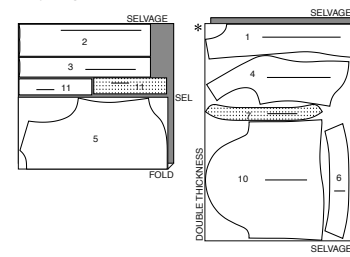
USE PIECES 2 3 6 7 9

20" (51CM)  
ALL SIZES

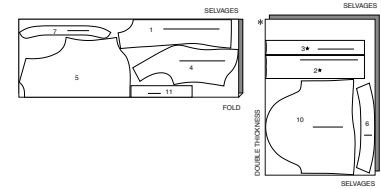
**TOP B**

USE PIECES 1 2 3 4 5 6 7 10 11

45" (115CM)  
WITH NAP  
SIZES 20W 22W 24W 26W 28W

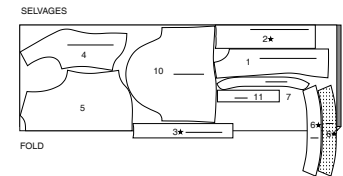


45" (115cm)  
WITH NAP  
SIZES 30W 32W 34W 36W 38W  
CUT ONE EACH OF PIECE 2 AND 3



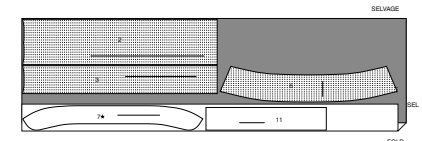
60" (150CM)  
WITH NAP  
ALL SIZES

CUT ONE OF PIECE 2

**INTERFACING B**

USE PIECES 2 3 6 7 11

CUT ONE OF PIECE 7  
20" (51CM)  
ALL SIZES

**Sewing Directions**

**FABRIC KEY** RIGHT SIDE WRONG SIDE INTERFACING LINING LINING

Sewing methods in **BOLD TYPE** have Sewing Tutorial Video available.  
Scan **QR CODE** to watch videos:

**DART** - See Darts: "sewing double pointed dart" video.  
**GATHER** - See Gathering: "sewing two row gathers" video.  
**EDGESTITCH** - See Machine Stitches: "how to edgestitch" video.  
**NARROW HEM** - See Hems: "sewing narrow hems" video.  
**REINFORCE** - See Machine Stitches: "how to reinforce" video.  
**STAYSTITCH** - See Machine Stitches: "how to do stay-stitching" video.  
**TRIM** - See How to Sew: Trim, Clip, and Layer Seams" video.  
**UNDERSTITCH** - See Machine Stitches: "how to understitch" video.  
**SLEEVE** - See Armholes/Sleeves: "sewing a set-in sleeve" video.  
**PATTERN PIECES WILL BE IDENTIFIED BY NUMBERS THE FIRST TIME THEY ARE USED.**

**STITCH 5/8" (1.5CM) SEAMS WITH RIGHT SIDES TOGETHER UNLESS INDICATED.**

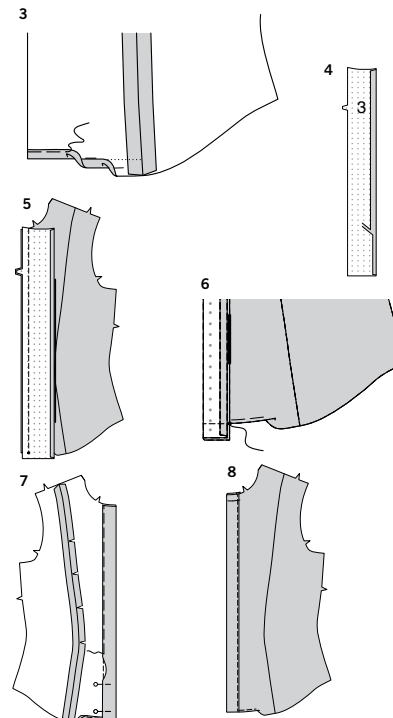
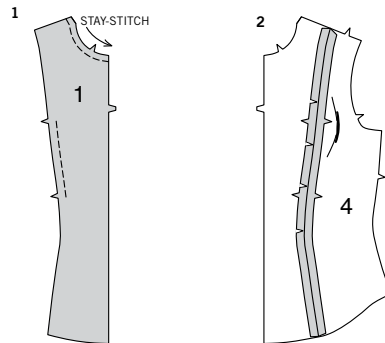
**TOP A, B**

- 1. STAYSTITCH** neck edge of **FRONT (1)** 1/2" (1.3cm from cut edge in direction of arrows.  
**STAYSTITCH** side edge between notches.
- Pin **SIDE FRONT (4)** to front, matching notches, clipping front where necessary.  
Stitch.  
Press seam open.  
Clip curves if necessary.

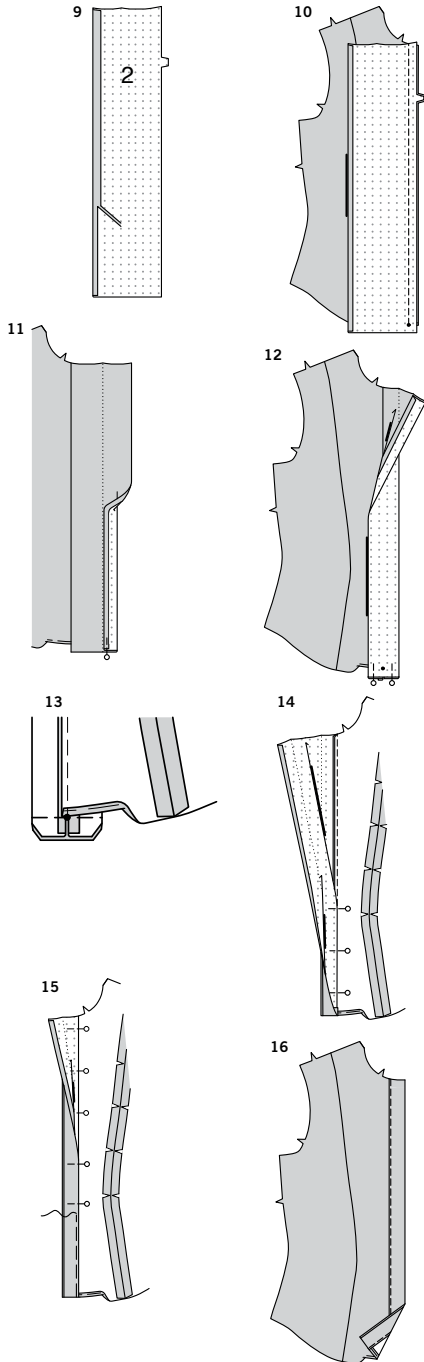
## SEWING TUTORIALS



Build your skills viewing short, easy-to-follow videos at  
[simplicity.com/sewingtutorials](https://www.simplicity.com/sewingtutorials)



- Press up 5/8" (1.5cm) hem allowance on lower front edge, as shown.  
To form **NARROW HEM**, tuck under raw edge to meet crease; press.  
Hand-baste hem in place for a couple of inches, starting at front edge. The hem will be completed in a later step.
- Apply interfacing to **WRONG** side of **LEFT FRONT BAND (3)**, following manufacturer's directions.  
Press under 5/8" (1.5cm) on long unnotched edge; trim to 3/8" (1cm).
- With **RIGHT** sides together and raw edges even, stitch left band to **LEFT** front, matching double notches and small dots; stitch. **TRIM** seam.  
Press band out, pressing seam toward band.
- Turn band to **OUTSIDE** along foldline, matching small dots, having **RIGHT** sides together and raw edges even.  
Stitch lower edges together to small dot, back-stitching at small dot to reinforce seam.  
**TRIM** seam.
- Turn band to **INSIDE** along foldline, forming a placket; press.  
Pin pressed edge over seam; baste, removing pins as you come to them.
- On **OUTSIDE**, **EDGESTITCH** placket close to seam, catching in pressed edge on **INSIDE**; remove basting.



**9.** Apply interfacing to **WRONG** side of **RIGHT FRONT BAND** (2), following manufacture's directions. Press under 5/8" (1.5cm) on long unnotched edge of band; trim to 3/8" (1cm).

**10.** With **RIGHT** sides together and raw edges even, stitch right band to **RIGHT** front, matching double notches and small dots; stitch **TRIM** seam. Press band out, pressing seam toward band.

**11.** Have the **RIGHT** side of the right front facing up towards you. Turn band to **OUTSIDE** along outermost foldline, bringing pressed edge to inner foldline, having raw edges even. Pin lower raw edges together. **TIP**-Before stitching band to front, mark inner and outer foldlines with long hand-basting stitches or with a washable fabric marker pen or pencil. This will help you align foldlines when forming plackets.

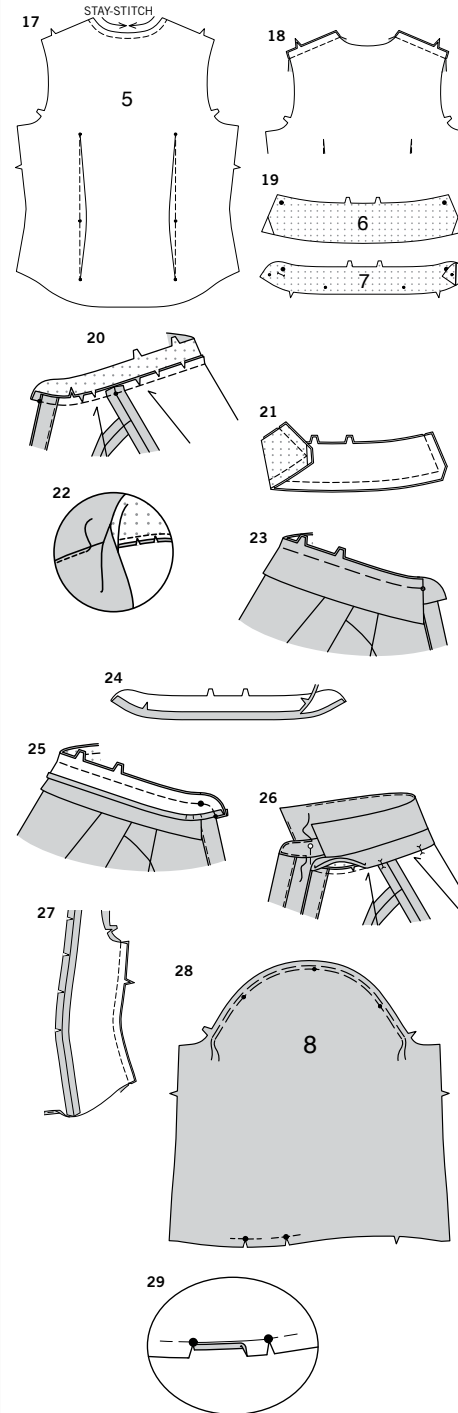
**12.** Turn band to **OUTSIDE** again along remaining outer foldline, bringing inner foldline to front seam, matching small dots. Pin lower raw edges together.

**13.** Turn front to **WRONG** side. Check to see that the front seam is aligned with the inner foldline. Stitch lower raw edges of band together, keeping front and front seam allowance out of the way. **TRIM** seam and corners.

**14.** Turn corners **RIGHT** side out. Start folding band in an accordion-like manner, folding outward along outer foldlines and inward along inner foldline, as shown. Press folds. Pin inner fold exactly over front seam.

**15.** Pin remaining free edge of band over seam; hand-baste placket close to inner edge through all thicknesses, removing pins as you come to them. You have now formed an outer placket and a hidden inner placket. (You will notice that inner placket is about 1/8" (3mm) narrower than the outer placket.)

**16.** On **OUTSIDE**, **EDGE****STITCH** placket close to seam, catching in inner edges of plackets. Remove basting.



**17.** **STAY****STITCH** neck edge of **BACK** (5).

To make **double pointed DART**, fold fabric through center of dart, bringing broken lines and small dots together. Stitch dart from middle to one point, then middle to remaining point, overlapping several stitches at center. Press dart toward center. If necessary, carefully clip the dart at its widest point so that it will lay flat.

**18.** Stitch back to front sections at shoulders.

**19.** Apply fusible interfacing to **WRONG** side of one **COLLAR** (6) and one **COLLAR** (7) section, following manufacturer's directions. The non-interfaced sections will be used as facings.

**20.** Clip neck edge of top to stay-stitching. With **RIGHT** sides together, pin single notched edge of collar band to neck edge, placing inner small dots at shoulder seams, matching centers back and remaining small dots. (Neckband extends 5/8" (1.5cm) beyond front opening edges.) Stitch neck edge. **TRIM** seam; clip curves. Press band out; press seam toward band.

**21.** With **RIGHT** sides together and raw edges even, stitch facing to collar, leaving notched edges open. **TRIM** seam and corners.

**22.** **UNDER****STITCH** collar by stitching through collar and seam allowance close to seam as far as possible.

**23.** Turn collar; press. Machine-baste raw edges together. With **RIGHT** sides together and raw edges even, pin collar (facing side) to collar band, matching centers back, double notches, and large dots. Baste.

**24.** Press under 5/8" (1.5cm) on single notched edge of collar band facing; trim to 3/8" (1cm).

**25.** With **RIGHT** sides together and raw edges even, pin band facing to band (over collar), matching centers and large dots. Stitch front and double notched edge. **TRIM** seam; clip curves.

**26.** Turn band facing to **INSIDE**; press. Pin pressed edge of facing over seam, placing pins on **OUTSIDE** or hand-basting in place. On **OUTSIDE**, **EDGE****STITCH** all edges of band, catching in pressed edge of facing **INSIDE**.

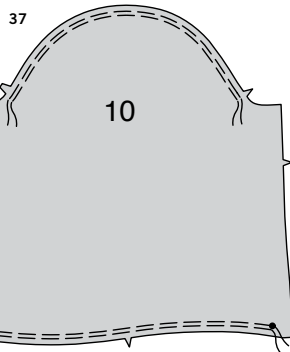
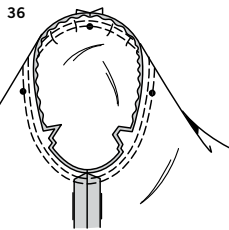
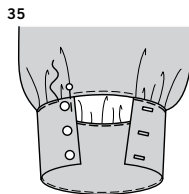
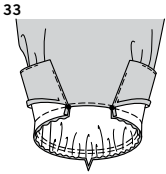
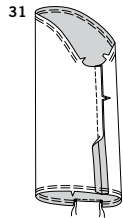
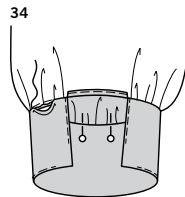
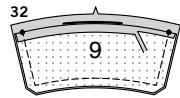
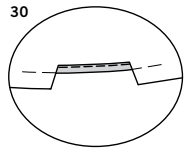
**27.** Stitch back to front sections at sides.

## SLEEVES A

**28.** **GATHER** upper edge of **SLEEVE** (8) between notches along 5/8" (1.5cm) seam line and 1/4" (6mm) **INSIDE** seam allowance, using a long machine-stitch.

To **REINFORCE** lower edge at large dots, stitch along seam line for 1" (2.5cm) on each large dot, stitching through dots, as shown. Clip to stitching at dots, being careful not to clip through stitching.

**29.** Turn clipped edge (between dots) to **INSIDE** so it just meets stitching; press.



**30.** Turn pressed edge to **INSIDE** again along stitching; press. Stitch close to edge, as shown.

**31.** Stitch underarm seam of sleeve.  
**GATHER** lower edge between large dots.

**32.** For facings, apply interfacing to **WRONG** side of two opposing **CUFF (9)** sections.  
Press under 5/8" (1.5cm) on notched edge of each facing; trim to 3/8" (1cm).  
With **RIGHT** sides together, stitch facing to cuff, leaving notched edge open.  
**TRIM** seam and corners.

**33.** Turn cuff facing to **INSIDE**; press.  
**UNDERSTITCH** facing as far as possible.  
With **RIGHT** sides together, pin sleeve to cuff, matching large dots. Pull up gathering stitches to fit. Baste.  
Stitch, keeping pressed edge of facing out of the way.  
**TRIM** seam. Press, pressing seam toward cuff.

**34.** On **INSIDE**, pin pressed edge of facing over seam and **SLIPSTITCH** in place.

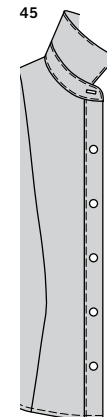
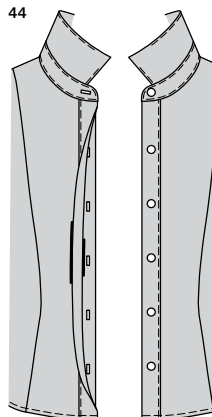
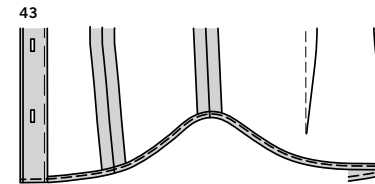
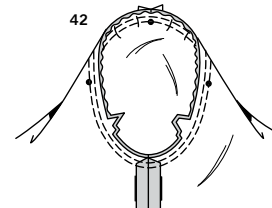
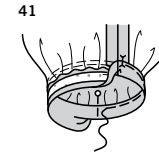
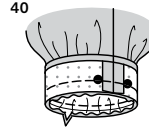
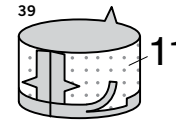
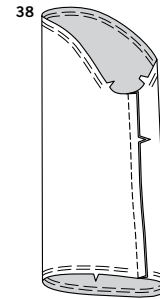
OR

**35.** Placing pins on **OUTSIDE**, **EDGE STITCH** cuff close to seam, catching in pressed edge of facing on **INSIDE**.  
Make buttonholes at markings. Sew buttons at small dots.

**36.** Turn **SLEEVE RIGHT** side out.  
Hold top **WRONG** side out with armhole toward you.  
With **RIGHT** sides together, pin sleeve to armhole edge with center small dot at shoulder seam, matching underarm seams, notches and remaining small dots. Pull up gathering stitches to fit.  
To distribute fullness evenly, slide fabric along bobbin threads. Baste. Stitch. Stitch again 1/8" (3mm) from first stitching.  
Trim seam below notches close to stitching.  
Press only the seam allowance.

#### SLEEVES B

**37.** **GATHER** upper edge of **SLEEVE (10)** between notches along 5/8" (1.5cm) seam line and 1/4" (6mm) **INSIDE** seam line, using a long machine-stitch.  
**GATHER** lower edge of sleeve between large dots.



**38.** Stitch underarm seam.

**39.** Apply interfacing to **WRONG** side of **SLEEVE BAND (11)**.  
Stitch notched ends of sleeve band together.  
Press under 5/8" (1.5cm) on unnotched edge; trim to 3/8" (1cm).

**40.** With **RIGHT** sides together, pin sleeve band to lower edge of sleeve, matching seams, and large dots. Pull up gathering stitches to fit. Baste. Stitch seam.  
**TRIM** seam. Press seam toward band.

**41.** On **INSIDE**, pin pressed edge of band over seam, placing pins on **OUTSIDE** or hand-basting in place.  
On **OUTSIDE**, **EDGE STITCH** band close to seam, catching in pressed edge of band on **INSIDE**.

**42.** Turn **SLEEVE RIGHT** side out.  
Hold top **WRONG** side out with armhole toward you.  
With **RIGHT** sides together, pin sleeve to armhole edge with center small dot at shoulder seam, matching underarm seams, notches and remaining small dots. Pull up gathering stitches to fit.  
To distribute fullness evenly, slide fabric along bobbin threads. Baste. Stitch. Stitch again 1/8" (3mm) from first stitching.  
Trim seam below notches close to stitching.  
Press only the seam allowance.

#### CONTINUE AS FOLLOWS FOR VIEWS A, B

**43.** Stitch **NARROW HEM** on lower edge, carrying stitching to ends of placket, as shown. Remove basting.

**44.** Make buttonholes on **RIGHT** neck band and at inner placket at markings.  
Sew buttons to **LEFT** placket at small dots.  
Sew decorative button to **LEFT** neck band.

**45.** Sew decorative buttons to outer right placket at small dots, being careful not to catch in inner placket.





# Congrats!

You've completed your sewing adventure

---

## SHARE YOUR LOOK



Post your pattern and tag us  
[@simplicity\\_creative\\_group](#) and [#simplicitypatterns](#)  
for a chance to be featured on our social media.

Look for more PDF patterns at [simplicity.com](https://www.simplicity.com)

Have a question or need help with your sewing project call us at  
1-888-588-2700



Simplicity ©2024 a division of IG Design Group Americas Inc. • Atlanta, GA 30342 USA [www.thedesigngroup.com](https://www.thedesigngroup.com) • All Rights Reserved. [www.simplicity.com](https://www.simplicity.com) • Made in the U.S.A. Fabriqué aux États-Unis.

To be used for individual private home use only and not for commercial or manufacturing purposes. • A usage privé seulement et non à des fins commerciales ou de production en série. • Para uso privado solamente, no se puede utilizar con propósitos de comercialización o de producción en serie.