

S3001

**Simplicity®**

*easy-to-sew*



A



B

Designed and printed in USA.



Easy

**MISSES' DRESSES**

**Suggested Fabrics:** Chambray, Cotton Blends, Crepe de Chine, Linen Blends, Poplin, Satin, Silky Types.

**Notions:** A,B: 1 yd. (0.9m) of ½" (1.3cm) elastic.

Sizes	8	10	12	14	16	18	20	22	24	26
European	34	36	38	40	42	44	46	48	50	52

**BODY MEASUREMENTS:** Select pattern size based on body measurements

Bust	31½	32½	34	36	38	40	42	44	46	48	Ins.
Waist	24	25	26½	28	30	32	34	37	39	41½	"
Hip-9" below waist	33½	34½	36	38	40	42	44	46	48	50	"
Back-neck to waist	15¾	16	16¼	16½	16¾	17	17¼	17½	17¾	17¾	"

Dress A	45**	2½	2½	2½	2½	3½	3½	3½	3½	3½	3½	Yds.
60**	2½	2½	2½	2½	2½	2½	2½	2½	2½	2½	2½	"
Dress B	45**	4	4	4	4½	4½	4½	5	5½	5½	5½	Yds.
60**	3½	3½	3½	3½	3½	3½	3½	3½	3½	3½	3½	"

**FINISHED GARMENT MEASUREMENTS (Includes Design and Wearing Ease)**

A,B Bust	47	48	49½	51½	53½	55½	57½	59½	61½	63½	Ins.
Width, lower edge											
Dress A	60%	61%	63%	65%	67%	69%	71%	73%	75%	77%	Ins.
Dress B	73%	74%	75%	77%	79%	81%	83%	85%	87%	89%	"
Finished back length from base of neck											
Dress A	33%	34	34½	34½	34½	35	35½	35½	35½	36	Ins.
Dress B	51%	52	52½	52½	52½	53	53½	53½	53½	54	"

\*with nap \*\*without nap

Facile

**ROBES POUR JEUNES FEMMES**

**Tissus Conseillés:** Chambray, Cottonnades, Crêpe de Chine, Lin mélangés, Popeline, Satin, Types soie.

**Mercerie:** A,B: 0.9m d'élastique de 1.3cm.

Tailles	8	10	12	14	16	18	20	22	24	26
Françaises	36	38	40	42	44	46	48	50	52	54
Européen	34	36	38	40	42	44	46	48	50	52

**MESURES DU CORPS:** Choisissez la taille du patron basée sur les mesures du corps

Poitrine	80	83	87	92	97	102	107	112	117	122	cm
Taille	61	64	67	71	76	81	87	94	99	106	"
Hanches (23cm au-dessous de la taille)	85	88	92	97	102	107	112	117	122	127	cm
Dos du cou à la taille	40	40.5	41.5	42	42.5	43	44	44	44.5	44.5	"

Robe A	115cm*	2.3	2.3	2.4	2.5	3.1	3.1	3.1	3.1	3.1	3.1	m
	150cm*	1.9	1.9	1.9	2.1	2.1	2.3	2.3	2.3	2.3	2.4	"
Robe B	115cm*	3.7	3.7	3.7	4.1	4.1	4.2	4.5	4.6	4.8	5.1	m
	150cm*	3.3	3.3	3.3	3.3	3.3	3.3	3.3	3.3	3.3	3.3	"

**MESURES DES VÊTEMENTS FINI (Motif et aisance de port compris)**

A,B Poitrine	119	122	126	131	136	141	146	151	156	161	cm
Largeur à l'ourlet											
Robe A	154	157	161	166	171	176	181	186	191	196	cm
Robe B	186	189	192	197	203	208	213	218	223	228	"
Longueur finie – dos, votre nuque à l'ourlet											
Robe A	86	86	87	88	88	89	90	90	91	91	cm
Robe B	131	132	133	133	134	135	135	136	137	137	"

\*avec sens \*\*sans sens



A



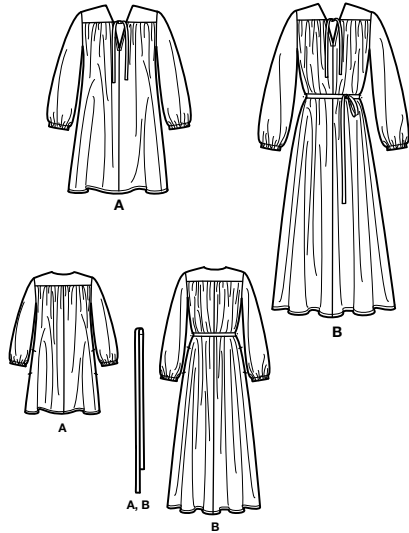
B



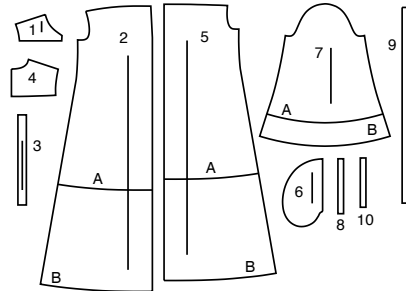
A,B

# Simplicity®

Thank you for purchasing this Simplicity pattern.  
We made every effort to provide you with a high quality product.



10 PIECES



- 1 Yoke Front-A,B
- 2 Front-A,B
- 3 Tie End-A,B
- 4 Yoke Back-A,B
- 5 Back-A,B
- 6 Pocket-A,B
- 7 Sleeve-A,B
- 8 Guide for Elastic-A
- 9 Tie Belt-B
- 10 Guide for Elastic-B



www.simplicity.com



info@simplicity.com



1-888-588-2700

## General Directions

### The Pattern

#### SYMBOLS

- GRAIN LINE Place on straight grain of fabric parallel to selvage
- PLACE SOLID LINE on fold of fabric.
- CENTER FRONT OR BACK of garment.
- NOTCHES
- DOTS
- CUTTING LINE
- LENGTHEN OR SHORTEN LINES

SEAM ALLOWANCE: 5/8" (1.5cm) unless otherwise stated is included but not printed on MULTI-SIZE PATTERNS. Mark your size with colored felt tip pen. See chart on tissue for how to use MULTI-SIZE PATTERNS.

#### ADJUST IF NEEDED

Make adjustments before placing pattern on fabric.

**TO LENGTHEN:**  
Cut pattern between lengthen or shorten lines. Spread pattern evenly, the amount needed and tape to paper.

**TO SHORTEN:**  
At lengthen or shorten lines, make an even pleat taking up amount needed. Tape in place.

When lengthen or shorten lines are not given, make adjustments at lower edge of pattern.

### Sewing

- SEW garment following **Sewing Directions**.
- PIN or machine-baste seams matching notches.
- STITCH 5/8" (1.5 cm) seams unless otherwise stated.
- PRESS seams open unless otherwise indicated clipping when necessary so seams will lie flat.
- TRIM seams to reduce bulk, as shown below.



Trim enclosed seams into layers



Trim corners



Clip inner curves



Notch outer curves

### Cutting/Marking

#### BEFORE CUTTING:

PRESS pattern pieces with a warm dry iron. PRE-SHRINK fabric by pre-washing washables or steam-pressing non-washables.

CIRCLE your cutting layout.

PIN pattern to fabric as shown in Cutting Layouts.

• FOR DOUBLE THICKNESS: Fold fabric with RIGHT sides together.

• FOR SINGLE THICKNESS: Place fabric RIGHT side up.

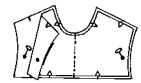
• FOR PILE, SHADED OR ONE WAY DESIGN FABRICS: Use "with nap" layouts

#### AFTER CUTTING:

Transfer markings to WRONG side of fabric before removing pattern. Use pin and chalk method or dressmaker's tracing paper and wheel.

#### To Quick Mark:

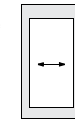
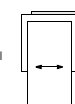
- Snip edge of fabric to mark notches, ends of fold lines and center lines.
- Pin mark dots.



### SPECIAL CUTTING NOTES

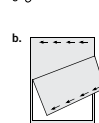
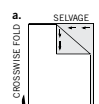
★ If layout shows a piece extending past fold, cut out all pieces except piece that extends.

Open out fabric to single thickness. Cut extending piece on RIGHT side of fabric in position shown.

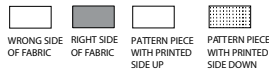


✱ Mark small arrows along both selvages indicating direction of nap or design. Fold fabric crosswise with RIGHT sides together, and cut along fold (a).

Turn one fabric layer around so arrows on both layers go in the same direction. Place RIGHT sides together (b).



## Cutting Layouts



POSITION OF PATTERN PIECES MAY VARY SLIGHTLY ACCORDING TO YOUR PATTERN SIZE

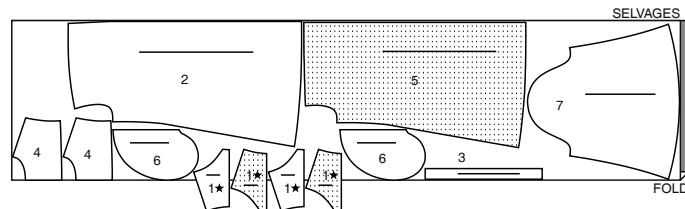
### DRESS A

USE PIECES 1 2 3 4 5 6 7

45" (115CM)

WITH NAP

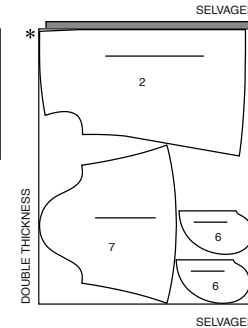
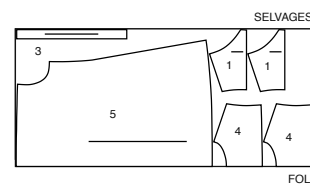
SIZES 8 10 12 14



45" (115CM)

WITH NAP

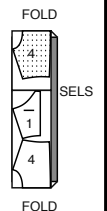
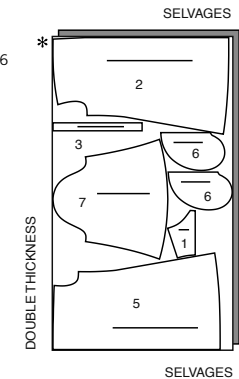
SIZES 16 18 20 22 24 26



60" (150CM)

WITH NAP

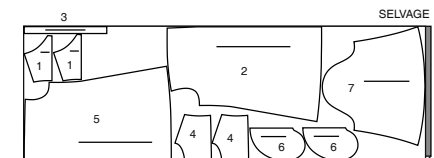
SIZES 8 10 12 14 16



60" (150CM)

WITH NAP

SIZES 18 20 22 24 26



FOLD

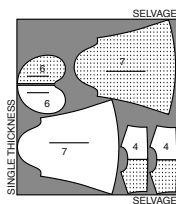
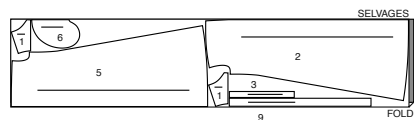
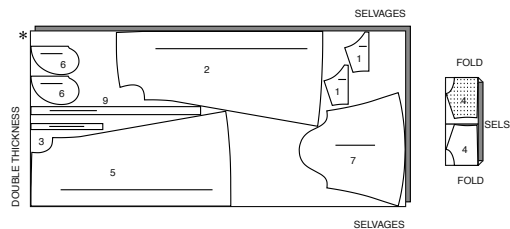
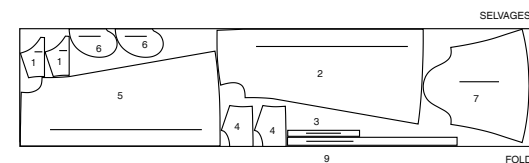
CUTTING LAYOUTS CONTINUED ON PAGE 2

**S3001**

2 of 4

**DRESS B**

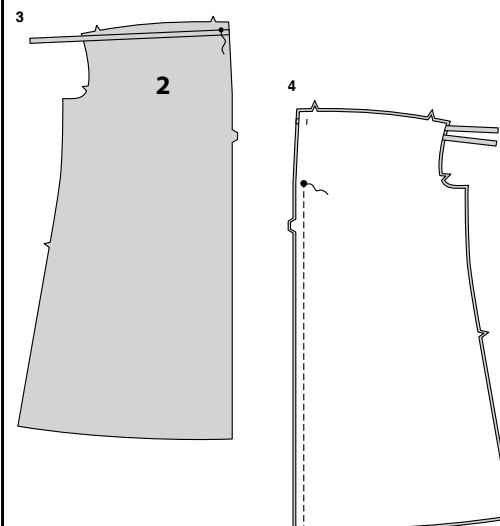
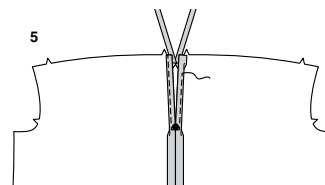
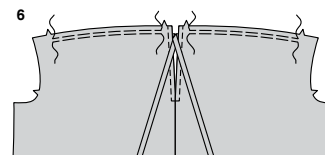
USE PIECES 1 2 3 4 5 6 7 9

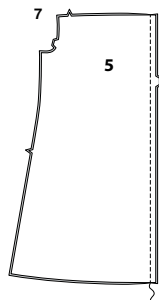
45" (115CM)  
WITH NAP  
SIZES 8 10 1245" (115CM)  
WITH NAP  
SIZES 14 16 18 20 22 24 2660" (150CM)  
WITH NAP  
ALL SIZES

## SEWING TUTORIALS

Build your skills viewing short, easy-to-follow videos at  
[simplicity.com/sewingtutorials](https://www.simplicity.com/sewingtutorials)**Sewing Directions**

**FABRIC KEY**

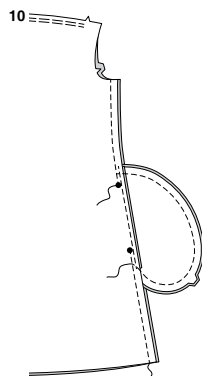
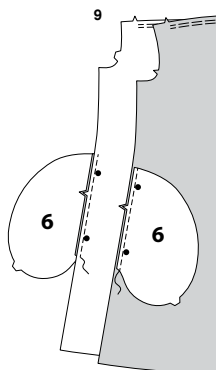
Read **General Directions** on page 1 before you begin.Sewing methods in **BOLD TYPE** have Sewing Tutorial Video available.  
Scan **QR CODE** to watch videos:**SLEEVE** – See **Armholes/Sleeves**: "sewing a set in sleeve" video.**EASE/GATHER** - See **Gathering**: "sewing two row gathers" video.**NARROW HEM** - See **Hems**: "sewing narrow hems" video.**UNDERSTITCH** - See **Machine Stitches**: "how to understitch" video.**SLIPSTITCH** - Slide needle through a folded edge, then pick up a thread of underneath fabric.**PATTERN PIECES WILL BE IDENTIFIED BY NUMBERS THE FIRST TIME THEY ARE USED.**  
**STITCH SEAMS WITH RIGHT SIDES TOGETHER UNLESS OTHERWISE STATED.****NOTE:** Under each sub-heading, the first view will be illustrated, unless otherwise illustrated.**DRESS A, B****FRONT AND BACK****1.** Fold TIE END (3) in half lengthwise, with **RIGHT** sides together. Stitch in 3/8"(1cm) seam, leaving end with dot open. Trim seam and corners.**2.** Turn tie end **RIGHT** side out; press. Baste raw edges.**3.** On outside, pin tie ends to front edges of **FRONT** (2), matching small dots; having raw edges even; stitch.**4.** With **RIGHT** sides together, pin front edges together, matching large dots. Stitch center seam, from lower edge to large dot. Back-stitch at large dot to reinforce seam.**5.** Press under 5/8"(1.5cm) on front opening edges. To form **NARROW HEM**, tuck under raw edge to meet crease; press. Stitch hem in place, squaring stitching below large dot, turning tie ends out.**6.** **GATHER** upper edges of front between notches.



- 7.** With RIGHT sides together, pin BACK (5) edges together. Stitch center seam.



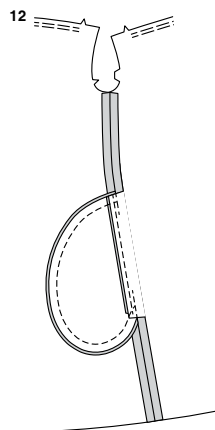
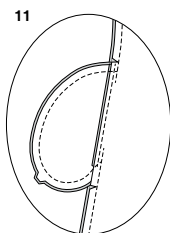
- 8.** GATHER upper edge of back between notches.



#### POCKETS AND SIDE SEAMS

- 9.** Stitch one POCKET (6) section to each front and back at each side edge in  $3/8"$  (1cm) seam. Press seams toward pockets.

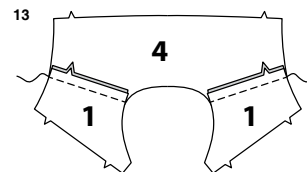
- 10.** With RIGHT sides together, pin front to back at side seam, matching large dots. Stitch, leaving free between large dots. Stitch pocket edges together to side seams.



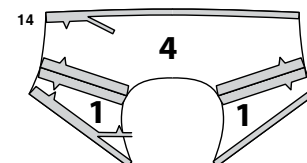
- 11.** Clip back side seam allowances above and below pockets.

- 12.** Turn pockets toward front along seamlines; press.

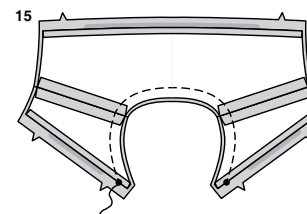
#### YOKE



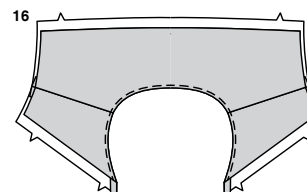
- 13.** Pin two YOKE FRONT (1) sections to one YOKE BACK (4) section at shoulders; stitch. (Remaining yoke sections will be used as facing.)



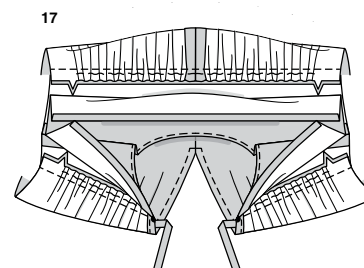
- 14.** Pin each yoke front FACING (1) to yoke back FACING (4) at shoulders; stitch. Press under  $5/8"$  (1.5cm) on lower edge of facing. Trim pressed edge to  $3/8"$  (1cm).



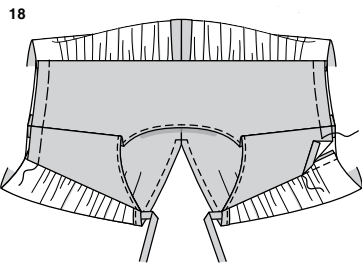
- 15.** With RIGHT sides together, pin yoke facing to yoke, matching center backs, dots and seams. Stitch neck edge; trim seam.



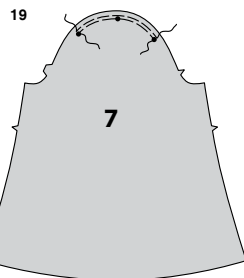
- 16.** UNDERSTITCH facing neck edge. Turn yoke facing to inside; press.



- 17.** With RIGHT sides together, pin yoke to front and back, matching front dots and center backs. Adjust gathers; baste. Stitch, keeping facing free. Trim seams; turn toward yoke.

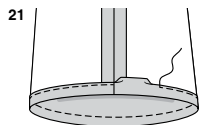
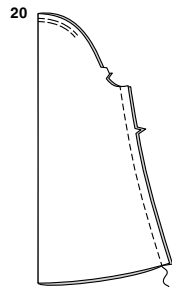


**18.SLIPSTITCH** pressed edges over seams. Baste armhole edges together.



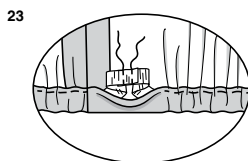
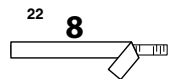
#### SLEEVE

**19.EASE** cap of SLEEVE (7) between outer dots.



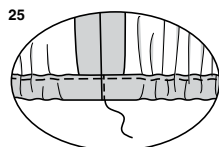
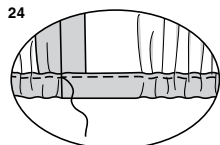
**20.Stitch** underarm seam.

**21.Press** 7/8" (2.2cm) on lower edge of sleeve to INSIDE, forming casing. Press under 1/4" (6mm) on raw edge. Stitch close to inner edge of casing, leaving an opening to insert elastic.



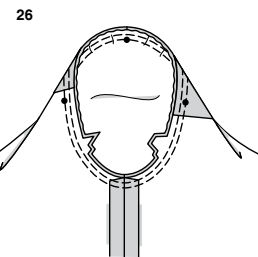
**22.Cut** two pieces of elastic, each using GUIDE FOR ELASTIC (8) or (10) pattern piece.

**23.Insert** elastic through casing. Overlap ends and hold with a safety pin. Try on sleeve and adjust to fit. Stitch ends of elastic together securely.

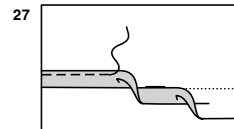


**24.Stitch** opening closed. Distribute fullness evenly.

**25.TIP-** To secure elastic so it won't twist in wearing, stitch through all thicknesses of casing in the groove of seam.

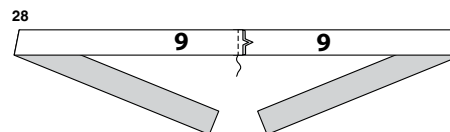


**26.** With RIGHT sides together, pin sleeve into armhole with center small dot at shoulder seam, matching underarm seams, notches and remaining small dots. Adjust ease; baste. Stitch. Stitch again 1/8" (3mm) away in seam allowance. Trim close to second stitching between notches. Turn seam allowances toward sleeve.



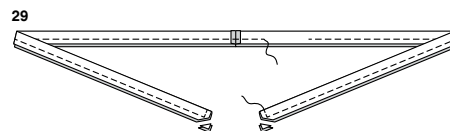
#### FINISHING HEM

**27.NARROW HEM-** Press up 5/8" (1.5cm) hem allowance on lower edge of dress. Tuck under raw edge to meet crease; press. Stitch hem in place.

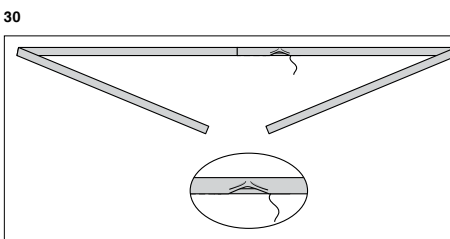


#### TIE BELT AND THREAD LOOPS

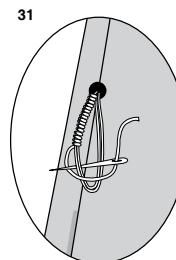
**28.Stitch** notched ends of TIE BELT (9) sections in 3/8" (1cm) seam.



**29.** Fold tie belt in half lengthwise, with RIGHT sides together. Stitch in 3/8" (1cm) seam, leaving an opening for turning. Trim seam and corners.



**30.** Turn tie belt RIGHT side out; press. **SLIPSTITCH** opening edges together.



**31.** Make a thread loop at each side seam at small dot 1-3/4" (4.5cm) long, as shown, large enough for tie belt to pass through.



# Congrats!

You've completed your sewing adventure

---

## SHARE YOUR LOOK



Post your pattern and tag us  
[@simplicity\\_creative\\_group](#) and [#simplicitypatterns](#)  
for a chance to be featured on our social media.

Look for more PDF patterns at [simplicity.com](https://www.simplicity.com)

Have a question or need help with your sewing project call us at  
1-888-588-2700



Simplicity ©2024 a division of IG Design Group Americas Inc. • Atlanta, GA 30342 USA [www.thedesigngroup.com](https://www.thedesigngroup.com) • All Rights Reserved. [www.simplicity.com](https://www.simplicity.com) • Made in the U.S.A. Fabriqué aux États-Unis.

To be used for individual private home use only and not for commercial or manufacturing purposes. • A usage privé seulement et non à des fins commerciales ou de production en série. • Para uso privado solamente, no se puede utilizar con propósitos de comercialización o de producción en serie.