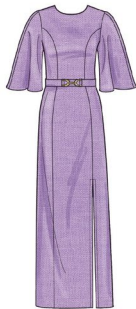


S3000

**Simplicity**



B



C



A

Designed and printed in USA.

Average

**MISSSES' AND WOMEN'S DRESS IN THREE LENGTHS (WITH B,C,D CUP SIZES FOR MISSSES' AND C,D,DD CUP SIZES FOR WOMEN'S)**

**Suggested Fabrics:** Challis, Crepe, Lightweight Denim, Linen Types, Poplin, Sateen, Silky Types.  
**Interfacing:** Lightweight Fusible.

**Notions:** A,B,C: One invisible zipper: 22" (56cm) for Misses, 24" (61cm) for Women, one slide buckle with a 1½" (4cm) opening, one ¾" (1cm) sew-on snap.

| Sizes    | 10 | 12 | 14 | 16 | 18 | 20W | 22W | 24W | 26W | 28W |
|----------|----|----|----|----|----|-----|-----|-----|-----|-----|
| European | 36 | 38 | 40 | 42 | 44 | 46  | 48  | 50  | 52  | 54  |

**BODY MEASUREMENTS: Select pattern size based on body measurements**

|                           |     |     |     |     |    |     |     |     |     |     |      |
|---------------------------|-----|-----|-----|-----|----|-----|-----|-----|-----|-----|------|
| <b>Bust</b>               | 32½ | 34  | 36  | 38  | 40 | 42  | 44  | 46  | 48  | 50  | Ins. |
| <b>Waist</b>              | 25  | 26½ | 28  | 30  | 32 | 35  | 37  | 39  | 41½ | 44  | "    |
| <b>Hip-9" below waist</b> | 34½ | 36  | 38  | 40  | 42 | 44  | 46  | 48  | 50  | 52  | "    |
| <b>Back-neck to waist</b> | 16  | 16½ | 16½ | 16½ | 17 | 17½ | 17½ | 17½ | 17½ | 17½ | "    |

**Interfacing A,B,C** 20" - 1¾ yds. for sizes 10 12 14 16 18; 1¾ yds. for sizes 20W 22W 24W 26W 28W

|                |      |    |    |    |    |    |    |    |    |    |    |      |
|----------------|------|----|----|----|----|----|----|----|----|----|----|------|
| <b>Dress A</b> | 45"* | 3  | 3½ | 3½ | 3½ | 3½ | 3½ | 3½ | 3½ | 3½ | 3½ | Yds. |
|                | 60"* | 2¼ | 2¼ | 2½ | 2½ | 2½ | 2½ | 2¾ | 2¾ | 2¾ | 3  | "    |
| <b>Dress B</b> | 45"* | 3¼ | 3½ | 3½ | 3½ | 3½ | 3½ | 3¾ | 3¾ | 3¾ | 3¾ | Yds. |
|                | 60"* | 2½ | 2½ | 2¾ | 2¾ | 2¾ | 3  | 3  | 3½ | 3½ | 3½ | "    |
| <b>Dress C</b> | 45"* | 3½ | 3½ | 3½ | 3½ | 4½ | 4½ | 4½ | 4½ | 4½ | 4½ | Yds. |
|                | 60*  | 2½ | 2½ | 2½ | 3  | 3½ | 3½ | 3½ | 3½ | 3½ | 3½ | "    |

**FINISHED GARMENT MEASUREMENTS (Includes Design and Wearing Ease)**

|                                               |     |     |     |     |     |     |     |     |     |     |      |
|-----------------------------------------------|-----|-----|-----|-----|-----|-----|-----|-----|-----|-----|------|
| <b>B Bust Cup</b>                             | 36  | 37½ | 39½ | 41½ | 43½ | -   | -   | -   | -   | -   | Ins. |
| <b>C Bust Cup</b>                             | 37  | 38½ | 40½ | 42½ | 44½ | 45½ | 47½ | 49½ | 51½ | 53½ | "    |
| <b>D Bust Cup</b>                             | 38  | 39½ | 41½ | 43½ | 45½ | 46½ | 48½ | 50½ | 52½ | 54½ | "    |
| <b>DD Bust Cup</b>                            | -   | -   | -   | -   | -   | 47½ | 49½ | 51½ | 53½ | 55½ | "    |
| <b>A,B,C Waist</b>                            | 27  | 28½ | 30½ | 32½ | 34½ | 37  | 39  | 41  | 43  | 45  | "    |
| <b>A,B,C Hip</b>                              | 37½ | 39  | 41  | 43  | 45  | 47½ | 49½ | 51½ | 53½ | 55½ | "    |
| <b>Width, lower edge</b>                      |     |     |     |     |     |     |     |     |     |     |      |
| <b>Dress A,B,C</b>                            | 37½ | 39  | 41  | 43  | 45  | 47½ | 49½ | 51½ | 53½ | 55½ | Ins. |
| <b>Finished back length from base of neck</b> |     |     |     |     |     |     |     |     |     |     |      |
| <b>Dress A</b>                                | 34  | 34½ | 34½ | 34½ | 35  | 35¾ | 36  | 36¾ | 36¾ | 36¾ | Ins. |
| <b>Dress B</b>                                | 39  | 39¾ | 39¾ | 39¾ | 40  | 41¼ | 41½ | 41¾ | 42  | 42¼ | "    |
| <b>Dress C</b>                                | 57  | 57½ | 57½ | 57¾ | 58  | 59¼ | 59½ | 59¾ | 60  | 60¼ | "    |

\*with nap \*\*without nap

Moins Facile

**ROBE EN TROIS LONGUEURS POUR JEUNES FEMMES ET FEMMES (AVEC TAILLES DE BONNET B,C,D POUR JEUNES FEMMES ET TAILLES DE BONNET C,D,DD POUR FEMMES)**

**Tissus Conseillés:** Challis, Crêpe, Denim Léger, Types toile de lin, Popeline, Satinette, Types soie.  
**Entoilage:** Thermocollant léger.

**Mercerie:** A,B,C: 1 fermeture à glissière invisible: 56cm pour jeunes femmes, 61cm pour femmes, 1 boucle coulissante avec une ouverture de 4cm, 1 bouton-pression à coudre.

| Tailles    | 10 | 12 | 14 | 16 | 18 | 20W | 22W | 24W | 26W | 28W |
|------------|----|----|----|----|----|-----|-----|-----|-----|-----|
| Françaises | 38 | 40 | 42 | 44 | 46 | 48  | 50  | 52  | 54  | 56  |
| Européen   | 36 | 38 | 40 | 42 | 44 | 46  | 48  | 50  | 52  | 54  |

**MESURES DU CORPS: Choisissez la taille du patron basée sur les mesures du corps**

|                                               |      |      |    |      |     |     |     |      |     |     |    |
|-----------------------------------------------|------|------|----|------|-----|-----|-----|------|-----|-----|----|
| <b>Poitrine</b>                               | 83   | 87   | 92 | 97   | 102 | 107 | 112 | 117  | 122 | 127 | cm |
| <b>Taille</b>                                 | 64   | 67   | 71 | 76   | 81  | 89  | 94  | 99   | 105 | 112 | "  |
| <b>Hanches (23cm au-dessous de la taille)</b> | 88   | 92   | 97 | 102  | 107 | 112 | 117 | 122  | 127 | 132 | cm |
| <b>Dos du cou à la taille</b>                 | 40.5 | 41.5 | 42 | 42.5 | 43  | 44  | 44  | 44.5 | 45  | 45  | "  |

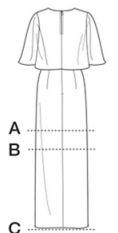
**Entoilage A,B,C** 51cm - 1.3m for sizes 10 12 14 16 18; 1.5m for sizes 20W 22W 24W 26W 28W

|               |        |     |     |     |     |     |     |     |     |     |     |   |
|---------------|--------|-----|-----|-----|-----|-----|-----|-----|-----|-----|-----|---|
| <b>Robe A</b> | 115cm* | 2.7 | 2.9 | 2.9 | 3.0 | 3.0 | 3.1 | 3.1 | 3.2 | 3.2 | 3.2 | m |
|               | 150cm  | 2.1 | 2.1 | 2.3 | 2.3 | 2.3 | 2.4 | 2.5 | 2.5 | 2.6 | 2.7 | " |
| <b>Robe B</b> | 115cm* | 3.0 | 3.0 | 3.1 | 3.2 | 3.2 | 3.3 | 3.4 | 3.4 | 3.4 | 3.5 | m |
|               | 150cm* | 2.3 | 2.4 | 2.5 | 2.6 | 2.6 | 2.7 | 2.7 | 2.7 | 2.9 | 3.1 | " |
| <b>Robe C</b> | 115cm* | 3.2 | 3.3 | 3.3 | 3.3 | 3.7 | 4.1 | 4.2 | 4.2 | 4.2 | 4.3 | m |
|               | 150cm* | 2.6 | 2.6 | 2.6 | 2.7 | 2.9 | 3.1 | 3.2 | 3.3 | 3.3 | 3.3 | " |

**MESURES DES VÊTEMENTS FINI (Motif et aisance de port compris)**

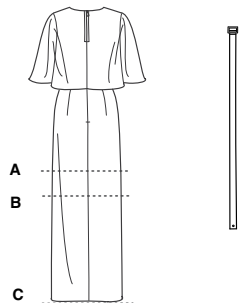
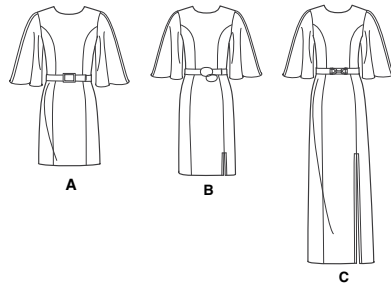
|                                                     |     |     |     |     |     |     |     |     |     |     |    |
|-----------------------------------------------------|-----|-----|-----|-----|-----|-----|-----|-----|-----|-----|----|
| <b>B Poitrine-Bonnet</b>                            | 91  | 95  | 100 | 105 | 110 | -   | -   | -   | -   | -   | cm |
| <b>C Poitrine-Bonnet</b>                            | 94  | 98  | 103 | 108 | 113 | 116 | 121 | 126 | 131 | 136 | "  |
| <b>D Poitrine-Bonnet</b>                            | 97  | 100 | 105 | 110 | 116 | 118 | 123 | 128 | 133 | 138 | "  |
| <b>DD Poitrine-Bonnet</b>                           | -   | -   | -   | -   | -   | 121 | 126 | 131 | 136 | 141 | "  |
| <b>A,B,C Taille</b>                                 | 69  | 72  | 77  | 83  | 88  | 94  | 99  | 104 | 109 | 114 | "  |
| <b>A,B,C Hanches</b>                                | 95  | 99  | 104 | 109 | 114 | 121 | 126 | 131 | 136 | 141 | "  |
| <b>Largeur à l'ourlet</b>                           |     |     |     |     |     |     |     |     |     |     |    |
| <b>Robe A,B,C</b>                                   | 95  | 99  | 104 | 109 | 114 | 121 | 126 | 131 | 136 | 141 | cm |
| <b>Longueur finie - dos, votre nuque à l'ourlet</b> |     |     |     |     |     |     |     |     |     |     |    |
| <b>Robe A</b>                                       | 86  | 87  | 88  | 88  | 89  | 91  | 91  | 92  | 93  | 93  | cm |
| <b>Robe B</b>                                       | 99  | 100 | 100 | 101 | 102 | 105 | 105 | 106 | 107 | 107 | "  |
| <b>Robe C</b>                                       | 145 | 145 | 146 | 147 | 147 | 150 | 151 | 152 | 152 | 153 | "  |

\*avec sens \*\*sans sens

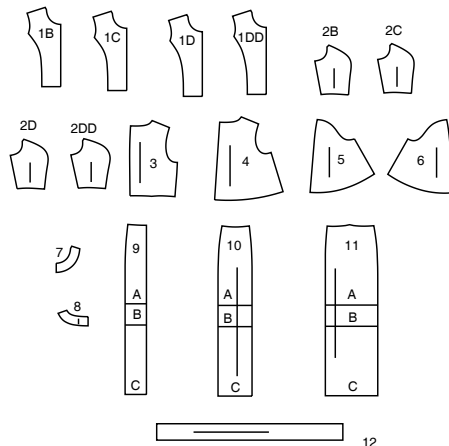


# Simplicity

Thank you for purchasing this Simplicity pattern.  
We made every effort to provide you with a high quality product.



12 PIECES



- 1B BODICE FRONT - A,B,C - B CUP
- 1C BODICE FRONT - A,B,C - C CUP
- 1D BODICE FRONT - A,B,C - D CUP
- 1DD BODICE FRONT - A,B,C - DD CUP
- 2B BODICE FRONT - A,B,C - B CUP
- 2C BODICE SIDE FRONT - A,B,C - C CUP
- 2D BODICE SIDE FRONT - A,B,C - D CUP
- 2DD BODICE SIDE FRONT - A,B,C - DD CUP
- 3 BODICE BACK - A,B,C
- 4 CAPE - A,B,C
- 5 SLEEVE FRONT - A,B,C
- 6 SLEEVE BACK - A,B,C
- 7 FRONT FACING - A,B,C
- 8 BACK FACING - A,B,C
- 9 SKIRT FRONT - A,B,C
- 10 SKIRT SIDE FRONT - A,B,C
- 11 SKIRT BACK - A,B,C
- 12 BELT - A,B,C

## General Directions

### The Pattern

- SYMBOLS**
- GRAIN LINE Place on straight grain of fabric parallel to selvage
  - PLACE SOLID LINE on fold of fabric.
  - CENTER FRONT OR BACK of garment.
  - NOTCHES
  - DOTS
  - CUTTING LINE
  - LENGTHEN OR SHORTEN LINES

SEAM ALLOWANCE: 5/8" (1.5cm) unless otherwise stated is included but not printed on MULTI-SIZE PATTERNS. Mark your size with colored felt tip pen. See chart on tissue for how to use MULTI-SIZE PATTERNS.

### ADJUST IF NEEDED

Make adjustments before placing pattern on fabric.

**TO LENGTHEN:**  
Cut pattern between lengthen or shorten lines. Spread pattern evenly, the amount needed and tape to paper.

**TO SHORTEN:**  
At lengthen or shorten lines, make an even pleat taking up amount needed. Tape in place.

When lengthen or shorten lines are not given, make adjustments at lower edge of pattern.

### Cutting/Marking

**BEFORE CUTTING:**  
PRESS pattern pieces with a warm dry iron. PRE-SHRINK fabric by pre-washing washables or steam-pressing non-washables.

CIRCLE your cutting layout.

PIN pattern to fabric as shown in Cutting Layouts.

FOR DOUBLE THICKNESS: Fold fabric with RIGHT sides together.

FOR SINGLE THICKNESS: Place fabric RIGHT side up.

FOR PILE, SHADED OR ONE WAY DESIGN FABRICS: Use "with nap" layouts

**AFTER CUTTING:**  
Transfer markings to WRONG side of fabric before removing pattern. Use pin and chalk method or dressmaker's tracing paper and wheel.

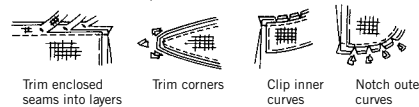
### To Quick Mark:

- Snip edge of fabric to mark notches, ends of fold lines and center lines.
- Pin mark dots.



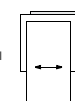
### Sewing

- SEW garment following Sewing Directions.
- PIN or machine-baste seams matching notches.
- STITCH 5/8" (1.5 cm) seams unless otherwise stated.
- PRESS seams open unless otherwise indicated clipping when necessary so seams will lie flat.
- TRIM seams to reduce bulk, as shown below.

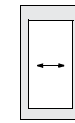


### SPECIAL CUTTING NOTES

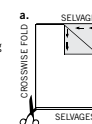
If layout shows a piece extending past fold, cut out all pieces except piece that extends.



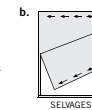
Open out fabric to single thickness. Cut extending piece on RIGHT side of fabric in position shown.



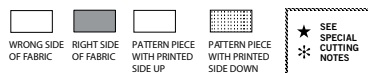
Mark small arrows along both selvages indicating direction of nap or design. Fold fabric crosswise with RIGHT sides together, and cut along fold (a).



Turn one fabric layer around so arrows on both layers go in the same direction. Place RIGHT sides together (b).



## Cutting Layouts

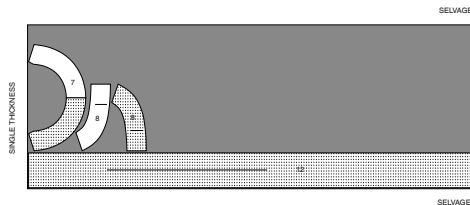


POSITION OF PATTERN PIECES MAY VARY SLIGHTLY ACCORDING TO YOUR PATTERN SIZE

### INTERFACING A,B,C

USE PIECES 7 8 12

20" (51CM)  
ALL SIZES

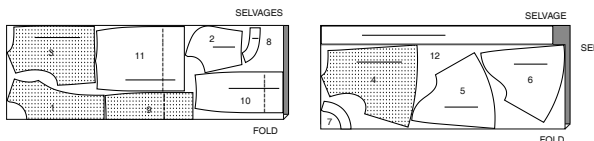


**NOTE:** DASHED LINE SHOWN ON PATTERN PIECES IN CUTTING LAYOUTS INDICATES CUTTING LINE FOR SHORTER LENGTH.

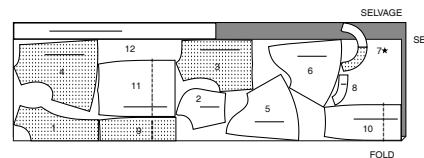
### DRESS A,B

MISSES': USE PIECES 1 (B,C,D) 2 (B,C,D) 3 4 5 6 7 8 9 10 11 12  
WOMEN'S: USE PIECES 1 (C,D,DD) 2 (C,D,DD) 3 4 5 6 7 8 9 10 11 12

45" (115CM)  
WITH NAP  
ALL SIZES



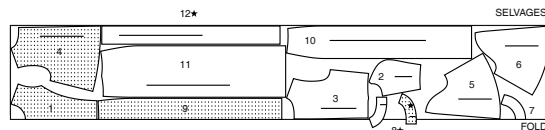
60" (150CM)  
WITH NAP  
ALL SIZES



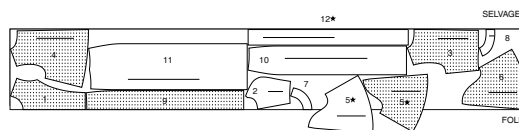
### DRESS C

MISSES': USE PIECES 1 (B,C,D) 2 (B,C,D) 3 4 5 6 7 8 9 10 11 12  
WOMEN'S: USE PIECES 1 (C,D,DD) 2 (C,D,DD) 3 4 5 6 7 8 9 10 11 12  
CUT ONE OF PIECE 12

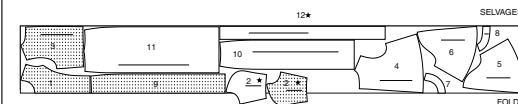
45" (115CM)  
WITH NAP  
SIZES 10 12 14 16



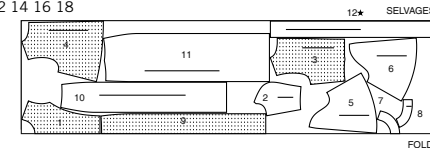
45" (115CM)  
WITH NAP  
SIZE 18



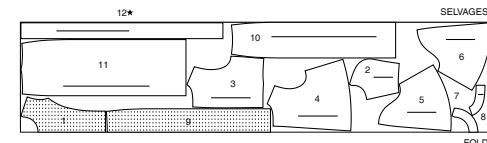
45" (115CM)  
WITH NAP  
SIZES 20W 22W 24W 26W 28W



60" (150CM)  
WITH NAP  
SIZES 10 12 14 16 18



60" (150CM)  
WITH NAP  
SIZES 20W 22W 24W 26W 28W

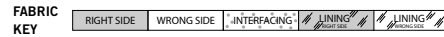


## SEWING TUTORIALS



Build your skills viewing short, easy-to-follow videos at [simplicity.com/sewingtutorials](http://simplicity.com/sewingtutorials)

## Sewing Directions



Read **General Directions** on page 1 before you begin.

Sewing methods in **BOLD TYPE** have Sewing Tutorial Video available. Scan QR CODE to watch videos:

**DART**- See **sewing flat dart** video.

**DESIGNER/BABY HEM**- See **sewing a baby hem** video.

**EASE/GATHER** - See **sewing two row gathers** video.

**NARROW HEM** - See **sewing narrow hems** video.

**REINFORCE** - See **how to reinforce** video.

**STAYSTITCH** - See **how to do stay-stitching** video.

**UNDERSTITCH** - See **how to understitch** video.

**FINISH** - Stitch 1/4" (6mm) from raw edge and finish with one of the following: (1) Pink OR (2) Overcast OR (3) Turn in along stitching and stitch close to fold OR (4) Overlock.

**OPTIONAL FOR HEMS:** Apply Seam Binding.

**SLIPSTITCH** - Slide needle through a folded edge, then pick up a thread of underneath fabric.

## DRESS A, B

**NOTE:** View A, misses' size will be illustrated, unless otherwise indicated.

## INTERFACING

1. Pin INTERFACING to wrong side of each matching FABRIC section. Fuse, following manufacturer's instructions.

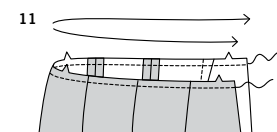
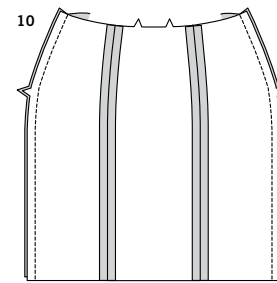
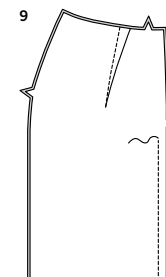
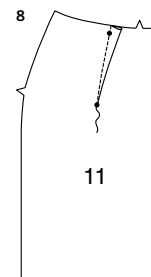
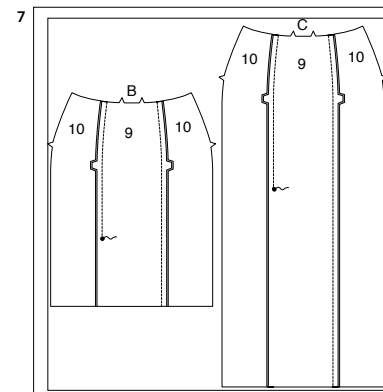
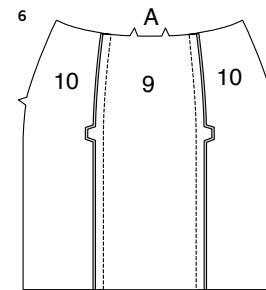
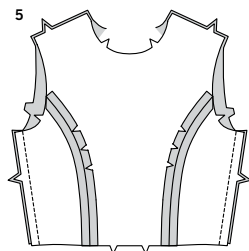
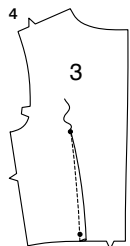
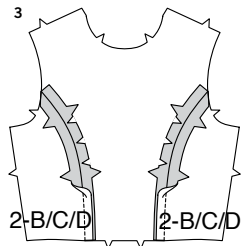
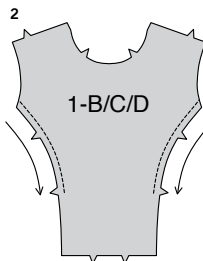
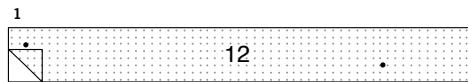
## BODICE

2. **STAYSTITCH** side edge of BODICE FRONT (1B, 1C or 1D) for Misses sizes, (1C, 1D or 1DD) for Women sizes, above lower notch in direction of arrows, as shown.

3. With RIGHT sides together, pin bodice side front (2B, 2C or 2D Misses) (2C, 2D or 2DD Women's) to side edges of bodice front, clipping bodice front where necessary. Baste. Stitch.

4. Stitch **DART** in BODICE BACK (3). Press seam toward center.

5. Stitch bodice front to bodice backs at sides.



## SKIRT AND ZIPPER

## FOR VIEW A-

6. With RIGHT sides together, pin SKIRT SIDE FRONT (10) sections to SKIRT FRONT (9) at side front edges, matching notches. Stitch.

## FOR VIEWS B, C-

7. With RIGHT sides together, pin skirt side front sections to skirt front at side front edges, matching notches. Stitch, leaving left side open below large dot.

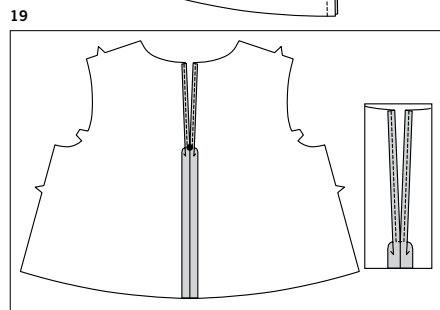
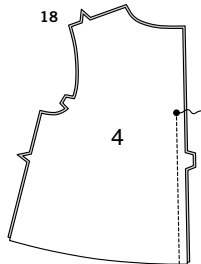
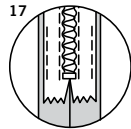
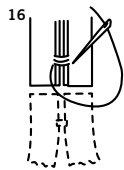
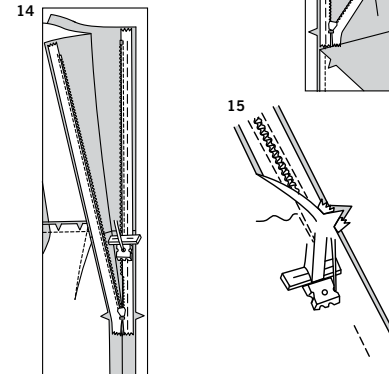
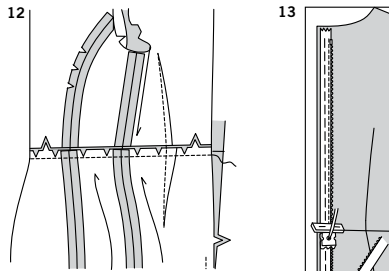
## CONTINUE AS FOLLOWS FOR ALL VIEWS

8. Stitch **DART** in SKIRT BACK (11). Press dart toward center.

9. Stitch skirt back sections together at center back seam, leaving open from 1" (2.5cm) below notch to upper edge.

10. Stitch skirt front to skirt back at sides.

11. **STAYSTITCH** upper edge of skirt in direction of arrows.



- 12.** With **RIGHT** sides together, pin skirt to bodice, matching centers and seams, clipping to stay-stitching where necessary. Baste. Stitch. Press seam toward bodice.

**NOTE:** *Stitch the invisible zipper using an invisible zipper foot. If the zipper is longer than the zipper opening, adjust after the zipper is inserted. For a How to video, see ZIPPER: "sewing an invisible zipper".*

- 13.** Open the zipper and press the tape using a cool iron. On **OUTSIDE**, pin **RIGHT** side of the zipper face down on the **RIGHT** side of the zipper opening. Have the coil along the seam line, the tape within the seam allowance and the top stop 3/4" (2cm) below upper edge, as shown. Hand-baste along center of the tape. Position zipper foot at the top of the zipper with **RIGHT** groove of the foot over coil. Stitch along tape to the notch. Back-stitch to reinforce.

- 14.** Pin the remaining half of the zipper to the **LEFT** side of the zipper opening in same manner. Hand-baste along the center of the tape. Position zipper foot at the top of the zipper with **LEFT** groove over the coil. Stitch along tape to the notch. Back-stitch to reinforce.

- 15.** Close zipper and check that it is invisible from the **OUTSIDE**. Pull the free ends of the zipper tape away from the seam allowance. Pin remaining back seam together below zipper. Position zipper foot all the way to the **LEFT** so the needle goes down through the outer notch of the foot. Start stitching seam 1/4" (6mm) above lowest stitch and slightly to the **LEFT**. Stitch remainder of seam, connecting with previous stitching.

- 16.** If the zipper is longer than the opening, using a strong thread, hand-sew a few small stitches across ends of coils at end of opening. Trim away lower end of zipper tape to within 5/8" (1.5cm) of hand-stitches.

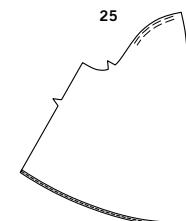
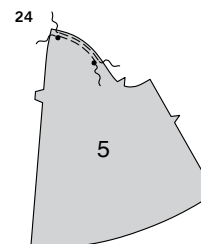
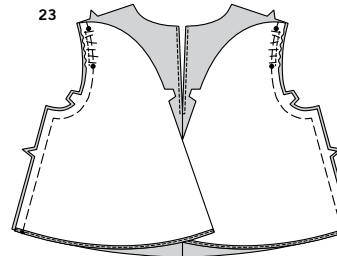
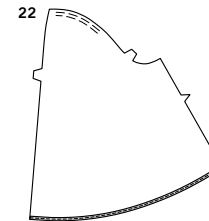
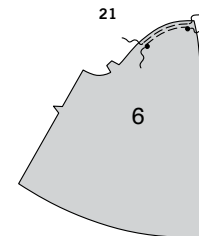
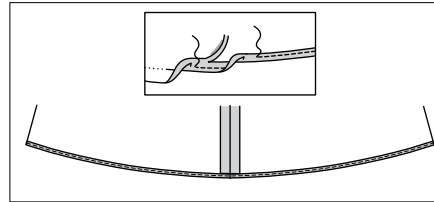
- 17.** If you prefer, open out each seam allowance at ends of zipper and stitch tape to seam allowance.

### CAPE AND FINISHING

- 18.** Stitch **CAPE** (4) sections together at center back seam, leaving open above large dot.

- 19.** Make **NARROW HEM** at back opening edges, tapering to nothing below large dot, squaring stitching at opening.

20



- 20.** To make a **DESIGNER'S HEM** on lower edge of cape, press up 1/4" (6mm). Stitch close to pressed edge. Trim close to stitching. Press under 1/8" (3mm) and stitch in place.

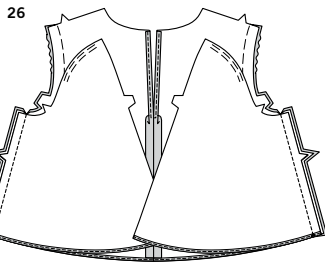
- 21.** **EASE** upper edge of **SLEEVE BACK** (6) between small dots.

- 22.** Make a **DESIGNER'S HEM** on lower edge of sleeve back.

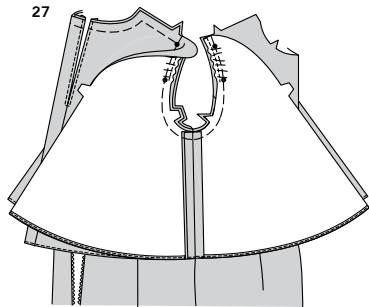
- 23.** With **RIGHT** sides together, pin sleeve back to cape at armhole and side edges, placing upper small dot at shoulder seamline, matching remaining small dots and notches. Pull up ease stitches to fit; baste.

- 24.** **EASE** upper edge of **SLEEVE FRONT** (5) between small dots.

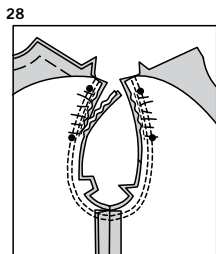
- 25.** Make a **DESIGNER'S HEM** on lower edge of sleeve front.



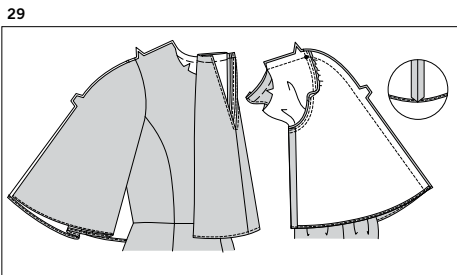
**26.** Pin RIGHT side of sleeve front to WRONG side of cape at underarm and side edges, matching notches. Stitch.



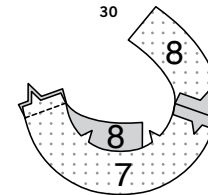
**27.** With RIGHT sides together, pin sleeve front to bodice at armhole edge, placing upper small dot at shoulder seamline, matching remaining small dots and notches. Pull up ease stitches to fit; baste. Pin WRONG side of cape to RIGHT side of bodice back, matching centers, small dots and notches. Baste shoulder edge to small dot, as shown, keeping sleeve back free.



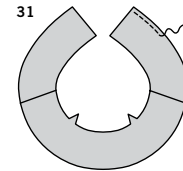
**28.** Stitch entire armhole edge. Stitch again 1/4" (6mm) away in seam allowance. Trim close to second stitching. Press seam toward sleeve.



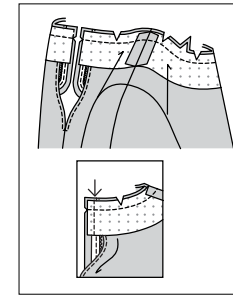
**29.** With WRONG sides together, place shoulder and overarm edges together with bodice facing up. Roll up left side of garment and bring right side of garment over left and pin shoulder and overarm edges, with RIGHT sides together, matching small dots and notches, stitch. Turn. Stitch left side of garment in same manner. Diagonally trim seam allowances at lower edge of sleeve, as shown.



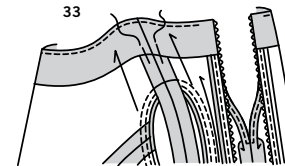
**30.** Stitch FRONT FACING (7) to BACK FACING (8) at shoulder edges.



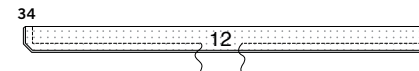
**31.** FINISH lower edge of facing.



**32.** Open out back opening edges of dress, rolling the zipper teeth away from the opening edges. Pin facing to neck edge of dress matching centers, notches and shoulder seams. Stitch neck edge. Trim. Pin back opening edges together. Using an adjustable zipper foot, stitch 1/2" (1.3cm) from back edges, keeping zipper teeth free. Trim corners. Do not trim center back edges. UNDERSTITCH neck edge of facing as far as possible.



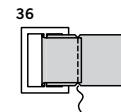
**33.** Turn facing and back edges to INSIDE, rolling zipper teeth back in place; press. Tack facing to shoulder seam allowances.



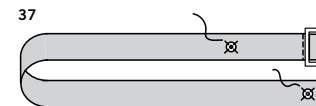
**34.** With RIGHT sides together, fold BELT (12) in half lengthwise. Stitch outer edges, leaving an opening for turning. Trim seam. Clip corners.



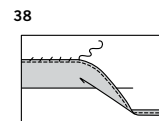
**35.** Turn RIGHT side out. Press. SLIPSTITCH opening.



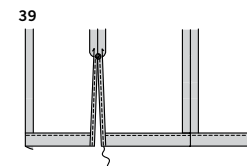
**36.** Slip end of belt through bar of buckle, turning in belt along foldline. Stitch close to edge, through all thicknesses.



**37.** On INSIDE, sew ball section of snap fasteners to belt at small dot, as shown. On OUTSIDE, sew socket section of snap fasteners to belt at small dot, as shown.



**38.** Press up 1 1/4" (3.2cm) hem. FINISH the raw edge. SLIPSTITCH hem in place.



FOR VIEWS B, C-

**39.** Make NARROW HEM at skirt front opening edges, tapering to nothing above large dot, squaring stitching at opening.



# Congrats!

You've completed your sewing adventure

---

**SHARE  
YOUR** LOOK



Post your pattern and tag us  
[@simplicity\\_creative\\_group](#) and [#simplicitypatterns](#)  
for a chance to be featured on our social media.

Look for more PDF patterns at [simplicity.com](https://www.simplicity.com)

Have a question or need help with your sewing project call us at  
1-888-588-2700



Simplicity ©2024 a division of IG Design Group Americas Inc. • Atlanta, GA 30342 USA [www.thedesigngroup.com](http://www.thedesigngroup.com) • All Rights Reserved. [www.simplicity.com](http://www.simplicity.com) • Made in the U.S.A. Fabriqué aux États-Unis.

To be used for individual private home use only and not for commercial or manufacturing purposes. • A usage privé seulement et non à des fins commerciales ou de production en série. • Para uso privado solamente, no se puede utilizar con propósitos de comercialización o de producción en serie.