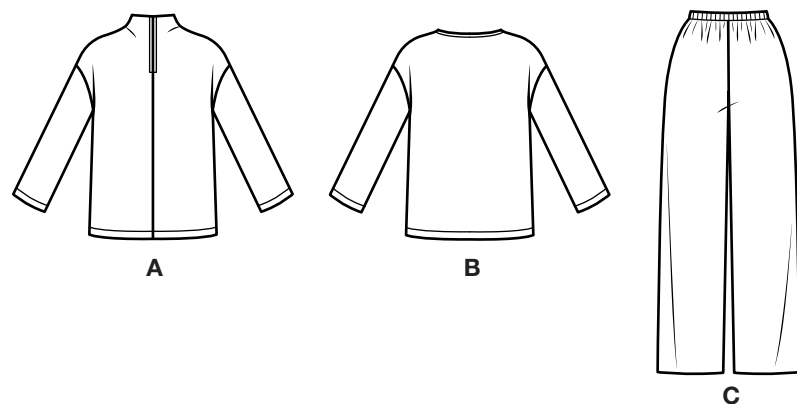
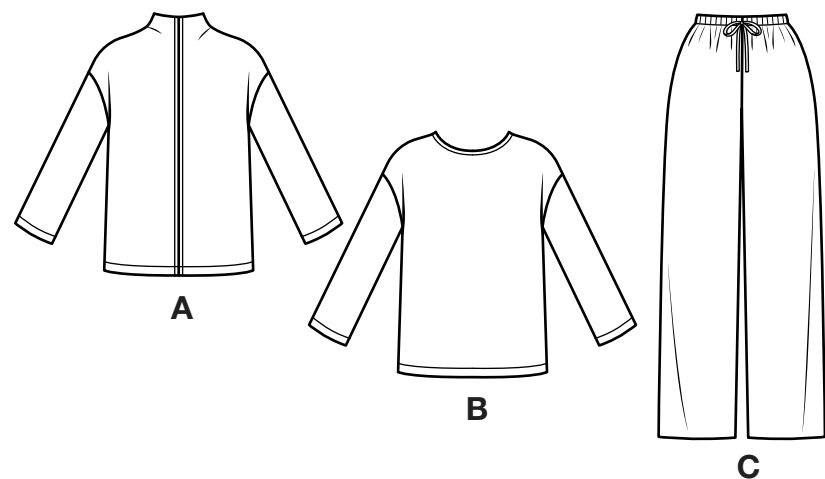


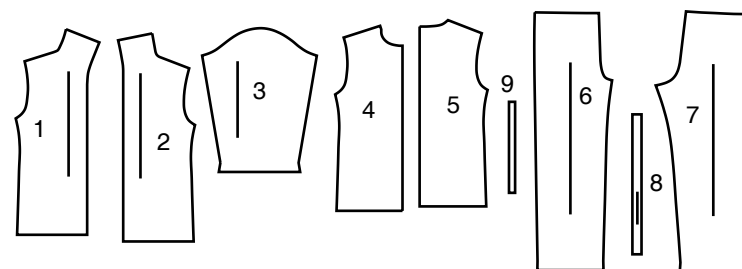
NEW LOOK® N6814

www.simplicity.com info@simplicity.com 1-888-588-2700

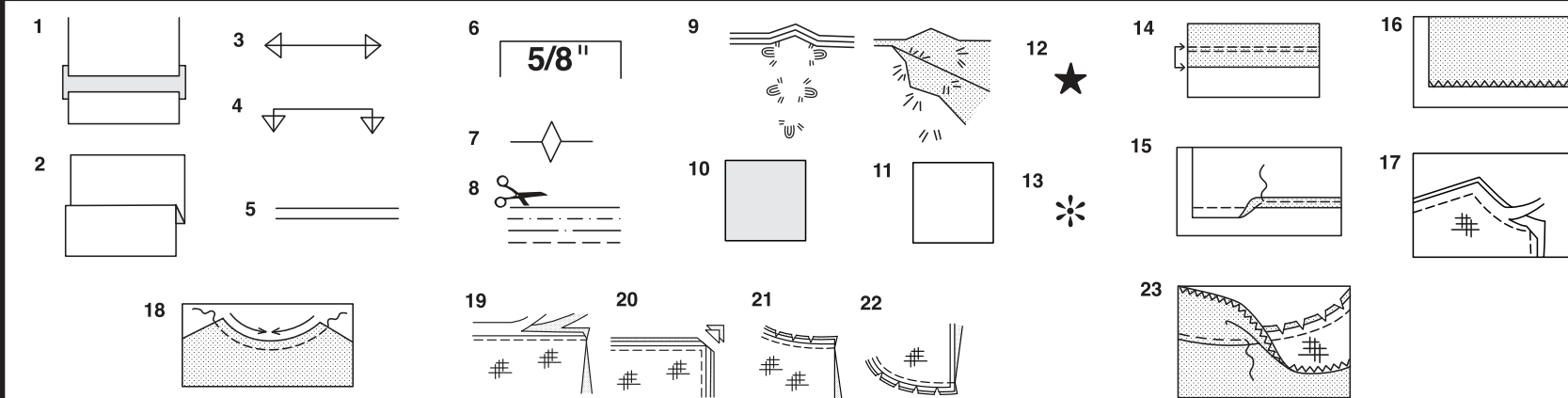
Thank you for purchasing this New Look pattern. We made every effort to provide you with a high quality product. Gracias por haber comprado este patrón de New Look. Hemos hecho todos los esfuerzos para ofrecerle un producto de alta calidad.



9 PIECES



- 1 Front-A
- 2 Back-A
- 3 Sleeve-A,B
- 4 Front-B
- 5 Back-B
- 6 Pants Front-C
- 7 Pants Back-C
- 8 Tie End-C
- 9 Elastic Guide-C



How To Use Your Multi Size Pattern

First Prepare Your Pattern

Select the pattern pieces according to the view you are making.

This pattern is made to body measurements with ease allowed for comfort and style. If your body measurements differ from those on the pattern envelope adjust the pieces before placing them on the fabric.

Check your back neck to waist and dress length, if necessary, alter the pattern. Lengthening and shortening lines are indicated.

1. **TO LENGTHEN** : Cut pattern between printed lines and place paper underneath. Spread pattern the required amount and pin to paper.
2. **TO SHORTEN** : Fold at the printed lines to form a pleat half the amount to be shortened, ie 1/2" (1.3cm) deep to shorten 1" (2.5cm).

Study Your Pattern Markings

3. **STRAIGHT GRAIN** : Place an even distance from selvage or a straight thread.
4. **FOLD** : Place on fold of fabric.
5. **LENGTHENING AND SHORTENING LINES.**
6. **SEAM ALLOWANCE** : 5/8" (1.5cm) unless otherwise stated.
7. **NOTCHES** : Match notches.
8. **CUTTING LINES** : Multi patterns have different cutting lines for different sizes.
9. **TAILOR-TACKS** : With double thread make two loose stitches forming loop through fabric layers and pattern leaving long ends. Cut loop to remove pattern. Snip thread between fabric layers. Leave tufts.

Cutting Layouts

Cutting Directions

FOR FOLDED AND DOUBLE LAYER FABRIC - Place fabric with right side inside and pin pattern on wrong side of fabric.

FOR SINGLE LAYER - Pin pattern on right side of fabric. NOTE: Pattern pieces may interlock more closely for smaller sizes. Cut notches out from cutting line.

BEFORE removing pattern from fabric, transfer all pattern markings using tailor tacks or dressmaking tracing paper.

10. **KEY:** pattern printed side down
11. **KEY:** pattern printed side up
12. **KEY:** Cut out all pieces except pieces that extend beyond folded fabric, then open out fabric and on RIGHT side of fabric, cut in positions as shown.
13. **KEY:** For with and without nap layouts ensure fabric is placed with nap or design running in same direction.

Before pinning to fabric, press tissue pattern with a warm dry iron to remove creases.

Sewing Directions

Fabric Key	Right Side	Wrong Side	Interfacing	Lining

Sew garment following **Sewing Directions.**

PIN or machine-baste seams matching notches.

STITCH 5/8" (1.5cm) seams unless otherwise stated.

PRESS seams open unless otherwise indicated, clipping when necessary so seams will lie flat.

14. **EASE-STITCH** or **GATHER** - Loosen needle tension slightly. With RIGHT side up, stitch 5/8" (1.5cm) from cut edge using a long stitch. Stitch again 1/4" (6mm) away in the seam allowance.

EDGE FINISH - Neaten raw edges of seams, hems and facings using one of the following methods.

15. Stitch 1/4" (6mm) from edge, turn under along stitching and stitch.
16. Zig-zag or overlock raw edges.

17. **INTERFACING** — Pin interfacing to WRONG side of fabric. Cut across corners that will be enclosed with seams. Machine-baste 1/2" (1.3cm) from cut edge. (Shown only on first illustration). Trim interfacing close to machine-basting. For FUSIBLE interfacing, follow manufacturer's directions.

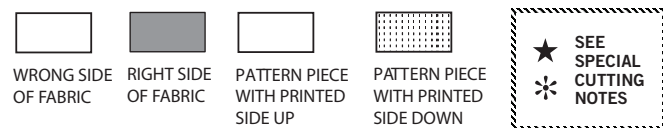
18. **STAY-STITCH** —Stitch 1/2" (1.3cm) from cut edge, in direction of arrows: (Shown only in the first illustration).

LAYERING — Trim seam allowance in layers.

19. Layer enclosed seams
20. Trim corners
21. Clip inner curves
22. Notch outer curves

23. **UNDERSTITCH** —Press facing away from garment; press seam toward facing. Facing side up, understitch close to seam through facing and seam allowances.

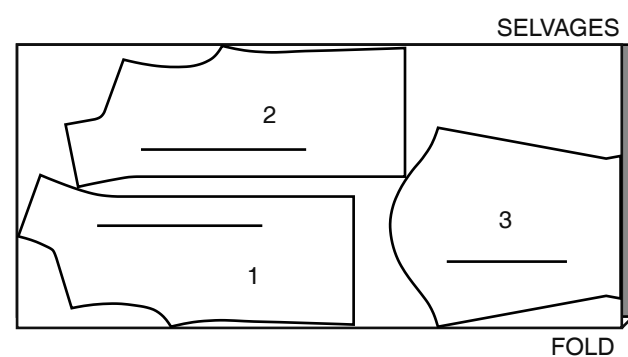
Cutting Layouts



TOP A

USE PIECES 1 2 3

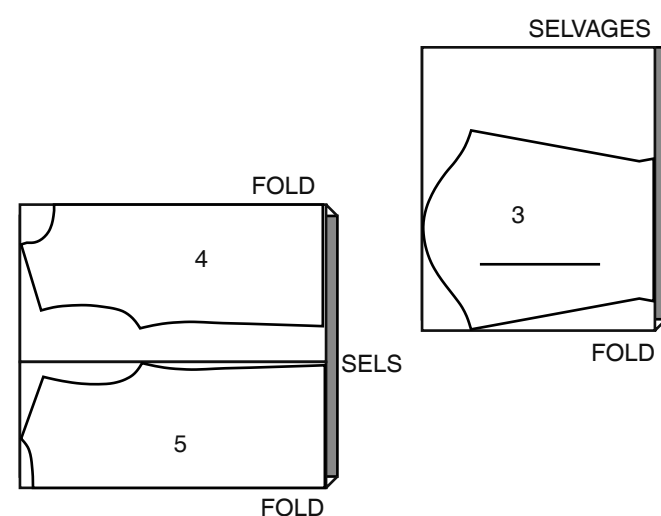
60" (150CM)
WITH NAP
ALL SIZES



TOP B

USE PIECES 3 4 5

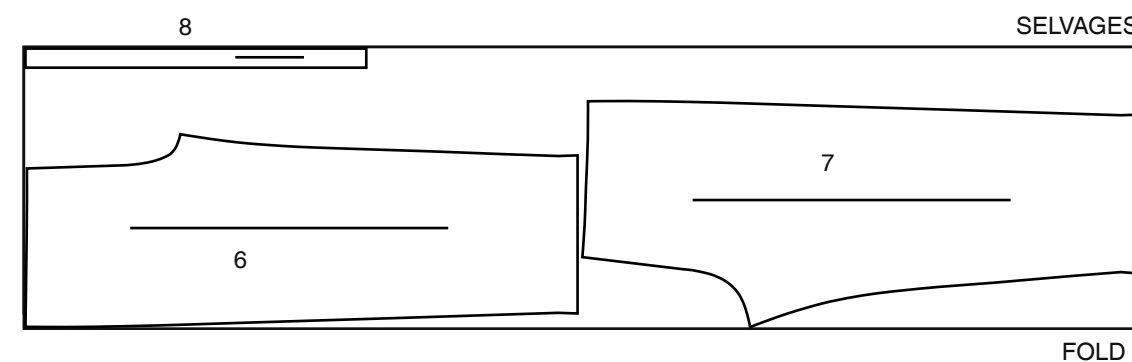
60" (150CM)
WITH NAP
ALL SIZES



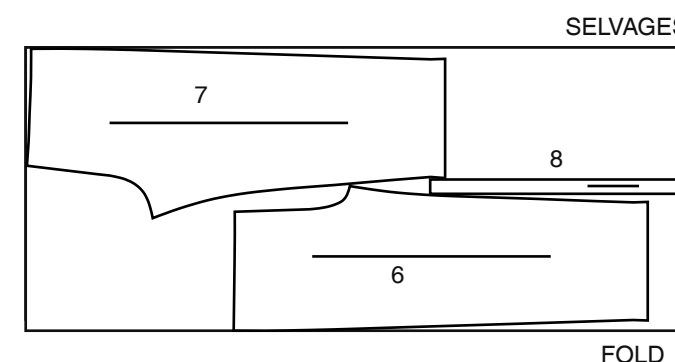
PANTS C

USE PIECES 6 7 8

45" (115CM)
WITH NAP
ALL SIZES



60" (150CM)
WITH NAP
ALL SIZES



Español

BLUSA A

USE LAS PIEZAS 1 2 3

60" (150CM)
CON PELUSA
TODAS LAS TALLAS

BLUSA B

USE LAS PIEZAS 3 4 5

60" (150CM)
CON PELUSA
TODAS LAS TALLAS

PANTALONES C

USE LAS PIEZAS 6 7 8

45" (115CM)
CON PELUSA
TODAS LAS TALLAS

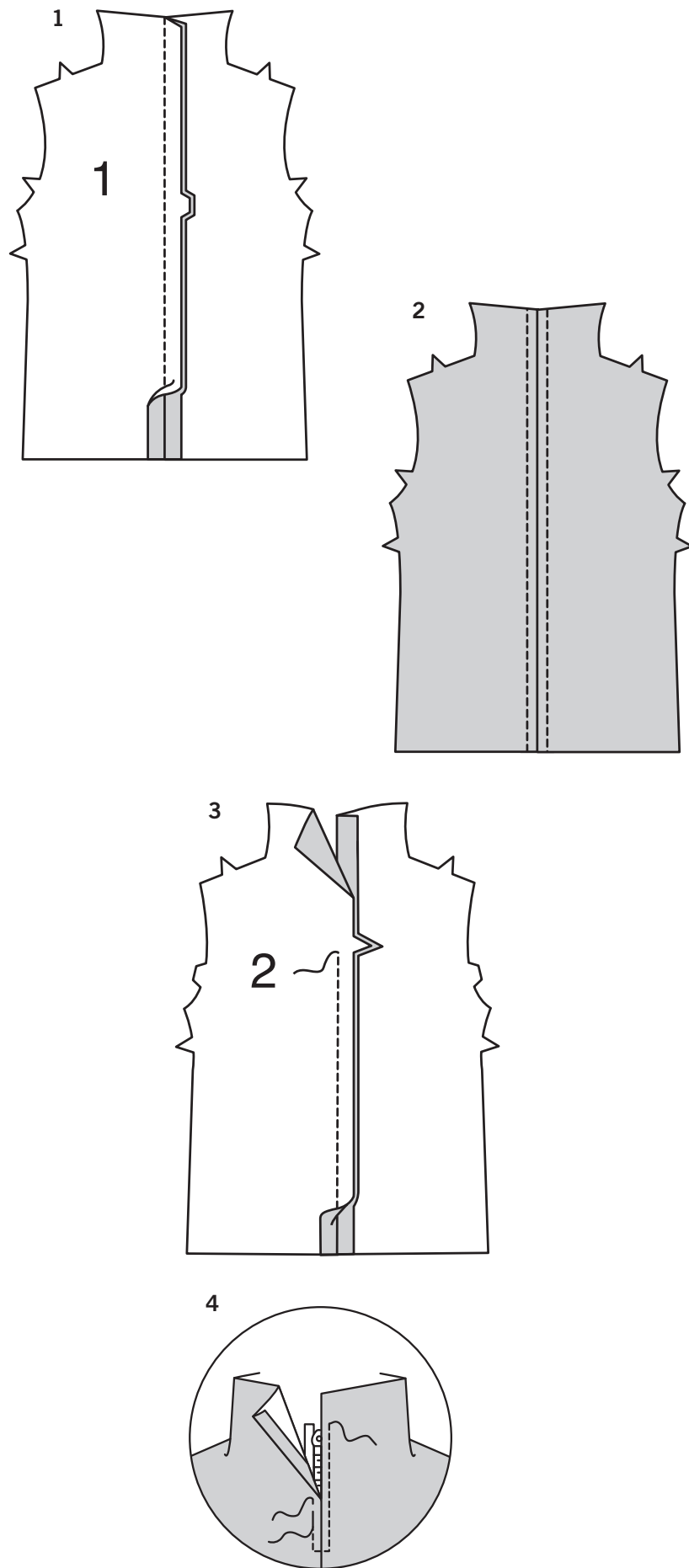
60" (150CM)
CON PELUSA
TODAS LAS TALLAS

SELVAGES= ORILLAS
SELS.= ORILLAS
FOLD= DOBLEZ

SEWING TUTORIALS



Build your skills viewing short, easy-to-follow videos at simplicity.com/sewingtutorials



SEWING DIRECTIONS

Sewing methods in **BOLD TYPE** have Sewing Tutorial Video available. Scan QR CODE to watch videos:

FINISH – See Seams: “how to finish seam allowances” video.

SLIPSTITCH - See how to slipstitch video.

TOPSTITCH - See how to topstitch video.

TOP A, B

NOTE: Stretch fabric evenly in front and back of needle while stitching.

NOTE: Under each sub-heading, the first View will be illustrated, unless otherwise indicated

FRONT AND BACK

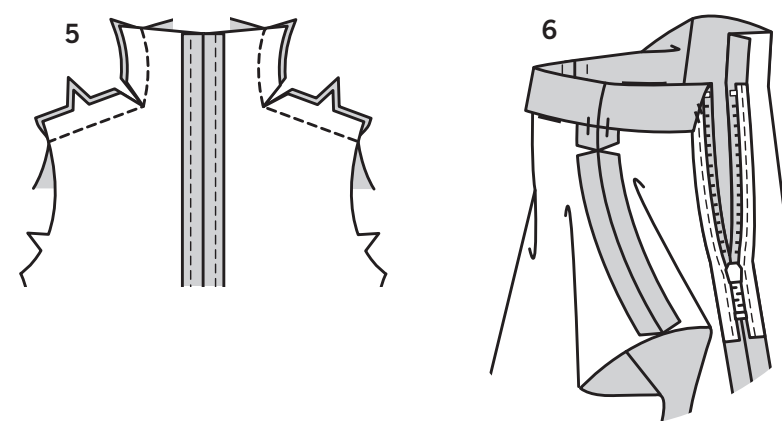
VIEW A:

1. Stitch FRONT (1) sections together at center front.

2. **TOPSTITCH** center front seams.

3. Stitch BACK (2) sections together at center back, leaving open above notch.

4. Turn in seam allowance on back opening edges. Press. With **RIGHT** sides up, pin closed zipper to back opening, placing zipper stop at notch, having pressed edges meet at center of zipper. Baste a scant 1/4”(6mm) from zipper teeth and across lower edge. Stitch along basting through all thicknesses, as shown, using a zipper foot. Remove basting.



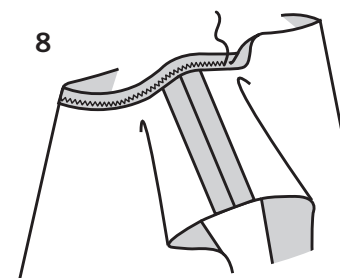
5. Stitch front to back at shoulders. Clip curves, as shown.

6. Turn neck edge to **INSIDE** along fold line forming facing. **SLIPSTITCH** facing to zipper tape. Tack at seams.

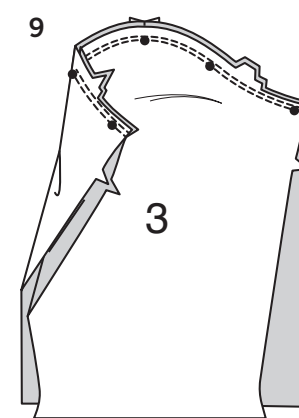


VIEW B:

7. Stitch **FRONT** (4) to **BACK** (5) at shoulders.

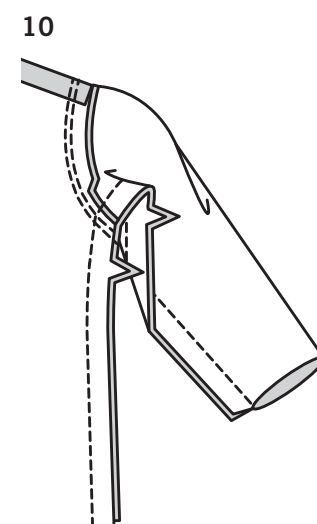


8. Turn in seam allowances on neck edge. Press. Zig-zag or stitch in place.

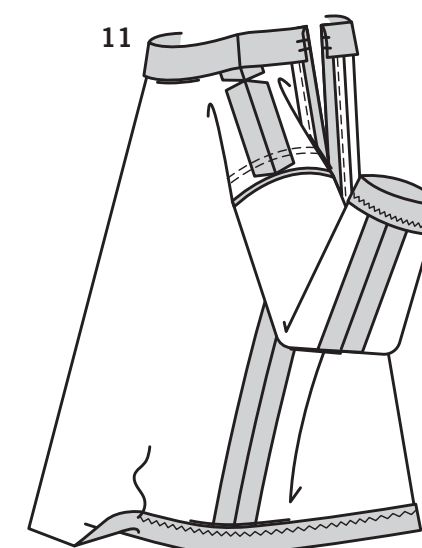


VIEWS A, B:

9. With **RIGHT** sides together, pin sleeve to armhole edge with center small dot at shoulder seam, matching remaining small dots. Stitch. Stitch again 1/4”(6mm) from first stitching. Trim seam below notches, close to second stitching. Press seam toward sleeve.



10. Pin front and back together at sides; pin sleeve edges together. Stitch in one continuous seam.



11. Turn up hem at lower edges of sleeve and hem. Zig-zag or stitch 1/4”(6mm) from raw edge.

PANTS C

NOTE: Stretch fabric evenly in front and back of needle while stitching.

FRONT AND BACK

1. Stitch PANTS FRONT (6) to PANTS BACK (7) at inner leg edge.

2. Stitch crotch seam. Stitch again 1/4"(6mm) away along curve. Trim seam between notches, close to second stitching.

3. Stitch front to back at sides.

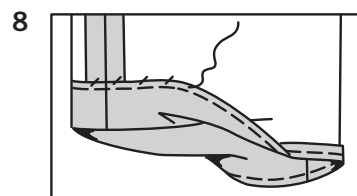
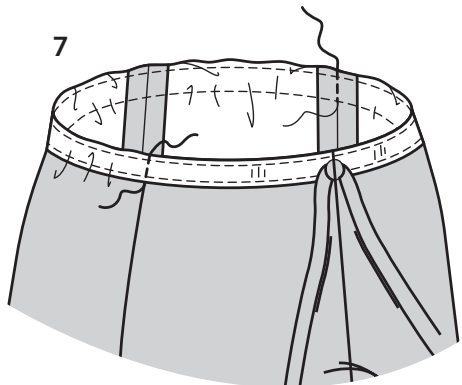
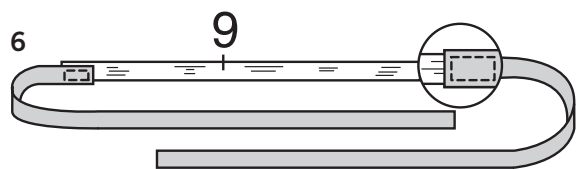
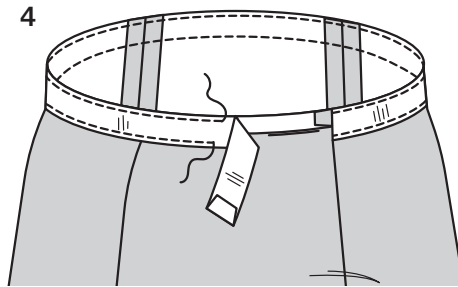
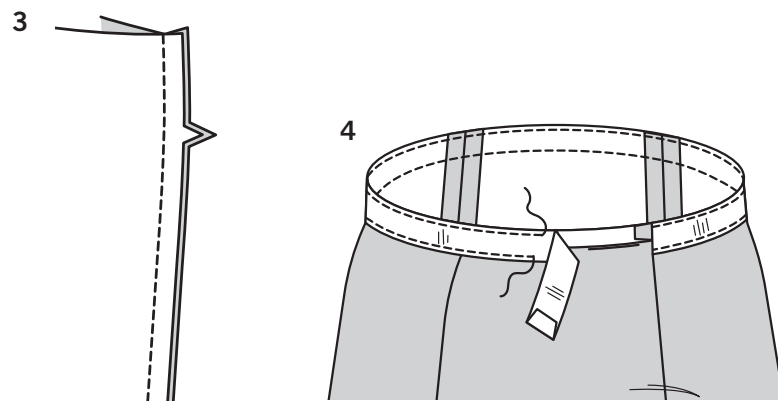
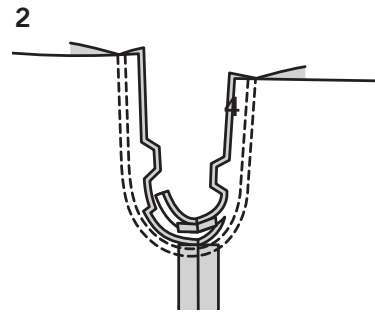
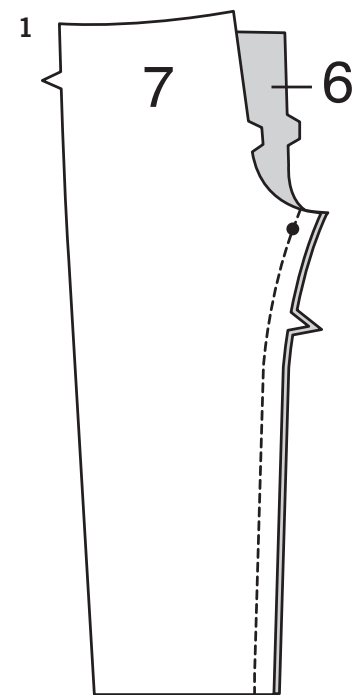
4. To form casing, turn seam allowance to OUTSIDE on upper edge of pants. Press. On OUTSIDE, pin ribbon to upper edge of garment, turning under ends, having ends meet at center front seam. Stitch close to both long edges of ribbon.

5. With RIGHT sides together, fold TIE END (8) in half lengthwise. Stitch in 3/8"(1cm) seam, leaving one end open.

6. Turn tie end RIGHT side out; press. Cut a piece of elastic the length of ELASTIC GUIDE (9). Pin elastic to raw ends of ties, overlapping ends 5/8"(1.5cm). Stitch securely in place.

7. Insert tie and elastic into casing through center front opening, having lapped ends 5/8"(1.5cm) beyond side seams. Stitch casing along side seams, as shown.

8. Turn up 1 1/2"(3.8cm) hem on lower edge of pants. Press. **FINISH** raw edge. Sew in place.



BLUSA A, B

NOTA: Estire uniformemente la tela en el frente y en la parte trasera de la aguja mientras este cosiendo.

NOTA: Debajo de cada subtítulo, el Primer Modelo será ilustrado, a menos que adelante se indique lo contrario.

FRENTE Y ESPALDA

MODELO A:

1. Cosa conjuntamente la sección FRONTAL (1), por el frente central.

2. **HAGA PUNTADA DE ADORNO** a las costuras frontales del centro.

3. Cosa conjuntamente la sección de la ESPALDA (2) por la parte trasera central, dejando abierto por encima de la muesca.

4. Voltee el margen de la costura sobre los bordes abiertos traseros. Planche. Con los DERECHOS hacia arriba, sujete con alfileres la cremallera cerrada hasta la abertura trasera, colocando el tope de la cremallera en la muesca, uniendo los bordes doblados en el centro de la cremallera. Hilvane a escasos 1/4"(6mm) de los dientes de la cremallera y a través del borde inferior. Cosa el hilvanado a través de todos los grosores, tal como se indica y utilizando un pie para cremallera. Retire el hilvanado.

5. Cosa el frente a la parte trasera en los hombros. Haga cortes a lo largo de las curvas, como se muestra.

6. Voltee el borde del escote al INTERIOR y a lo largo de la línea del doblé formando la vista. **HAGA PUNTADA FALSA** a la vista hasta la cinta de la cremallera. Cosa en las costuras.

MODELO B:

7. Cosa el FRENTE (4) a la ESPALDA (5), por las costuras de los hombros

8. Voltee los márgenes de la costura sobre el borde del escote. Planche. Haga puntada de zig-zag o cosa en su lugar.

MODELOS A, B:

9. DERECHO CON DERECHO, sujete con alfileres la manga al borde de la sisa con el punto pequeño central en la costura de los hombros, casando los puntos pequeños restantes. Cosa. Cosa de nuevo a 1/4"(6mm) de la puntada previa. Recorte la costura por debajo de las muescas, cerca de la puntada anterior. Planche la costura hacia la manga.

10. Sujete con alfileres juntos el frente a la espalda en los lados; sujete con alfileres conjuntamente los bordes de la manga. Cosa en una costura continua.

11. Voltee el dobladillo hacia arriba en los bordes inferiores de la manga y dobladille. Haga puntada de zig-zag o cosa a 1/4"(6mm) del borde no terminado.

PANTALONES C

NOTA: Estire uniformemente la tela en el frente y en la parte trasera de la aguja mientras la está cosiendo.

FRENTE Y PARTE TRASERA DEL PANTALON

1. Cosa el FRENTE (6) a la PARTE TRASERA DE LOS PANTALONES (7), por el borde interior de la manga.

2. Cosa la costura de la entrepierna. Cosa de nuevo a 1/4"(6mm) de distancia a lo largo de la curva. Recorte la costura entre las muescas, cerca de la puntada siguiente.

3. Cosa el frente a la parte trasera por los lados.

4. Para formar la jareta, voltee el margen de la costura al EXTERIOR, sobre el borde superior de los pantalones. Planche. En el EXTERIOR, sujete con alfileres la cinta al borde superior de la prenda, volteando un doblé en los extremos, teniendo unidos los extremos en la costura frontal central. Cosa cerca de ambos bordes largos de la cinta.

5. DERECHO CON DERECHO, doble el EXTREMO DEL LAZO (8) por la mitad y a lo largo. Cosa en una costura de 3/8"(1cm), dejando un extremo abierto para voltear.

6. Voltee el extremo del lazo por el DERECHO; planche. Corte un pedazo de elástico de la longitud de la GUÍA DEL ELÁSTICO (9). Sujete con alfileres el elástico a los bordes no terminados del lazo, cruzando los extremos a 5/8"(1.5cm). Cosa de manera segura en su lugar.

7. Inserte el lazo y el elástico en la jareta, a través de la abertura frontal central, teniendo cruzando los extremos a 5/8"(1.5cm), más allá de las costuras laterales. Cosa la jareta a lo largo de las costuras laterales, tal como se muestra.

8. Voltee un dobladillo de 1-1/2"(3.8cm), sobre el borde inferior de los pantalones. Planche. **TERMINE** el borde no terminado. Cosa en su lugar.