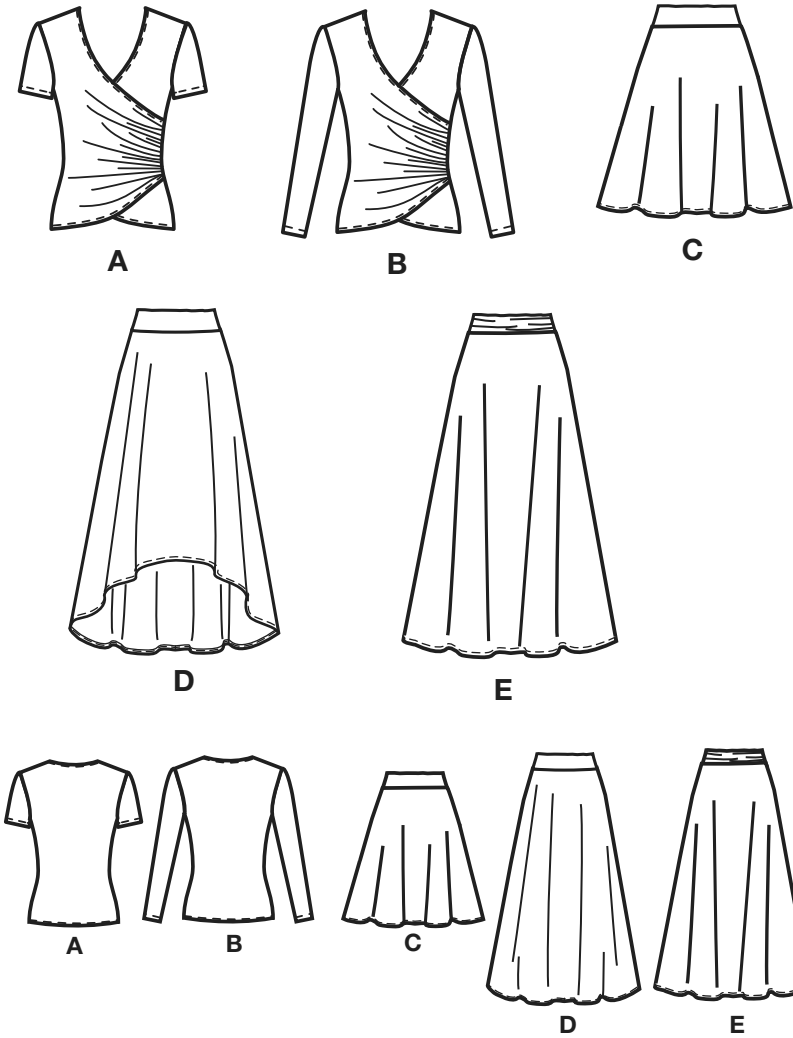


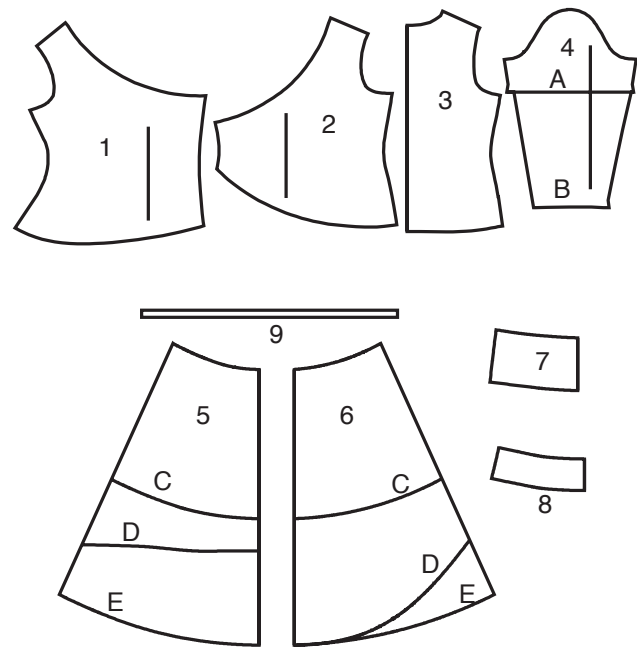
# NEWLOOK® N6804

www.simplicity.com info@simplicity.com 1-888-588-2700

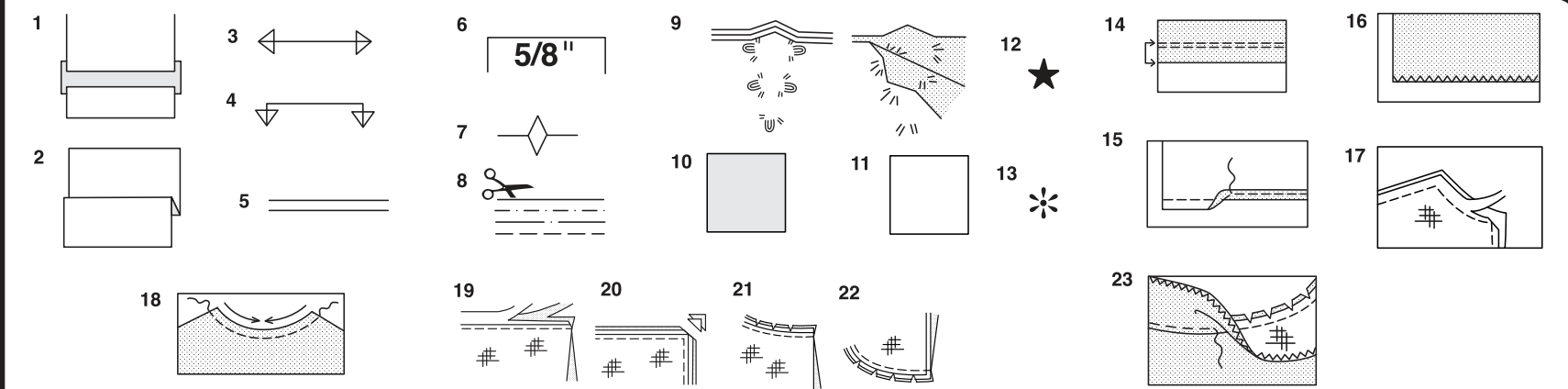
Thank you for purchasing this New Look pattern. We made every effort to provide you with a high quality product. Gracias por haber comprado este patrón de New Look. Hemos hecho todos los esfuerzos para ofrecerle un producto de alta calidad.



9 PIECES



- |                               |                                       |
|-------------------------------|---------------------------------------|
| 1 RIGHT FRONT A, B            | 1 FRENTE DERECHO A, B                 |
| 2 LEFT FRONT A, B             | 2 FRENTE IZQUIERDO A, B               |
| 3 BACK A, B                   | 3 ESPALDA A, B                        |
| 4 SLEEVE A, B                 | 4 MANGA A, B                          |
| 5 FRONT C, D, E               | 5 FRENTE C, D, E                      |
| 6 BACK C, D, E                | 6 PARTE TRASERA C, D, E               |
| 7 YOKE FRONT AND BACK C, D, E | 7 FRENTE Y ESPALDA DEL CANESU C, D, E |
| 8 YOKE FRONT AND BACK C, D, E | 8 FRENTE Y ESPALDA DEL CANESU C, D, E |
| 9 GUIDE FOR ELASTIC C, D, E   | 9 GUIA PARA ELASTICO C, D, E          |



### How To Use Your Multi Size Pattern

#### First Prepare Your Pattern

Select the pattern pieces according to the view you are making.

This pattern is made to body measurements with ease allowed for comfort and style. If your body measurements differ from those on the pattern envelope adjust the pieces before placing them on the fabric.

Check your back neck to waist and dress length, if necessary, alter the pattern. Lengthening and shortening lines are indicated.

- TO LENGTHEN** : Cut pattern between printed lines and place paper underneath. Spread pattern the required amount and pin to paper.
- TO SHORTEN** : Fold at the printed lines to form a pleat half the amount to be shortened, ie 1/2" (1.3cm) deep to shorten 1" (2.5cm).

#### Study Your Pattern Markings

- STRAIGHT GRAIN** : Place an even distance from selvage or a straight thread.
- FOLD** : Place on fold of fabric.
- LENGTHENING AND SHORTENING LINES**.
- SEAM ALLOWANCE** : 5/8" (1.5cm) unless otherwise stated.
- NOTCHES** : Match notches.
- CUTTING LINES** : Multi patterns have different cutting lines for different sizes.
- TAILOR-TACKS** : With double thread make two loose stitches forming loop through fabric layers and pattern leaving long ends. Cut loop to remove pattern. Snip thread between fabric layers. Leave tufts.

### Cutting Layouts

#### Cutting Directions

FOR FOLDED AND DOUBLE LAYER FABRIC - Place fabric with right side inside and pin pattern on wrong side of fabric.

FOR SINGLE LAYER - Pin pattern on right side of fabric. NOTE: Pattern pieces may interlock more closely for smaller sizes. Cut notches out from cutting line.

BEFORE removing pattern from fabric, transfer all pattern markings using tailor tacks or dressmaking tracing paper.

- KEY**: pattern printed side down
- KEY**: pattern printed side up
- KEY**: Cut out all pieces except pieces that extend beyond folded fabric, then open out fabric and on RIGHT side of fabric, cut in positions as shown.
- KEY**: For with and without nap layouts ensure fabric is placed with nap or design running in same direction.

Before pinning to fabric, press tissue pattern with a warm dry iron to remove creases.

#### Sewing Directions

Fabric Key	Right Side	Wrong Side	Interfacing	Lining

Sew garment following Sewing Directions.

**PIN** or machine-baste seams matching notches.

**STITCH** 5/8" (1.5cm) seams unless otherwise stated.

**PRESS** seams open unless otherwise indicated, clipping when necessary so seams will lie flat.

**14. EASE-STITCH** or **GATHER** - Loosen needle tension slightly. With RIGHT side up, stitch 5/8" (1.5cm) from cut edge using a long stitch. Stitch again 1/4" (6mm) away in the seam allowance.

**EDGE FINISH** - Neaten raw edges of seams, hems and facings using one of the following methods.

- Stitch 1/4" (6mm) from edge, turn under along stitching and stitch.
- Zig-zag or overlock raw edges.

**17. INTERFACING** — Pin interfacing to WRONG side of fabric. Cut across corners that will be enclosed with seams. Machine-baste 1/2" (1.3cm) from cut edge. (Shown only on first illustration). Trim interfacing close to machine-basting. For FUSIBLE interfacing, follow manufacturer's directions.

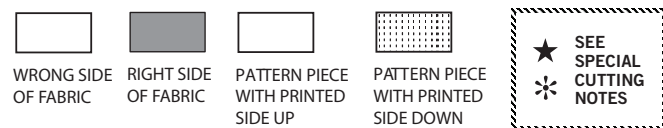
**18. STAY-STITCH** —Stitch 1/2" (1.3cm) from cut edge, in direction of arrows: (Shown only in the first illustration).

**LAYERING** — Trim seam allowance in layers.

- Layer enclosed seams
- Trim corners
- Clip inner curves
- Notch outer curves

**23. UNDERSTITCH** —Press facing away from garment; press seam toward facing. Facing side up, understitch close to seam through facing and seam allowances.

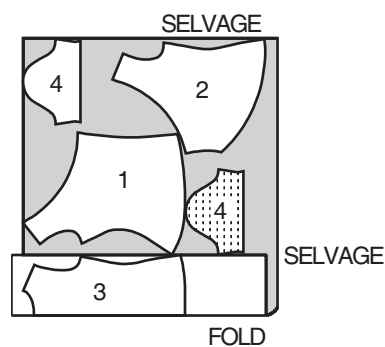
## Cutting Layouts



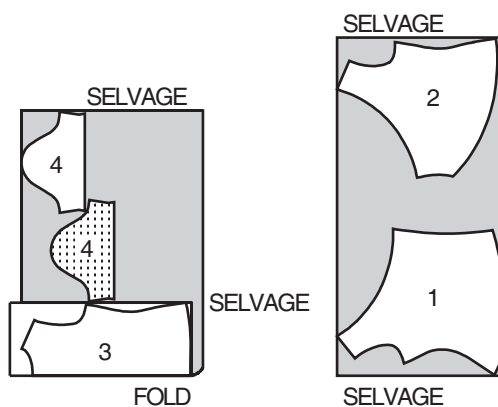
### TOP A

USE PIECES 1 2 3 4

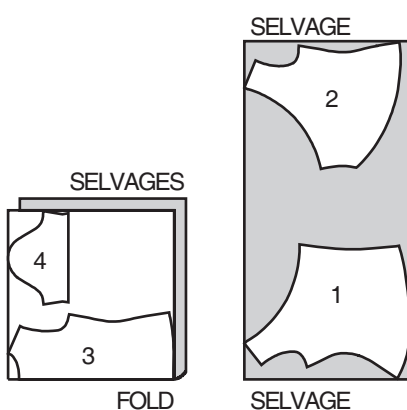
60" (150 CM) WITH NAP SIZES S M



60" (150 CM) WITH NAP SIZE XL



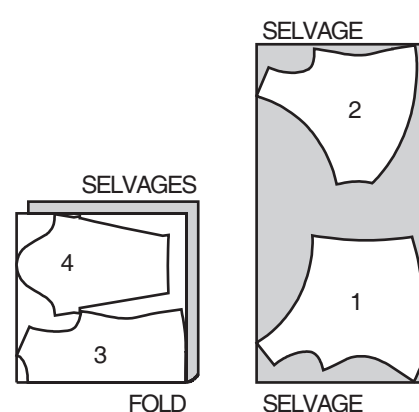
60" (150 CM) WITH NAP SIZE L



### TOP B

USE PIECES 1 2 3 4

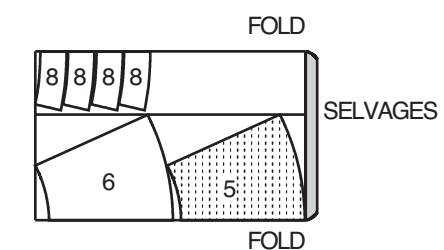
60" (150 CM) WITH NAP ALL SIZES



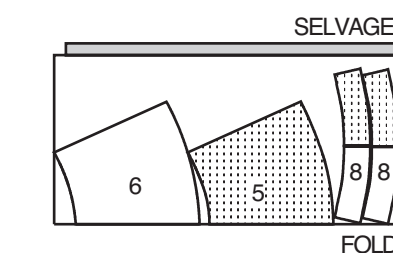
### SKIRT C

USE PIECES 5 6 8

60" (150 CM) WITH NAP SIZES XS S M



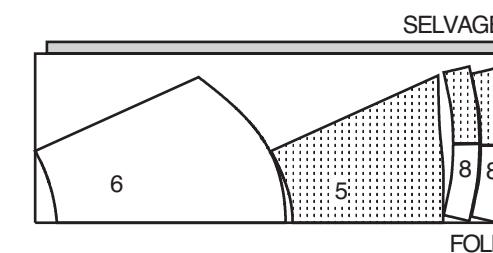
60" (150 CM) WITH NAP SIZES L XL



### SKIRT D

USE PIECES 5 6 8

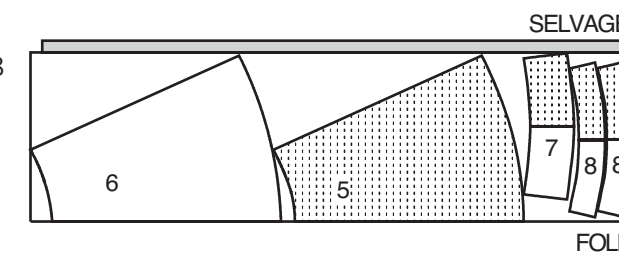
60" (150 CM) WITH NAP ALL SIZES



### SKIRT E

USE PIECES 5 6 7 8

60" (150 CM) WITH NAP ALL SIZES



## Español

### BLUSA A USE LAS PIEZAS 1 2 3 4

60" (150 CM) CON PELUSA TALLAS P M

60" (150 CM) CON PELUSA TALLA G

60" (150 CM) CON PELUSA TALLA XG

### BLUSA B USE LAS PIEZAS 1 2 3 4

60" (150 CM) CON PELUSA TODAS LAS TALLAS

### FALDA C USE LAS PIEZAS

60" (150 CM) CON PELUSA TALLAS XP P M

60" (150 CM) CON PELUSA TALLAS G XG

### FALDA D USE LAS PIEZAS 5 6 8

60" (150 CM) CON PELUSA TODAS LAS TALLAS

### FALDA E USE LAS PIEZAS 5 6 7 8

60" (150 CM) CON PELUSA TODAS LAS TALLAS

SELVAGES= ORILLAS FOLD= DOLBEZ

Sewing terms appearing in **BOLD TYPE** in Sewing Instructions are explained below.

**DOUBLE-STITCH** - Stitch seam along seamline; stitch again 1/4" (6mm) away in seam allowance using a straight stitch OR zigzag stitch; trim close to second stitching OR overlock seam.

**GATHER** - Stitch along seamline and again 1/4" (6mm) away in seam allowance, using long machine stitches. Pull thread ends when adjusting to fit.

**NARROW HEM** - Turn in hem; press, easing in fullness if necessary. Open out hem. Turn in again so raw edge is along crease; press. Turn in along crease; stitch.

**SLIPSTITCH** - Slide needle through a folded edge, then pick up a thread of underneath fabric.

**TOPSTITCH** - On outside, stitch 1/4" (6mm) from edge, seam or previous stitching, using presser foot as guide, or stitch where indicated in instructions.

## TOP A, B

**NOTE:** Illustrated for View A.

**NOTE:** For Knit Garments, use a zigzag or straight stitch, stretching fabric slightly while stitching.

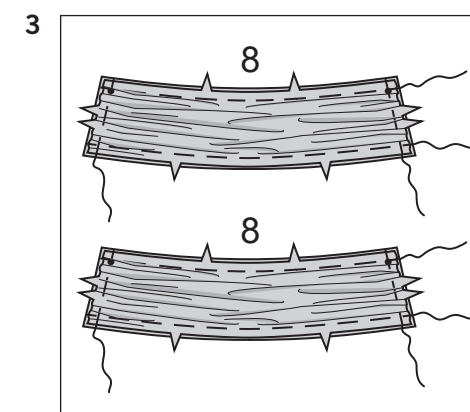
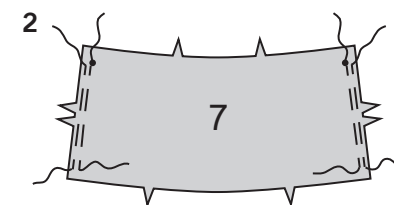
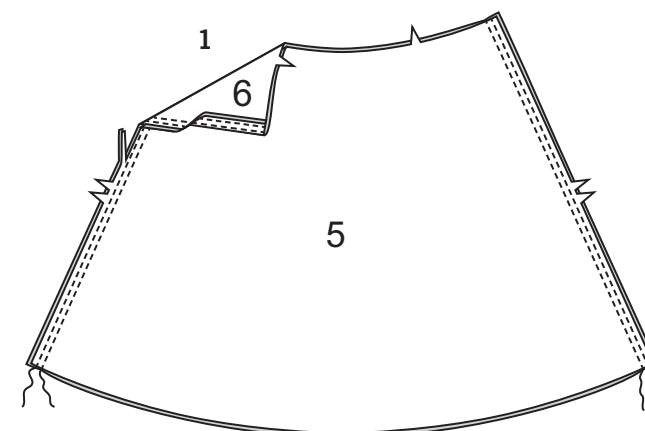
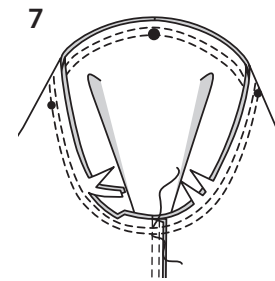
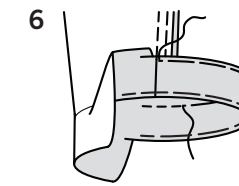
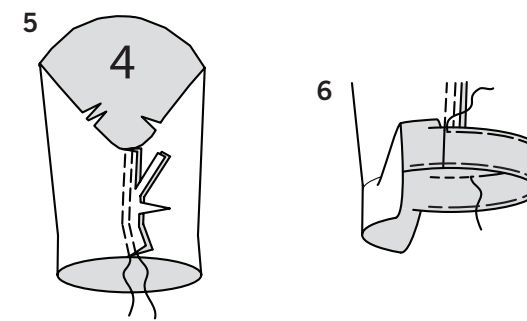
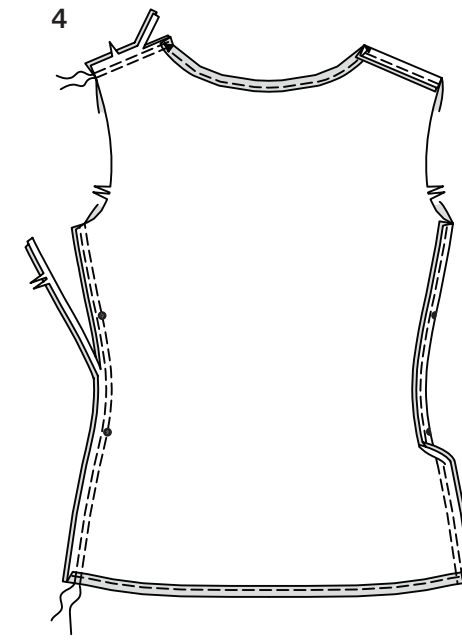
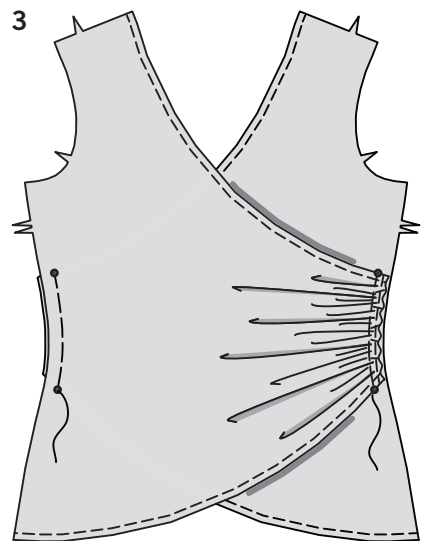
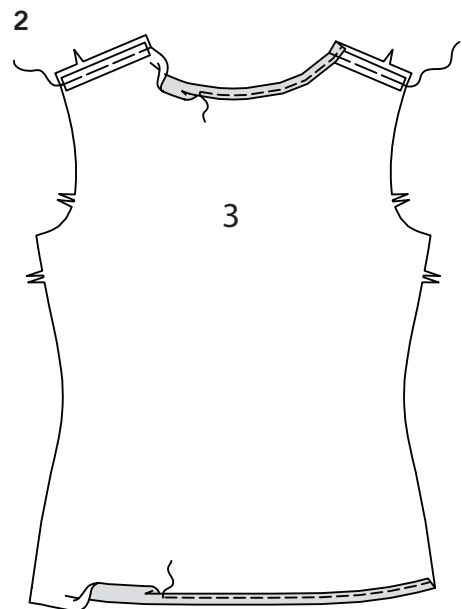
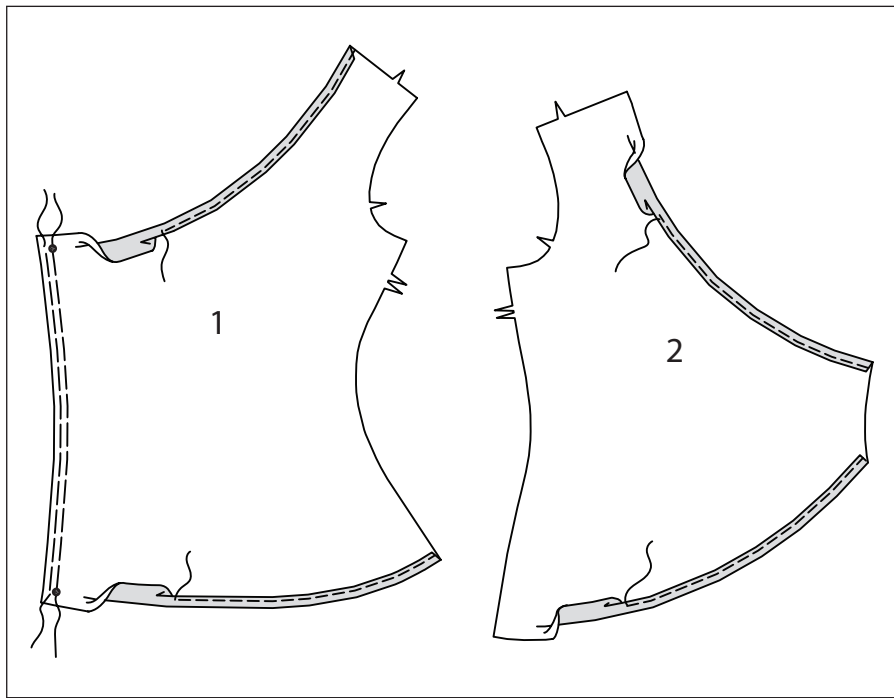
### FRONT AND BACK

- GATHER** left side seam of RIGHT FRONT (1) between small circles. Make 5/8" (1.5cm) **NARROW HEM** at neck and lower edges. Make 5/8" (1.5cm) **NARROW HEM** at neck and lower edges of LEFT FRONT (2).

- To stay shoulder edges of BACK (3), on WRONG side, center seam binding over seamlines, as shown. Baste. Make 5/8" (1.5cm) **NARROW HEM** at neck and lower edges.

- With RIGHT sides up, pin right front over left front, matching symbols and side seams. Adjust gathers; baste.

1



- Stitch front to back at shoulders and sides in **DOUBLE-STITCHED** seams. Press seams toward back.

### SLEEVE

- Stitch SLEEVE (4) seam in a **DOUBLE-STITCHED** seam. Press seams toward back.
- Turn up sleeve hem. Baste close to fold. Turn in 1/4" (6mm) on raw edge. Baste hem in place close to upper edge. Press. **TOPSTITCH** hem along upper basting.

- With RIGHT sides together, pin sleeve to armhole edge, matching symbols, placing large dot to shoulder seam. Baste. Stitch. Stitch again 1/4" (6mm) away in seam allowances. Trim close to second stitching. Press seam allowances flat. Turn seam allowances toward sleeve.

### SKIRT C, D, E

**NOTE:** The first view mentioned will be illustrated, unless otherwise indicated.

**NOTE:** For Knit Garments, use a zigzag or straight stitch, stretching fabric slightly while stitching.

### FRONT AND BACK

- Stitch FRONT (5) to BACK (6) at sides in **DOUBLE-STITCHED** seams. Press seams toward back.

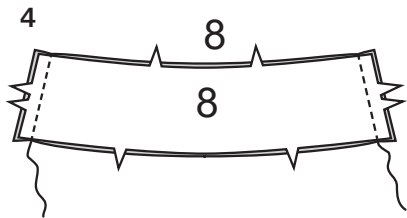
### YOKE AND FINISHING

#### VIEW E

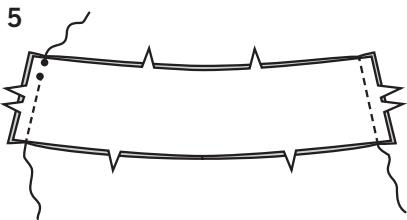
- For Overlay, **GATHER** side edges of each YOKE FRONT AND BACK (7) section between lower small dots and seamlines, as shown.

- Pin WRONG side of yoke overlay to RIGHT side of two YOKE FRONT AND BACK (8) sections, matching centers and symbols, having raw edges even. Adjust gathers at sides. Baste raw edges together, stretching upper and lower edges of overlay to fit. (Remaining yoke front and back sections will be used for facing.)

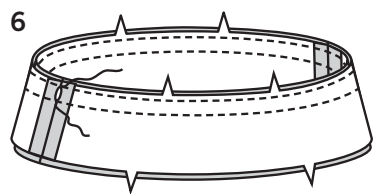
## ALL VIEWS



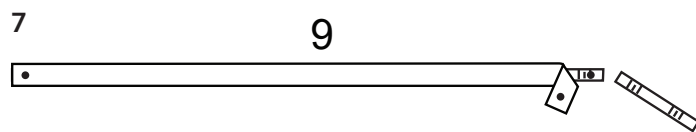
4. Stitch two YOKE FRONT AND BACK (8) sections together at sides.



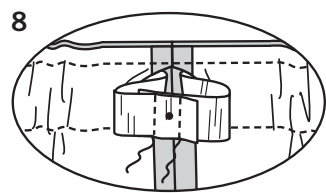
5. For facing, stitch remaining yoke front and back sections together at sides, leaving one side open between small dots.



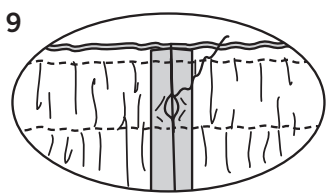
6. With RIGHT sides together, stitch facing to yoke at upper edge in a 7/8" (2.2cm) seam.  
To form casing for elastic, stitch seam again 1/4" (6mm) from raw edge.



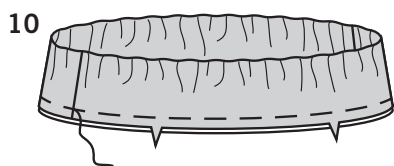
7. Cut elastic the length of GUIDE FOR ELASTIC (9). Transfer markings.



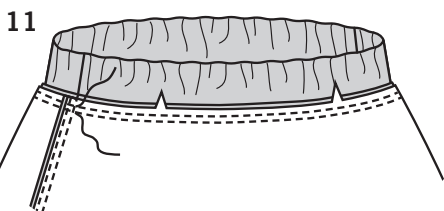
8. Insert elastic through opening in casing. Lap ends, matching small dots; hold with safety pin. Try on and adjust if necessary. Stitch ends of elastic securely.



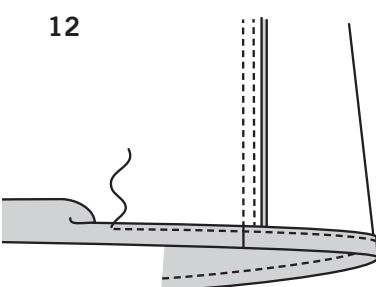
9. SLIPSTITCH opening in casing.



10. Turn yoke facing to inside; press. Baste lower edges together.



11. Pin yoke to upper edge of skirt, matching centers and seams. Stitch. Stitch again 1/4" (6mm) away in seam allowance. Trim close to stitching. Press seam toward skirt.



12. Make 5/8" (1.5cm) NARROW HEM at lower edge.

## BLUSA A, B

NOTA: Se muestra el modelo A.

NOTA: Estirar uniformemente la tela delante y detrás de la aguja al coser.

## FRENTE Y ESPALDA

- FRUNCIR la costura del costado izquierdo del FRENTE DERECHO (1) entre los círculos pequeños.  
Hacer un **DOBLADILLO ANGOSTO** de 1.5 cm en los bordes del escote e inferior.  
Hacer un **DOBLADILLO ANGOSTO** de 1.5 cm en los bordes del escote e inferior del FRENTE IZQUIERDO (2).
- Para **REFORZAR** los bordes del hombro de la ESPALDA (3), por el revés, centrar la cinta de extrafort sobre las líneas de costura, como se indica. Hilvanar.  
Hacer un **DOBLADILLO ANGOSTO** de 1.5 cm en los bordes del escote e inferior.
- Con los derechos hacia arriba, prender con alfileres el frente derecho al frente izquierdo, coincidiendo los símbolos y las costuras del costado. Ajustar los frunces; hilvanar.
- Coser el frente a la espalda por los hombros y los costados con costuras de **PESPUNTE DOBLE**. Asentar las costuras hacia la espalda.

## MANGA

- Coser la costura de la MANGA (4) con un **PESPUNTE DOBLE**. Asentar las costuras hacia la espalda.
- Formar hacia arriba el dobladillo de la manga. Hilvanar cerca al doblez. Doblar hacia dentro 6 mm en el borde no terminado. Hilvanar el dobladillo en su lugar cerca al borde superior. Asentar. Hacer un **PESPUNTE DE ADORNO** en el dobladillo a lo largo del hilván superior.
- Derecho con derecho, prender con alfileres la manga al borde de la sisa, coincidiendo los símbolos, poniendo los círculos grandes en la costura de el hombro. Hilvanar. Coser, coser nuevamente a 6 mm en los márgenes de costura. Recortar cerca al segundo pespunte. Asentar los márgenes de costura juntos, luego voltearlos hacia la manga.

## FALDA C, D, E

NOTA: Se muestra el primer modelo a menos que se indique lo contrario.

NOTA: Para las prendas de tejido de punto, utilizar puntada zigzag o recta, estirando ligeramente la tela al coser.

## FRENTE Y ESPALDA

- Coser el FRENTE (5) a la ESPALDA (6) por los costados con costuras de **PESPUNTE DOBLE**. Planchar las costuras hacia la espalda.

## CANESÚ Y ACABADO

Modelo E:

- Para la Pieza Sobrepuesta, **FRUNCIR** los bordes del costado de cada sección del FRENTE Y ESPALDA DEL CANESU (7) entre los círculos pequeños inferiores y las líneas de costura, como se indica.

- Prender con alfileres el revés de la pieza sobrepuesta del canesú al derecho de dos secciones del FRENTE Y ESPALDA DEL CANESU (8), coincidiendo los centros y los símbolos, manteniendo los bordes no terminados parejos. Ajustar los frunces por los costados. Hilvanar los bordes no terminados juntos, estirando los bordes superiores e inferiores de la pieza sobrepuesta para encajar. (Las secciones restantes del frente y espalda del canesú se utilizarán para la vista).

Todos los Modelos:

- Coser dos secciones del FRENTE Y ESPALDA DEL CANESU (8) juntas por los costados.
- Para la vista, coser las secciones restantes del frente y espalda del canesú juntas por los costados, dejando un costado abierto entre los círculos pequeños.
- Derecho con derecho, coser la vista al canesú por el borde superior con una costura de 2.2cm. Para formar la jareta para el elástico, coser la costura nuevamente a 6mm del borde no terminado.
- Cortar el elástico del largo de la GUIA PARA ELASTICO (9). Transferir las marcas.
- Introducir el elástico a través de la abertura en la jareta. Sobreponer los extremos, coincidiendo los círculos pequeños; sujetar con un imperdible. Probarse y ajustar si es necesario. Coser firmemente los extremos del elástico.
- Coser la abertura en la jareta con **PUNTO DE DOBLADILLO**.
- Voltear la vista del canesú hacia adentro; planchar. Hilvanar los bordes inferiores juntos.
- Prender con alfileres el canesú al borde superior de la falda, coincidiendo los centros y las costuras. Coser. Coser nuevamente a 6mm en el margen de costura. Recortar cerca al pespunte. Planchar la costura hacia la falda.
- Hacer un **DOBLADILLO ANGOSTO** de 1.5cm en el borde inferior.